



SHIP SPECIFICATIONS &
INFORMATION CARD
EXPEDITIONS VESSELS

ELEGANT SHIPS DESIGNED FOR COMFORT

Optimally designed for expeditions — our identical sister ships are small enough to navigate remote polar regions and inland canals, while large enough to provide superior handling and stability in rough seas.

Our state-of-the-art, industry-first in-ship marina provides ease of embarkation and disembarkation.

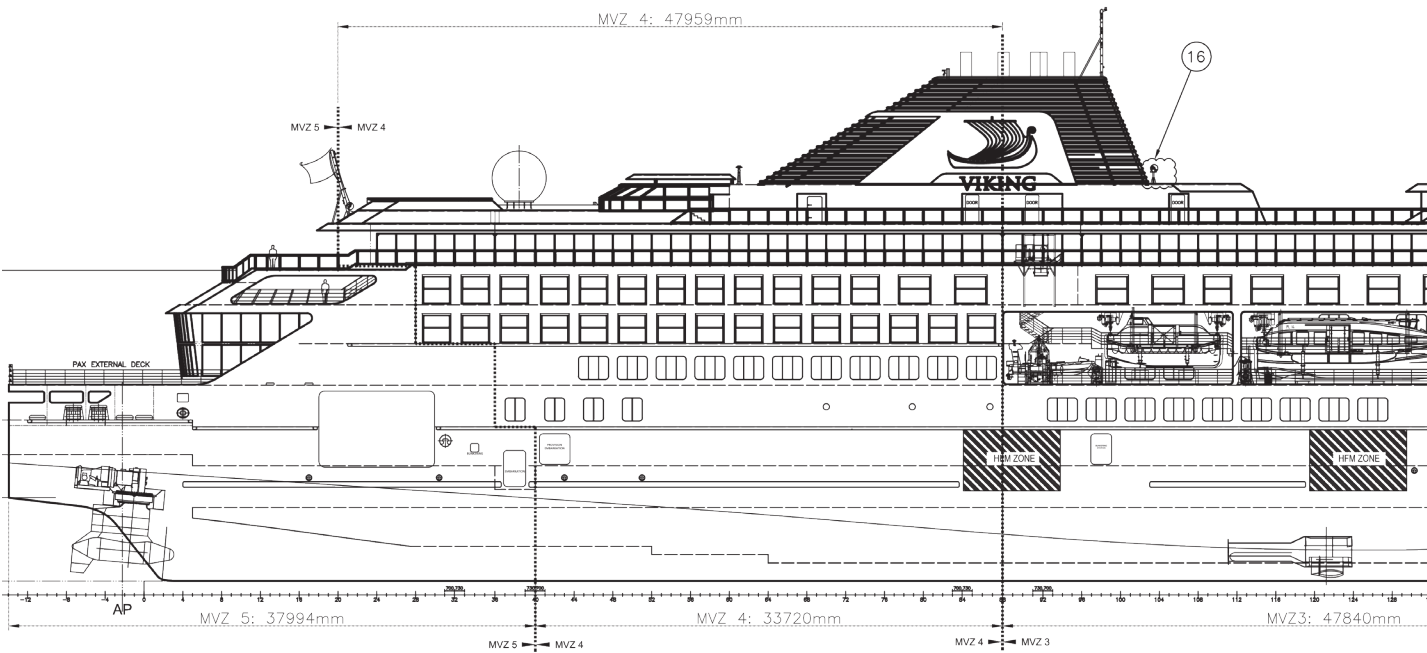


TABLE OF CONTENTS

SIDE PLAN AND SPECIFICATIONS: 'POLARIS' CLASS	4
SHELL DOOR PLAN: 'POLARIS' CLASS	6
SHORE POWER CONNECTION	9
TENDER BOATS	10
SPECIAL OPERATIONS BOATS	12
ZODIAKS	14
SUBMARINES	16
DIVE SUPPORT BOAT	18
CONTACT DETAILS	20
<i>VIKING OCTANTIS</i>	22
<i>VIKING POLARIS</i>	23

SIDE PLAN AND SPECIFICATIONS: 'POLARIS' CLASS

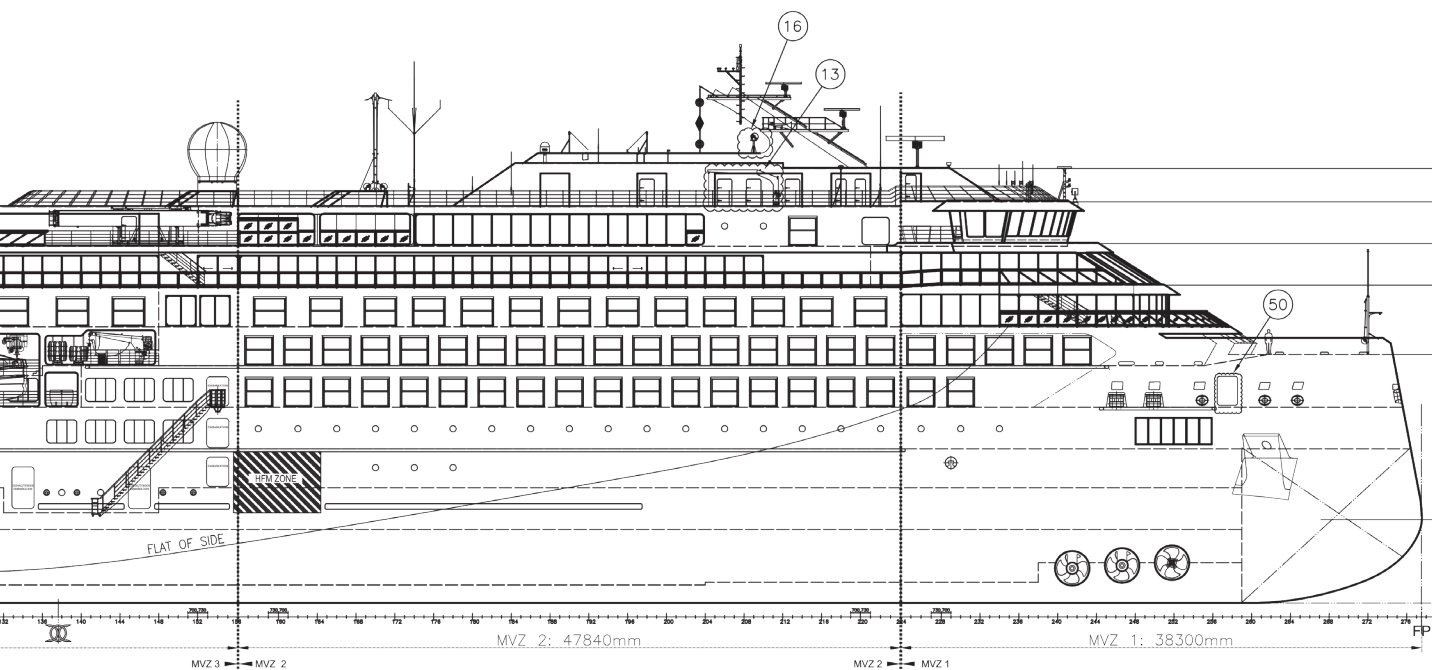
SIDE PLAN



SPECIFICATIONS

GT	30,114
NRT	9,423
LOA / LBP	205M / 205M
Max Draft	6.2M
Beam	23.5M
Max Airdraft	36M
Bow Thrusters	3 x 1,500 kW

Stern Azipods	2 x 5,500 kW
Pax Cap (normal operation)	378
Crew Cap (normal operation)	268
Flag	Norway (NIS)
Port of Registry	Bergen



VIKING OCTANTIS

Build Year	2021
IMO #	9863194
Call Sign	LAGY8

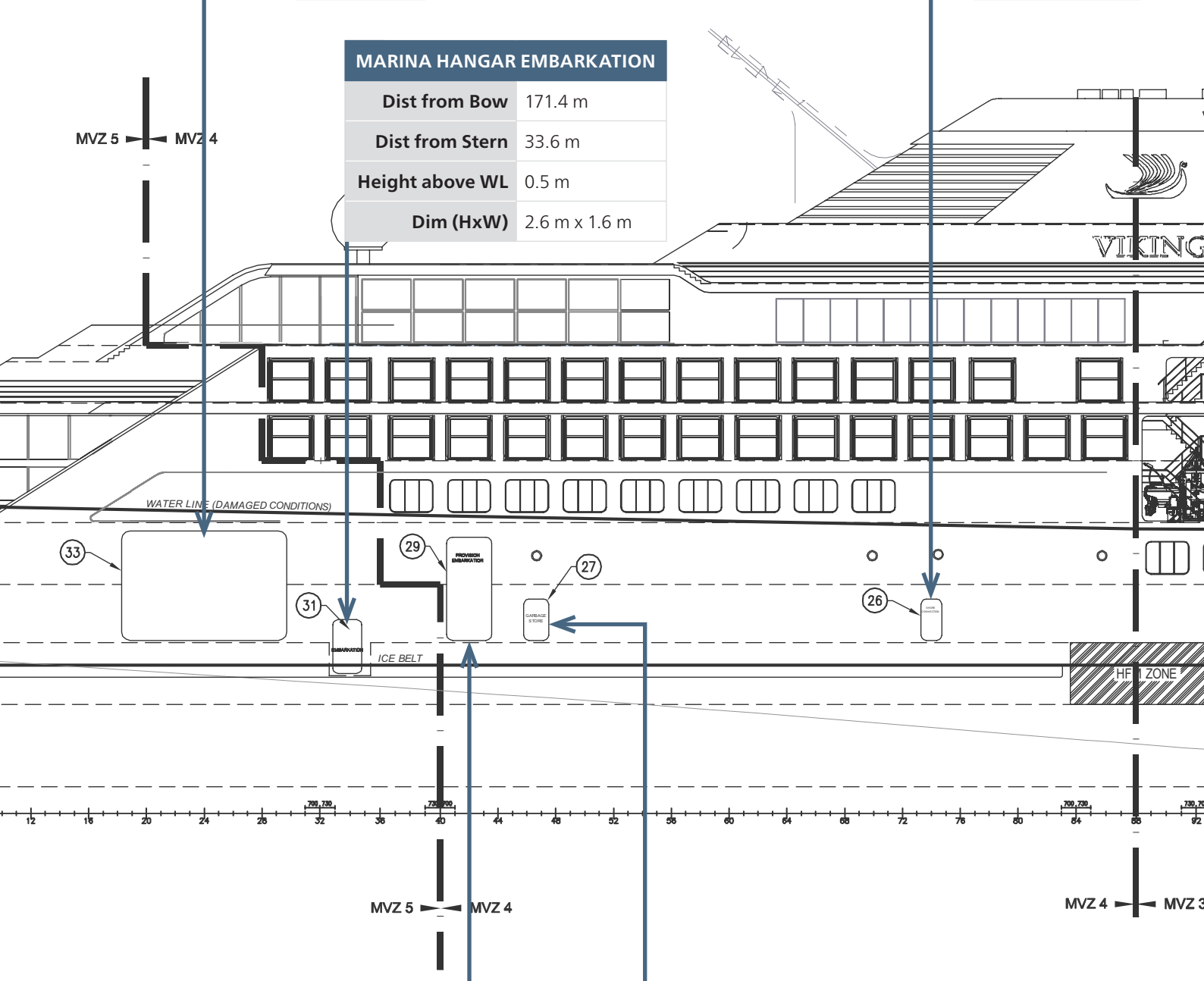
VIKING POLARIS

Build Year	2022
IMO #	9863209
Call Sign	LAGZ8

Abstract

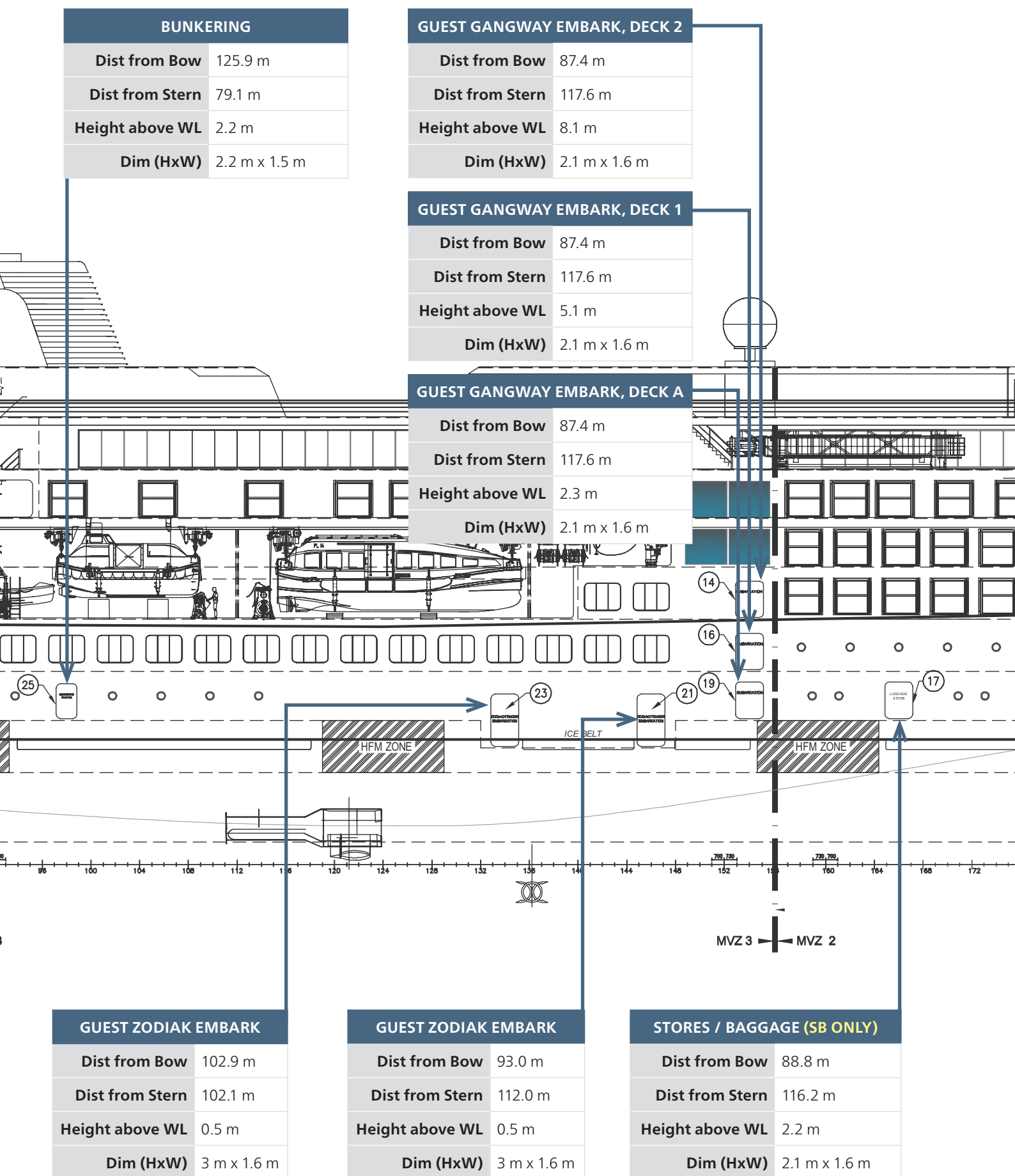
[illegible]

MARINA HANGAR EMBARKATION



PROVISIONS, BAGGAGE, SIDELOADER (SB ONLY)

GARBAGE OFFLOAD (SB ONLY)





SHORE POWER CONNECTION

PRODUCT PARAMETERS		
Parameter name	Value	Unit
Voltage	6600	V
Current	400	A
Frequency	60	Hz
Short circuit current, rms	31.5	kA
Short circuit current, peak	82	kA
Ingress protection (IP) rating	32	
Distribution system type	Three-phase three-wire with high-resistance earthed neutral	
Number of phases	3	
Number of wires	3	
System earthing type	Earthed	
Ambient temperature maximum	45	°C
Ambient temperature minimum	0	°C
Power (P)	3500	kVA

All the offered equipment complies, as far as applicable, with the following rules and regulations:

- IEC 80005-1 Edition 1.0, 2012-07 ANNEX C Additional Requirements for cruise ships
- IEC publication 92, electrical installation on ship
- Manufacturer standard for A.C. Switchboards



TENDER BOATS

TENDERS (2 CARRIED)		
	meters	feet
LOA	14.25	46.8
Beam	5.96	19.6
Draft	1.085	3.6
Boarding Height above water line	0.5	1.8

PASSENGERS		
	normal	maximum
Passengers (tender operation)	150	220
Passengers (lifeboat operation)	200	N/A

SPECIAL OPERATIONS BOATS

BOOMERANGER M1300 (2 CARRIED)

	meters	feet
LOA	13	42.65
Beam	3.2	10.5
Draft	0.72	2.36

Passengers	12
-------------------	----





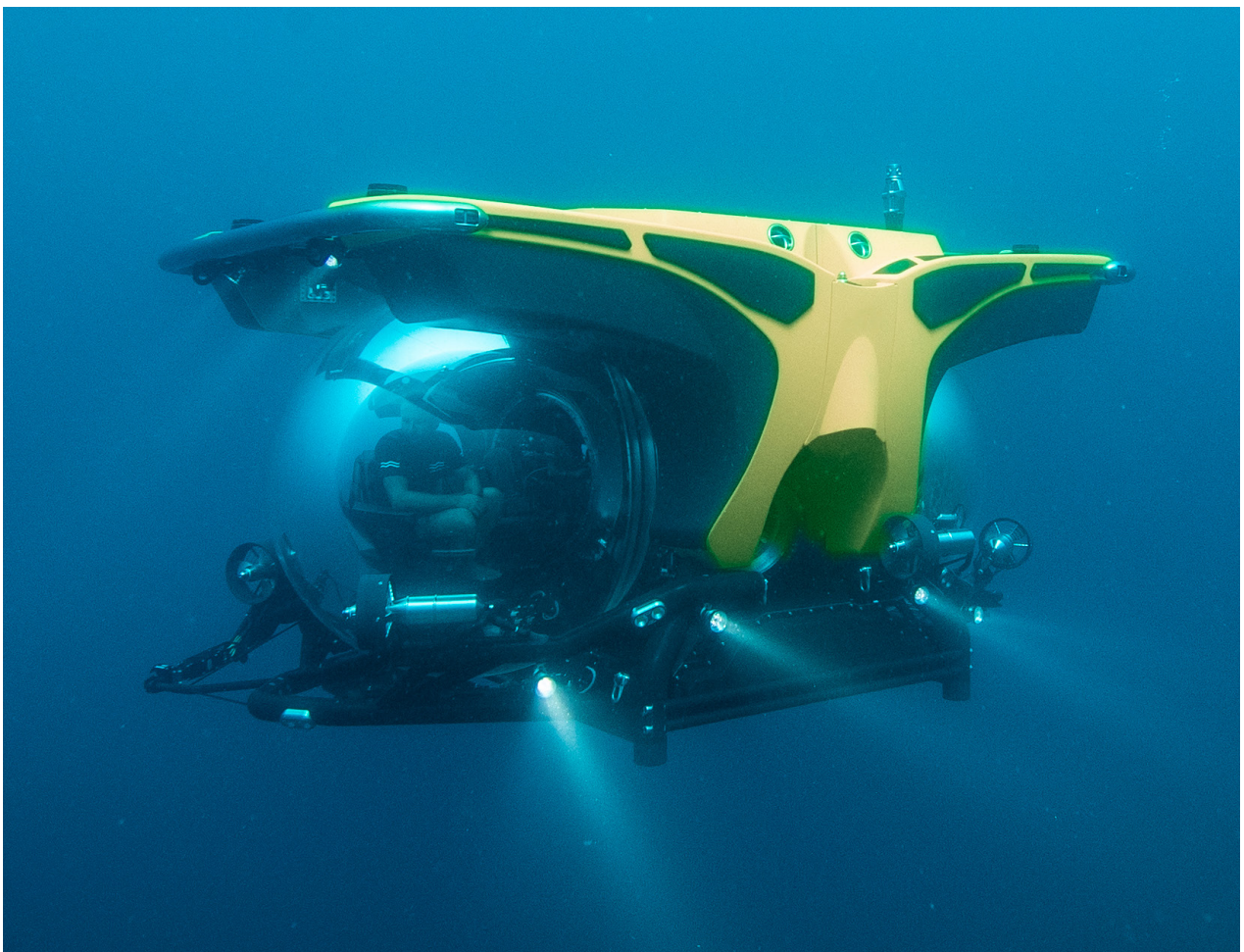
ZODIAKS

MilPRO MK5 EXPEDITION (17 CARRIED)		
	meters	feet
LOA	5.85	19.2
Beam	2.48	8.2
Weight	250 kg	551 lbs

Maximum Passengers	15
--------------------	----

SUBMARINES

UBOATWORX CRUISE 7 SUBMARINE (2 CARRIED)		
	meters	feet
LOA	4.5	14.8
Beam	3.2	10.5
Height	2.32	7.6
Maximum Passengers	6	



DIVE SUPPORT BOAT

STORMER PORTER 68		
	meters	feet
Length Max	6.8	22.3
Beam Max	2.6	8.53
Beam Overall	2.5	8.2
Air Draft	2.2	6.56
Draft	0.35	1.15
Total Height	2.48	8.14
Min Freeboard	0.8	2.62



CONTACT DETAILS





SHIP MAIN TEL # (GUEST SERVICES)	+1 213 737 4630
---	------------------------

DECK	
Bridge	xoc_bridge@vikingcruises.com
Master	xoc_master@vikingcruises.com
Staff Captain	xoc_staffcaptain@vikingcruises.com
Chief Officer	xoc_chiefofficer@vikingcruises.com
2nd Officer, Navigation	xoc_2ndnavigation@vikingcruises.com
Chief Officer, Sub Ops	xoc_chieffsubops@vikingcruises.com

HOTEL	
Hotel General Manager	xoc_hotelgm@vikingcruises.com
Associate General Manager	xoc_associategm@vikingcruises.com
Hotel Purser	xoc_hotelpurser@vikingcruises.com
Guest Service Manager	xoc_guestservicesmgr@vikingcruises.com

EXPEDITION	
Expedition Leader	xoc_expedleader@vikingcruises.com

ENGINE	
Chief Engineer	xoc_chiefengineer@vikingcruises.com
Staff Chief Engineer	xoc_staffchiefeng@vikingcruises.com

MEDICAL	
Doctor	xoc_doctor@vikingcruises.com

STORES	
Provision Master	xoc_provisionmaster@vikingcruises.com

SHIP MAIN TEL # (GUEST SERVICES)	+1 213 557 6460
---	------------------------

DECK	
Bridge	xpo_bridge@vikingcruises.com
Master	xpo_master@vikingcruises.com
Staff Captain	xpo_staffcaptain@vikingcruises.com
Chief Officer	xpo_chiefofficer@vikingcruises.com
2nd Officer, Navigation	xpo_2ndnavigation@vikingcruises.com
Chief Officer, Sub Ops	xpo_chieffsubops@vikingcruises.com

HOTEL	
Hotel General Manager	xpo_hotelgm@vikingcruises.com
Associate General Manager	xpo_associategm@vikingcruises.com
Hotel Purser	xpo_hotelpurser@vikingcruises.com
Guest Service Manager	xpo_guestservicesmgr@vikingcruises.com

EXPEDITION	
Expedition Leader	xpo_expedleader@vikingcruises.com

ENGINE	
Chief Engineer	xpo_chiefengineer@vikingcruises.com
Staff Chief Engineer	xpo_staffchiefeng@vikingcruises.com

MEDICAL	
Doctor	xpo_doctor@vikingcruises.com

STORES	
Provision Master	xpo_provisionmaster@vikingcruises.com







For further information or requests please contact PortOps@viking.com