



NIRB Uuktuutinga Ihivriuqhikhamut #126166

Vermont State University

Uuktuutinga Qanurittuq:	New
Havaap Qanurittunia:	Scientific Research
Uuktuutinga Ublua:	Friday, April 11, 2025
Period of operation:	from 2025-05-11 to 2025-05-25
Havauhikhaq Ikayuqtinga:	Ross Lieblappen Vermont State University 124 Admin Drive Randolph Center VT 05061 USA Hivayautit Nampanga:: 781-424-7268, Kayumiktukkut Nampanga::

QANURITTUT

Tukihiannaqtunik havaariyaumayumik uqauhiyun

Qablunaatitut: X-ray computed tomography (CT) provides non-destructive 3D imaging and analysis of internal structure for any porous media. Our team utilizes CT imaging to probe permafrost and sea ice for microbes in samples collected from Alaska, Canada, and Greenland. Recent advances in this technology now allow for imaging at the nanoscale, where we ultimately seek to visualize microorganisms inhabiting the pore spaces. By characterizing this structure, we will further our understanding of how microbial communities relate to their environment, and how changes such as increased freeze/thaw cycles in a changing climate may impact their health and microbial function. In addition to imaging the permafrost and sea ice, we extract DNA from samples to examine microbe diversity to connect the physical and biological characteristics of cores from different sites and by depth. This work will provide the first images of permafrost and sea ice at the nanoscale. The entire scope of this project involves fieldwork across the Arctic, covering Alaska, Canada, and Greenland. For the fieldwork in Cambridge Bay May 11-25 2025, we will select 5-6 permafrost locations outside of town and accessible by truck. As much as possible, we will seek to co-locate field sites with previous permafrost studies for comparison with the literature and traditional ecological existing knowledge. Similarly, we will select 5-6 sea ice coring locations in the Cambridge Bayharbour to be accessed via snow machines. Both sea ice and permafrost cores will be approximately 1 m in length and 7.5 cm in diameter. All cores will be shipped back to Vermont at sub-eutectic temperatures until imaging as described above. Sharing Results: While in Nunavut, we plan to share our work with the local community via public presentations and outreach events in the local school if welcomed. For any community where we complete fieldwork, we prioritize sharing our research with the local community and thoroughly enjoy the exchange of ideas at such gatherings. For example, while in Uqiagvik, Alaska in February 2025, we presented at a community dinner gathering as well as with the local high school. We try to get students using our drills to core their own samples of either permafrost and sea ice, and let the students get hands on experience looking at the ground beneath them. Additionally, we plan to publish the scientific findings of this work in peer-reviewed academic journals and present at both scientific conferences and with the general public. Already we have presented at the American Geophysics Union annual meeting (December 2024), as well as local presentations at Vermont State University. We plan to continue reaching out to schools in our area upon returning to Vermont.

Uviititut: N/A

Inuktitut: N/A

Inuinnaqtun: X-raymut kititauni iksulirutinut (CT) piqaqtitni huruilaittut 3D piksait qauiyhaqnilu iluanut hunat kitutliqak anigulagit piyauni. Havaqatigivut atuqtai CT piksait naunaiqtuqni qiqumainnaqni tariuplu hikua mikkataqnut naunaiyagat katitauni talvanga Alaska, Kanata, tamnaluk Akukittuq. Qangahag hivunmuktitni uuma pitquhiliqutit pipkalaliqtai kangiqhimanivut qanuq mikatannuit, tapkunani qiniqvigivaktaptingni takuyangi mikatannuit uumayut nayuqtai angmavinnuit. Ihuaqhautiplugu una hanahimania, kangiqhivalliqniaqtavut qanuq mikkataat uumayuvaluit turangani avataini, qanuqlu ahianguqni tapkuatut ilagiqni qiqumani/auktuqni pitquhi allanguqninut ahilap aktualaqni aaniaqtailini, mikkataatlu uumayuvaluit pitquhi. Ilagiplugit piksaluqni qiqumainnaqnit tariuplu hikua, amuyavut DNA naunaiqkutarnit anunaiyagat mikkatat allatqikni attatariangi timait uumayuvaluitlu pityquhit angmanivaluinit allatqini inait itini. Una havaq piqaqtitniagai hivullit piksat qiqumainarniqnut tariuplu hikua talvani mikkataat uukturautit. Tamna tamaat havakhait uuma havanguyug ilagit maniqami havat humiliqak Ukiurtaqtumi, tamnaluttauq Alaska, Kanata, tamnaluk Akukittuq. Tapkununga maniqami havat Ikaluktutiakmi Mai 11-25, 2025, tikkuaganiaqtavut 5-6 qiqumainnaqtuq inait hilataani nunaliyug tikitaulu akhaluutikkut. Ayuqnaittarangit, qiniqniaqtugut iniqanikhanik maniqami inait hivuani qiqumainnaqnit naunaiyagat hutqigikahait tapkununga pitquhit uumayuliquitit atuqtut ilihimanit. Taimattauq, tikkuaganiaqtavut 5-6 tariuqni hikut amuhiviuni inait tahamani Ikaluktutiak tulaktaqviani naunaiyariangi atuqhugit sikiitut. Tamaniq tariuq hikua qiqumainnarniqlu amuhiviuni mikhaanitniat 1 miitat takini tamnaluk 7.5 cm akimut. Tamait amuhiviuni auaqtitauniat utimut talvanga Vermont qiqittaqniani auktuqtaqniani uunaqnit utaqilugu piksaluqnit unniqtuqniqut qulaani. Atuqatigikni Qanuritnit: Tahamanitluta Nunavutmi, parnakhimayugut atuqatigikni havavut nunalikni nunaliyugut atuqlugit inungnik hatqiqitaitit pipkarahuaqnilu huliniit nunalikni iliaqviki qaitquyagupta.

Kitunutliqak nunalikni iniqhigupta maniqami havat, hivulliutyaqtavut atuqatigikni naunaiyagavut nunaliknut nunaluuyut aliagiqpiaqhugitlu uqaqatigiknit ihumaliurutit taimaittuni katitviuni. Naunaipkutariplugu, talvanillakhuta Utqiagvik, Alaska talvani Fibruari 2025, hatqigtavut nunalikni unnugumitarniq katitviuni nunaliknilu puqtuniquhani ilihavik. Pipkarahuaqtavut ilihagtut atuqni ikuutavut amuhiyangi inmingnik naunaiyagat naliaknik qiqumainnaqni tariuplu hikua, pipkaqnitu ilihagtut tiguttaqni atuqhimaninut qiniqni maniqami ataani tapkuat. Ilagiahugit, paraktugut makpiraliuqni naunaiyainiq nalvagai uumatut havaq havaqatimingni naunaiyaqni ilihagpiaqhimayunit tuhagakhaliuqvut hatqigtitnilu tamatkikni naunaiyaqni katimaqyuarnit tamaitnutlu inungnut. Hatqigtittariqtavut talvani American Geophysics Unionnga ukiumut katimaniq (Tisaipa 2024), talvaniluttauq nunalikni hatqigtitaunit talvani Vermont State Universitynga. Parnaktavut atuinaqni pipkarahuaqni ilihagvit nunagiyaptingni utirangat talvunga Vermont.

Personnel

Personnel on site: 6

Days on site: 8

Total Person days: 48

Operations Phase: from 2025-05-11 to 2025-05-25

Hulilukaarutit

Inigiya	Hulilukaarut Qanurittuq	Nunannga Qanurittaakhaanik	Initurlinga qanuritpa	Initurlinga utuqqarnitat unaluuniit Ingilraaqnitat Uyarannguqtut akhuurninnga	Qanitqiyauyuq qanitqiamut nunallaat kitulluuniit ahiruqtailiyainnit nuna
Sea ice in Cambridge Bay	Sampling sites	Marine	This is our first year sampling in Nunavut. We have no history at this site.	N/A	Cambridge Bay, 15- 20k.
Permafrost accessible by road outside of town	Sampling sites	Municipal	This is our first year sampling in Nunavut. We have no history at this site.	N/A	Cambridge Bay, 10k.

Nunaliin Ilauyun, Aviktuqhimayuniitunullu Ikayuuhiarunguyun

Nunauyuq	Atia	Timiuyuq	Upluani Uqaqatigiyaungmata
Ikaluktuttiak	Gabriel Ferland	Vivtem	2024-12-15
Ikaluktuttiak	David Hik	POLAR - Canadian High Arctic Research Station	2024-11-12

Angiuttauvaktunik

Naunaiqlugu nunanga talvani havauhikhaq ittuq:

Angiuttauvaktunik

Munariniqmut Ayuittiaqtuq	Angirutinga Qanurittuq	Tadja Qanurittaakhaanik	Ublua Tuniyauyuq/Uuktuqtuq	Umikvikhaa Ublua
Nunavunmi Ihivriuqniqmut Timiqutigiyanga	Scientific Research Licence	Applied, Decision Pending		

Project transportation types

Transportation Type	Qanuq Atuqtauniarmangaa	Length of Use
Water	snowmobile	
Land	truck, snowmobile	

Project accomodation types

Nunauyuq

Ihuaqutivaluin Atuqtauyukhan

Hanalrutit atuqtaunahuat (ukuallu ikuutat, pampiutainnik, tingmitinik, akhaluutinik, hunaluuniit)

Hanalrutit Qanurittuq	Qaffiuyut	Aktikkulaanga – Qanurittullu	Qanuq Atuqtauniarmangaa
Drill	2	7 cm	permafrost and sea ice coring drills
Snowmobile	5	2 m x 1 m	Access to coring site
Truck	1	2 m x 1 m	Access to permafrost sites along road

Qanurittuq Urhuqyuaq unalu Qayangnaqtut Hunavaluit Aturninnga

Qanurittuq urhuqyuaq hunavaluit aturninnga:	Urhuqyuaq Qanurittuq	Qaffiuyut qattaryut	Qattaryuk Aktikkulaanga	Atauttimut Qaffiuyut	Ilanga	Qanuq Atuqtauniarmangaa
Gasoline	fuel	1	50	50	Liters	For snowmobiles and drills
Ethanol	hazardous	1	1	1	Liters	Sterilization

Imaqmik Aturninnga

Ubluq qanuraaluk (m3)	Aturumayain imavaluin utiqittagaani qanuq	Atulirumayain imavaluin utiqittagani humi
0		

Iqqakuq

Ikkakunik Munakgiyauyunik

Havauhikhaq Hulilukaarut	Qanurittuq Iqqakut	Ihumagiyauyuq Qanuraaluktut Atuqtait	Qanuq Iqqakuurniarmangaa	Halummaqtirarnirutikhan piyutin
Information is not available				

Avatiliriniqmut Ayurhautingit:

We will be using snowmobiles and pickup trucks but will have no waste. Anything taken into the field will leave with us. We will fill any coring holes in the ice and ground.

Additional Information

SECTION A1: Project Info

SECTION A2: Allweather Road

SECTION A3: Winter Road

SECTION B1: Project Info

SECTION B2: Exploration Activity

SECTION B3: Geosciences

SECTION B4: Drilling

SECTION B5: Stripping

SECTION B6: Underground Activity

SECTION B7: Waste Rock

SECTION B8: Stockpiles

SECTION B9: Mine Development

SECTION B10: Geology

SECTION B11: Mine

SECTION B12: Mill

SECTION C1: Pits

SECTION D1: Facility

SECTION D2: Facility Construction

SECTION D3: Facility Operation

SECTION D4: Vessel Use

SECTION E1: Offshore Survey

SECTION E2: Nearshore Survey

SECTION E3: Vessel Use

SECTION F1: Site Cleanup

SECTION G1: Well Authorization

SECTION G2: Onland Exploration

SECTION G3: Offshore Exploration

SECTION G4: Rig

SECTION H1: Vessel Use

SECTION H2: Disposal At Sea

SECTION I1: Municipal Development

Qanurittuq Ittunik Avatinga: Avatingalluanga

Permafrost will be sampled on the tundra away from Cambridge Bay. Sea ice will be sampled off the coast of Cambridge Bay.

Qanurittuq Ittunik Avatinga: Inuuhimayunut Avatinga

Existing permafrost environment will be open tundra. There will be minimal disruption of grass, lichen, and soil to sample permafrost. Wildlife (caribou, birds, foxes, bears) will be avoided.

Qanurittuq Ittunik Avatinga: Inungit-maniliurutingit Avatinga

Both permafrost and sea ice will be sampled away from the town of Cambridge Bay.

Miscellaneous Project Information

Naunaiyainiq ukuninnga Ayurhautingit unalu Piumayaat Ikikliyuumiutinahuarutit

There are no significant impacts identified for either permafrost or sea ice sampling.

Tamatkiumayunik Ihuikgutivaktunik

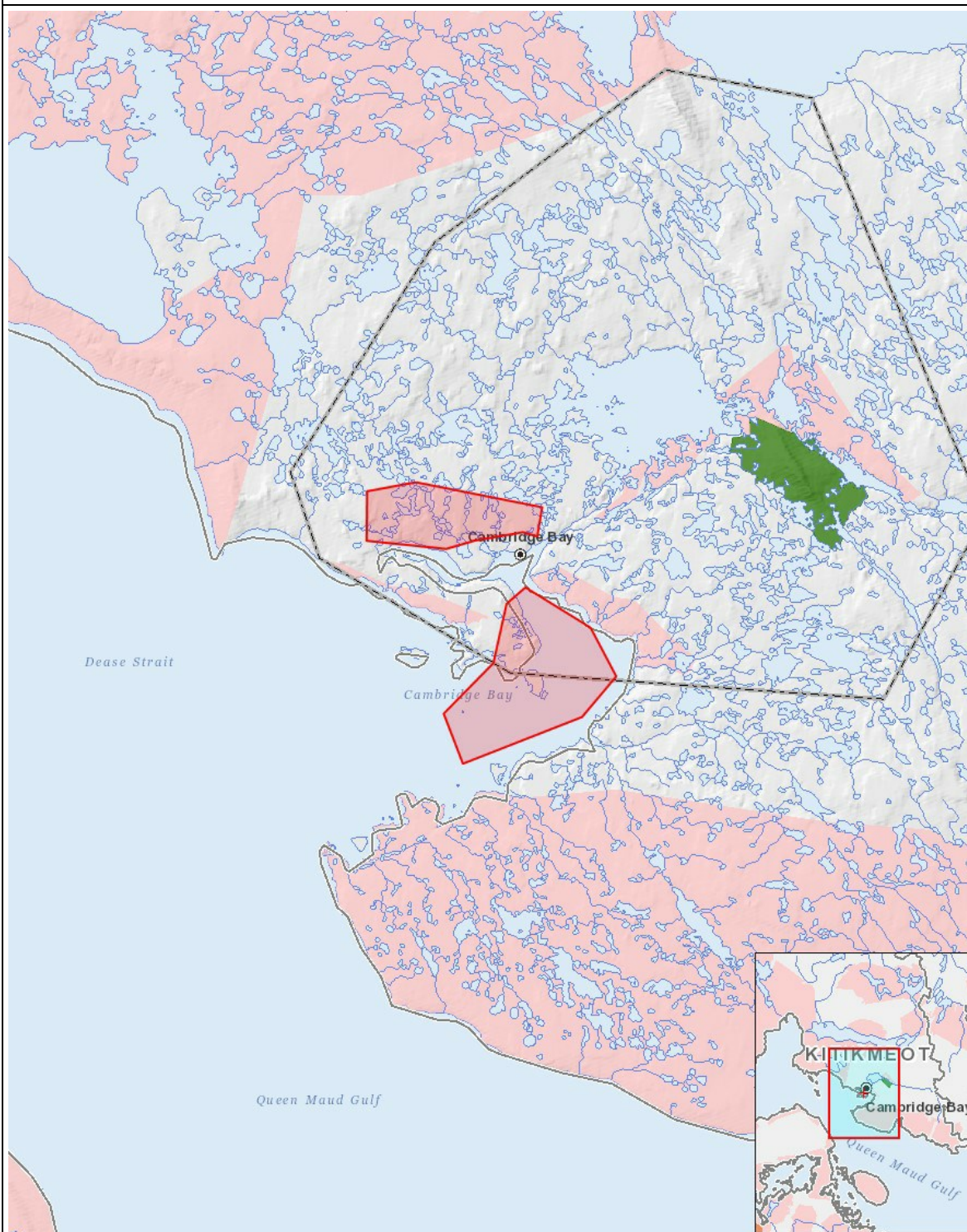
Impacts

Ilitariyauniq Avatiliriniqmut Ayurhautingit

	PHYSICAL	Designated environmental areas	Ground stability	Permafrost	Hydrology / Limnology	Water quality	Climate conditions	Eskers and other unique or fragile landscapes	Surface and bedrock geology	Sediment and soil quality	Tidal processes and bathymetry	Air quality	Noise levels	BIOLOGICAL	Vegetation	Wildlife, including habitat and migration patterns	Birds, including habitat and migration patterns	Aquatic species, incl. habitat and migration/spawning	Wildlife protected areas	SOCIO-ECONOMIC	Archaeological and cultural historic sites	Employment	Community wellness	Community infrastructure	Human health
Havakvinga	-	-	-	-	-	-	-	-	-	-	-	-	-	-	-	-	-	-	-	-	-	-	-	-	-
Aulapkaininnga		-	-	M	-	-	-	-	-	-	-	-	-		-	-	-	-	-		-	-	-	-	-
Piiqtauniq	-	-	-	-	-	-	-	-	-	-	-	-	-		-	-	-	-	-		-	-	-	-	-

(P = Nakuuyuq, N = Nakuungittut unalu mikhilimaittuq, M = Nakuungittut unalu mikhittaaqtuq, U = Naluyauyuq)

Havaariyauyukhamut Nayugaa



List of Project Geometries

- | | | |
|---|---------|---|
| 1 | polygon | Sea ice in Cambridge Bay |
| 2 | polygon | Permafrost accessible by road outside of town |