

DÉTAILS

Description non technique de la proposition de projet

Anglais: See attached description.

Français: To be translated and submitted

Inuktitut: To be translated and submitted

Inuinnaqtun: To be translated and submitted

Personnel

Personnel on site: 10

Days on site: 119

Total Person days: 1190

Operations Phase: from 2025-07-02 to 2025-10-11

Activités

Emplacement	Type d'activité	Statut des terres	Historique du site	Site à valeur archéologique ou paléontologique	Proximité des collectivités les plus proches et de toute zone protégée
Potential flooded extent of the reservoir	Airstrip use or construction	Crown	Hydrometric data collection currently ongoing.	Unknown. Archaeological studies to commence Summer 2025.	60km to Iqaluit. Near a caribou Calving Area.
Potential flooded extent of the reservoir	Baseline data	Crown	Hydrometric data collection currently ongoing.	Unknown. Archaeological studies to commence Summer 2025.	60km to Iqaluit. Near a caribou Calving Area.
Potential flooded extent of the reservoir	Camp	Crown	Hydrometric data collection currently ongoing.	Unknown. Archaeological studies to commence Summer 2025.	60km to Iqaluit. Near a caribou Calving Area.
Potential flooded extent of the reservoir	Aerial surveys	Crown	Hydrometric data collection currently ongoing.	Unknown. Archaeological studies to commence Summer 2025.	60km to Iqaluit. Near a caribou Calving Area.

Engagement de la collectivité et avantages pour la région

Collectivité	Nom	Organisme	Date de la prise de contact
Information is not available			

Autorisations

Indiquez les zones dans lesquelles le projet est situé:

Autorisations

Organisme de régulation	Description des autorisations	État actuel	Date de l'émission/de la demande	Date d'échéance
Office des eaux du Nunavut	Authorization to Use Water / Deposit Waste Without a Licence	Not Yet Applied		
Gouvernement du Nunavut, ministère de l'Environnement	Wildlife Research Permit	Not Yet Applied		
Indigenous and Northern Affairs Canada	CIRNAC - Class A Land Use Permit	Not Yet Applied		
Pêches et Océans Canada	Fish for Scientific Purposes Permit	Not Yet Applied		
Autre	Government of Nunavut, Department of Culture and Heritage - Class 1 Archaeological Research Permit	Applied, Decision Pending		

Project transportation types

Transportation Type	Utilisation proposée	Length of Use
Air	Helicopter and fixed wing plane	
Water	Small open boat with outboard motor for travel across the potential reservoir	
Land	By foot only	

Project accomodation types

Temporary Camp

Utilisation de matériel

Équipement à utiliser (y compris les perceuses, les pompes, les aéronefs, les véhicules, etc.)

Type d'équipement	Quantité	Taille – Dimensions	Utilisation proposée
AutoSalt water flow monitoring systems	2	24.5 x 23 x 48 tall	The two AutoSalt monitoring systems will be commissioned in the Mckeand River to monitor water flow for a one-year period.

Décrivez l'utilisation du carburant et des marchandises dangereuses

Décrivez l'utilisation de carburant :	Type de carburant	Nombre de conteneurs	Capacité du conteneur	Quantité totale	Unités	Utilisation proposée
Gasoline	fuel	350	20	7000	Liters	ATV Use
Diesel	fuel	200	20	4000	Liters	Camp Gensets
Diesel	fuel	526	20	10520	Liters	Tent Heat

Consommation d'eau

Quantité quotidienne (m3)	Méthodes de récupération de l'eau proposées	Emplacement de récupération de l'eau proposé
0	Treatment of local surface water via pumps.	Unknown at this point but in proximity to the camp.

Déchets

Gestion des déchets

Activités du projet	Type des déchets	Quantité prévue	Méthode d'élimination	Procédures de traitement supplémentaires
Camp	Déchets combustibles	Unknown	Incinerated onsite using a Smart Ash incinerator, with remaining ash and non-incinerable waste slung back to Iqaluit.	N/A
Camp	Eaux grises	Unknown	Treated using a portable system or containerized for safe disposal.	N/A
Camp	Eaux usées (matières de vidange)	Unknown	Collected in sealed containers and regularly flown out for proper disposal in Iqaluit.	N/A

Répercussions environnementales :

Unknown.

Additional Information

SECTION A1: Project Info

SECTION A2: Allweather Road

SECTION A3: Winter Road

SECTION B1: Project Info

SECTION B2: Exploration Activity

SECTION B3: Geosciences

SECTION B4: Drilling

SECTION B5: Stripping

SECTION B6: Underground Activity

SECTION B7: Waste Rock

SECTION B8: Stockpiles

SECTION B9: Mine Development

SECTION B10: Geology

SECTION B11: Mine

SECTION B12: Mill

SECTION C1: Pits

SECTION D1: Facility

SECTION D2: Facility Construction

SECTION D3: Facility Operation

SECTION D4: Vessel Use

SECTION E1: Offshore Survey

SECTION E2: Nearshore Survey

SECTION E3: Vessel Use

SECTION F1: Site Cleanup

SECTION G1: Well Authorization

SECTION G2: Onland Exploration

SECTION G3: Offshore Exploration

SECTION G4: Rig

SECTION H1: Vessel Use

SECTION H2: Disposal At Sea

SECTION I1: Municipal Development

Description de l'environnement existant : Environnement physique

Description de l'environnement existant : Environnement biologique

Description de l'environnement existant : Environnement socio-économique

Miscellaneous Project Information

Identification des répercussions et mesures d'atténuation proposées

Répercussions cumulatives

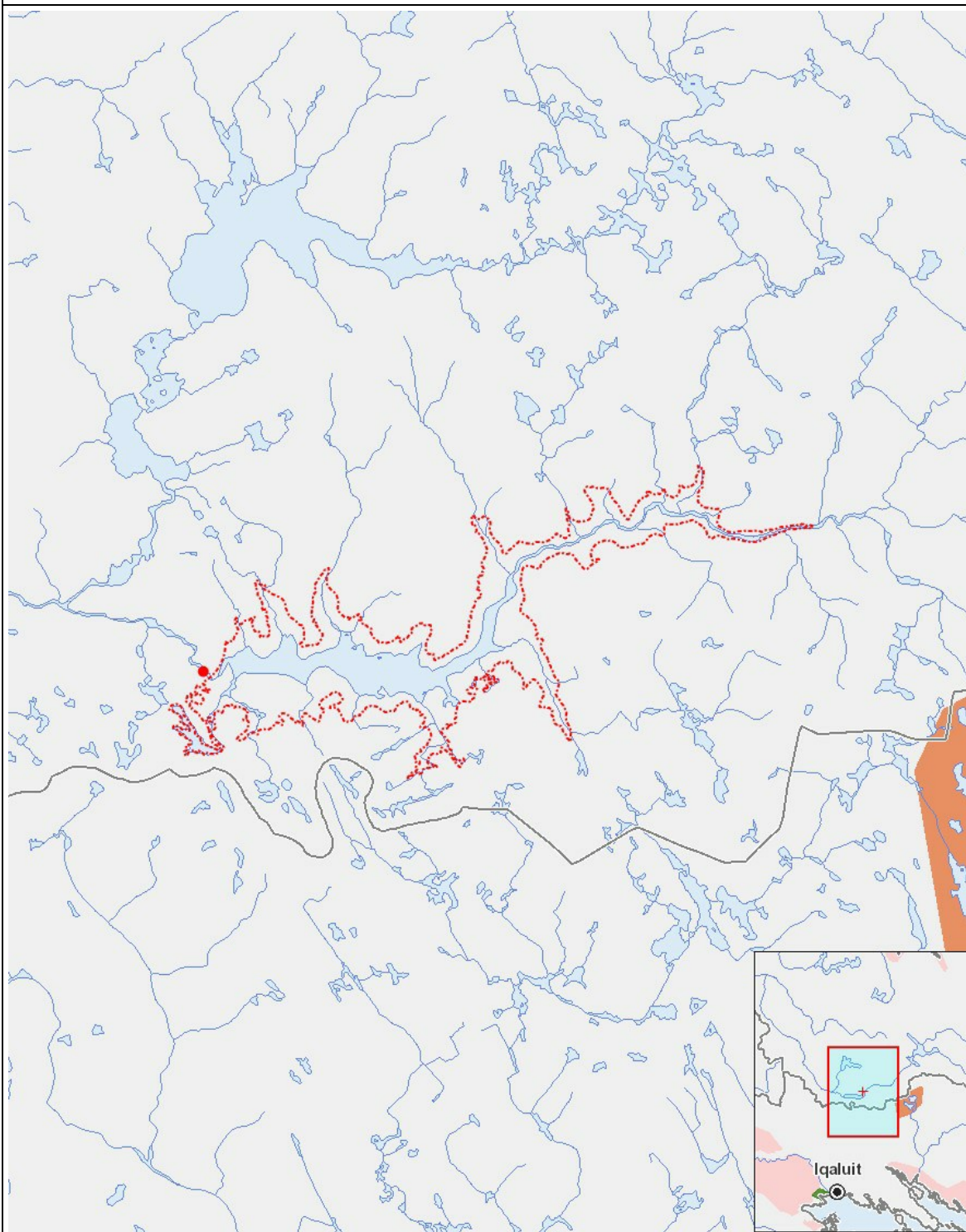
Impacts

Identification des répercussions environnementales

	PHYSICAL	Designated environmental areas	Ground stability	Permafrost	Hydrology / Limnology	Water quality	Climate conditions	Eskers and other unique or fragile landscapes	Surface and bedrock geology	Sediment and soil quality	Tidal processes and bathymetry	Air quality	Noise levels	BIOLOGICAL	Vegetation	Wildlife, including habitat and migration patterns	Birds, including habitat and migration patterns	Aquatic species, incl. habitat and migration/spawning	Wildlife protected areas	SOCIO-ECONOMIC	Archaeological and cultural historic sites	Employment	Community wellness	Community infrastructure	Human health
Construction	-	-	-	-	-	-	-	-	-	-	-	-	-	-	-	-	-	-	-	-	-	-	-	-	-
Exploitation	-	-	-	-	-	-	-	-	-	-	-	-	-	-	-	-	-	-	-	-	-	-	-	-	-
Désaffectation	-	-	-	-	-	-	-	-	-	-	-	-	-	-	-	-	-	-	-	-	-	-	-	-	-

(P = Positive, N = Négative et non gérable, M = Négative et gérable, U = Inconnue)

Site du projet



Liste des géométries de projet

- | | | |
|---|----------|---|
| 1 | polyline | Potential flooded extent of the reservoir |
| 2 | point | Potential outflow location |