

Additional Information

SECTION A1: Project Info

SECTION A2: Allweather Road

SECTION A3: Winter Road

SECTION B1: Project Info

SECTION B2: Exploration Activity

SECTION B3: Geosciences

SECTION B4: Drilling

SECTION B5: Stripping

SECTION B6: Underground Activity

SECTION B7: Waste Rock

SECTION B8: Stockpiles

SECTION B9: Mine Development

SECTION B10: Geology

SECTION B11: Mine

SECTION B12: Mill

SECTION C1: Pits

SECTION D1: Facility

SECTION D2: Facility Construction

SECTION D3: Facility Operation

SECTION D4: Vessel Use

SECTION E1: Offshore Survey

SECTION E2: Nearshore Survey

SECTION E3: Vessel Use

There are no residual effects expected subsequent to the implementation of Project mitigation and monitoring measures. A CEMP (attached) has been developed that details measure to be implemented to minimize negative environmental and socio-economic effects associated with the construction phase of the Project. A Request for Review (RFR) will be submitted to Fisheries and Oceans Canada – Fish and Fish Habitat Program (DFO-FFHPP) to confirm if a Fisheries Act Authorization (FAA) is required. This is a community project, being led by the Hamlet. The community is very much looking forward to this long-awaited benefit from improved safety and efficiency of sealift operations. The community does not anticipate any major effects on wildlife from noise and construction activities. The effects on wildlife from the Project will be minimal and temporary and no concerns regarding impacts to wildlife were expressed. There is very limited harvesting, if any, in or around the Project and hunters do not anticipate that construction will have any impacts on wildlife or their ability to continue subsistence activities such as hunting, fishing, trapping, and gathering. A summary of potential impacts is provided in Section 3 of the CEMP. Proposed mitigation measures are detailed in Section 4.2, Table 4-1 of the CEMP.

Cumulative Effects

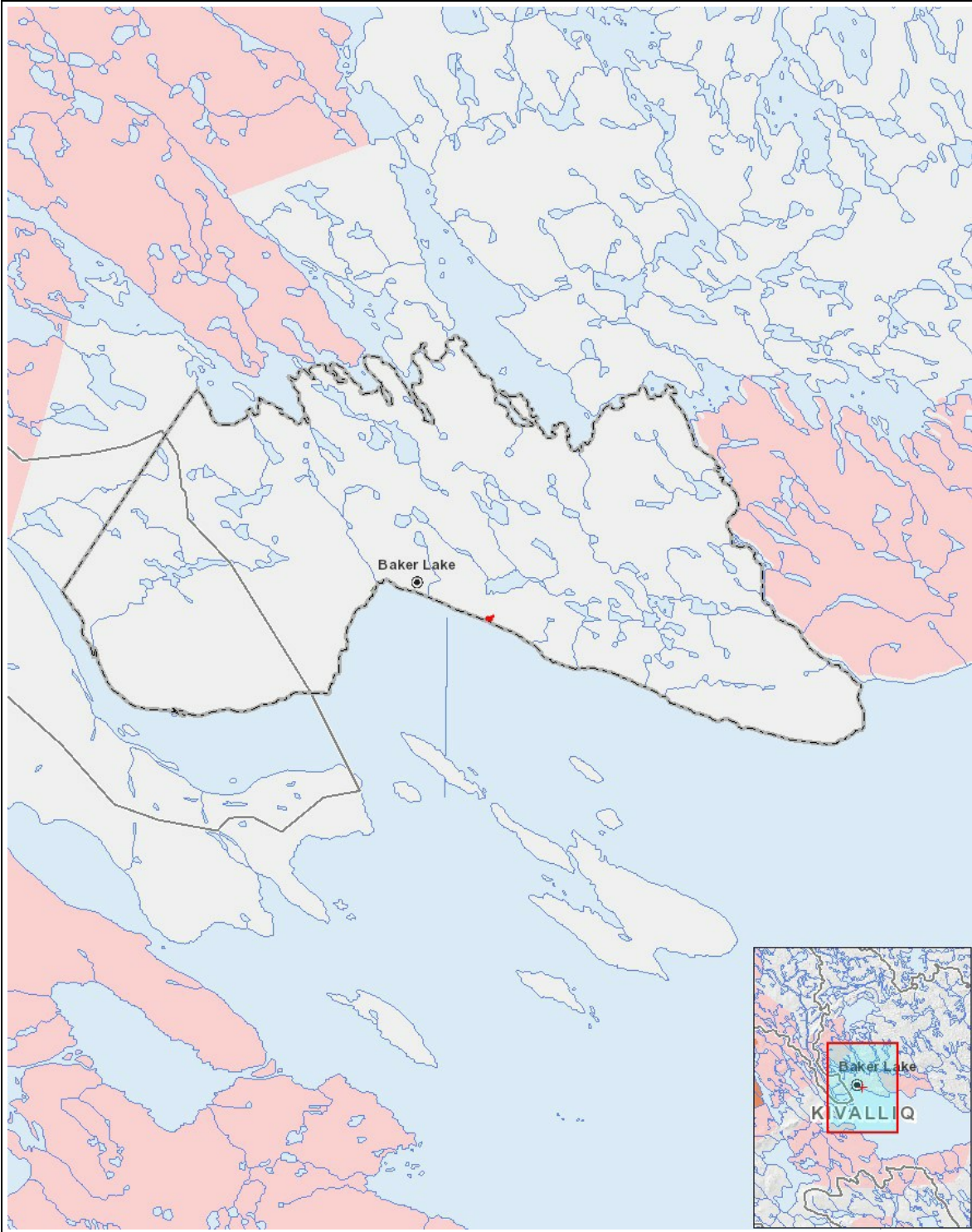
All impacts from the Project were considered either "Positive" or "Negative and Mitigatable" and thus no residual effects are expected subsequent to implementation of mitigation and monitoring measures.

Impacts

ደጋፊ ልማት ስራ ለግብርና ስራ ለጋራ ልማት

	PHYSICAL	Designated environmental areas	Ground stability	Permafrost	Hydrology / Limnology	Water quality	Climate conditions	Eskers and other unique or fragile landscapes	Surface and bedrock geology	Sediment and soil quality	Tidal processes and bathymetry	Air quality	Noise levels	BIOLOGICAL	Vegetation	Wildlife, including habitat and migration patterns	Birds, including habitat and migration patterns	Aquatic species, incl. habitat and migration/spawning	Wildlife protected areas	SOCIO-ECONOMIC	Archaeological and cultural historic sites	Employment	Community wellness	Community infrastructure	Human health
ከፍተኛ																									
Municipal and Industrial Development	-	-	-	-	M	-	-	-	M	M	M	M		M	M	M	M		-	-	P	M	M	M	M
ከፍተኛ																									
Municipal and Industrial Development	-	-	-	-	-	-	-	-	-	-	-	M	M		-	-	-	-	-	-	P	P	P	P	
አጠቃላይ																									
-	-	-	-	-	-	-	-	-	-	-	-	-	-	-	-	-	-	-	-	-	-	-	-	-	-

(P = ለግብርና ስራ ስራ, N = ለግብርና ስራ ስራ ለግብርና ስራ ስራ, M = ለግብርና ስራ ስራ ለግብርና ስራ ስራ, U = ለግብርና ስራ ስራ ስራ ስራ)



List of Project Geometries

1	polyline	Hamlet of Baker Lake New Sealift
---	----------	----------------------------------