



## **NIRB Uuktuutinga Ihivriughikhamut #126194**

### **FISHES: Fostering Indigenous Small-scale fisheries for Health, Economy, and food Security**

**Uuktuutinga Qanurittuq:** New

**Havaap Qanurittunia:** Scientific Research

**Uuktuutinga Ublua:** Tuesday, June 10, 2025

**Period of operation:** from 2026-04-01 to 2028-12-31

**Havauhikhaq Ikayuqtinga:** Jean-Sebastien Moore  
Université Laval - Institute of Integrative Biology and Systems  
1030 Av De La Médecine  
Quebec Quebec G1V 0A6  
Canada  
Hivayautit Nampanga:: 5818881868, Kayumiktukkut Nampanga::

## Tukhiannaqtunik havaariya uyumayumik uqauhiyun

Uiviititut: L'insécurité alimentaire est un grave problème dans le Canada Nordique. L'augmentation du transport, du tourisme, de l'exploration minière et du développement en général pose de sérieux risques pour la biodiversité aquatique nordique ainsi que les pêches qu'elle supporte. De plus, les changements environnementaux et leur influence sur la répartition géographique et l'abondance des communautés de poissons menacent la viabilité des communautés nordiques, leurs pratiques de récolte traditionnelles et leur capacité à se procurer des aliments de qualité. Conséquemment, réduire les impacts négatifs potentiels de ces menaces sur les pêcheries nordiques sera crucial pour les communautés qui en dépendent. Pour ces pêcheries, l'identification de régions d'importance pour les récoltes de subsistance et commerciale, ainsi que la détermination de la composition génétique des populations qui y sont récoltées, seront cruciaux pour leur gestion durable. Le projet FISHERS vise à développer et appliquer des outils génomiques de concert avec des connaissances Écologiques Traditionnelles pour répondre à des défis critiques et des opportunités liées à la sécurité alimentaire et les pêcheries commerciales, récréationnelles et de subsistance (CRS) des peuples du Nord du Canada (Communautés Inuit, Cris et Dené). Nous allons développer ces outils génomiques pour sept espèces d'importance pour les communautés nordiques et utiliser ces ressources pour identifier les populations distinctes, évaluer leur vulnérabilité aux conditions climatiques futures, quantifier leur contribution aux pêcheries de stock mixtes et mesurer la contribution de poissons issus d'écloserie dans les pêcheries de subsistance. En utilisant un cadre de travail innovant alliant données scientifiques et connaissances écologiques traditionnelles, nous visons à supporter le développement durable des pêcheries CRS.

[illegible]

**Personnel**

Personnel on site: 1

Days on site: 14

Total Person days: 14

Operations Phase: from 2025-04-01 to 2026-03-31

Operations Phase: from 2026-04-01 to 2028-12-31

Post-Closure Phase: from to

## Hulilukaarutit

Inigiya	Hulilukaarut Qanurittuq	Nunannga Qanurittaakhaanik	Initurlinga qanuritpa	Initurlinga utuqqarnitat unaluuniit Ingilraaqnitat Uyarannguqtut akhuurninnga	Qanitqiyauyuq qanitqiamut nunallaat kitulluuniit ahiruqtailiyainnit nuna
7 Polygon - South Main Land Murchison, Hayes River, Back River	Sampling sites	Marine	N/A	N/A	N/A
1 Polygon - Boothia North - Potential Commercial Fishing - 200 Samples	Sampling sites	Marine	N/A	N/A	N/A
2 Polygon - Boothia East Coast - 100 Samples	Sampling sites	Marine	N/A	N/A	N/A
4. Polygon - Boothia West Coast - 100 Samples	Sampling sites	Marine	N/A	N/A	N/A
Polygon 6 Gjoa Haven Bay - Murchison Bay 100 Samples	Sampling sites	Marine	N/A	N/A	N/A
5 Polygon King William Island -100 samples	Sampling sites	Marine	N/A	N/A	N/A
3. Polygon Boothia Center-Taloyoak 150 samples	Sampling sites	Marine	N/A	N/A	N/A

## Nunaliin Ilauyun, Aviktuqhimayuniitunullu Ikayuuhiarunguyun

Nunauyuq	Atia	Timiuyuq	Upluani Uqaqatigiyaungmata
Urhuqtuuq	Anthony Anguttitauruq	Gjoa Haven Hunters & Trappers Association	2025-02-11
Taloyoak	Jimmy Ullikatalik	Taloyoak Umarulirigut Association	2025-02-11

# Angiuttauvaktunik

Naunaiqlugu nunanga talvani havauhikhaq ittuq:

Angiuttauvaktunik

Munariniqmut Ayuittiaqtuq	Angirutinga Qanurittuq	Tadja Qanurittaakhaanik	Ublua Tuniyauyuq/Uuktuqtuq	Umikvikhaa Ublua
Iqalukhiurniqmut Tariuqmilu Kaanata	License to Fish for Scientific Purposes (License # S- 25/26-1004- NU) obtained conditional to project approval.	Active	2025-04-30	2026-03-31
Hunters and Trappers Associations/Organizations	Letters of Support - Taloyoak Umarulirigut Association and Gjoa Haven Hunters & Trappers Association	Active	2025-02-11	2028-12-31

## Project transportation types

Transportation Type	Qanuq Atuqtauniarmangaa	Length of Use
Air	Air transport will be required for Laval University supporting personnel	
Water	Water (boat) transport will be required to reach sampling sites	

## Project accomodation types

Temporary Camp

Permanent Camp

Nunauyuq

# Ihuaqutivaluin Atuqtauyukhan

Hanalrutit atuqtaunahuat (ukuallu ikuutat, pampiutainnik, tingmitinik, akhaluutinik, hunaluuniit)

Hanalrutit Qanurittuq	Qaffiuyut	Aktikkulaanga – Qanurittullu	Qanuq Atuqtauniarmangaa
Fishing net	N/A	N/A	Subsistence fisheries, samples will be taken from the catch
Boat	1	N/A	Transport
ATV	1	N/A	Transport

## Qanurittuq Urhuqyuaq unalu Qayangnaqtut Hunavaluit Aturninnga

Qanurittuq urhuqyuaq hunavaluit aturninnga:	Urhuqyuaq Qanurittuq	Qaffiuyut qattaryut	Qattaryuk Aktikkulaanga	Atauttimut Qaffiuyut	Ilanga	Qanuq Atuqtauniarmangaa
Gasoline	fuel	1	50	50	Gallons	Transport

## Imaqmik Aturninnga

Ubluq qanuraaluk (m3)	Aturumayain imavaluin utiqtittagaani qanuq	Atulirumayain imavaluin utiqtittagani humi
0		

# Iqqakuq

## Ikkakunik Munakgiyauyunik

Havauhikhaq Hulilukaarut	Qanurittuq Iqqakut	Ihumagiyauyuq Qanuraaluktut Atuqtait	Qanuq Iqqakuurniarmangaa	Halummaqtirarnirutikhan piyutin
Scientific/International Polar Year Research	Other, Fish carcasses	100 fish	The fish caught will be kept by local harvesters for consumption. The carcasses will be disposed of by them.	Non applicable

### Avatiliriniqmut Ayurhautingit:

Environmental impacts should be minimal, and the project should have no further influence on the environment than the existent subsistence fisheries already have (e.g. some bycatch of untargeted species, which are often used as dog food).

# **Additional Information**

**SECTION A1: Project Info**

**SECTION A2: Allweather Road**

**SECTION A3: Winter Road**

**SECTION B1: Project Info**

**SECTION B2: Exploration Activity**

**SECTION B3: Geosciences**

**SECTION B4: Drilling**

**SECTION B5: Stripping**

**SECTION B6: Underground Activity**

**SECTION B7: Waste Rock**

**SECTION B8: Stockpiles**

**SECTION B9: Mine Development**

**SECTION B10: Geology**

**SECTION B11: Mine**

**SECTION B12: Mill**

**SECTION C1: Pits**

**SECTION D1: Facility**

**SECTION D2: Facility Construction**

**SECTION D3: Facility Operation**

**SECTION D4: Vessel Use**

**SECTION E1: Offshore Survey**

**SECTION E2: Nearshore Survey**

**SECTION E3: Vessel Use**



## **SECTION F1: Site Cleanup**

## **SECTION G1: Well Authorization**

## **SECTION G2: Onland Exploration**

## **SECTION G3: Offshore Exploration**

## **SECTION G4: Rig**

## **SECTION H1: Vessel Use**

## **SECTION H2: Disposal At Sea**

## **SECTION I1: Municipal Development**

### **Qanurittuq Ittunik Avatinga: Avatingalluanga**

The main goal of this proposal is to provide continued support to the communities of Gjoa Haven and Taloyoak for the ongoing application for a commercial fishing license. There are currently no designated commercial fishing zones in the region.

### **Qanurittuq Ittunik Avatinga: Inuuhimayunut Avatinga**

This project mainly involves Arctic char fisheries. Arctic char is an anadromous species that migrates from its spawning sites in freshwater to its feeding sites at sea in the spring, and comes back from the sea in the fall to overwinter and/or spawn. Arctic char is an abundant species in Arctic aquatic environments and can be found throughout the Arctic Ocean.

### **Qanurittuq Ittunik Avatinga: Inungit-maniliurutingit Avatinga**

This project will involve the communities' subsistence fisheries for arctic char, which mainly happens in the spring and in the fall, when the fish are running between their feeding and spawning sites. Subsistence fisheries for Arctic char are an important activity both culturally, nutritionally and economically. In the proposed project, we collaborate with subsistence fishers to obtain samples from their catch, which we then use to generate high-quality data to assist the fisheries management and support the communities with their commercial fisheries application.

## **Miscellaneous Project Information**

### **Naunaiyainiq ukuninnga Ayurhautingit unalu Piumayaat Ikikliyuumiutinahuarutit**

The proposed procedure reduces considerably the impact of our sampling activities, since we do not cause any further handling and/or mortality of Arctic char than what the already existing subsistence fisheries already cause. This is a net positive impact for our research activities, as opposed to a scenario where we would need to catch fish solely for sampling purposes. The proposed collaborative approach, involving local fishers in the sampling activities has yielded high success, as they know which spots to go to to catch fish. This is a net positive as it has drastically reduced the time and resources required to obtain the required number of samples.

### **Tamatkiumayunik Ihuikgutivaktunik**

The long term goals of this project involve both communities getting a commercial fishing license, which would create jobs and provide regular income for the communities. In the meantime, the data and

management tools generated by our research activities would provide guidance for the durable management of the fish stocks and related harvesting activities by the communities, reinforcing their stewardship over this important resource.

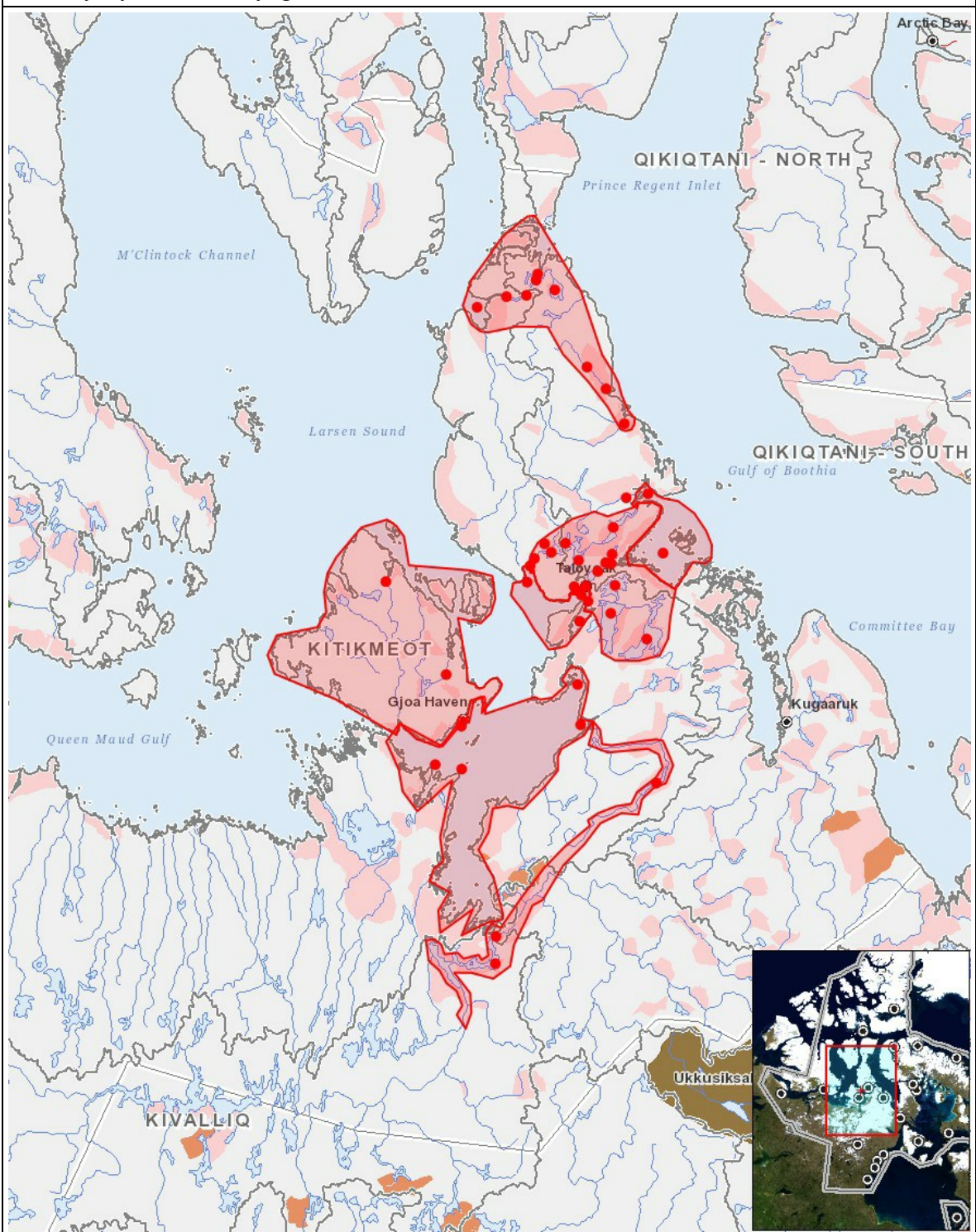
Impacts

Ilitariyauniq Avatiliriniqmut Ayurhautingit

	PHYSICAL	Designated environmental areas	Ground stability	Permafrost	Hydrology / Limnology	Water quality	Climate conditions	Eskers and other unique or fragile landscapes	Surface and bedrock geology	Sediment and soil quality	Tidal processes and bathymetry	Air quality	Noise levels	BIOLOGICAL	Vegetation	Wildlife, including habitat and migration patterns	Birds, including habitat and migration patterns	Aquatic species, incl. habitat and migration/spawning	Wildlife protected areas	SOCIO-ECONOMIC	Archaeological and cultural historic sites	Employment	Community wellness	Community infrastructure	Human health
Havakvinga	-	-	-	-	-	-	-	-	-	-	-	-	-	-	-	-	-	-	-	-	-	-	-	-	-
Aulapkaininnga																									
Sampling sites		-	-	-	-	-	-	-	-	-	-	-	-		-	-	-	M	-		-	P	P	-	-
Piiqtauniq	-	-	-	-	-	-	-	-	-	-	-	-	-		-	-	-	-	-		-	-	-	-	-

(P = Nakuuyuq, N = Nakuungittut unalu mikhilimaittuq, M = Nakuungittut unalu mikhittaaqtuq, U = Naluyauyuq)

## Havaariyauyukhamut Nayugaa



## List of Project Geometries

- [illegible]

11 point	Back River
12 point	Richardson Point
13 point	Ogle point
14 point	Hayes River
15 point	Taloyoak
16 point	Netsilik Lake - ᑕᓐᓂᓐ
17 point	Tariuqnittuq - ᑕᓄᓃᓐᓂᓐᓂᓐ
18 point	Kangalasiuvikruaq - ᑲᓐᓕᓄᓈᓐᓂᓐᓂᓐᓂᓐ
19 point	Iqalungmiut (Fishing Weir )
20 point	Petersen Bay
21 point	Amittuqrueq - ᑕᓄᓈᓐᓂᓐᓂᓐ
22 point	Tasiqrueq - ᑕᓄᓈᓐᓂᓐ
23 point	Kanngiqlukruaq - ᑲᓐᓇᓄᓈᓐᓂᓐᓂᓐ
24 point	Aksalikkat - ᑕᓐᓕᓐᓂᓐ
25 point	Abernethy Lake - Qamaninajuk - ᑲᓄᓈᓐᓂᓐ
26 point	Abernethy River Mouth - Arviqtutiaq Bay - ᑕᓐᓂᓐᓂᓐᓂᓐ
27 point	Ilau'nalik - ᑕᓄᓈᓐᓂᓐ
28 point	Thom Bay- Itsuaqtuqvik - ᑕᓐᓂᓐᓂᓐᓂᓐ
29 point	Lord Lindsay Lake - Tasiq - ᑕᓄᓐ
30 point	Lord Mayor Bay
31 point	Garry River - Palliq - ᑕᓐᓂᓐ
32 point	Josephine Bay (Garry River Mouth)
33 point	Spence Bay
34 point	Willerstedt Inlet -Tasiuraq Ilulik - ᑕᓄᓈᓐᓂᓐ ᑕᓐᓂᓐ
35 point	Redfish Lake - Ivitaruqtuq - ᑕᓄᓈᓐᓂᓐᓂᓐ
36 point	Ivitaruqtup Panga - ᑕᓄᓈᓐᓂᓐᓂᓐ ᑕᓐᓂᓐ
37 point	Middle Lake - Tasiqrueq - ᑕᓄᓈᓐᓂᓐ
38 point	Kangalasiuviaqruek - ᑲᓐᓕᓄᓈᓐᓂᓐᓂᓐᓂᓐ
39 point	Angmalurtuq - ᑕᓐᓂᓐᓂᓐ
40 point	Shepard Bay
41 point	Inglis Bay
42 point	Murchinson Lake - Tahiararřuaq ᑕᓄᓈᓐᓂᓐᓂᓐ
43 point	Port Parry - Tununiup qamania - ᑕᓄᓈᓐᓂᓐ ᑲᓄᓈᓐ
44 point	Jekyll Lake - Uplasaulikruaq - ᑕᓐᓂᓐᓂᓐᓂᓐᓂᓐ
45 point	Krusenstern Lake - Tigluaqvik - ᑕᓐᓂᓐᓂᓐᓂᓐ
46 point	Lady Melville Lake - Tasinajuk - ᑕᓄᓈᓐ
47 point	Kangikjuke Lake - Kangiqluk - ᑲᓐᓇᓄᓈᓐ
48 point	Hansteen Lake -Tasiqrueq - ᑕᓄᓈᓐᓂᓐ
49 point	Pangnikto Lake - Panngnirtuq - ᑕᓐᓂᓐᓂᓐᓂᓐ
50 point	Amitsuq - ᑕᓄᓈᓐ
51 point	Kanqiqqlunajuk - ᑲᓐᓇᓄᓈᓐᓂᓐᓂᓐ