

Tukhiannaqtunik havaariyauyumayumik uqauhiuyun

Uiviititut: Le Bureau Géoscientifique Canada-Nunavut propose un programme de recherche qui prendra place le 13-28 août 2025. Le projet sera ciblé sur une région de 30 kilomètres carrés, près du lac Sylvia Grinnell, autour de 50 km au nord-ouest d'Iqaluit. Le but du projet est d'identifier la source dans le substrat rocheux des grains de cassitérite et scheelite, qui ont été identifiés dans les échantillons du matériel surficiel après un programme de recherche en 2015-16. Cassitérite est une source majeure pour la production d'étain, et scheelite est une source majeure pour la production de la titane. Le projet sera basé à Iqaluit, et supporté par hélicoptère sans nécessité des caches de carburant. L'équipe de recherche comprendra 6 personnes. Dix jours du programme sera assigné à cartographie du substrat rocheux, et six jours pour les études thématiques. L'échantillonnage supporté par hélicoptère sera à haute élévation pendant des vols de transport. La faune sera évitée en tout cas.

Inuinnaqtun: As the project is located in the Qikiqtani region we do not have an Inuinnaqtun project description.

Operations Phase: from 2025-08-13 to 2025-08-28

Hulilukaarutit

| Inigiya | Hulilukaarut Qanurittuq | Nunannga Qanurittaakhaanik | Initurlinga qanuritpa | Initurlinga utuqqarnitat unaluuniit Ingilraaqnitat Uyaranguqtut akhuurninnga | Qanitqiyauyuq qanitqiamut nunallaat kitulluuniit ahiruqtaliyainnit nuna |
|-----------------|--|----------------------------|--|--|---|
| SGGP field area | Scientific/International Polar Year Research | Crown | Geological research has taken place regularly in the area over the last two decades. | Undetermined. | Study area is approximately 60 kilometres northwest of Iqaluit. |

Nunaliin Ilauyun, Aviktuqhimayuniitunullu Ikayuuhiarunguyun

| Nunauyuq | Atia | Timiuyuq | Upluani Uqaqatigiyaungmata |
|----------|-------|------------|----------------------------|
| Iqaluit | Sally | Amaruq HTA | 2025-05-14 |

Angiuttauvaktunik

Naunaiqlugu nunanga talvani havauhikhaq ittuq:

Angiuttauvaktunik

| Munariniqmut Ayuittiaqtuq | Angirutinga Qanurittuq | Tadja Qanurittaakhaanik | Ublua Tuniyauyuq/Uuktuqtuq | Umikvikhaa Ublua |
|--|---|---------------------------|----------------------------|------------------|
| Nunaqaqqaahimayuliriyikkut Ukiuqtaqtumi Pivalliani | CIRNAC land use permit for Crown land | Applied, Decision Pending | | |
| Hunters and Trappers Associations/Organizations | Amaruq HTA board supports our research activities | Active | 2025-05-14 | |
| Qikiqtani Inuit Katimayit | Application for land lease for IOL surface lands access, application 320545 | Applied, Decision Pending | | |

Project transportation types

| Transportation Type | Qanuq Atuqtauniarmangaa | Length of Use |
|---------------------|---|---------------|
| Air | Helicopter-supported, helicopter based in Iqaluit | |
| Land | Hiking | |

Project accomodation types

Temporary Camp

Alaanut,

Ihuaqutivaluin Atuqtauyukhan

Hanalrutit atuqtaunahuat (ukuallu ikuutat, pampiutainnik, tingmitinik, akhaluutinik, hunaluuniit)

| Hanalrutit Qanurittuq | Qaffiuyut | Aktikkulaanga – Qanurittullu | Qanuq Atuqtauniarmangaa |
|-----------------------|-----------|------------------------------|---|
| helicopter | 1 | 1 | Helicopter for transport between Iqaluit airport and field research area. |
| helicopter | 1 | 1 | Helicopter for transport between Iqaluit airport and field research area. |

Qanurittuq Urhuqyuaq unalu Qayangnaqtut Hunavaluit Aturninnga

| Qanurittuq urhuqyuaq hunavaluit aturninnga: | Urhuqyuaq Qanurittuq | Qaffiuyut qattaryut | Qattaryuk Aktikkulaanga | Atauttimut Qaffiuyut | Ilanga | Qanuq Atuqtauniarmangaa |
|---|----------------------|---------------------|-------------------------|----------------------|---------|-------------------------|
| Aviation fuel | fuel | 10 | 40 | 400 | Gallons | helicopter refueling |

Imaqmik Aturninnga

| Ubluq qanuraaluk (m3) | Aturumayain imavaluin utiqittagaani qanuq | Atulirumayain imavaluin utiqittagani humi |
|-----------------------|---|---|
| 1 | By hand, via filling bottles | Streams in project activity area |

Iqqakuq

Ikkakunik Munakgiyauyunik

| Havauhikhaq Hulilukaarut | Qanurittuq Iqqakut | Ihumagiyauyuq Qanuraaluktut Atuqtait | Qanuq Iqqakuurniarmangaa | Halummaqtirarnirutikhan piyutin |
|-----------------------------|------------------------------------|--|---|------------------------------------|
| Camp | Ikulalimanngittun iqqakuuvaluin | minimal | Any noncombustible waste materials will be packed out and returned to Iqaluit at camp teardown. | none |

Avatiliriniqmut Ayurhautingit:

Care will be taken to avoid unnecessary impacts on vegetation when landing helicopter, while on hike traverses, or while in temporary camp. Noise from helicopter will be mitigated by ensuring flight altitude is sufficient to avoid impacts on wildlife. Rock and sediment samples will be removed from the environment, but care will be taken to prevent unnecessary damage to outcrops when samples are taken from bedrock.

Additional Information

SECTION A1: Project Info

SECTION A2: Allweather Road

SECTION A3: Winter Road

SECTION B1: Project Info

SECTION B2: Exploration Activity

SECTION B3: Geosciences

SECTION B4: Drilling

SECTION B5: Stripping

SECTION B6: Underground Activity

SECTION B7: Waste Rock

SECTION B8: Stockpiles

SECTION B9: Mine Development

SECTION B10: Geology

SECTION B11: Mine

SECTION B12: Mill

SECTION C1: Pits

SECTION D1: Facility

SECTION D2: Facility Construction

SECTION D3: Facility Operation

SECTION D4: Vessel Use

SECTION E1: Offshore Survey

SECTION E2: Nearshore Survey

SECTION E3: Vessel Use

SECTION F1: Site Cleanup

SECTION G1: Well Authorization

SECTION G2: Onland Exploration

SECTION G3: Offshore Exploration

SECTION G4: Rig

SECTION H1: Vessel Use

SECTION H2: Disposal At Sea

SECTION I1: Municipal Development

Qanurittuq Ittunik Avatinga: Avatingalluanga

Qanurittuq Ittunik Avatinga: Inuuhimayunut Avatinga

Qanurittuq Ittunik Avatinga: Inungit-maniliurutingit Avatinga

Miscellaneous Project Information

Naunaiyainiq ukuninnga Ayurhautingit unalu Piumayaat Ikikliyuumiutinahuarutit

Tamatkiumayunik Ihuikgutivaktunik

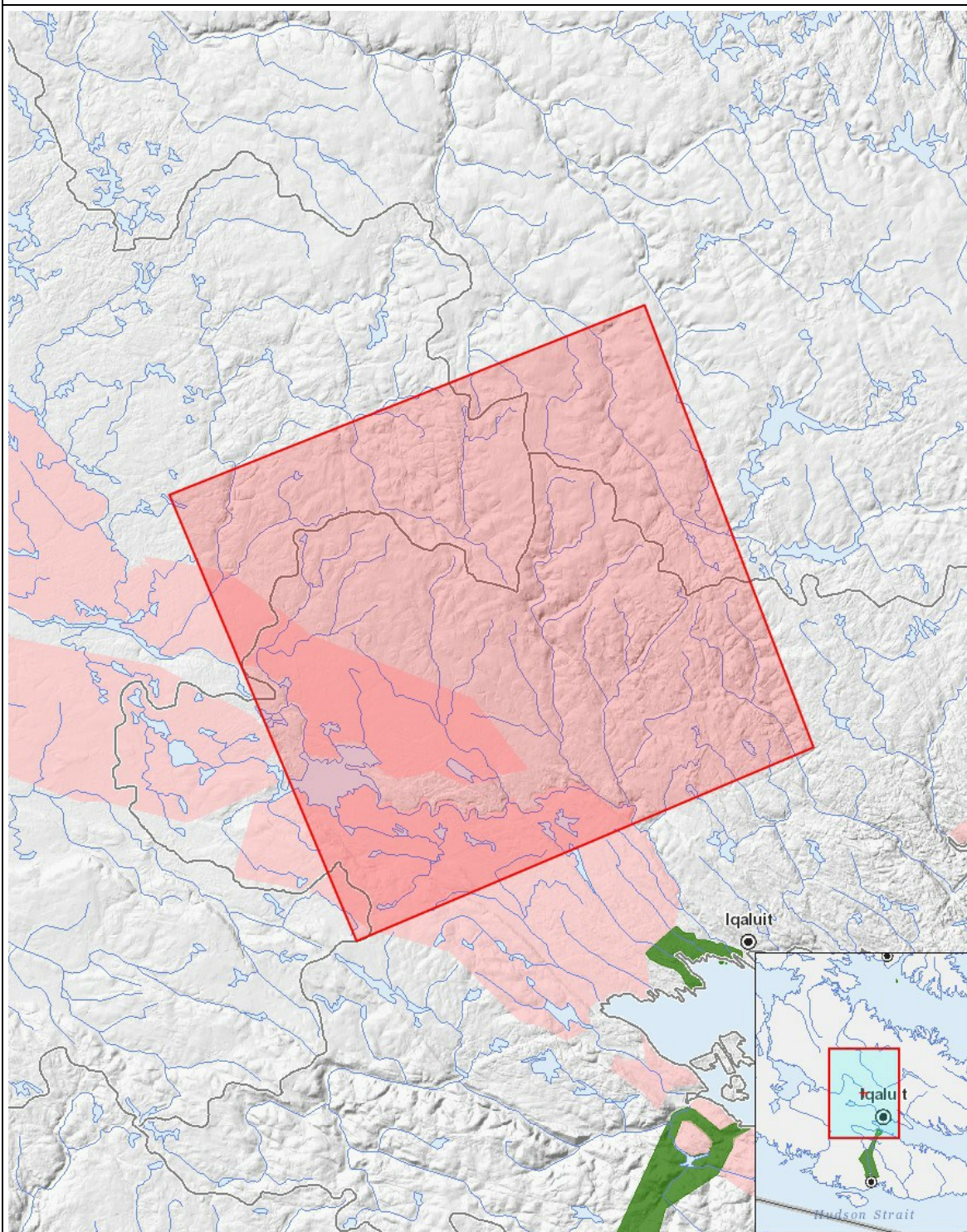
Impacts

Ilitariyauniq Avatiliriniqmut Ayurhautingit

| | PHYSICAL | Designated environmental areas | Ground stability | Permafrost | Hydrology / Limnology | Water quality | Climate conditions | Eskers and other unique or fragile landscapes | Surface and bedrock geology | Sediment and soil quality | Tidal processes and bathymetry | Air quality | Noise levels | BIOLOGICAL | Vegetation | Wildlife, including habitat and migration patterns | Birds, including habitat and migration patterns | Aquatic species, incl. habitat and migration/spawning | Wildlife protected areas | SOCIO-ECONOMIC | Archaeological and cultural historic sites | Employment | Community wellness | Community infrastructure | Human health |
|--|----------|--------------------------------|------------------|------------|-----------------------|---------------|--------------------|---|-----------------------------|---------------------------|--------------------------------|-------------|--------------|------------|------------|--|---|---|--------------------------|----------------|--|------------|--------------------|--------------------------|--------------|
| Havakvinga | - | - | - | - | - | - | - | - | - | - | - | - | - | - | - | - | - | - | - | - | - | - | - | - | - |
| Aulapkaininnga | | | | | | | | | | | | | | | | | | | | | | | | | |
| Scientific/International Polar Year Research | - | M | M | - | - | - | - | M | M | M | - | - | M | | M | M | M | M | - | | U | P | U | P | P |
| Piiqtauniq | - | - | - | - | - | - | - | - | - | - | - | - | - | - | - | - | - | - | - | - | - | - | - | - | - |

(P = Nakuuyuq, N = Nakuungittut unalu mikhilimaittuq, M = Nakuungittut unalu mikhittaaqtuq, U = Naluyauyuq)

Havaariyauyukhamut Nayugaa



List of Project Geometries

| | | |
|---|---------|-----------------|
| 1 | polygon | SGGP field area |
|---|---------|-----------------|