

DETAILS

Non-technical project proposal description

English: To collect 5 kg (wet weight) of non SARA, marine fishes and invertebrates for Public Display. The Displays are housed in Tokyo Sea Life Park, Tokyo Japan. We intend to collect to a depth of 0 meters to no more than 30 meters of depth, within a radius of no more that 7000 meters from 69° 7' 0 N / 105° 3' 34 W. Marine waters only.

French: NA

Inuktitut: NA

Inuinnaqtun: NA

Personnel

Personnel on site: 4

Days on site: 10

Total Person days: 40

Operations Phase: from 2025-08-16 to 2025-09-26

Activities

Location	Activity Type	Land Status	Site history	Site archaeological or paleontological value	Proximity to the nearest communities and any protected areas
approximate collection area from a depth of 0 to 30 metres, MARINE WATERS ONLY	Sampling sites	Marine	N/A	N/A	N/A
collection within a radius of < 7,000 m from 69.1167 degrees N, -105.0594 degrees W, MARINE WATERS ONLY	Sampling sites	Marine	N/A	N/A	N/A

Community Involvement & Regional Benefits

Community	Name	Organization	Date Contacted
Cambridge Bay	Rose Maksagak	Ikaluktutiak HTO	2025-02-21

Authorizations

Indicate the areas in which the project is located:

Kitikmeot

Authorizations

Regulatory Authority	Authorization Description	Current Status	Date Issued / Applied	Expiry Date
Fisheries and Oceans Canada	Licence to collect for Public Display purposes	Applied, Decision Pending		

Project transportation types

Transportation Type	Proposed Use	Length of Use
Water	rented boat	

Project accomodation types

Other,

Material Use

Equipment to be used (including drills, pumps, aircraft, vehicles, etc)

Equipment Type	Quantity	Size - Dimensions	Proposed Use
truck	1	1	transport
Boat	1	1	dive support
SCUBA Tanks	4	1	diving

Detail Fuel and Hazardous Material Use

Detail fuel material use:	Fuel Type	Number of containers	Container Capacity	Total Amount	Units	Proposed Use
Gasoline	fuel	1	100	100	Liters	vehicle

Water Consumption

Daily amount (m3)	Proposed water retrieval methods	Proposed water retrieval location
0	municipal	municipal

Waste

Waste Management

Project Activity	Type of Waste	Projected Amount Generated	Method of Disposal	Additional treatment procedures
Information is not available				

Environmental Impacts:

The planned activities are shore based SCUBA diving using existing public roads for truck access

Additional Information

SECTION A1: Project Info

SECTION A2: Allweather Road

SECTION A3: Winter Road

SECTION B1: Project Info

SECTION B2: Exploration Activity

SECTION B3: Geosciences

SECTION B4: Drilling

SECTION B5: Stripping

SECTION B6: Underground Activity

SECTION B7: Waste Rock

SECTION B8: Stockpiles

SECTION B9: Mine Development

SECTION B10: Geology

SECTION B11: Mine

SECTION B12: Mill

SECTION C1: Pits

SECTION D1: Facility

SECTION D2: Facility Construction

SECTION D3: Facility Operation

SECTION D4: Vessel Use

SECTION E1: Offshore Survey

SECTION E2: Nearshore Survey

SECTION E3: Vessel Use

SECTION F1: Site Cleanup

SECTION G1: Well Authorization

SECTION G2: Onland Exploration

SECTION G3: Offshore Exploration

SECTION G4: Rig

SECTION H1: Vessel Use

SECTION H2: Disposal At Sea

SECTION I1: Municipal Development

Description of Existing Environment: Physical Environment

Description of Existing Environment: Biological Environment

Description of Existing Environment: Socio-economic Environment

Miscellaneous Project Information

Identification of Impacts and Proposed Mitigation Measures

Cumulative Effects

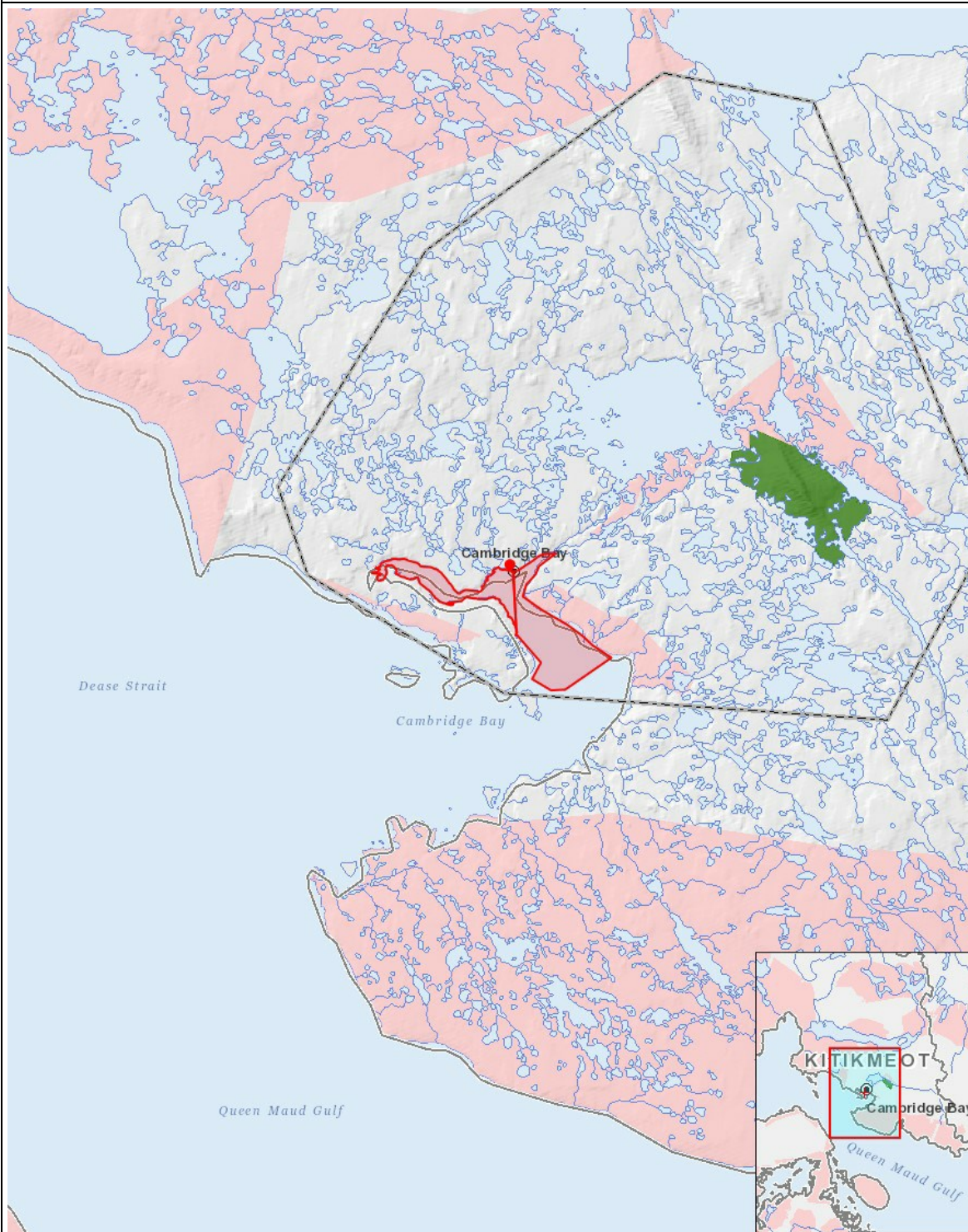
Impacts

Identification of Environmental Impacts

	PHYSICAL	Designated environmental areas	Ground stability	Permafrost	Hydrology / Limnology	Water quality	Climate conditions	Eskers and other unique or fragile landscapes	Surface and bedrock geology	Sediment and soil quality	Tidal processes and bathymetry	Air quality	Noise levels	BIOLOGICAL	Vegetation	Wildlife, including habitat and migration patterns	Birds, including habitat and migration patterns	Aquatic species, incl. habitat and migration/spawning	Wildlife protected areas	SOCIO-ECONOMIC	Archaeological and cultural historic sites	Employment	Community wellness	Community infrastructure	Human health	
Construction	-	-	-	-	-	-	-	-	-	-	-	-	-	-	-	-	-	-	-	-	-	-	-	-	-	
Operation																										
Sampling sites		-	-	-	-	-	-	-	-	-	-	-	-					P	-			-	P	P	-	P
Decommissioning	-	-	-	-	-	-	-	-	-	-	-	-	-	-	-	-	-	-	-	-	-	-	-	-	-	

(P = Positive, N = Negative and non-mitigatable, M = Negative and mitigatable, U = Unknown)

Project Location



List of Project Geometries

- | | |
|-----------|---|
| 1 polygon | *approximate* collection area from a depth of 0 to 30 metres, MARINE WATERS ONLY |
| 2 point | collection within a radius of < 7,000 m from 69.1167 degrees N, -105.0594 degrees W, MARINE WATERS ONLY |