







# ገጽ ፩ ለገጽ ፩ ለገጽ ፩ ለገጽ ፩

ገጽ ፩ ለገጽ ፩ ለገጽ ፩ ለገጽ ፩

Kitikmeot

## ገጽ ፩ ለገጽ ፩ ለገጽ ፩ ለገጽ ፩

ገጽ ፩ ለገጽ ፩ ለገጽ ፩ ለገጽ ፩	ገጽ ፩ ለገጽ ፩ ለገጽ ፩ ለገጽ ፩	ገጽ ፩ ለገጽ ፩ ለገጽ ፩ ለገጽ ፩	ገጽ ፩ ለገጽ ፩ ለገጽ ፩ ለገጽ ፩	ገጽ ፩ ለገጽ ፩ ለገጽ ፩ ለገጽ ፩
ገጽ ፩ ለገጽ ፩ ለገጽ ፩ ለገጽ ፩	Licence to collect for Public Display purposes	Applied, Decision Pending		

### Project transportation types

Transportation Type	ገጽ ፩ ለገጽ ፩ ለገጽ ፩ ለገጽ ፩	Length of Use
Water	rented boat	

### Project accomodation types

ገጽ ፩ ለገጽ ፩ ለገጽ ፩ ለገጽ ፩





# **Additional Information**

**SECTION A1: Project Info**

**SECTION A2: Allweather Road**

**SECTION A3: Winter Road**

**SECTION B1: Project Info**

**SECTION B2: Exploration Activity**

**SECTION B3: Geosciences**

**SECTION B4: Drilling**

**SECTION B5: Stripping**

**SECTION B6: Underground Activity**

**SECTION B7: Waste Rock**

**SECTION B8: Stockpiles**

**SECTION B9: Mine Development**

**SECTION B10: Geology**

**SECTION B11: Mine**

**SECTION B12: Mill**

**SECTION C1: Pits**

**SECTION D1: Facility**

**SECTION D2: Facility Construction**

**SECTION D3: Facility Operation**

**SECTION D4: Vessel Use**

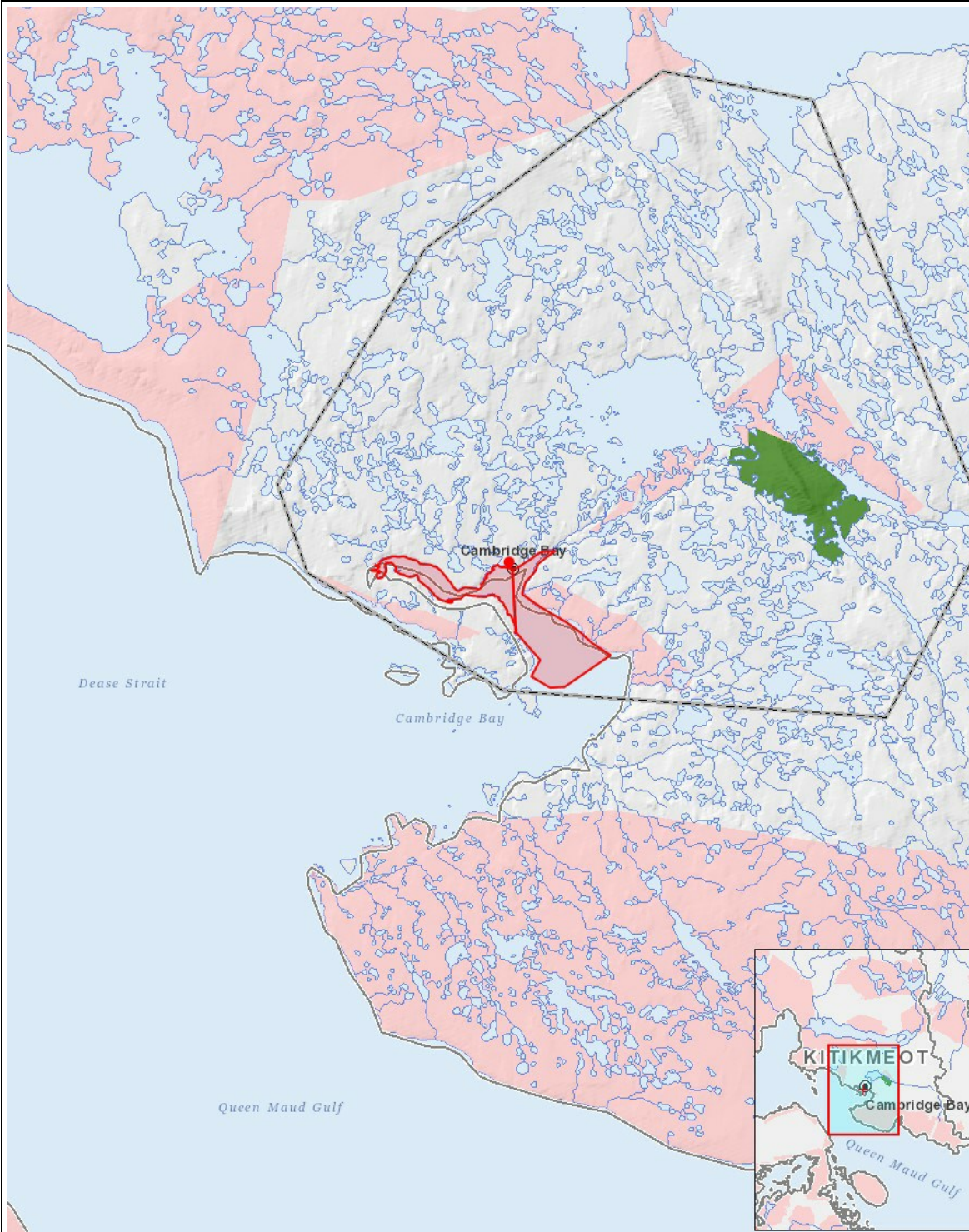
**SECTION E1: Offshore Survey**

**SECTION E2: Nearshore Survey**

**SECTION E3: Vessel Use**







List of Project Geometries

- |           |                                                                                                         |
|-----------|---------------------------------------------------------------------------------------------------------|
| 1 polygon | *approximate* collection area from a depth of 0 to 30 metres, MARINE WATERS ONLY                        |
| 2 point   | collection within a radius of < 7,000 m from 69.1167 degrees N, -105.0594 degrees W, MARINE WATERS ONLY |