



NIRB Uuktuutinga Ihivriuqhikhamut #126214

2025 Tokyo Sea Life Park Public Display Specimen Collection Cambridge Bay, NU

Uuktuutinga Qanurittuq: New

Havaap Qanurittunia: Scientific Research

Uuktuutinga Ublua: Saturday, August 16, 2025

Period of operation: from 2025-08-16 to 2025-09-26

Havauhikhaq Ikayuqtinga: Philip Bruecker
Tokyo Sea Life Park
867 Isabella Point Road
Salt Spring Island BC V8K 1T7
CA
Hivayautit Nampanga:: 604 999 5827, Kayumiktukkut Nampanga:: NA

QANURITTUT

Tukihiannaqtunik havaariyauyumayumik uqauhiuyun

Qablunaatitut: To collect 5 kg (wet weight) of non SARA, marine fishes and invertebrates for Public Display. The Displays are housed in Tokyo Sea Life Park, Tokyo Japan. We intend to collect to a depth of 0 meters to no more than 30 meters of depth, within a radius of no more that 7000 meters from 69° 7' 0 N / 105° 3' 34 W. Marine waters only.

Uviititut: NA

Inuktitut: NA

Inuinnaqtun: NA

Personnel

Personnel on site: 4

Days on site: 10

Total Person days: 40

Operations Phase: from 2025-08-16 to 2025-09-26

Hulilukaarutit

Inigiya	Hulilukaarut Qanurittuq	Nunangga Qanurittaakhaanik	Initurlinga qanuritpa	Initurlinga utuqqarnitat unaluuniit Ingilraaqnitat Uyarannguqtut akhuurningga	Qanitqiyauyuq qanitqiamut nunallaat kitulluuniit ahiruqtaiiyainnit nuna
approximate collection area from a depth of 0 to 30 metres, MARINE WATERS ONLY	Sampling sites	Marine	N/A	N/A	N/A
collection within a radius of < 7,000 m from 69.1167 degrees N, -105.0594 degrees W, MARINE WATERS ONLY	Sampling sites	Marine	N/A	N/A	N/A

Nunaliin Ilauyun, Aviktuqhimayuniitunullu Ikayuuhiarunguyun

Nunauyuq	Atia	Timiuyuq	Upluani Uqaqatigiyaungmata
Ikaluktutiak	Rose Maksagak	Ikaluktutiak HTO	2025-02-21

Angiuttauvaktunik

Naunaiqlugu nunanga talvani havauhikhaq ittuq:

Kitikmeot

Angiuttauvaktunik

Munariniqmut Ayuittiaqtuq	Angirutinga Qanurittuq	Tadja Qanurittaakhaanik	Ublua Tuniyauyuq/Uuktuqtuq	Umikvikhaa Ublua
Iqalukhiurniqmut Tariuqmilu Kaanata	Licence to collect for Public Display purposes	Applied, Decision Pending		

Project transportation types

Transportation Type	Qanuq Atuqtauniarmangaa	Length of Use
Water	rented boat	

Project accomodation types

Alaanut,

Ihuaqutivaluin Atuqtauyukhan

Hanalrutit atuqtaunahuat (ukuallu ikuutat, pampiutainnik, tingmitinik, akhaluutinik, hunaluuniit)

Hanalrutit Qanurittuq	Qaffiuyut	Aktikkulaanga – Qanurittullu	Qanuq Atuqtauniarmangaa
truck	1	1	transport
Boat	1	1	dive support
SCUBA Tanks	4	1	diving

Qanurittuq Urhuqyuaq unalu Qayangnaqtut Hunavaluit Aturninnga

Qanurittuq urhuqyuaq hunavaluit aturninnga:	Urhuqyuaq Qanurittuq	Qaffiuyut qattaryut	Qattaryuk Aktikkulaanga	Atauttimut Qaffiuyut	Ilanga	Qanuq Atuqtauniarmangaa
Gasoline	fuel	1	100	100	Liters	vehicle

Imaqmik Aturninnga

Ubluq qanuraaluk (m3)	Aturumayain imavaluin utiqittagani qanuq	Atulirumayain imavaluin utiqittagani humi
0	municipal	municipal

Iqqakuq

Ikkakunik Munakgiyauyunik

Havauhikhaq Hulilukaarut	Qanurittuq Iqqakut	Ihumagiyauyuq Qanuraaluktut Atuqtait	Qanuq Iqqakuurniarmangaa	Halummaqtirarnirutikhan piyutin
Information is not available				

Avatiliriniqmut Ayurhautingit:

The planned activities are shore based SCUBA diving using existing public roads for truck access

Additional Information

SECTION A1: Project Info

SECTION A2: Allweather Road

SECTION A3: Winter Road

SECTION B1: Project Info

SECTION B2: Exploration Activity

SECTION B3: Geosciences

SECTION B4: Drilling

SECTION B5: Stripping

SECTION B6: Underground Activity

SECTION B7: Waste Rock

SECTION B8: Stockpiles

SECTION B9: Mine Development

SECTION B10: Geology

SECTION B11: Mine

SECTION B12: Mill

SECTION C1: Pits

SECTION D1: Facility

SECTION D2: Facility Construction

SECTION D3: Facility Operation

SECTION D4: Vessel Use

SECTION E1: Offshore Survey

SECTION E2: Nearshore Survey

SECTION E3: Vessel Use

SECTION F1: Site Cleanup

SECTION G1: Well Authorization

SECTION G2: Onland Exploration

SECTION G3: Offshore Exploration

SECTION G4: Rig

SECTION H1: Vessel Use

SECTION H2: Disposal At Sea

SECTION I1: Municipal Development

Qanurittuq Ittunik Avatinga: Avatingalluanga

Qanurittuq Ittunik Avatinga: Inuuhimayunut Avatinga

Qanurittuq Ittunik Avatinga: Inungit-maniliurutingit Avatinga

Miscellaneous Project Information

Naunaiyainiq ukuninga Ayurhautingit unalu Piumayaat Ikikliyuumiutinahuarutit

Tamatkiumayunik Ihuikgutivaktunik

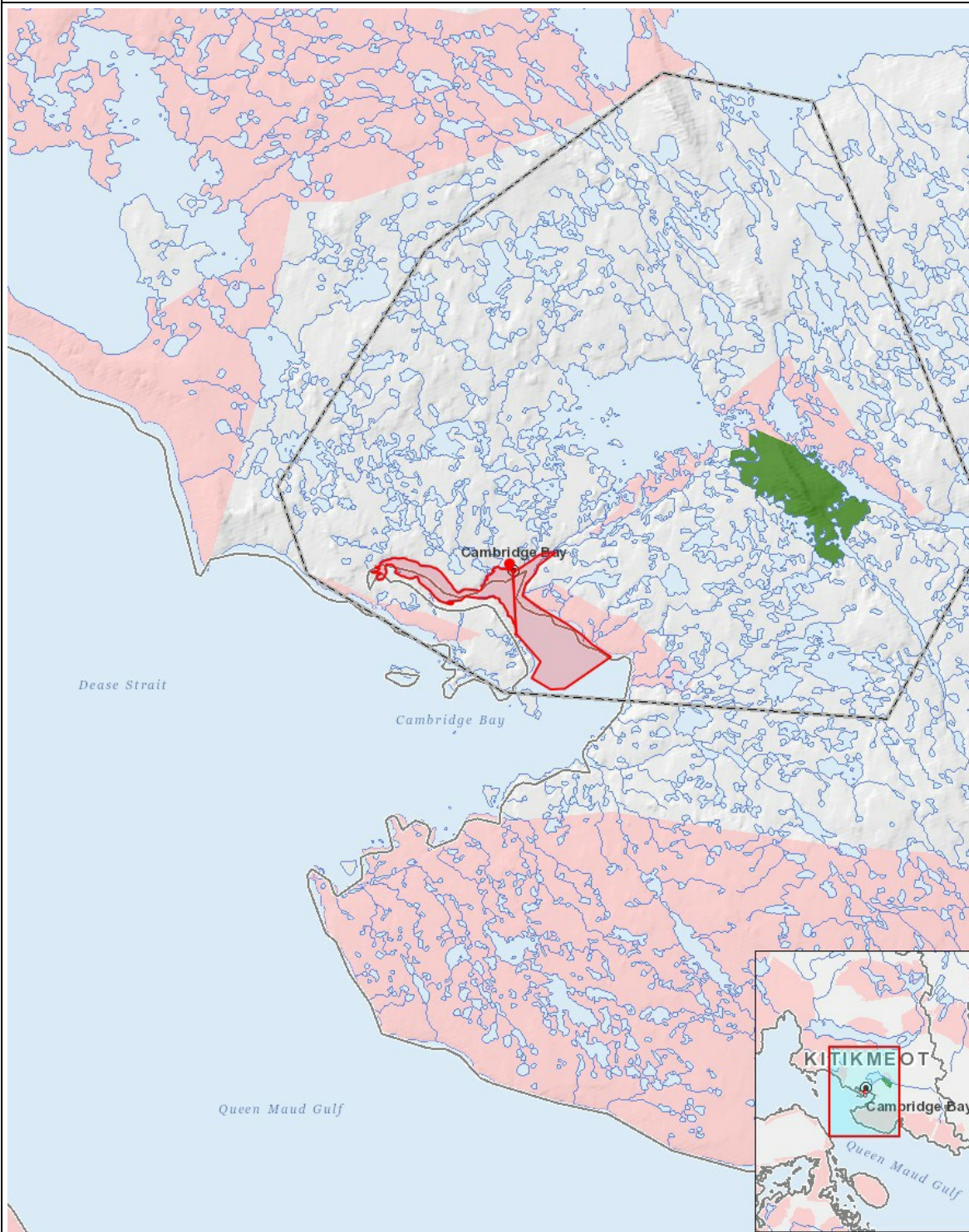
Impacts

Ilitariyauniq Avatiliriniqmut Ayurhauingit

	PHYSICAL	Designated environmental areas	Ground stability	Permafrost	Hydrology / Limnology	Water quality	Climate conditions	Eskers and other unique or fragile landscapes	Surface and bedrock geology	Sediment and soil quality	Tidal processes and bathymetry	Air quality	Noise levels	BIOLOGICAL	Vegetation	Wildlife, including habitat and migration patterns	Birds, including habitat and migration patterns	Aquatic species, incl. habitat and migration/spawning	Wildlife protected areas	SOCIO-ECONOMIC	Archaeological and cultural historic sites	Employment	Community wellness	Community infrastructure	Human health
Havakvinga																									
-	-	-	-	-	-	-	-	-	-	-	-	-	-	-	-	-	-	-	-	-	-	-	-	-	-
Aulapkaininnga																									
Sampling sites	-	-	-	-	-	-	-	-	-	-	-	-	-	-	-	-	-	P	-	-	-	P	P	-	P
Piiqtauniq																									
-	-	-	-	-	-	-	-	-	-	-	-	-	-	-	-	-	-	-	-	-	-	-	-	-	-

(P = Nakuuyuq, N = Nakuungittut unalu mikhilimaittuq, M = Nakuungittut unalu mikhittaaqtuq, U = Naluyauyuq)

Havaariyuyukhamut Nayugaa



List of Project Geometries

- | | |
|-----------|---|
| 1 polygon | *approximate* collection area from a depth of 0 to 30 metres, MARINE WATERS ONLY |
| 2 point | collection within a radius of < 7,000 m from 69.1167 degrees N, -105.0594 degrees W, MARINE WATERS ONLY |