

ገጽ ፩ ለግብይት ጥቅም ለሚያገለግል ስጦታ

ግብይት ለማድረግ ለሚያስፈልጉ ስጦታዎችን ይጠቁሙ፡

Kitikmeot

ገጽ ፩ ለግብይት ጥቅም ለሚያገለግል ስጦታ

| ስጦታው ለማድረግ የሚያስፈልጉ ስጦታዎች ለግብይት ጥቅም ለሚያገለግል ስጦታ ለሚያገለግል ስጦታ ለሚያገለግል ስጦታ | ስጦታው ለማድረግ የሚያስፈልጉ ስጦታዎች ለግብይት ጥቅም ለሚያገለግል ስጦታ ለሚያገለግል ስጦታ | ስጦታው ለማድረግ የሚያስፈልጉ ስጦታዎች ለግብይት ጥቅም ለሚያገለግል ስጦታ ለሚያገለግል ስጦታ | ስጦታው ለማድረግ የሚያስፈልጉ ስጦታዎች ለግብይት ጥቅም ለሚያገለግል ስጦታ ለሚያገለግል ስጦታ | ስጦታው ለማድረግ የሚያስፈልጉ ስጦታዎች ለግብይት ጥቅም ለሚያገለግል ስጦታ ለሚያገለግል ስጦታ |
|---|--|--|--|--|
| ግብይት ለማድረግ የሚያስፈልጉ ስጦታዎች ለግብይት ጥቅም ለሚያገለግል ስጦታ ለሚያገለግል ስጦታ | Licence to collect for Public Display purposes | Applied, Decision Pending | | |

Project transportation types

| Transportation Type | ገጽ ፩ ለግብይት ጥቅም ለሚያገለግል ስጦታ | Length of Use |
|---------------------|----------------------------|---------------|
| Water | rented boat | |

Project accomodation types

ግብይት,

ᐱᐱᓚᐅᓂᐱᓐᓂᓐ

ᐱᓐᓂᓐ ᐱᓐᓂᓐ ᐱᓐᓂᓐ ᐱᓐᓂᓐ ᐱᓐᓂᓐ ᐱᓐᓂᓐ ᐱᓐᓂᓐ ᐱᓐᓂᓐ ᐱᓐᓂᓐ ᐱᓐᓂᓐ

| ᐱᓐᓂᓐ ᐱᓐᓂᓐ ᐱᓐᓂᓐ ᐱᓐᓂᓐ ᐱᓐᓂᓐ ᐱᓐᓂᓐ | ᐱᓐᓂᓐ | ᐱᓐᓂᓐ - ᐱᓐᓂᓐ | ᐱᓐᓂᓐ ᐱᓐᓂᓐ |
|-------------------------------------|------|-------------|--------------|
| truck | 1 | 1 | transport |
| Boat | 1 | 1 | dive support |
| SCUBA Tanks | 4 | 1 | diving |

ᐱᓐᓂᓐ ᐱᓐᓂᓐ ᐱᓐᓂᓐ ᐱᓐᓂᓐ ᐱᓐᓂᓐ ᐱᓐᓂᓐ

| ᐱᓐᓂᓐ ᐱᓐᓂᓐ ᐱᓐᓂᓐ ᐱᓐᓂᓐ ᐱᓐᓂᓐ | ᐱᓐᓂᓐ ᐱᓐᓂᓐ ᐱᓐᓂᓐ ᐱᓐᓂᓐ | ᐱᓐᓂᓐ ᐱᓐᓂᓐ ᐱᓐᓂᓐ | ᐱᓐᓂᓐ ᐱᓐᓂᓐ ᐱᓐᓂᓐ | ᐱᓐᓂᓐ | ᐱᓐᓂᓐ ᐱᓐᓂᓐ ᐱᓐᓂᓐ | ᐱᓐᓂᓐ ᐱᓐᓂᓐ ᐱᓐᓂᓐ |
|--------------------------------|------------------------|-------------------|-------------------|------|-------------------|-------------------|
| Gasoline | fuel | 1 | 100 | 100 | Liters | vehicle |

ᐱᓐᓂᓐ ᐱᓐᓂᓐ ᐱᓐᓂᓐ

| ᐱᓐᓂᓐ ᐱᓐᓂᓐ ᐱᓐᓂᓐ ᐱᓐᓂᓐ | ᐱᓐᓂᓐ ᐱᓐᓂᓐ ᐱᓐᓂᓐ ᐱᓐᓂᓐ | ᐱᓐᓂᓐ ᐱᓐᓂᓐ ᐱᓐᓂᓐ ᐱᓐᓂᓐ |
|------------------------|------------------------|------------------------|
| 0 | municipal | municipal |

Additional Information

SECTION A1: Project Info

SECTION A2: Allweather Road

SECTION A3: Winter Road

SECTION B1: Project Info

SECTION B2: Exploration Activity

SECTION B3: Geosciences

SECTION B4: Drilling

SECTION B5: Stripping

SECTION B6: Underground Activity

SECTION B7: Waste Rock

SECTION B8: Stockpiles

SECTION B9: Mine Development

SECTION B10: Geology

SECTION B11: Mine

SECTION B12: Mill

SECTION C1: Pits

SECTION D1: Facility

SECTION D2: Facility Construction

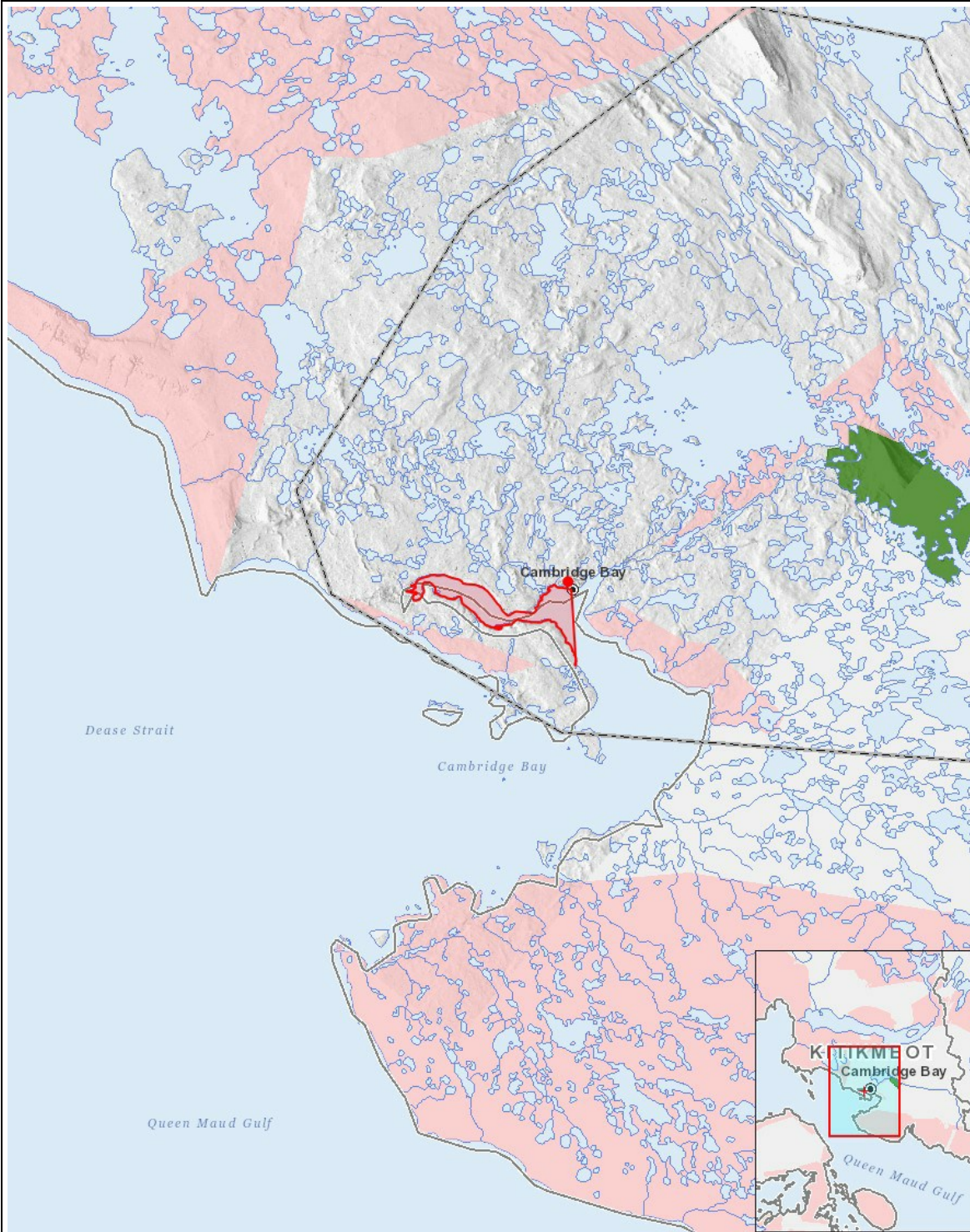
SECTION D3: Facility Operation

SECTION D4: Vessel Use

SECTION E1: Offshore Survey

SECTION E2: Nearshore Survey

SECTION E3: Vessel Use



List of Project Geometries

- | | |
|-----------|---|
| 1 polygon | *approximate* collection area from a depth of 0 to 30 metres, MARINE WATERS ONLY |
| 2 point | collection within a radius of < 7,000 m from 69.1167 degrees N, -105.0594 degrees W, MARINE WATERS ONLY |