



NIRB Uuktuutinga Ihivriuqhikhamut #126214

2025 Tokyo Sea Life Park Public Display Specimen Collection Cambridge Bay, NU

Uuktuutinga Qanurittuq: New

Havaap Qanurittunia: Scientific Research

Uuktuutinga Ublua: Friday, April 24, 2026

Period of operation: from 2026-08-12 to 2026-09-22

Havauhikhaq Ikayuqtinga: Philip Bruecker
Tokyo Sea Life Park
867 Isabella Point Road
Salt Spring Island BC V8K 1T7
CA
Hivayautit Nampanga:: 604 999 5827, Kayumiktukkut Nampanga:: NA

QANURITTUT

Tukihannaqtunik havaariyaumayumik uqauhiuyun

Qablunaatitut: The Tokyo Sea Life Aquarium in Japan would like to collect small marine creatures near Cambridge Bay. Tokyo Sea Life Park Aquarium These sea creature are for public display. These sea creatures are small fish and invertebrates Collecting is via SCUBA diving. We have done this work since 1989. mostly in Resolute Bay. We plan to collect this year in August. Our team has 4 divers. We will announce our diving with the help of the Ekaluktutiak Hunters and Trappers Association. We hope the public will come and see how we collect to bring greater attention to Arctic Marine life.

Uiviititut: NA

Inuktitut: NA

Inuinnaqtun: Japanmi katitiriyumayut mikiyunik tariumi huradjanik haniani IqaluktuutiapTariumi huradjat inungnun tautuktauyukhatTariumi hugadjat mikiyut iqaluit uvalu hauniquqtut hauniquqtut.Katitiriyut aglugaqhutikHavakpaktavut hamna havaakhaq 1989-mit, talvanilluaq Qausuitturmi.Katitiriniaqhimayugut uvani ukiumi Niqiliqivikmi.Iligiikput hitamanik agluqtaqtut Tuhaqtitinaqtugut aglugaqhuta ikayuqtauluta Ekaluktutiak Anguniaqtit Katimayit ...Nigiukhimayugut nunalaani qainiaqtun tautugianganik qanuq katitigivakhimayaptingnik ilitugipkaiyaangat Ukiuktaqtuniitunik tariurmiutanik uumayunik.

Personnel

Personnel on site: 4

Days on site: 10

Total Person days: 40

Operations Phase: from 2026-08-12 to 2026-09-22

Hulilukaarutit

Inigiya	Hulilukaarut Qanurittuq	Nunangga Qanurittaakhaanik	Initurlinga qanuritpa	Initurlinga utuqqarnitat unaluuniit Ingilraaqnitat Uyarannguqtut akhuurningga	Qanitqiyauyuq qanitqiamut nunallaat kitulluuniit ahiruqtaiiyainnit nuna
approximate collection area from a depth of 0 to 30 metres, MARINE WATERS ONLY	Sampling sites	Marine	N/A	N/A	N/A
collection within a radius of < 7,000 m from 69.1167 degrees N, -105.0594 degrees W, MARINE WATERS ONLY	Sampling sites	Marine	N/A	N/A	N/A

Nunaliin Ilauyun, Aviktuqhimayuniitunullu Ikayuuhiarunguyun

Nunauyuq	Atia	Timiuyuq	Upluani Uqaqatigiyaungmata
Ikaluktutiak	Rose Maksagak	Ekaluktutiak HTO	2025-03-01

Angiuttauvaktunik

Naunaiqlugu nunanga talvani havauhikhaq ittuq:

Kitikmeot

Angiuttauvaktunik

Munariniqmut Ayuittiaqtuq	Angirutinga Qanurittuq	Tadja Qanurittaakhaanik	Ublua Tuniyauyuq/Uuktuqtuq	Umikvikhaa Ublua
Iqalukhiurniqmut Tariuqmilu Kaanata	Licence to collect for Public Display purposes	Applied, Decision Pending		

Project transportation types

Transportation Type	Qanuq Atuqtauniarmangaa	Length of Use
Water	rented boat	

Project accomodation types

Alaanut,

Ihuaqutivaluin Atuqtauyukhan

Hanalrutit atuqtaunahuat (ukuallu ikuutat, pampiutainnik, tingmitinik, akhaluutinik, hunaluuniit)

Hanalrutit Qanurittuq	Qaffiuyut	Aktikkulaanga – Qanurittullu	Qanuq Atuqtauniarmangaa
truck	1	1	transport
Boat	1	1	dive support
SCUBA Tanks	4	1	diving

Qanurittuq Urhuqyuaq unalu Qayangnaqtut Hunavaluit Aturninnga

Qanurittuq urhuqyuaq hunavaluit aturninnga:	Urhuqyuaq Qanurittuq	Qaffiuyut qattaryut	Qattaryuk Aktikkulaanga	Atauttimut Qaffiuyut	Ilanga	Qanuq Atuqtauniarmangaa
Gasoline	fuel	1	100	100	Liters	vehicle

Imaqmik Aturninnga

Ubluq qanuraaluk (m3)	Aturumayain imavaluin utiqittagani qanuq	Atulirumayain imavaluin utiqittagani humi
0	municipal	municipal

Iqqakuq

Ikkakunik Munakgiyauyunik

Havauhikhaq Hulilukaarut	Qanurittuq Iqqakut	Ihumagiyauyuq Qanuraaluktut Atuqtait	Qanuq Iqqakuurniarmangaa	Halummaqtirarnirutikhan piyutin
Information is not available				

Avatiliriniqmut Ayurhauingit:

There are no existing environmental impacts and virtually none are anticipated by our collecting activities. The wet weight of marine life we intend to collect is a mere 5 kg, by diving only. 22 species and 135 live specimens. Specimens will be kept in self contained standard large camping coolers as we have practised from time to time since 1989. Specimen densities in coolers will be very low. Temperature control will be via locally purchased ice. Gas exchange and water movements will take place via D-cell battery operated air pumps. Water quality will be maintained via frequent water changes and the use of water quality test kits.

Additional Information

SECTION A1: Project Info

SECTION A2: Allweather Road

SECTION A3: Winter Road

SECTION B1: Project Info

SECTION B2: Exploration Activity

SECTION B3: Geosciences

SECTION B4: Drilling

SECTION B5: Stripping

SECTION B6: Underground Activity

SECTION B7: Waste Rock

SECTION B8: Stockpiles

SECTION B9: Mine Development

SECTION B10: Geology

SECTION B11: Mine

SECTION B12: Mill

SECTION C1: Pits

SECTION D1: Facility

SECTION D2: Facility Construction

SECTION D3: Facility Operation

SECTION D4: Vessel Use

SECTION E1: Offshore Survey

SECTION E2: Nearshore Survey

SECTION E3: Vessel Use

SECTION F1: Site Cleanup

SECTION G1: Well Authorization

SECTION G2: Onland Exploration

SECTION G3: Offshore Exploration

SECTION G4: Rig

SECTION H1: Vessel Use

SECTION H2: Disposal At Sea

SECTION I1: Municipal Development

Qanurittuq Ittunik Avatinga: Avatingalluanga

Qanurittuq Ittunik Avatinga: Inuuhimayunut Avatinga

Qanurittuq Ittunik Avatinga: Inungit-maniliurutingit Avatinga

Miscellaneous Project Information

This is the proponents Web page link <https://www.tokyo-zoo.net/kasai/index.html> We have clarified last year that no NU export permit is required. We clarified last year with CFIA that no inspections are required. No cites species will be collected. DFO Iqaluit confirmed this last year. NRI has confirmed that no research licence is required. CRA has confirmed no Canadian Export Licence is required. What type of boat will be rented for these activities? Will the boat be rented from the Hunters and Trappers Organization or from a community member? Shore Diving only for collecting purposes are planned. However, if a boat is needed and available we will use an EHTA vessel. This was discussed with the EHTO during a 55 min zoom collected meeting a few days ago. What accommodations will be used? Hotels in Cambridge Bay? Will staff be buying supplies from the community (e.g., groceries, equipment) for the activities? Foods and sundry supplies will be purchased from Cambridge Bay Community stores. We intend to book our stay at a locally owned Hotel and eat our meals there.

Naunaiyainiq ukuninnga Ayurhautingit unalu Piumayaat Ikiikliyuumiutinahuarutit

Tamatkiumayunik Ihuikgutivaktunik

Our activities will foster an improved appreciation of arctic marine environments and marine life in Cambridge Bay and abroad. Our information will be shared with EHTO

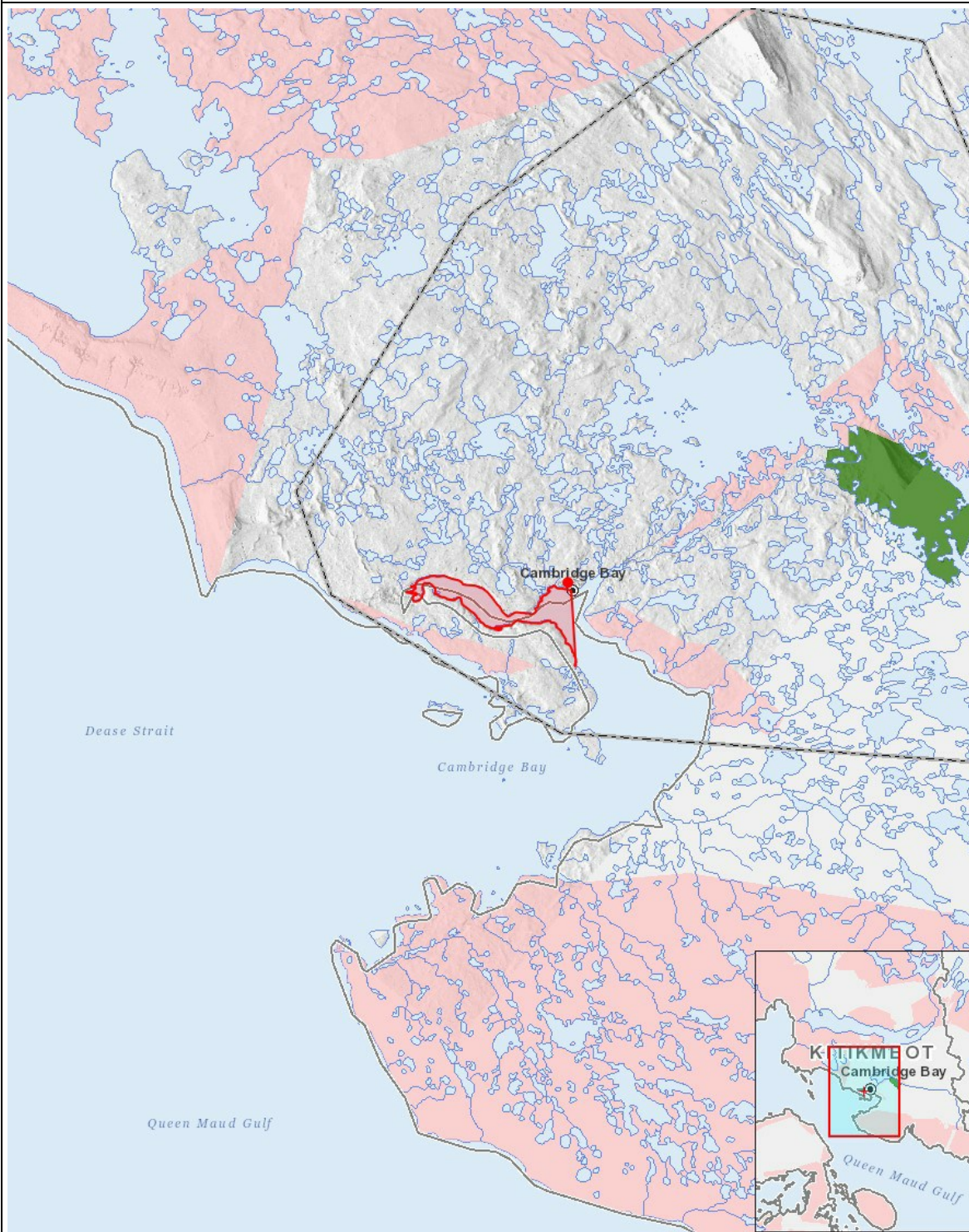
Impacts

Ilitariyauniq Avatiliriniqmut Ayurhauingit

	PHYSICAL	Designated environmental areas	Ground stability	Permafrost	Hydrology / Limnology	Water quality	Climate conditions	Eskers and other unique or fragile landscapes	Surface and bedrock geology	Sediment and soil quality	Tidal processes and bathymetry	Air quality	Noise levels	BIOLOGICAL	Vegetation	Wildlife, including habitat and migration patterns	Birds, including habitat and migration patterns	Aquatic species, incl. habitat and migration/spawning	Wildlife protected areas	SOCIO-ECONOMIC	Archaeological and cultural historic sites	Employment	Community wellness	Community infrastructure	Human health
Havakvinga																									
-	-	-	-	-	-	-	-	-	-	-	-	-	-	-	-	-	-	-	-	-	-	-	-	-	-
Aulapkaininnga																									
Sampling sites	-	-	-	-	P	-	-	-	-	-	-	-	-	-	P	-	P	-	-	-	P	P	-	-	P
Piiqtauniq																									
-	-	-	-	-	-	-	-	-	-	-	-	-	-	-	-	-	-	-	-	-	-	-	-	-	-

(P = Nakuuyuq, N = Nakuungittut unalu mikhilimaittuq, M = Nakuungittut unalu mikhittaaqtuq, U = Naluyauyuq)

Havaariyuyukhamut Nayugaa



List of Project Geometries

- | | |
|-----------|---|
| 1 polygon | *approximate* collection area from a depth of 0 to 30 metres, MARINE WATERS ONLY |
| 2 point | collection within a radius of < 7,000 m from 69.1167 degrees N, -105.0594 degrees W, MARINE WATERS ONLY |