

Activités

Emplacement	Type d'activité	Statut des terres	Historique du site	Site à valeur archéologique ou paléontologique	Proximité des collectivités les plus proches et de toute zone protégée
New project geometry	Other	Inuit Owned Surface Lands	50% annual overland haul route, 50% new route	N/A	Baker Lake
New project geometry	Other	Crown	50% annual overland haul route, 50% new route	N/A	Baker Lake

Engagement de la collectivité et avantages pour la région

Collectivité	Nom	Organisme	Date de la prise de contact
Baker Lake	Avaala Family	Local Family knowledgeable of the Pelly/Gary Lake area	2025-05-15

Autorisations

Indiquez les zones dans lesquelles le projet est situé:

Kivalliq

Autorisations

Organisme de régulation	Description des autorisations	État actuel	Date de l'émission/de la demande	Date d'échéance
Kivalliq Inuit Association	KVRW98F146	Active	2025-06-19	2027-06-18
Nunavut Planning Commission	NPC 150897	Applied, Decision Pending	2025-08-15	
Crown-Indigenous Relations and Northern Affairs Canada	Application pending	Applied, Decision Pending	2025-08-20	2026-08-20

Project transportation types

Transportation Type	Utilisation proposée	Length of Use
Land	CAT Challenger	

Project accomodation types

Temporary Camp

Autre,

Utilisation de matériel

Équipement à utiliser (y compris les perceuses, les pompes, les aéronefs, les véhicules, etc.)

Type d'équipement	Quantité	Taille – Dimensions	Utilisation proposée
CAT Challenger	4	120X232X15,000KGS128X	Tow steel sleighs containing materials over winter trail
Ice Profiler	1	30L X 20W X 16H	Determine thickness of ice on lakes on ponds to ensure thickness for CAT train
Eskimo Ice Auger	1	10	Drill holes in ice to determine ice thickness for CAT train
5000 watt generator	1	150lb	Provide electricity to temporary camp

Décrivez l'utilisation du carburant et des marchandises dangereuses

Décrivez l'utilisation de carburant :	Type de carburant	Nombre de conteneurs	Capacité du conteneur	Quantité totale	Unités	Utilisation proposée
Diesel	fuel	2	10000	20000	Liters	Equipment fuel burn

Consommation d'eau

Quantité quotidienne (m3)	Méthodes de récupération de l'eau proposées	Emplacement de récupération de l'eau proposé
0		

Déchets

Gestion des déchets

Activités du projet	Type des déchets	Quantité prévue	Méthode d'élimination	Procédures de traitement supplémentaires
Other	Other, Garbage from daily meals	10 bags	Return to Baker Lake for disposal at garbage dump	Garbage dump
Other	Eaux usées (matières de vidange)	10 gallons	Return to Baker Lake for disposal at sewage lagoon	Sewage lagoon

Répercussions environnementales :

Considering the duration, extent, magnitude, frequency, and reversibility of each potential effect that may occur as a result of temporary winter trail activities, and the mitigation measures available, there are no significant negative impacts for vegetation and wildlife interactions, and aquatic ecosystems anticipated and there are no residual negative effects anticipated. The Project's temporary winter access trail is not expected to have significant negative effects on vegetation and aquatic habitats because it is scheduled for construction and usage during frozen conditions where snow and ice will protect vegetation and water bodies from heavy equipment contact. The extent of anticipated vegetation biomass and soil loss or alteration along the trail as a result of Project remediation activities is expected to be extremely small in relation to the habitat available in the surrounding area. Mitigation measures will include: - Winter trail advanced scouting by snowmobile to assess wildlife habitat interactions and avoidance including minor route modifications to avoid any den sites, etc. - Once established transit will be limited to the same round to minimize the footprint of the trail. - Winter trail preparation by packing of snow and build up of ramps with proper grades to ensure equipment track separation from bare ground. - Ice thickness assessment and monitoring and re-enforcement where needed to ensure safe transit across frozen water bodies. - Transport of minimal fuel supply for each journey. The project has a detailed spill response plan and fuel management plan. Environmental protection supplies include Extensive spill response supplies, including absorbent pads, booms and socks, insta berms and overpack barrels or drums to contain impacted snow and spent absorbent materials, and operation by trained personnel.

Additional Information

SECTION A1: Project Info

PEL is to construct a temporary winter trail from Baker Lake to the Pelly Lake remediation site in order to haul all the waste out of the site, back to Baker Lake. It will then be placed onto sealift for transport and disposal out of the territory. Winter trail is deemed the most effective and low impact approach to transport the waste including several pieces of heavy equipment (D4 dozer, old jeep, two wobble wheel carts), 660 drums and fifty 1000 gal fuel tanks off the site.

SECTION A2: Allweather Road

None being used.

SECTION A3: Winter Road

SECTION B1: Project Info

SECTION B2: Exploration Activity

SECTION B3: Geosciences

SECTION B4: Drilling

SECTION B5: Stripping

SECTION B6: Underground Activity

SECTION B7: Waste Rock

SECTION B8: Stockpiles

SECTION B9: Mine Development

SECTION B10: Geology

SECTION B11: Mine

SECTION B12: Mill

SECTION C1: Pits

SECTION D1: Facility

SECTION D2: Facility Construction

SECTION D3: Facility Operation

SECTION D4: Vessel Use

SECTION E1: Offshore Survey

SECTION E2: Nearshore Survey

SECTION E3: Vessel Use

SECTION F1: Site Cleanup

SECTION G1: Well Authorization

SECTION G2: Onland Exploration

SECTION G3: Offshore Exploration

SECTION G4: Rig

SECTION H1: Vessel Use

SECTION H2: Disposal At Sea

SECTION I1: Municipal Development

Description de l'environnement existant : Environnement physique

Overland CAT train travels on frozen terrain, snow and ice. The site PEL will travel to is located within a zone of continuous permafrost (90% - 100% of this zone is underlain by permafrost)

Description de l'environnement existant : Environnement biologique

Overland CAT train travels on frozen terrain, snow and ice. The trail may contain many characteristic Arctic tundra mammal and bird species including barren-ground caribou (*Rangifer tarandus groenlandicus*), muskox (*Ovibos moschatus*), grizzly bear (*Ursus arctos horribilis*), Arctic fox (*Vulpes lagopus*), Arctic wolf (*Canis lupus arctos*), wolverine (*Gulo gulo*), ermine (*Mustela erminea*), Arctic hare (*Lepus arcticus*), Arctic ground squirrel (*Spermophilus parryii*), brown lemming (*Lemmus sibiricus*), gyrfalcon (*Falco rusticolus*), snow geese (*Chen caerulescens*), Canada goose (*Branta canadensis*), willow ptarmigan (*Lagopus lagopus*) and rock ptarmigan (*Lagopus mutus*), are likely to inhabit the Site and surrounding area. Wildlife species observed during the August 2022 Site visit included barren-ground caribou, Arctic hare, Arctic ground squirrel, brown lemming, Canada goose (*Branta canadensis*), and ptarmigan species. Other evidence of wildlife (bones or tracks) observed during the August 2022 Site visit included Arctic wolf, barren-ground caribou muskox and a bear species (most likely grizzly bear).

Description de l'environnement existant : Environnement socio-économique

PEL overland haul staff is 100% Inuit, contributing to local Inuit economy.

Miscellaneous Project Information

Peter's Expediting Ltd has a Right of Way with the Kivalliq Inuit Association, KVRW98F146

Identification des répercussions et mesures d'atténuation proposées

Considering the duration, extent, magnitude, frequency, and reversibility of each potential effect that may

occur as a result of temporary winter trail activities, and the mitigation measures available, there are no significant negative impacts for vegetation and wildlife interactions, and aquatic ecosystems anticipated and there are no residual negative effects anticipated. PELs temporary winter access trail is not expected to have significant negative effects on vegetation and aquatic habitats because it is scheduled for construction and usage during frozen conditions where snow and ice will protect vegetation and water bodies from heavy equipment contact. The extent of anticipated vegetation biomass and soil loss or alteration along the trail as a result of Project remediation activities is expected to be extremely small in relation to the habitat available in the surrounding area. Mitigation measures will include:-Winter trail advanced scouting by snowmobile to assess wildlife habitat interactions and avoidance including minor route modifications to avoid any den sites, etc. -Once established transit will be limited to the same round to minimize the footprint of the trail.-Winter trail preparation by packing of snow and build up of ramps with proper grades to ensure equipment track separation from bare ground.-Ice thickness assessment and monitoring and re-enforcement where needed to ensure safe transit across frozen water bodies.-Transport of minimal fuel supply for each journey. PEL has a detailed spill response plan and fuel management plan. Environmental protection supplies include Extensive spill response supplies, including absorbent pads, booms and socks, insta berms and overpack barrels or drums to contain impacted snow and spent absorbent materials, and operation by trained personnel.

Répercussions cumulatives

This project involves the removal of all impacted sediment and debris on Site. The overall goal is to enhance the quality of habitats and wildlife and to remove human health and ecological health risks at the Site. Due to the distance of this site from the nearest community of Baker Lake (350 km) using a winter trailer to haul all the waste and debris out was deemed to most effective and low impact options to overall clean-up of the site.

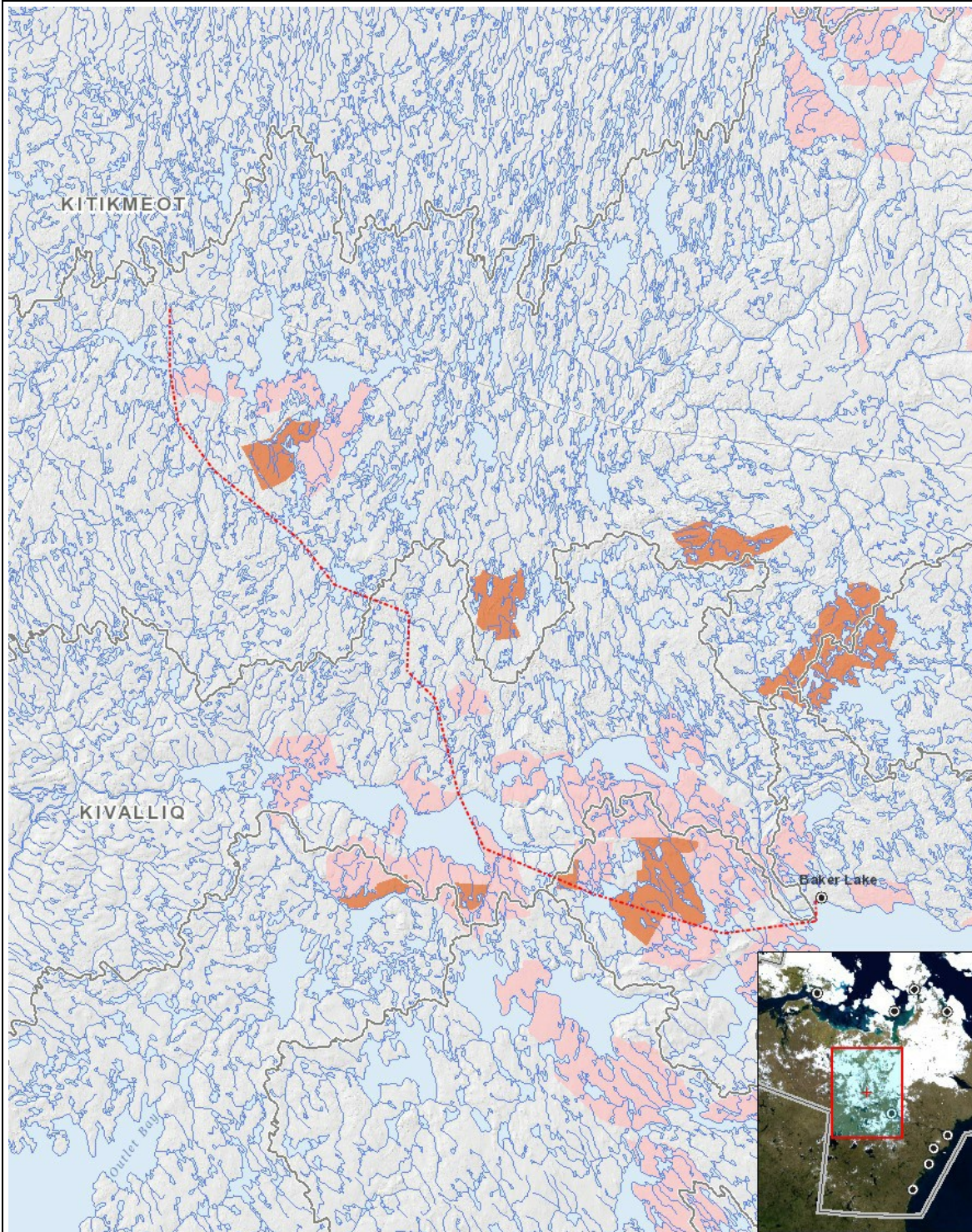
Impacts

Identification des répercussions environnementales

	PHYSICAL	Designated environmental areas	Ground stability	Permafrost	Hydrology / Limnology	Water quality	Climate conditions	Eskers and other unique or fragile landscapes	Surface and bedrock geology	Sediment and soil quality	Tidal processes and bathymetry	Air quality	Noise levels	BIOLOGICAL	Vegetation	Wildlife, including habitat and migration patterns	Birds, including habitat and migration patterns	Aquatic species, incl. habitat and migration/spawning	Wildlife protected areas	SOCIO-ECONOMIC	Archaeological and cultural historic sites	Employment	Community wellness	Community infrastructure	Human health
Construction	-	-	-	-	-	-	-	-	-	-	-	-	-	-	-	-	-	-	-	-	-	-	-	-	-
Exploitation																									
Other		-	-	-	-	-	-	-	-	-	-	-	-		-	-	-	-	-		P	P	-	P	
Désaffectation	-	-	-	-	-	-	-	-	-	-	-	-	-		-	-	-	-	-		-	-	-	-	-

(P = Positive, N = Négative et non gérable, M = Négative et gérable, U = Inconnue)

Site du projet



Liste des géométries de projet

1	polyline	New project geometry
2	polyline	New project geometry