

The Aston Bay Property, also known as the Storm Project, is located on northern Somerset Island, in the Qikiqtani Region of Nunavut. The nearest community to the Property is Resolute Bay, located 112 km to the north, across Parry Sound on the southern edge of Cornwallis Island.

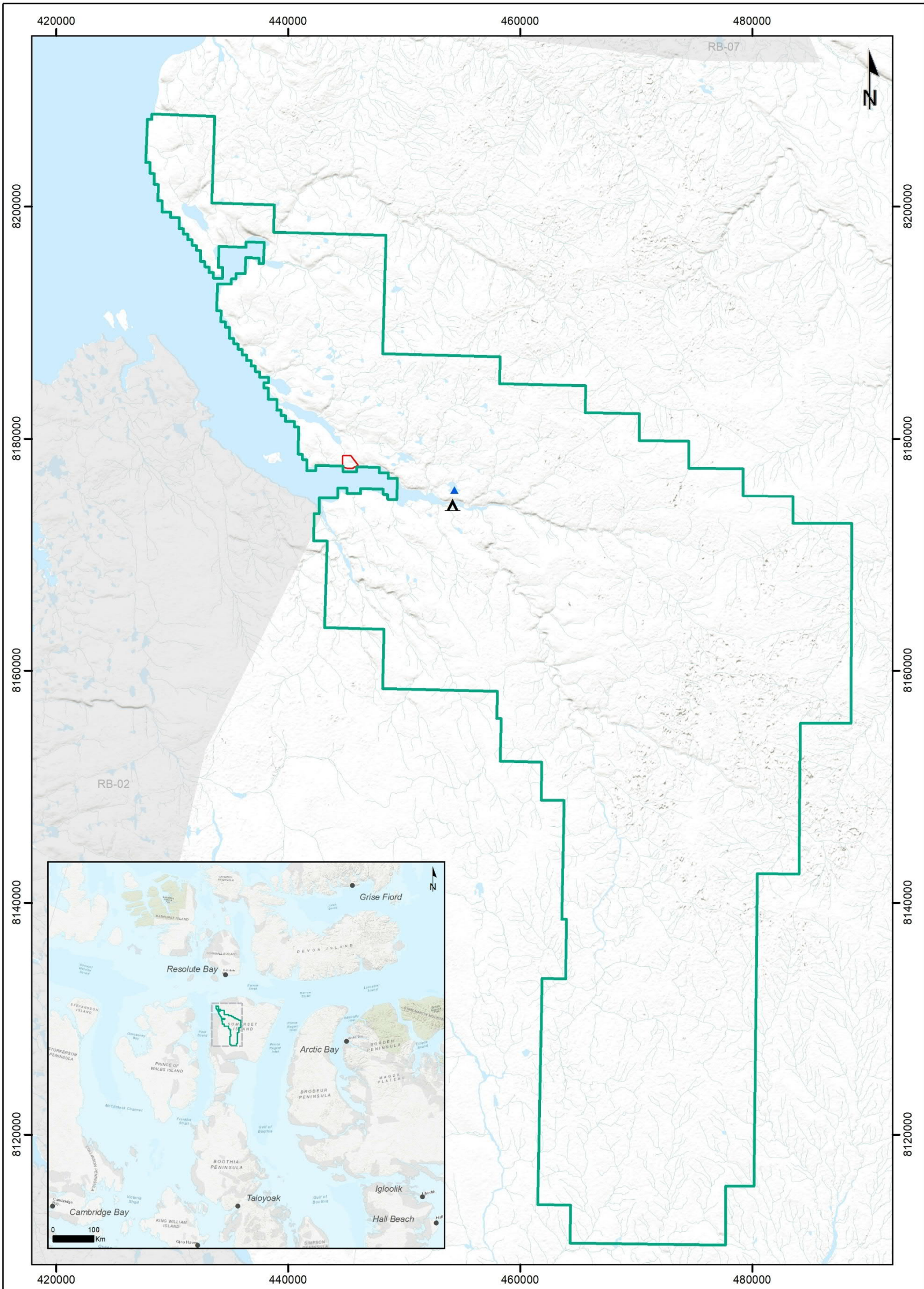
Aston Bay Holdings Ltd. is currently applying to renew and amend Nunavut Water Board Water Licence 2BE-STO2025 and CIRNAC Land Use Permit N2021C0004 in order to continue exploration activities at the Project.

The following activities are currently approved and will continue:

- Annual field programs running June through September,
- General exploration activities, including geological mapping, prospecting, geochemical sampling (rock, soil, till), airborne and ground geophysical surveys, environmental baseline studies and drilling on the project mineral tenure on Crown land within Project Extents,
- Transportation of personnel, materials, equipment and fuel to the Project via fixed wing aircraft equipped with tundra tires,
- Drill moves and daily transportation of personnel from the camp to the exploration and drillsites within the project area via helicopter,
- Activities supported out of the Storm Camp, with water drawn from the Aston River,
- Water use of 299 m³/day (10 m³/day for camp use and 289 m³/day for drilling).
- Small (< 4,000 L) temporary remote fuel caches to support exploration,
- Incineration of combustible solid waste and sewage, disposal of grey water from camp and drilling activities into excavated sumps or natural depressions and all other waste removed from site.

Aston Bay is asking permission for the following changes:

- Additional camp water source from the lake north of the Storm Camp during the spring, when the Aston River is frozen,
- Add structures to the 40-person Storm Camp to accommodate up to 65 people, with the new structures to be located within the existing camp boundaries,
- Increase fuel stored at the main Storm Camp fuel cache from 80,000 L (400 drums) to 148,625 L (725 drums).
- Increase chemicals and materials required for camp and exploration activities,
- Additional equipment needed to facilitate camp and exploration, such as a reverse circulation drill, skid steer, and snowmobiles,
- A marine landing area to be used by a barge to unload the annual sealift and stage equipment, drilling materials and fuel prior to mobilization to camp via helicopter. Use of the annual sealift will significantly reduce the need for fixed-wing aircraft flights to the Project.



Legend

- Community
- ▲ Proposed Spring Water Source for Storm Camp
- ▲ Storm Camp
- Inuit Owned Land
- Proposed Marine Landing Area
- ▭ Aston Bay Project Outline

ASTON BAY

Storm Project, Somerset Island, Nunavut, Canada

Project Description

1:350,000 | UTM N83 Zone 15 | January 2026

