

ABANDONMENT and RESTORATION PLAN
6106 Resources Limited

Hook Lake Project,
Nunavut

Table of Contents

	Page
1. Preamble.....	3
2. Introduction.....	3
3. Schedule.....	3
4. Infrastructure.....	3
5. Seasonal Shutdown.....	4
6. Final Abandonment and Restoration.....	6
7. Project Maps.....	8
Figure 1 – General Location Map.....	8
Figure 2 – Detailed Location Map for Drilling Operations.....	9

1. Preamble

This Abandonment and Reclamation Plan (A & R Plan) is effective from the date of issuance of all water licenses and land use permits currently being applied for by 6101 Resources Limited's Hook Lake Project, site approximately 140 km northwest of Arviat, 179 km from Whale Cove and 219 km away from Rankin Inlet, Nunavut until the expiry of said licenses and permits.

The Abandonment and Reclamation Plan has been prepared for internal company use and will be distributed to KIA/NIRB/CIRNAC and the NWB for approval as part of 6106 Resource Limited's (the Company) Access to Inuit Owned Lands Land Use Permit, Crown Indigenous Resources and Northern Affairs Canada (CIRNAC), Land Use Permit and NWB Water License applications now and in the near future.

Copies and updates of this Plan may be obtained by writing to:

Eric Sondergaard
6106 Resources Limited
3139 Leduc Crescent S.W.
Calgary, AB T3E 5X1

eric@6106.com
(403) 809-4982

Company Representative (On-site):

Subject to change throughout program; Actual company representatives on-site have not been decided at this time but will be forwarded when known. Phone number for the 2026 base of operations will be provided as soon as satellite service is established at the Hook Lake Camp.

2. Introduction

This A&R plan has been prepared for a proposed ground geophysical and drilling program within south east Nunavut approximately 140 km northwest of Arviat near Hook Lake in the upcoming years.

3. Schedule

The final restoration of the drill sites will be completed by the time the program is fully completed and will be finished prior to the expiration of any land use permits and water licence unless renewals are applied for. As 6106 Resources Ltd. practices progressive reclamation such as filling drill sumps, cutting off drill collars to ground level and removing garbage, equipment and empty fuel drums as the program progresses, the final restoration effort will be minimal. Photographs will be taken prior to and following any in order to maintain a current record.

4. Infrastructure

Sleeper tents	4.3 x 4.9	9
First aid tents	4.3 x 4.9	1
Kitchen dining room	4.8 x 9.8	1
Men's Dry	4.8 x 9.8	1
Women's Dry	4,8 x 9.8	1
Office	4.3 x 4.9	1
Core Shack	4.3 x 9.8	1
Drill/Mud/Lubricants shack	4.3 x 4.9	1
Toilet Facilities	4.3 x 4.9	1
Generator Shack	3.7 x 4.9	1
Storage Shack	4.3 x 4.9	1
Pump Shack	4 x 4	1
Emergency shelter for drill	10 x 10	1-4

5. Seasonal Shutdown

a) Buildings and Contents

All canvas tents will be removed from the frames and stored in the Seacan for the winter. Wooden structures (generator shack, latrine and tent frames) and Weatherhaven style tents will be kept secured during winter months. All empty propane and fuel drums will be removed from site at the end of each season. Generators will be drained, serviced and stored for the winter.

b) Water System

Pumps and hoses will be drained and dismantled. Pumps will be removed from site for servicing and storage. Hoses will be stored in the washroom/laundry room or for the winter months.

c) Fuel Caches and Chemical Storage

An inventory of all fuel caches will be made prior to seasonal shutdown/camp demobilization at the end of each season as well as a thorough inspection of all full drums. Empty drums will be constantly backhauled to Arviat/Churchill during the course of the program.

Chemicals will be stored in the dry's within berms which are completely enclosed by plywood and secured over the winter months.

d) Waste

Combustible Waste: All combustible waste will be incinerated as the program progresses. All ash will be collected and disposed of in landfill site in Arviat (permission pending for all but metal and hazardous materials) or Churchill with authorization. The incinerator will be stored on site over the winter.

Non-combustible Waste: All non-combustible waste will be sent to Arviat/Churchill or Thompson via chartered aircraft to be disposed of by our contract expeditor. All carriers and receivers of this material will be informed of the need to register with the Government of Nunavut, Department of Environment as well as having the proper documentation in the form of a waste manifest.

Grey Water Sump: The sump will be inspected, marked and covered for the winter.

Black Water: Any latrine sump will be buried at the time of demobilization of the camp.

e) Drill Sites

The drill will be dismantled at the last drill collar and all equipment will be flown via helicopter to the Hook Lake camp for winter storage preparatory for future programs.

All drill sites will be inspected immediately upon completion of each drill hole. All waste will be collected and flown to camp for incineration or removal to an approved disposal location. All sumps will be backfilled and each drill collar will be cut off to ground level if the casing cannot be removed.

Photographs of each drill site will be taken at the completion of clean up at each site.

f) Contamination Clean Up

Any soil at the proposed camp or at the drill sites that has become contaminated will be treated as per the Fuel Spill Contingency Plan. All non-combustible waste will be sent to Arviat/Churchill via aircraft to be disposed of by our contract expeditor. All carriers and receivers of this material will be informed of the need to register with the Government of Nunavut, Department of Environment as well as having the proper documentation in the form of a waste manifest.

g) Inspection and Documentation

A complete inspection of all disturbed areas (drill sites, camp and fuel caches) will be conducted prior to seasonal closure of the project with a full inventory taken for each location. A photographic record will be kept of each work area and campsite before, during and after the project is complete.

6. Final Abandonment and Restoration

a) Buildings and Contents

All buildings and contents will be removed from the project operational sites.

b) Equipment

All equipment including generators and pumps will be removed from the project operational sites.

c) Fuel Caches and Chemical Storage

All fuel drums and chemical containers will be removed. All sites that contained cached fuel will be inspected and any contamination will be dealt with according to the Fuel Spill Contingency Plan. All debris will be removed. Final photos of fuel caches and storage sites will be supplied.

d) Sumps

All sumps will be inspected and backfilled. Final photos will be taken and supplied to the NWB, NIRB and KIA.

e) Camp Site

A final inspection of the camp site will be made to ensure no waste remains. Final photos will be taken and supplied to the NWB, NIRB and KIA.

f) Drill Sites

Following completion of the programs, the drill and all ancillary equipment will be flown off-site to Churchill via Twin Otter unless required for future years use. All drill sites will be inspected immediately upon completion of each drill hole. All waste will be collected and flown to camp for incineration or removal to an approved disposal location. All sumps will be backfilled and each drill collar will be cut off to ground level if the casing cannot be removed.

Photographs of each drill site will be taken at the completion of clean up at each site.

Photographs of each drill site will be taken at the completion of clean up at each site and supplied to the NWB, NIRB and KIA.

g) Contamination Clean Up

Any contamination will be treated as per the Fuel Spill Contingency Plan. Any contamination and subsequent clean-up will be documented with photographs. All non-combustible waste will be sent to Arviat/Churchill via chartered aircraft to be disposed of by our contract expeditor. All carriers and receivers of this material will be informed of the need to register with the Government of Nunavut, Department of Environment as well as having the proper documentation in the form of a waste manifest.

i) Inspection and Documentation

A complete inspection will be conducted of all areas prior to closure. Photographs will be taken to document the conditions of each site prior to final demobilization for use in the final plan/report. All appropriate agencies will be contacted once final clean-up is complete.

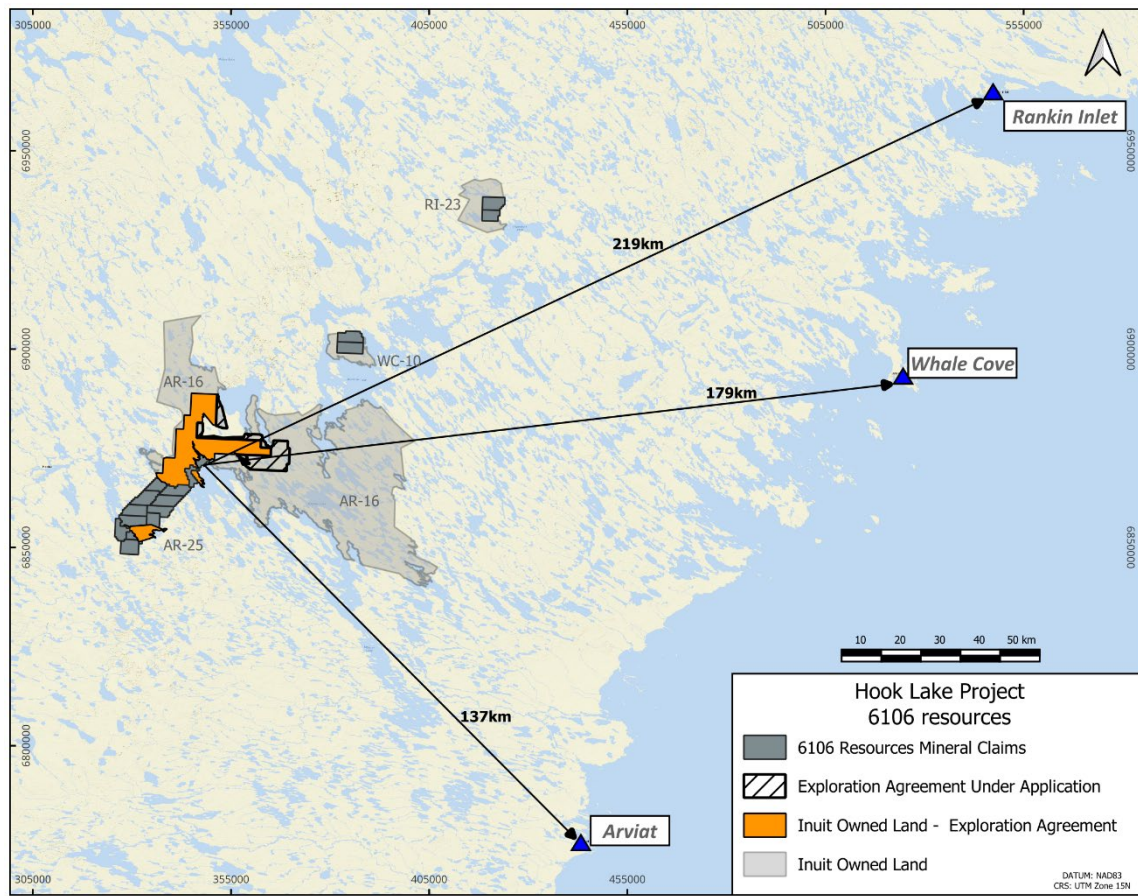


Figure 1 – General Location Map

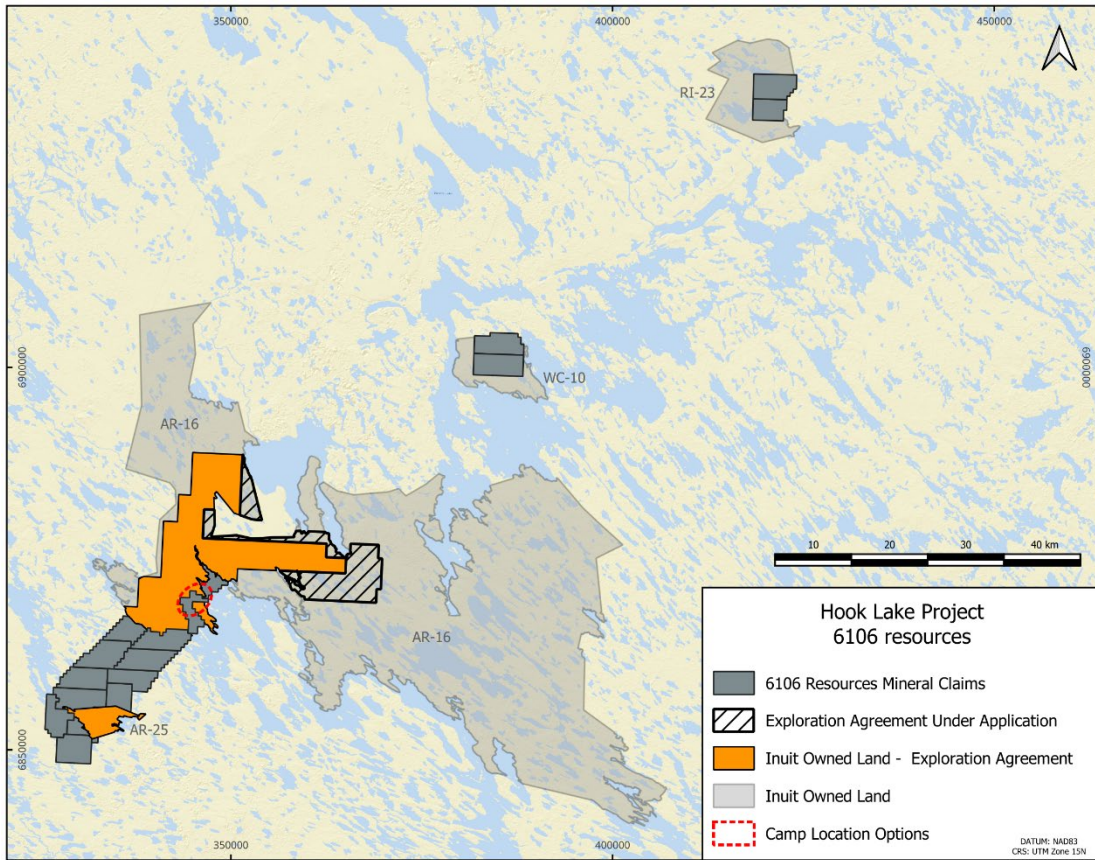


Figure 2 – Detailed Operational Location Map