





















# **Additional Information**

**SECTION A1: Project Info**

**SECTION A2: Allweather Road**

**SECTION A3: Winter Road**

**SECTION B1: Project Info**

**SECTION B2: Exploration Activity**

**SECTION B3: Geosciences**

**SECTION B4: Drilling**

**SECTION B5: Stripping**

**SECTION B6: Underground Activity**

**SECTION B7: Waste Rock**

**SECTION B8: Stockpiles**

**SECTION B9: Mine Development**

**SECTION B10: Geology**

**SECTION B11: Mine**

**SECTION B12: Mill**

**SECTION C1: Pits**

**SECTION D1: Facility**

**SECTION D2: Facility Construction**

**SECTION D3: Facility Operation**

**SECTION D4: Vessel Use**

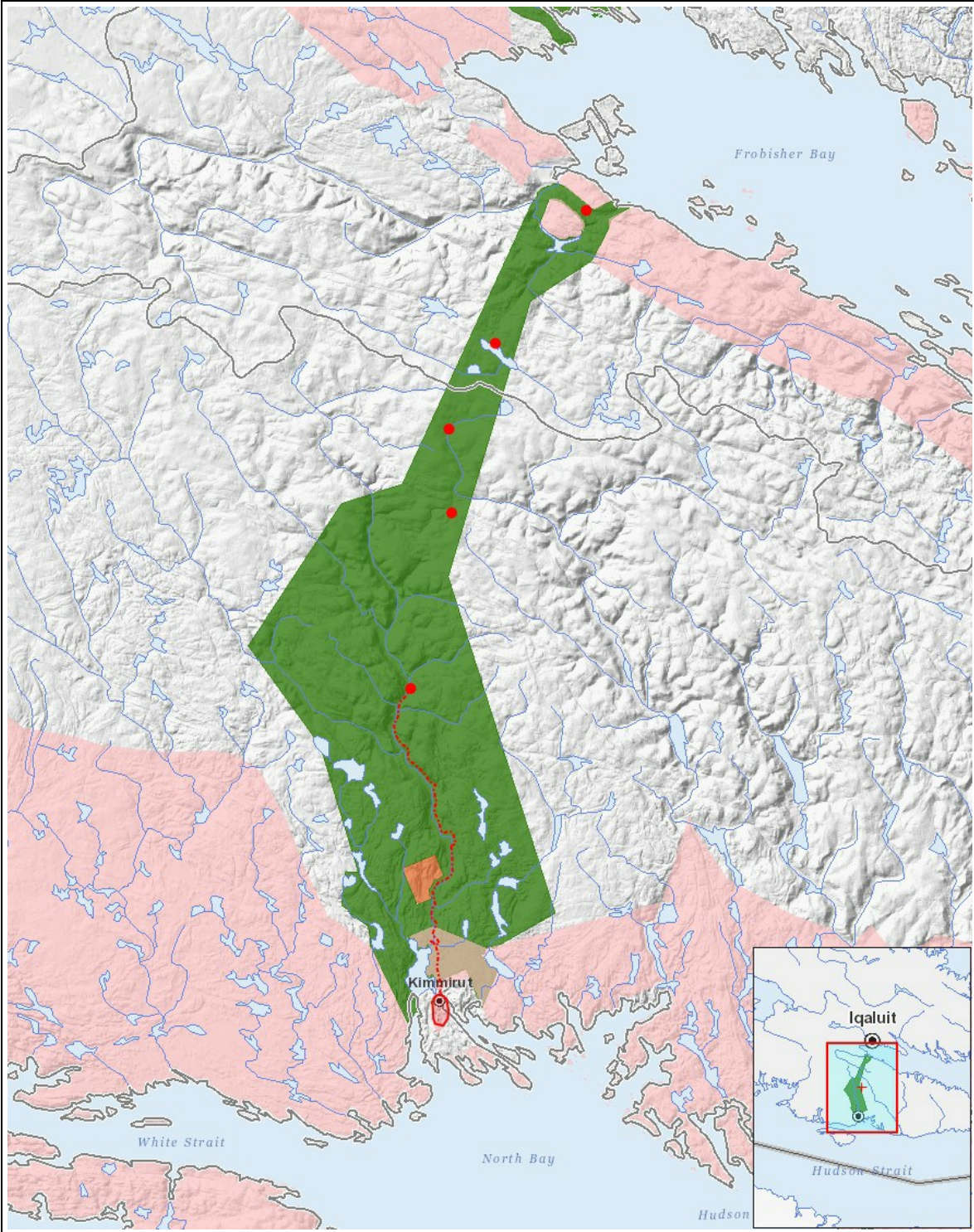
**SECTION E1: Offshore Survey**

**SECTION E2: Nearshore Survey**

**SECTION E3: Vessel Use**







List of Project Geometries

1	polygon	municipality of Kimmirut, NU June 29-July 13
2	polyline	hike to shelter #9 July 14
3	polyline	hike from #9 to shelter #8 July 15
4	polyline	hike from #8 to shelter #7 July 16
5	point	bedrock mapping near shelter #7 July 17
6	point	bedrock mapping near shelter #5 July 18
7	point	bedrock mapping near shelter #4 July 18
8	point	bedrock mapping near shelter #3 July 18
9	point	bedrock mapping near shelter #1 trailhead July 18