



NIRB Application for Screening #126326

Whale Cove Permanent Project Camp Expansion

Application Type: Amendment

Project Type: Camp

Application Date: Tuesday, January 6, 2026

Period of operation: from 2027-09-15 to 2037-09-15

Project Proponent: Brian May
Whale Cove Gold Corp
40 Temperance Street, Bay Adelaide Centre, North Tower, Suite 3200
Toronto Ontario M5H 0B4
Canada
Phone Number:: 2369702089, Fax Number::

DETAILS

Non-technical project proposal description

English: The Whale Cove Project ("Project"; previously known as the Pistol Bay Project) is found near the Hamlet of Whale Cove in the Kivalliq Region of Nunavut on the west side of Hudson Bay. The claim group covering the project area extends from its eastern boundary approximately 14 km northwest of Whale Cove for 85 km to the west-northwest. The project is owned by Whale Cove Gold Corp. ("WCGC"), a wholly owned (indirect) subsidiary of BG Gold Capital II Corp. ("BG Gold"). WCGC was previously named Northquest Ltd. ("Northquest"). Northquest began exploring on the property in 2011. The property had previously been explored by several companies, including a subsidiary of Inco Ltd. In 2016, Northquest was acquired by Nord Gold Plc. In late 2022, Northquest was acquired by a subsidiary of BG Gold. In 2023, Northquest Ltd. and the Pistol Bay Project were renamed Whale Cove Gold Corp. and the Whale Cove Project, respectively. Today, the Whale Cove Project is an exploration project that has several gold prospects (many of which have been drilled), including the Vickers Deposit. The Vickers deposit is the most advanced prospect with a NI 43-101 compliant report that has estimated measured, indicated and inferred resources of gold. It has the potential to be economically viable at current gold prices. Economic studies to examine the viability of the project will be progressed in the coming years, along with further drilling, baseline, hydrogeological and other work. Following an NPC conformity determination (NPC File No.: 149612) and NIRB File 11EN027 on January 24, 2022 (Screening Decision Report File No.21CN042), WCGC has completed: •Archaeological surveys at the permanent camp location, •Began site preparation for the permanent camp (35-person), and •Continued exploration activities and drilling on the Whale Cove Property. Project Description To further improve advanced exploration efficiency BG Gold are proposing to: •Increase the permanent camp capacity to a 100-person camp, and •As needed, operate a 20-person mobile camp on the Whale Cove Project Property. WCGC will renew the Type B water license 2BE-PBP2025, leases and land use permits to reflect the camp expansion. •Increase the number of drills onsite and associated equipment.

French: Le projet Whale Cove (« Projet »; anciennement connu sous le nom de projet Pistol Bay) est situé près du hameau de Whale Cove, dans la région de Kivalliq au Nunavut, sur la côte ouest de la baie d'Hudson. Le groupe de claims couvrant la zone du projet s'étend de sa limite est, située à environ 14 km au nord-ouest de Whale Cove, sur une distance de 85 km vers l'ouest-nord-ouest. Le projet appartient à Whale Cove Gold Corp. (« WCGC »), une filiale entièrement détenue (indirectement) de BG Gold Capital II Corp. (« BG Gold »). WCGC portait auparavant le nom de Northquest Ltd. (« Northquest »). Northquest a commencé les travaux d'exploration sur la propriété en 2011. La propriété avait déjà fait l'objet de travaux d'exploration par plusieurs sociétés, dont une filiale d'Inco Ltd. En 2016, Northquest a été acquise par Nord Gold Plc. À la fin de 2022, Northquest a été acquise par une filiale de BG Gold. En 2023, Northquest Ltd. et le projet Pistol Bay ont été renommés Whale Cove Gold Corp. et le projet Whale Cove, respectivement. Aujourd'hui, le projet Whale Cove est un projet d'exploration comprenant plusieurs prospectifs aurifères (dont plusieurs ont fait l'objet de forages), y compris le gisement Vickers. Le gisement Vickers est le prospectif le plus avancé et fait l'objet d'un rapport conforme à la norme NI 43-101, avec des ressources aurifères estimées dans les catégories mesurées, indiquées et présumées. Il présente un potentiel de viabilité économique aux prix actuels de l'or. Des études économiques visant à évaluer la viabilité du projet seront réalisées dans les prochaines années, en parallèle avec des travaux de forage supplémentaires ainsi que des études de référence environnementales, hydrogéologiques et autres. À la suite d'une détermination de conformité de la CNPN (dossier no 149612) et de la décision de présélection de l'OÉE du Nunavut (dossier 11EN027, rapport de décision de présélection no 21CN042) datée du 24 janvier 2022, WCGC a réalisé les activités suivantes : des levés archéologiques à l'emplacement du camp permanent ; le début des travaux de préparation du site pour le camp permanent (35 personnes) ; la poursuite des activités d'exploration et de forage sur la propriété de Whale Cove. Description du projet Afin d'améliorer l'efficacité des activités d'exploration avancée, BG Gold propose de : augmenter la capacité du camp permanent à 100 personnes ; exploiter, au besoin, un camp mobile de 20 personnes sur la propriété du projet Whale Cove. WCGC renouvellera le permis d'utilisation de l'eau de type B 2BE-PBP2025, ainsi que les baux et permis d'utilisation des terres, afin de refléter l'agrandissement du camp. Augmenter le nombre de foreuses sur le site ainsi que l'équipement connexe.

Inuktitut: Δ'L ʙ Δ' ɔΓ, Whale Cove <Δ' ɔΓ ʙ> (Δ' ɔΓ) ʙ Pistol Bay <Δ' ɔΓ ʙ> Δ' ʙ ʙ ʙ Whale Cove

Activities

Location	Activity Type	Land Status	Site history	Site archaeological or paleontological value	Proximity to the nearest communities and any protected areas
New Camp	Camp	Commissioners	Whale Cove Gold Corp is proposing and has the authorization of Whale Cove, to move the temporary camp to a more suitable location closer to the Hamlet	Archaeological assessment was conducted by Golder in October 2021	The location was chosen in consultation with the Hamlet and the IssatikHTO. After considering several different options for a new camp site, a new site was chosen approximately 4.2km west of the current site. The new site is 300-400m northwest of and downslope from an old, abandoned trailer near the main road, approximately 22km from town. Water will be drawn from the fish-bearing lake approximately 550m northwest from the old, abandoned trailer.
Whale Cove Property	Aerial surveys	Crown	The Whale Cove Property is located in the vicinity of Whale Cove, Nunavut. The area has been used historically for traditional land use activities by Inuit, including travel and harvesting. Limited mineral exploration activities have occurred in the broader region in the past. No permanent infrastructure is currently	Potential archaeological or cultural features were documented by a geologist during field activities. These observations were made by a non-archaeologist and do not constitute a formal assessment. The features have not been reviewed by a qualified archaeologist. Any discoveries will result in	The southern boundary of the property is located 9km from the Hamlet of Whale Cove. The NW boundary of the property is located 92 km from the Hamlet of Whale Cove.

			present on the Property, and no active development is ongoing at this time.	work stoppage and notification.	
WC-01	Aerial surveys	Inuit Owned Surface Lands	WC-01 is located in the vicinity of Whale Cove, Nunavut. The area is understood to have been historically used for traditional Inuit land use, including travel and harvesting. Limited mineral exploration activities may have occurred in the broader region; however, no detailed records of past activities specific to WC-01 are available. No permanent infrastructure is known to be present, and the site is currently undeveloped.	Potential archaeological or cultural features were documented by a geologist during field activities. These observations were made by a non-archaeologist and do not constitute a formal assessment. The features have not been reviewed by a qualified archaeologist. Any discoveries will result in work stoppage and notification.	WC-01 is located approximately 62 km NW of the Hamlet of Whale Cove
WC-01	Mineral Exploration	Inuit Owned Surface Lands	WC-01 is located in the vicinity of Whale Cove, Nunavut. The area is understood to have been historically used for traditional Inuit land use, including travel and harvesting. Limited mineral exploration activities may have occurred in the broader region; however, no detailed records of past activities specific to WC-01 are available. No permanent	Potential archaeological or cultural features were documented by a geologist during field activities. These observations were made by a non-archaeologist and do not constitute a formal assessment. The features have not been reviewed by a qualified archaeologist. Any discoveries will result in work stoppage and notification.	WC-01 is located approximately 62 km NW of the Hamlet of Whale Cove

			infrastructure is known to be present, and the site is currently undeveloped.		
WC-02	Aerial surveys	Inuit Owned Sub-Surface Lands	WC-02 is located in the vicinity of Whale Cove, Nunavut. The area is understood to have been historically used for traditional Inuit land use, including travel and harvesting. Any past mineral exploration activity in the immediate area is limited or undocumented. No permanent infrastructure is known to be present, and the site is currently undeveloped.	No archaeological or paleontological studies or information reviews have been conducted for the Location. Any unexpected discoveries made during Project activities will be managed through immediate work stoppage and notification of the appropriate regulatory authorities in accordance with Nunavut requirements.	The western boundary of WC-02 is approximately 10 km NW of the community of Whale Cove. The southern boundary is <1 km from the previous settlement of Tavani and 30 km from Whale Cove. The NW boundary is 82km from Whale Cove.
WC-02	Mineral Exploration	Inuit Owned Sub-Surface Lands	WC-02 is located in the vicinity of Whale Cove, Nunavut. The area is understood to have been historically used for traditional Inuit land use, including travel and harvesting. Any past mineral exploration activity in the immediate area is limited or undocumented. No permanent infrastructure is known to be present, and the site is currently undeveloped.	No archaeological or paleontological studies or information reviews have been conducted for the Project area. Any unexpected discoveries made during Project activities will be managed through immediate work stoppage and notification of the appropriate regulatory authorities in accordance with Nunavut requirements.	The western boundary of WC-02 is approximately 10 km NW of the community of Whale Cove. The southern boundary is <1 km from the previous settlement of Tavani and 30 km from Whale Cove. The NW boundary is 82km from Whale Cove.
Whale Cove Property	Mineral Exploration	Crown	The Whale Cove Property is located in the vicinity of	Potential archaeological or cultural features were	The southern boundary of the property is located 9km from the

			<p>Whale Cove, Nunavut. The area has been used historically for traditional land use activities by Inuit, including travel and harvesting. Limited mineral exploration activities have occurred in the broader region in the past. No permanent infrastructure is currently present on the Property, and no active development is ongoing at this time.</p>	<p>documented by a geologist during field activities. These observations were made by a non-archaeologist and do not constitute a formal assessment. The features have not been reviewed by a qualified archaeologist. Any discoveries will result in work stoppage and notification.</p>	<p>Hamlet of Whale Cove. The NW boundary of the property is located 92 km from the Hamlet of Whale Cove.</p>
Whale Cove Municipal Boundary	Aerial surveys	Commissioners	<p>The Whale Cove Municipal Boundary is located in the vicinity of Whale Cove, Nunavut. The area has been used historically for traditional land use activities by Inuit, including travel and harvesting. Limited mineral exploration activities have occurred in the broader region in the past. No permanent infrastructure is currently present on the Property, and no active development is ongoing at this time.</p>	<p>Potential archaeological or cultural features were documented by a geologist during field activities. These observations were made by a non-archaeologist and do not constitute a formal assessment. The features have not been reviewed by a qualified archaeologist. Any discoveries will result in work stoppage and notification.</p>	<p>The Municipal Boundary lies within the boundaries of Whale Cove.</p>
Whale Cove Municipal Boundary	Mineral Exploration	Commissioners	<p>The Whale Cove Municipal Boundary is located in the vicinity of Whale Cove,</p>	<p>Potential archaeological or cultural features were documented by a geologist</p>	<p>The Municipal Boundary lies within the boundaries of Whale Cove.</p>

			<p>Nunavut. The area has been used historically for traditional land use activities by Inuit, including travel and harvesting. Limited mineral exploration activities have occurred in the broader region in the past. No permanent infrastructure is currently present on the Property, and no active development is ongoing at this time.</p>	<p>during field activities. These observations were made by a non-archaeologist and do not constitute a formal assessment. The features have not been reviewed by a qualified archaeologist. Any discoveries will result in work stoppage and notification.</p>	
Old camp	Site Cleanup/Remediation	Commissioners	<p>The camp facility associated with the project was constructed and occupied in June-July of 2013. Yearly seasonal exploration programs have been ongoing since, with the exception of a hiatus during COVID.</p>	<p>Potential archaeological or cultural features were documented by a geologist during field activities. These observations were made by a non-archaeologist and do not constitute a formal assessment. The features have not been reviewed by a qualified archaeologist. Any discoveries will result in work stoppage and notification.</p>	<p>The Pistol Bay camp is 22 km to the NW of the Hamlet of Whale Cove</p>
Old camp	Camp	Commissioners	<p>The camp facility associated with the project was constructed and occupied in June-July of 2013. Yearly seasonal exploration programs have been ongoing</p>	<p>Potential archaeological or cultural features were documented by a geologist during field activities. These observations were made by a non-archaeologist</p>	<p>The Pistol Bay camp is 22 km to the NW of the Hamlet of Whale Cove</p>

			since, with the exception of a hiatus during COVID.	and do not constitute a formal assessment. The features have not been reviewed by a qualified archaeologist. Any discoveries will result in work stoppage and notification.	
--	--	--	---	---	--

Community Involvement & Regional Benefits

Community	Name	Organization	Date Contacted
Whale Cove	Brian Fleming	Hamlet of Whale Cove	2025-03-27
Rankin Inlet	Luis Manzo	Kivalliq Inuit Association	2025-01-20
Whale Cove	Brian Fleming	Hamlet of Whale Cove	2025-03-20
Rankin Inlet	Luis Manzo	Kivalliq Inuit Association	2023-06-30
Iqaluit	Premier PJ Akeeagok	Government of Nunavut	2025-01-20
Whale Cove	Mayor Oliver Shipton	Hamlet of Whale Cove	2025-05-07
Rankin Inlet	Luis Manzo	Kivalliq Inuit Association	2025-05-30
Rankin Inlet	Luis Manzo	Kivalliq Inuit Association	2025-06-06
Rankin Inlet	Luis Manzo	Kivalliq Inuit Association	2025-08-11
Whale Cove	Mayor Oliver Shipton	Hamlet of Whale Cove	2025-09-16
Rankin Inlet	Gabriel Karlik	Kivalliq Inuit Association	2005-09-17
Whale Cove	Mona Okalik	Issatik HTO	2025-10-01

Authorizations

Indicate the areas in which the project is located:

Transboundary
Kivalliq

Authorizations

Regulatory Authority	Authorization Description	Current Status	Date Issued / Applied	Expiry Date
Crown-Indigenous Relations and Northern Affairs Canada	Land Use Permit N0021C0005	Active	2021-07-07	2026-07-07
Government of Nunavut, Community and Government Services	Permission to Occupy	Active	2021-06-14	2026-08-31
Kivalliq Inuit Association	KVL325C02	Active		
Crown-Indigenous Relations and Northern Affairs Canada	amendment to N2021C0005 for camp move	Not Yet Applied		
Nunavut Water Board	amendment to 2BE PBP1520 for camp move	Not Yet Applied		
Nunavut Water Board	2BE PBP1520 is expired. Applying for a new permit after the NIRB process	Not Yet Applied		

Project transportation types

Transportation Type	Proposed Use	Length of Use
Air	transport of crew and goods via scheduled aircraft to Whale Cove airport. Heli supported drill activities from camp to drill sites	
Land	ATV and snowmobile use for transport of crew and goods to and from drills. Truck for transport of goods and crew from airport to camp, goods from Hamlet to camp	

Project accommodation types

Temporary Camp
Permanent Camp

Material Use

Equipment to be used (including drills, pumps, aircraft, vehicles, etc)

Equipment Type	Quantity	Size - Dimensions	Proposed Use
Side-by-side (UTV)	2	900 kg	Transportation
Snowmobile	4	220 kg	Transportation
Skid-steer	1	2900 kg	Movement of goods
CAT Wheel Loader	1	4000 kg	Movement of goods, snow clearing
CAT D4	1	13272 kg	Moving drills on ice, snow clearing
Ford F250 pick up truck	2	3200 kg	Transportation
Dodge Ram	1	3200 kg	Transportation
AStar B2 or B3	2	2250 kg	Drill moves / crew transport
Honda generators	2	100 kg	Power equipment in camp
Generator	2	33.1 Kva	Main power in camp and spare
Smart Ash portable incinerator	1	63 kg	Multipurpose batch load incinerator
Water pumps	2	50cc	Water for camp
Barrel Crusher	1	815 kg	Gas powered hydraulic barrel crusher
Kubota M606 tractor	1	2300 kg	Moving equipment and drill core boxes
Trailer (ST8214TDD)	1	700 kg	Sure-track trailer for moving equipment and provisions
Portable rock saw	1	20 kg	Channel cut outcrop in the field
Core saws (Vancon electric)	2	3 hp	Cutting drill core
Duralite DL 1000 diamond drill rig	2	4426 kg	Diamond Drilling
Exploration drill	2	15000 kg	drilling

Detail Fuel and Hazardous Material Use

Detail fuel material use:	Fuel Type	Number of containers	Container Capacity	Total Amount	Units	Proposed Use
Aviation fuel	fuel	50	205	10250	Liters	Helicopter
Gasoline	fuel	20	205	4100	Liters	Camp, vehicles
Propane	fuel	23	920	21160	Gallons	Camp
Diesel	fuel	20	205	4100	Liters	Camp and drill use
Used waste oil	hazardous	0	45	0	Gallons	burn in incinerator or backhaul

Water Consumption

Daily amount (m3)	Proposed water retrieval methods	Proposed water retrieval location
299	Water pump with hose and screen at the end to avoid fish entrapment	Fish Lake (nearby water source that does not freeze to the bottom in winter (map provided))

Waste

Waste Management

Project Activity	Type of Waste	Projected Amount Generated	Method of Disposal	Additional treatment procedures
Mineral Exploration	Combustible wastes	moderate	Combustible wastes will be incinerated	Ash from the incinerator will be stored in sealed 45-gallon drums and disposed of in an approved facility
Mineral Exploration	Greywater	≤ 10 (m ³ /day)	Greywater will be disposed of in a sump	The sumps located adjacent to camp; allowed to percolate into overburden; minimum distance of 31 m from nearby water sources
Mineral Exploration	Hazardous waste	minimal	Hazardous waste will be collected and stored separately in sealed 45-gallon drums	Hazardous waste will be transported to an approved facility for proper disposal.
Mineral Exploration	Non-Combustible wastes	minimal	non-combustible waste will be collected	non combustible waste will be removed to the Whale Cove landfill for disposal
Mineral Exploration	Sewage (human waste)	100 persons	Pacto Toilets	Sewage from the Pacto toilets will be incinerated daily. Ash from the incinerators will be stored in sealed 45-gallon drums and disposed of in an approved landfill.

Environmental Impacts:

The proposed project involves the relocation of an existing temporary exploration camp from the Pistol Bay Camp location to the Vickers Camp location on the Whale Cove Property. No new exploration activities are proposed as part of this application. Potential environmental impacts are limited to localized and temporary effects associated with camp installation, operation, and demobilization. With the implementation of standard mitigation measures, including waste management, fuel handling procedures, wildlife awareness protocols, and site cleanup practices, residual environmental effects are expected to be minimal, short-term, and reversible. No significant adverse environmental or socioeconomic impacts are anticipated.

Additional Information

SECTION A1: Project Info

Not applicable. No roads are proposed as part of the camp relocation.

SECTION A2: Allweather Road

Not applicable. No all weather roads are proposed as part of the camp relocation.

SECTION A3: Winter Road

Not applicable. No winter roads are proposed as part of the camp relocation.

SECTION B1: Project Info

Not applicable. No mineral resource is being explored as part of the camp relocation.

SECTION B2: Exploration Activity

Not applicable. No bulk sampling or stripping is proposed as part of the camp relocation.

SECTION B3: Geosciences

Not applicable. No geophysics is proposed as part of the camp relocation.

SECTION B4: Drilling

Not applicable. No drilling is proposed as part of the camp relocation.

SECTION B5: Stripping

Not applicable. No stripping is proposed as part of the camp relocation.

SECTION B6: Underground Activity

Not applicable. No underground activity is proposed as part of the camp relocation.

SECTION B7: Waste Rock

Not applicable. No waste rock is proposed as part of the camp relocation.

SECTION B8: Stockpiles

Not applicable. No stockpiles are proposed as part of the camp relocation.

SECTION B9: Mine Development

SECTION B10: Geology

SECTION B11: Mine

SECTION B12: Mill

SECTION C1: Pits

SECTION D1: Facility

SECTION D2: Facility Construction

SECTION D3: Facility Operation

SECTION D4: Vessel Use

SECTION E1: Offshore Survey

SECTION E2: Nearshore Survey

SECTION E3: Vessel Use

SECTION F1: Site Cleanup

All camp infrastructure, waste, and materials will be removed at the end of operations. The site will be inspected to ensure it is left in a clean and stable condition consistent with regulatory requirements.

SECTION G1: Well Authorization

SECTION G2: Onland Exploration

SECTION G3: Offshore Exploration

SECTION G4: Rig

SECTION H1: Vessel Use

SECTION H2: Disposal At Sea

SECTION I1: Municipal Development

Description of Existing Environment: Physical Environment

The Whale Cove Property is located within the Arctic tundra landscape characteristic of the Kivalliq Region. The terrain consists primarily of low-relief tundra with thin soils over bedrock, interspersed with wetlands and small drainage features. No permafrost disturbance, blasting, or terrain modification is proposed beyond minor site levelling for temporary camp infrastructure. The site is not located within a floodplain or coastal erosion zone.

Description of Existing Environment: Biological Environment

Vegetation at the proposed Vickers Camp site consists of common tundra plant species including mosses, lichens, grasses, and low shrubs. Wildlife potentially present in the area includes caribou, fox, small mammals, migratory birds, and occasional polar bears. The relocation does not introduce new disturbance beyond that already associated with temporary camp use, and no sensitive or protected species habitat has been identified at the site.

Description of Existing Environment: Socio-economic Environment

The Whale Cove Property is located on Inuit-owned land and has been historically used for exploration and land-based activities. The proposed camp relocation does not interfere with community infrastructure, harvesting areas, or travel routes. The project supports continued employment and contracting opportunities for Inuit and regional residents.

Miscellaneous Project Information

The relocation of the camp will reduce logistical inefficiencies and improve operational safety by consolidating activities at a more suitable location on the Whale Cove Property. No increase in camp capacity is proposed, and the camp will remain temporary in nature. All activities will comply with applicable NIRB terms and conditions, land use agreements, and environmental best practices.

Identification of Impacts and Proposed Mitigation Measures

The primary potential impacts associated with the camp relocation include localized ground disturbance, wildlife interactions, waste generation, and fuel handling risks. Mitigation measures include: Use of existing disturbed areas where feasible; Implementation of wildlife awareness and bear safety procedures; Proper storage and handling of fuel and hazardous materials; Spill prevention and response planning; Removal of all camp infrastructure and waste at project completion. With mitigation in place, potential impacts are expected to be minimal and temporary.

Cumulative Effects

The relocation of the Pistol Bay Camp to the Vickers Camp does not significantly contribute to cumulative effects in the region. The activity represents a continuation of existing exploration support operations rather than a new development footprint. When considered alongside other regional exploration activities, cumulative impacts remain low and reversible.

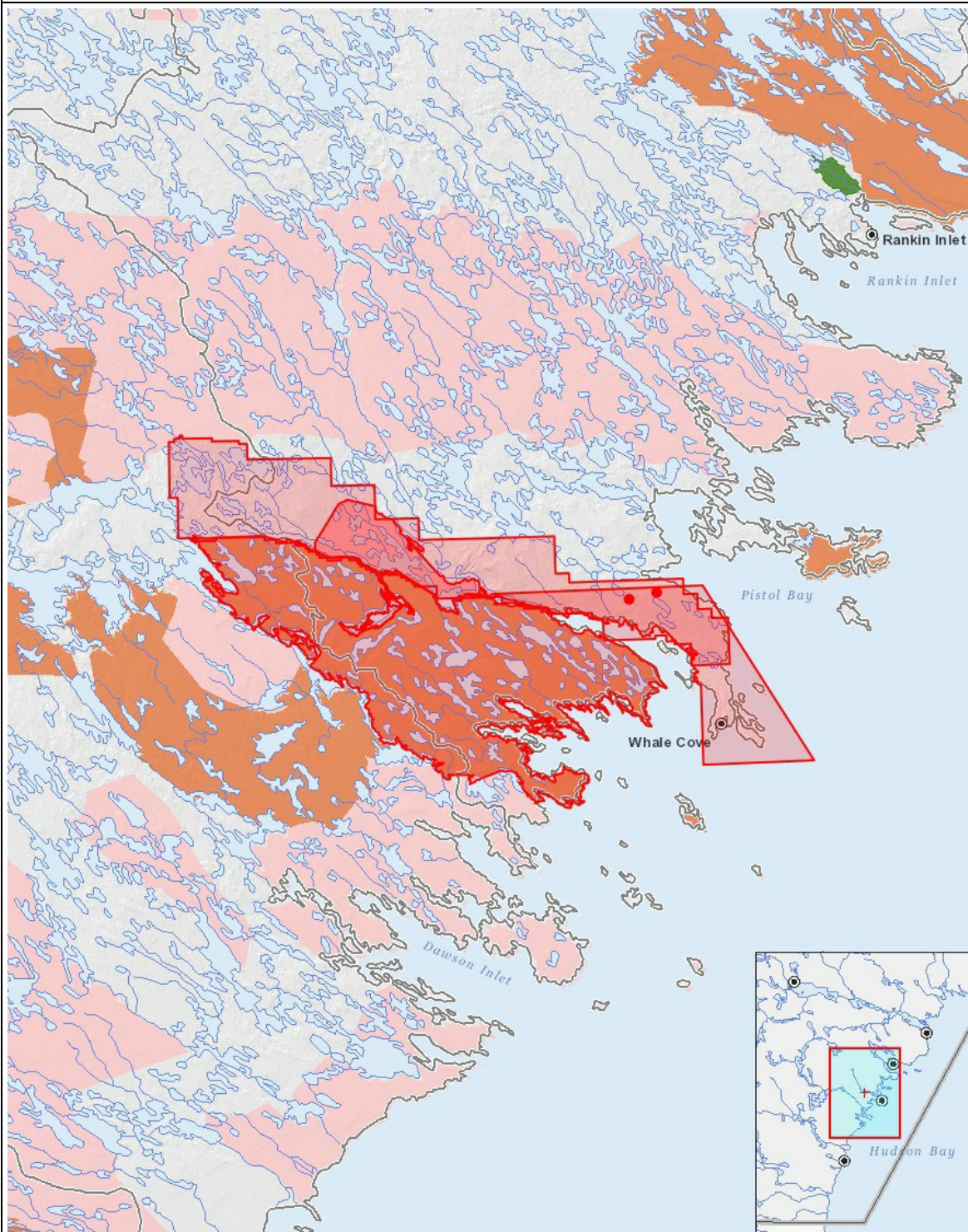
Impacts

Identification of Environmental Impacts

	PHYSICAL	Designated environmental areas	Ground stability	Permafrost	Hydrology / Limnology	Water quality	Climate conditions	Eskers and other unique or fragile landscapes	Surface and bedrock geology	Sediment and soil quality	Tidal processes and bathymetry	Air quality	Noise levels	BIOLOGICAL	Vegetation	Wildlife, including habitat and migration patterns	Birds, including habitat and migration patterns	Aquatic species, incl. habitat and migration/spawning	Wildlife protected areas	SOCIO-ECONOMIC	Archaeological and cultural historic sites	Employment	Community wellness	Community infrastructure	Human health
Construction																									
Camp	-	N	M	-	M	M	M	M	M	M	-	M	M	M	M	M	M	M	-	M	P	-	-	-	
Operation																									
Camp	-	M	M	-	M	-	M	M	M	-	M	M	M	M	M	M	M	M	-	M	P	-	-	-	
Decommissioning																									
Camp	-	M	M	-	M	-	M	M	M	-	M	M	M	M	M	M	M	M	-	M	P	-	-	-	

(P = Positive, N = Negative and non-mitigatable, M = Negative and mitigatable, U = Unknown)

Project Location



List of Project Geometries

1	polygon	Whale Cove Municipal Boundary
2	polygon	WC-01
3	polygon	WC-02
4	polygon	Whale Cove Property
5	point	New Camp
6	point	Old camp