

Whale Cove Project: Vickers Camp Expansion

Plain Language Summary

The Whale Cove Project is found near the Hamlet of Whale Cove in the Kivalliq Region of Nunavut. The project now consists of (a) the Whale Cove Property, which constitutes a number of Crown mineral claims covering an area of circa 974 sq. kms and (b) a further expanded area south of, but contiguous to the Whale Cove Property, which is entirely comprised of Inuit-owned land (subsurface and surface).

The project area extends from its eastern boundary approximately 9 km northwest of Whale Cove for 85 km to the west-northwest. In 2023, Northquest Ltd. and the Pistol Bay Project were renamed Whale Cove Gold Corp. and the Whale Cove Project, respectively. The project is owned by Whale Cove Gold Corp. (“WCGC”), a wholly owned (indirect) subsidiary of BG Gold Capital II Corp.

Today, the Whale Cove Project is an exploration project that has several gold prospects (many of which have been drilled), including the more advanced Vickers Deposit. Economic studies to examine the viability of the project will be progressed in the coming years, along with further exploration drilling, baseline studies and infrastructure upgrades.

The project currently operates an approved camp referred to as Pistol Bay Camp. In summary, WCGC has agreements, licences and authorizations to conduct exploration activities on the Whale Cove Property including:

- Operate a 35- persons camp at Pistol Bay,
- Construct and operate a 35- persons camp at Vickers and reclaim the Pistol Bay Camp,
- Conduct geophysical and ground surveys,
- Operate 2 exploration drills, and
- Drill on the Whale Cove Property.

Through this application, WCGC are proposing to NIRB to:

- Expand the regional exploration area,
- Increase the Vickers camp capacity from 35- persons to a 100-person all-season camp,
- Operate 2 more exploration drills (for a total of 4 drills to operate), and
- As needed, operate a 20-person mobile camp within the project area.

WCGC are further requesting to renew the Type B water licence 2BE-PBP2025 and will update leases and land use permits to reflect the camp expansion.

Whale Cove Project Conformity, Screenings, Land Use and Approvals

On October 25, 2021, the Whale Cove Project (formerly Pistol Bay Project, located 9 km from the community of Whale Cove, **Figure 1**) which consists of the active Pistol Bay Exploration Camp, received a positive conformity decision (NPC File No.: 149612) and NIRB File 11EN027 (Screening



Decision Report File No.21CN042) which included the following undertakings, works or activities at Vickers Camp:

- Archaeological assessment of Vickers campsite,
- Move existing Pistol Bay campsite closer to the Hamlet of Whale Cove, Vickers Camp, for year-round use (Proposed plywood flooring Late 2021, finalization Summer of 2022);
 - Additional infrastructure at Vickers to accommodate up to 35 people aluminum-framed “Weather Haven” 14’ by 16’ tents with plywood flooring;
 - New plywood kitchen, plywood shower/laundry tent, plywood core logging tent, and Pacto toilets where solid waste would be incinerated;
- Water withdrawal from the lake 550 meters (m) northwest of proposed Vickers camp;
- Pistol Bay camp clean-up and restoration to its original condition while historic drill core would remain; and
- Waste/fuel transportation practices as per existing project 11EN027.

The Whale Cove Project consists of Crown mineral claims located on Crown land, Commissioner’s Land, and Kivalliq Inuit Association Owned surface land. WCGC currently holds a Crown-Indigenous Relations and Northern Affairs Canada (CIRNAC) Land Use Permit (N2021CC0005) which will expire July 7, 2026, and has an Agreement of Permission to Occupy from the Government of Nunavut (GN), Department of Community and Government Services which expires August 31, 2026. WCGC applied for an extension and amendment to its Kivalliq Inuit Association (KIA) Land Use Permit and received a new land use permit KVL325C02 (Class III) on December 11, 2025, which expires on January 31, 2028. WCGC has an exploration agreement for WC-02, a large area of IOL surface and subsurface rights south of its existing project area, which would increase its overall project area to over 2,000 sq kms. WCGC is currently applying for surface rights over this area from the KIA.

On December 9, 2025, Nunavut Planning Commission determined that the camp expansion from 35 persons to 100 persons, increased exploration drilling footprint and increase of drills, required screening by NIRB.

The Whale Cove project operates its Pistol Bay Camp, Vickers Camp and advanced exploration activities under Nunavut Water Board Type B Licence 2BE-PBP2025, which requires renewal.

NIRB Application: Vickers Camp Expansion and Regional Exploration Drilling

Through this application, WCGC are proposing to NIRB to:

- Expand the regional exploration area,
- Increase the Vickers camp capacity from 35- persons to a 100-person all-season camp,
- Operate 2 more exploration drills (for a total of 4 drills to operate), and
- As needed, operate a 20-person mobile camp within the project area.

WCGC are further requesting to renew the Type B water licence 2BE-PBP2025 and will update leases and land use permits to reflect the camp expansion.



Figure 1- Whale Cove Gold Project Location and Nearby Communities



Vickers Camp Construction Plan

The Vickers camp construction (location is the same as previously screened by NIRB, refer to **Figure 2**), is planned to begin in 2026 and will involve workers accessing land and waters within the exploration leased area during the summer months. The construction of the approved 35-person camp will begin in June 2026 including:

- Plywood kitchen, plywood laundry/shower facilities (similar to existing facilities),
- Heli pad, maintenance shed, generators,
- Office, core shack and geotent, and construct
- Sixteen (16) x 14' x 16' Weatherhaven tents at the camp location.

Following the NIRB Screening Decision, receiving permits and the Type B renewal, WCGC plan to:

- Expand the Vickers camp by constructing an addition 20 Weatherhaven tents for a total 100-person camp (as illustrated in **Figure 3**), and
- Operation of 2 more exploration drills (for a total of 4 drills).



We propose that this construction will be completed by as early as September 2026 but may continue into 2027. Workers will prepare the Vickers camp area using equipment located at the Pistol Bay Camp or hire contractors based in Whale Cove. The primary work is expected to occur over approximately 75 days x 5 worker (375 worker days): 1 machine operator, 1 supervisor and 3 field technicians in 2026. Although the goal will be to occupy the Vickers camp location in 2026, this work may span into 2027. The construction timeframe between June 2026 to September 2027 will allow for flexibility in accommodating any unplanned delays due to weather, transition from the Pistol Bay camp to the Vickers camp, costs and logistical constraints.

Mobile Camp for Exploration to the Northwest of Whale Cove Project

Following NIRB approval, while remaining within land use permits, claims, lease conditions and adhering to NIRB conditions, best practices for mobile camps will be followed for the proposed 20-person mobile “secondary” camp. The main Vickers camp will continue to be the primary camp. WCGC plans to begin operating a mobile exploration camp as early as July 2027.

Predicted environmental impacts of undertaking and proposed mitigation measures

WCGC has consulted with the Whale Cove Hamlet, community members, agencies, the Kivalliq Inuit Association, and Inuit land users and will continue to do so throughout the project. To minimize habitat loss, the camp location was carefully selected on a site that was a previously used area to ensure minimal disturbance to land use and wildlife habitat. Potential impacts on wildlife and terrestrial environments will be mitigated, WCGC will continue to integrate Inuit Qaujimajatuqangit into the planning and camp design.

Overall, these camp improvements are expected to enhance exploration efficiency and result in insignificant environmental impacts. Standard mitigation measures, updated management plans, and best practices will be implemented to address potential impacts during the construction, operation, and eventual closure of the Vickers exploration camp and mobile exploration camp.

Consultation and Engagement

WCGC has engaged, and will continue to engage, with the most directly affected community of Whale Cove, as well as the KIA, on an ongoing, regular basis. In 2025, WCGC communicated with the mayor of Whale Cove daily (when fieldwork was ongoing), as well as the KIA whenever senior personnel were in Rankin Inlet. The company also made verbal and written submissions to the HTO, the Hamlet Council and the community (through an organised dinner event). The company also engages with the community on many other levels when, for example, purchasing groceries and fuel, hiring local workers, etc. In 2025, BG Gold also hired a Community Liaison Officer from Whale Cove, who reports to the Community Engagement Committee of BG Gold that is led by Dr. Marie Delorme.

Late in 2025, the company presented its planned scope of work in the coming years to the Hamlet of Whale Cove Council. The presentation referred to the potential for a Vickers camp and the use of a fly camp. More consultation is anticipated prior to the establishment of any such camp, including with the HTO. The current camp, which will continue to be used in 2026, is located along the edge of a sandy esker 14 km northwest of the Whale Cove airport (**Figure 2**).

The WCGC exploration project will continue to be guided by an engagement and consultation process, as well as by collection of scientific data, archaeological protection, respect of traditional land use, IQ, environmental and engineering assessments, as required under NIRB 11EN027, land use and leases.

Figure 2 – Whale Cove Exploration Camp Location

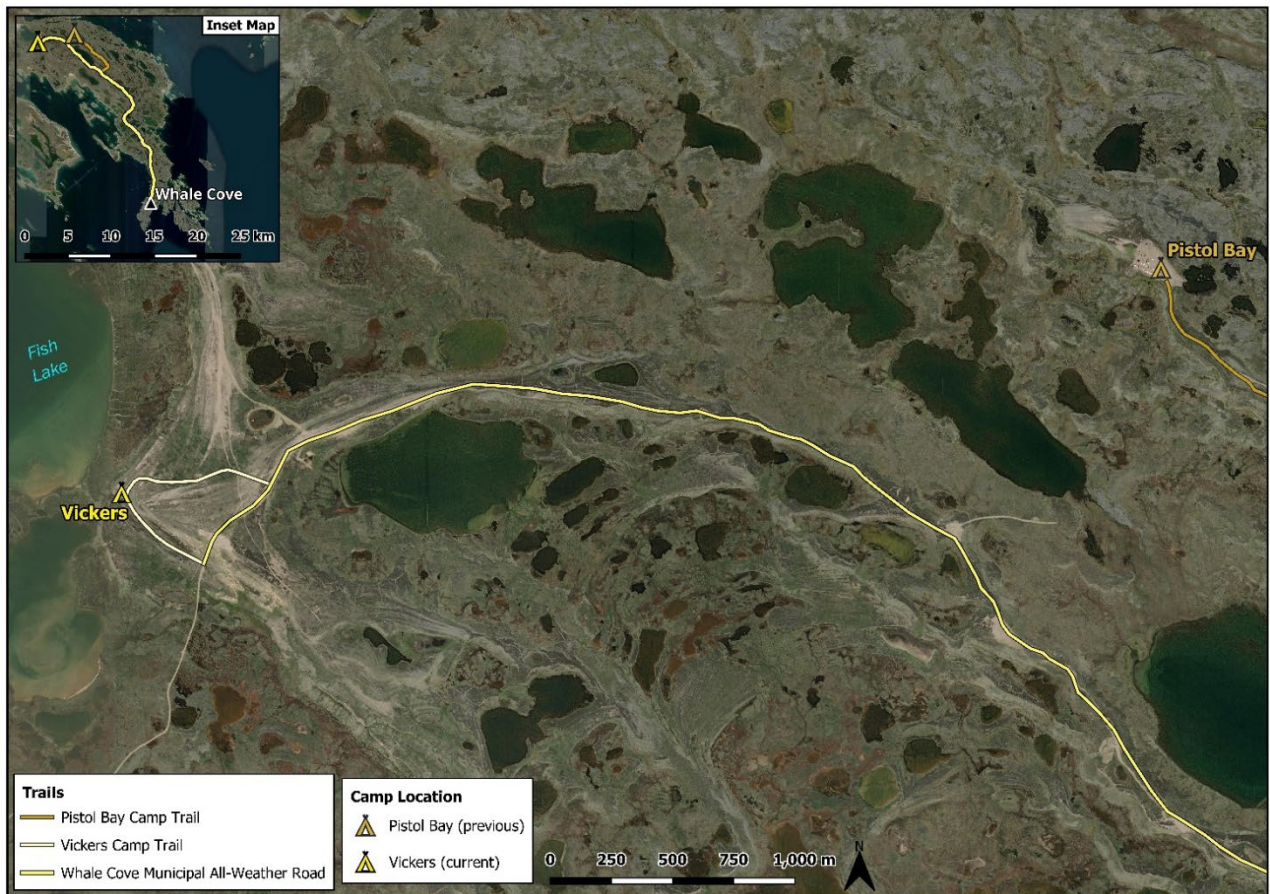


Figure 3 – Whale Cove Exploration Camp (NIRB Screening Decision No.21CN042), with proposed camp expansion. Water Supply from Fish Lake.

