



NIRB Uuktuutinga Ihivriuhikhamut #126326 Whale Cove Project Camp and Regional Exploration Expansion

Uuktuutinga Qanurittuq: Amendment
Havaap Qanurittunia: Mineral Exploration
Uuktuutinga Ublua: Thursday, February 26, 2026
Period of operation: from 2027-09-14 to 2037-09-14
**Havauhikhaq
Ikayuqtinga:** Brian May
Whale Cove Gold Corp
333 Bay Street, Suite 2400
Toronto Ontario M5H 2T6
Canada
Hivayautit Nampanga:: 2369702089, Kayumiktukkut Nampanga::

Inuinnaqtun: Tikirarjuap Havaaghaq: Hanavigiyauyumik Algakvikhanut Angikliyuumiutit Tikirarjuap Havaaghaq naniittuq haniani Haamlatkut Tikirarjuap Kivalliqmi Nunavunmi. Una havaaghaq hamna (a) Tikirarjuap Nunautait, nani pihimayut amihunik Kuraunmi uyagaghiuqtigut pinaluutilik qaanganiittuq 974 \$km² unalu (b) angikliyuumiutigiyauyuq nuna hivalia-tungaani, kihimi hanianit Tikirarjuap Nunautainik, nani tamatqiutilugu Inuit-nunauniat (ataani unalu qaangani). Havaaghap nunait tikingayuq kivataata kiglianit tikitilugu 9 km uataata-tungaat Tikirarjuap talvunga 85 km uataata-uataata-tungaat. 2023-mi, Northquest Ltd. unalu Pistol Bay-mut Havaaghaq atiit aallannguqtigayut hamunga Whale Cove Gold Corp. unalu Tikirarjuap Havaaghaq. Havaaghaq naniminiigiyaat Whale Cove Gold Corp. ("WCGC"), tamatqiutilugu naniminiigiyaayuq (iluanit) ikayuqtiuyunit BG Gold Capital II Corp. Ublumi, Tikirarjuap Havaaghaq qiniqhiavayuq havaaghaq amihunik guulhiqaqtunik (amihut ikuutaigayut), ilayuq hiamaniuyut Vickers-mi uyagakhiuqviit. Maniliungnikkut naunaiyautit ihivriuqniat havaaghap ayungnaitilaanga hivumuutiniat ukiuni qayanguyuni, ilayut qiniqhiatjutinut ikuutarniq, naunaiyautit unalu ihuatqutit pivaallirniit. Havaaghap Hulidjutait Havaaghaq maana aulayuq angigiyauyumik hanavigiyauyumik atilik Pistol Bay Camp. Naittumik, WCGC-kut angirutitaqaqtut, laisinitaqaqtut unalu pitjutighanik qiniqhiavighanut Tikirarjuap Nunautaini ilayut: Aulattiniq 35-nik inuqaqtumik hanavigiyauyumik Pistol Bay-mi, Hananiq unalu aulattiniq 35-nik inuqaqtumik hanavigiyauyumik Vickers-mi unalu utiqitiniq Pistol Bay-p hanavigiyauvia, Piniyaqtut nunap pittaarutainik naunaiyautinik, Aulattiniq 2-nik qiniqhiatjutinut ikuutanik, unalu Ikuutarniq Tikirarjuap Nunautaini. Tukhiutit hamunga Nunavunmi Avatiliriyit Katimayit (NIRB) Umuuna tukhiutikkut, WCGC-kut uuktuqtut NIRB-kunnut hamunga: Angikliyuumiutiklugu avatingni qiniqhiavighaq nuna, Angikliyuumiutilugu Vickers-mi hanavigiyauviup inuqaqtulaanga 35-nik inungnit 100-mut inungnut ukiuq tamaat hanavigiyauvik, Aulattiniq 2-nik aallanik qiniqhiatjutinut ikuutanik (atamut 4-nguqtut ikuutat aulaniaqtut), unalu Ihariagiyaatigut, aulattiniq 20-nik inuqaqtumik nuutauginnarialik hanavigiyauvik havaaghap nunangani. WCGC-kut uuktuqtullu nutaannguqtigutighaanik Imarmut Laisini (Type B) 2BE-PBP2025 unalu nutaannguqtiniat nunap baukhiit unalu nunamik atuqtunnut laisinit takupkaiyaangat hanavigiyauviup angikliyuumiutinganik.

Personnel

Personnel on site: 120

Days on site: 215

Total Person days: 25800

Operations Phase: from 2026-05-22 to 2027-09-14

Operations Phase: from 2027-09-14 to 2037-09-14

Closure Phase: from 2037-09-14 to 2038-09-14

Post-Closure Phase: from 2038-09-14 to 2040-09-14

Hulilukaarutit

Inigiya	Hulilukaarut Qanurittuq	Nunannga Qanurittaakhaanik	Initurlinga qanuritpa	Initurlinga utuqqarnitat unaluuniit Ingilraaqnitat Uyarannguqtut akhuurninnga	Qanitqiyayuq qanitqiamut nunallaat kitulluuniit ahiruqtaiyainnit nuna
Whale Cove Project Boundary	Mineral Exploration	Crown	The Whale Cove Project (Whale Cove Property, the Tavani Property (subsurface IOL WC-02), and parts of WC-01 and RI-11) is located in the vicinity of Whale Cove, Nunavut. The area has been used historically for traditional land use activities by Inuit, including travel and harvesting. Limited mineral exploration activities have occurred in the broader region in the past. No permanent infrastructure is currently present on the Property, and no active development is ongoing at this time.	Potential archaeological or cultural features were documented by a geologist during field activities. These observations were made by a non-archaeologist and do not constitute a formal assessment. The features have not been reviewed by a qualified archaeologist. Any discoveries will result in work stoppage and notification.	The Hamlet of Whale Cove is 9.5 km south of the southern boundary of the Whale Cove Project and 10 km east.
Vickers Camp	Camp	Commissioners	The location was chosen in consultation with the Hamlet and the Issatik HTO. After considering several different options for a camp site, a new site was chosen referred to as Vickers Camp approximately 4.2 km west of Pistol Bay site. A 35 person camp is authorized for operation and WCG is proposing to expand the camp to 100 persons.	Archaeological assessment was conducted by Golder in October 2021. All heritage sites will be protected or avoided according to the Nunavut Act and Nunavut Archaeological and Palaeontological Site Regulations.	22 km from Whale Cove

Nunaliin Ilauyun, Aviktuqhimayuniitunullu Ikayuuhiarunguyun

Nunauyuq	Atia	Timiuyuq	Upluani Uqaqatigiyaungmata
Tikiraryuaq	Brian Fleming	Hamlet of Whale Cove	2025-03-27
Kangirliniq	Luis Manzo	Kivalliq Inuit Association	2025-01-20
Tikiraryuaq	Brian Fleming	Hamlet of Whale Cove	2025-03-20
Kangirliniq	Luis Manzo	Kivalliq Inuit Association	2023-06-30
Iqaluit	Premier PJ Akeagok	Government of Nunavut	2025-01-20
Tikiraryuaq	Mayor Oliver Shipton	Hamlet of Whale Cove	2025-05-07

Kangirliniq	Luis Manzo	Kivalliq Inuit Association	2025-05-30
Kangirliniq	Luis Manzo	Kivalliq Inuit Association	2025-06-06
Kangirliniq	Luis Manzo	Kivalliq Inuit Association	2025-08-11
Tikiraryuaq	Mayor Oliver Shipton	Hamlet of Whale Cove	2025-09-16
Kangirliniq	Gabriel Karlik	Kivalliq Inuit Association	2005-09-17
Tikiraryuaq	Mona Okalik	Issatik HTO	2025-10-01

Angiuttauvaktunik

Naunaiqlugu nunanga talvani havauhikhaq ittuq:

Transboundary

Kivalliq

Angiuttauvaktunik

Munariniqmut Ayuittiaqtuq	Angirutinga Qanurittuq	Tadja Qanurittaakhaanik	Ublua Tuniyauyuq/Uuktuqtuq	Umikvikhaa Ublua
Crown-Indigenous Relations and Northern Affairs Canada	Land Use Permit N0021C0005	Active	2021-07-07	2026-07-07
Nunavut Kavamanga, Nunalingni Kavamatkunnilu Pivikhaqautikkut	Permission to Occupy	Active	2021-06-14	2026-08-31
Kivalliq Inuit Katimayit	KVL325C02	Active		
Crown-Indigenous Relations and Northern Affairs Canada	amendment to N2021C0005 for camp move	Not Yet Applied		
Nunavut Imaligiyyit Katimayit	amendment to 2BE PBP1520 for camp move	Not Yet Applied		
Nunavut Imaligiyyit Katimayit	2BE PBP1520 is expired. Applying for a new permit after the NIRB process	Not Yet Applied		

Project transportation types

Transportation Type	Qanuq Atuqtauniarmangaa	Length of Use
Air	transport of crew and goods via scheduled aircraft to Whale Cove airport. Heli supported drill activities from camp to drill sites	
Land	ATV , tractors, and snowmobile use for transport of crew and goods to and from drills. Truck for transport of goods and crew from airport to camp, goods from Hamlet to camp.	

Project accomodation types

Temporary Camp

Permanent Camp

Ihuaqutivaluin Atuqtauyukhan

Hanalrutit atuqtaunahuat (ukuallu ikuutat, pampiutainnik, tingmitinik, akhaluutininik, hunaluuniit)

Hanalrutit Qanurittuq	Qaffiuyut	Aktikkulaanga – Qanurittullu	Qanuq Atuqtauniarmangaa
Side-by-side (UTV)	2	900 kg	Transportation
Snowmobile	4	220 kg	Transportation
Skid-steer	1	2900 kg	Movement of goods
CAT Wheel Loader	1	4000 kg	Movement of goods, snow clearing
CAT D4	1	13272 kg	Moving drills on ice, snow clearing
Generator	2	33.1 Kva	Main power in camp and spare
Smart Ash portable incinerator	1	63 kg	Multipurpose batch load incinerator
Water pumps	2	50cc	Water for camp
Exploration drill	2	15000 kg	drilling

Qanurittuq Urhuqyuaq unalu Qayangnaqtut Hunavaluit Aturningga

Qanurittuq urhuqyuaq hunavaluit aturningga:	Urhuqyuaq Qanurittuq	Qaffiuyut qattaryut	Qattaryuk Aktikkulaanga	Atauttimut Qaffiuyut	Ilanga	Qanuq Atuqtauniarmangaa
Aviation fuel	fuel	50	205	10250	Liters	Helicopter
Gasoline	fuel	20	205	4100	Liters	Camp, vehicles
Propane	fuel	23	920	21160	Gallons	Camp
Diesel	fuel	20	205	4100	Liters	Camp and drill use
Used waste oil	hazardous	0	45	0	Gallons	burn in incinerator or backhaul

Imaqmik Aturningga

Ubluq qanuraaluk (m3)	Aturumayain imavaluin utiqittagaani qanuq	Atulirumayain imavaluin utiqittagani humi
299	Water pump with hose and screen at the end to avoid fish entrapment	Fish Lake (nearby water source that does not freeze to the bottom in winter (map provided))

Iqqakuq

Ikkakunik Munakgiyauyunik

Havauhikhaq Hulilukaarut	Qanurittuq Iqqakut	Ihumagiyauyuq Qanuraaluktut Atuqtait	Qanuq Iqqakuurniarmangaa	Halummaqtirarnirutikhan piyutin
Mineral Exploration	Ikulalaaqtun iqqakuuvaluin	moderate	Combustible wastes will be incinerated	Ash from the incinerator will be stored in sealed 45-gallon drums and disposed of in an approved facility
Mineral Exploration	Qirnarivyaktuq imaq	≤ 10 (m ³ /day)	Greywater will be disposed of in a sump	The sumps located adjacent to camp; allowed to percolate into overburden; minimum distance of 31 m from nearby water sources
Mineral Exploration	Hivuuranaqtun iqakuuvaluin	minimal	Hazardous waste will be collected and stored separately in sealed 45-gallon drums	Hazardous waste will be transported to an approved facility for proper disposal.
Mineral Exploration	Ikulalimanngittun iqqakuuvaluin	minimal	non-combustible waste will be collected	non combustible waste will be removed to the Whale Cove landfill for disposal
Mineral Exploration	Anaagun (inuin anaaguin)	100 persons	Pacto Toilets	Sewage from the Pacto toilets will be incinerated daily. Ash from the incinerators will be stored in sealed 45-gallon drums and disposed of in an approved landfill.

Avatiliriniqmut Ayurhautingit:

Potential environmental impacts of the Vickers Camp Expansion are limited to localized and temporary effects associated with camp installation and construction, operation of the expanded camp, and demobilization. The "NIRB - Identification of Environmental Impacts" for the construction phase are provided in the table below under "Impacts". No additional environmental impacts were identified for the operation of the Vickers camp nor closure of reclamation and closure of camps, which were previously screened under NIRB file #126275. Regional Exploration expansion requires an additional 2 drills and a mobile camp, however best practices for drilling will mitigate any potential environmental impacts. We will continue to adhere to the Caribou Mobile Protection Measures and engage with Whale Cove community members, municipality, KIA and stakeholders. With the implementation of standard management and mitigation measures previously authorized, including: waste management, fuel handling procedures, wildlife monitoring and awareness protocols, and site cleanup practices, residual environmental effects of this proposal are expected to be minimal, short-term, and reversible. No significant adverse environmental or socioeconomic impacts are anticipated.

Additional Information

SECTION A1: Project Info

No new roads are proposed. Small trails using existing ATV trails around camp will be used to support exploration activities.

SECTION A2: Allweather Road

Not applicable.

SECTION A3: Winter Road

Not applicable. No winter roads are proposed as part of the camp relocation.

SECTION B1: Project Info

Not applicable.

SECTION B2: Exploration Activity

The Whale Cove Project is an exploration project that has several gold prospects (many of which have been drilled), including the Vickers Deposit. The Vickers deposit is the most advanced prospect with a NI 43-101 compliant report that has estimated measured, indicated and inferred resources of gold. It has the potential to be economically viable at current gold prices. Economic studies to examine the viability of the project will be progressed in the coming years, along with further regional exploration drilling, baseline studies, hydrogeological and other advanced exploration work. Two additional drills (for a total of 4 drills) are proposed in this application for expanded regional exploration drilling on the expanded Whale Cove Project, including Commissioners, Crown and IOL outlined in this application. Geometric shape files have been provided, all of which are within the Whale Cove Project Boundary.

SECTION B3: Geosciences

Standard best practices will be used for geoscience activities.

SECTION B4: Drilling

Two additional drills are proposed for expanded regional drilling on the expanded Whale Cove Project, including Commissioners, Crown and IOL outlined in this application.

SECTION B5: Stripping

Not applicable.

SECTION B6: Underground Activity

Not applicable.

SECTION B7: Waste Rock

Not applicable.

SECTION B8: Stockpiles

Not applicable.

SECTION B9: Mine Development

SECTION B10: Geology

SECTION B11: Mine

SECTION B12: Mill

SECTION C1: Pits

SECTION D1: Facility

SECTION D2: Facility Construction

SECTION D3: Facility Operation

SECTION D4: Vessel Use

SECTION E1: Offshore Survey

SECTION E2: Nearshore Survey

SECTION E3: Vessel Use

SECTION F1: Site Cleanup

All camp infrastructure, waste, and materials will be removed at the end of operations. The site will be inspected to ensure it is left in a clean and stable condition consistent with regulatory requirements.

SECTION G1: Well Authorization

SECTION G2: Onland Exploration

SECTION G3: Offshore Exploration

SECTION G4: Rig

SECTION H1: Vessel Use

SECTION H2: Disposal At Sea

SECTION I1: Municipal Development

Qanurittuq Ittunik Avatinga: Avatingalluanga

The Whale Cove Project, which includes the Vickers Camp are located within the Arctic tundra landscape characteristic of the Kivalliq Region. The terrain consists primarily of low-relief tundra with thin soils over bedrock, interspersed with wetlands and small drainage features. No permafrost disturbance, blasting, or terrain modification is proposed beyond minor site levelling for Vickers camp expansion. The site is not located within a floodplain or coastal erosion zone.

Qanurittuq Ittunik Avatinga: Inuuhimayunut Avatinga

Vegetation around the Whale Cover Project consists of common tundra plant species including mosses, lichens, grasses, and low shrubs. Wildlife potentially present in the area includes caribou, fox, small mammals, migratory birds, and occasional polar bears. The relocation does not introduce new disturbance beyond that already associated with camp use, and no sensitive or protected species habitat has been identified at the site.

Qanurittuq Ittunik Avatinga: Inungit-maniliurutingit Avatinga

The Whale Cove Project, is located on Inuit-owned land and has been historically used for exploration and land-based activities. The proposed camp expansion does not interfere with community infrastructure, harvesting areas, or travel routes. The project supports continued employment and contracting opportunities for Inuit and regional residents.

Miscellaneous Project Information

The Vickers camp expansion will reduce logistical inefficiencies and improve operational safety by consolidating activities at a more suitable location on the Whale Cove Property and will allow for all-season activities. All activities will comply with applicable NIRB file # 126275 terms and conditions, land use agreements, and follow environmental best practices.

Naunaiyainiq ukuninnga Ayurhautingit unalu Piumayaat Ikkilyuumiutinahuarutit

The primary potential impacts associated with the mineral exploration and Vickers camp expansion include localized ground disturbance, wildlife interactions, waste generation, and fuel handling risks. Mitigation measures previously screened by NIRB include: Use of existing disturbed areas where feasible, Implementation of wildlife awareness and bear safety procedures, Proper storage and handling of fuel and hazardous materials, Spill prevention and response planning, Removal of all camp infrastructure and waste at project completion. With mitigation in place, potential impacts are expected to be minimal and temporary.

Tamatkiumayunik Ihuikgutivaktunik

The Vickers Camp expansion and regional exploration does not significantly contribute to cumulative effects in the region. The activity represents a continuation of existing exploration support operations rather than a new development footprint. When considered alongside other regional exploration activities, mitigation and management activities for the Whale Cove Project, cumulative impacts remain low and reversible.

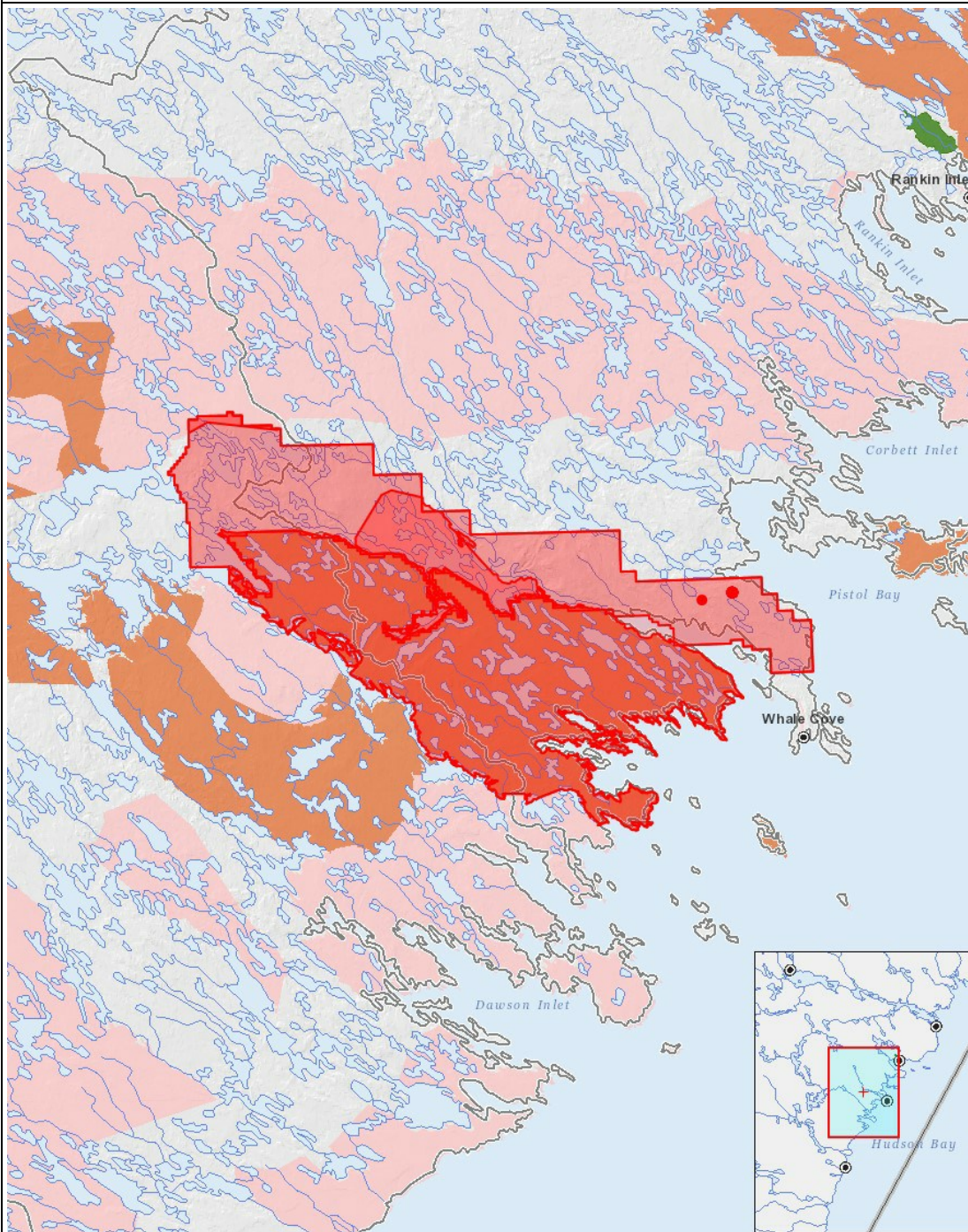
Impacts

Ilitariyauniq Avatiliriniqmut Ayurhauingit

	PHYSICAL		BIOLOGICAL										SOCIO-ECONOMIC									
	Designated environmental areas	Ground stability	Permafrost	Hydrology / Limnology	Water quality	Climate conditions	Eskers and other unique or fragile landscapes	Surface and bedrock geology	Sediment and soil quality	Tidal processes and bathymetry	Air quality	Noise levels	Vegetation	Wildlife, including habitat and migration patterns	Birds, including habitat and migration patterns	Aquatic species, incl. habitat and migration/spawning	Wildlife protected areas	Archaeological and cultural historic sites	Employment	Community wellness	Community infrastructure	Human health
Havakvinga																						
Camp	U	M	M	-	M	U	M	M	M	U	M	M	M	M	M	M	M	M	P	P	P	U
Aulapkaininnga																						
-	-	-	-	-	-	-	-	-	-	-	-	-	-	-	-	-	-	-	-	-	-	-
Piiqtauniq																						
-	-	-	-	-	-	-	-	-	-	-	-	-	-	-	-	-	-	-	-	-	-	-

(P = Nakuuyuq, N = Nakuungittut unalu mikhilimaittuq, M = Nakuungittut unalu mikhittaaqtuq, U = Naluyauyuq)

Havaariyauyukhamut Nayugaa



List of Project Geometries

1	polygon	Whale Cove Project Boundary
2	polygon	WC-01 IOL boundary
3	polygon	WC-02 IOL Boundary
4	polygon	RI-11 IOL Boundary
5	polygon	Whale Cove Property Boundary
6	point	Pistol Bay Camp
7	point	Vickers Camp

