



## **NIRB Uuktuutinga Ihivriuqhikhamut #126348 Cache Zone 2026**

**Uuktuutinga Qanurittuq:** New

**Havaap Qanurittunia:** Mineral Exploration

**Uuktuutinga Ublua:** Wednesday, February 11, 2026

**Period of operation:** from 2026-08-01 to 2026-08-07

**Havauhikhaq Ikayuqtinga:** John Tugak  
PO Box 14  
Arviat Nunavut X0C-0E0  
Canada  
Hivayautit Nampanga:: 867-857-2035, Kayumiktukkut Nampanga::



## Hulilukaarutit

Inigiya	Hulilukaarut Qanurittuq	Nunannga Qanurittaakhaanik	Initurlinga qanuritpa	Initurlinga utuqqarnitat unaluuniit Ingilraaqnitat Uyarannguqtut akhuurninnga	Qanitqiyauyuq qanitqiamut nunallaat kitulluuniit ahiruqtaiiyainnit nuna
Location is within IOL Parcel WC-08. A mineral exploration agreement between myself and NTI is in good standing and for this project.	Mineral Exploration	Inuit Owned Sub-Surface Lands	Mineral Exploration over the years	none	Whale Cove

### Nunaliin Ilauyun, Aviktuqhimayuniitunullu Ikayuuhiarunguyun

Nunauyuq	Atia	Timiuyuq	Upluani Uqaqatigiyaungmata
Information is not available			

# Angiuttauvaktunik

Naunaiqlugu nunanga talvani havauhikhaq ittuq:

Kivalliq

## Angiuttauvaktunik

Munariniqmut Ayuittiaqtuq	Angirutinga Qanurittuq	Tadja Qanurittaakhaanik	Ublua Tuniyauyuq/Uuktuqtuq	Umikvikhaa Ublua
Kivalliq Inuit Katimayit	Land Use License KVL125B01	Active	2025-02-27	2026-02-27

## Project transportation types

Transportation Type	Qanuq Atuqtauniarmangaa	Length of Use
Air	Float Plane	
Land	By foot within claim area	

## Project accomodation types

Temporary Camp

# Ihuaqutivaluin Atuqtauyukhan

Hanalrutit atuqtaunahuat (ukuallu ikuutat, pampiutainnik, tingmitinik, akhaluutinik, hunaluuniit)

Hanalrutit Qanurittuq	Qaffiuyut	Aktikkulaanga – Qanurittullu	Qanuq Atuqtauniarmangaa
Shaw Drill	1	2ftx4ftx2ft	Shallow Diamond Drilling
Generator 2000 Watt	1	2ftx1ftx2ft	To light tent, charge devices and use star link
Float Plan	1	25ftx25ft	To/From travel

## Qanurittuq Urhuqyuaq unalu Qayangnaqtut Hunavaluit Aturningga

Qanurittuq urhuqyuaq hunavaluit aturningga:	Urhuqyuaq Qanurittuq	Qaffiuyut qattaryut	Qattaryuk Aktikkulaanga	Atauttimut Qaffiuyut	Ilanga	Qanuq Atuqtauniarmangaa
Gasoline	fuel	1	205	205	Liters	Use gasoline on the drill and small 2000 watt generator

## Imaqmik Aturningga

Ubluq qanuraaluk (m3)	Aturumayain imavaluin utiqittagaani qanuq	Atulirumayain imavaluin utiqittagani humi
1	Manual retrieval for camp & diamond drill	Quartzite Lake

# Iqqakuq

## Ikkakunik Munakgiyauyunik

Havauhikhaq Hulilukaarut	Qanurittuq Iqqakut	Ihumagiyauyuq Qanuraaluktut Atuqtait	Qanuq Iqqakuurniarmangaa	Halummaqtirarnirutikhan piyutin
Drilling	Hivuuranaqtun iqakuuvaluin	less then 1 cubic meter water per day	Create depression and move waste water to cover with earth	Pull water with sump pump inside drill hole

### Avatiliriniqmut Ayurhautingit:

no environment impact as waste water properly moved to depression and cover with earth afterwards manually with shovel. Spill Plan in place during the exploration phase.

# **Additional Information**

## **SECTION A1: Project Info**

## **SECTION A2: Allweather Road**

## **SECTION A3: Winter Road**

## **SECTION B1: Project Info**

Gold Mineral Exploration

## **SECTION B2: Exploration Activity**

Magnetics using gradiometer to depth of 5 meter then diamond drilling

## **SECTION B3: Geosciences**

Gradiometer 3D bluetooth to cell and collect gravity/magnetic data

## **SECTION B4: Drilling**

Up to 60 meters of drilling is allocated within claim area

## **SECTION B5: Stripping**

none

## **SECTION B6: Underground Activity**

none

## **SECTION B7: Waste Rock**

none

## **SECTION B8: Stockpiles**

none

## **SECTION B9: Mine Development**

## **SECTION B10: Geology**

## **SECTION B11: Mine**

## **SECTION B12: Mill**

## **SECTION C1: Pits**

## **SECTION D1: Facility**

**SECTION D2: Facility Construction**

**SECTION D3: Facility Operation**

**SECTION D4: Vessel Use**

**SECTION E1: Offshore Survey**

**SECTION E2: Nearshore Survey**

**SECTION E3: Vessel Use**

**SECTION F1: Site Cleanup**

**SECTION G1: Well Authorization**

**SECTION G2: Onland Exploration**

**SECTION G3: Offshore Exploration**

**SECTION G4: Rig**

**SECTION H1: Vessel Use**

**SECTION H2: Disposal At Sea**

**SECTION I1: Municipal Development**

**Qanurittuq Ittunik Avatinga: Avatingalluanga**

Bedrock within claim area, moss ground with some lakes

**Qanurittuq Ittunik Avatinga: Inuuhimayunut Avatinga**

none

**Qanurittuq Ittunik Avatinga: Inungit-maniliurutingit Avatinga**

none

**Miscellaneous Project Information**

**Naunaiyainiq ukuningga Ayurhauitingit unalu Piumayaat Ikiykiuumiutinahuarutit**

create depression and move waste water to into it and cover with earth

**Tamatkiumayunik Ihuikgutivaktunik**

none



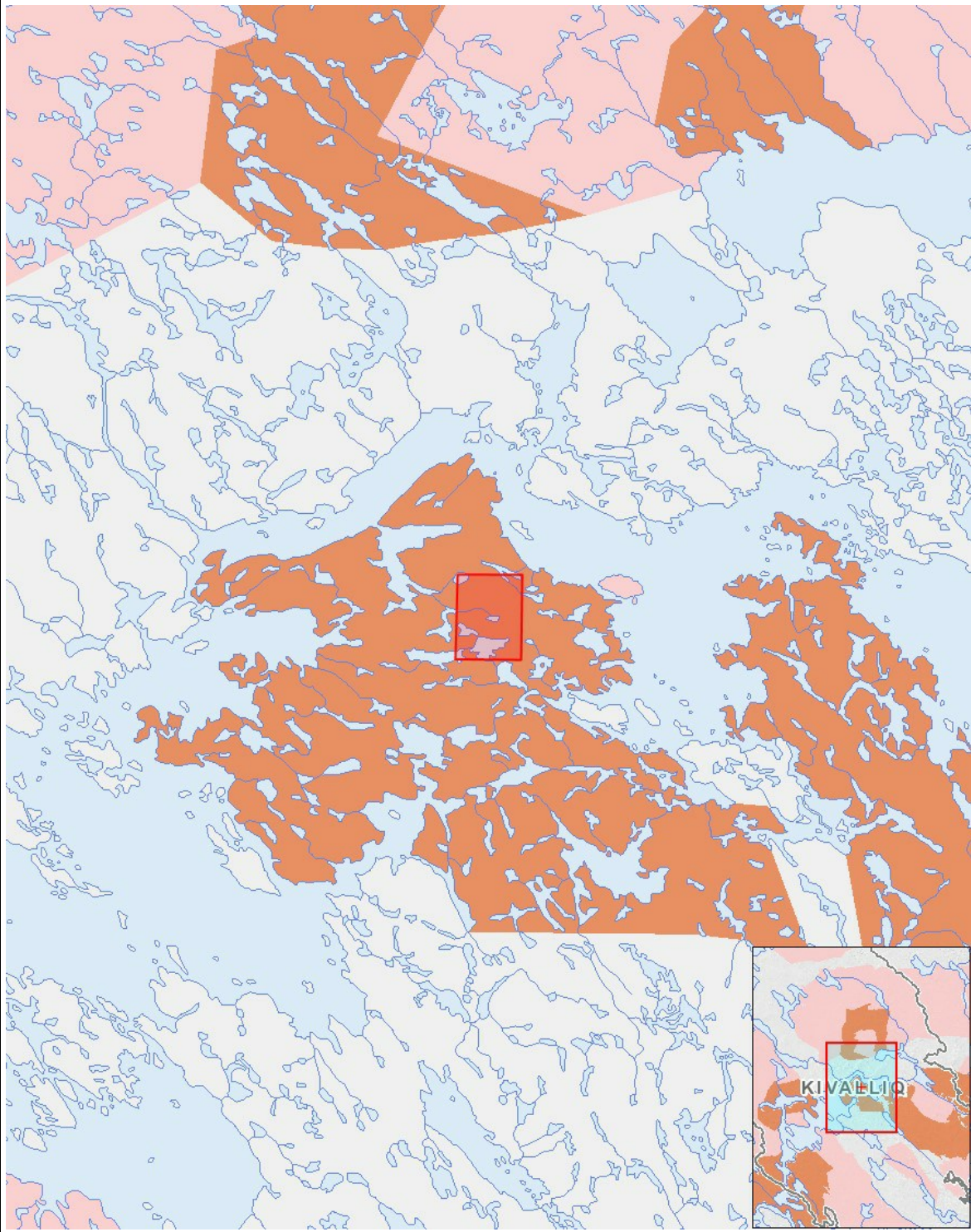
# Impacts

## Ilitariyauniq Avatiliriniqmut Ayurhautingit

	PHYSICAL	Designated environmental areas	Ground stability	Permafrost	Hydrology / Limnology	Water quality	Climate conditions	Eskers and other unique or fragile landscapes	Surface and bedrock geology	Sediment and soil quality	Tidal processes and bathymetry	Air quality	Noise levels	BIOLOGICAL	Vegetation	Wildlife, including habitat and migration patterns	Birds, including habitat and migration patterns	Aquatic species, incl. habitat and migration/spawning	Wildlife protected areas	SOCIO-ECONOMIC	Archaeological and cultural historic sites	Employment	Community wellness	Community infrastructure	Human health
<b>Havakvinga</b>																									
-	-	-	-	-	-	-	-	-	-	-	-	-	-	-	-	-	-	-	-	-	-	-	-	-	-
<b>Aulapkaininnga</b>																									
Mineral Exploration	M	M	M	-	M	M	U	M	M	U	M	M		M	M	M	M	M		M	P	U	M	M	
<b>Piiqtauniq</b>																									
-	-	-	-	-	-	-	-	-	-	-	-	-	-	-	-	-	-	-	-	-	-	-	-	-	-

(P = Nakuuyuq, N = Nakuungittut unalu mikhilimaittuq, M = Nakuungittut unalu mikhittaaqtuq, U = Naluyauyuq)

# Havaariyauyukhamut Nayugaa



## List of Project Geometries

- 1 polygon Location is within IOL Parcel WC-08. A mineral exploration agreement between myself and NTI is in good standing and for this project.