



NIRB Uuktuutinga Ihivriuqhikhamut #126348 Cache Zone 2026

Uuktuutinga Qanurittuq: New

Havaap Qanurittunia: Mineral Exploration

Uuktuutinga Ublua: Saturday, March 7, 2026

Period of operation: from 2026-07-28 to 2026-08-03

**Havauhikhaq
Ikayuqtinga:** John Tugak
Inuit Mining & Exploration
PO Box 1270
Arviat Nunavut X0C-0E0
Canada
Hivayautit Nampanga:: 867-525-0112, Kayumiktukkut Nampanga::

Hulilukaarutit

Inigiya	Hulilukaarut Qanurittuq	Nunangga Qanurittaakhaanik	Initurlinga qanuritpa	Initurlinga utuqqarnitat unaluuniit Ingilraaqnitat Uyarannguqtut akhuurningga	Qanitqiyauyuq qanitqiamut nunallaat kitulluuniit ahiruqtaiiyainnit nuna
Location is within IOL Parcel WC-08. A mineral exploration agreement between myself and NTI is in good standing and for this project.	Mineral Exploration	Inuit Owned Sub-Surface Lands	Mineral Exploration over the years	none	Whale Cove
Location of Camp & Fuel	Camp	Inuit Owned Sub-Surface Lands	Unknown	Unknown	Whale Cove. Fuel to be stored 31 M past high water mark
Drilling Location within Claim Area	Drilling	Inuit Owned Sub-Surface Lands	Unknown	Unknown	Whale Cove
2nd Location of Drilling within claim area	Drilling	Inuit Owned Sub-Surface Lands	Unknown	Unknown	Whale Cove

Nunaliin Ilauyun, Aviktuqhimayuniitunullu Ikayuuhiarunguyun

Nunauyuq	Atia	Timiuyuq	Upluani Uqaqatigiyaungmata
Tikiraryuaq	John William Tugak	Inuit Mining & Exploration	2026-04-30

Angiuttauvaktunik

Naunaiqlugu nunanga talvani havauhikhaq ittuq:

Transboundary
Kivalliq

Angiuttauvaktunik

Munariniqmut Ayuittiaqtuq	Angirutinga Qanurittuq	Tadja Qanurittaakhaanik	Ublua Tuniyauyuq/Uuktuqtuq	Umikvikhaa Ublua
Kivalliq Inuit Katimayit	Land Use License KVL125B01	Active	2025-02-27	2026-02-27

Project transportation types

Transportation Type	Qanuq Atuqtauniarmangaa	Length of Use
Air	Float Plane	
Land	By foot within claim area	

Project accomodation types

Temporary Camp

Ihuaqutivaluin Atuqtauyukhan

Hanalrutit atuqtaunahuat (ukuallu ikuutat, pampiutainnik, tingmitinik, akhaluutinik, hunaluuniit)

Hanalrutit Qanurittuq	Qaffiuyut	Aktikkulaanga – Qanurittullu	Qanuq Atuqtauniarmangaa
Shaw Drill	1	2ftx4ftx2ft	Shallow Diamond Drilling
Generator 2000 Watt	1	2ftx1ftx2ft	To light tent, charge devices and use star link
Float Plan	1	25ftx25ft	To/From travel
Plastic Gas Drum	1	205L	Gasoline Fuel Storage
Gradiometer 3D	1	Handheld	Magnetics
Sump Pump	1	0.5ftx0.25ftx0.25ft	Drain Waste Water
Reactor Battery Booster	1	Handheld Size	Power Sump Pump
Canvas Tent	1	9x7x5ft	Camping/Sleeper

Qanurittuq Urhuqyuaq unalu Qayangnaqtut Hunavaluit Aturningga

Qanurittuq urhuqyuaq hunavaluit aturningga:	Urhuqyuaq Qanurittuq	Qaffiuyut qattaryut	Qattaryuk Aktikkulaanga	Atauttimut Qaffiuyut	Ilanga	Qanuq Atuqtauniarmangaa
Gasoline	fuel	1	205	205	Liters	Use gasoline on the drill and small 2000 watt generator
Waste Water	hazardous	4	20	80	Liters	After drilling contain waste water

Imaqmik Aturningga

Ubluq qanuraaluk (m3)	Aturumayain imavaluin utiqittagaani qanuq	Atulirumayain imavaluin utiqittagani humi
1	Manual retrieval for camp & diamond drill	Quartzite Lake

Iqqakuq

Ikkakunik Munakgiyauyunik

Havauhikhaq Hulilukaarut	Qanurittuq Iqqakut	Ihumagiyauyuq Qanuraaluktut Atuqtait	Qanuq Iqqakuurniarmangaa	Halummaqtirarnirutikhan piyutin
Drilling	Hivuuranaqtun iqakuuvaluin	less then 1 cubic meter water per day	Create depression and move waste water to cover with earth	Pull water with sump pump inside drill hole
Waste disposal	Anaagun (inuin anaaguin)	5 gallons	Create depression, pour and cover with earth	None

Avatiliriniqmut Ayurhautingit:

no environment impact as waste water properly moved to depression and cover with earth afterwards manually with shovel. Spill Plan in place during the exploration phase.

Additional Information

SECTION A1: Project Info

SECTION A2: Allweather Road

SECTION A3: Winter Road

SECTION B1: Project Info

Gold Mineral Exploration

SECTION B2: Exploration Activity

Magnetics using gradiometer to depth of 5 meter then diamond drilling

SECTION B3: Geosciences

Gradiometer 3D bluetooth to cell and collect gravity/magnetic data

SECTION B4: Drilling

Up to 60 meters of drilling is allocated within claim area

SECTION B5: Stripping

none

SECTION B6: Underground Activity

none

SECTION B7: Waste Rock

none

SECTION B8: Stockpiles

none

SECTION B9: Mine Development

SECTION B10: Geology

SECTION B11: Mine

SECTION B12: Mill

SECTION C1: Pits

SECTION D1: Facility

SECTION D2: Facility Construction

SECTION D3: Facility Operation

SECTION D4: Vessel Use

SECTION E1: Offshore Survey

SECTION E2: Nearshore Survey

SECTION E3: Vessel Use

SECTION F1: Site Cleanup

SECTION G1: Well Authorization

SECTION G2: Onland Exploration

SECTION G3: Offshore Exploration

SECTION G4: Rig

SECTION H1: Vessel Use

SECTION H2: Disposal At Sea

SECTION I1: Municipal Development

Qanurittuq Ittunik Avatinga: Avatingalluanga

Bedrock within claim area, moss ground with some lakes

Qanurittuq Ittunik Avatinga: Inuuhimayunut Avatinga

none

Qanurittuq Ittunik Avatinga: Inungit-maniliurutingit Avatinga

none

Miscellaneous Project Information

Naunaiyainiq ukuningga Ayurhautingit unalu Piumayaat Ikiykiuumiutinahuarutit

create depression and move waste water to into it and cover with earth

Tamatkiumayunik Ihuikgutivaktunik

none

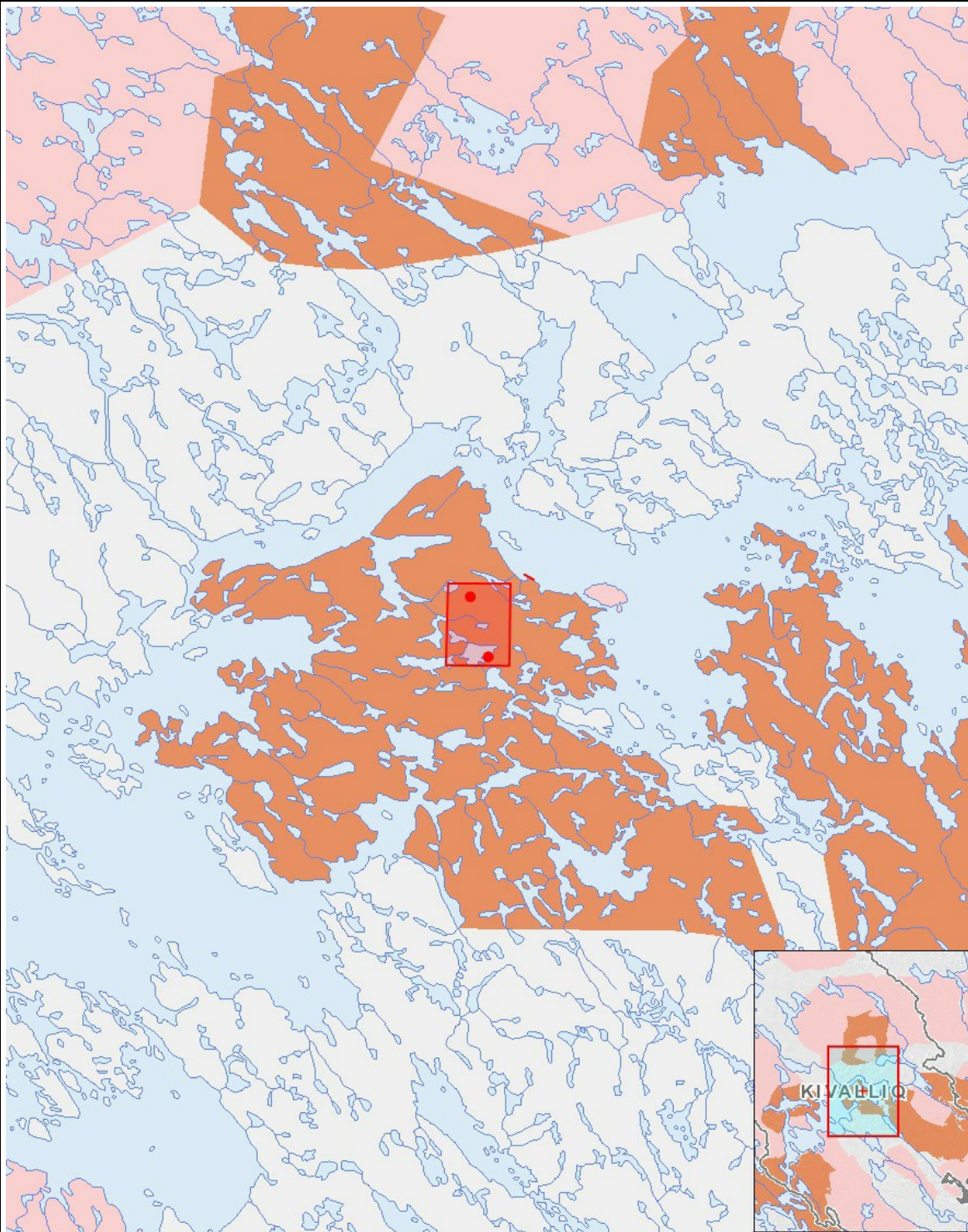
Impacts

Ilitariyauniq Avatiliriniqmut Ayurhauingit

	PHYSICAL	Designated environmental areas	Ground stability	Permafrost	Hydrology / Limnology	Water quality	Climate conditions	Eskers and other unique or fragile landscapes	Surface and bedrock geology	Sediment and soil quality	Tidal processes and bathymetry	Air quality	Noise levels	BIOLOGICAL	Vegetation	Wildlife, including habitat and migration patterns	Birds, including habitat and migration patterns	Aquatic species, incl. habitat and migration/spawning	Wildlife protected areas	SOCIO-ECONOMIC	Archaeological and cultural historic sites	Employment	Community wellness	Community infrastructure	Human health
Havakvinga																									
-	-	-	-	-	-	-	-	-	-	-	-	-	-	-	-	-	-	-	-	-	-	-	-	-	-
Aulapkaininnga																									
Camp	M	M	U	-	M	U	M	M	M	U	U	U		M	M	M	U	M		M	P	M	U	M	
Mineral Exploration	M	M	M	-	M	M	U	M	M	U	M	M		M	M	M	M	M		M	P	U	M	M	
Piiqtauniq																									
-	-	-	-	-	-	-	-	-	-	-	-	-	-	-	-	-	-	-	-	-	-	-	-	-	-

(P = Nakuuyuq, N = Nakuungittut unalu mikhilimaittuq, M = Nakuungittut unalu mikhittaaqtuq, U = Naluyauyuq)

Havaariyauyukhamut Nayugaa



List of Project Geometries

- | | |
|-----------|---|
| 1 polygon | Location is within IOL Parcel WC-08. A mineral exploration agreement between myself and NTI is in good standing and for this project. |
| 2 polygon | Location of Camp & Fuel |
| 3 point | Drilling Location within Claim Area |
| 4 point | 2nd Location of Drilling within claim area |