

Bayridge Resources Corp. – Baker Lake Uranium Project / Baker Basin Project NON-TECHNICAL SUMMARY

Contact: Mark W. Richardson, P.Geo.

Revised April 27, 2026

ATTN: Nunavut Planning Commission

Summary

The Proponent is requesting approval to conduct a single, time-limited, exploration-only mineral exploration program at the Baker Lake Project during the 2026 field season (beginning after July 15 and continuing through September 10).

Approval is requested for early-stage, non-invasive exploration activities, including geological mapping and prospecting, ground-based radiometric surveys, verification of historical drill hole locations, and review of historic drill core.

- Subject to permit approval and the results of early-stage work, a limited diamond drilling program of up to 3,500 metres may be undertaken. No bulk sampling, ore extraction, mine development, mineral processing, permanent infrastructure, or long-term camp is proposed.
- The 2026 field program will operate under a helicopter-supported, daily fly-in / fly-out model from Baker Lake. Personnel will be housed in commercial accommodations in Baker Lake and no permanent camp will be established at the Project site.
- One small, temporary exploration outpost is proposed at a previously disturbed historic site. It will be limited to a fuel cache and canvas tents for core logging, temporary core storage, first aid / emergency / pilot shelter, and temporary storage of drill supplies and spill-response equipment, powered by a small generator for operational use only.
- Limited water use, waste management, and spill response are proposed in support of drilling-related activities, subject to applicable approvals. No domestic water use will be utilized at the Project site.

No overland hauling, ATV use, snowmobile use, or other overland access activities are proposed as part of the current 2026 program.

- All infrastructure will be temporary and will be fully removed at the conclusion of exploration. The site will be reclaimed, including remediation of legacy disturbance at the historic outpost location, as required.
- Project activities will be planned and conducted in consultation with the Hunters and Trappers Organization (HTO) and the Kivalliq Inuit Association (KIA), will incorporate Inuit Qaujimagatunqangit, and will include adaptive measures such as suspending, delaying, or relocating operations if caribou are present. In response to regulatory and stakeholder feedback regarding caribou sensitivity periods, higher-impact activities such as diamond drilling are

planned to occur after mid-July to reduce potential interactions during calving and early post-calving periods.

### **Project Overview**

The Baker Lake Project (the Project) is operated by Bayridge Resources Corp. (the Proponent) and is located in the Kivalliq Region of Nunavut, approximately 65 km southeast of the hamlet of Qamani'tuaq (Baker Lake). The Project is based out of Baker Lake and the current 2026 field program is helicopter-supported.

The Project is exploration-only and does not include mine construction, ore extraction, mineral processing, bulk sampling, permanent infrastructure, or long-term camps.

### **Exploration Scope and Schedule**

The Project is proposed as one discrete exploration season planned to begin after July 15 and continue through September 10, 2026, subject to receipt of all required permits and approvals. The objective of the program is to evaluate uranium-bearing geological targets through early-stage exploration activities and, if warranted, limited diamond drilling.

### **Project Description and Location**

The Project comprises 83 mineral claims, covering approximately 54,731.25 ha of Crown land and 7,250 ha of Inuit Owned Land. The Project lies within NTS map sheets 55M/10 to 55M/15, centred near 63°47' N, 95°20' W.

### **Historical Exploration**

The Project area has experienced intermittent mineral exploration since the 1970s. The most recent significant exploration activity was conducted by a previous operator, Pacific Ridge Exploration, in 2008. That historical work included a property-wide airborne geophysical survey and a diamond drilling program.

These activities were not undertaken by the current Proponent and were screened separately by the Nunavut Planning Commission. The work was authorized under Land Use Permit #N2006J0017 (expired August 18, 2008), Water Licence NWB #2BE-KAZ0609, Prospecting Licence #N33273, and Kivalliq Inuit Association Licence #KVL106C22 (reissued as KVL306C23 on November 15, 2007), which permitted access to Inuit Owned Lands.

No exploration activities have occurred on the Project since the expiry of those authorizations in 2008.

### **Permitting Status**

NPC File No. 150613 [Baker Basin Project]: The Nunavut Planning Commission has determined that the Baker Basin Project conforms to the Keewatin Regional Land Use Plan. The Proponent has committed to comply with the applicable conformity requirements set out in Appendices C, G, and H of the Plan.

The Proponent is seeking the authorizations required for the proposed 2026 exploration program, including the applicable land use and water approvals for Crown land activities, limited water use, minor land disturbance, waste management, and the establishment of one temporary exploration outpost and a small fuel cache required to support exploration drilling and related operations.

No exploration activities, infrastructure, or fuel storage are proposed on Inuit Owned Land. Access across Inuit Owned Lands, if required, will be limited to transit only and will be addressed through the appropriate access arrangements.

### **Logistics and Transportation**

No overland hauling, ATV use, snowmobile use, or other overland access activities are proposed as part of the current 2026 program. Project-site access and operational support will be helicopter-based.

Exploration activities are phased and conservative in scope. Early-stage work will focus on non-invasive methods, including:

- Geological mapping and prospecting;
- Ground-based radiometric surveys;
- Verification of historical drill hole locations; and
- Review of historic drill core.

Subject to permit approval and results of early-stage work, a single diamond drilling program of up to 3,500 metres may be undertaken later in the field season, after mid-July, to align with caribou timing considerations (see Figures 2 and 3 for approximate drill locations).

The Project will operate under a helicopter-supported, daily fly-in / fly-out model from Baker Lake. Commercial accommodations in Baker Lake (e.g., Baker Lake Lodge or equivalent) will serve as the primary base of operations. No permanent exploration camp will be established at the Project site. Fixed-wing travel may be used for transportation to and from Baker Lake or other authorized infrastructure, but no temporary fixed-wing support area is proposed at the Project site.

Drilling and helicopter activity will include adaptive measures such as timing adjustments, suspension, or relocation of activities if caribou are present, in accordance with direction from local wildlife monitors and HTO guidance.

To mitigate any potential impact on wildlife, helicopter operations will maintain a minimum altitude of 610 m (2,100 ft) above ground level near wildlife where safe and practical, and flight paths will be adjusted to avoid wildlife presence where possible.

### **Temporary Exploration Outpost**

To support drilling activities and ensure operational safety, the Proponent proposes to establish one small, temporary exploration outpost at a previously disturbed historic exploration camp location within

the Project area (see Figure 2). The outpost will have a limited footprint and will not constitute a full-service camp.

The outpost will be used exclusively for:

- A fuel cache to support drilling and helicopter operations;
- A canvas tent for core logging and temporary core storage;
- A canvas tent serving as a first-aid station and emergency shelter; and
- A canvas tent for temporary storage of drill supplies and spill-response equipment.

The outpost will be powered by a small generator used solely for operational purposes such as core cutting. The outpost will not include routine sleeping accommodation, food preparation facilities, or permanent sewage systems. Overnight stays at the Project site will occur only when required for operational safety or emergency response and will be managed in accordance with applicable permits and management plans.

All outpost infrastructure will be removed following exploration, and reclamation of the historic outpost area will be undertaken to mitigate existing environmental impacts.

### **Land Use Designations**

As the Project area overlaps Limited Use and Conditional Use land use designations under the Nunavut Land Use Plan (Figure 3), the Proponent will undertake consultation with the HTOs and the KIA to incorporate Inuit Qaujimajatuqangit into Project planning, scheduling, and mitigation measures. Meaningful, in-person discussions are planned in Baker Lake.

### **Local Employment**

Local employment and business opportunities during the 2026 exploration season are expected to include a local wildlife monitor, translators, local field assistants, and expediting and logistical support services.

### **Consultation**

Planning, consultation, and permitting activities will occur between January and April 2026, with field operations occurring during the summer field season (mid-July to September). Caribou calving areas designated as conditional- or limited-use zones will be avoided, and activities will comply with applicable land-use designations and wildlife protection measures, including consideration of caribou timing and sensitivity periods.

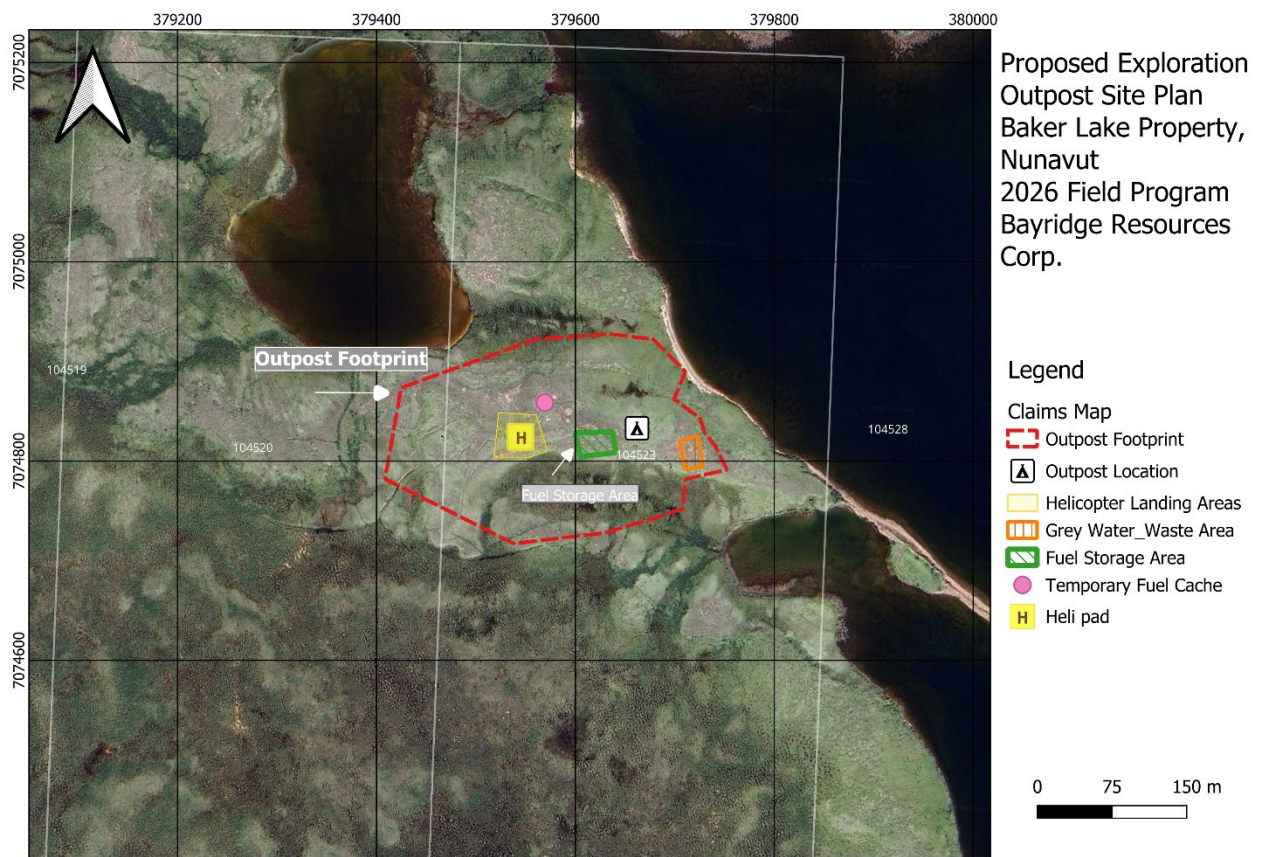
The Proponent has engaged a community outreach coordinator who will provide a two-way line of communication between the company and the community.

The Proponent visited Baker Lake from January 16 to January 21, 2026, to meet with community representatives and gain a better understanding of local perspectives and expectations. During this visit, the Proponent met with the Senior Administrative Officer (SAO) of the Hamlet of Baker Lake.

The SAO advised that early engagement and ongoing consultation with the HTO and KIA are essential to guiding proposed exploration activities and ensuring community and land-use considerations are incorporated into Project planning. A return visit to Baker Lake was encouraged to hold an informal community meeting to present information on the proposed exploration program and provide opportunities for community feedback.

During the January 2026 visit, the Proponent also introduced themselves to community members at local gathering places and explained that the purpose of the visit was to listen, learn, and understand how a new exploration company can engage respectfully and responsibly.

The Proponent acknowledges this guidance and notes that feedback received through early engagement has been incorporated into Project planning, including adjustments to timing and operational approach where feasible. The Proponent commits to maintaining open, honest, and transparent communication with the Hamlet, HTO, KIA, and community members throughout Project planning and implementation, and to continuing to adjust activities where feasible in response to community input.



**Figure 1: Outpost Map:** Satellite view of historic camp – and proposed 2026 outpost-fuel cache location. Remnant structures still exist and will be evaluated during 2026 exploration season.

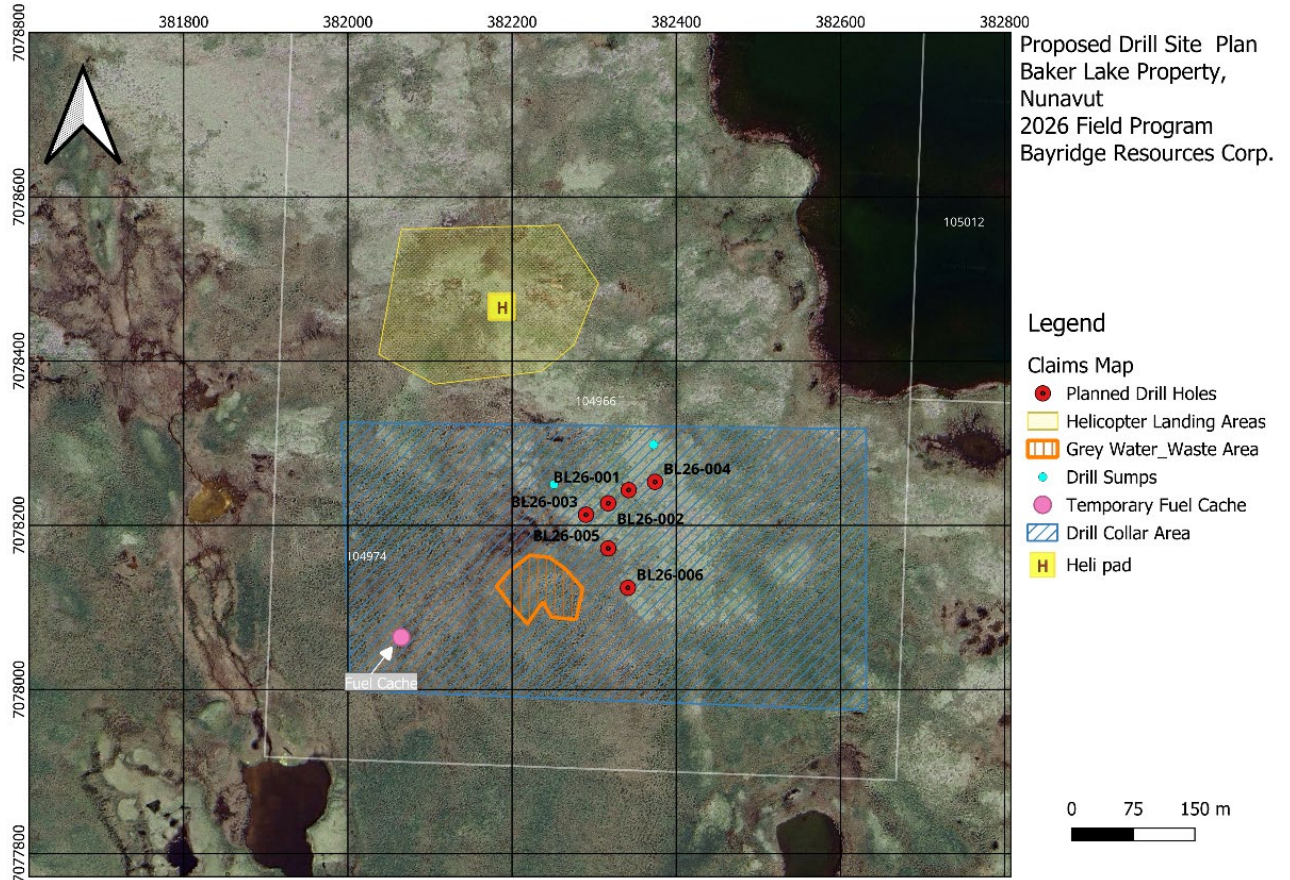


Figure 2: Drill Area 1:

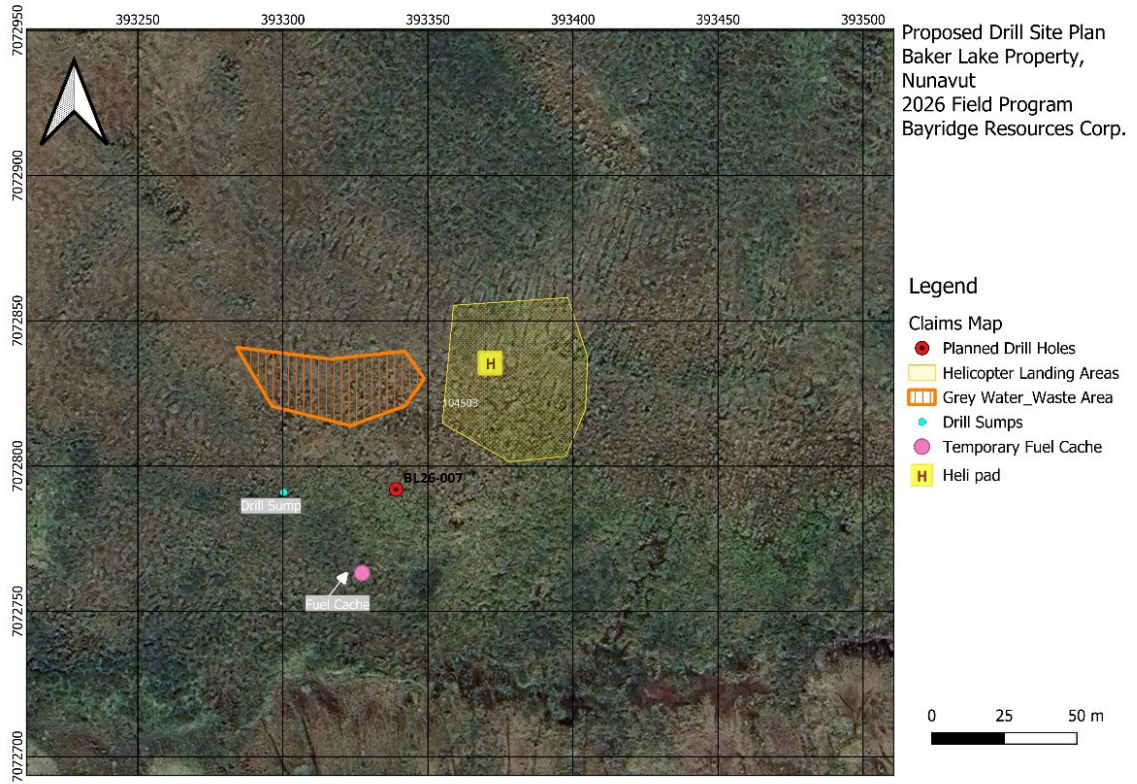


Figure 2: Drill Area 1:



Figure 4: Satellite view of Project location showing mineral tenure, proposed exploration activities, temporary outpost location and proposed flightline

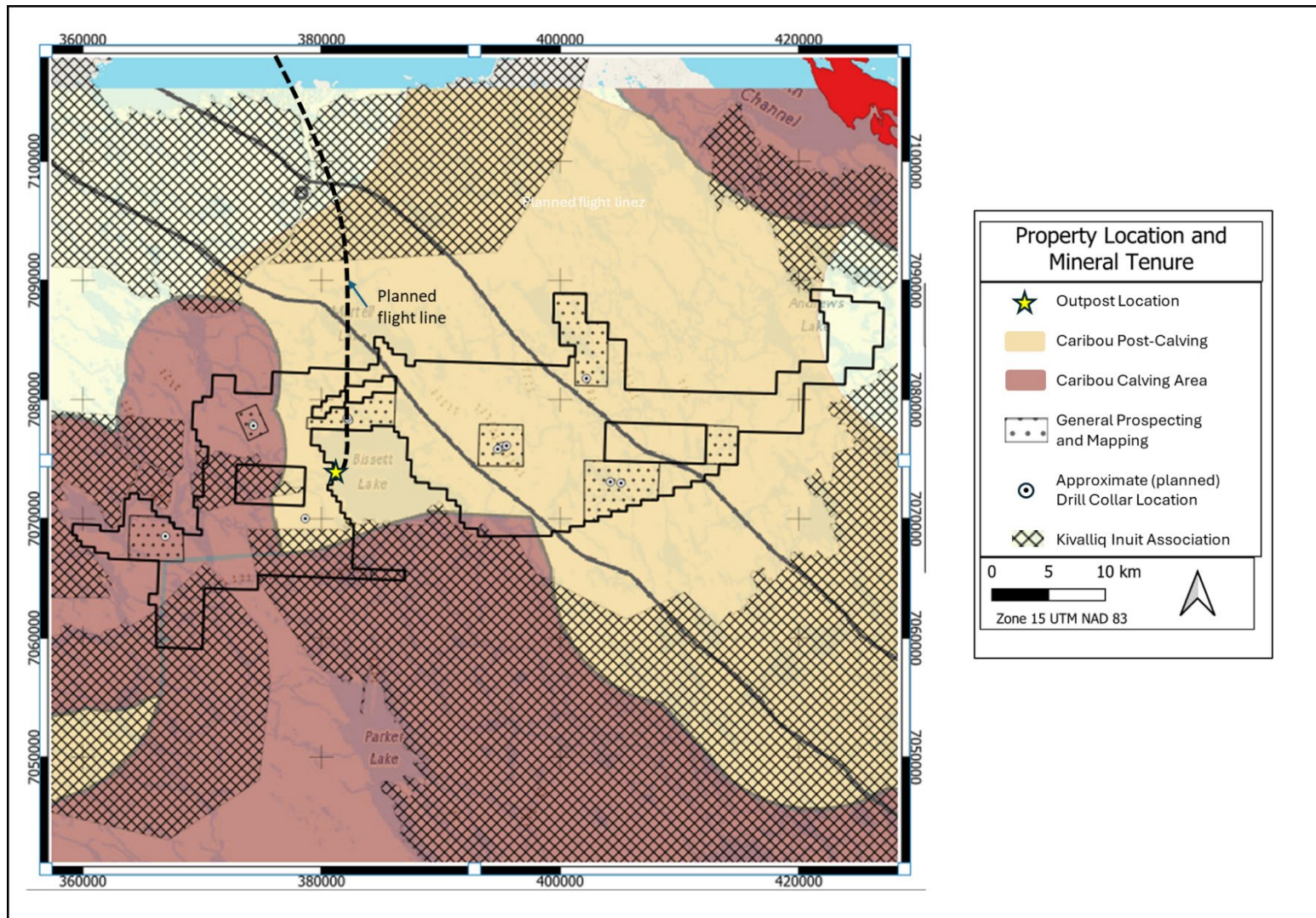


Figure 4: Project location showing mineral tenure, proposed exploration activities, temporary outpost location, and land use designations under the Draft Nunavut Land Use Plan, including **Caribou Calving** and **Post-Calving** areas. Planned drill collar locations and flight paths are shown for reference.

Table 1:

Project component	Ground disturbance? yes/no	Approximate footprint	Coordinates / map reference	Previously disturbed? yes/no/unknown	Previously archaeologically assessed? yes/no/unknown	CH review required? yes/no/to confirm	Proposed mitigation / avoidance notes
<b>BL26-001 – L7-07-06 twin/scissor re-drill pad + collar(s)</b>	Yes	Existing drill pad, 0.05–0.10 ha; allow ≤0.02 ha for minor pad rework / offset collar	UTM 382342E 7078243N; scissor collar offsets within ~20–50 m (TBD staking)	Yes	Unknown	To confirm	Re-use existing disturbed pad/access; keep offsets within existing disturbance where feasible; flag disturbance limits; stop-work protocol if cultural material is encountered.
<b>BL26-002 – L7-07-05 twin/scissor re-drill pad + collar(s)</b>	Yes	0.05–0.10 ha; ≤0.02 ha expansion contingency	UTM 382317E 7078227N; offsets ~20–50 m (TBD)	Yes	Unknown	To confirm	Re-use existing pad; micro-site any offset collar to avoid new clearing; keep laydown / cuttings containment within disturbed pad area.
<b>BL26-003 – L7-07-04 twin/scissor re-drill pad + collar(s)</b>	Yes	0.05–0.10 ha; ≤0.02 ha expansion contingency	UTM 382290E 7078213N; offsets ~20–50 m (TBD)	Yes	Unknown	To confirm	Re-use existing pad; avoid widening any existing access; flag boundaries; stop work if artefacts or features are identified.
<b>BL26-004 – L7-07-07 twin/scissor re-drill pad + collar(s)</b>	Yes	0.05–0.10 ha; ≤0.02 ha expansion contingency	UTM 382374E 7078253N; offsets ~20–50 m (TBD)	Yes	Unknown	To confirm	Re-use existing pad; keep any additional disturbance minimal and within flagged limits; avoid new linear disturbance where practicable.
<b>BL26-005 – L7-07-08 twin/scissor re-drill pad + collar(s)</b>	Yes	0.05–0.10 ha; ≤0.02 ha expansion contingency	UTM 382317E 7078172N; offsets ~20–50 m (TBD)	Yes	Unknown	To confirm	Re-use existing pad; keep scissor offsets tight; stage equipment on previously disturbed ground where practicable.
<b>BL26-006 – L7-07-09 twin/scissor re-drill pad + collar(s)</b>	Yes	0.05–0.10 ha; ≤0.02 ha expansion contingency	UTM 382341E 7078124N; offsets ~20–50 m (TBD)	Yes	Unknown	To confirm	Re-use existing pad/access; minimize new disturbance; flag and avoid undisturbed or vegetated areas.
<b>BL26-007 – Unconformity testing (new deep test pad + collar)</b>	Yes	New drill pad, 0.05–0.10 ha, plus any short spur or collar offset if required	UTM 393339E 7072792N; offsets ~20–50 m (TBD)	Unknown	Unknown	Yes	Final site selection after CH review; micro-site to avoid sensitive features; use smallest practicable pad; clearly flag limits and buffers; stop-work protocol applies.
<b>Drill sump / cuttings containment area(s)</b>	Yes	~10 × 10 m (0.01 ha) per sump, or equivalent lined / bermed containment, located at or near pad	Co-located with each drill pad / drill site	Yes for re-drill pads; unknown for any new site	Unknown	To confirm	Use lined / bermed containment where required; keep within drill pad disturbance where practicable; manage fluids and cuttings to prevent off-pad release; reclaim and close out in accordance with the project plans.

<b>Fuel cache / staging area(s)</b>	Yes	~15 × 15 m (0.02 ha) per cache / staging area, or smaller if co-located on existing disturbed pad	Prefer co-location on existing disturbed pad / staging area; final coordinates TBD	Yes where co-located at historic disturbed site; otherwise unknown	Unknown	Yes / To confirm	Place on previously disturbed ground where practicable; use secondary containment / berms; maintain spill response equipment on site; avoid drainage lines and waterbodies; clearly flag disturbance boundaries; refuelling only within designated area.
<b>Temporary outpost footprint</b>	Yes	Small temporary outpost footprint; exact layout TBD; anticipated to remain within previously disturbed historic site footprint	Historic outpost area at approximately 63°47'4.40"N, 95°26'21.64"W; final disturbance map to be confirmed	Yes	Unknown	Yes / To confirm	Restrict new disturbance to previously disturbed outpost area where practicable; micro-site tents, generator, toilet, incinerator, storage, and first aid / emergency shelter within disturbed limits; flag footprint before setup; stop-work protocol if cultural material is encountered.
<b>Core logging / storage area</b>	Yes	Within outpost footprint; no separate footprint if co-located	Co-located with temporary outpost	Yes	Unknown	To confirm	Keep within existing disturbed outpost footprint; no separate expansion unless reviewed; avoid new grading or clearing where practicable.
<b>Generator / utility area</b>	Yes	Small, within outpost footprint	Co-located with temporary outpost	Yes	Unknown	To confirm	Keep within disturbed outpost footprint; use containment / drip protection; avoid expansion outside flagged limits.
<b>Toilet / blackwater handling area</b>	Yes	Small, within outpost footprint	Co-located with temporary outpost	Yes	Unknown	To confirm	Keep within flagged outpost footprint; manage waste in accordance with permit conditions and waste plan; no unnecessary new ground disturbance.
<b>Incinerator area</b>	Yes	Small, within outpost footprint	Co-located with temporary outpost	Yes	Unknown	To confirm	Place within disturbed outpost footprint where practicable; maintain setbacks and containment as required; no expansion outside flagged limits.
<b>Greywater / waste handling area</b>	Yes	Small, within outpost footprint unless separate sump required	Co-located with outpost or associated sump location TBD	Yes if within historic outpost area; otherwise unknown	Unknown	Yes / To confirm	Prefer co-location within previously disturbed area; if separate sump or disposal area is required, site after CH review where necessary; minimize excavation; reclaim and contour on closure.
<b>Helicopter landing area</b>	Yes	Existing or lightly reworked landing surface; footprint TBD	Co-located with historic outpost area where practicable	Yes	Unknown	To confirm	Re-use historic disturbed landing area where feasible; avoid new grading outside flagged limits; keep ancillary laydown within disturbed footprint.

<b>Temporary fixed-wing support area(s)</b>	No / Not currently proposed	Not applicable unless separately authorized	Not proposed for current 2026 helicopter-supported program	Not applicable	Not applicable	No, unless later proposed	No fixed-wing support area outside existing authorized infrastructure is currently proposed. If later proposed, location-specific CH review will be undertaken before disturbance.
<b>Temporary fuel cache(s) at drill or support locations</b>	Yes / To confirm	Small, activity-dependent, intended to be minimized and temporary	Final locations TBD; preferentially co-located on existing disturbed pads / staging areas where practicable	Yes / Unknown	Unknown	To confirm	Limit to minimum operational footprint; place on previously disturbed ground where possible; use secondary containment; avoid drainage pathways; remove promptly after use.
<b>Access / hauling routes</b>	No	Not applicable	Not proposed for current 2026 program	Not applicable	Not applicable	No	No overland hauling or ATV / snowmobile access is proposed as part of the current 2026 helicopter-supported program.