



NIRB Uuktuutinga Ihivriuqhikhamut #126399

Geological Study of the Coppermine River Group volcanic rocks, Nunavut

Uuktuutinga Qanurittuq: New

Havaap Qanurittunia: Scientific Research

Uuktuutinga Ublua: Tuesday, March 10, 2026

Period of operation: from 2026-07-06 to 2026-07-31

Havauhikhaq Ikayuqtinga: Marie-Claude Williamson
Natural Resources Canada - Geological Survey of Canada
601 Booth Street
Ottawa ON K1A 0E8
Canada
Hivayautit Nampanga:: 6137999513, Kayumiktukkut Nampanga::

QANURITTUT

Tukhiannaqtunik havaariyuyumayumik uqauhiuyun

Qablunaatitut: See Documents tab for Non-Technical Project Proposal Description_ENG

Uviititut: See Documents tab for Non-Technical Project Proposal Description_FR

Inuktitut: See Documents tab for Non-Technical Project Proposal Description_IK

Inuinnaqtun: See Documents tab for Non-Technical Project Proposal Description_IQ

Personnel

Personnel on site: 6

Days on site: 22

Total Person days: 132

Operations Phase: from 2026-07-06 to 2026-07-31

Hulilukaarutit

Inigiya	Hulilukaarut Qanurittuq	Nunannga Qanurittaakhaanik	Initurlinga qanuritpa	Initurlinga utuqqarnitat unaluuniit Ingilraaqnitat Uyarannguqtut akhuurningga	Qanitqiyauyuq qanitqiamut nunallaat kitulluuniit ahiruqtaiiyainnit nuna
Coppermine Base Camp	Camp	Inuit Owned Surface Lands	Mapped by the Geological Survey of Canada.	Unknown	80 km South of Kugluktuk
Washburn Lake	Sampling sites	Inuit Owned Surface Lands	Mapped by the Geological Survey of Canada.	Unknown	North of Cambridge Bay

Nunaliin Ilauyun, Aviktuqhimayuniitunullu Ikayuuhiarunguyun

Nunauyuq	Atia	Timiuyuq	Upluani Uqaqatigiyaungmata
Kugluktuk	Amanda Dumont, Manager	Kugluktuk Agnoniatit Association	2026-02-19
Kugluktuk	Kevin Niptanatiak, Senior Administrative Officer	Hamlet of Kugluktuk	2026-02-19
Ikaluktuttiak	Jim MacEachern, Chief Administrative Officer	Municipality of Cambridge Bay	2026-02-19
Ikaluktuttiak	James Panioyak, Chairman	Ekaluktutiak Hunters and Trappers Association	2026-02-19
Ikaluktuttiak	Tannis Bolt, Senior Lands Officer	Kitikmeot Inuit Association	2026-02-19

Angiuttauvaktunik

Naunaiqlugu nunanga talvani havauhikhaq ittuq:

Kitikmeot

Angiuttauvaktunik

Munariniqmut Ayuittiaqtuq	Angirutinga Qanurittuq	Tadja Qanurittaakhaanik	Ublua Tuniyauyuq/Uuktuqtuq	Umikvikhaa Ublua
Information is not available				

Project transportation types

Transportation Type	Qanuq Atuqtauniarmangaa	Length of Use
Air	Helicopter transport of field crew from Kugluktuk to Coppermine base camp.	

Project accomodation types

Temporary Camp

Ihuaqutivaluin Atuqtauyukhan

Hanalrutit atuqtaunahuat (ukuallu ikuutat, pampiutainnik, tingmitinik, akhaluutinik, hunaluuniit)

Hanalrutit Qanurittuq	Qaffiuyut	Aktikkulaanga – Qanurittullu	Qanuq Atuqtauniarmangaa
Helicopter	1	NA	Transport of field crew to base camp

Qanurittuq Urhuqyuaq unalu Qayangnaqtut Hunavaluit Aturninga

Qanurittuq urhuqyuaq hunavaluit aturninga:	Urhuqyuaq Qanurittuq	Qaffiuyut qattaryut	Qattaryuk Aktikkulaanga	Atauttimut Qaffiuyut	Ilanga	Qanuq Atuqtauniarmangaa
Gasoline	fuel	1	20	20	Liters	Portable generator for Coppermine base camp

Imaqmik Aturninga

Ubluq qanuraaluk (m3)	Aturumayain imavaluin utiqittagaani qanuq	Atulirumayain imavaluin utiqittagani humi
0	Water for cooking and field crew will be obtained from local streams using buckets	local streams

Iqqakuq

Ikkakunik Munakgiyauyunik

Havauhikhaq Hulilukaarut	Qanurittuq Iqqakut	Ihumagiyauyuq Qanuraaluktut Atuqtait	Qanuq Iqqakuurniarmangaa	Halummaqtirarnirutikhan piyutin
Waste disposal	Qirnarivyaktuq imaq	10 l per day	Disposed of at a single site located at regulatory distance from watercourse	N/A
Waste disposal	Anaagun (inuin anaaguin)	N/A	Portable incinerator	N/A

Avatiliriniqmut Ayurhautingit:

The temporary camp will be set with a rigorous attention to environmental impacts by ensuring that no trace of tents and field equipment remain at the end of the field season. The field crew will follow directives on water usage and waste management as listed in this application. In all our field research, we ensure our staff are properly trained and maintain high safety standards. We are committed to avoiding and reporting any wildlife observations or archeological artefacts or sites found as we work. To support this, the team is seeking to hire a local wildlife monitor to join the team in the field at the Coppermine base camp.

Additional Information

SECTION A1: Project Info

SECTION A2: Allweather Road

SECTION A3: Winter Road

SECTION B1: Project Info

SECTION B2: Exploration Activity

SECTION B3: Geosciences

SECTION B4: Drilling

SECTION B5: Stripping

SECTION B6: Underground Activity

SECTION B7: Waste Rock

SECTION B8: Stockpiles

SECTION B9: Mine Development

SECTION B10: Geology

SECTION B11: Mine

SECTION B12: Mill

SECTION C1: Pits

SECTION D1: Facility

SECTION D2: Facility Construction

SECTION D3: Facility Operation

SECTION D4: Vessel Use

SECTION E1: Offshore Survey

SECTION E2: Nearshore Survey

SECTION E3: Vessel Use

SECTION F1: Site Cleanup

SECTION G1: Well Authorization

SECTION G2: Onland Exploration

SECTION G3: Offshore Exploration

SECTION G4: Rig

SECTION H1: Vessel Use

SECTION H2: Disposal At Sea

SECTION I1: Municipal Development

Qanurittuq Ittunik Avatinga: Avatingalluanga

Qanurittuq Ittunik Avatinga: Inuuhimayunut Avatinga

Qanurittuq Ittunik Avatinga: Inungit-maniliurutingit Avatinga

Miscellaneous Project Information

Naunaiyainiq ukuninga Ayurhautingit unalu Piumayaat Ikikliyuumiutinahuarutit

Tamatkiumayunik Ihuikgutivaktunik

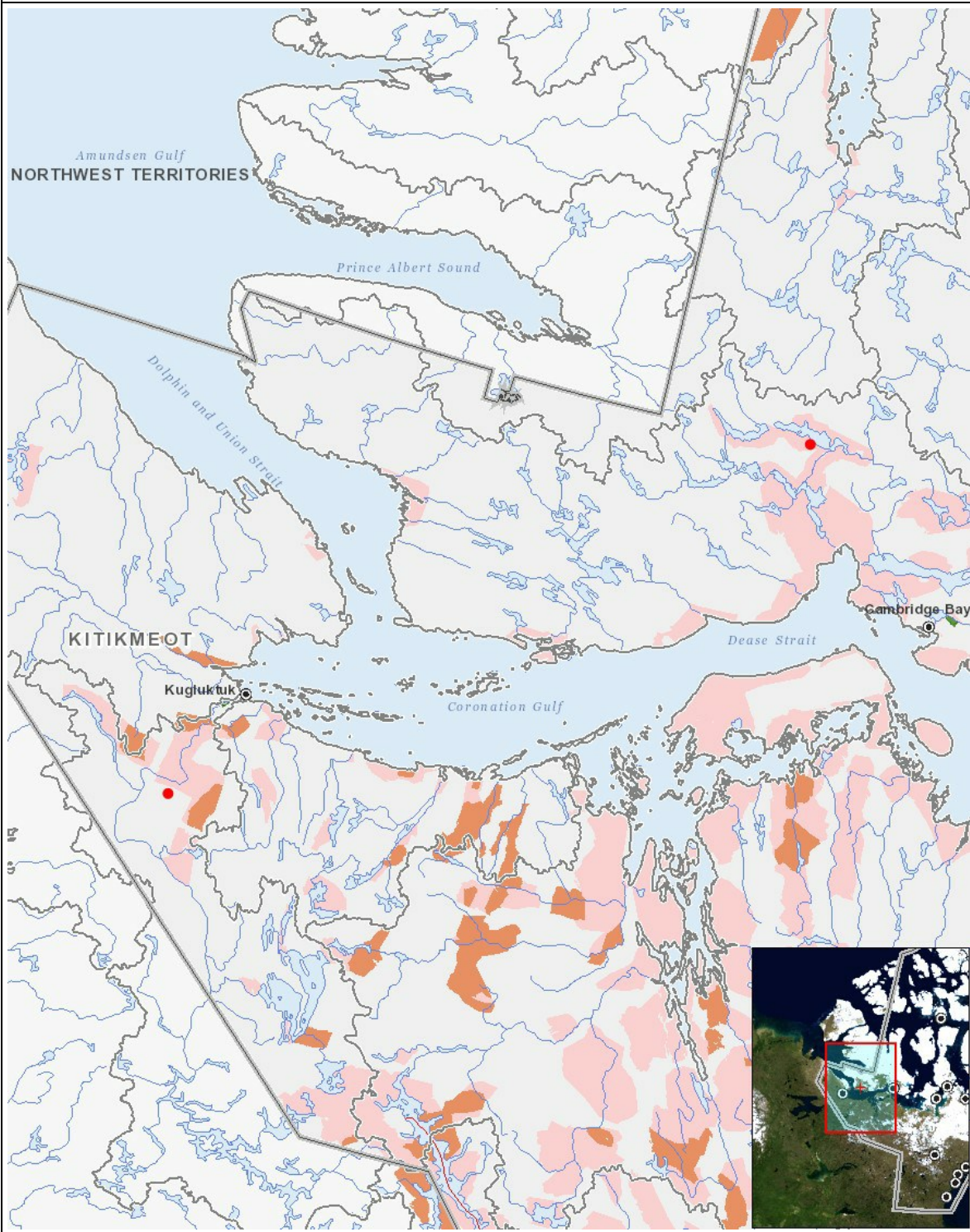
Impacts

Ilitariyauniq Avatiliriniqmut Ayurhauingit

	PHYSICAL	Designated environmental areas	Ground stability	Permafrost	Hydrology / Limnology	Water quality	Climate conditions	Eskers and other unique or fragile landscapes	Surface and bedrock geology	Sediment and soil quality	Tidal processes and bathymetry	Air quality	Noise levels	BIOLOGICAL	Vegetation	Wildlife, including habitat and migration patterns	Birds, including habitat and migration patterns	Aquatic species, incl. habitat and migration/spawning	Wildlife protected areas	SOCIO-ECONOMIC	Archaeological and cultural historic sites	Employment	Community wellness	Community infrastructure	Human health
Havakvinga	-	-	-	-	-	-	-	-	-	-	-	-	-	-	-	-	-	-	-	-	-	-	-	-	-
Aulapkaininnga	-	-	-	-	-	-	-	-	-	-	-	-	-	-	-	-	-	-	-	-	-	-	-	-	-
Piiqtauniq	-	-	-	-	-	-	-	-	-	-	-	-	-	-	-	-	-	-	-	-	-	-	-	-	-

(P = Nakuuyuq, N = Nakuungittut unalu mikhilimaittuq, M = Nakuungittut unalu mikhittaaqtuq, U = Naluyayuq)

Havaariyauyukhamut Nayugaa



List of Project Geometries

1	point	Coppermine Base Camp
2	point	Washburn Lake