

Additional Information

SECTION A1: Project Info

SECTION A2: Allweather Road

SECTION A3: Winter Road

SECTION B1: Project Info

SECTION B2: Exploration Activity

SECTION B3: Geosciences

SECTION B4: Drilling

SECTION B5: Stripping

SECTION B6: Underground Activity

SECTION B7: Waste Rock

SECTION B8: Stockpiles

SECTION B9: Mine Development

SECTION B10: Geology

SECTION B11: Mine

SECTION B12: Mill

SECTION C1: Pits

SECTION D1: Facility

SECTION D2: Facility Construction

SECTION D3: Facility Operation

SECTION D4: Vessel Use

SECTION E1: Offshore Survey

SECTION E2: Nearshore Survey

SECTION E3: Vessel Use

SECTION F1: Site Cleanup

SECTION G1: Well Authorization

SECTION G2: Onland Exploration

SECTION G3: Offshore Exploration

SECTION G4: Rig

SECTION H1: Vessel Use

SECTION H2: Disposal At Sea

SECTION I1: Municipal Development

ᐱᓪᓇ ᐱᓇᐱᓄᓪᓗ ᐱᓄᐱᓄᓪᓗ ᐱᓄᐱᓄᓪᓗ ᐱᓄᐱᓄᓪᓗ

Rocky hills, streams and glaciers (which we will not be traversing).

ᐱᓪᓇ ᐱᓇᐱᓄᓪᓗ ᐱᓄᐱᓄᓪᓗ ᐱᓄᐱᓄᓪᓗ ᐱᓄᐱᓄᓪᓗ

Snow algae, arctic lichen, arctic plant life. Birds and minor mammals.

ᐱᓪᓇ ᐱᓇᐱᓄᓪᓗ ᐱᓄᐱᓄᓪᓗ ᐱᓄᐱᓄᓪᓗ ᐱᓄᐱᓄᓪᓗ

This is a remote location with no nearby human settlements or communities.

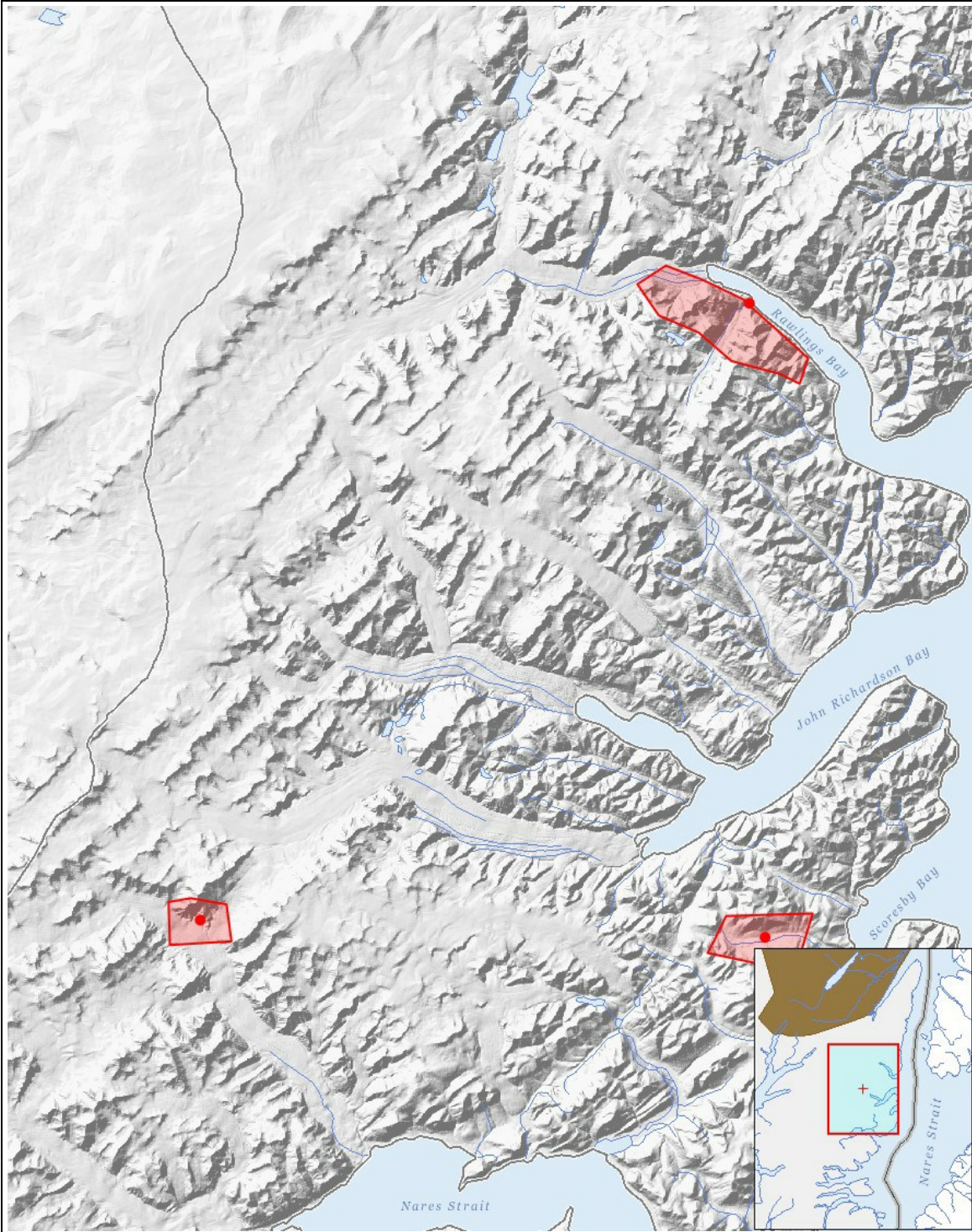
Miscellaneous Project Information

ᐱᓄᐱᓄᓪᓗ ᐱᓄᐱᓄᓪᓗ ᐱᓄᐱᓄᓪᓗ ᐱᓄᐱᓄᓪᓗ

There will be a strict zero-footprint policy. All materials brought in will be packed out. Minimal surface sampling of small golf-ball sized rock samples will be undertaken however this will be of zero impact to the environment.

Cumulative Effects

None that can be anticipated.



List of Project Geometries

1	polygon	Nunatak Camp and field area
2	polygon	Scoresby Camp and field area
3	polygon	Alternate field area at Radmore Harbor
4	point	Nunatak Camp
5	point	Scoresby Camp
6	point	Alternate Camp at Radmore Harbor