



## **NIRB Uuktuutinga Ihivriuqhikhamut #126434**

### **Co-evolution of life and environment across the Ediacaran-Cambrian boundary in Northeastern Ellesmere Island**

**Uuktuutinga Qanurittuq:** New

**Havaap Qanurittunia:** Scientific Research

**Uuktuutinga Ublua:** Wednesday, April 8, 2026

**Period of operation:** from 2026-07-01 to 2026-08-17

**Havauhikhaq  
Ikayuqtinga:** Peter Crockford  
Carleton University  
1125 Colonel By Drive  
OTTAWA ON K1S 5B6  
Canada  
Hivayautit Nampanga:: 3432048228, Kayumiktukkut Nampanga::





## Hulilukaarutit

Inigiya	Hulilukaarut Qanurittuq	Nunangga Qanurittaakhaanik	Initurlinga qanuritpa	Initurlinga utuqqarnitat unaluuniit Ingilraaqnitat Uyarannuqtut akhuurningga	Qanitqiyauyuq qanitqiamut nunallaat kitulluuniit ahiruqtaliyainnit nuna
Scoresby Camp and field area	Scientific/International Polar Year Research	Crown	Geologic mapping by the Geological Survey of Canada in the 1990s	The specific sites are of Ediacaran and Cambrian age however fossils are unknown.	The closest settlement is Grise Fjord which is ≈450 km away from this study location.
Alternate field area at Radmore Harbor	Scientific/International Polar Year Research	Crown	Geologic mapping by the Geological Survey of Canada in the 1990s	The specific sites are of Ediacaran and Cambrian age however fossils are unknown.	The closest settlement is Grise Fjord ≈450 km from this location.
Nunatak Camp and field area	Scientific/International Polar Year Research	Crown	Geologic mapping by the Geological Survey of Canada in the 1990s	The specific sites are of Ediacaran and Cambrian age however fossils are unknown.	The closest settlement is Grise Fjord which is ≈450 km away from this study location.

## Nunaliin Ilauyun, Aviktuqhimayuniitunullu Ikayuuhiarunguyun

Nunauyuq	Atia	Timiuyuq	Upluani Uqaqatigiyaungmata
Information is not available			

# Angiuttauvaktunik

Naunaiqlugu nunanga talvani havauhikhaq ittuq:

North Baffin

## Angiuttauvaktunik

Munariniqmut Ayuittiaqtuq	Angirutinga Qanurittuq	Tadja Qanurittaakhaanik	Ublua Tuniyauyuq/Uuktuqtuq	Umikvikhaa Ublua
Nunavut Planning Commission	The NPC has completed its review of this project and it conforms to the Northern Baffin Regional Land Use Plan. The proponent has undertaken to comply with the applicable conformity requirements of appendix C, H, and I of the NBRLUP.	Active	2026-03-10	
Nunavunmi Ihivriunniqmut Timiqutigiyanga	Everything is in good order however the NRI is awaiting approval from the NIRB	Applied, Decision Pending		

## Project transportation types

Transportation Type	Qanuq Atuqtauniarmangaa	Length of Use
Air	Fixed wing plane from Resolute to Eureka and then Helicopter transport from Eureka to and from field areas.	

## Project accomodation types

Temporary Camp

# Ihuaqutivaluin Atuqtauyukhan

Hanalrutit atuqtaunahuat (ukuallu ikuutat, pampiutainnik, tingmitinik, akhaluutinik, hunaluuniit)

Hanalrutit Qanurittuq	Qaffiuyut	Aktikkulaanga – Qanurittullu	Qanuq Atuqtauniarmangaa
Rock Hammer	6	33 cm	To sample golf ball sized scientific research rock samples - carbonate, shale.
Helicopter	1	40 ft	For transportation to and from field camps

## Qanurittuq Urhuqyuaq unalu Qayangnaqtut Hunavaluit Aturningga

Qanurittuq urhuqyuaq hunavaluit aturningga:	Urhuqyuaq Qanurittuq	Qaffiuyut qattaryut	Qattaryuk Aktikkulaanga	Atauttimut Qaffiuyut	Ilanga	Qanuq Atuqtauniarmangaa
Aviation fuel	fuel	8	200	1600	Liters	To power helicopter
Other	fuel	3	1	3	Liters	cooking fuel - white gas

## Imaqmik Aturningga

Ubluq qanuraaluk (m3)	Aturumayain imavaluin utiqittagaani qanuq	Atulirumayain imavaluin utiqittagani humi
0	Safe manual collection from streams and ice melt.	We will collect water near camps.

# Iqqakuq

## Ikkakunik Munakgiyauyunik

Havauhikhaq Hulilukaarut	Qanurittuq Iqqakut	Ihumagiyauyuq Qanuraaluktut Atuqtait	Qanuq Iqqakuurniarmangaa	Halummaqtirarnirutikhan piyutin
Camp	Ikulalimanngittun iqqakuuvaluin	3 kg	We will pack this out of camps and will dispose of this in a municipale dumpster in Ottawa	N/A
Camp	Other, Used cooking fuel cans	3 1L cans	We will pack out empty cans which will be disposed of properly at a PCSP facility	N/A
Camp	Anaagun (inuin anaaguin)	22.5 kg	All waste of this nature will be packed out of camp in sealed buckets lined with materials designed for this purpose.	N/A

### Avatiliriniqmut Ayurhauingit:

This is a purely scientific expedition which will require minimal surface sampling in two locations of golf-ball sized rock samples taken from the surface with a rock hammer and stored in sample bags. Camps will have a strict zero-footprint policy which will entail all generated waste and materials to be packed out at the end of the campaign. Due to surface weathering, sampling marks will be removed within several years.

# **Additional Information**

**SECTION A1: Project Info**

**SECTION A2: Allweather Road**

**SECTION A3: Winter Road**

**SECTION B1: Project Info**

**SECTION B2: Exploration Activity**

**SECTION B3: Geosciences**

**SECTION B4: Drilling**

**SECTION B5: Stripping**

**SECTION B6: Underground Activity**

**SECTION B7: Waste Rock**

**SECTION B8: Stockpiles**

**SECTION B9: Mine Development**

**SECTION B10: Geology**

**SECTION B11: Mine**

**SECTION B12: Mill**

**SECTION C1: Pits**

**SECTION D1: Facility**

**SECTION D2: Facility Construction**

**SECTION D3: Facility Operation**

**SECTION D4: Vessel Use**

**SECTION E1: Offshore Survey**

**SECTION E2: Nearshore Survey**

**SECTION E3: Vessel Use**

## **SECTION F1: Site Cleanup**

## **SECTION G1: Well Authorization**

## **SECTION G2: Onland Exploration**

## **SECTION G3: Offshore Exploration**

## **SECTION G4: Rig**

## **SECTION H1: Vessel Use**

## **SECTION H2: Disposal At Sea**

## **SECTION I1: Municipal Development**

### **Qanurittuq Ittunik Avatinga: Avatingalluanga**

Rocky hills, streams and glaciers (which we will not be traversing).

### **Qanurittuq Ittunik Avatinga: Inuuhimayunut Avatinga**

Snow algae, arctic lichen, arctic plant life. Birds and minor mammals.

### **Qanurittuq Ittunik Avatinga: Inungit-maniliurutingit Avatinga**

This is a remote location with no nearby human settlements or communities.

## **Miscellaneous Project Information**

### **Naunaiyainiq ukuninnga Ayurhautingit unalu Piumayaat Ikikliyuumiutinahuarutit**

There will be a strict zero-footprint policy. All materials brought in will be packed out. Minimal surface sampling of small golf-ball sized rock samples will be undertaken however this will be of zero impact to the environment.

### **Tamatkiumayunik Ihuikgutivaktunik**

None that can be anticipated.

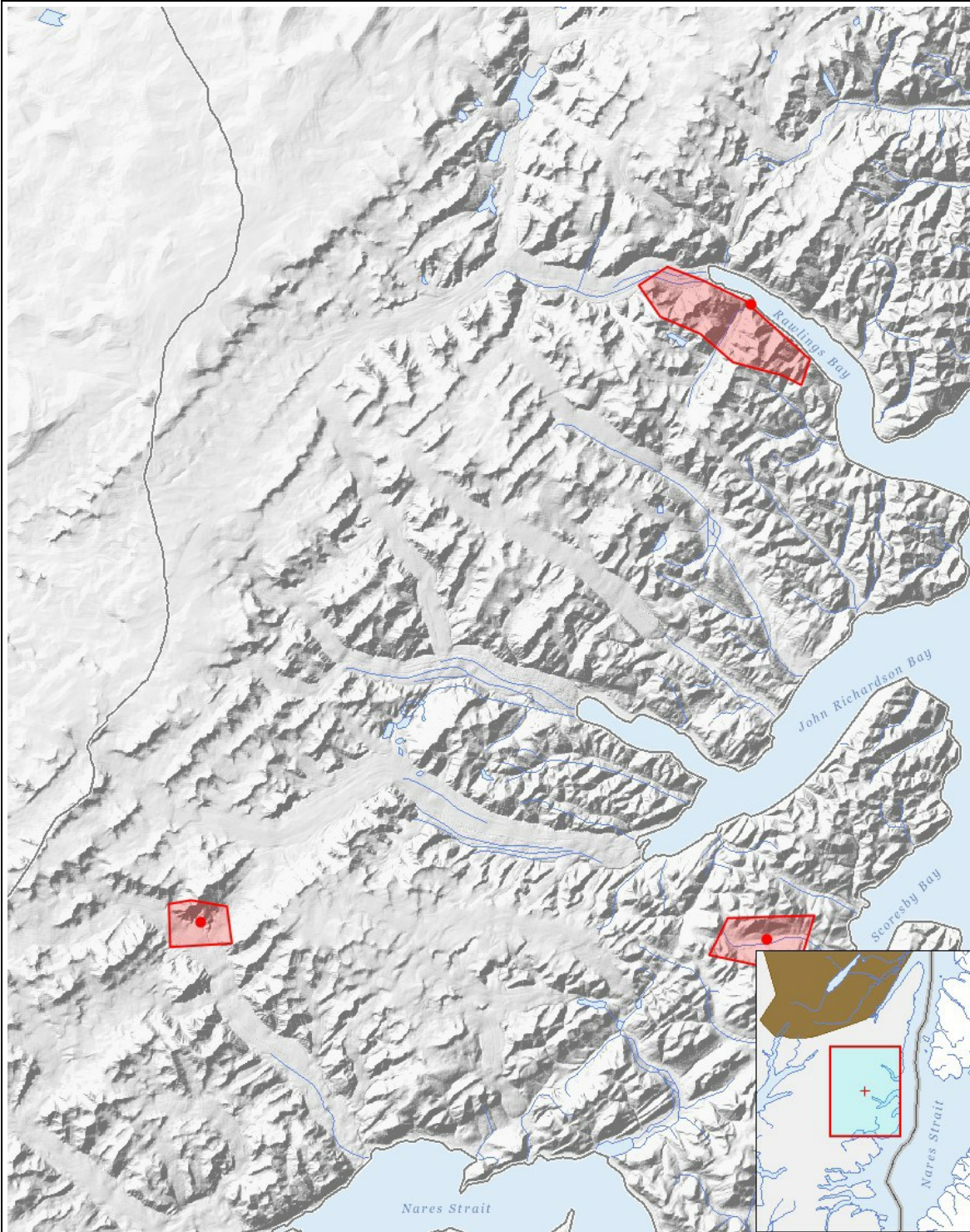
# Impacts

## Ilitariyauniq Avatiliriniqmut Ayurhauingit

	PHYSICAL	Designated environmental areas	Ground stability	Permafrost	Hydrology / Limnology	Water quality	Climate conditions	Eskers and other unique or fragile landscapes	Surface and bedrock geology	Sediment and soil quality	Tidal processes and bathymetry	Air quality	Noise levels	BIOLOGICAL	Vegetation	Wildlife, including habitat and migration patterns	Birds, including habitat and migration patterns	Aquatic species, incl. habitat and migration/spawning	Wildlife protected areas	SOCIO-ECONOMIC	Archaeological and cultural historic sites	Employment	Community wellness	Community infrastructure	Human health
<b>Havakvinga</b>	-	-	-	-	-	-	-	-	-	-	-	-	-	-	-	-	-	-	-	-	-	-	-	-	-
<b>Aulapkaininnga</b>	-	-	-	-	-	-	-	-	-	-	-	-	-	-	-	-	-	-	-	-	-	-	-	-	-
<b>Piiqtauniq</b>	-	-	-	-	-	-	-	-	-	-	-	-	-	-	-	-	-	-	-	-	-	-	-	-	-

(P = Nakuuyuq, N = Nakuungittut unalu mikhilimaittuq, M = Nakuungittut unalu mikhittaaqtuq, U = Naluyayuq)

# Havaariyuyukhamut Nayugaa



## List of Project Geometries

- |   |         |  |
|---|---------|--|
| 1 | polygon | Nunatak Camp and field area            |
| 2 | polygon | Scoresby Camp and field area           |
| 3 | polygon | Alternate field area at Radmore Harbor |
| 4 | point   | Nunatak Camp                           |
| 5 | point   | Scoresby Camp                          |
| 6 | point   | Alternate Camp at Radmore Harbor       |