

Activities

| Location | Activity Type | Land Status | Site history | Site archaeological or paleontological value | Proximity to the nearest communities and any protected areas |
|---|--|-------------------------------|---|--|---|
| Central Baffin Camp | Camp | Crown | The Central Baffin Camp site was operated by the Geological Survey of Canada in the early 2000s for fieldwork conducted west of the current project area. | Unknown | The Central Baffin Camp is approximately 240 km southwest of Clyde River. |
| Central Baffin Geoscience Program area encompassing NTS map sheets 027C12 and 027C05. | Scientific/International Polar Year Research | Inuit Owned Surface Lands | The area has seen sporadic mineral exploration and scientific research, beginning in the 1950s. Notably, the area contains rare-metal pegmatites of the Foxe Field and several occurrences of base and precious metals that are not currently well constrained. | Unknown | The field area is located approximately 150 km southwest of Clyde River. Northern portions of the field area are located within the Agguttinni Territorial Park. The area contains Surface (CR-10) and Sub-surface (CR-27) IOL in addition to Crown Land. |
| Central Baffin Geoscience Program area encompassing NTS map sheets 027C12 and 027C05. | Scientific/International Polar Year Research | Inuit Owned Sub-Surface Lands | The area has seen sporadic mineral exploration and scientific research, beginning in the 1950s. Notably, the area contains rare-metal pegmatites of the Foxe Field and several occurrences of base and precious | Unknown | The field area is located approximately 150 km southwest of Clyde River. Northern portions of the field area are located within the Agguttinni Territorial Park. The area contains Surface (CR-10) and Sub-surface (CR-27) |

| | | | | | |
|---|--|-------|---|---------|---|
| | | | metals that are not currently well constrained. | | IOL in addition to Crown Land. |
| Central Baffin Geoscience Program area encompassing NTS map sheets 027C12 and 027C05. | Scientific/International Polar Year Research | Crown | The area has seen sporadic mineral exploration and scientific research, beginning in the 1950s. Notably, the area contains rare-metal pegmatites of the Foxe Field and several occurrences of base and precious metals that are not currently well constrained. | Unknown | The field area is located approximately 150 km southwest of Clyde River. Northern portions of the field area are located within the Agguttinni Territorial Park. The area contains Surface (CR-10) and Sub-surface (CR-27) IOL in addition to Crown Land. |

Community Involvement & Regional Benefits

| Community | Name | Organization | Date Contacted |
|-------------|-------------------|---------------------------------|----------------|
| Clyde River | Billy Palluq | Municipality of Clyde River | 2026-04-08 |
| Clyde River | Jaysie Tigullaraq | Office Manager, Clyde River HTO | 2026-04-28 |

Authorizations

Indicate the areas in which the project is located:

North Baffin
South Baffin

Authorizations

| Regulatory Authority | Authorization Description | Current Status | Date Issued / Applied | Expiry Date |
|--|--|---------------------------|-----------------------|-------------|
| Crown-Indigenous Relations and Northern Affairs Canada | Class B Land Use Permit for activities occurring on Crown Lands | Applied, Decision Pending | | |
| Government of Nunavut, Department of Environment | Nunavut Territorial Parks Use Permit for activities occurring in Agguttinni Territorial Park. | Applied, Decision Pending | | |
| Government of Nunavut, Department of Environment | Nunavut Territorial Parks Firearms Permit. Carrying weapons for self defense purposes. | Not Yet Applied | | |
| Government of Nunavut, Nunavut Research Institute | Nunavut Research License. Scientific Research performed on the land in the study area. | Applied, Decision Pending | | |
| Nunavut Water Board | Authorization for Approval for the use of water or deposit of waste without a license | Applied, Decision Pending | | |
| Qikiqtani Inuit Association | Land Use Permit II for proposed research activities taking place on IOL packages CR-10 and CR-27 | Applied, Decision Pending | | |
| Nunavut Planning Commission | Land use plan conformity determination issued. NPC File #151175 | Active | 2026-04-30 | |

Project transportation types

| Transportation Type | Proposed Use | Length of Use |
|---------------------|--|---------------|
| Air | Camp mobilization and demobilization by aircraft. Travel to and from the field area by helicopter. | |
| Land | Field activities will be performed on foot. | |

Project accommodation types

Temporary Camp

Material Use

Equipment to be used (including drills, pumps, aircraft, vehicles, etc)

| Equipment Type | Quantity | Size - Dimensions | Proposed Use |
|--------------------|----------|-------------------|--|
| Twin Otter | 1 | Plane | Supply flights and crew mobilization. |
| Long Ranger | 1 | Helicopter | Travel to and from field area. |
| Electric Generator | 1 | 60 kg | Powering camp |
| Water pump | 2 | 22 kg | Supplying water for personal use at camp |

Detail Fuel and Hazardous Material Use

| Detail fuel material use: | Fuel Type | Number of containers | Container Capacity | Total Amount | Units | Proposed Use |
|---------------------------|-----------|----------------------|--------------------|--------------|--------|---------------------------------|
| Aviation fuel | fuel | 60 | 208 | 12480 | Liters | For fueling helicopter |
| Diesel | fuel | 15 | 208 | 3120 | Liters | Providing energy to camp. |
| Gasoline | fuel | 4 | 208 | 832 | Liters | Powering generators and pumps |
| Propane | fuel | 12 | 20 | 240 | Lbs | Heating, refrigeration, cooking |

Water Consumption

| Daily amount (m3) | Proposed water retrieval methods | Proposed water retrieval location |
|-------------------|---|---|
| 1 | Less than 1m ³ of water will be retrieved by gas powered pump per day. | Water will be drawn from a nearby lake. |

Waste

Waste Management

| Project Activity | Type of Waste | Projected Amount Generated | Method of Disposal | Additional treatment procedures |
|------------------|------------------------|----------------------------|--|---------------------------------|
| Camp | Combustible wastes | <1m ³ | Combustible waste will be disposed of via portable incinerator, located at the camp site. | N/A |
| Camp | Greywater | <1m ³ | Solids will be filtered out of grey water before disposal in a hand-dug pit. Hand-dug pits will be placed in sandy, well-drained soil located greater than 50m from the high-water mark of all nearby waterbodies. | N/A |
| Camp | Non-Combustible wastes | <1m ³ | Non-combustible waste will be packed out of the field area and removed from the camp site at the conclusion of field work and transported to Iqaluit for disposal. Empty fuel drums will be crushed in Iqaluit and shipped south for recycling. A leave no trace policy will be followed to the greatest possible extent possible. | N/A |
| Camp | Sewage (human waste) | <1m ³ | Human waste will be disposed via burial in a pit latrine. Hand-dug pits will be placed in sandy, well-drained soil located greater than 50m from the high-water mark of all nearby waterbodies. | N/A |

Environmental Impacts:

There is minimal potential for the work to harm or disrupt wildlife and the environment. Fieldwork activities will be performed on foot and be assisted by helicopter. To mitigate potential harm to wildlife, helicopters will not be flown at low altitudes and wildlife will be avoided at all costs while in the field. If an animal is

spotted at a point of interest, the point will be avoided until such time the animal has left the area and it may be accessed without risk of contact. The establishment of a temporary field camp outside of the field area as well as sampling activities may pose slight disruption to the environment. Camp will be constructed at a distance from local water sources, and waste will be packed out upon the completion of fieldwork. Rock, till and water samples will be removed from the environment using a hammer and chisel. When samples are collected, care will be taken to prevent unnecessary damage to outcrop and the land will be returned to as close a condition as it was found. Some samples of weathered material will be collected using a shovel. If holes are dug to sample material, they will be infilled. Waters will be filtered into vessels to remove particulate matter. Surface vegetation will be removed during sampling and returned to its original location after samples are collected.

Additional Information

SECTION A1: Project Info

SECTION A2: Allweather Road

SECTION A3: Winter Road

SECTION B1: Project Info

SECTION B2: Exploration Activity

SECTION B3: Geosciences

SECTION B4: Drilling

SECTION B5: Stripping

SECTION B6: Underground Activity

SECTION B7: Waste Rock

SECTION B8: Stockpiles

SECTION B9: Mine Development

SECTION B10: Geology

SECTION B11: Mine

SECTION B12: Mill

SECTION C1: Pits

SECTION D1: Facility

SECTION D2: Facility Construction

SECTION D3: Facility Operation

SECTION D4: Vessel Use

SECTION E1: Offshore Survey

SECTION E2: Nearshore Survey

SECTION E3: Vessel Use

SECTION F1: Site Cleanup

SECTION G1: Well Authorization

SECTION G2: Onland Exploration

SECTION G3: Offshore Exploration

SECTION G4: Rig

SECTION H1: Vessel Use

SECTION H2: Disposal At Sea

SECTION I1: Municipal Development

Description of Existing Environment: Physical Environment

The bedrock geology of the Central Baffin Island area consists of igneous rocks of the Archean Rae Craton, Paleoproterozoic sedimentary rocks of the Piling Group, Paleoproterozoic granites, and Neoproterozoic diabase dykes of the Franklin swarm. With the exception of diabase dykes, the area was deformed during the Himalayas-scale Trans-Hudson Orogeny. The Barnes Ice Cap, a remnant of the Laurentide Ice Sheet, is located along the northwestern margin of the field area. Glacially-derived cover including kames, eskers, moraines, and associated fluvial and lacustrine deposits drape over bedrock. Permafrost is continuous throughout the study area.

Description of Existing Environment: Biological Environment

The biological environment is typical tundra of the Northern Arctic ecozone. There are over 100 documented species of flora on Baffin Island, the majority of which being distributed throughout circumpolar region. Flora is represented by flowering plants, sedges and grasses. Mosses and lichens are a significant food source for animals. Many species of migratory bird pass through the area in the summer. Barren-ground caribou, Arctic fox, Arctic hare, lemming, and polar bear migrate through, or live year-round in the region.

Description of Existing Environment: Socio-economic Environment

The field area is located approximately 150 km from the nearest community, Clyde River. The community will be a source of Inuit employment for wildlife monitors / camp aids.

Miscellaneous Project Information

Identification of Impacts and Proposed Mitigation Measures

Project-related activities are anticipated to have minimal impact on the environment. Regardless of activity, a leave no trace approach will be employed. Specific impacts selected in the table are mitigatable and will be discussed in the context of research and camp activities. A temporary campsite will be constructed for the duration of the field work. The erection of tents and storage of equipment and fuel supplies may disturb local vegetation and wildlife in the area surrounding the campsite. The operation of generators and helicopters will increase noise. As such, loud equipment will only be operated when required and quiet hours will be established for the camp site. Waste such as grey water and human sewage will be disposed of in hand dug pits, located in well-drained soil located greater than 50m from the high-water mark of all nearby water bodies. Grey water will be filtered prior to disposal and all hand dug pits will be infilled. Fuel storage has the potential to impact local water quality. To mitigate this impact, fuel will be stored in berms

and inspected regularly. A fuel spill contingency plan has been developed and is attached as a standalone document. At the conclusion of fieldwork, all supplies and non-combustible wastes will be mobilised out of the area. Research activities will be performed on foot and assisted by helicopter. To mitigate impacts to wildlife, helicopters will not be flown at low altitudes and wildlife will be avoided at all costs while in the field. If an animal is spotted at a point of interest, the point will be avoided until such time the animal has left the area and it may be accessed without risk of contact. Research activities will consist of collecting geological materials. These materials, including rock and till will be removed permanently from the study area. Select surface water samples may be removed permanently as well to support geological research activities. Samples will be collected by hand using rock hammers or shovels. Ground disturbed during sampling will be returned to as close to its original state as possible. Part of the field area is within Agguttinni Territorial Park. As with the other research locations, field areas within the park will be accessed by helicopter and fieldwork will be performed on foot. Up to three wildlife monitors /camp aids (WMCA) will be employed to support the project. WMCA jobs for the project will be circulated to the Clyde River HTO. Presentations will be created for public dissemination in English and translated to Inuktitut. Results from this work will be shared with the community of Clyde River in a timely manner.

Cumulative Effects

Permanent removal of rock and till samples and select water samples for scientific study.

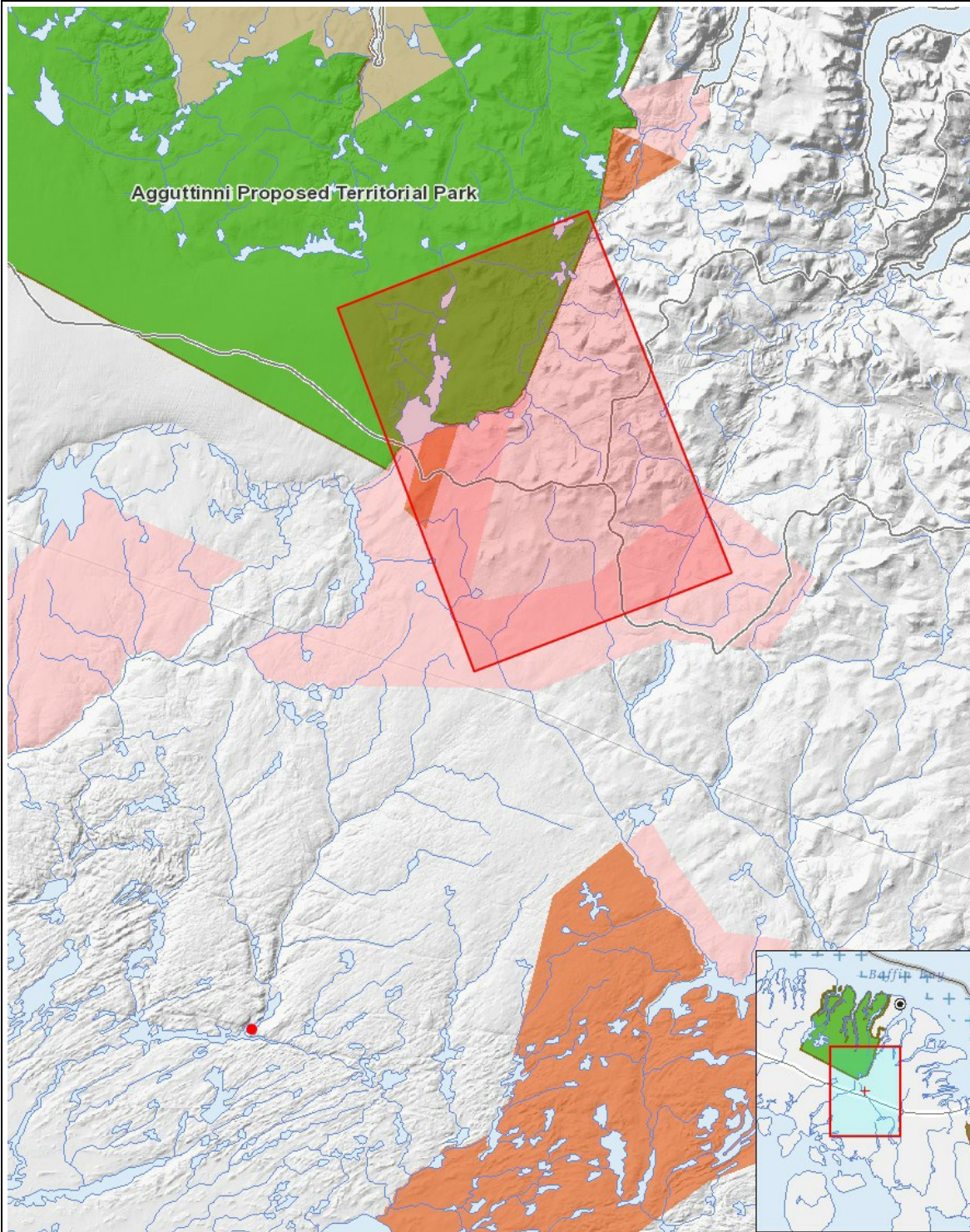
Impacts

Identification of Environmental Impacts

| | PHYSICAL | Designated environmental areas | Ground stability | Permafrost | Hydrology / Limnology | Water quality | Climate conditions | Eskers and other unique or fragile landscapes | Surface and bedrock geology | Sediment and soil quality | Tidal processes and bathymetry | Air quality | Noise levels | BIOLOGICAL | Vegetation | Wildlife, including habitat and migration patterns | Birds, including habitat and migration patterns | Aquatic species, incl. habitat and migration/spawning | Wildlife protected areas | SOCIO-ECONOMIC | Archaeological and cultural historic sites | Employment | Community wellness | Community infrastructure | Human health |
|--|----------|--------------------------------|------------------|------------|-----------------------|---------------|--------------------|---|-----------------------------|---------------------------|--------------------------------|-------------|--------------|------------|------------|--|---|---|--------------------------|----------------|--|------------|--------------------|--------------------------|--------------|
| Construction | - | - | - | - | - | - | - | - | - | - | - | - | - | - | - | - | - | - | - | - | - | - | - | - | - |
| Operation | | | | | | | | | | | | | | | | | | | | | | | | | |
| Camp | | - | - | - | - | - | M | - | - | - | - | - | - | M | | M | M | M | M | - | | - | P | - | - |
| Scientific/International Polar Year Research | | M | - | M | - | M | - | M | M | M | - | - | - | M | | M | M | M | M | - | U | P | U | - | P |
| Decommissioning | | | | | | | | | | | | | | | | | | | | | | | | | |
| - | - | - | - | - | - | - | - | - | - | - | - | - | - | - | - | - | - | - | - | - | - | - | - | - | - |

(P = Positive, N = Negative and non-mitigatable, M = Negative and mitigatable, U = Unknown)

Project Location



List of Project Geometries

- | | |
|-----------|---|
| 1 polygon | Central Baffin Geoscience Program area encompassing NTS map sheets 027C12 and 027C05. |
| 2 point | Central Baffin Camp |