



ᓄᓇᓂᓯ ᐃᓚᑎᑦᑎᐱᓐᓂᑦ ᑲᑎᑎᐱᓐᓯᑦᑎᑦ ᐃᑲᓯᑦᑎᑦ ᑦᑭᑦᑭᑦᑎᑦᑎᑦ #126448

Central Baffin Geoscience Program

ᐃᑲᓯᑦᑎᑦᑎᑦᑎᑦ ᑦᓄᓄᐱᑦᑎᑦᑎᑦ: New

ᐱᑦᑎᑦᑎᑦᑎᑦᑎᑦᑎᑦ ᑦᓄᓄᐱᑦᑎᑦᑎᑦ: Scientific Research

ᐅᑦᑎᑦᑎᑦ ᐃᑲᓯᑦᑎᑦᑎᑦᑎᑦᑎᑦ: Friday, May 8, 2026

Period of operation: from 2026-07-19 to 2026-08-15

ᐱᑦᑎᑦᑎᑦᑎᑦᑎᑦᑎᑦ: Tavis Enno
Canada-Nunavut Geoscience Office
110-1106 Iqaluktuutiak Dr.
Iqaluit NU X0A 3H0
Canada
ᐅᑦᑎᑦᑎᑦ: 867-222-3178, ᑦᑲᑦᑎᑦ:

		occurrences of base and precious metals that are not currently well constrained.	the field area are located within the Agguttinni Territorial Park. The area contains Surface (CR-10) and Sub-surface (CR-27) IOL in addition to Crown Land.
--	--	--	---

ᓄᓇᓕᓂᓪᓗ ᐃᓕᓂᓕᓂᓪᓗ ᓄᓇᓕᓂᓪᓗ ᐃᓕᓂᓕᓂᓪᓗ ᐃᓕᓂᓕᓂᓪᓗ ᐃᓕᓂᓕᓂᓪᓗ

ᓄᓇᓕᓂᓪᓗ	ᐃᓕᓂᓪᓗ	ᓂᓕᓂᓪᓗᐃᓕᓂᓪᓗ	ᓂᓕᓂᓪᓗ ᓂᓕᓂᓪᓗᐃᓕᓂᓪᓗ
Clyde River	Billy Palluq	Municipality of Clyde River	2026-04-08
Clyde River	Jaysie Tigullaraq	Office Manager, Clyde River HTO	2026-04-28

flown at low altitudes and wildlife will be avoided at all costs while in the field. If an animal is spotted at a point of interest, the point will be avoided until such time the animal has left the area and it may be accessed without risk of contact. The establishment of a temporary field camp outside of the field area as well as sampling activities may pose slight disruption to the environment. Camp will be constructed at a distance from local water sources, and waste will be packed out upon the completion of fieldwork. Rock, till and water samples will be removed from the environment using a hammer and chisel. When samples are collected, care will be taken to prevent unnecessary damage to outcrop and the land will be returned to as close a condition as it was found. Some samples of weathered material will be collected using a shovel. If holes are dug to sample material, they will be infilled. Waters will be filtered into vessels to remove particulate matter. Surface vegetation will be removed during sampling and returned to its original location after samples are collected.

Additional Information

SECTION A1: Project Info

SECTION A2: Allweather Road

SECTION A3: Winter Road

SECTION B1: Project Info

SECTION B2: Exploration Activity

SECTION B3: Geosciences

SECTION B4: Drilling

SECTION B5: Stripping

SECTION B6: Underground Activity

SECTION B7: Waste Rock

SECTION B8: Stockpiles

SECTION B9: Mine Development

SECTION B10: Geology

SECTION B11: Mine

SECTION B12: Mill

SECTION C1: Pits

SECTION D1: Facility

SECTION D2: Facility Construction

SECTION D3: Facility Operation

SECTION D4: Vessel Use

SECTION E1: Offshore Survey

SECTION E2: Nearshore Survey

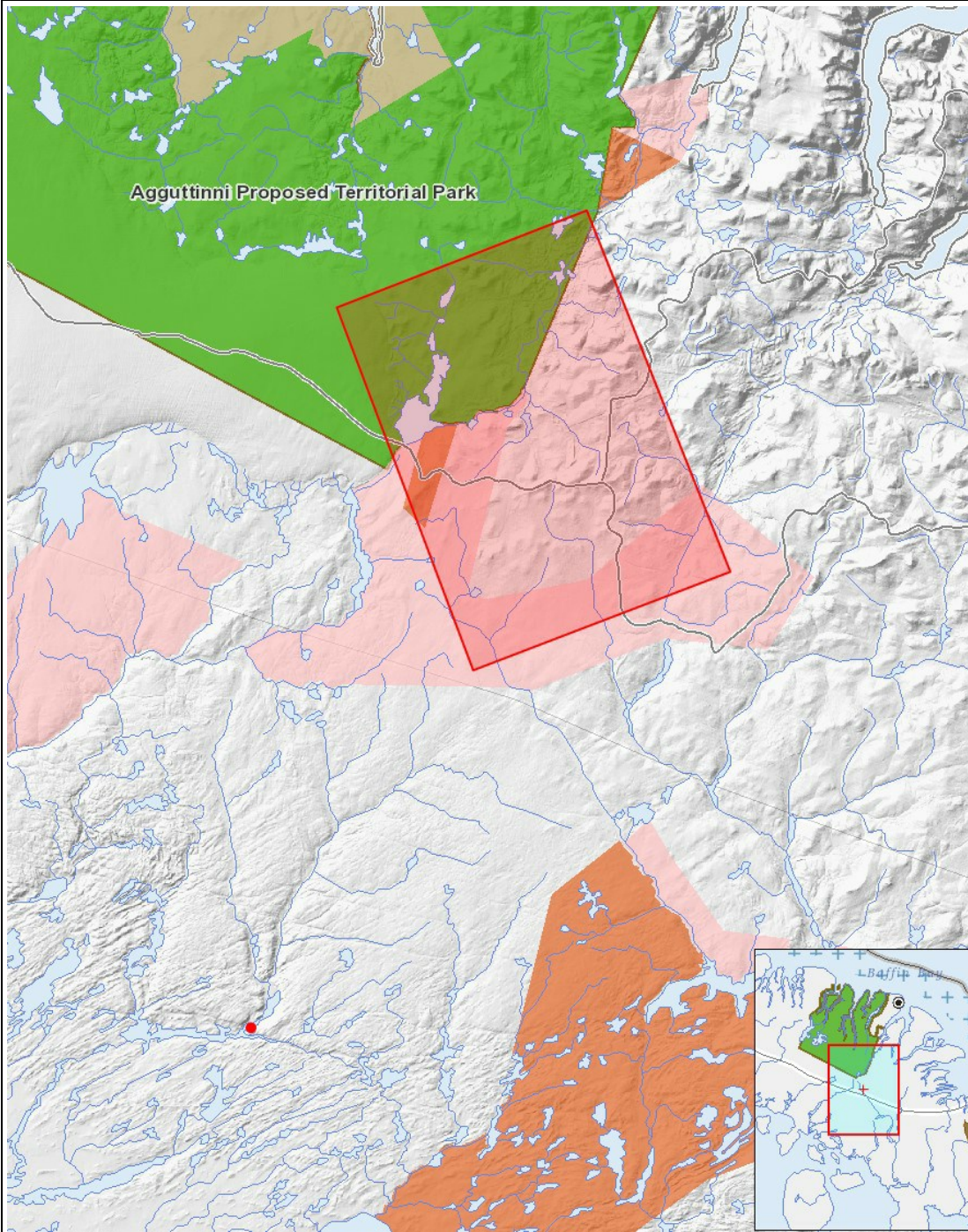
SECTION E3: Vessel Use

SECTION F1: Site Cleanup

with the other research locations, field areas within the park will be accessed by helicopter and fieldwork will be performed on foot. Up to three wildlife monitors /camp aids (WMCA) will be employed to support the project. WMCA jobs for the project will be circulated to the Clyde River HTO. Presentations will be created for public dissemination in English and translated to Inuktitut. Results from this work will be shared with the community of Clyde River in a timely manner.

Cumulative Effects

Permanent removal of rock and till samples and select water samples for scientific study.



List of Project Geometries

- 1 polygon Central Baffin Geoscience Program area encompassing NTS map sheets 027C12 and 027C05.
- 2 point Central Baffin Camp

