



## **Wishbone-Malley Project**

**2013 Annual Report For**

***AANDC Land Use License N2012C0003***

March 2014

## **Contents**

1.0	INTRODUCTION .....	3
1.1	Sabina Environmental Policy .....	3
1.2	Site Location and Description .....	3
2.0	SUMMARY OF ACTIVITIES .....	4
3.0	2014 WORK PLAN .....	4
4.0	PROJECT TERMS AND CONDITIONS .....	6

## **1.0 INTRODUCTION**

This report summarizes 2013 activities completed by Sabina related to land use permit #N2012C0003.

### **1.1 Sabina Environmental Policy**

Sabina Gold & Silver Corp. takes very seriously its responsibility to act as a steward of the environment. In meeting this responsibility, Sabina acts to:

- Ensure that we design our activities and operate in compliance with all environmental regulations to minimize our impact on the environment.
- Promote responsibility and accountability of managers, employees and contractors to the protection of the environment, and make environmental performance an important factor in the management/contractor review process.
- Provide resources, personnel and training to enhance the capacity of management, employees and contractors to implement programs and policies to protect the environment.
- Communicate openly with employees, contractors, local stakeholders and government on our environmental protection and sustainability programs and performance and address concerns pertaining to potential hazards and impacts.
- Promote the development and implementation of systems and technologies to minimize risks to the environment.
- Establish and maintain appropriate emergency response plans for all activities and facilities
- Maintain a self-monitoring program at each facility to ensure compliance and to proactively address plans to correct potential deficiencies.
- Work cooperatively with government agencies, local communities and contractors to develop and enhance systems and technologies to improve environmental and sustainability practices.
- Encourage all employees, contractors or stakeholders to report to management any known or suspicious departure from this policy or its related procedures.

### **1.2 Site Location and Description**

The Wishbone – Malley exploration project is located in western Nunavut, south of Bathurst Inlet within the Slave Structural Province. It lies approximately 525 kilometres northeast of Yellowknife and 400 kilometres south of Cambridge Bay, NU (Figure 1). The project area is within the zone of continuous permafrost. There are no camps within the Wishbone – Malley exploration project area.

Regionally this exploration area lies within the Takijug Lake Uplands ecoregion, which covers the south central portion of the West Kitikmeot region. This area is made up of broad, sloping uplands, plateaus, and lowlands (WKRLUP, 2005). Much of the area is largely composed of unvegetated rock outcrops and boulder fields. The landscape is characterized by higher elevations, which are moderated by open water during the late summer and early fall. The exploration properties occur within the Bathurst Inlet-Burnside Watershed and the area is dotted by thousands of lakes, collected by streams or by one of the major rivers in the area (e.g., Burnside, Mara). The exploration area lies within two geological provinces; the Slave Province and the Bear Province. The Slave Geological Province is underlain by granite and related gneisses, as well as by sedimentary and volcanic rocks (more than 2.5 billion years old). The Bear Geological Province contains mainly volcanic and sedimentary rocks ranging in age from about two billion years.

The mean annual temperature is approximately -10.5°C with a summer mean of 6°C and a winter mean of -26.5°C. The mean annual precipitation range is 200-300 mm (Environment Canada website). The ground is covered in snow from late October to June most years. Lakes are ice-covered from approximately October to June most years, with ice thickness reaching depths of at least 2.0 metres.

## **2.0 SUMMARY OF ACTIVITIES**

There was no drilling at Sabina's Wishbone – Malley Property throughout the 2013 exploration season. Surface mapping and prospecting were completed across portions of the Wishbone – Malley and Del Properties focusing on areas identified by previous and current exploration programs.

The 2013 Wishbone exploration program was supported by Sabina's Back River Project Goose camp. Work based out of Goose camp in the 2013 exploration season can be seen in Sabina's AANDC LUP N2010C0016 2013 annual report.

## **3.0 2014 WORK PLAN**

- Exploration activities such as claim staking, prospecting, field mapping, manual trenches/test pits and downhole/ground/air based geophysical surveys.

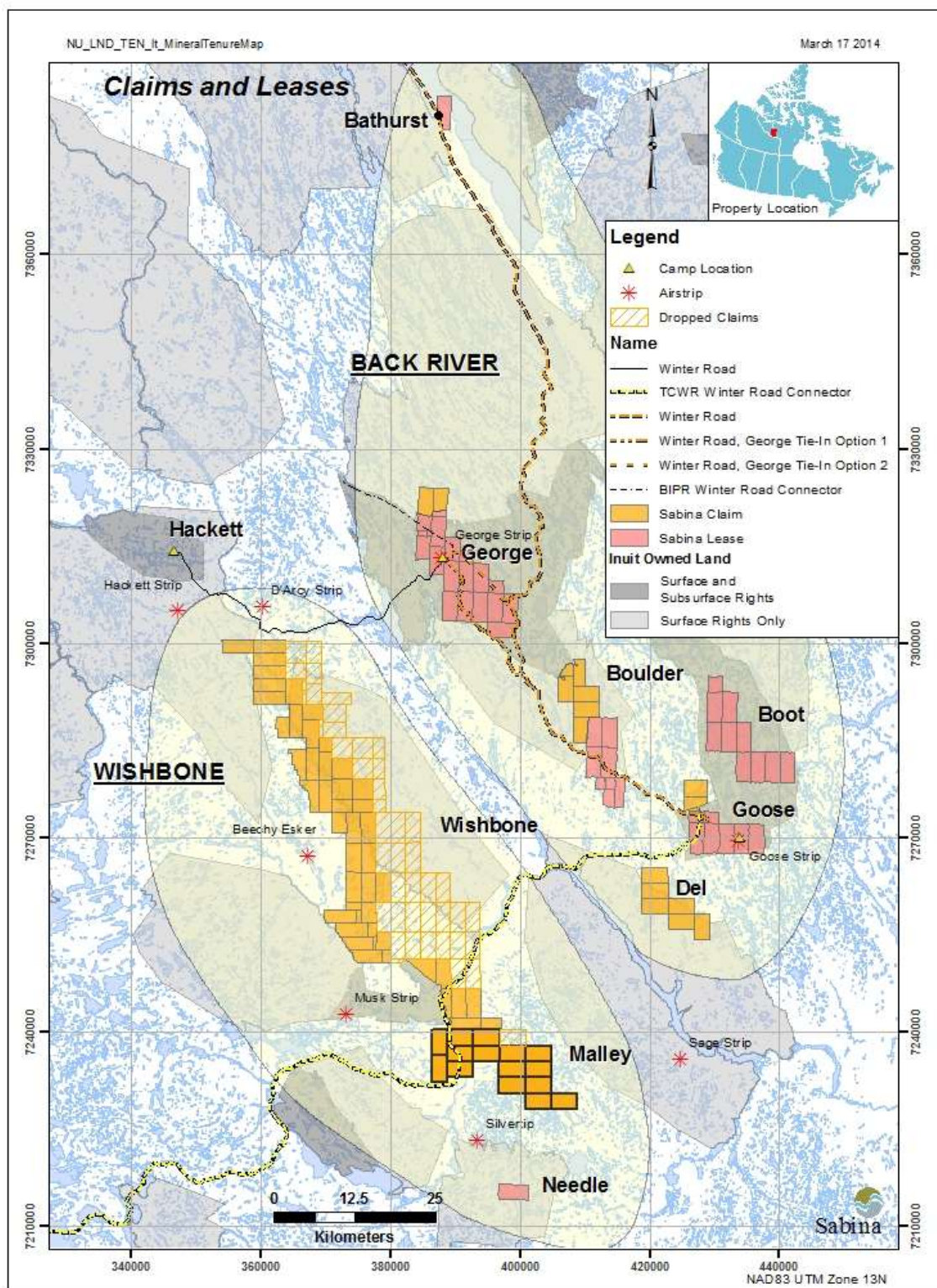


Figure 1. Sabina Properties in the Kitikmeot Region.

## **4.0 PROJECT TERMS AND CONDITIONS**

Sabina has, to the best of our knowledge, conducted this operation in full compliance with the terms and conditions annexed to the permits, and we are actively working with inspectors and regulators to address any issues or concerns which arise and to improve the way in which we operate. We strive to maintain a high standard of performance in the course of all of our operations.