



Back River Project

2013 Annual Report For

AANDC Land Use License N2010C0016

March 2014

Contents

1.0	INTRODUCTION	1
1.1	Sabina Environmental Policy	1
1.2	Site Location and Description	1
1.3	Associated Permits, Licences and Authorizations	2
2.0	SUMMARY OF ACTIVITIES.....	3
2.1	Goose Lake.....	3
2.2	George Lake	4
3.0	WORK PLAN.....	5
4.0	ENVIRONMENTAL STUDIES	7
5.0	WILDLIFE.....	8
5.1	Goose Lake.....	8
5.2	George Lake	8
6.0	INUIT EMPLOYEES	9
7.0	COMMUNITY CONSULTATIONS	9
8.0	ANNUAL INSPECTION ACTIVITIES	9
9.0	SITE VISITS WITH COMMUNITY MEMBERS.....	10
10.0	SITE PHOTOS.....	11
11.0	TAKE-OFFS AND LANDINGS	12
12.0	HELICOPTER TOUCH-DOWNS	13
13.0	PROGRESSIVE RECLAMATION WORK	13
14.0	PROJECT TERMS AND CONDITIONS	14

1.0 INTRODUCTION

This report summarizes 2013 activities completed by Sabina related to land use permit #N2010C0016.

1.1 Sabina Environmental Policy

Sabina Gold & Silver Corp. takes very seriously its responsibility to act as a steward of the environment. In meeting this responsibility, Sabina acts to:

- Ensure that we design our activities and operate in compliance with all environmental regulations to minimize our impact on the environment.
- Promote responsibility and accountability of managers, employees and contractors to the protection of the environment, and make environmental performance an important factor in the management/contractor review process.
- Provide resources, personnel and training to enhance the capacity of management, employees and contractors to implement programs and policies to protect the environment.
- Communicate openly with employees, contractors, local stakeholders and government on our environmental protection and sustainability programs and performance and address concerns pertaining to potential hazards and impacts.
- Promote the development and implementation of systems and technologies to minimize risks to the environment.
- Establish and maintain appropriate emergency response plans for all activities and facilities
- Maintain a self-monitoring program at each facility to ensure compliance and to proactively address plans to correct potential deficiencies.
- Work cooperatively with government agencies, local communities and contractors to develop and enhance systems and technologies to improve environmental and sustainability practices.
- Encourage all employees, contractors or stakeholders to report to management any known or suspicious departure from this policy or its related procedures.

1.2 Site Location and Description

The Back River exploration project is located in western Nunavut, south of Bathurst Inlet within the Slave Structural Province. It lies approximately 525 kilometres northeast of Yellowknife and 400 kilometres south of Cambridge Bay, NU (Figure 1). The project area is within the zone of continuous permafrost, with the primary camp at Goose Lake and a satellite camp at George Lake. Coordinates for the camps are as follows:

- Goose 65°32' north 106°25' west (UTM zone 13, 434034E, 7269928N)
- George 65°55' north 107°27' west (UTM zone 13, 388032E, 7313438N)

The Goose camp is located on the slope of the western bank of Goose Lake and consists of a 158-person camp constructed for support services directed towards exploration activities (Figures 2 and 3). The lakeshore is approximately 50 m toward the north and the regional topographical gradient surrounding the camp ranges from 2% to 6% towards the north. The camp is approximately 500 metres (m) in length from east to west and 100 m wide from north to south, covering an area of 50,000 m². A small but visible creek runs east northeast on the eastern side of the camp. The camp facilities are located on natural tundra underlain by a layer overlying silt-sand material.

The George camp is located at the southern end of George Lake and improvements were made during the 2013 season including construction to improve the camp to support a 60 person camp and exploration drill program (Figure 4). Additional improvements in 2013 included the construction of two helicopter pads and a berm for the gray water discharge.

Regionally this exploration area lies within the Takijuk Lake Uplands ecoregion, which covers the south central portion of the West Kitikmeot region. This area is made up of broad, sloping uplands, plateaus, and lowlands (WKRLUP, 2005). Much of the area is largely composed of unvegetated rock outcrops and boulder fields. The landscape is characterized by higher elevations, which are moderated by open water during the late summer and early fall. The exploration properties occur within the Bathurst Inlet-Burnside Watershed and the area is dotted by thousands of lakes, collected by streams or by one of the major rivers in the area (e.g., Burnside, Mara). The exploration area lies within two geological provinces; the Slave Province and the Bear Province. The Slave Geological Province is underlain by granite and related gneisses, as well as by sedimentary and volcanic rocks (more than 2.5 billion years old). The Bear Geological Province contains mainly volcanic and sedimentary rocks ranging in age from about two billion years.

The mean annual temperature is approximately -10.5°C with a summer mean of 6°C and a winter mean of -26.5°C. The mean annual precipitation range is 200-300 mm (Environment Canada website). The ground is covered in snow from late October to June most years. Lakes are ice-covered from approximately October to June most years, with ice thickness reaching depths of at least 2.0 metres.

1.3 Associated Permits, Licences and Authorizations

Sabina is actively exploring the Goose and George area under valid land use, quarry, and water permits seen in Tables 1 and 2 respectively.

Table 1. List of Licences and Permits issued for Goose Project

Permit No.	Permit Name	Expiry	Issuing Agency
N2010C0016	Mineral Exploration	2014-10-31	AANDC
KTL304C017 – amd	Goose Exploration	2014-12-13	KIA
2BE-GOO1015 – amd 3	Goose Camp	2015-03-31	NWB
KTP11Q001	Rock quarry area	2014-12-13	KIA
KTP12Q001	Sand/gravel quarry area adjacent to airstrip	2014-12-13	KIA
KTL204C012	Boulder exploration	2014-12-13	KIA
KTL204C020	Boot exploration	2014-12-13	KIA

Table 2. List of Licences and Permits issued for George Project

Permit No.	Permit Name	Expiry	Issuing Agency
N2010C0016	Mineral Exploration	2014-12-31	AANDC
KTL304C018 – amended	George Exploration	2014-12-13	KIA
KTP12Q002	George Quarry	2014-12-13	KIA
2BE-GEO1015	George Camp	2015-03-31	NWB

2.0 SUMMARY OF ACTIVITIES

2.1 Goose Lake

During the 2013 season, planes arriving in and out of the Goose Lake property utilized an ice strip from January until May and the all-weather airstrip from May until closure in October.

Personnel arrived at the Goose Lake site on January 22nd to open the camp and prepare the ice strip for larger aircraft. On February 4th, once the ice strip was able to receive larger aircraft, work crews were mobilized to the Goose Lake Camp to commence with ice road construction to access the quarry, refuelling in preparation of the remaining season and drilling activities.

The camp can accommodate a maximum of 158 people, however, the average daily occupancy throughout the season was 99 people with a peak of 132 people in April. Personnel were mobilized to the site on January 22nd to prepare and open the camp; camp opened on February 4th and ran continuously until October 11th, for a total of 248 operating days.

The Goose Lake Quarry east of camp was developed in February/March to provide rock for a crusher which was operational in March and April. This produced aggregate materials of varying sizes to complete the all-weather airstrip, the upgrade of the road from camp to the airstrip, as well as construction of infrastructure and storage pads. Pads were built to accommodate 7-75,000L sea-can fuel tanks, a warehouse storage area, lined hazardous waste storage area, lined fuel storage area, and three helicopter pads.

New infrastructure was added and existing infrastructure was upgraded at the Goose camp over the season to support the personnel required to complete the quarrying

activities, construction of the all-weather airstrip and increased drilling activities. This included the addition of 3 new sleeping tents, upgrade of the incinerator building, and the installation of an impermeable liner at the south quonset. Repair to both gray water lines was also undertaken in 2013 and piping was replaced and realigned to ensure proper drainage. Electrical work was conducted throughout camp. The construction of lined sea cans for all drilling muds and additives were completed to ensure materials are stored within containment.

At the end of July weather conditions and ground conditions around camp resulted in increased dust levels in camp. For health and safety reasons water was used on an “as-needed” basis for the rest of the season in camp, along road and airstrip.

The 2013 drilling focused on exploration targets within the Goose, Boulder and Boot leases. Overall, 196 holes were completed totaling approximately 40,000 meters on Goose properties; 37 holes were completed totaling approximately 11, 000 meters on Boulder properties and 29 holes were completed totaling approximately 6100 meters on Boot properties. The Goose lease campaign focused on near surface extensions of the known mineralized zones in the Goose, Llama and Umwelt areas. In addition, geotechnical and geomechanical drilling was completed in the area to identify underlying ground conditions for proposed Project infrastructure. A total of 53 holes were drilled for geotechnical/geomechanical purposes totaling approximately 5600 meters at the Goose Lake property. Drilling at Boulder and Boot focused on exploration targets identified by personnel conducting structural surface mapping and prospecting. A total of approximately 45,000 samples were sent out of camp for laboratory analysis. Surface mapping and prospecting were completed across the Goose, Boulder and Boot Properties focusing on areas of interest.

2.2 George Lake

The George camp was operational from February 15th to August 5th for a total of 182 days. The camp can accommodate a maximum of 60 people; however, the average daily occupancy was 41 people.

Personnel, equipment and supplies were mobilized to the property in the winter months by fixed wing aircraft including C-130 Hercules, DHC-5 Buffalo, Dornier 228, Dash-7, Dash-8, Twin Otter and Electra on an ice airstrip on George Lake. In the summer, Twin Otter aircrafts were used to land on the land strip adjacent to camp.

No new infrastructure was added to the George camp in 2013.

During the month of July, weather conditions and ground conditions around camp resulted in increased dust levels in camp. For health and safety reasons, water was used on an “as-needed” basis for the rest of the season in camp.

The movement of core boxes to the approved, new location on the esker south of camp commenced in 2013. A large number of boxes were relocated, although not all were moved.

The focus of the 2013 diamond drilling program at the George Property was exploration drilling at near surface extension of the known mineralized areas. A total of 82 holes were completed totaling approximately 17,000 meters. Geomechanical drilling was also conducted at the George Lake property and 18 holes were drilled totaling approximately 2400 meters. Surface mapping and prospecting were completed at the George Properties. These ground surveys focused on areas identified for future exploration drilling programs.

3.0 WORK PLAN

Possible 2014 activities may include, but are not limited to:

- Up to 15,000m of diamond drilling. The bulk of this drilling will be associated with on-going exploration throughout the Project area. A percentage of this drilling would be associated with on-going baseline studies to establish current environmental/geotechnical conditions in areas associated with the Back River Project.
- Other exploration activities such as claim staking, prospecting, field mapping, manual trenches/test pits and downhole/ground/air based geophysical surveys. These surveys will also be incorporated into on-going baseline studies to improve the understanding of current environmental/geotechnical conditions for project design and development.

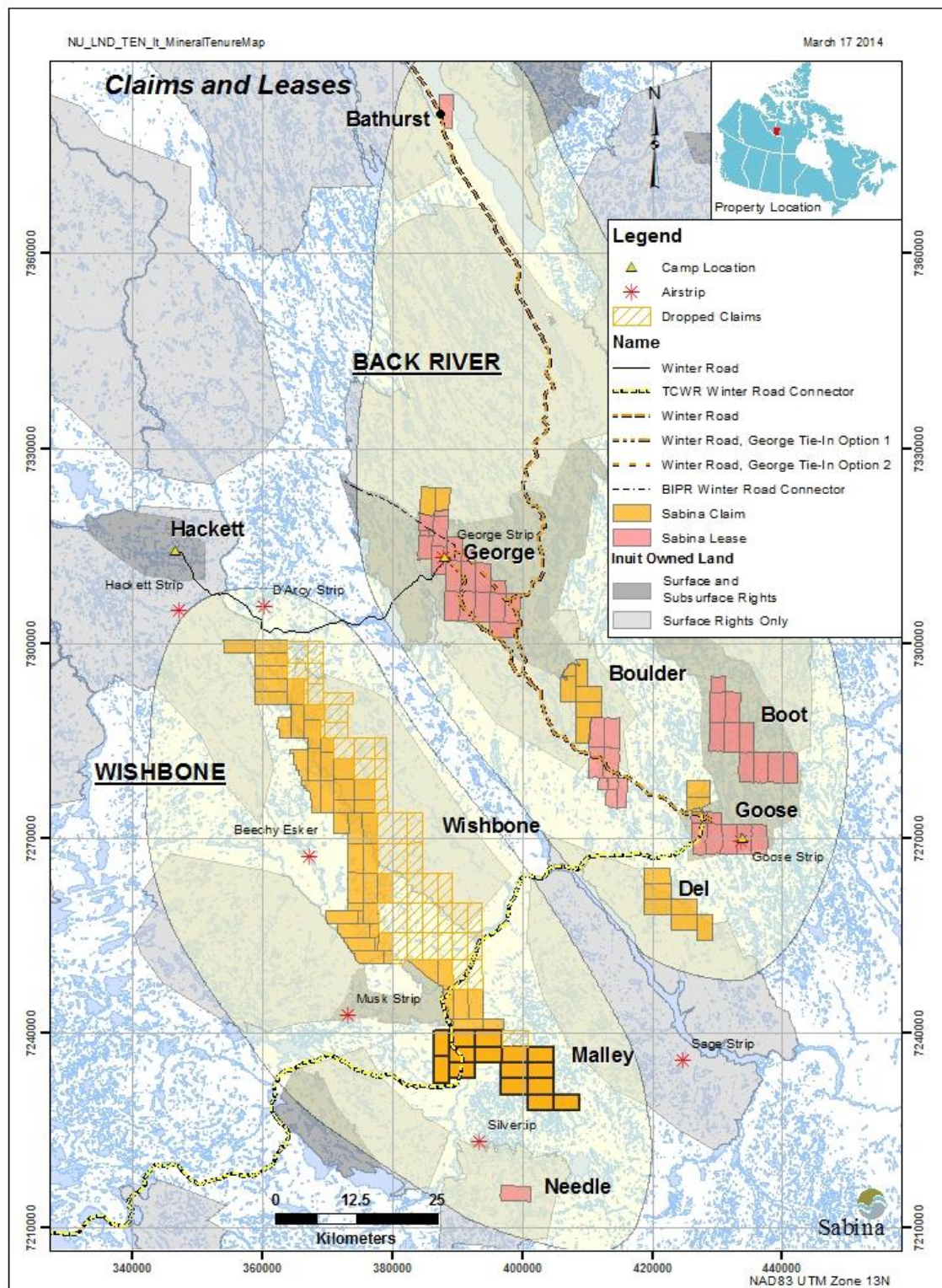


Figure 1. Sabina Properties in the Kitikmeot Region.

4.0 ENVIRONMENTAL STUDIES

In 2013 Sabina strove to make significant improvements in their site-based Environmental program; specifically targeting drill management, waste management, and fuel management. Sabina engaged dedicated Environmental personnel for the program to conduct the monitoring, ensure proper implementation of plans, and to bring this project into compliance with the regulatory requirements.

In 2013 Sabina also embarked upon the largest collection of baseline environmental information to date in the Back River Project Area, marking an increase over the previous years. The information gathered was critical for Sabina to be able to permit the future operations in a timely manner.

Collection of the 2013 baseline environmental information was performed by Rescan Environmental Services Ltd. in collaboration with Sabina. Program necessities such as helicopter usage, field assistants, and boat requirements throughout the 2013 field work program were coordinated and provided by Sabina. Fieldwork was based in both George and Goose camps during the year, with the initial teams arriving in March and the last team departing in mid September.

The geographic area covered by the planned 2013 baseline program included the following:

- Goose property area;
- George property area;
- A proposed all-weather road (AWR) from the Goose property to the George property, extending west until it intersects with the proposed Bathurst Inlet Port and Road (BIPR) road;
- A proposed winter road from the Goose property to the George property;
- A proposed winter road from the Goose property to Bathurst Inlet; and
- A barge/port site and laydown area in Bathurst Inlet, different from the proposed BIPR port.
- A proposed Tibbit – Contwoyto Winter Road to the Back River Project

The following programs were included in the 2013 field work program: meteorology, air quality and dust, noise, hydrology and bathymetric surveys, metal leaching/acid rock drainage (ML/ARD), freshwater and marine water quality, sediment quality, and aquatic biology, freshwater and marine fish and fish habitat, wildlife (terrestrial and marine), wildlife DNA study (Grizzly Bear and Wolverine), archaeology, ecosystem mapping, vegetation, wetlands, rare plants, soils and terrain, socio-economics, land use, country foods, and traditional knowledge. It is also important to note that permafrost monitoring continued and included the installation of sixteen new thermistors as part of the geotechnical/geomechanical drilling in addition to data collection from the existing five previously installed.

5.0 WILDLIFE

5.1 Goose Lake

During March and April, several sightings of wolverines near camp prompted a revision of the waste management in camp and raising awareness to personnel in camp. With these improvements, wildlife in the area of camp was reduced and wolverines have not been observed near camp during the spring and summer seasons.

In July and August, caribou were moving through the Project area and a small number of animals were bedding on the airstrip. This prompted the development of a caribou herding procedure to ensure the safety of caribou and personnel when aircraft were arriving/departing. The procedure included two site staff walking along the airstrip 20 minutes prior to aircraft landing/taking off and encouraging caribou to walk off of the airstrip. Caribou responded well to this procedure and no incidents' occurred.

Throughout the season musk-ox and wolves were observed throughout the Project area. A grizzly bear was sighted near camp once in August and once in September. Bear bangers were utilized and the bear responded by leaving the camp area. No interaction with camp infrastructure or wastes occurred during these sightings.

A moose was observed near the north end of Goose Lake in September.

5.2 George Lake

Several species of wildlife were observed during the 2013 season on the George property. These species include wolves, caribou, wolverine, numerous small mammals (foxes, siksiks, hares, lemmings), and various birds (ptarmigan, songbirds, raptors and waterfowl). There were no adverse interactions or encounters with any wildlife species during the 2013 exploration season.

This season, three wolves and a herd of caribou were spotted in the vicinity of camp. In July, a wolf was noted southwest of George camp; and it was moved away from camp using bangers. No other incidents involving wildlife occurred at the George property in 2013.

6.0 INUIT EMPLOYEES

The following table identifies the Nunavut Land Claim Agreement (NLCA) beneficiaries employed by Sabina and total days worked on the Back River Exploration Project. The table does not include those workers employed by contractors or suppliers.

During 2013, 58 Inuit workers were employed by Sabina with a gross payroll value of approximately \$1,654,590.00.

Table 3. NLCA beneficiary employees of Back River Project, 2013.

Number of Employees	Community	Total Days
1	Arviat	73
1	Baker Lake	169
17	Cambridge Bay	1055
24	Gjoa Haven	1996
9	Kugluktuk	228
2	Kuugaruk	312
4	Taloyoak	369
Total Approximate Gross Payroll		\$ 1,654, 590.00

7.0 COMMUNITY CONSULTATIONS

Sabina has conducted numerous community engagement sessions throughout the Kitikmeot region providing updates on current exploration activities and future proposed Project development. Please see Appendix A for details on dates, communities visited and topics discussed.

8.0 ANNUAL INSPECTION ACTIVITIES

Inspections that occurred during the 2013 exploration program include:

- April 25-28, AANDC Water Resources inspector Eva Paul completed an inspection of the Back River Project. Deficiencies of note:
 - The lack of inclusion of water quality and quantity data with the 2012 NWB Annual Report. Information was provided on June 28th, 2013 as an Addendum to the Inspector and NWB;
 - A Quarry Development Plan required submission. This Plan was submitted on June 28th, 2013.
- July 12-13, AANDC Lands Inspector Baba Pedersen, completed an inspection of the Back River Project. Additional work was needed to address drillhole reclamation. Work

requested was completed and follow up report submitted to Lands Inspector on August 5th, 2013.

- July 16-17, KIA Inspectors Wynter Kuliktana, Luigi Toretta and Sam Arnakalak completed an inspection of the George camp and it was found to be in compliance with permit.
- August 18, WSCC inspection, Martin Van Rooy and Jeff Fuller focused on electrical systems at the Goose Lake Project. All deficiencies were corrected at that time.

9.0 SITE VISITS WITH COMMUNITY MEMBERS

Community members were part of the wildlife baseline work conducted by Rescan Environmental. In particular, elders were utilized to provide advice on where to place wildlife cameras to collect information on the movement of caribou and bears.

10.0 SITE PHOTOS



Figure 2. Aerial image of Goose camp looking west. Photograph taken August, 2013.



Figure 3. Aerial image of Goose camp looking east. Photograph taken August, 2013



Figure 4. Aerial image of George camp looking east. Photograph taken October, 2013.

11.0 TAKE-OFFS AND LANDINGS

During the 2013 season, planes arriving in and out of the Goose Lake property utilized an ice strip from January until May and the all-weather airstrip from May until closure in October.

Personnel, equipment and supplies were mobilized to the property by fixed wing aircraft including C-130 Hercules, 737 jets, DHC-5 Buffalo, Dornier 228, Dash-7, Dash-8, Electra and Twin Otter landing on the prepared ice airstrip on Goose Lake. Flights began landing on the completed all weather strip in May and the final plane of the season left from Goose Lake on October 11th, at which point the camp was closed for the season.

Table 4. Goose Lake Flight Inventory.

Aircraft	Twin	Dornier	Dash-7	Dash-8	Buffalo	Electra	737	Hercules	King Air
Quantity	45	16	3	17	1	28	79	79	15
Total	424								

During the 2013 George Lake field season personnel, equipment and supplies were mobilized to the property in the winter months by fixed wing aircraft including C-130 Hercules, DHC-5 Buffalo, Dornier 228, Dash-7, Dash-8, Twin Otter and Electra on an ice airstrip on George Lake. In the summer, Twin Otter aircrafts were used to land on the land strip adjacent to camp.

When camp facilities were not open, personnel were also mobilized to the property as operational requirements dictated via helicopter from Goose Lake camp. All personnel returned to their base of operations at the end of each day (i.e., there were no overnight stays before camp opened/closed for season).

Table 5. George Lake Flight Inventory.

Aircraft	Twin	Dornier	Dash-7	Dash-8	Buffalo	Electra	Hercules
Quantity	45	16	3	17	1	28	28
Total	127						

12.0 HELICOPTER TOUCH-DOWNS

Bell 407 helicopters were used throughout the course of the 2013 exploration program. Records were not kept of every individual touchdown, however it would be reasonable to estimate an overall average of 10-15 landings per day including drill crew shift changes, drill support, as well as geological, survey and environmental crews. This estimate would result in approximately 2400-3600 landings.

The primary flight routes would be between Goose and George camps and the drilling areas indicated in the above figures. Most landings would only be brief touchdowns to allow passengers to enter or exit the helicopter, without the machine actually shutting down.

13.0 PROGRESSIVE RECLAMATION WORK

During the 2013 season, reclamation activities were focused on historical drill sites in the Umwelt area at the Goose Lake project area. Eighty-seven historical drill sites from 2009-2012 have been reclaimed and a photo catalogue is attached in Appendix B. Materials removed from sites included garbage, metal and timbers as well as anchors and casing cut and capped. Appendix C contains information on reclamation activities at the George Lake site.

In 2013, drilling procedures were refined where sites were required to be cleaned up prior to moving on to the next drill site. Internal inspections were conducted to ensure that clean up procedures were occurring and evident improvements have been noted.

14.0 PROJECT TERMS AND CONDITIONS

Sabina has, to the best of our knowledge, conducted this operation in full compliance with the terms and conditions annexed to the permits, and we are actively working with inspectors and regulators to address any issues or concerns which arise and to improve the way in which we operate. We strive to maintain a high standard of performance in the course of all of our operations.

APPENDIX A

RECORD OF MEETINGS/COMMUNITY CONSULTATIONS AND RECORD OF ATTEMPTED MEETINGS/COMMUNITY CONSULTATIONS

Date	Individual(s) / Organization	Type of Activity
Cambridge Bay		
February 14, 2012	Brenda Sitatak HTO Manager	Introductions and information sharing
February 14, 2012	Renee Krucas Executive Director, Kitikmeot Heritage Society	Introductions and information sharing
February 14, 2012	Connie Kapolak High School Principal	Introductions and information sharing
March 27, 2012	Brenda Sitatak HTO Manager	Introductions and update
March 27, 2012	Stephen King, Senior Administrative Officer Jim McEchrean, Economic Development Officer Hamlet of Cambridge Bay	Project introduction
April 5, 2012	Renee Krucas Executive Director, Kitikmeot Heritage Society	Letter / invitation to nominate representatives to the Cambridge Bay Community Advisory Group
April 5, 2012	Stephen King, Senior Administrative Officer Hamlet of Cambridge Bay	Letter / invitation to nominate representative to the Cambridge Bay Community Advisory Group
April 5, 2012	Brenda Sitatak HTO Manager	Letter / invitation to nominate representative to the Cambridge Bay Community Advisory Group
June 14, 2012	General public	Call-in radio show
June 14, 2012	Jessie Lyall, HTO Board Member Brenda Sitatak, HTO Manager	Project introduction
June 14, 2012	General public	Public meeting - Project overview
June 14, 2012	Hamlet council and administration	Project introduction
June 15, 2012	Cambridge Bay Community Advisory Group	Project introduction
September 11-12, 2012	Cambridge Bay Community Advisory Group	Sabina hosted a dinner and meeting for the Cambridge Bay and Kugluktuk Community Advisory Groups (CAGs) in Cambridge Bay on September 11, 2012. The CAGs also visited the Back River Project site on September 12, 2012.

Date	Individual(s) / Organization	Type of Activity
September 27-29, 2012	Interviews conducted with a number of individuals representing a variety of interests in the community including: government administration; health, wellness and social services; safety and protection services; business and economic development; and education and training	Socio-economic baseline data collection; documentation of expected Project benefits, Project concerns, and suggested mitigation measures
November 19, 2012	General public	Call-in radio show
November 19, 2012	High school students and staff	Mining and geology presentation
November 19, 2012	General public	Public open house
November 19, 2012	Cambridge Bay Community Advisory Group	Project update
November 30 - December 1, 2012	Local hunters from Cambridge Bay	Land use focus group
February 5-6, 2013	General public	Sabina representatives participated in NIRB's scoping meetings for the Project and were available to the public for questions and information sharing
February 5, 2013	Cambridge Bay Community Advisory Group	Project update
April 23, 2013	General public	Public meeting - Project overview/update
April 23, 2013	Cambridge Bay HTO	Project overview/update
August 20, 2013	General public	Sabina provided an overview of the Back River Project and its traditional knowledge study
August 20, 2013	General public	The Kitikmeot Inuit Association provided an overview of the Naonaiyaotit Traditional Knowledge Project (NTKP) report completed for the Back River Project and additional traditional knowledge workshops being conducted
August 21-23, 2013	Selected elders and knowledge holders	A series of traditional knowledge workshops were held with selected elders and local knowledge holders for Sabina's traditional knowledge study. These workshops focused on the topics of 'heritage and land use', 'terrestrial environment' and 'marine environment'.

Date	Individual(s) / Organization	Type of Activity
<i>November 2013 (scheduled)¹</i>	<i>General public</i>	<i>Public meeting - Project overview/update</i>
<i>November 2013 (scheduled)</i>	<i>Cambridge Bay HTO</i>	<i>Project update</i>
<i>November 2013 (scheduled)</i>	<i>Cambridge Bay Hamlet council</i>	<i>Project update</i>
<i>November 2013 (scheduled)</i>	<i>Cambridge Bay Community Advisory Group</i>	<i>Project update</i>
<i>November 2013 (scheduled)</i>	<i>Cambridge Bay High School students</i>	<i>Project overview and discussion of future employment opportunities</i>
<i>November 2013 (scheduled)</i>	<i>General public</i>	<i>Radio update</i>
Kugluktuk		
April 11, 2012	Barbara Adjun HTO Manager	Letter / invitation to nominate representative to the Kugluktuk Community Advisory Group
April 26, 2013	Donald LeBlanc, Senior Administrative Officer Hamlet of Kugluktuk	Letter / invitation to nominate representative to the Kugluktuk Community Advisory Group
June 12, 2012	Kugluktuk HTO	Project introduction
June 12, 2012	General public	Public meeting - Project overview
June 13, 2012	Donald LeBlanc Senior Administrative Officer Hamlet of Kugluktuk	Project introduction
June 13, 2012	Kugluktuk Community Advisory Group	Project introduction
September 11-12, 2012	Kugluktuk Community Advisory Group	Sabina hosted a dinner and meeting for the Kugluktuk and Cambridge Bay Community Advisory Groups (CAGs) in Cambridge Bay on September 11, 2012. The CAGs also visited the Back River Project site on September 12, 2012.
October 1-3, 2012	Interviews conducted with a number of individuals representing a variety of interests in the community including: government administration; health, wellness and social services; safety and protection services; business	Socio-economic baseline data collection; documentation of expected Project benefits, Project concerns, and suggested mitigation measures

¹ November 2013 meetings are scheduled to occur in each Kitikmeot community, but after the DEIS has been finalized. The results of these and other future meetings will be incorporated into Sabina's FEIS submission.

Date	Individual(s) / Organization	Type of Activity
	and economic development; and education and training	
November 21, 2012	High school students and staff	Mining and geology presentation
November 21, 2012	General public	Public meeting - Project overview/update
November 21, 2012	Kugluktuk Community Advisory Group	Project update
November 27, 2012	Local hunters from Kugluktuk	Land use focus group
February 7-8, 2013	General public	Sabina representatives participated in NIRB's scoping meetings for the Project and were available to the public for questions and information sharing
February 8, 2013	Kugluktuk Community Advisory Group	Project update
April 22, 2013	General public	Public meeting - Project overview/update
April 22, 2013	Kugluktuk Community Advisory Group	Project update
August 12, 2013	General public	Sabina provided an overview of the Back River Project and its traditional knowledge study
August 13, 2013	General public	The Kitikmeot Inuit Association provided an overview of the Naonaiyaotit Traditional Knowledge Project (NTKP) report completed for the Back River Project and additional traditional knowledge workshops being conducted
August 14-16, 2013	Selected elders and knowledge holders	A series of traditional knowledge workshops were held with selected elders and local knowledge holders for Sabina's traditional knowledge study. These workshops focused on the topics of 'heritage and land use', 'terrestrial environment' and 'marine environment'.
<i>November 2013 (scheduled)</i>	<i>General public</i>	<i>Public meeting - Project overview/update</i>
<i>November 2013 (scheduled)</i>	<i>Kugluktuk HTO</i>	<i>Project update</i>
<i>November 2013 (scheduled)</i>	<i>Kugluktuk Hamlet council</i>	<i>Project update</i>
<i>November 2013 (scheduled)</i>	<i>Kugluktuk Community Advisory Group</i>	<i>Project update</i>

Date	Individual(s) / Organization	Type of Activity
<i>November 2013 (scheduled)</i>	<i>Kugluktuk High School students</i>	<i>Project overview and discussion of future employment opportunities</i>
<i>November 2013 (scheduled)</i>	<i>General public</i>	<i>Radio update</i>
Kingaok		
April 5, 2012	Sam Kapolak, Chairperson Bathurst Inlet HTO	Letter / invitation to nominate representative to the Cambridge Bay Community Advisory Group
November 18, 2012	Various residents of Kingaok	Sabina hosted a Project information meeting in Cambridge Bay specifically for residents of Kingaok and Omingmaktok
November 30 - December 1, 2012	Local hunters from the Bathurst Inlet area	Land use focus group
Fall 2012	Interviews conducted with selected individuals in the community for Sabina's socio-economic study	Socio-economic baseline data collection; documentation of expected Project benefits, Project concerns, and suggested mitigation measures
January 1, 2013	Boyd Warner President, Bathurst Inlet Lodge	Project discussion (via phone)
August 14-16, 2013 (in Kugluktuk) August 21-23 (in Cambridge Bay)	Selected elders and knowledge holders from or familiar with the Bathurst Inlet area	A series of traditional knowledge workshops were held with selected elders and local knowledge holders for Sabina's traditional knowledge study. These workshops focused on the topics of 'heritage and land use', 'terrestrial environment' and 'marine environment'.
<i>November 2013 (scheduled)</i>	<i>Various residents of Kingaok</i>	<i>Project update in Cambridge Bay specifically for residents of Kingaok and Omingmaktok</i>
Omingmaktok		
April 5, 2012	Peter Kapolak, Chairperson Omingmaktok HTO	Letter / invitation to nominate representative to the Cambridge Bay Community Advisory Group
November 18, 2013	Various residents of Omingmaktok	Sabina hosted a Project information meeting in Cambridge Bay specifically for residents of

Date	Individual(s) / Organization	Type of Activity
		Omingmaktok and Kingaok
November 30 - December 1, 2012	Local hunters from the Bathurst Inlet area	Land use focus group
Fall 2012	Interview conducted with individual in the community for Sabina's socio-economic study	Socio-economic baseline data collection; documentation of expected Project benefits, Project concerns, and suggested mitigation measures
August 14-16, 2013 (in Kugluktuk) August 21-23 (in Cambridge Bay)	Selected elders and knowledge holders from or familiar with the Bathurst Inlet area	A series of traditional knowledge workshops were held with selected elders and local knowledge holders for Sabina's traditional knowledge study. These workshops focused on the topics of 'heritage and land use', 'terrestrial environment' and 'marine environment'.
November 2013 (scheduled)	Various residents of Omingmaktok	Project update in Cambridge Bay specifically for residents of Kingaok and Omingmaktok
Gjoa Haven		
June 20, 2012	Hamlet council members and staff	Project introduction
June 20, 2012	General public	Public meeting - Project overview
September 17-19, 2012	Interviews conducted with a number of individuals representing a variety of interests in the community including: government administration; health, wellness and social services; business and economic development; and education and training	Socio-economic baseline data collection; documentation of expected Project benefits, Project concerns, and suggested mitigation measures
February 12, 2013	General public	Sabina representatives participated in NIRB's scoping meeting for the Project and were available to the public for questions and information sharing
February 13, 2013	General public	Radio Show - Project update and notice of upcoming Actua educational program for Kitikmeot youth
April 24, 2013	General public	Public meeting - Project overview/update
April 24, 2013	Gjoa Haven HTO	Project overview/update

Date	Individual(s) / Organization	Type of Activity
April 24, 2013	General public	Radio Show - Project update
<i>November 2013 (scheduled)</i>	<i>General public</i>	<i>Public meeting - Project overview/update</i>
<i>November 2013 (scheduled)</i>	<i>Gjoa Haven HTO</i>	<i>Project update</i>
<i>November 2013 (scheduled)</i>	<i>Gjoa Haven Hamlet council</i>	<i>Project update</i>
<i>November 2013 (scheduled)</i>	<i>Gjoa Haven High School students</i>	<i>Project overview and discussion of future employment opportunities</i>
<i>November 2013 (scheduled)</i>	<i>General public</i>	<i>Radio update</i>
Taloyoak		
June 19, 2012	General public	Public meeting - Project overview
June 19, 2012	Taloyoak HTO	Project overview
June 19, 2012	Tommy Aiyout, Mayor of Taloyoak David Irqquit, Assistant SAO Hamlet of Taloyoak	Project overview
September 25-26, 2012	Interviews conducted with a number of individuals representing a variety of interests in the community including: government administration; health, wellness and social services; safety and protection services; business and economic development; and education and training	Socio-economic baseline data collection; documentation of expected Project benefits, Project concerns, and suggested mitigation measures
February 13, 2013	General public	Sabina representatives participated in NIRB's scoping meeting for the Project and were available to the public for questions and information sharing
February 14, 2013	General public	Radio Show - Project update and notice of upcoming Actua educational program for Kitikmeot youth
April 25, 2013	General public	Public meeting - Project overview/update
April 25, 2013	General public	Radio Show - Project update
<i>November 2013 (scheduled)</i>	<i>General public</i>	<i>Public meeting - Project overview/update</i>
<i>November 2013 (scheduled)</i>	<i>Taloyoak HTO</i>	<i>Project update</i>
<i>November 2013 (scheduled)</i>	<i>Taloyoak Hamlet council</i>	<i>Project update</i>

Date	Individual(s) / Organization	Type of Activity
<i>November 2013 (scheduled)</i>	<i>Taloyoak High School students</i>	<i>Project overview and discussion of future employment opportunities</i>
<i>November 2013 (scheduled)</i>	<i>General public</i>	<i>Radio update</i>
Kugaaruk		
June 18, 2012	General public	Public meeting - Project overview
September 20-21, 2012	Interviews conducted with a number of individuals representing a variety of interests in the community including: government administration; health, wellness and social services; safety and protection services; business and economic development; and education and training	Socio-economic baseline data collection; documentation of expected Project benefits, Project concerns, and suggested mitigation measures
February 11, 2013	General public	Sabina representatives participated in NIRB's scoping meeting for the Project and were available to the public for questions and information sharing
February 11, 2013	General public	Radio Show - Project update and notice of upcoming Actua educational program for Kitikmeot youth
April 26, 2013	General public	Public meeting - Project overview/update
April 26, 2013	General public	Radio Show - Project update
April 26, 2013	Kugaaruk Hamlet council	Project overview/update
<i>November 2013 (scheduled)</i>	<i>General public</i>	<i>Public meeting - Project overview/update</i>
<i>November 2013 (scheduled)</i>	<i>Kugaaruk HTO</i>	<i>Project update</i>
<i>November 2013 (scheduled)</i>	<i>Kugaaruk Hamlet council</i>	<i>Project update</i>
<i>November 2013 (scheduled)</i>	<i>Kugaaruk High School students</i>	<i>Project overview and discussion of future employment opportunities</i>
<i>November 2013 (scheduled)</i>	<i>General public</i>	<i>Radio update</i>
Yellowknife		
November 15, 2012	Yellowknives Dene First Nation representatives	Project overview

Date	Individual(s) / Organization	Type of Activity
November 16, 2012	General public	Public meeting – Project overview
February 20, 2013	General public	Sabina representatives participated in NIRB's scoping meeting for the Project and were available to the public for questions and information sharing
<i>November 2013 (scheduled)</i>	<i>General public</i>	<i>Public meeting - Project overview/update</i>
Other		
February 13-15, 2012	Various community, government, and industry stakeholders participated	Sabina participated in the Kitikmeot Trade Show in Cambridge Bay
March 28, 2012	Various community, government, and industry stakeholders participated	Sabina participated in the Kitikmeot Socio-Economic Monitoring Committee meeting in Cambridge Bay
April 16-19, 2012	Various community, government, and industry stakeholders participated	Sabina participated in the Nunavut Mining Symposium in Iqaluit
October 30-31, 2012	Various community, government, and industry stakeholders participated	Sabina participated in the Kitikmeot Stakeholders Meeting in Cambridge Bay to discuss training and labour market needs in the Kitikmeot Region
November 13-15, 2012	Various community, government, and industry stakeholders participated	Sabina participated in the Yellowknife Geoscience Forum
February 11-13, 2013	Various community, government, and industry stakeholders participated	Sabina participated in the Kitikmeot Trade Show in Cambridge Bay
April 8-11, 2013	Various community, government, and industry stakeholders participated	Sabina participated in the Nunavut Mining Symposium in Iqaluit
November 19-21, 2013	Various community, government, and industry stakeholders participated	Sabina participated in the Yellowknife Geoscience Forum
September 12, 2013	Various community, government, and industry stakeholders participated	Sabina participated in a meeting on Community Readiness in the Kitikmeot Region, hosted by the Kitikmeot Inuit Association and Canadian Northern Economic Development Agency, in Cambridge Bay

Attempted Meetings			
Date	Community	Individual(s) / Organization	Details
June 2012	Kugaaruk	Kugaaruk Hamlet Council	Invitations for in-person meeting on June 18 made in May and June 2012; Hamlet Council informed Sabina they were unavailable
June 2012	Kugaaruk	Kugaaruk HTO	Invitations for in-person meeting on June 18 made in May and June 2012; HTO informed Sabina they were unavailable
June 2012	Gjoa Haven	Gjoa Haven HTO	Invitations for in-person meeting on June 20 made in May and June 2012; HTO informed Sabina they were unavailable
June 2012	Taloyoak	Taloyoak Hamlet Council	Invitations for in-person meeting on June 19 made in May and June 2012; Hamlet Council informed Sabina they were unavailable
August 2012	Kingaok	General public	Sabina attempted to organize an August 2012 public meeting in Kingaok in June/July 2012. Sabina was informed by local residents that the proposed time period was unworkable as community members would not be present.
August 2012	Omingmaktok	General public	Sabina attempted to organize an August 2012 public meeting in Omingmaktok in June/July 2012. Sabina was informed by local residents that the proposed time period was unworkable as

			community members would not be present.
April 23, 2013	Cambridge Bay	Cambridge Bay CAG	Only one CAG representative was available so the meeting was cancelled. Other CAG members were out of town or otherwise did not show up for the meeting.
April 26, 2013	Kugaaruk	Kugaaruk HTO	A meeting with the Kugaaruk HTO was arranged prior to Sabina's arrival in the community, but Sabina was informed the day of the meeting that HTO members were no longer available to meet.
August 2013	Omingmaktok	General public	Sabina attempted to visit Omingmaktok in August 2013 and host a public meeting to discuss the Project, but was informed that no community members would be present during the proposed time period.
August 2013	Kingaok	General public	Sabina attempted to visit Kingaok in August 2013 and host a public meeting to discuss the Project, but was informed that no community members would be present during the proposed time period.

APPENDIX B

2013 HISTORICAL DRILL SITE RECLAMATION ACTIVITIES – GOOSE LAKE

2013 Historical Drill Site Reclamation



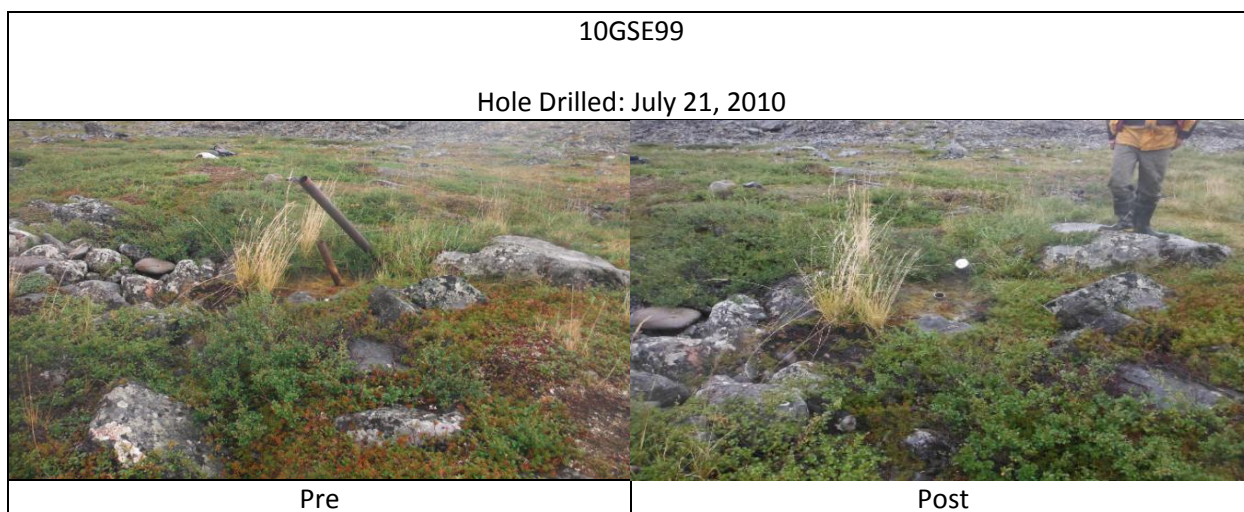
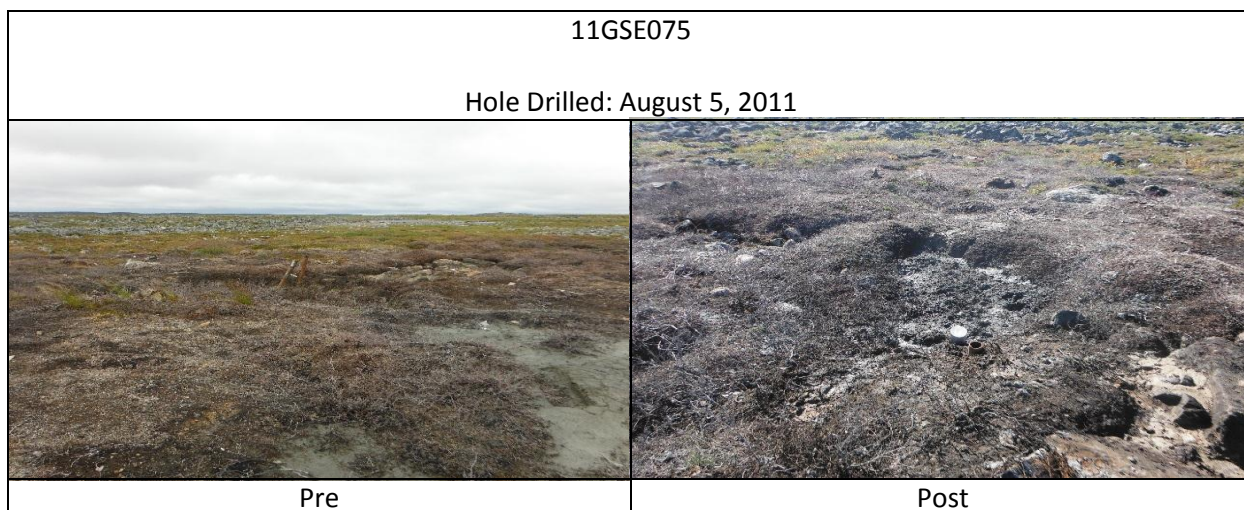
Hole Number (s)	Location	Year Drilled	Easting	Northing	Material removed from Site		Material Cut Off	
12GSE217	Umwelt	2012	430786	7270498	<input type="checkbox"/> Timbers Removed <input type="checkbox"/> Water Line <input checked="" type="checkbox"/> Metal	<input type="checkbox"/> Matting <input type="checkbox"/> Cuttings	<input checked="" type="checkbox"/> Fasing	<input checked="" type="checkbox"/> Anchor
11GSE075	Umwelt	2011	430737	7270523	<input type="checkbox"/> Timbers Removed <input type="checkbox"/> Water Line <input checked="" type="checkbox"/> Metal	<input type="checkbox"/> Matting <input type="checkbox"/> Cuttings	<input checked="" type="checkbox"/> Fasing	<input checked="" type="checkbox"/> Anchor
10GSE99	Umwelt	2010	430509	7270129	<input type="checkbox"/> Timbers Removed <input type="checkbox"/> Water Line <input type="checkbox"/> Metal	<input type="checkbox"/> Matting <input type="checkbox"/> Cuttings	<input checked="" type="checkbox"/> Fasing	<input checked="" type="checkbox"/> Anchor
12GSE173, 173W1, 173W2	Umwelt	2012	430883	7270497	<input checked="" type="checkbox"/> Timbers Removed <input type="checkbox"/> Water Line <input checked="" type="checkbox"/> Metal	<input type="checkbox"/> Matting <input type="checkbox"/> Cuttings	<input type="checkbox"/> Fasing	<input type="checkbox"/> Anchor
12GSE236	Umwelt	2012	430941	7270495	<input type="checkbox"/> Timbers Removed <input type="checkbox"/> Water Line <input checked="" type="checkbox"/> Metal	<input type="checkbox"/> Matting <input checked="" type="checkbox"/> Cuttings	<input type="checkbox"/> Fasing	<input checked="" type="checkbox"/> Anchor
12GSE235	Umwelt	2012	430984	7270413	<input type="checkbox"/> Timbers Removed <input type="checkbox"/> Water Line <input checked="" type="checkbox"/> Metal	<input type="checkbox"/> Matting <input type="checkbox"/> Cuttings	<input type="checkbox"/> Fasing	<input checked="" type="checkbox"/> Anchor
12GSE230	Umwelt	2012	430853	7270356	<input type="checkbox"/> Timbers Removed <input type="checkbox"/> Water Line <input checked="" type="checkbox"/> Metal	<input type="checkbox"/> Matting <input checked="" type="checkbox"/> Cuttings	<input type="checkbox"/> Fasing	<input checked="" type="checkbox"/> Anchor
12GSE224	Umwelt	2012	430738	7270363	<input type="checkbox"/> Timbers Removed <input type="checkbox"/> Water Line <input checked="" type="checkbox"/> Metal	<input type="checkbox"/> Matting <input type="checkbox"/> Cuttings	<input type="checkbox"/> Fasing	<input checked="" type="checkbox"/> Anchor
12GSE207, 12GSE207W1	Umwelt	2012	430750	7270430	<input type="checkbox"/> Timbers Removed <input type="checkbox"/> Water Line <input checked="" type="checkbox"/> Metal	<input type="checkbox"/> Matting <input type="checkbox"/> Cuttings	<input type="checkbox"/> Fasing	<input checked="" type="checkbox"/> Anchor
12GSE191, 191W1, 191W2	Umwelt	2012	430946	7270384	<input type="checkbox"/> Timbers Removed <input type="checkbox"/> Water Line <input checked="" type="checkbox"/> Metal	<input type="checkbox"/> Matting <input checked="" type="checkbox"/> Cuttings	<input checked="" type="checkbox"/> Fasing	<input checked="" type="checkbox"/> Anchor
12GSE174, 174W1	Umwelt	2012	430999	7270424	<input checked="" type="checkbox"/> Timbers Removed <input type="checkbox"/> Water Line <input checked="" type="checkbox"/> Metal	<input type="checkbox"/> Matting <input checked="" type="checkbox"/> Cuttings	<input type="checkbox"/> Fasing	<input type="checkbox"/> Anchor
12GSE241	Umwelt	2012	430987	7270210	<input checked="" type="checkbox"/> Timbers Removed <input type="checkbox"/> Water Line <input checked="" type="checkbox"/> Metal	<input type="checkbox"/> Matting <input checked="" type="checkbox"/> Cuttings	<input checked="" type="checkbox"/> Fasing	<input checked="" type="checkbox"/> Anchor
12GSE243	Umwelt	2012	431155	7270349	<input checked="" type="checkbox"/> Timbers Removed <input type="checkbox"/> Water Line <input checked="" type="checkbox"/> Metal	<input checked="" type="checkbox"/> Matting <input type="checkbox"/> Cuttings	<input checked="" type="checkbox"/> Fasing	<input checked="" type="checkbox"/> Anchor
12GSE215, 215W1	Umwelt	2012	430955	7270323	<input type="checkbox"/> Timbers Removed <input type="checkbox"/> Water Line <input checked="" type="checkbox"/> Metal	<input type="checkbox"/> Matting <input checked="" type="checkbox"/> Cuttings	<input checked="" type="checkbox"/> Fasing	<input checked="" type="checkbox"/> Anchor
12GSE164	Umwelt	2012	430572	7270516	<input type="checkbox"/> Timbers Removed <input type="checkbox"/> Water Line <input checked="" type="checkbox"/> Metal	<input type="checkbox"/> Matting <input type="checkbox"/> Cuttings	<input type="checkbox"/> Fasing	<input type="checkbox"/> Anchor
12GSE154	Umwelt	2012	430579	7270522	<input type="checkbox"/> Timbers Removed <input type="checkbox"/> Water Line <input checked="" type="checkbox"/> Metal	<input type="checkbox"/> Matting <input type="checkbox"/> Cuttings	<input type="checkbox"/> Fasing	<input type="checkbox"/> Anchor
11GSE106	Umwelt	2011	430713	7270572	<input type="checkbox"/> Timbers Removed <input type="checkbox"/> Water Line <input checked="" type="checkbox"/> Metal	<input type="checkbox"/> Matting <input type="checkbox"/> Cuttings	<input checked="" type="checkbox"/> Fasing	<input checked="" type="checkbox"/> Anchor
11GSE068	Umwelt	2011	430681	7270551	<input type="checkbox"/> Timbers Removed <input type="checkbox"/> Water Line <input checked="" type="checkbox"/> Metal	<input type="checkbox"/> Matting <input checked="" type="checkbox"/> Cuttings	<input checked="" type="checkbox"/> Fasing	<input checked="" type="checkbox"/> Anchor
11GSE121	Umwelt	2011	430655	7270521	<input type="checkbox"/> Timbers Removed <input type="checkbox"/> Water Line <input checked="" type="checkbox"/> Metal	<input type="checkbox"/> Matting <input type="checkbox"/> Cuttings	<input checked="" type="checkbox"/> Fasing	<input checked="" type="checkbox"/> Anchor
11GSE042	Umwelt	2011	430626	7270505	<input checked="" type="checkbox"/> Timbers Removed <input type="checkbox"/> Water Line <input checked="" type="checkbox"/> Metal	<input type="checkbox"/> Matting <input type="checkbox"/> Cuttings	<input checked="" type="checkbox"/> Fasing	<input type="checkbox"/> Anchor
12GSE160	Umwelt	2012	430647	7270708	<input type="checkbox"/> Timbers Removed <input type="checkbox"/> Water Line <input type="checkbox"/> Metal	<input type="checkbox"/> Matting <input type="checkbox"/> Cuttings	<input type="checkbox"/> Fasing	<input type="checkbox"/> Anchor
11GSE094	Umwelt	2011	430588	7270665	<input type="checkbox"/> Timbers Removed <input type="checkbox"/> Water Line <input checked="" type="checkbox"/> Metal	<input type="checkbox"/> Matting <input type="checkbox"/> Cuttings	<input checked="" type="checkbox"/> Fasing	<input checked="" type="checkbox"/> Anchor
11GSE089	Umwelt	2011	430626	7270632	<input type="checkbox"/> Timbers Removed <input type="checkbox"/> Water Line <input checked="" type="checkbox"/> Metal	<input type="checkbox"/> Matting <input type="checkbox"/> Cuttings	<input checked="" type="checkbox"/> Fasing	<input checked="" type="checkbox"/> Anchor
11GSE057	Umwelt	2011	430739	7270599	<input type="checkbox"/> Timbers Removed <input type="checkbox"/> Water Line <input checked="" type="checkbox"/> Metal	<input type="checkbox"/> Matting <input checked="" type="checkbox"/> Cuttings	<input checked="" type="checkbox"/> Fasing	<input checked="" type="checkbox"/> Anchor
11GSE088	Umwelt	2011	430782	7270625	<input type="checkbox"/> Timbers Removed <input type="checkbox"/> Water Line <input checked="" type="checkbox"/> Metal	<input type="checkbox"/> Matting <input type="checkbox"/> Cuttings	<input checked="" type="checkbox"/> Fasing	<input checked="" type="checkbox"/> Anchor

Hole Number (s)	Location	Year Drilled	Easting	Northing	Material removed from Site		Material Cut Off	
12GSE233, 233B, 233C	Umwelt	2012	430537	7270553	<input checked="" type="checkbox"/> Timbers Removed <input type="checkbox"/> Water Line <input checked="" type="checkbox"/> Metal	<input type="checkbox"/> Matting <input type="checkbox"/> Cuttings	<input type="checkbox"/> Fasing <input checked="" type="checkbox"/> Anchor	
11GSE033	Umwelt	2011	430511	7270535	<input type="checkbox"/> Timbers Removed <input type="checkbox"/> Water Line <input checked="" type="checkbox"/> Metal	<input type="checkbox"/> Matting <input type="checkbox"/> Cuttings	<input checked="" type="checkbox"/> Fasing <input type="checkbox"/> Anchor	
12GSE232	Umwelt	2012	430920	7270283	<input type="checkbox"/> Timbers Removed <input type="checkbox"/> Water Line <input checked="" type="checkbox"/> Metal	<input type="checkbox"/> Matting <input type="checkbox"/> Cuttings	<input type="checkbox"/> Fasing <input checked="" type="checkbox"/> Anchor	
11GSE080	Umwelt	2011	430574	7270462	<input checked="" type="checkbox"/> Timbers Removed <input type="checkbox"/> Water Line <input checked="" type="checkbox"/> Metal	<input type="checkbox"/> Matting <input checked="" type="checkbox"/> Cuttings	<input checked="" type="checkbox"/> Fasing <input checked="" type="checkbox"/> Anchor	
11GSE092	Umwelt	2011	430569	7270584	<input type="checkbox"/> Timbers Removed <input type="checkbox"/> Water Line <input type="checkbox"/> Metal	<input type="checkbox"/> Matting <input checked="" type="checkbox"/> Cuttings	<input checked="" type="checkbox"/> Fasing <input checked="" type="checkbox"/> Anchor	
12GSE240	Umwelt	2012	430429	7270595	<input checked="" type="checkbox"/> Timbers Removed <input type="checkbox"/> Water Line <input checked="" type="checkbox"/> Metal	<input type="checkbox"/> Matting <input type="checkbox"/> Cuttings	<input type="checkbox"/> Fasing <input type="checkbox"/> Anchor	
11GSE028	Umwelt	2011	430432	7270602	<input checked="" type="checkbox"/> Timbers Removed <input type="checkbox"/> Water Line <input type="checkbox"/> Metal	<input type="checkbox"/> Matting <input type="checkbox"/> Cuttings	<input checked="" type="checkbox"/> Fasing <input type="checkbox"/> Anchor	
11GSE116	Umwelt	2011	430467	7270611	<input checked="" type="checkbox"/> Timbers Removed <input type="checkbox"/> Water Line <input checked="" type="checkbox"/> Metal	<input type="checkbox"/> Matting <input type="checkbox"/> Cuttings	<input checked="" type="checkbox"/> Fasing <input checked="" type="checkbox"/> Anchor	
11GSE105	Umwelt	2011	430509	7270672	<input type="checkbox"/> Timbers Removed <input type="checkbox"/> Water Line <input checked="" type="checkbox"/> Metal	<input type="checkbox"/> Matting <input type="checkbox"/> Cuttings	<input checked="" type="checkbox"/> Fasing <input checked="" type="checkbox"/> Anchor	
12GSE234	Umwelt	2012	430500	7270652	<input type="checkbox"/> Timbers Removed <input type="checkbox"/> Water Line <input checked="" type="checkbox"/> Metal	<input type="checkbox"/> Matting <input type="checkbox"/> Cuttings	<input type="checkbox"/> Fasing <input checked="" type="checkbox"/> Anchor	
11GSE083	Umwelt	2011	430499	7270722	<input type="checkbox"/> Timbers Removed <input type="checkbox"/> Water Line <input checked="" type="checkbox"/> Metal	<input type="checkbox"/> Matting <input type="checkbox"/> Cuttings	<input checked="" type="checkbox"/> Fasing <input checked="" type="checkbox"/> Anchor	
11GSE047	Umwelt	2011	430442	7270739	<input checked="" type="checkbox"/> Timbers Removed <input type="checkbox"/> Water Line <input checked="" type="checkbox"/> Metal	<input type="checkbox"/> Matting <input type="checkbox"/> Cuttings	<input checked="" type="checkbox"/> Fasing <input checked="" type="checkbox"/> Anchor	
11GSE123	Umwelt	2011	430533	7270652	<input type="checkbox"/> Timbers Removed <input type="checkbox"/> Water Line <input checked="" type="checkbox"/> Metal	<input type="checkbox"/> Matting <input type="checkbox"/> Cuttings	<input checked="" type="checkbox"/> Fasing <input checked="" type="checkbox"/> Anchor	
11GSE037	Umwelt	2011	430388	7270699	<input checked="" type="checkbox"/> Timbers Removed <input type="checkbox"/> Water Line <input checked="" type="checkbox"/> Metal	<input type="checkbox"/> Matting <input type="checkbox"/> Cuttings	<input checked="" type="checkbox"/> Fasing <input checked="" type="checkbox"/> Anchor	
11GSE043	Umwelt	2011	430389	7270701	<input checked="" type="checkbox"/> Timbers Removed <input type="checkbox"/> Water Line <input checked="" type="checkbox"/> Metal	<input type="checkbox"/> Matting <input type="checkbox"/> Cuttings	<input checked="" type="checkbox"/> Fasing <input checked="" type="checkbox"/> Anchor	
11GSE096	Umwelt	2011	430347	7270728	<input type="checkbox"/> Timbers Removed <input type="checkbox"/> Water Line <input checked="" type="checkbox"/> Metal	<input type="checkbox"/> Matting <input type="checkbox"/> Cuttings	<input type="checkbox"/> Fasing <input checked="" type="checkbox"/> Anchor	
11GSE125	Umwelt	2011	430315	7270702	<input type="checkbox"/> Timbers Removed <input type="checkbox"/> Water Line <input checked="" type="checkbox"/> Metal	<input type="checkbox"/> Matting <input type="checkbox"/> Cuttings	<input type="checkbox"/> Fasing <input checked="" type="checkbox"/> Anchor	
11GSE050	Umwelt	2011	430507	7270792	<input type="checkbox"/> Timbers Removed <input type="checkbox"/> Water Line <input type="checkbox"/> Metal	<input checked="" type="checkbox"/> Matting <input type="checkbox"/> Cuttings	<input checked="" type="checkbox"/> Fasing <input checked="" type="checkbox"/> Anchor	
11GSE122	Umwelt	2011	430342	7270789	<input checked="" type="checkbox"/> Timbers Removed <input type="checkbox"/> Water Line <input checked="" type="checkbox"/> Metal	<input type="checkbox"/> Matting <input type="checkbox"/> Cuttings	<input checked="" type="checkbox"/> Fasing <input checked="" type="checkbox"/> Anchor	
11GSE109	Umwelt	2011	430351	7270795	<input checked="" type="checkbox"/> Timbers Removed <input type="checkbox"/> Water Line <input checked="" type="checkbox"/> Metal	<input type="checkbox"/> Matting <input type="checkbox"/> Cuttings	<input type="checkbox"/> Fasing <input checked="" type="checkbox"/> Anchor	
11GSE052	Umwelt	2011	430298	7270752	<input checked="" type="checkbox"/> Timbers Removed <input type="checkbox"/> Water Line <input checked="" type="checkbox"/> Metal	<input type="checkbox"/> Matting <input type="checkbox"/> Cuttings	<input checked="" type="checkbox"/> Fasing <input checked="" type="checkbox"/> Anchor	
11GSE118	Umwelt	2011	430268	7270787	<input checked="" type="checkbox"/> Timbers Removed <input type="checkbox"/> Water Line <input checked="" type="checkbox"/> Metal	<input checked="" type="checkbox"/> Matting <input type="checkbox"/> Cuttings	<input checked="" type="checkbox"/> Fasing <input checked="" type="checkbox"/> Anchor	
11GSE023	Umwelt	2011	430245	7270707	<input type="checkbox"/> Timbers Removed <input type="checkbox"/> Water Line <input type="checkbox"/> Metal	<input type="checkbox"/> Matting <input type="checkbox"/> Cuttings	<input checked="" type="checkbox"/> Fasing <input type="checkbox"/> Anchor	
11GSE026	Umwelt	2011	430331	7270651	<input checked="" type="checkbox"/> Timbers Removed <input type="checkbox"/> Water Line <input checked="" type="checkbox"/> Metal	<input type="checkbox"/> Matting <input type="checkbox"/> Cuttings	<input checked="" type="checkbox"/> Fasing <input type="checkbox"/> Anchor	
11GSE031	Umwelt	2011	430233	7270761	<input type="checkbox"/> Timbers Removed <input type="checkbox"/> Water Line <input checked="" type="checkbox"/> Metal	<input type="checkbox"/> Matting <input type="checkbox"/> Cuttings	<input checked="" type="checkbox"/> Fasing <input type="checkbox"/> Anchor	
11GSE128	Umwelt	2011	430198	7270765	<input type="checkbox"/> Timbers Removed <input type="checkbox"/> Water Line <input checked="" type="checkbox"/> Metal	<input checked="" type="checkbox"/> Matting <input type="checkbox"/> Cuttings	<input checked="" type="checkbox"/> Fasing <input checked="" type="checkbox"/> Anchor	
11GSE078	Umwelt	2011	430195	7270727	<input type="checkbox"/> Timbers Removed <input type="checkbox"/> Water Line <input type="checkbox"/> Metal	<input type="checkbox"/> Matting <input type="checkbox"/> Cuttings	<input checked="" type="checkbox"/> Fasing <input checked="" type="checkbox"/> Anchor	
12GSE208	Umwelt	2012	430183	7270748	<input checked="" type="checkbox"/> Timbers Removed <input type="checkbox"/> Water Line <input type="checkbox"/> Metal	<input type="checkbox"/> Matting <input type="checkbox"/> Cuttings	<input type="checkbox"/> Fasing <input checked="" type="checkbox"/> Anchor	
10GSE126	Umwelt	2010	430147	7270820	<input type="checkbox"/> Timbers Removed <input type="checkbox"/> Water Line <input checked="" type="checkbox"/> Metal	<input type="checkbox"/> Matting <input type="checkbox"/> Cuttings	<input checked="" type="checkbox"/> Fasing <input checked="" type="checkbox"/> Anchor	

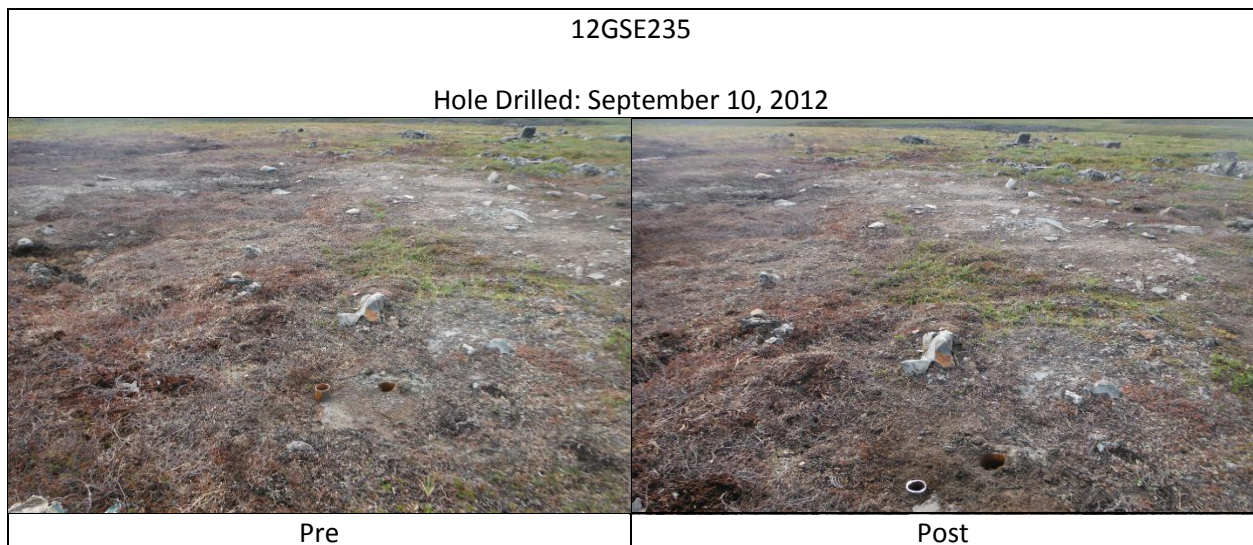
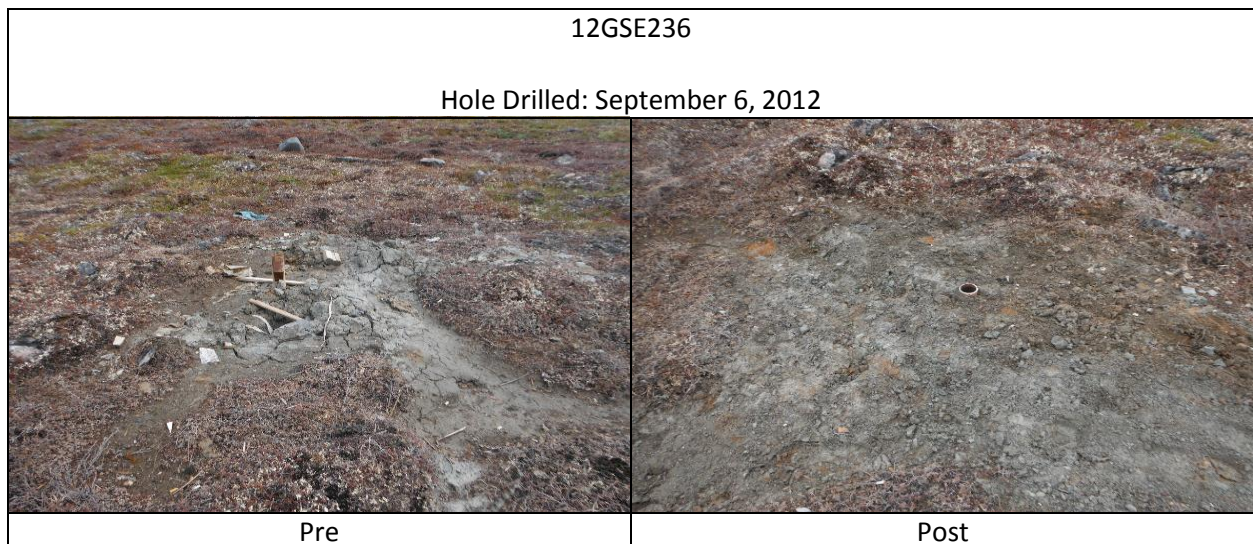
Hole Number (s)	Location	Year Drilled	Easting	Northing	Material removed from Site		Material Cut Off	
10GSE132	Umwelt	2010	430218	7270814	<input type="checkbox"/> Timbers Removed <input type="checkbox"/> Water Line <input type="checkbox"/> Metal	<input type="checkbox"/> Matting <input type="checkbox"/> Cuttings	<input checked="" type="checkbox"/> Fasing	<input checked="" type="checkbox"/> Anchor
10GSE137	Umwelt	2010	430145	7270753	<input type="checkbox"/> Timbers Removed <input type="checkbox"/> Water Line <input checked="" type="checkbox"/> Metal	<input checked="" type="checkbox"/> Matting <input type="checkbox"/> Cuttings	<input checked="" type="checkbox"/> Fasing	<input checked="" type="checkbox"/> Anchor
11GSE006	Umwelt	2011	430252	7270843	<input type="checkbox"/> Timbers Removed <input type="checkbox"/> Water Line <input checked="" type="checkbox"/> Metal	<input type="checkbox"/> Matting <input type="checkbox"/> Cuttings	<input checked="" type="checkbox"/> Fasing	<input type="checkbox"/> Anchor
11GSE001	Umwelt	2011	430200	7270864	<input type="checkbox"/> Timbers Removed <input type="checkbox"/> Water Line <input checked="" type="checkbox"/> Metal	<input type="checkbox"/> Matting <input type="checkbox"/> Cuttings	<input checked="" type="checkbox"/> Fasing	<input type="checkbox"/> Anchor
11GSE114	Umwelt	2011	430196	7270906	<input type="checkbox"/> Timbers Removed <input type="checkbox"/> Water Line <input type="checkbox"/> Metal	<input type="checkbox"/> Matting <input type="checkbox"/> Cuttings	<input checked="" type="checkbox"/> Fasing	<input checked="" type="checkbox"/> Anchor
10GSE146	Umwelt	2010	430149	7270887	<input type="checkbox"/> Timbers Removed <input type="checkbox"/> Water Line <input checked="" type="checkbox"/> Metal	<input type="checkbox"/> Matting <input type="checkbox"/> Cuttings	<input checked="" type="checkbox"/> Fasing	<input checked="" type="checkbox"/> Anchor
12GSE229	Umwelt	2012	430236	7270952	<input type="checkbox"/> Timbers Removed <input type="checkbox"/> Water Line <input checked="" type="checkbox"/> Metal	<input type="checkbox"/> Matting <input type="checkbox"/> Cuttings	<input type="checkbox"/> Fasing	<input checked="" type="checkbox"/> Anchor
11GSE127	Umwelt	2011	430265	7270917	<input checked="" type="checkbox"/> Timbers Removed <input type="checkbox"/> Water Line <input checked="" type="checkbox"/> Metal	<input type="checkbox"/> Matting <input type="checkbox"/> Cuttings	<input checked="" type="checkbox"/> Fasing	<input checked="" type="checkbox"/> Anchor
11GSE048	Umwelt	2011	430303	7270885	<input type="checkbox"/> Timbers Removed <input type="checkbox"/> Water Line <input type="checkbox"/> Metal	<input checked="" type="checkbox"/> Matting <input type="checkbox"/> Cuttings	<input checked="" type="checkbox"/> Fasing	<input checked="" type="checkbox"/> Anchor
12GSE194, 194W1, 194W2	Umwelt	2012	430818	7270463	<input type="checkbox"/> Timbers Removed <input type="checkbox"/> Water Line <input checked="" type="checkbox"/> Metal	<input type="checkbox"/> Matting <input checked="" type="checkbox"/> Cuttings	<input type="checkbox"/> Fasing	<input checked="" type="checkbox"/> Anchor
11GSE055	Umwelt	2011	430539	7270691	<input type="checkbox"/> Timbers Removed <input type="checkbox"/> Water Line <input checked="" type="checkbox"/> Metal	<input type="checkbox"/> Matting <input type="checkbox"/> Cuttings	<input checked="" type="checkbox"/> Fasing	<input checked="" type="checkbox"/> Anchor
11GSE074	Umwelt	2011	430438	7270670	<input checked="" type="checkbox"/> Timbers Removed <input type="checkbox"/> Water Line <input checked="" type="checkbox"/> Metal	<input type="checkbox"/> Matting <input type="checkbox"/> Cuttings	<input checked="" type="checkbox"/> Fasing	<input checked="" type="checkbox"/> Anchor
11GSE040	Umwelt	2011	430316	7270831	<input checked="" type="checkbox"/> Timbers Removed <input type="checkbox"/> Water Line <input checked="" type="checkbox"/> Metal	<input type="checkbox"/> Matting <input checked="" type="checkbox"/> Cuttings	<input checked="" type="checkbox"/> Fasing	<input checked="" type="checkbox"/> Anchor
11GSE061	Umwelt	2011	430287	7270675	<input type="checkbox"/> Timbers Removed <input type="checkbox"/> Water Line <input checked="" type="checkbox"/> Metal	<input type="checkbox"/> Matting <input type="checkbox"/> Cuttings	<input checked="" type="checkbox"/> Fasing	<input checked="" type="checkbox"/> Anchor
11GSE056	Umwelt	2011	430402	7270835	<input type="checkbox"/> Timbers Removed <input type="checkbox"/> Water Line <input checked="" type="checkbox"/> Metal	<input type="checkbox"/> Matting <input type="checkbox"/> Cuttings	<input checked="" type="checkbox"/> Fasing	<input checked="" type="checkbox"/> Anchor
11GSE045	Umwelt	2011	430384	7270889	<input type="checkbox"/> Timbers Removed <input type="checkbox"/> Water Line <input checked="" type="checkbox"/> Metal	<input type="checkbox"/> Matting <input type="checkbox"/> Cuttings	<input checked="" type="checkbox"/> Fasing	<input checked="" type="checkbox"/> Anchor
12GSE163	Umwelt	2012	430474	7270564	<input type="checkbox"/> Timbers Removed <input type="checkbox"/> Water Line <input checked="" type="checkbox"/> Metal	<input type="checkbox"/> Matting <input type="checkbox"/> Cuttings	<input checked="" type="checkbox"/> Fasing	<input type="checkbox"/> Anchor
11GSE102, 102B, 102BW	Umwelt	2011	430690	7270494	<input checked="" type="checkbox"/> Timbers Removed <input type="checkbox"/> Water Line <input checked="" type="checkbox"/> Metal	<input type="checkbox"/> Matting <input type="checkbox"/> Cuttings	<input checked="" type="checkbox"/> Fasing	<input checked="" type="checkbox"/> Anchor
10GSE83, 10GSE81	Umwelt	2010	429945	7270912	<input type="checkbox"/> Timbers Removed <input type="checkbox"/> Water Line <input checked="" type="checkbox"/> Metal	<input type="checkbox"/> Matting <input type="checkbox"/> Cuttings	<input checked="" type="checkbox"/> Fasing	<input checked="" type="checkbox"/> Anchor
10GSE119	Umwelt	2010	430091	7270839	<input checked="" type="checkbox"/> Timbers Removed <input type="checkbox"/> Water Line <input checked="" type="checkbox"/> Metal	<input type="checkbox"/> Matting <input type="checkbox"/> Cuttings	<input type="checkbox"/> Fasing	<input checked="" type="checkbox"/> Anchor
10GSE117	Umwelt	2010	430055	7270875	<input type="checkbox"/> Timbers Removed <input type="checkbox"/> Water Line <input type="checkbox"/> Metal	<input type="checkbox"/> Matting <input checked="" type="checkbox"/> Cuttings	<input type="checkbox"/> Fasing	<input type="checkbox"/> Anchor
10GSE112	Umwelt	2010	430005	7270897	<input type="checkbox"/> Timbers Removed <input type="checkbox"/> Water Line <input checked="" type="checkbox"/> Metal	<input type="checkbox"/> Matting <input checked="" type="checkbox"/> Cuttings	<input type="checkbox"/> Fasing	<input type="checkbox"/> Anchor
11GSE108	Umwelt	2011	429990	7271015	<input checked="" type="checkbox"/> Timbers Removed <input type="checkbox"/> Water Line <input checked="" type="checkbox"/> Metal	<input type="checkbox"/> Matting <input type="checkbox"/> Cuttings	<input checked="" type="checkbox"/> Fasing	<input checked="" type="checkbox"/> Anchor
11GSE099	Umwelt	2011	430112	7270915	<input checked="" type="checkbox"/> Timbers Removed <input type="checkbox"/> Water Line <input checked="" type="checkbox"/> Metal	<input checked="" type="checkbox"/> Matting <input type="checkbox"/> Cuttings	<input type="checkbox"/> Fasing	<input type="checkbox"/> Anchor
11GSE130	Umwelt	2011	430084	7270930	<input type="checkbox"/> Timbers Removed <input type="checkbox"/> Water Line <input checked="" type="checkbox"/> Metal	<input type="checkbox"/> Matting <input type="checkbox"/> Cuttings	<input type="checkbox"/> Fasing	<input type="checkbox"/> Anchor
10GSE142	Umwelt	2010	430061	7270944	<input checked="" type="checkbox"/> Timbers Removed <input type="checkbox"/> Water Line <input checked="" type="checkbox"/> Metal	<input type="checkbox"/> Matting <input checked="" type="checkbox"/> Cuttings	<input type="checkbox"/> Fasing	<input type="checkbox"/> Anchor
10GSE150	Umwelt	2010	430009	7270966	<input type="checkbox"/> Timbers Removed <input type="checkbox"/> Water Line <input type="checkbox"/> Metal	<input type="checkbox"/> Matting <input checked="" type="checkbox"/> Cuttings	<input checked="" type="checkbox"/> Fasing	<input checked="" type="checkbox"/> Anchor
12GSE227	Umwelt	2012	430116	7270983	<input checked="" type="checkbox"/> Timbers Removed <input type="checkbox"/> Water Line <input checked="" type="checkbox"/> Metal	<input type="checkbox"/> Matting <input checked="" type="checkbox"/> Cuttings	<input type="checkbox"/> Fasing	<input checked="" type="checkbox"/> Anchor
10GSE073	Umwelt	2010	429840	7270949	<input checked="" type="checkbox"/> Timbers Removed <input type="checkbox"/> Water Line <input checked="" type="checkbox"/> Metal	<input type="checkbox"/> Matting <input checked="" type="checkbox"/> Cuttings	<input checked="" type="checkbox"/> Fasing	<input checked="" type="checkbox"/> Anchor

Hole Number (s)	Location	Year Drilled	Easting	Northing	Material removed from Site		Material Cut Off	
10GSE136	Umwelt	2010	429888	7270926	<input checked="" type="checkbox"/> Timbers Removed	<input type="checkbox"/> Matting	<input type="checkbox"/> Casing	<input checked="" type="checkbox"/> Anchor
					<input type="checkbox"/> Water Line	<input checked="" type="checkbox"/> Cuttings		
					<input checked="" type="checkbox"/> Metal			
10GSE109	Umwelt	2010	429785	7270908	<input type="checkbox"/> Timbers Removed	<input type="checkbox"/> Matting	<input checked="" type="checkbox"/> Casing	<input checked="" type="checkbox"/> Anchor
					<input type="checkbox"/> Water Line	<input type="checkbox"/> Cuttings		
					<input type="checkbox"/> Metal			
10GSE122	Umwelt	2010	429720	7270920	<input type="checkbox"/> Timbers Removed	<input type="checkbox"/> Matting	<input type="checkbox"/> Casing	<input checked="" type="checkbox"/> Anchor
					<input type="checkbox"/> Water Line	<input checked="" type="checkbox"/> Cuttings		
					<input checked="" type="checkbox"/> Metal			
97LA-007	Umwelt	1997	429709	7270854	<input checked="" type="checkbox"/> Timbers Removed	<input type="checkbox"/> Matting	<input type="checkbox"/> Casing	<input checked="" type="checkbox"/> Anchor
					<input type="checkbox"/> Water Line	<input checked="" type="checkbox"/> Cuttings		
					<input checked="" type="checkbox"/> Metal			

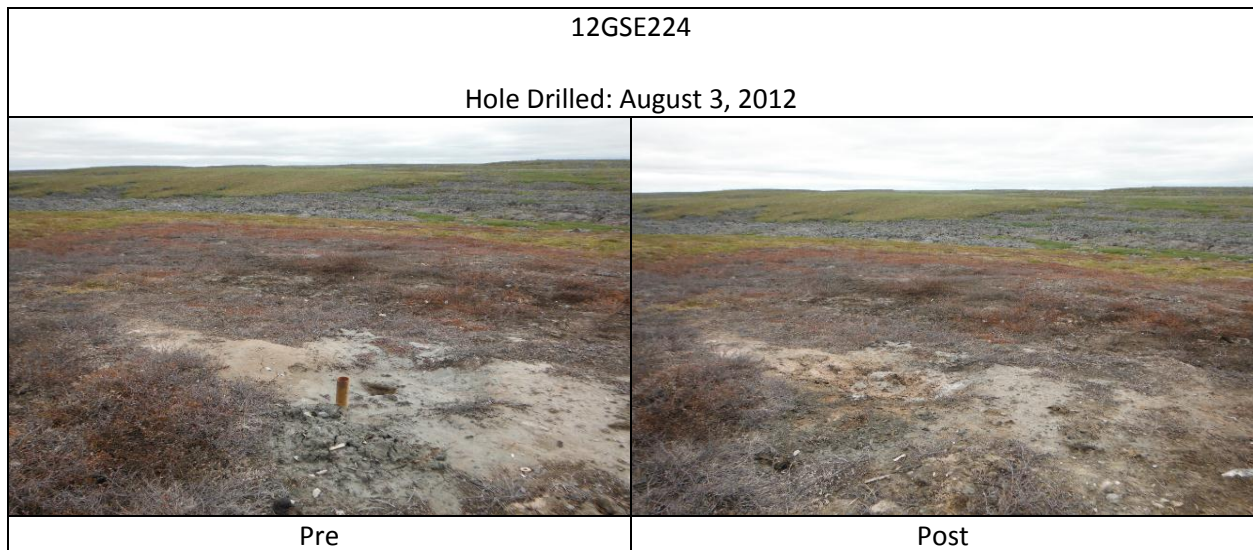
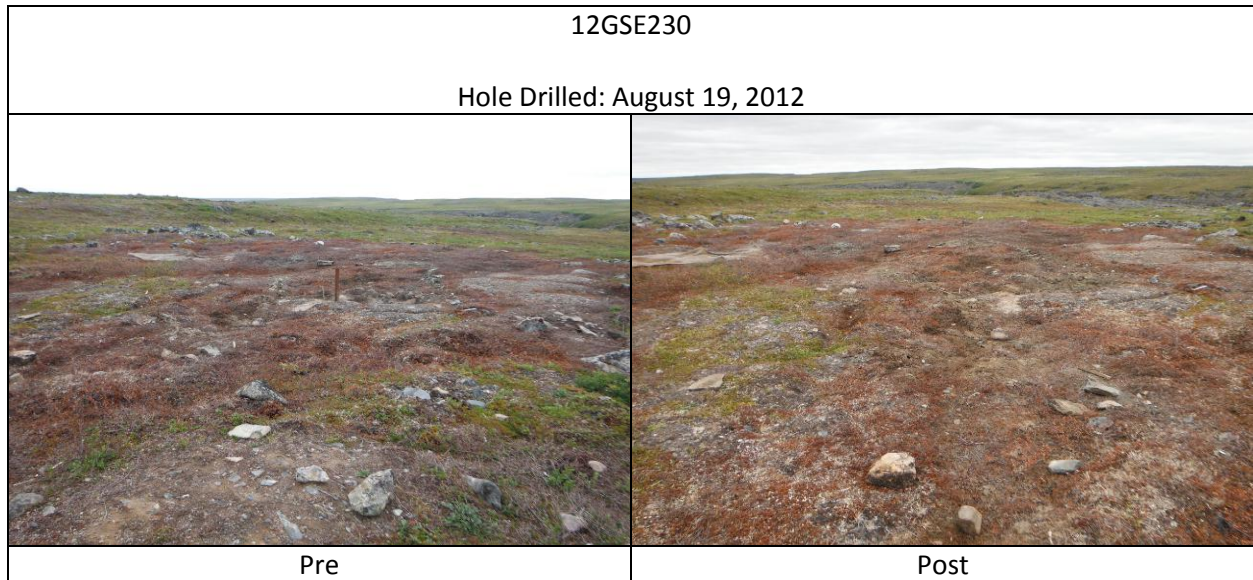
2013 Historical Drill Site Reclamation



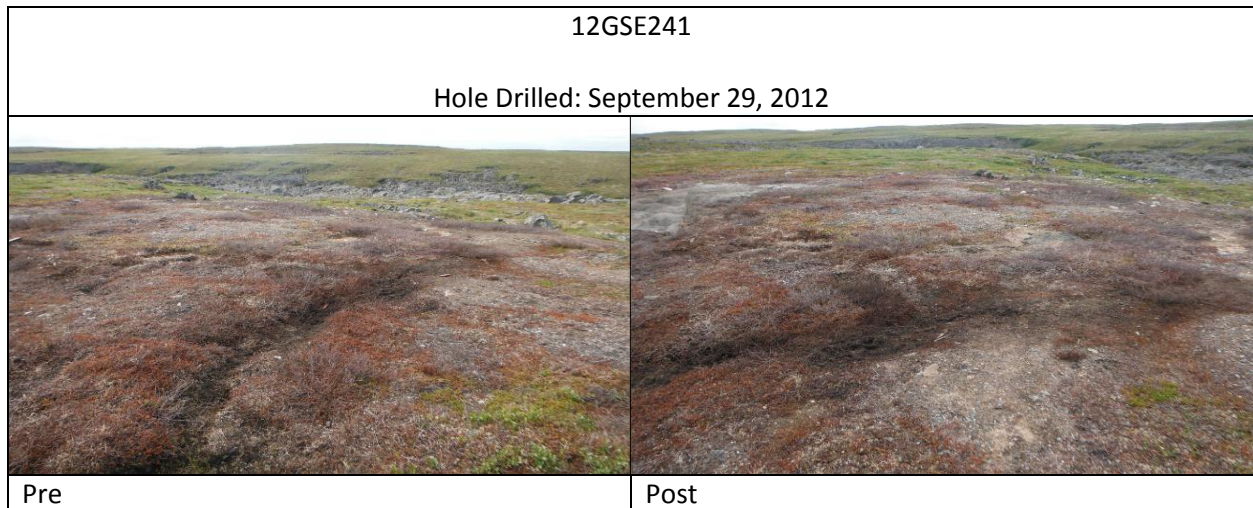
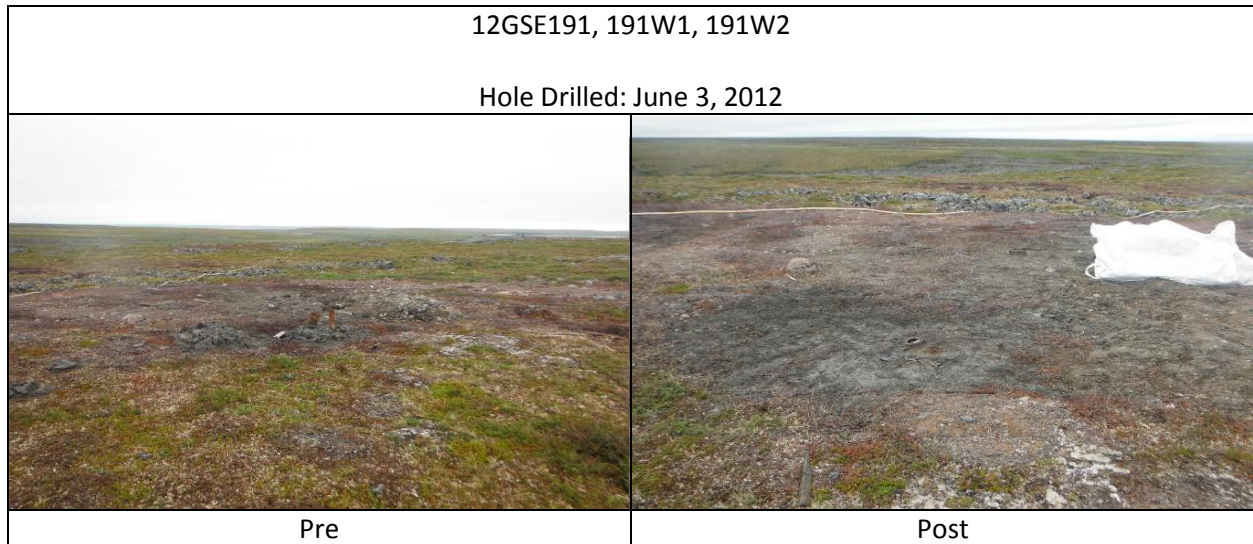
2013 Historical Drill Site Reclamation



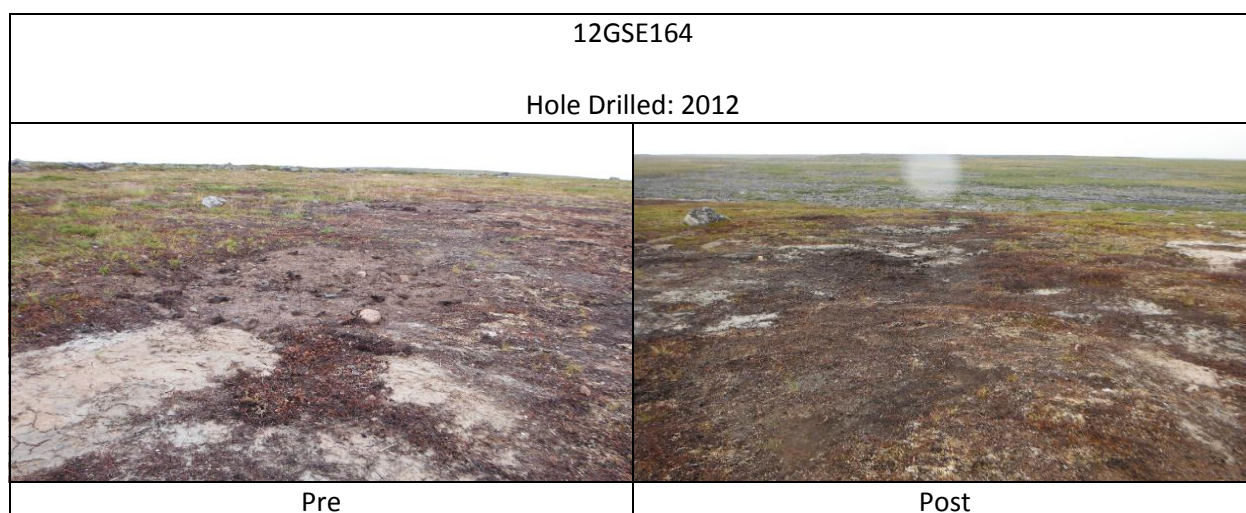
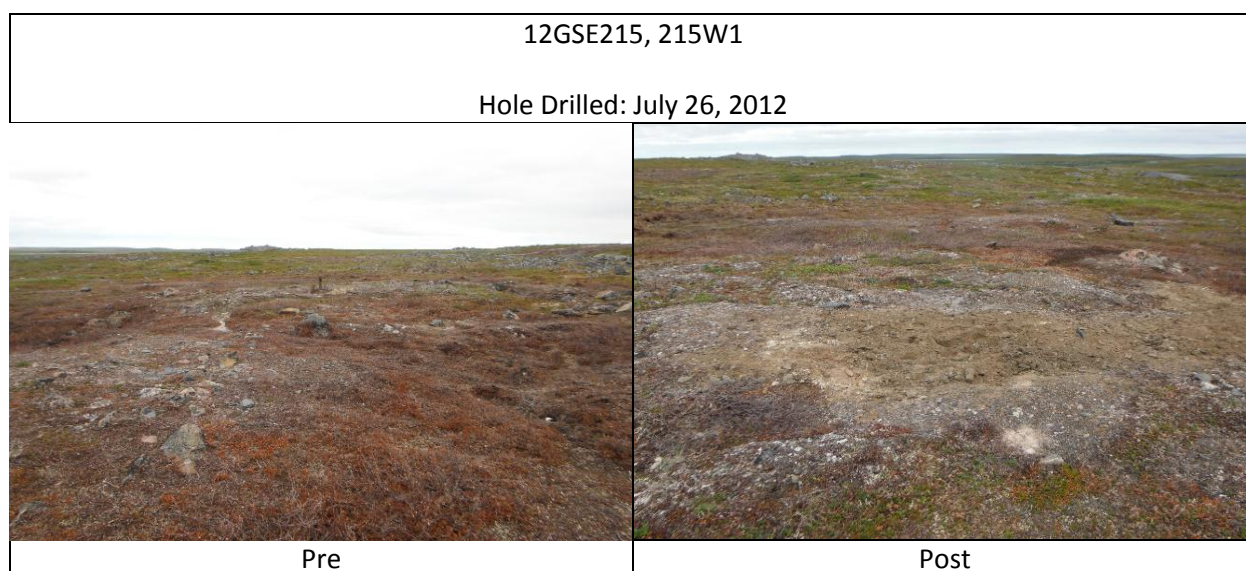
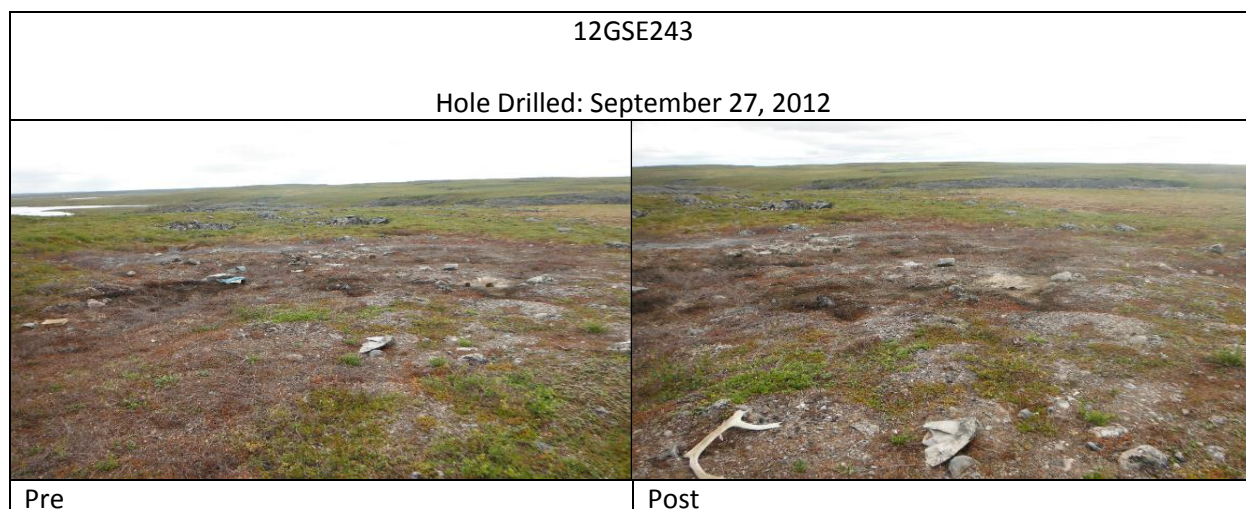
2013 Historical Drill Site Reclamation



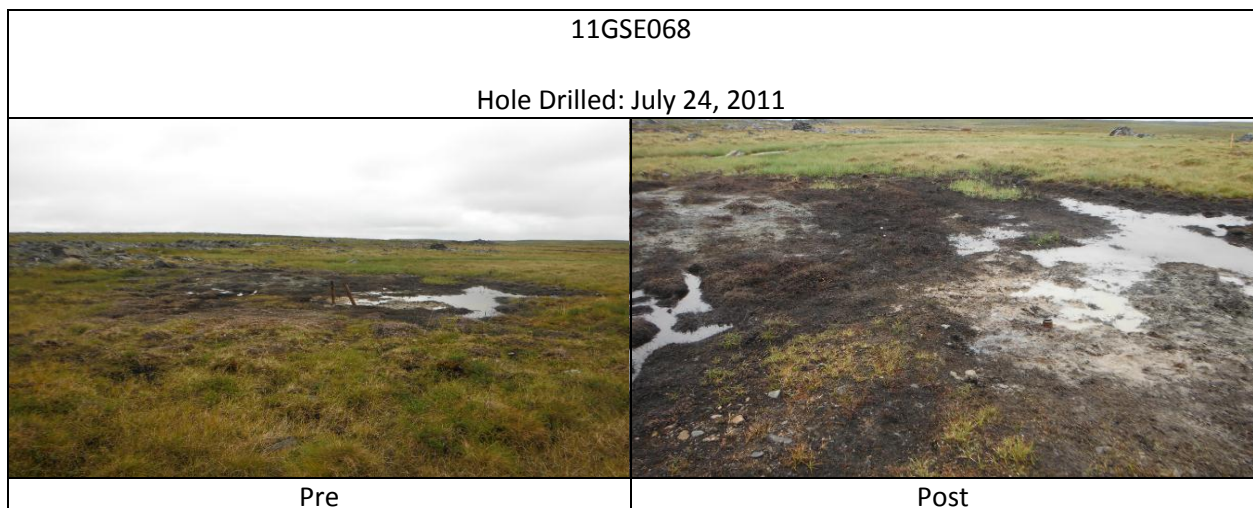
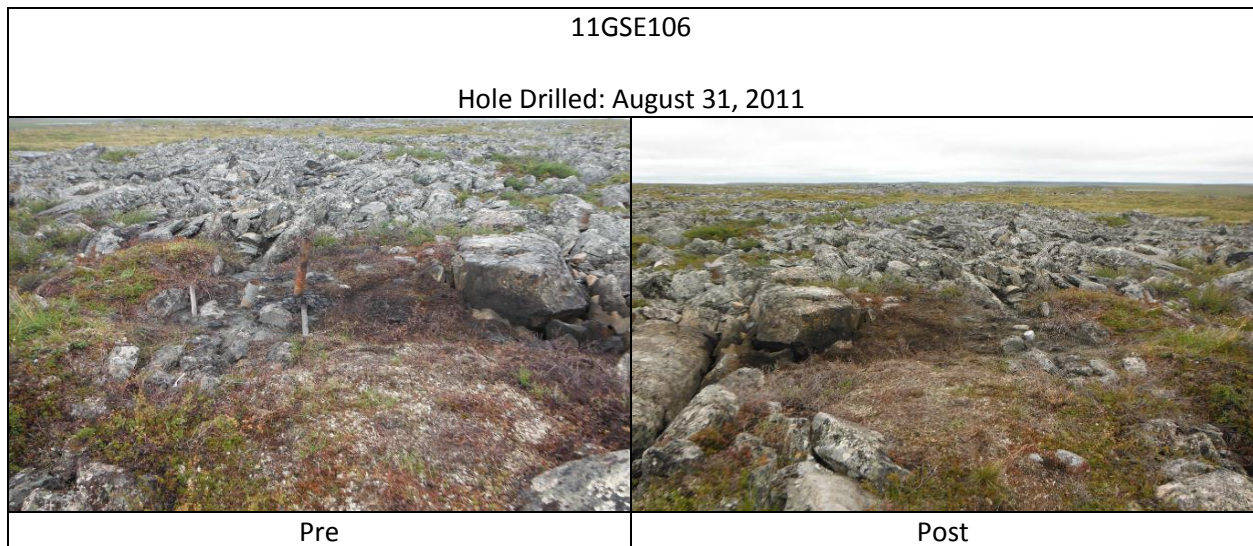
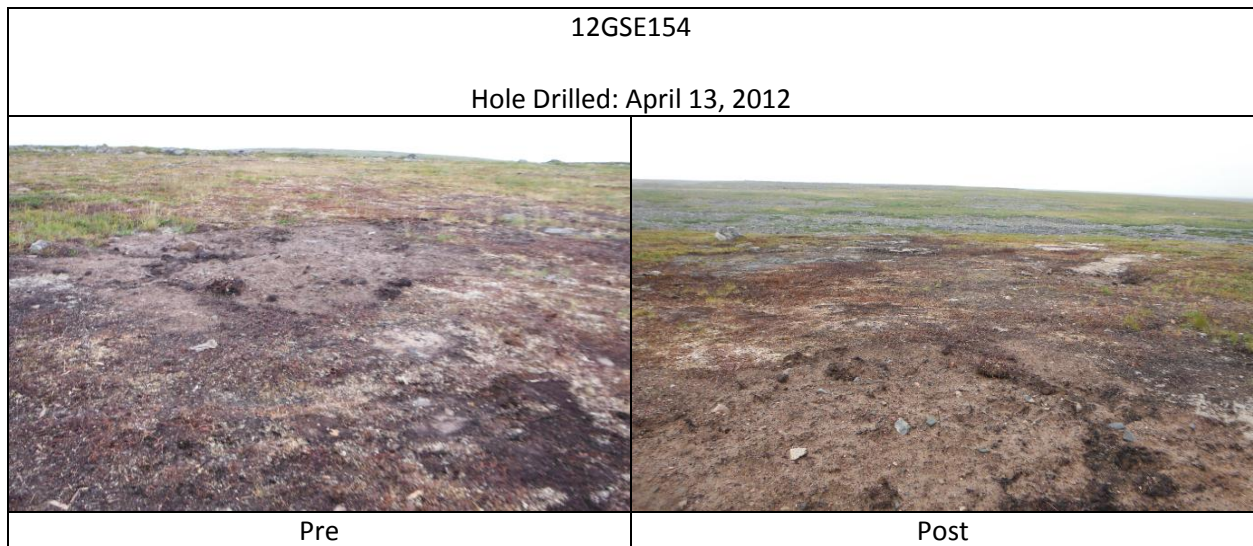
2013 Historical Drill Site Reclamation



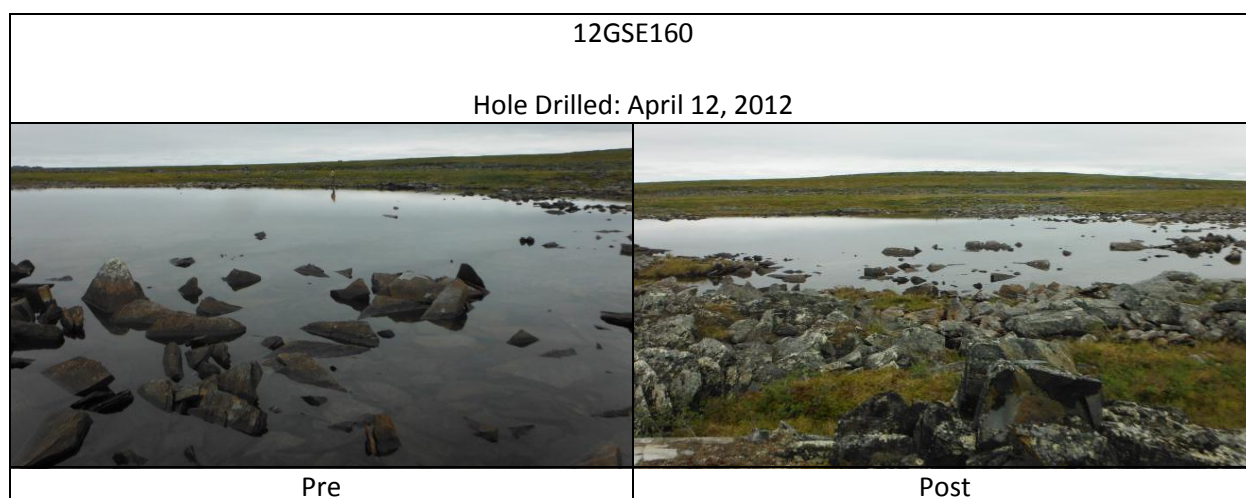
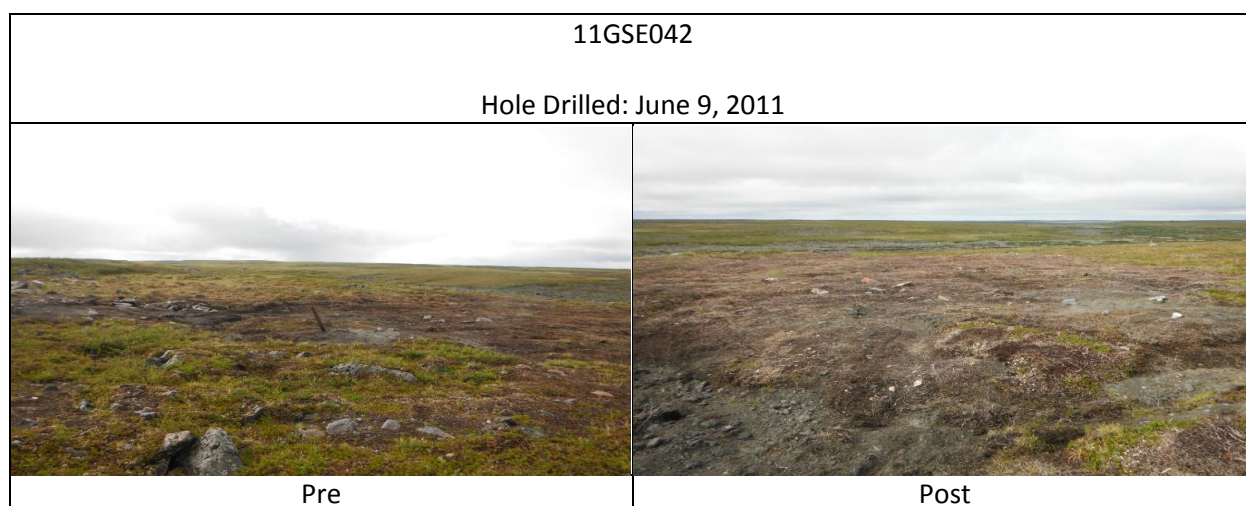
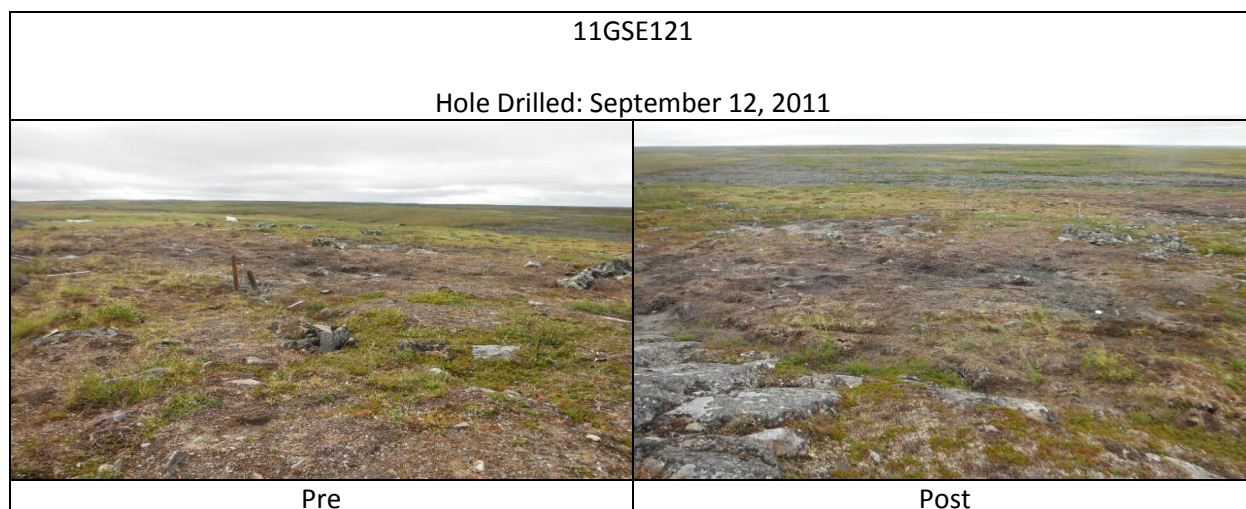
2013 Historical Drill Site Reclamation



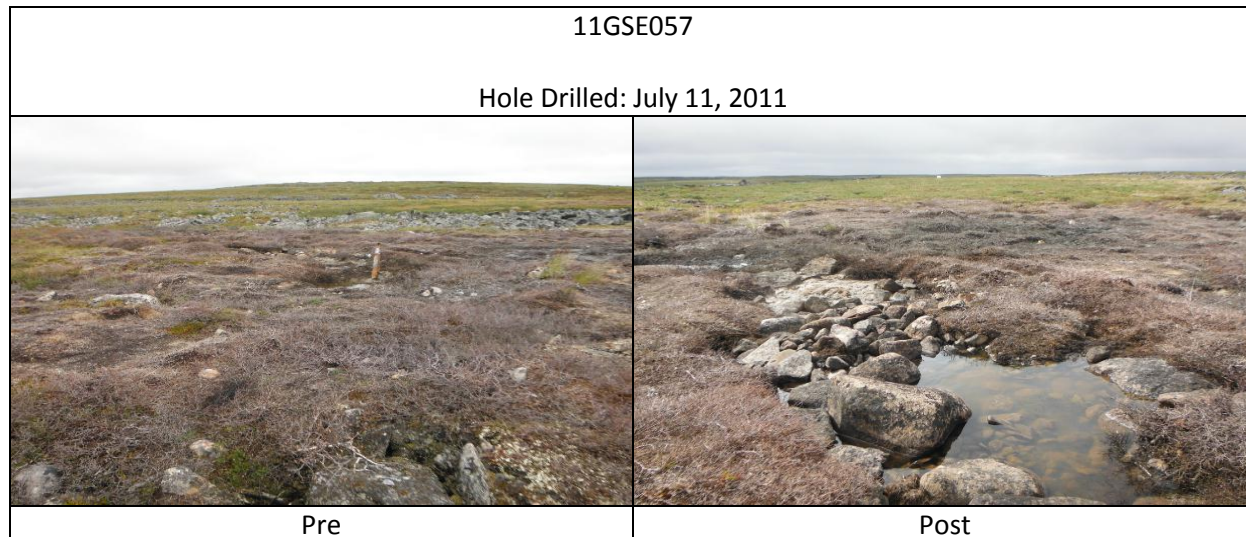
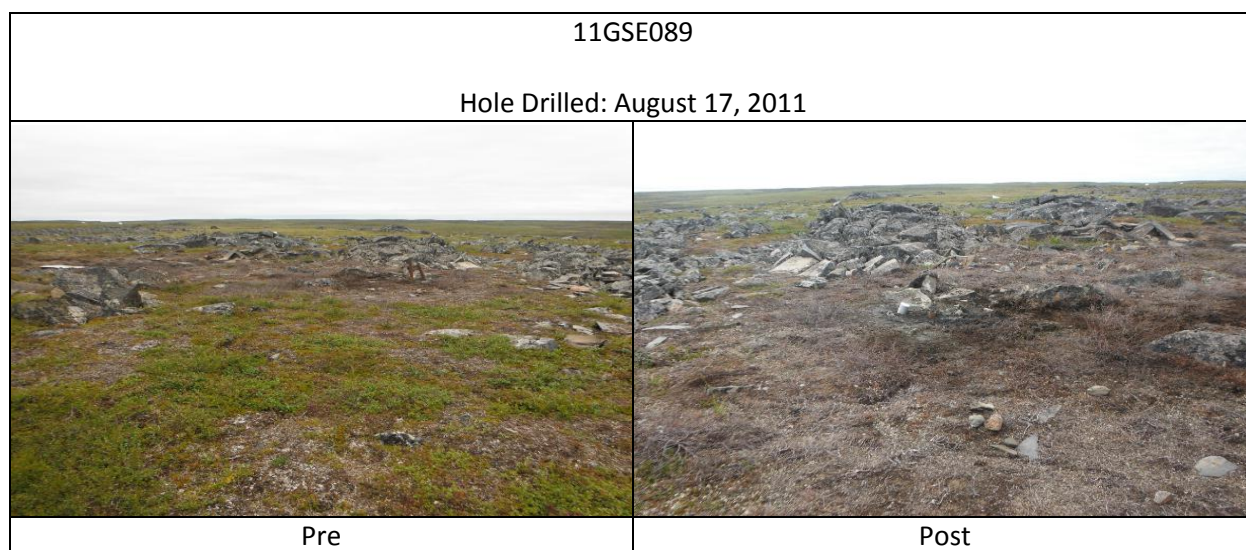
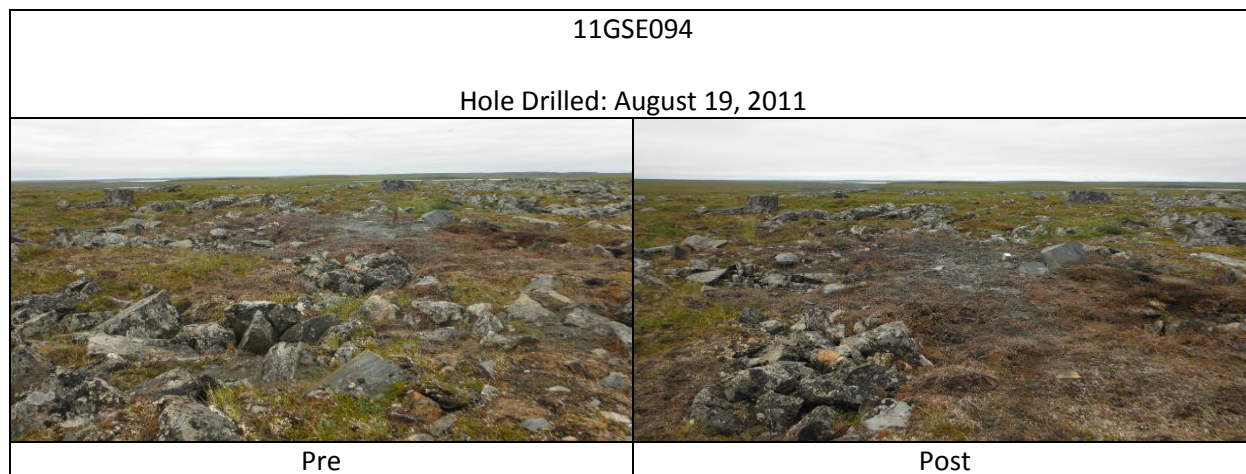
2013 Historical Drill Site Reclamation



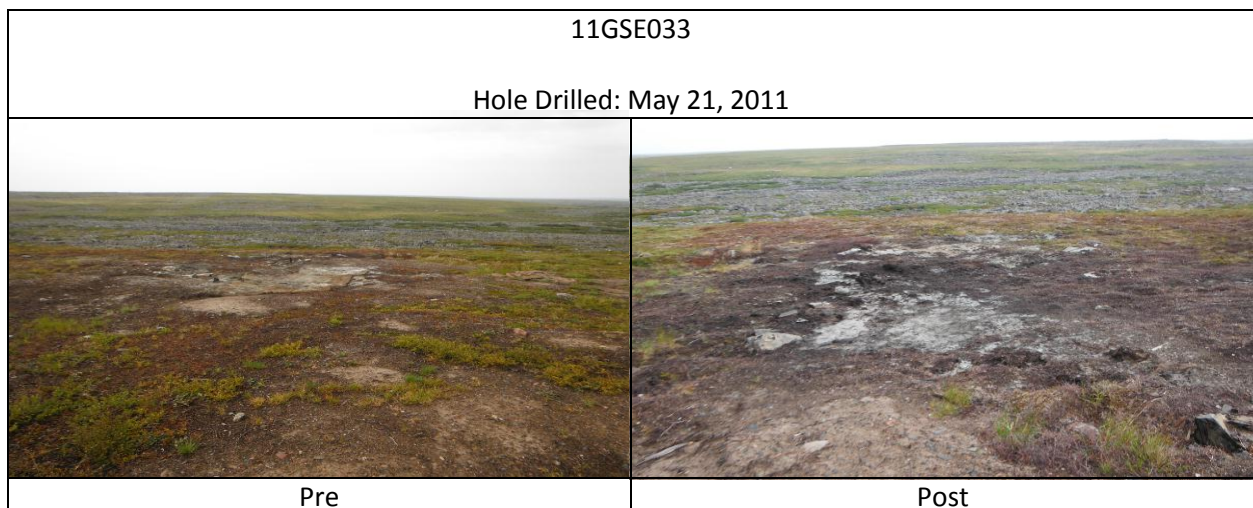
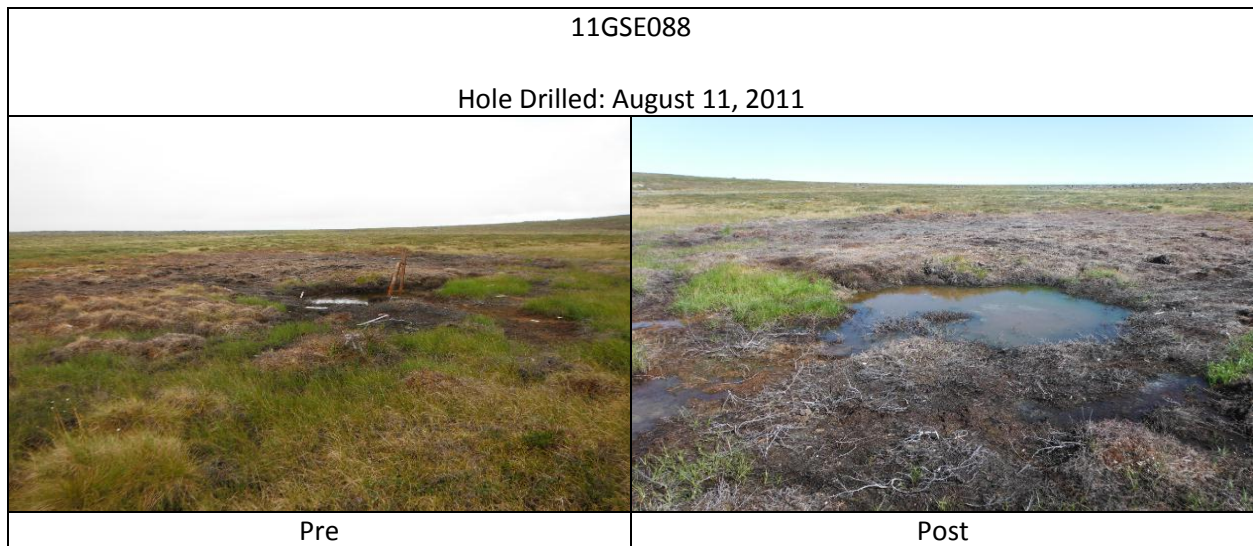
2013 Historical Drill Site Reclamation



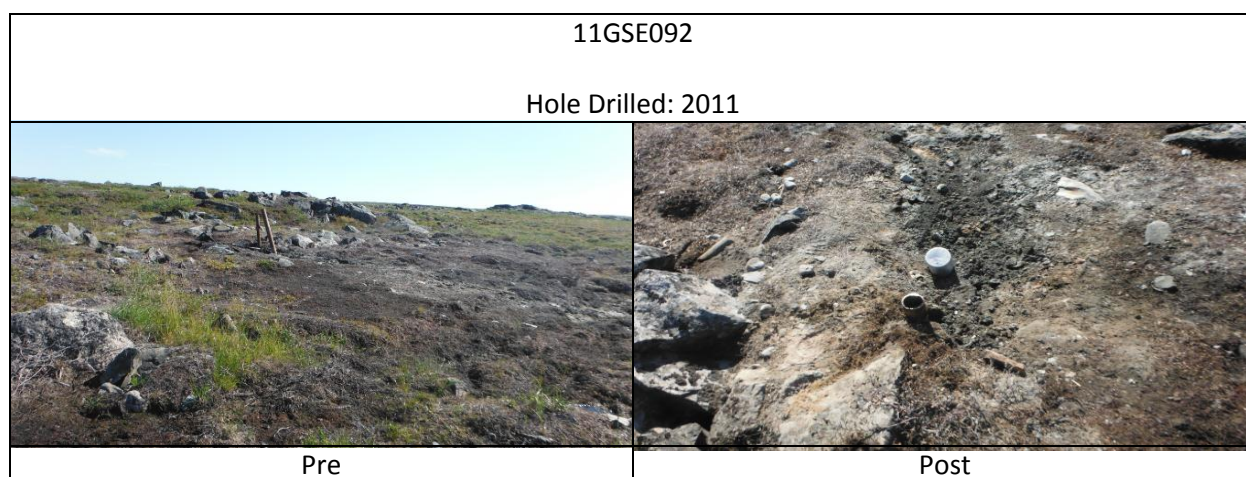
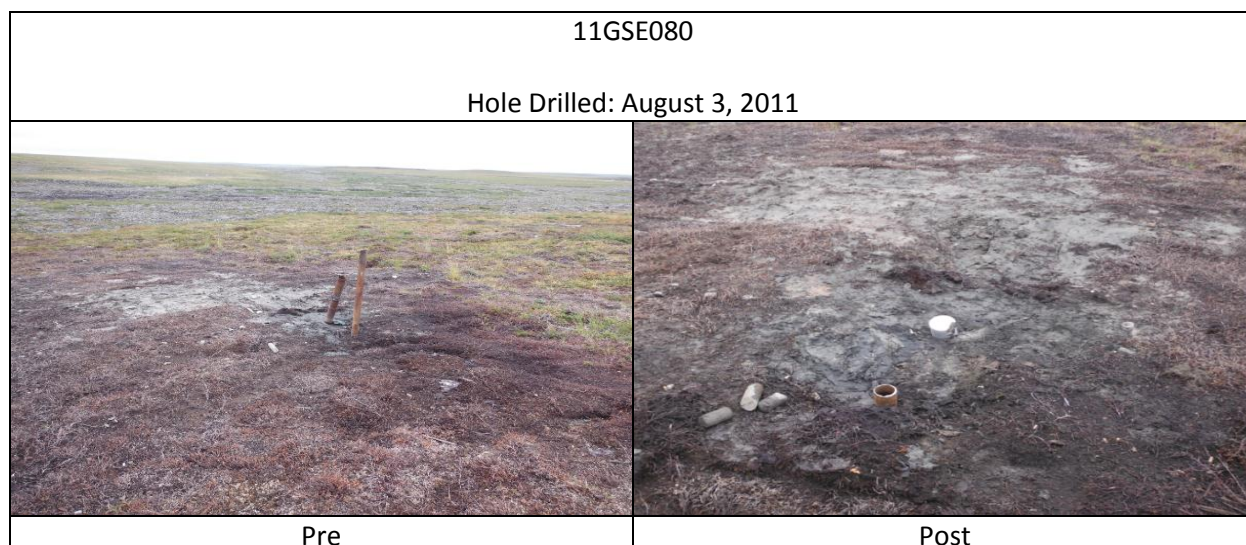
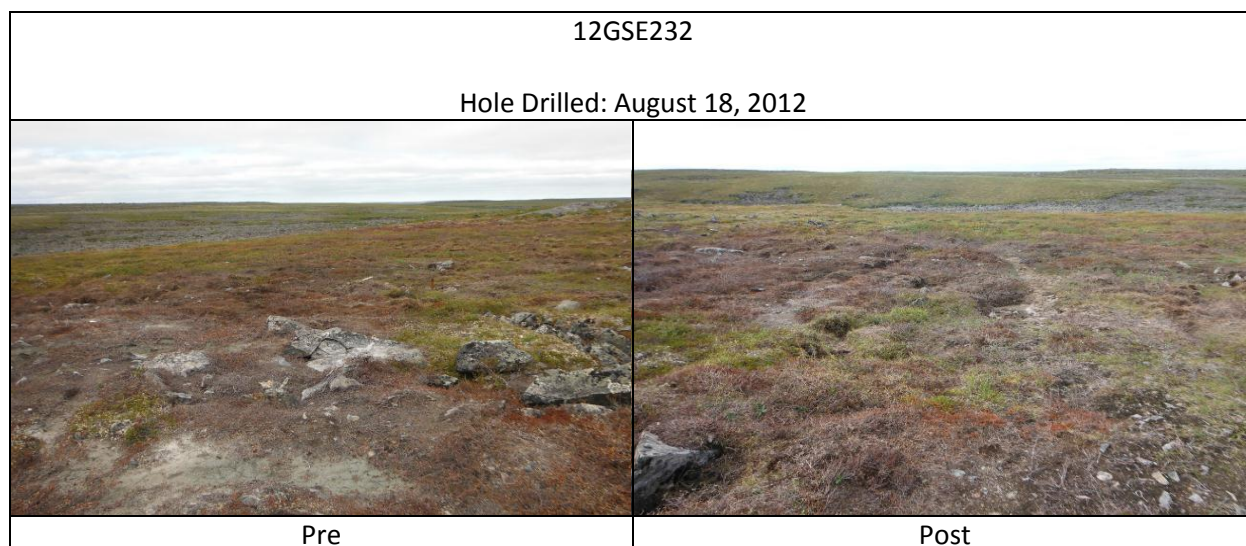
2013 Historical Drill Site Reclamation



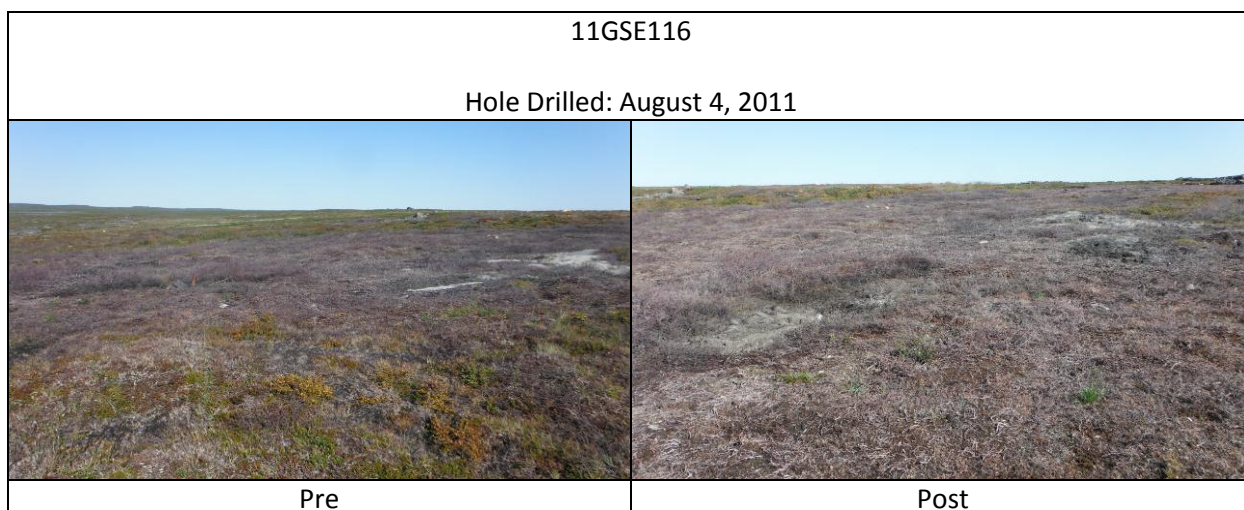
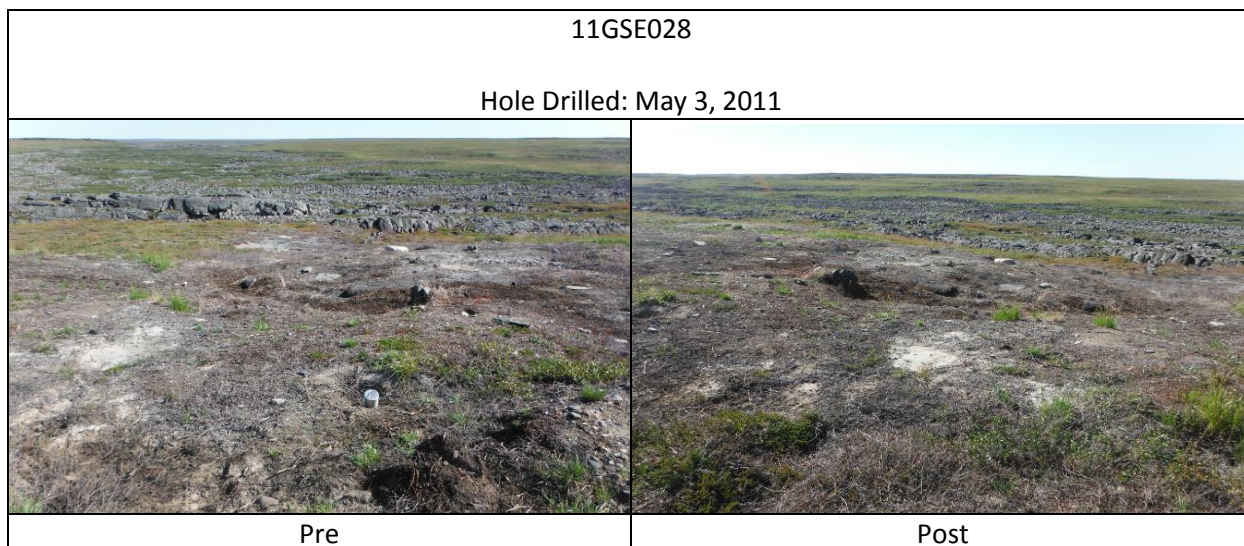
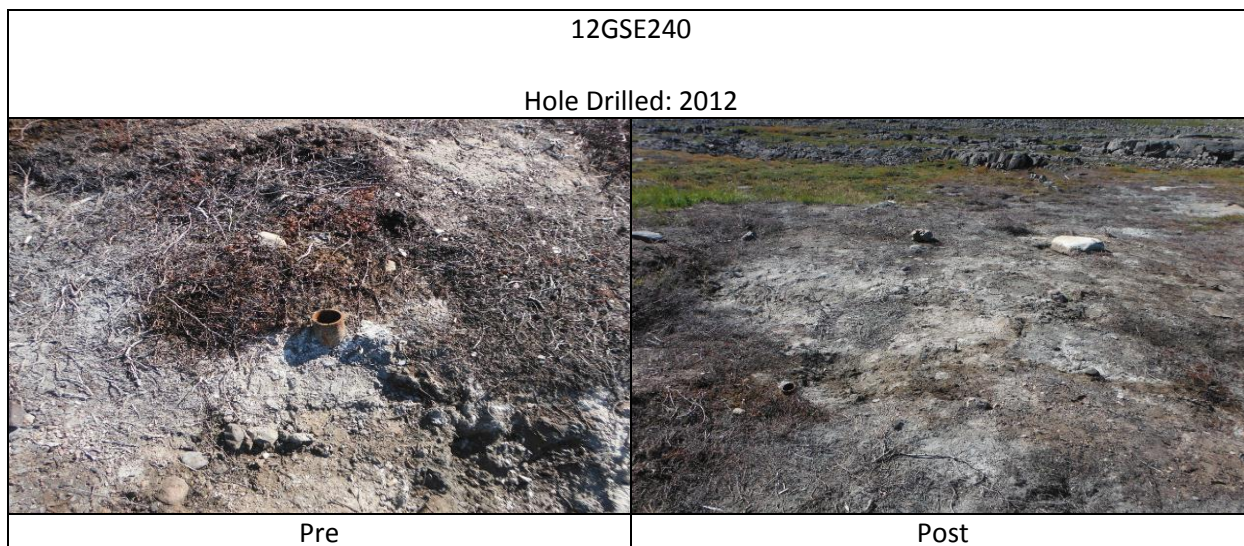
2013 Historical Drill Site Reclamation



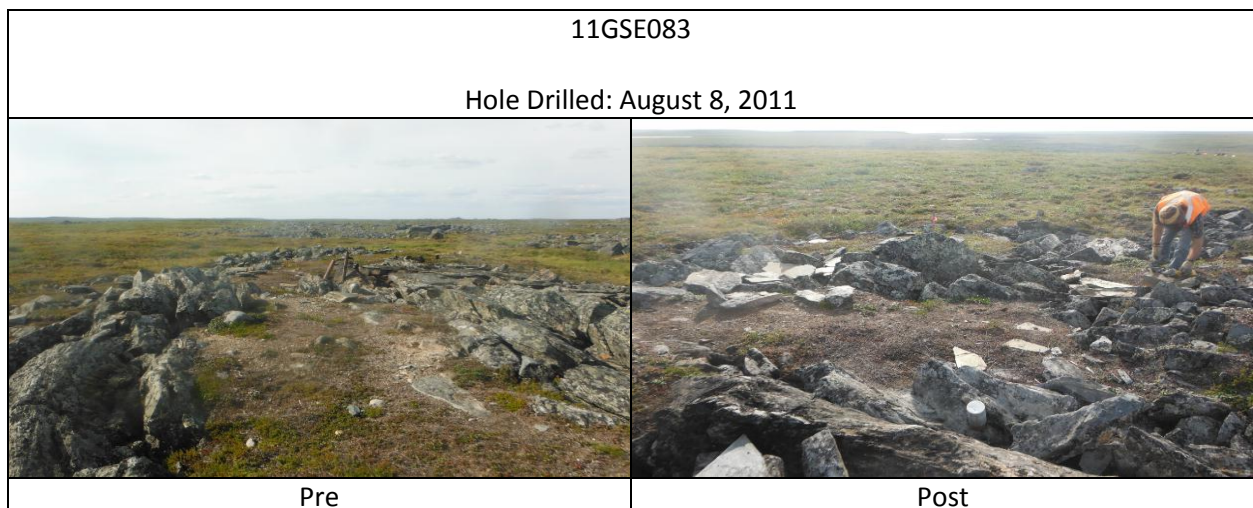
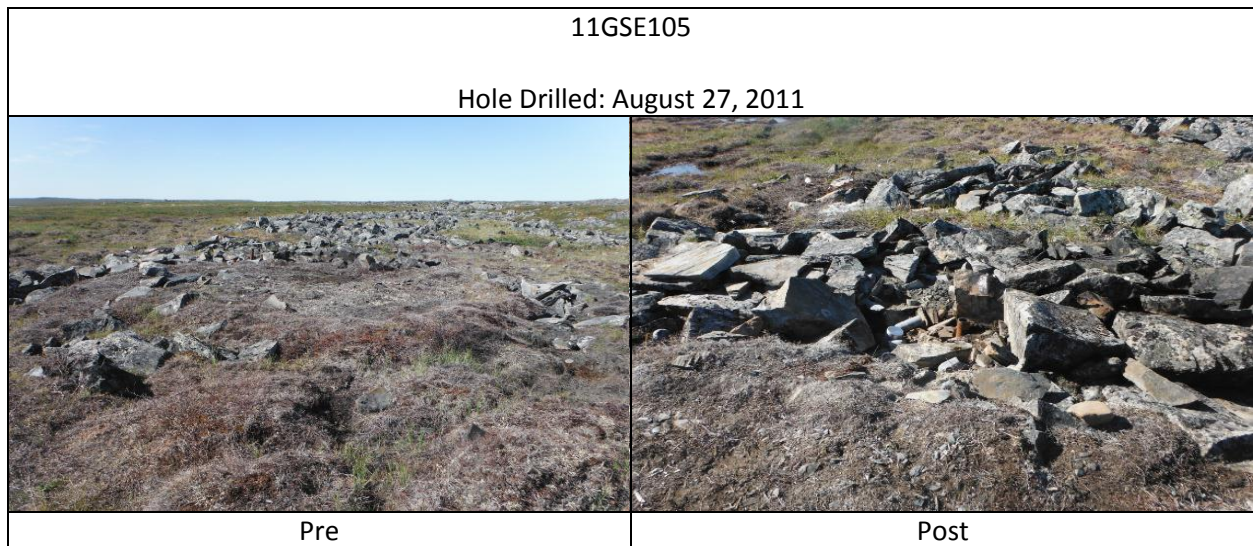
2013 Historical Drill Site Reclamation



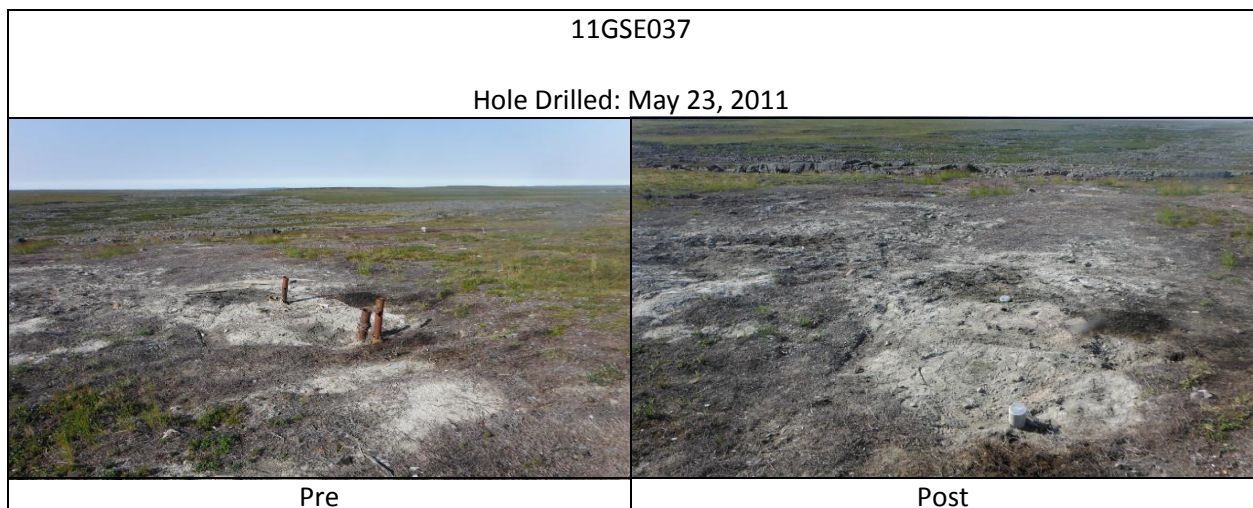
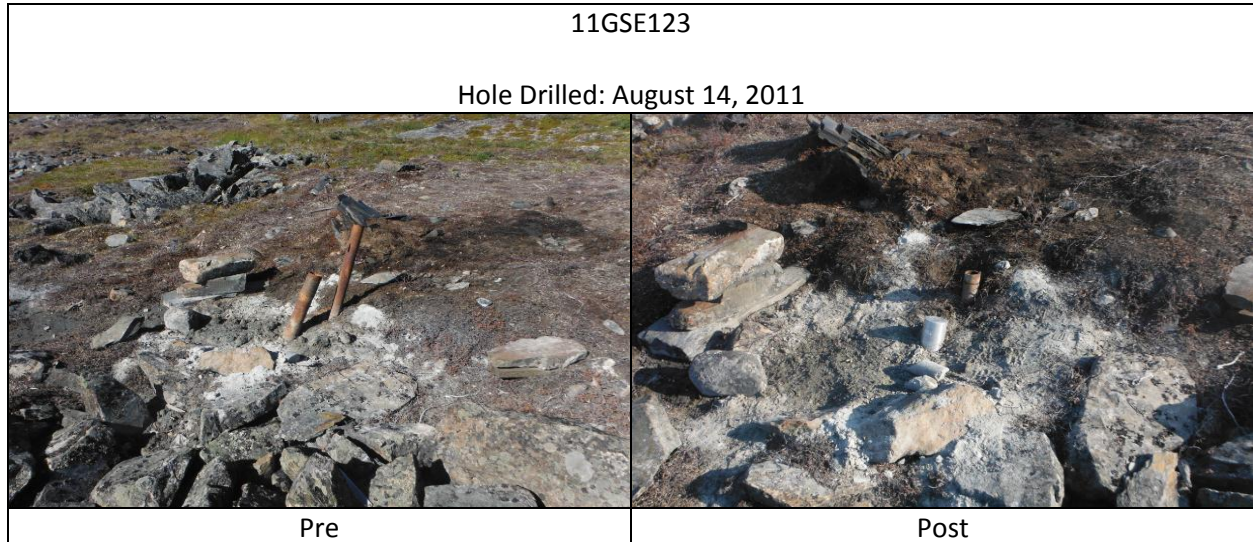
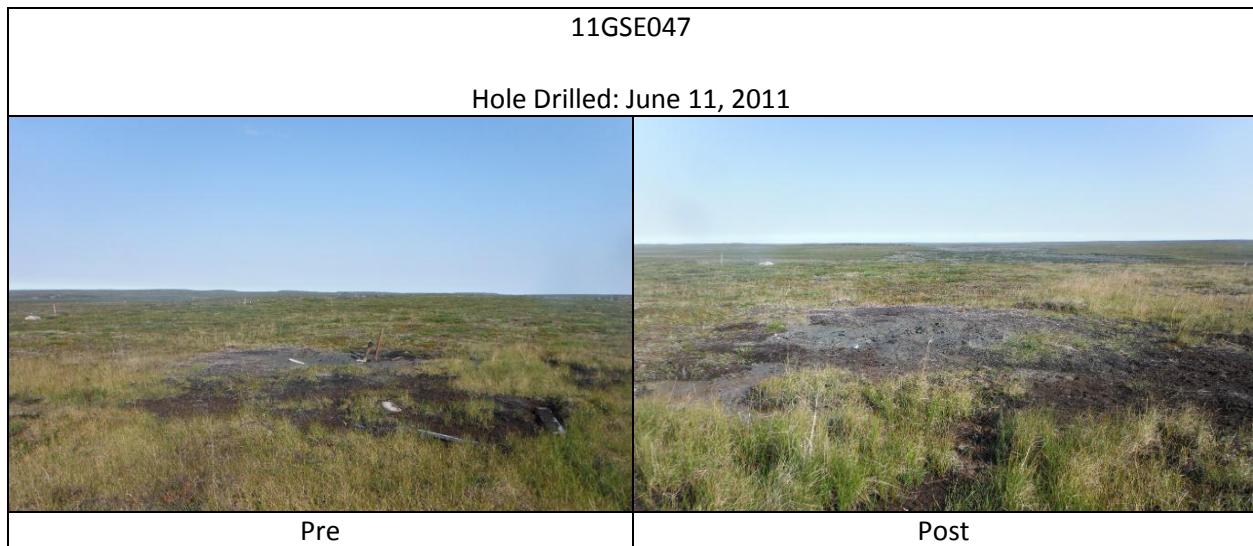
2013 Historical Drill Site Reclamation



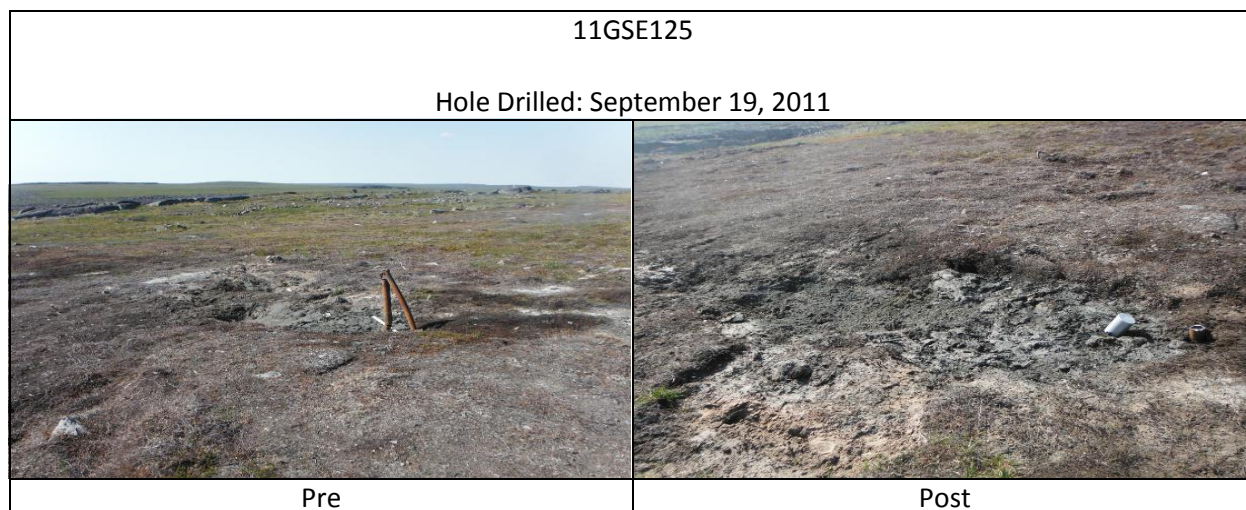
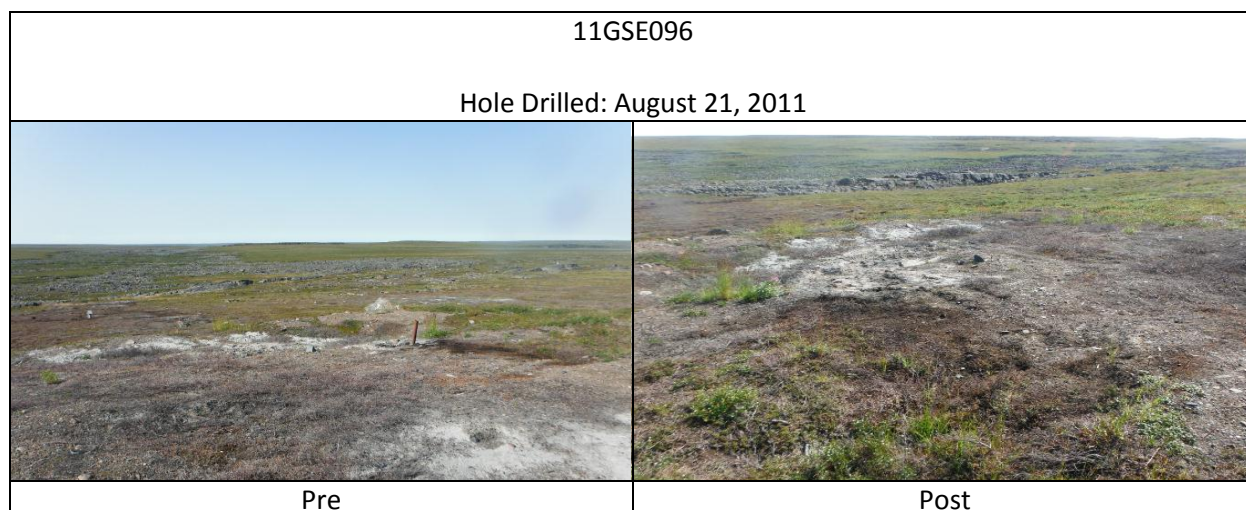
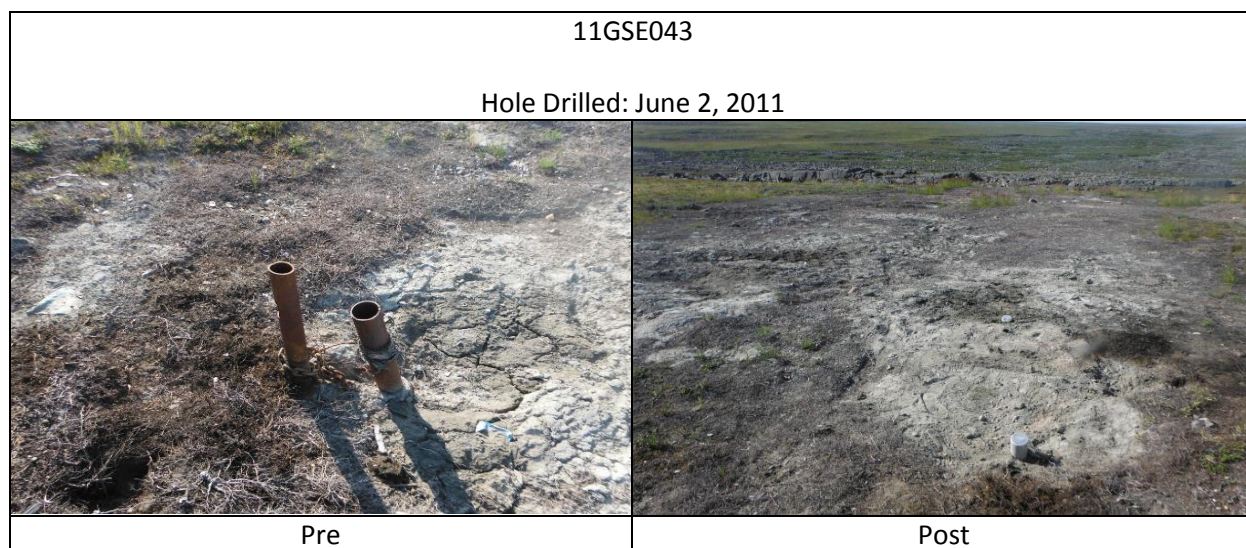
2013 Historical Drill Site Reclamation



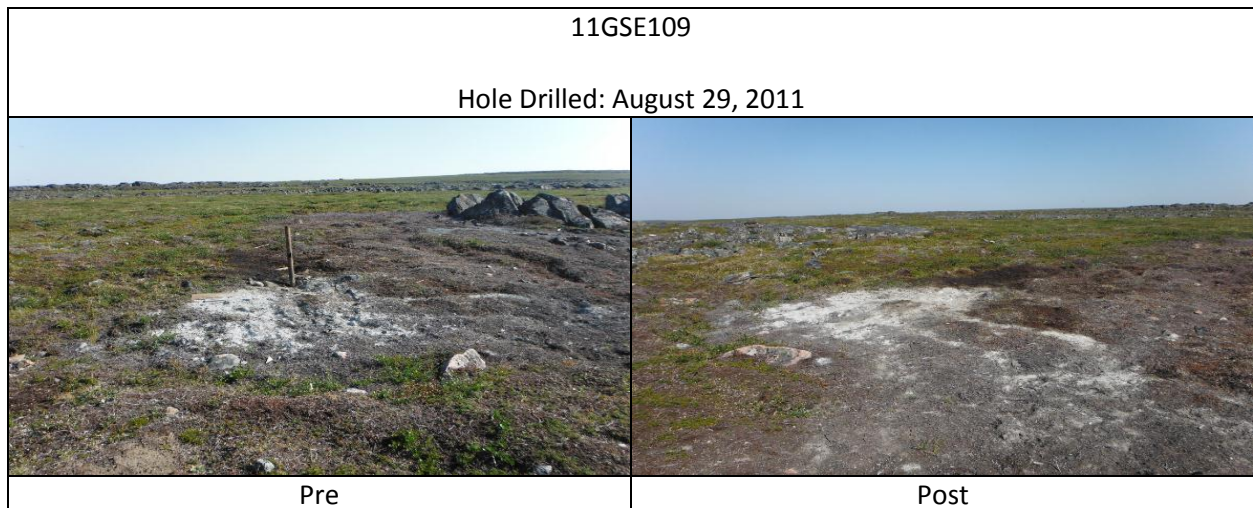
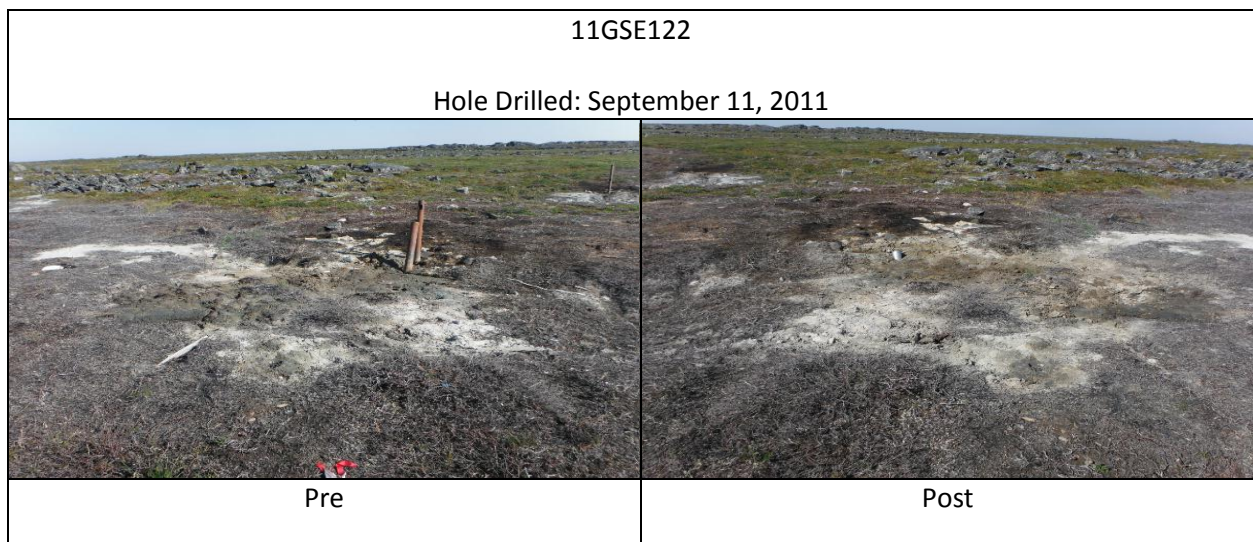
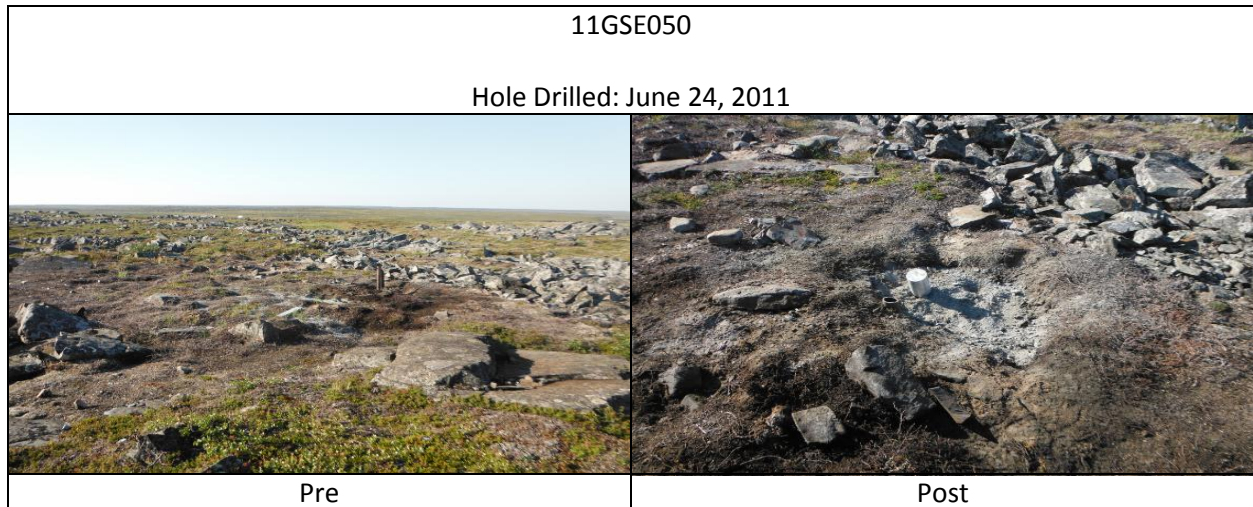
2013 Historical Drill Site Reclamation



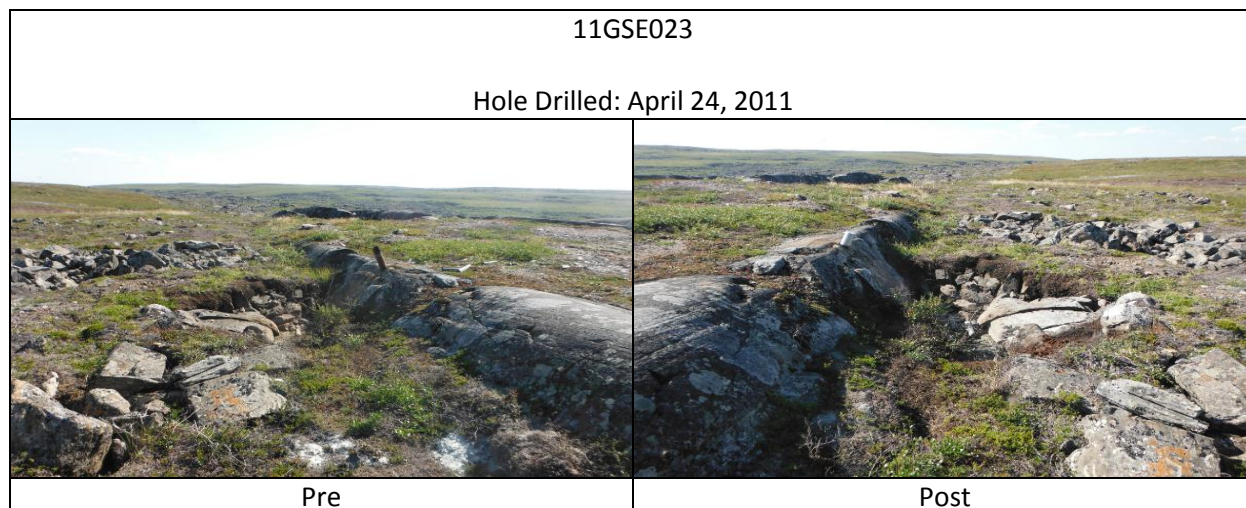
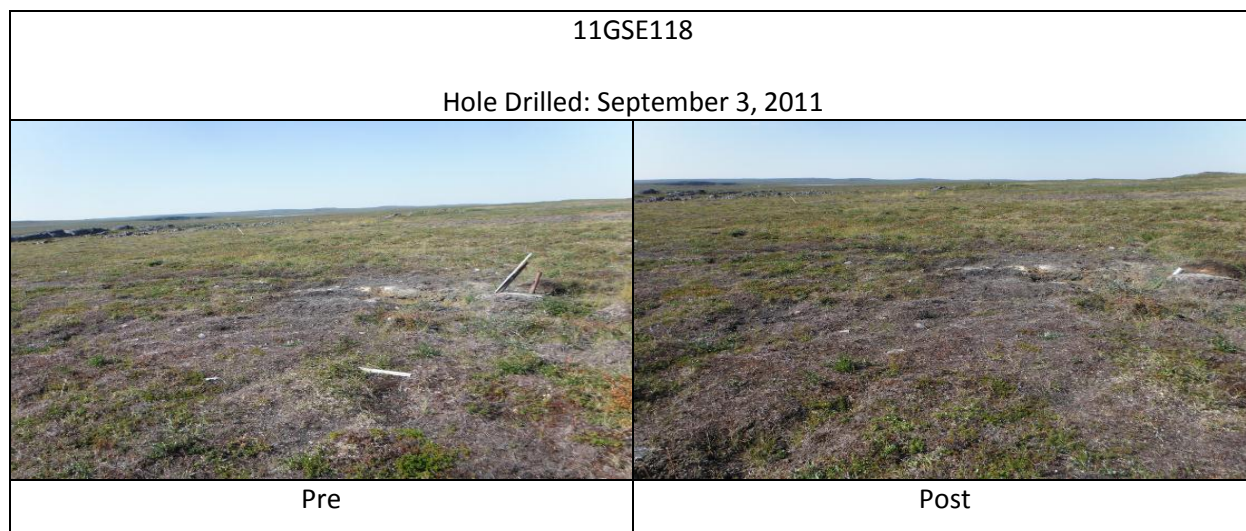
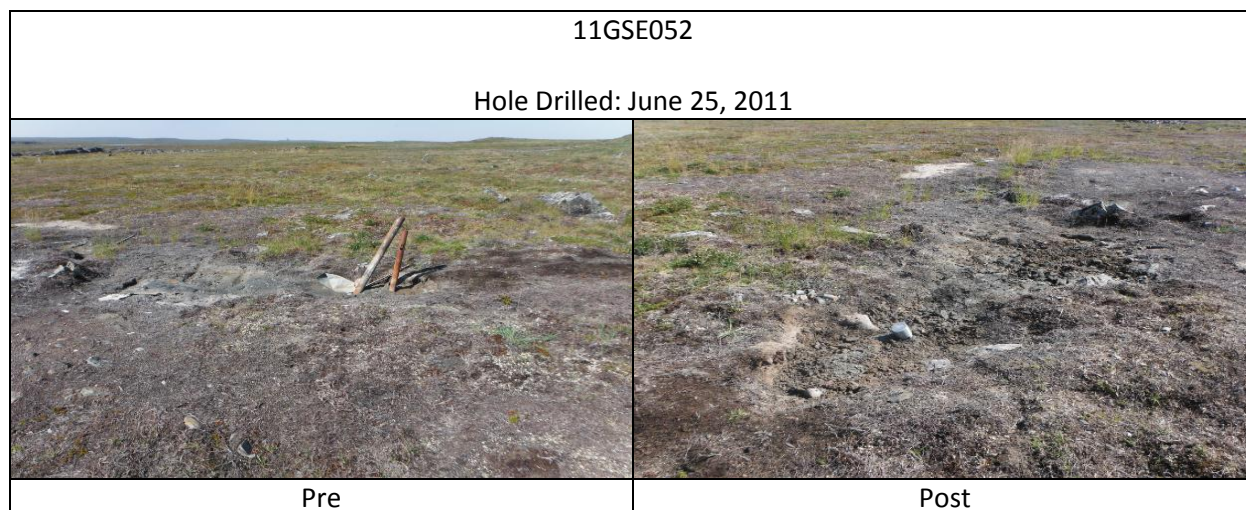
2013 Historical Drill Site Reclamation



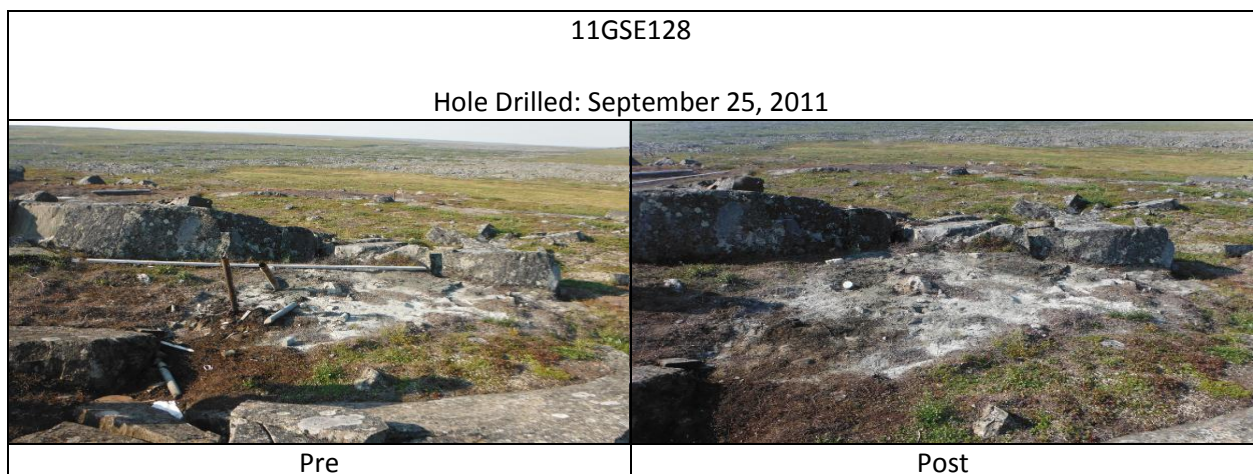
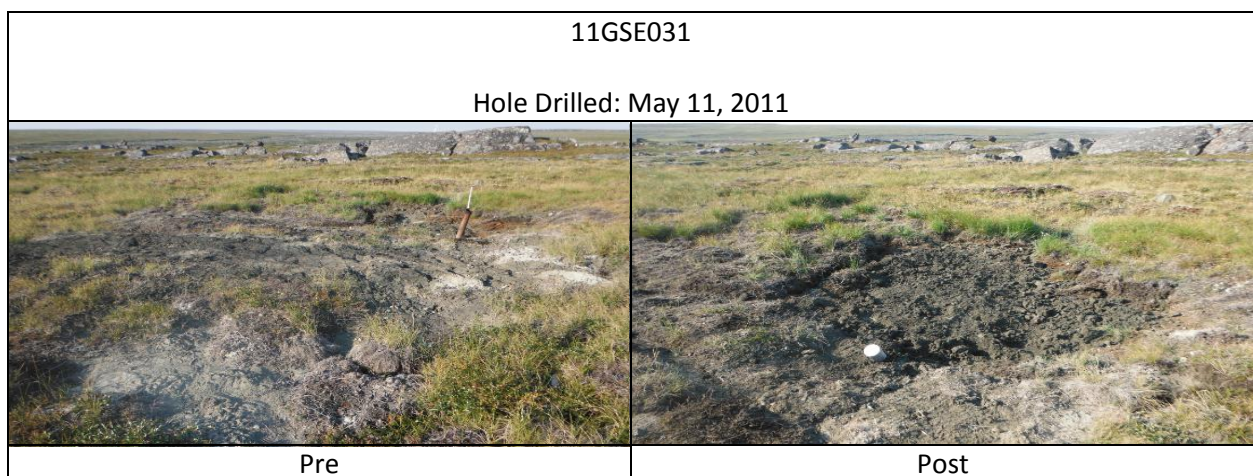
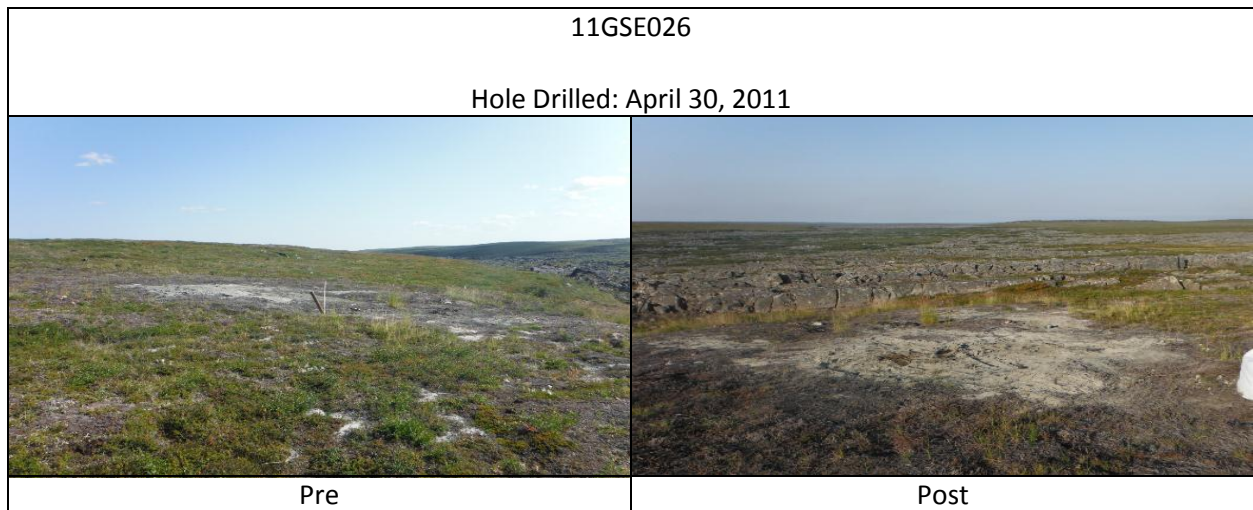
2013 Historical Drill Site Reclamation



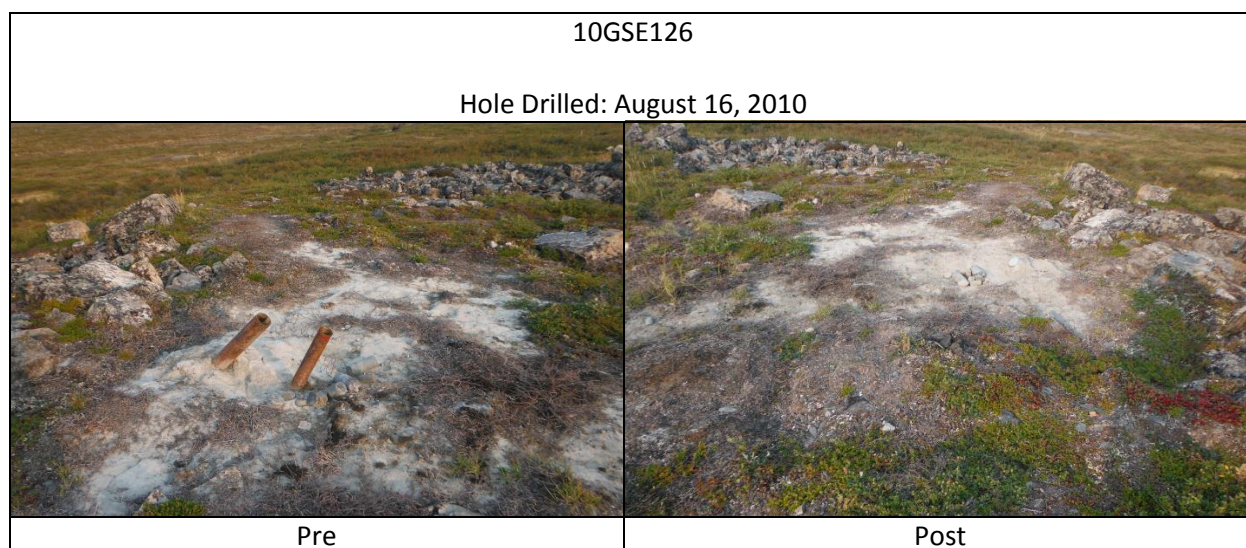
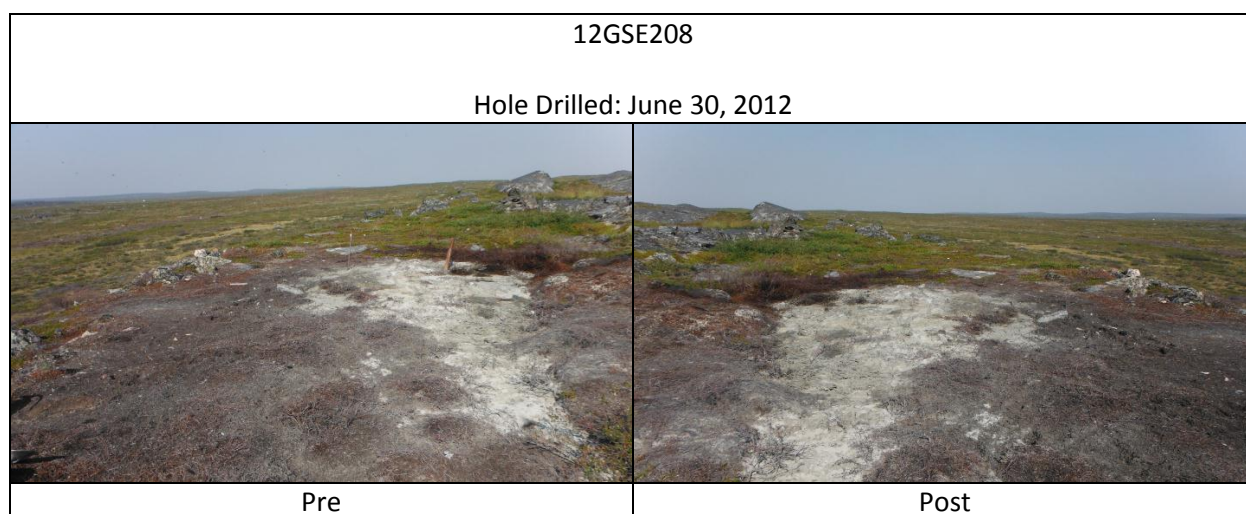
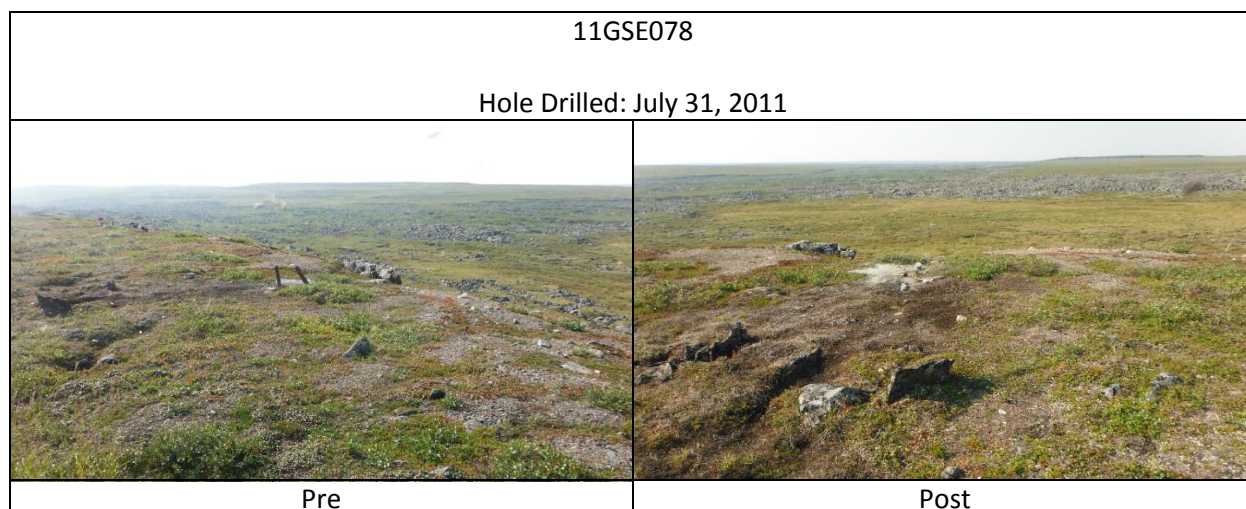
2013 Historical Drill Site Reclamation



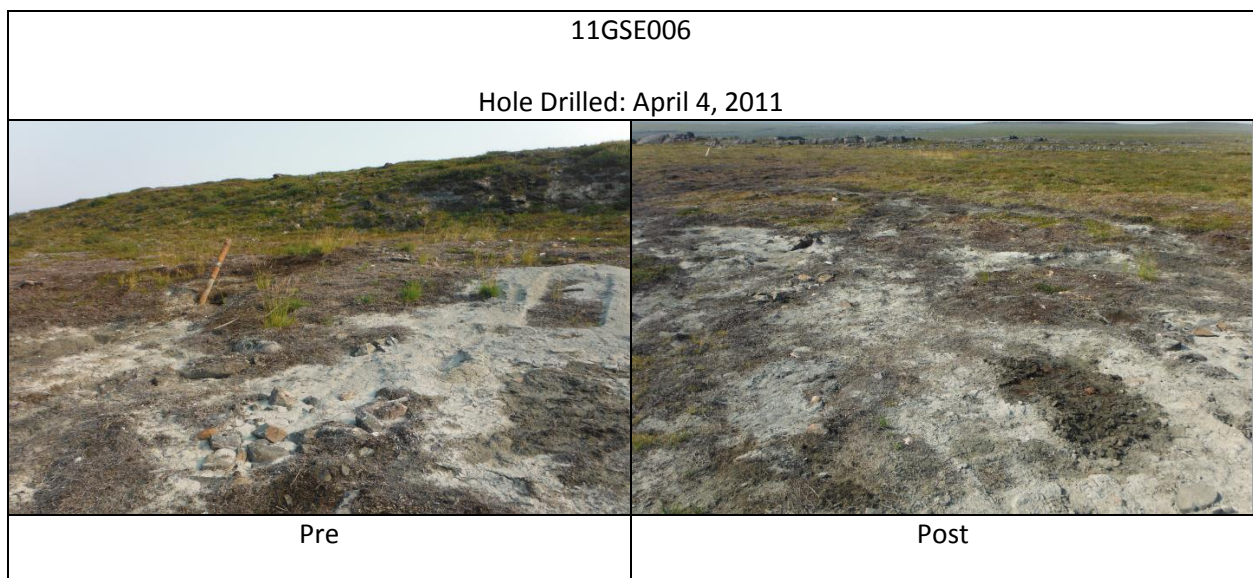
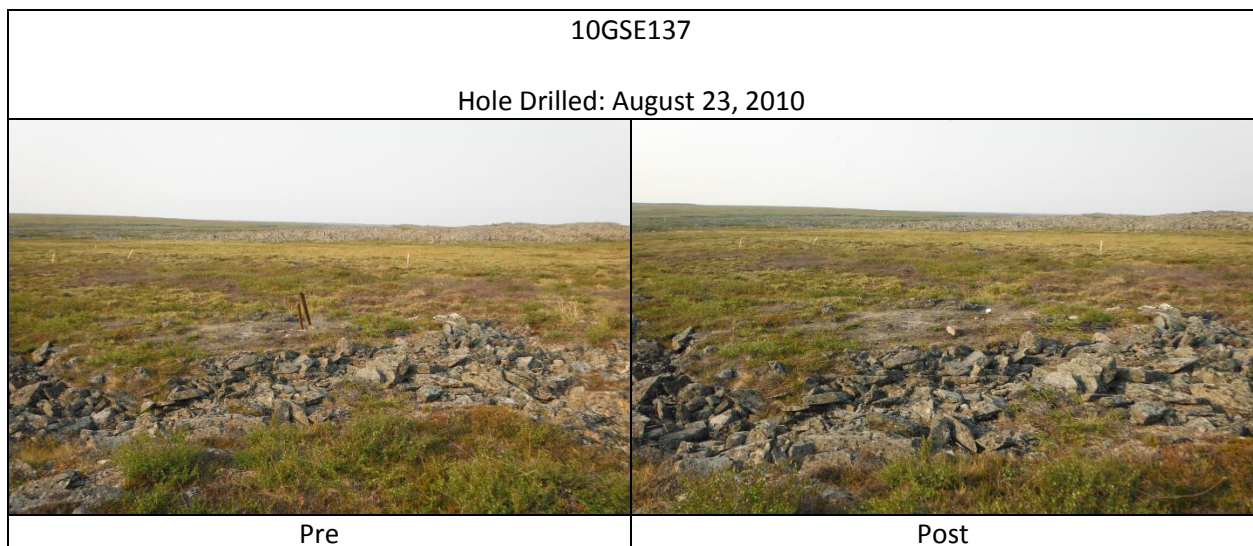
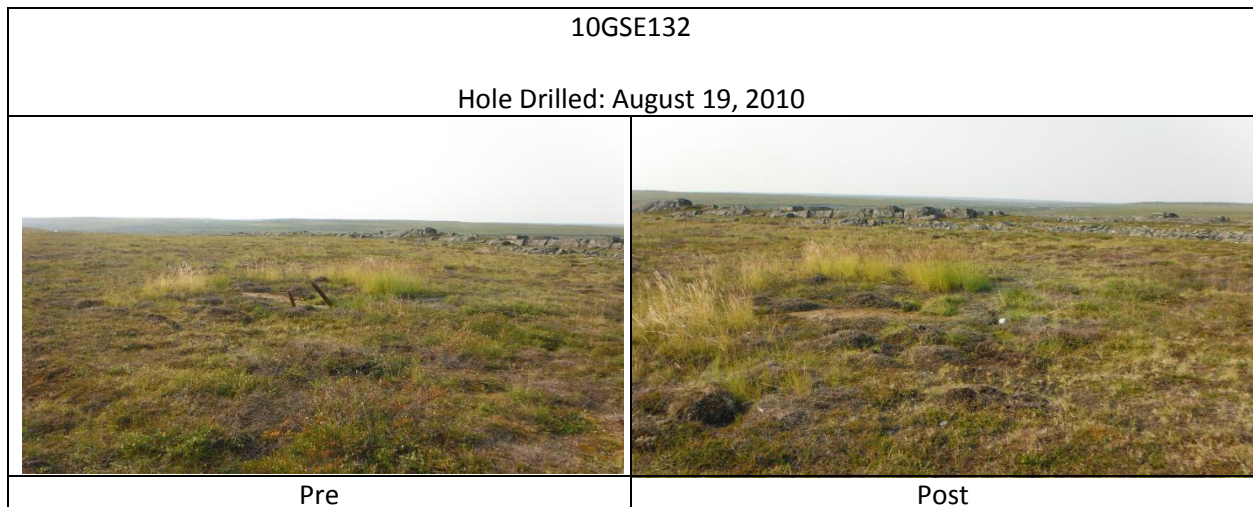
2013 Historical Drill Site Reclamation



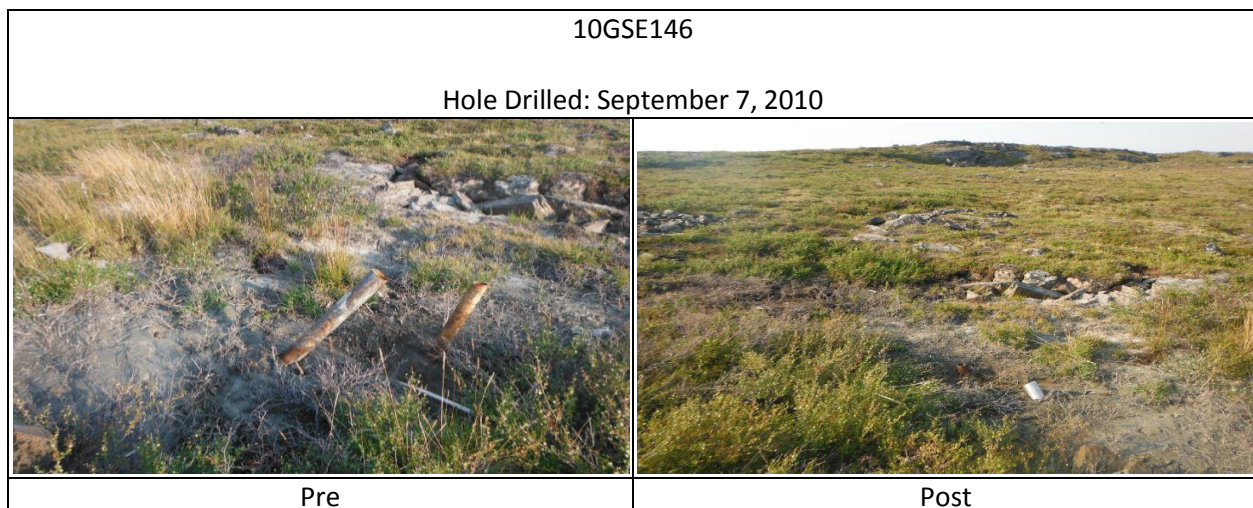
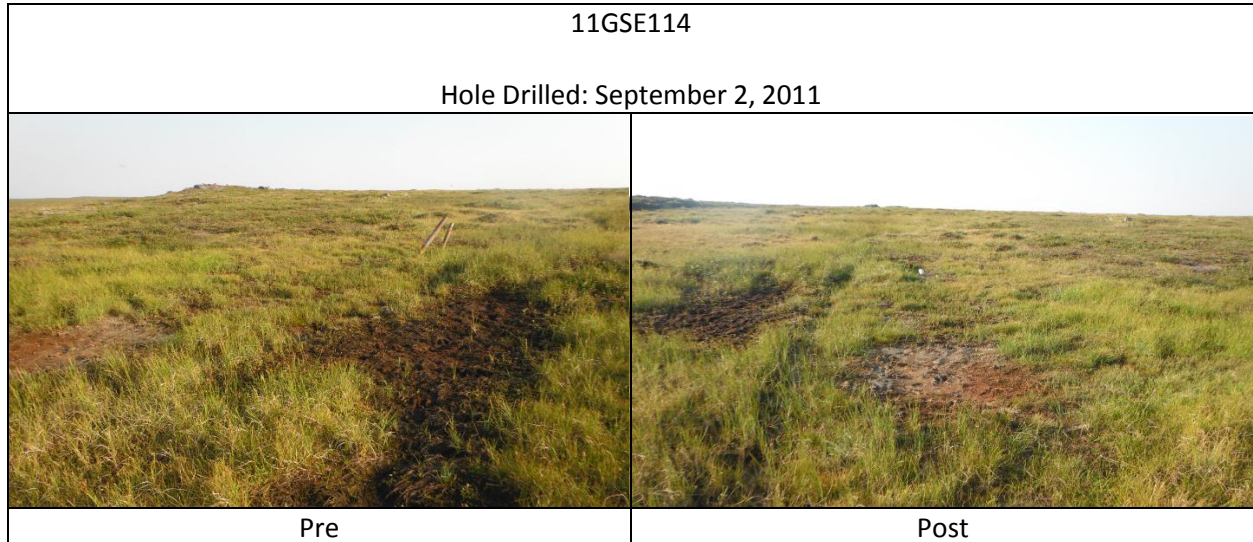
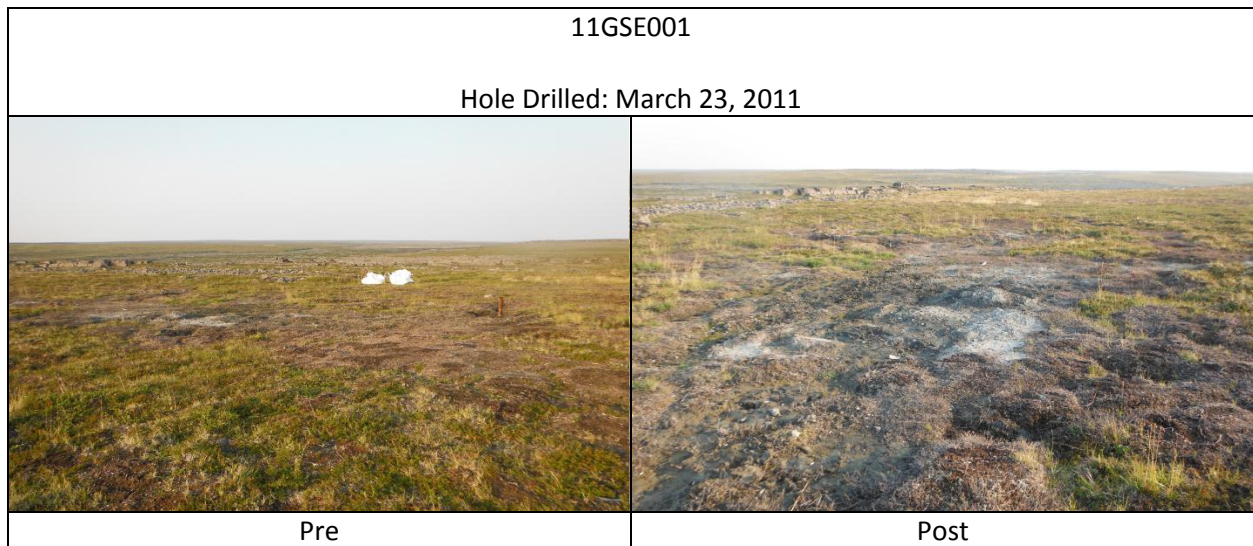
2013 Historical Drill Site Reclamation



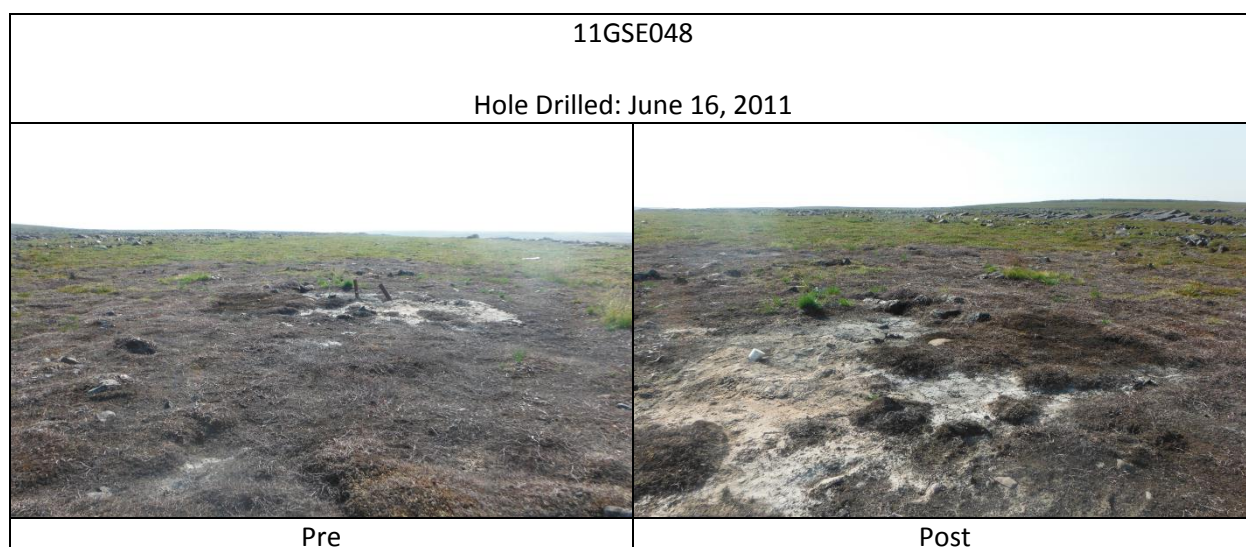
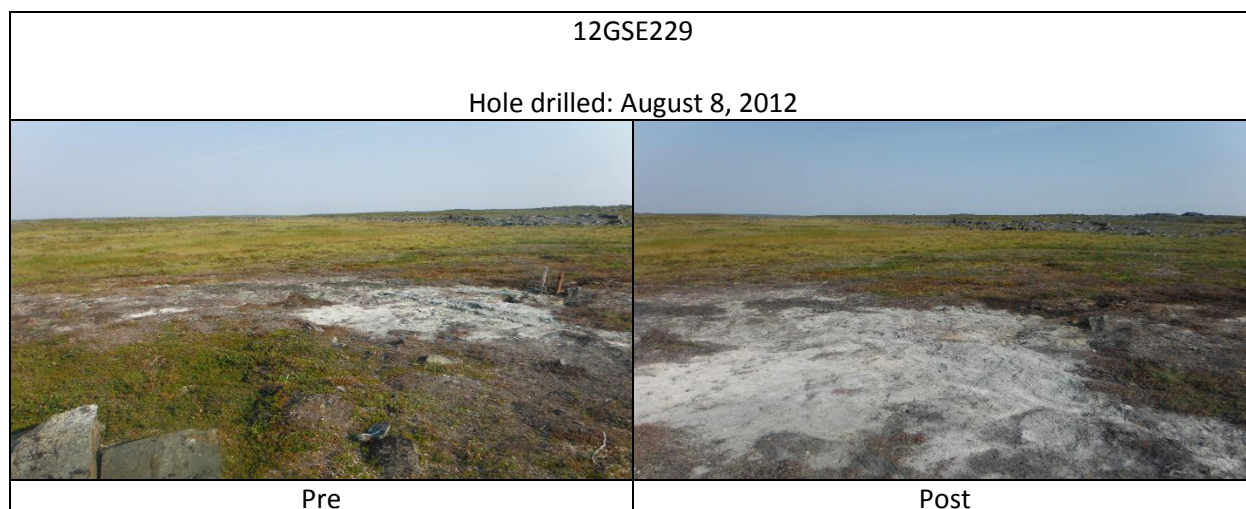
2013 Historical Drill Site Reclamation



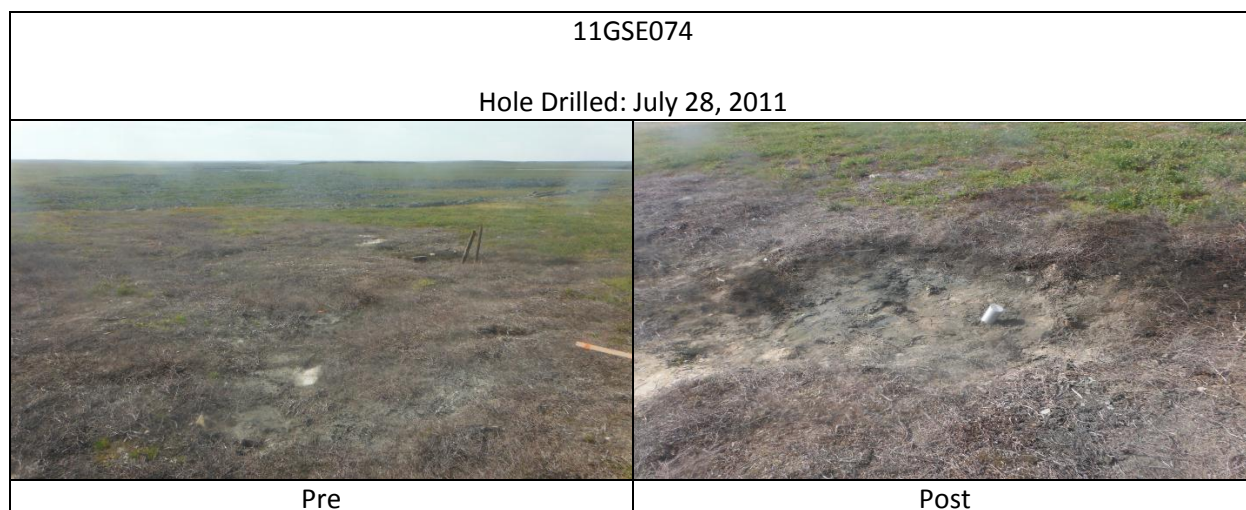
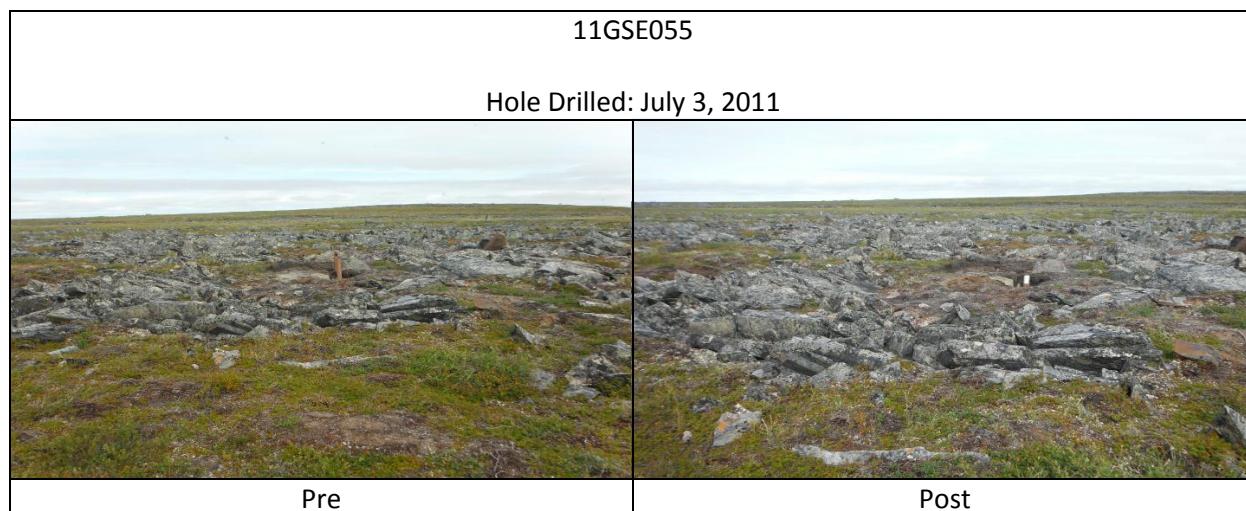
2013 Historical Drill Site Reclamation



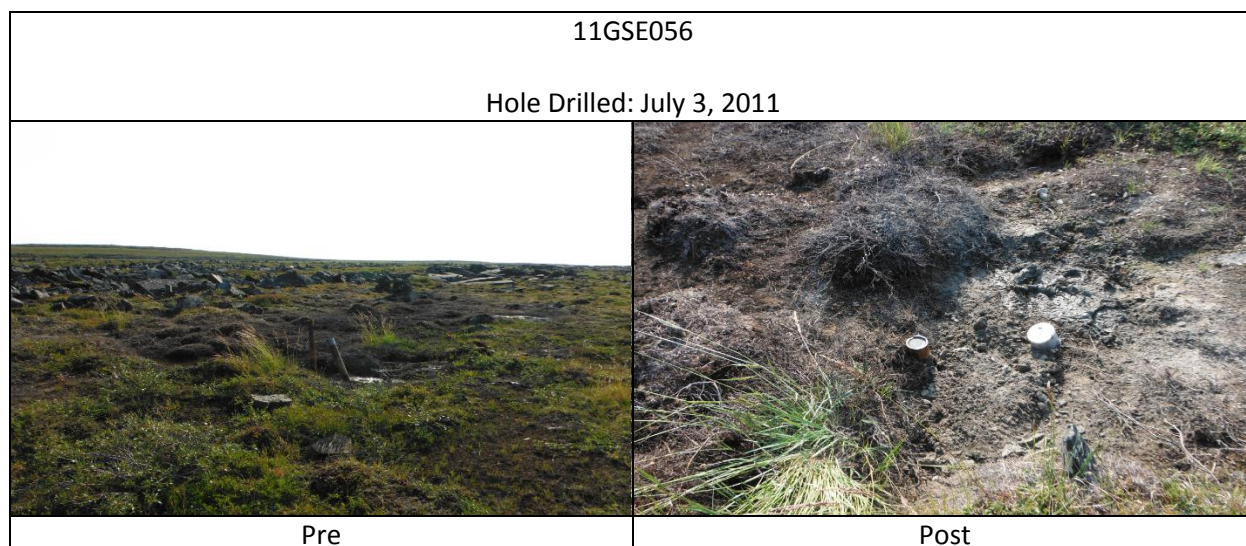
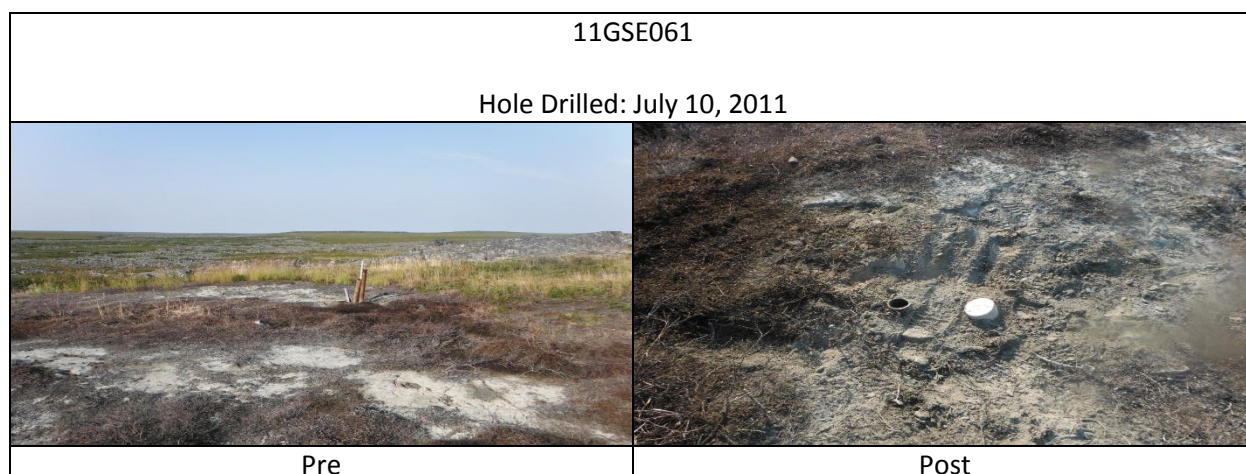
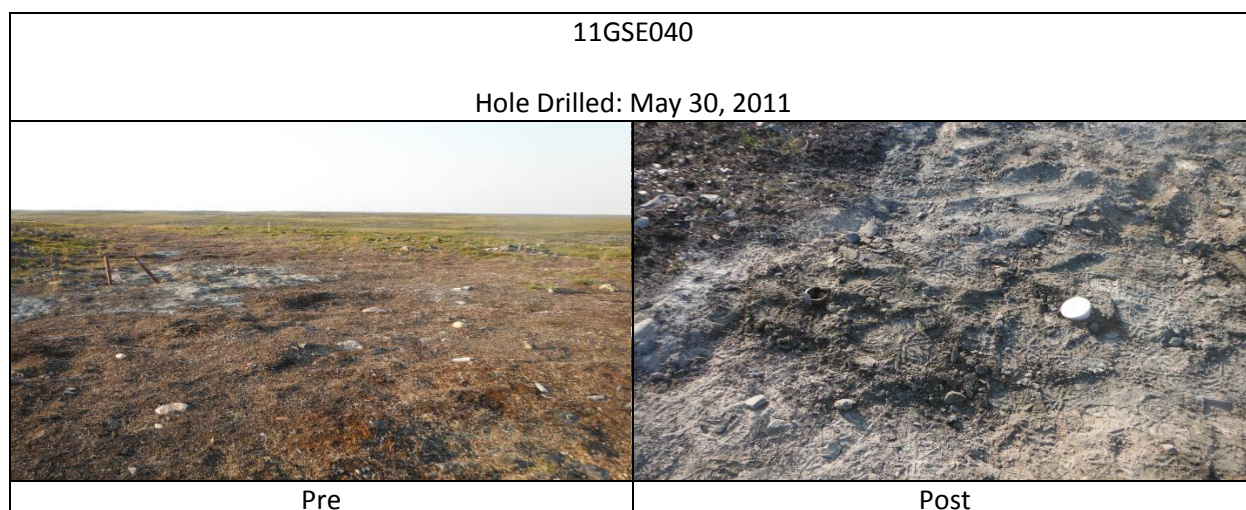
2013 Historical Drill Site Reclamation



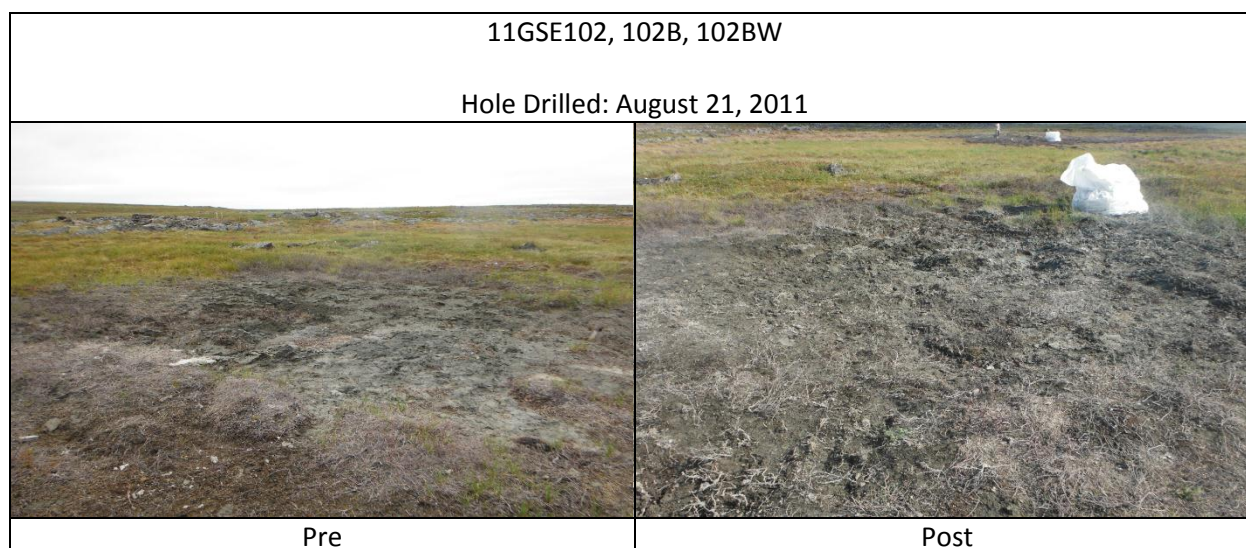
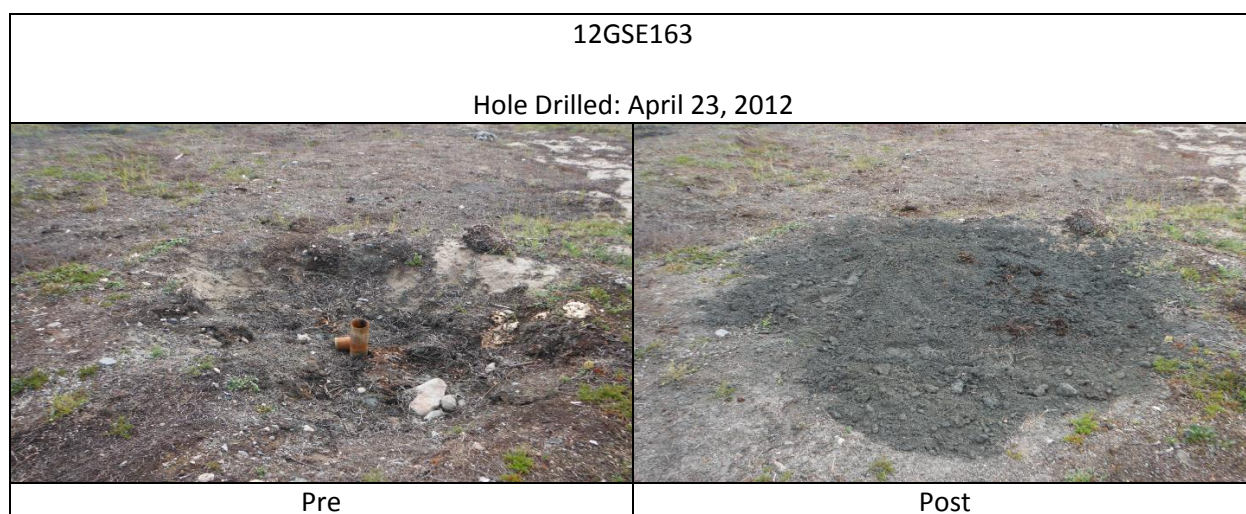
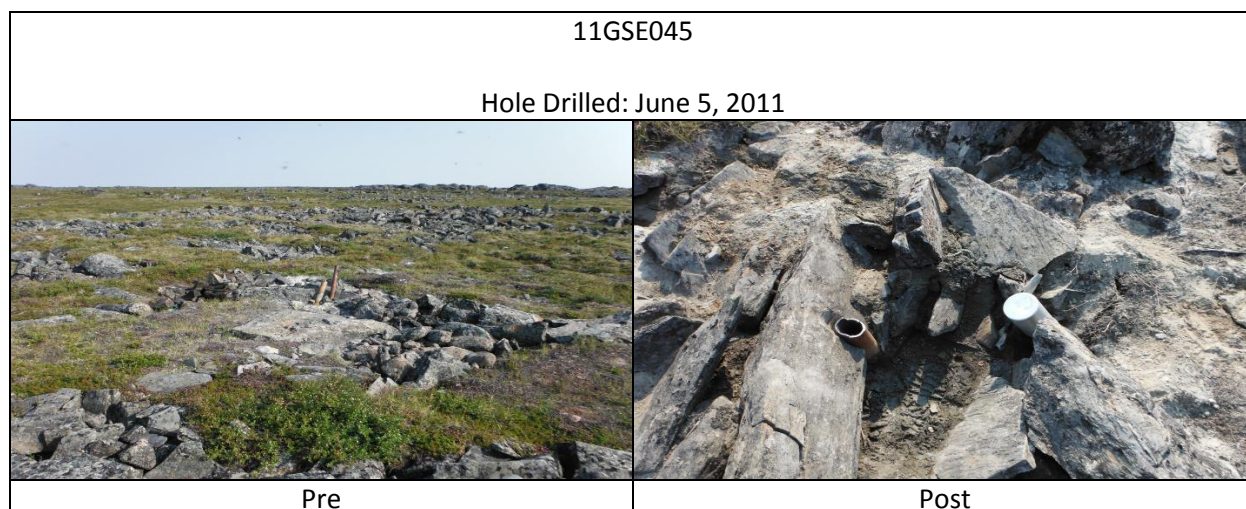
2013 Historical Drill Site Reclamation



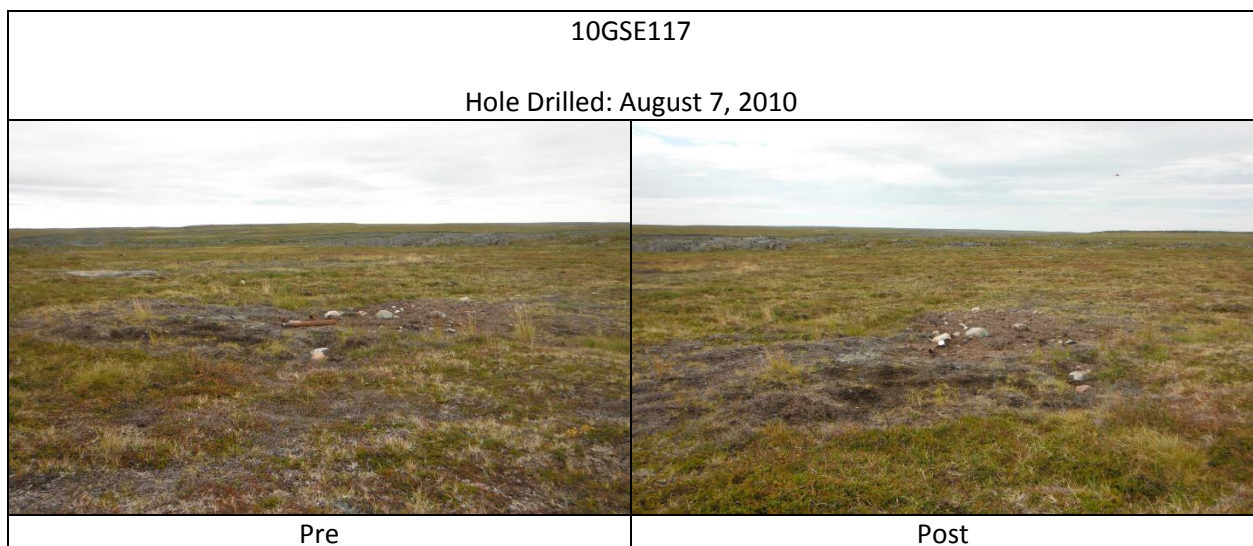
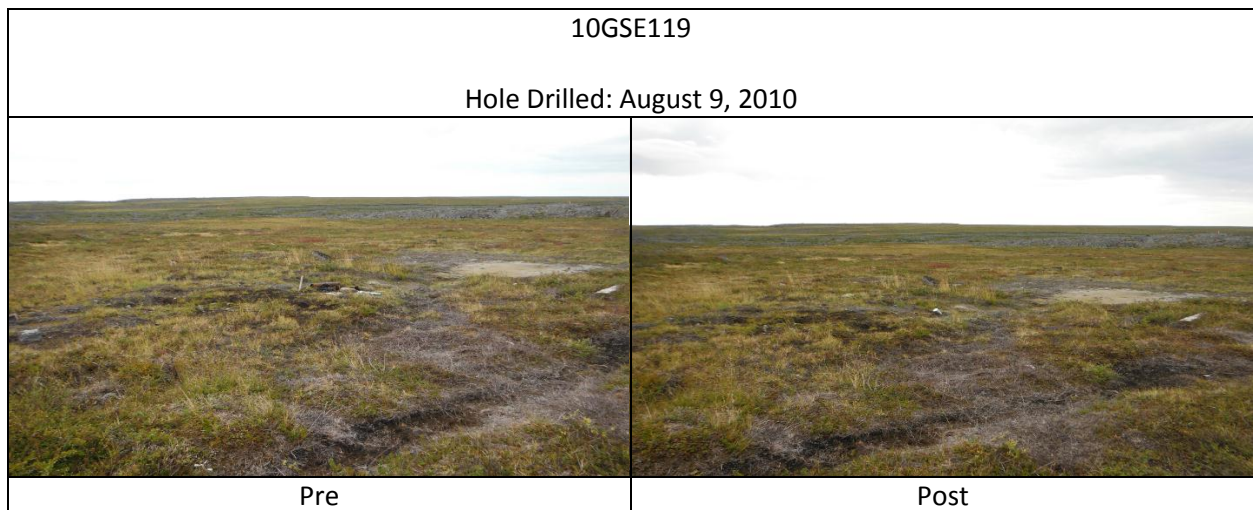
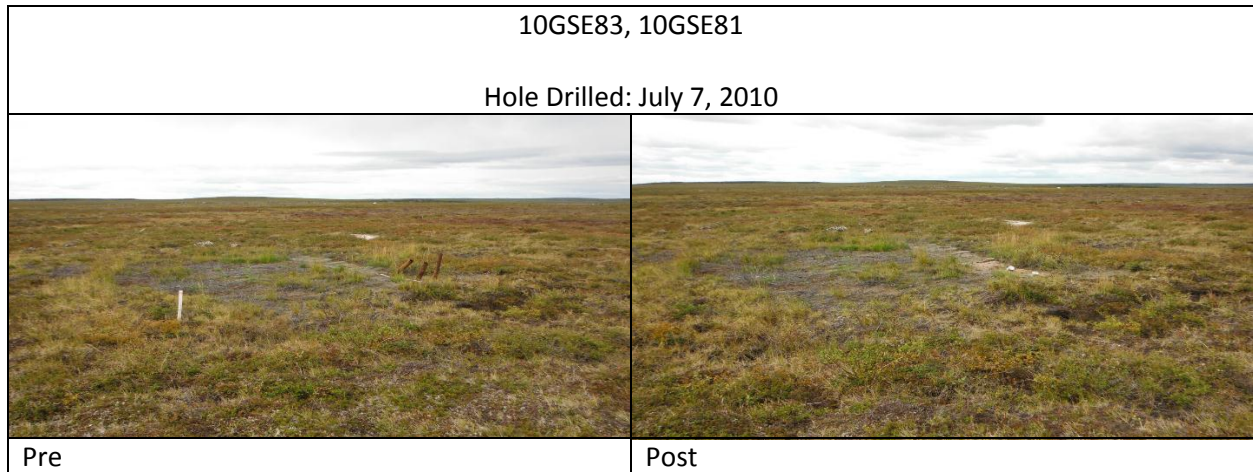
2013 Historical Drill Site Reclamation



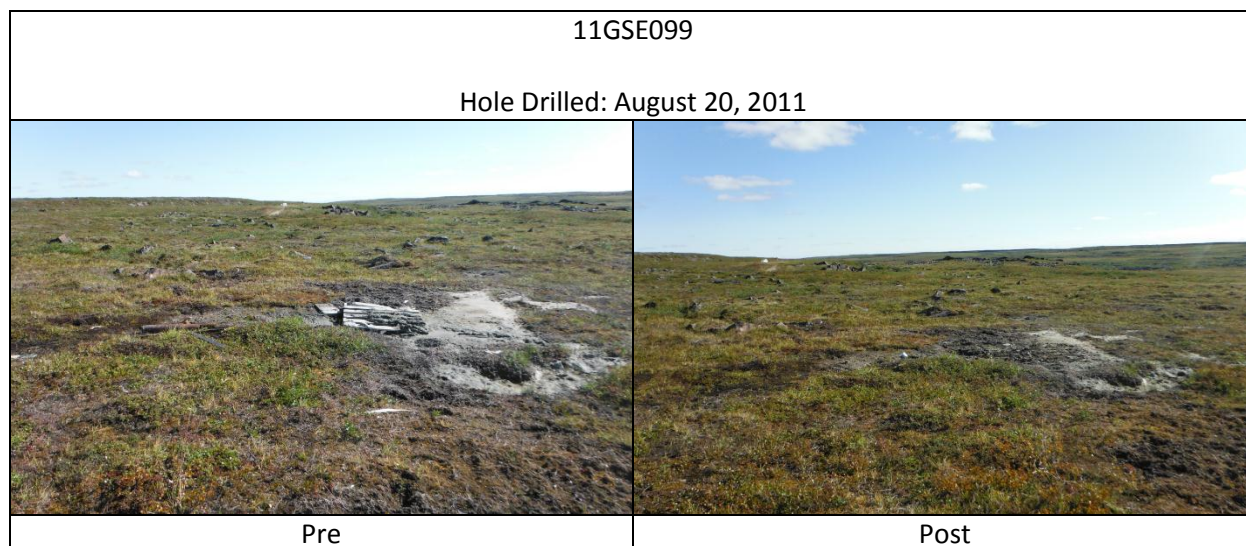
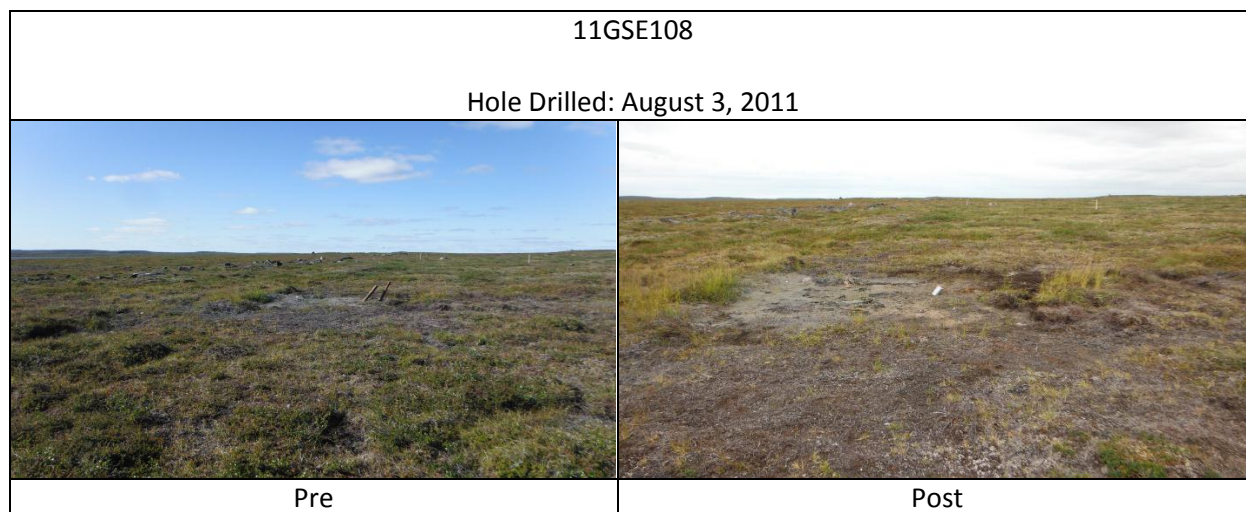
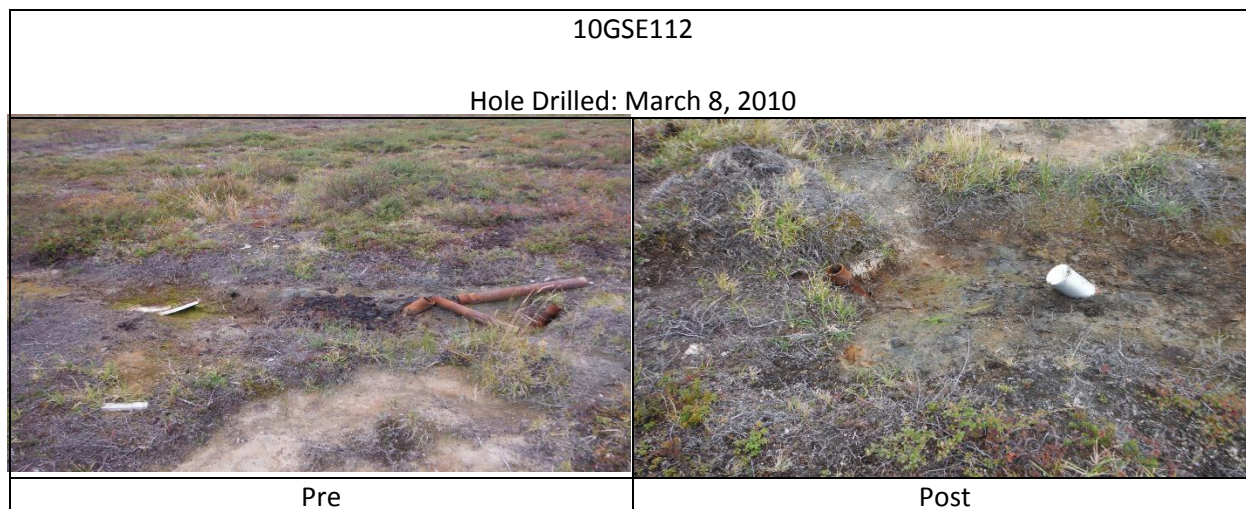
2013 Historical Drill Site Reclamation



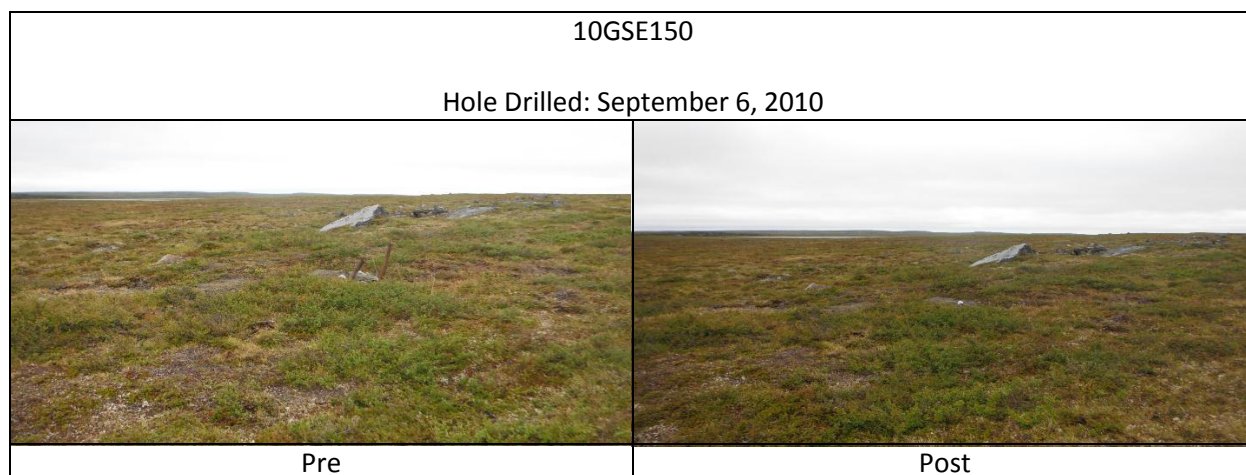
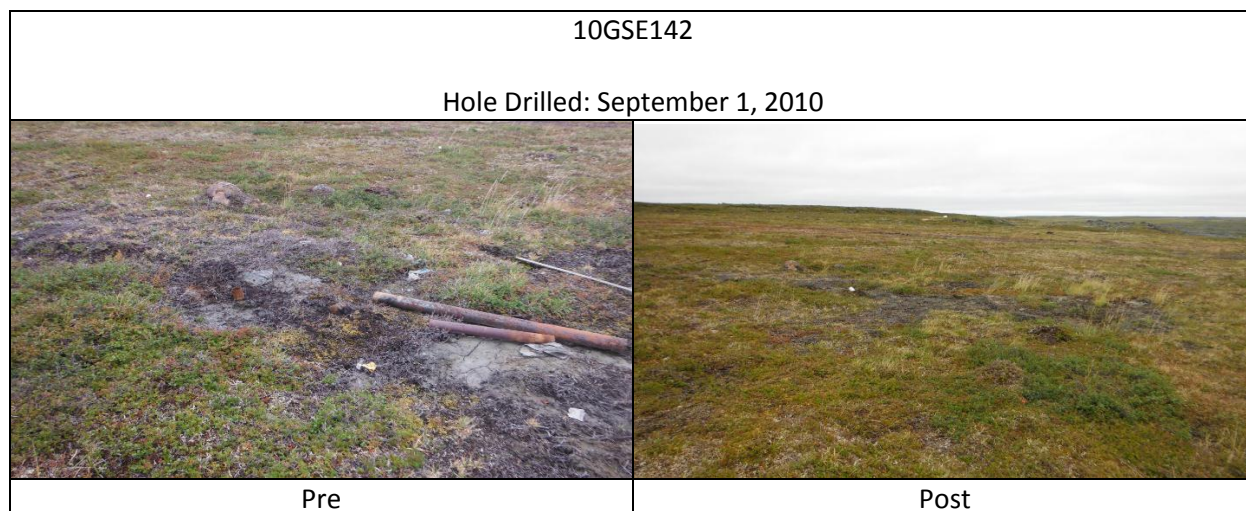
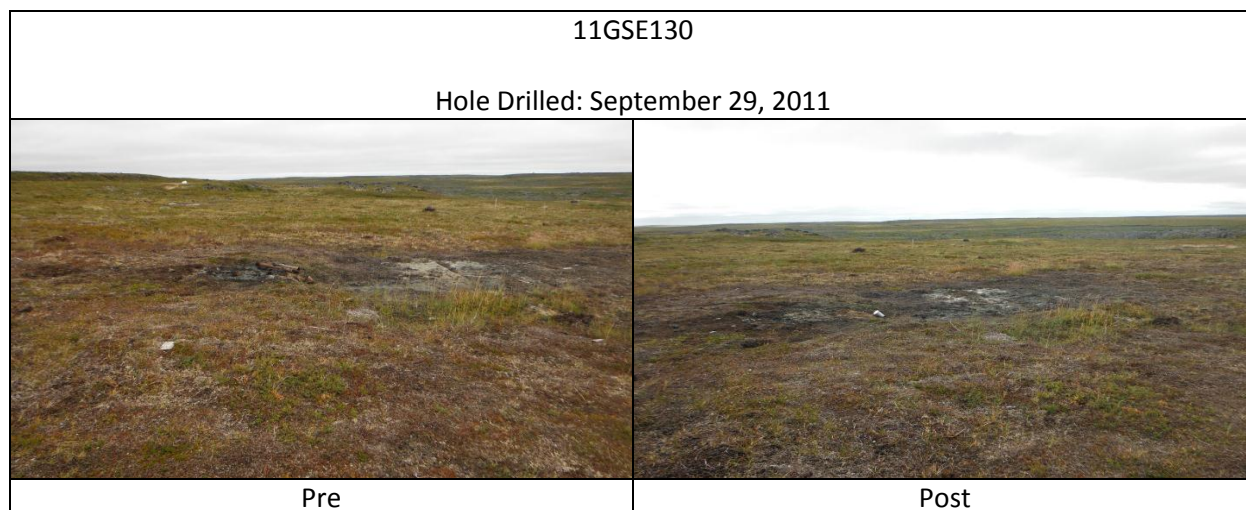
2013 Historical Drill Site Reclamation



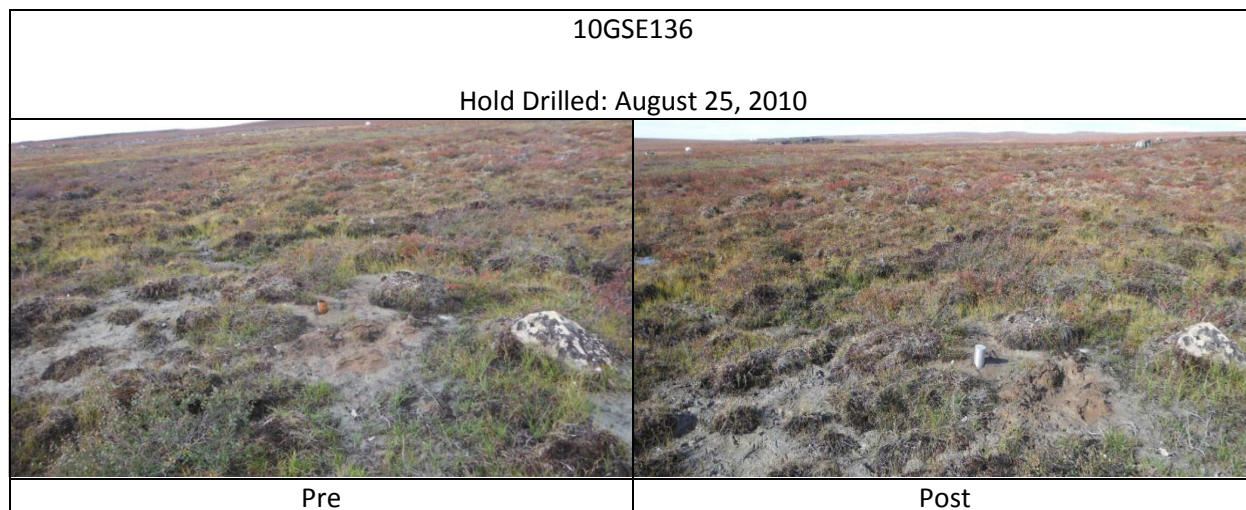
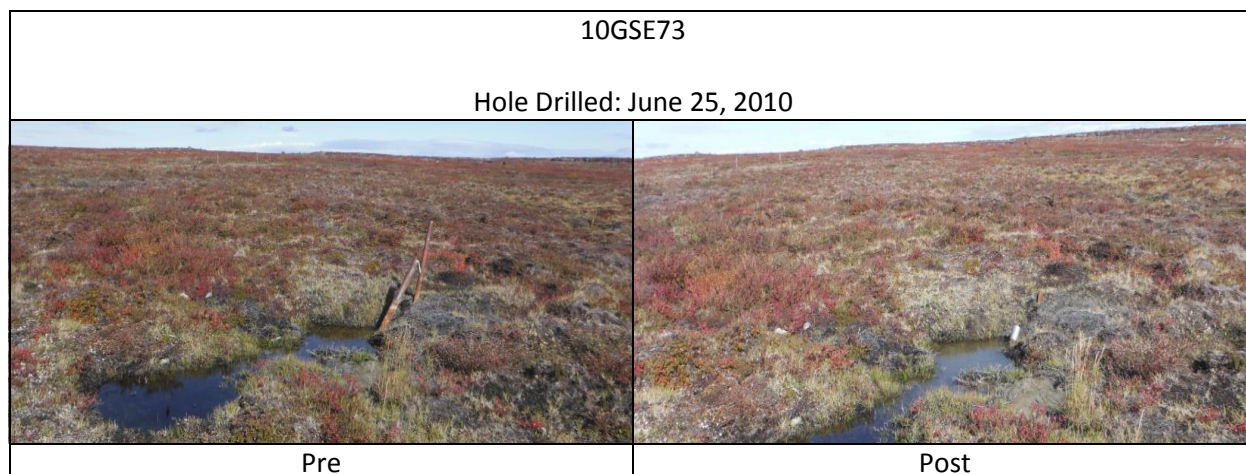
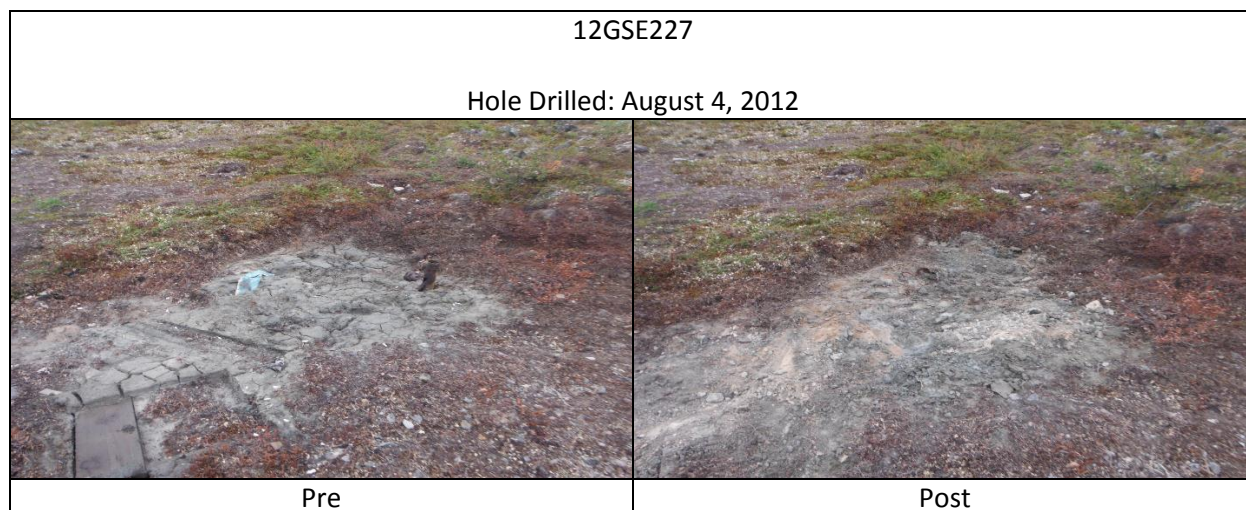
2013 Historical Drill Site Reclamation



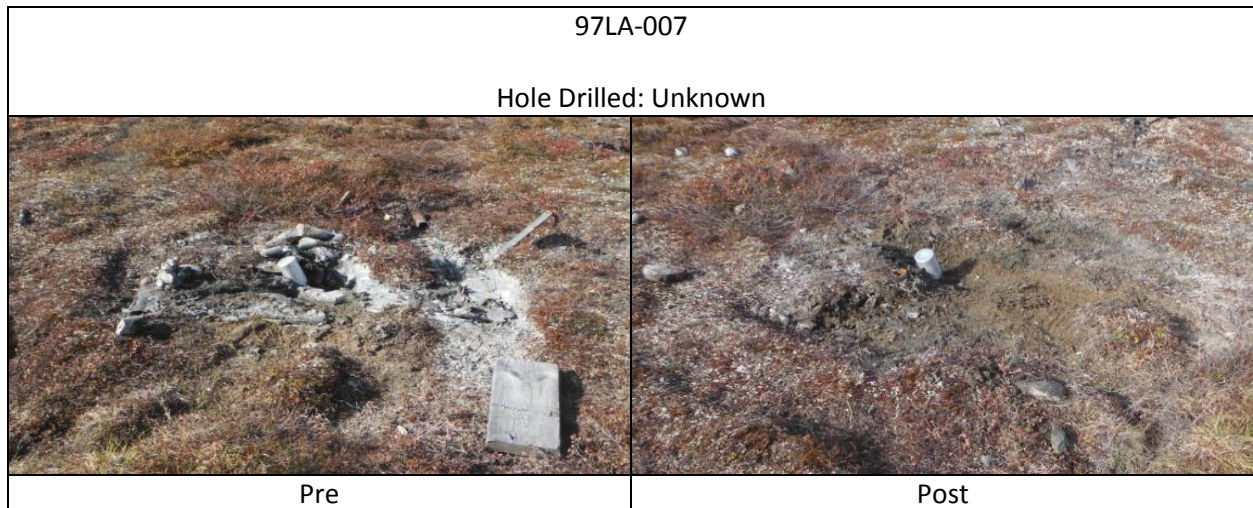
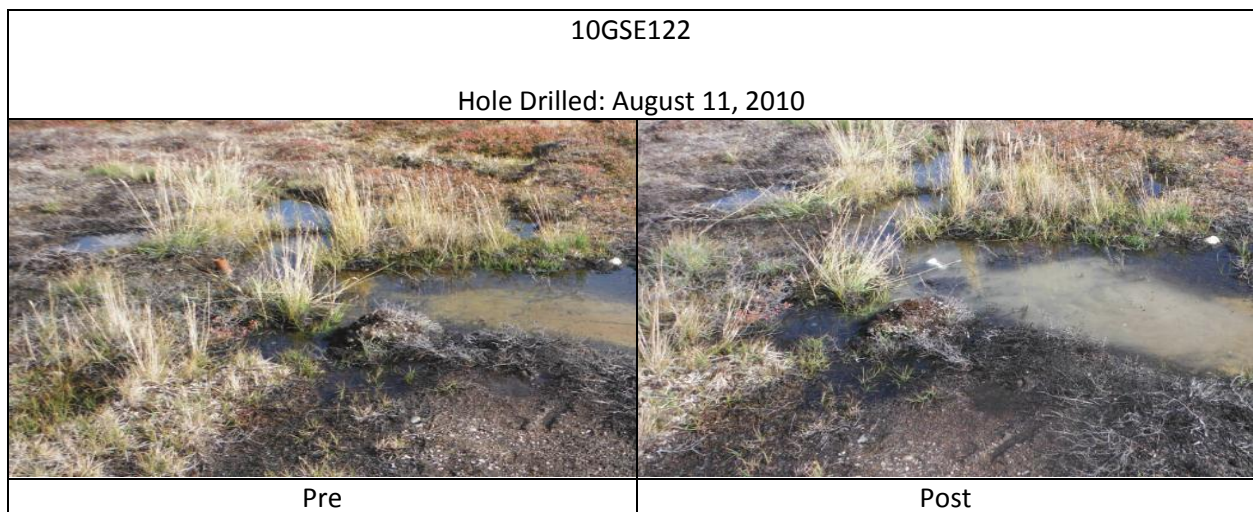
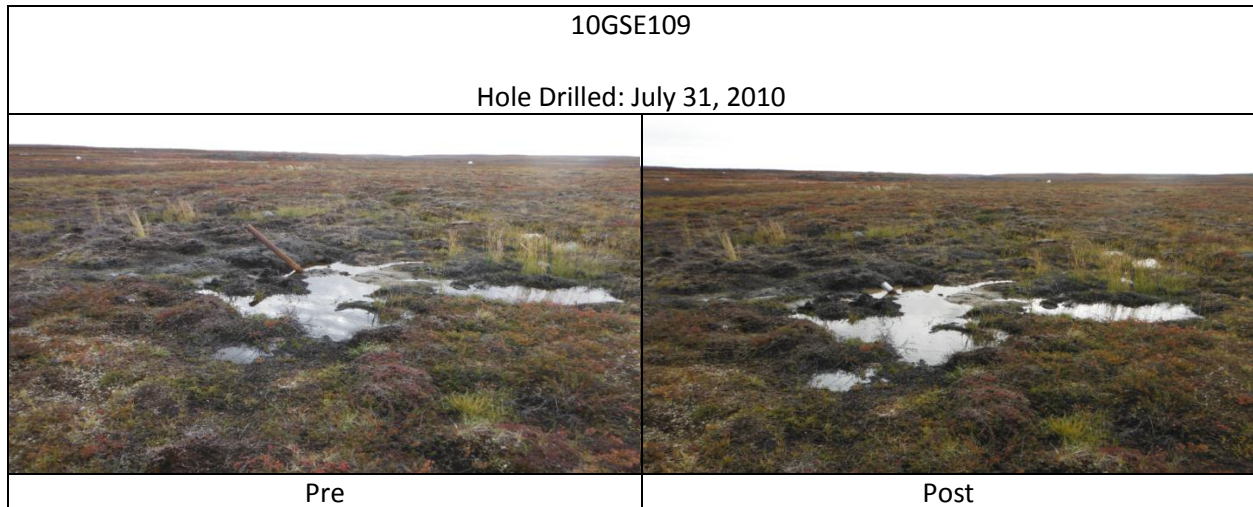
2013 Historical Drill Site Reclamation



2013 Historical Drill Site Reclamation



2013 Historical Drill Site Reclamation



APPENDIX C

2013 RECLAMATION ACTIVITIES – GEORGE LAKE



Pre-reclamation Cuttings Sump



Post-reclamation Cuttings Sump



Pre-reclamation Thermokarst TK-01.



Post-reclamation Thermokarst TK-01.



Pre-reclamation Thermokarst TK-02.



Post-reclamation Thermokarst TK-02.



Pre-reclamation Thermokarst TK-03.



Post-reclamation Thermokarst TK-03.