

Indicator Minerals Inc.
2010 INAC Land Use Annual Report
Nanuq North Project, Wager Bay Area, Kivalliq, NU

Land Use Permit #N2009C0005
NIRB File #09EN011

Work Completed:	On-Ice & Land-based Diamond Drilling; Heavy Mineral Sampling
Dates Work Completed:	May 20, 2010 – June 26, 2010; August 19 to 29, 2010
Location of Claims:	NTS 56G/10, 56G/11 & 56G/07, Wager Bay Area, Kivalliq, NU

May 15, 2011

Andrea Maynes
Dennis Doulos

Table of Contents

Introduction	3
Description and Location of Land Use Area	3
Summary of 2010 Field Program	3
Land Use Considerations	4
Wildlife and Environmental Studies	4
Community Consultation	5
Site Visits	5
Reclamation Work	5
2011 Work Plan	6
Appendices	
I: Nanuq North Property Location & Land Tenure	7
II: Helicopter Landing Sites	9
III: Figures	12
1 Property Location	13
2 2010 Exploration Activity	14
IV: List of Personnel and Contractors	15
V: Community Consultation Log	17
VI: Drill Site Photos	TBA

Introduction

During the 2010 field season, Indicator Minerals Inc. conducted diamond drilling and heavy mineral exploration programs on the Nanuq North Project. The Nanuq North property is a joint venture property between Indicator Minerals and Peregrine Diamonds Ltd. (PGD), and is located just south of Wager Bay on the southern border of Ukkusiksalik National Park in the Kivalliq Region of Nunavut. Diamond drilling was conducted from May 20th, 2010, to June 26th, 2010 and tested one kimberlite target. Heavy mineral sampling was carried out by a small 3-person crew from August 19th to 29th. The Nanuq North Property is located 275 km northeast of the community of Baker Lake and 310 km north of Rankin Inlet. No camp was established. The program was conducted under Indian and Northern Affairs Canada (INAC) Land Use Permit **N2009C0005**.

Description and Location of Land Use Area

The 2010 exploration drill program was conducted on the Nanuq North property, which exists in the Kivalliq Region of Nunavut. Exploration activities were conducted on mineral claims held by Indicator Minerals Inc. that are listed in Appendix I and are located on 1:50,000 scale NTS Map Sheets 56G 07, 10 and 11. All field work was helicopter-supported and based from Peregrine Diamonds Ltd.'s Nanuq Camp, located approximately 40 kilometres south-southwest of the Nanuq North property centre. Figure 1 is a property location map included in Appendix III.

Summary of 2010 Field Program

Exploration activities conducted on the Nanuq North property by Indicator Minerals Inc. during the 2010 exploration program included diamond drilling and heavy mineral sampling. A visual summary of the location of all field activities during 2010 can be seen in Figure 2, "2010 Exploration Activity", located in Appendix III. Personnel and contractors associated with each portion of the 2010 exploration program are listed in Appendix IV.

Diamond Drilling. Six holes totaling 1121 metres were diamond drilled by Boart Longyear during the spring 2010 exploration program. The drill crew mobilized into PGD's Nanuq Camp on May 11th, 2010, the drill was flown via fixed-wing aircraft from Rankin to site between May 16th and 18th (delayed due to weather), and drilling began on May 24th. The spring drilling program was completed on June 24th, 2010. Four of six drill holes were drilled from a single setup situated on the shore of the target lake while ice was thick, and the other two drill holes were situated a minimum 31 metres from shoreline once the weather warmed. Figure 2, "2010 Exploration Activity" in Appendix III shows the drill hole locations.

Heavy Mineral Sampling. 96 heavy mineral samples were collected on the Nanuq North Property from August 23 through August 27, 2010. The short program was also based from

PGD's Nanuq Camp. Sampling was performed around helicopter fuel consumption. The helicopter would depart the fly camp with full fuel. From Nanuq Camp to the furthest sampling location was just over 50 kilometres, making fuel and sampling strategies key to maximizing program efficiency. Sampling was done until the helicopter had to return to camp to refuel. Two trips were usually made each day.

Land Use Considerations

All 2010 field work completed on the Nanuq North Project was helicopter supported. The location of helicopter landing areas and description of use is located in Appendix II. A Great Slave Helicopters Ltd. B3 A-Star helicopter was used for the drilling in May and June, while a Bell 206 Long Ranger was used for the sampling program in August.

One temporary fuel cache consisted of 8 to 16 drums (2 to 4 sling loads) of jet fuel to support the short drill moves, initial set-up, and the demobilization of the drill off the Nanuq North property (demobilization). The drill was mobilized to the Nanuq North Property from Rankin Inlet between May 16th and May 18th, and included support from twin-otter, and DC-3 fixed-wing aircraft plus the B3 A-Star helicopter. Demobilization of the drill from the Nanuq North property commenced June 23rd, and final inspection of the drill hole locations was conducted on June 24th. Photos are included in Appendix VI.

Another temporary fuel cache consisting of four drums was used during the sampling program, which also served as a sample cache when necessary. Empty drums were removed and samples collected upon completion of the sample program.

NO aircraft crossed into Ukkusiksalik National Park at any time during either the drilling or sampling program. A Park Orientation was held with Parks Canada in Repulse Bay on May 28, 2009 (Appendix V).

Diamond Drilling. As all drilling was conducted on ice, guidelines for On-Ice drilling were closely followed. A settling tank was used to remove suspended solids from return water. Water intake hoses were equipped with mesh screens to ensure no entrapment of fish. No salt was used for drilling.

Heavy Mineral Sampling. No aircraft crossed the south border into Ukkusiksalik National Park, which also identifies the northern boundary of the Nanuq North property. Each till sample pit was backfilled once the sample was completed to ensure minimal ground disturbance.

Wildlife and Environmental Studies

Crews were encouraged to record any wildlife seen throughout the exploration program. A wildlife log was established and accessible to all. Crews were instructed on the appropriate

actions to take when encountering wildlife on the tundra and in camp throughout the program. Where possible, all interaction with any wildlife was discouraged.

Very little wildlife was spotted in the Nanuq North Project area. Scattered caribou were occasionally spotted en route to the property as flight levels were high. The night shift drill crew saw caribou on the opposite side of the target lake on a couple of separate occasions:

Mammal Species	How Many?	Age	Sex	Habitat Type	Date	Location Description	Weather
Wolf	1	?	?	Hilly tundra	5/23/10	Drill site	Clear
Caribou	Small herd	?	?	Hilly tundra	5/30/10	Drill site	Clear
Caribou	Small herd	?	?	Hilly tundra	6/1/10	Drill site	Clear
Caribou	4	?	?	Hilly tundra	6/12/10	Drill site	Clear
Wolf	1	?	?	Hilly tundra	6/15/10	S of Drill site	Clear
Caribou	3	?	females	Hilly tundra	8/24/10	Sample site	Partly cloudy
Caribou	1	?	Male	Hilly tundra	8/26/10	Sample site	Clear

No environmental studies were conducted in 2010.

Community Consultation

As a very short timeframe was available to prepare, the Nanuq North drill program used logistics already in place for Peregrine Diamonds' 2010 exploration program. These logistics included fixed wing contracts with Arctic Sunwest, a helicopter contract with Great Slave Helicopters, camp set-up and operational costs, which included local Inuit camp helpers, plus a drill contract with Boart Longyear that was originally organized for Peregrine's summer drilling program. Given that everything was already in place and Indicator was sharing space in PGD's Nanuq Camp, there was no room for Indicator to hire locally for the drill program, and the small size of the sampling program also made it logistically difficult to train local help.

Indicator however, diligently maintains contact with communities in the vicinity of the Nanuq North project, including Repulse Bay, Baker Lake, Chesterfield Inlet and Rankin Inlet. Refer to Appendix V for an outline of the past two years of community consultations relevant to the Nanuq North project.

Site Visits

There were no site visits or inspections during either the 2010 drilling or heavy mineral sampling exploration programs.

Reclamation Work

Progressive reclamation work was done in the form of keeping drill sites clean, and ensuring minimal impact on the environment. All exploration materials including empty barrels, were removed from all sites upon completion of work, and brought back to Nanuq Camp. From there, twin otter fixed wing backhauls were used to remove drums from the camp to Rankin Inlet for

disposal at approved facilities. Final drill site inspection was performed upon completion of the drill program on June 24th, 2010.

2011 Work Plan

No exploration is currently planned for the 2011 field season. In-office data integration and review will be ongoing.

Appendix I: Nanuq North Land Tenure

Tenure ID	CLAIM NAME	NTS SHEET	RECORD DATE	CLAIM ACREAGE	CLAIM OWNER
F90022	FA 1	056G10	2004-10-08	1059.00	Indicator Minerals Inc
F90023	FA 2	056G10	2004-10-08	2492.00	Indicator Minerals Inc
F90025	FA 4	056G10	2004-10-08	516.50	Indicator Minerals Inc
F90024	FA 3	056G10	2004-10-08	2582.50	Indicator Minerals Inc
F90026	FA 5	056G10	2004-10-08	2273.00	Indicator Minerals Inc
F88409	JP 31	056G07	2004-11-04	604.31	Indicator Minerals Inc
F88408	JP 30	056G07	2004-11-04	344.76	Indicator Minerals Inc
F88472	JP 32	056G10	2004-11-04	1549.50	Indicator Minerals Inc
F88469	JP 29	056G10	2004-11-04	2572.50	Indicator Minerals Inc
F88407	JP 22	056G10	2004-11-04	2066.00	Indicator Minerals Inc
F88473	JP 33	056G10	2004-11-04	1549.50	Indicator Minerals Inc
F88468	JP 28	056G10	2004-11-04	2582.50	Indicator Minerals Inc
F88463	JP 23	056G10	2004-11-04	2582.50	Indicator Minerals Inc
F88474	JP 34	056G10	2004-11-04	1549.50	Indicator Minerals Inc
F88467	JP 27	056G10	2004-11-04	2582.50	Indicator Minerals Inc
F88464	JP 24	056G10	2004-11-04	2582.50	Indicator Minerals Inc
F88495	JP 45	056G11	2004-11-04	400.29	Indicator Minerals Inc
F88494	JP 46	056G11	2004-11-04	387.38	Indicator Minerals Inc
F88493	JP 51	056G11	2004-11-04	289.24	Indicator Minerals Inc
F88490	JP 50	056G11	2004-11-04	2066.00	Indicator Minerals Inc
F88487	JP 47	056G11	2004-11-04	2582.50	Indicator Minerals Inc
F88484	JP 44	056G11	2004-11-04	2582.50	Indicator Minerals Inc
F88465	JP 25	056G10	2004-11-04	1278.30	Indicator Minerals Inc
F88466	JP 26	056G10	2004-11-04	1497.80	Indicator Minerals Inc
F88475	JP 35	056G10	2004-11-04	1007.10	Indicator Minerals Inc
F88483	JP 43	056G11	2004-11-04	1725.10	Indicator Minerals Inc
F88488	JP 48	056G11	2004-11-04	2281.30	Indicator Minerals Inc
F88489	JP 49	056G11	2004-11-04	1911.00	Indicator Minerals Inc
F90093	FA 12	056G10	2004-10-08	1107.90	Indicator Minerals Inc
F90097	FA 16	056G10	2004-10-08	1399.40	Indicator Minerals Inc
F90092	FA 11	056G10	2004-10-08	1124.90	Indicator Minerals Inc
F90091	FA 10	056G10	2004-10-08	1698.80	Indicator Minerals Inc
F88496	JP 39	056G11	2004-11-04	428.69	Indicator Minerals Inc
F90030	FA 9	056G10	2004-10-08	1870.90	Indicator Minerals Inc
F88480	JP 40	056G11	2004-11-04	2582.50	Indicator Minerals Inc
F88481	JP 41	056G11	2004-11-04	284.07	Indicator Minerals Inc

F88482	JP 42	056G11	2004-11-04	1149.20	Indicator Minerals Inc
F90029	FA 8	056G10	2004-10-08	1997.10	Indicator Minerals Inc
F90027	FA 6	056G10	2004-10-08	2399.90	Indicator Minerals Inc
F90028	FA 7	056G10	2004-10-08	1607.70	Indicator Minerals Inc
F90096	FA 15	056G10	2004-10-08	2186.60	Indicator Minerals Inc
F90095	FA 14	056G10	2004-10-08	2186.60	Indicator Minerals Inc
F90094	FA 13	056G10	2004-10-08	2174.50	Indicator Minerals Inc
F88445	JP 5	056G10	2004-11-04	710.18	Indicator Minerals Inc
F88450	JP 10	056G10	2004-11-04	355.73	Indicator Minerals Inc
F88451	JP 11	056G10	2004-11-04	606.88	Indicator Minerals Inc
F88457	JP 17	056G10	2004-11-04	839.31	Indicator Minerals Inc
F88458	JP 18	056G10	2004-11-04	1045.90	Indicator Minerals Inc
F88459	JP 19	056G10	2004-11-04	2582.50	Indicator Minerals Inc
F88460	JP 20	056G10	2004-11-04	2582.50	Indicator Minerals Inc
F88406	JP 21	056G10	2004-11-04	1265.40	Indicator Minerals Inc

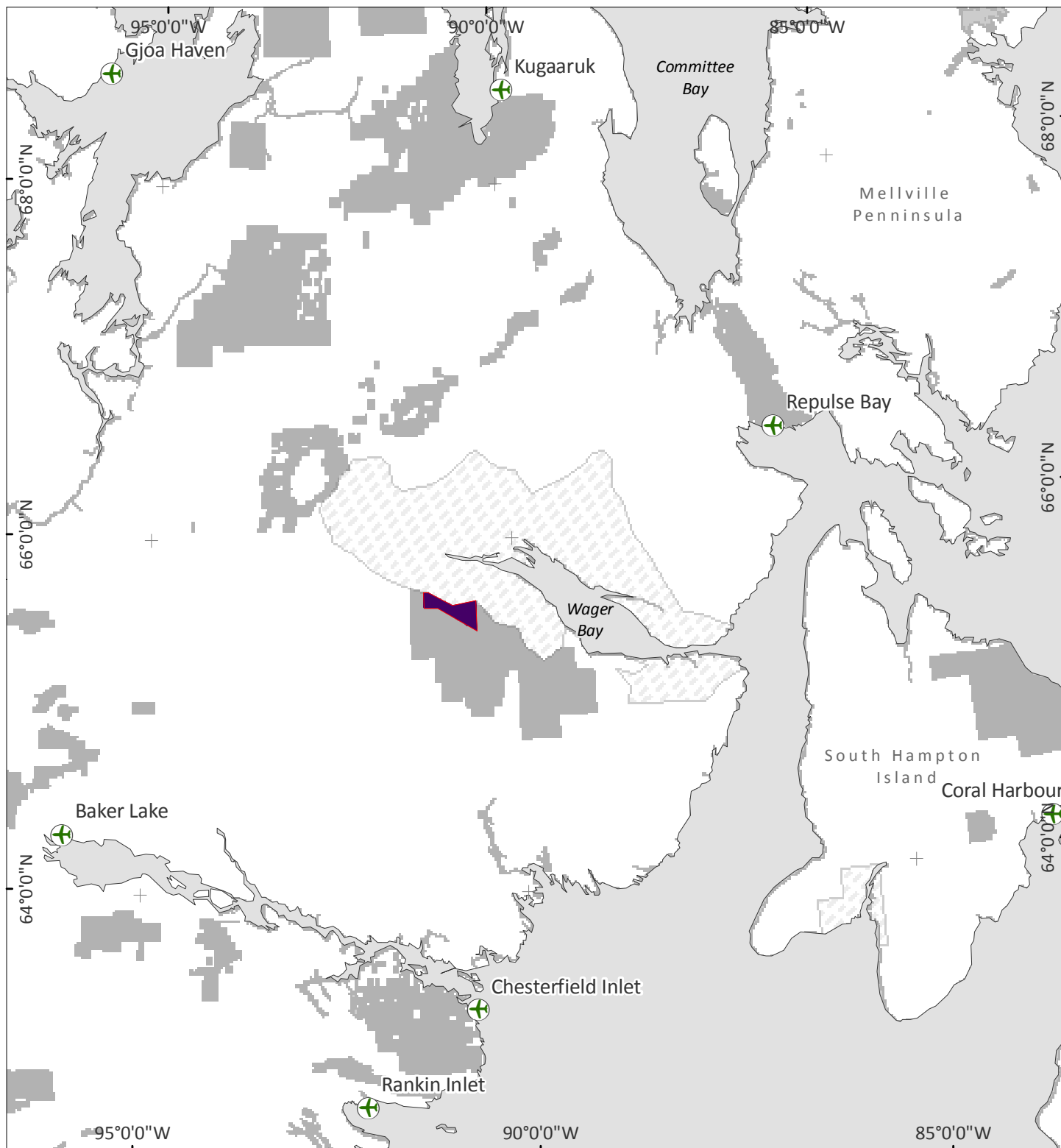
Appendix II: Helicopter Landing Sites

Exploration Component	X_Nad83z15	Y_Nad83z15
<i>Drill Sites</i>		
NN-2010-01	595571	7277982
NN-2010-02	595572	7277982
NN-2010-03	595568	7277979
NN-2010-04	595570	7277980
NN-2010-05	595680	7277928
NN-2010-06	595476	7277944
Survival Shack	595775	7277898
<i>Fuel Caches</i>		
Cache-1	596670	7276532
Cache-2	582860	7253678
<i>Heavy Mineral Sample Sites</i>		
NQT10001	587931	7280812
NQT10002	587122	7280641
NQT10003	586524	7280981
NQT10004	585798	7280641
NQT10005	585236	7280072
NQT10006	584413	7280003
NQT10007	583949	7279396
NQT10008	583142	7280286
NQT10009	582331	7280170
NQT10010	581303	7279213
NQT10011	581117	7282579
NQT10012	585509	7283324
NQT10013	584571	7283118
NQT10014	583431	7282901
NQT10015	585635	7285810
NQT10016	584443	7285130
NQT10017	583754	7284689
NQT10018	582784	7284670
NQT10019	581990	7284690
NQT10020	582168	7281690
NQT10021	582762	7282081
NQT10022	583080	7282752
NQT10023	585753	7284238
NQT10024	586813	7284732
NQT10025	588757	7280796
NQT10026	588005	7282092
NQT10027	588363	7283657





NQT10028	587547	7284550
NQT10029	591325	7282904
NQT10030	590715	7281689
NQT10031	589831	7280981
NQT10032	613782	7265142
NQT10033	613516	7267048
NQT10034	613542	7268144
NQT10035	613458	7269064
NQT10036	613494	7270506
NQT10037	613788	7272264
NQT10038	613441	7273086
NQT10039	612960	7274224
NQT10040	613260	7275065
NQT10041	613219	7276095
NQT10042	613129	7277467
NQT10043	613412	7278694
NQT10044	613063	7280367
NQT10045	613221	7282216
NQT10046	611666	7266412
NQT10047	610085	7267328
NQT10048	610828	7268066
NQT10049	611601	7268952
NQT10050	612392	7270025
NQT10051	608351	7268791
NQT10052	607984	7269898
NQT10053	609568	7270849
NQT10054	609780	7272019
NQT10055	610294	7273025
NQT10056	604478	7280500
NQT10057	607130	7280167
NQT10058	608017	7280749
NQT10059	609021	7280864
NQT10060	609739	7280787
NQT10061	609876	7281535
NQT10062	610512	7281107
NQT10063	609873	7279812
NQT10064	608177	7278684
NQT10065	606392	7278836
NQT10066	605896	7270022
NQT10067	606519	7269492
NQT10068	609538	7268209
NQT10069	607981	7276260

NQT10070	608427	7276609
NQT10071	608822	7276896
NQT10072	609551	7277168
NQT10073	610448	7278100
NQT10074	611043	7278819
NQT10075	611320	7276250
NQT10076	610659	7276279
NQT10077	609764	7277812
NQT10078	612066	7276978
NQT10079	611966	7276193
NQT10080	613184	7271514
NQT10081	611529	7273484
NQT10082	612119	7274133
NQT10083	612250	7275286
NQT10084	613071	7278164
NQT10085	611875	7278269
NQT10086	613160	7279892
NQT10087	612748	7280958
NQT10088	613422	7281376
NQT10089	611951	7282276
NQT10090	611990	7279542
NQT10091	611401	7280915
NQT10092	612006	7280974
NQT10093	595321	7277126
NQT10094	595256	7276929
NQT10095	595420	7277192
NQT10096	595730	7277838

Appendix III: Figures



Legend

-  Community
-  Designated Park
-  Nanuq North Property
-  Others Land 27-Nov-10



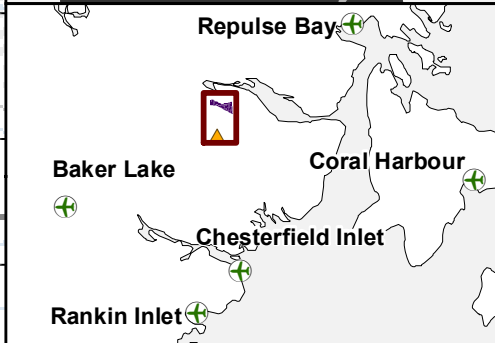
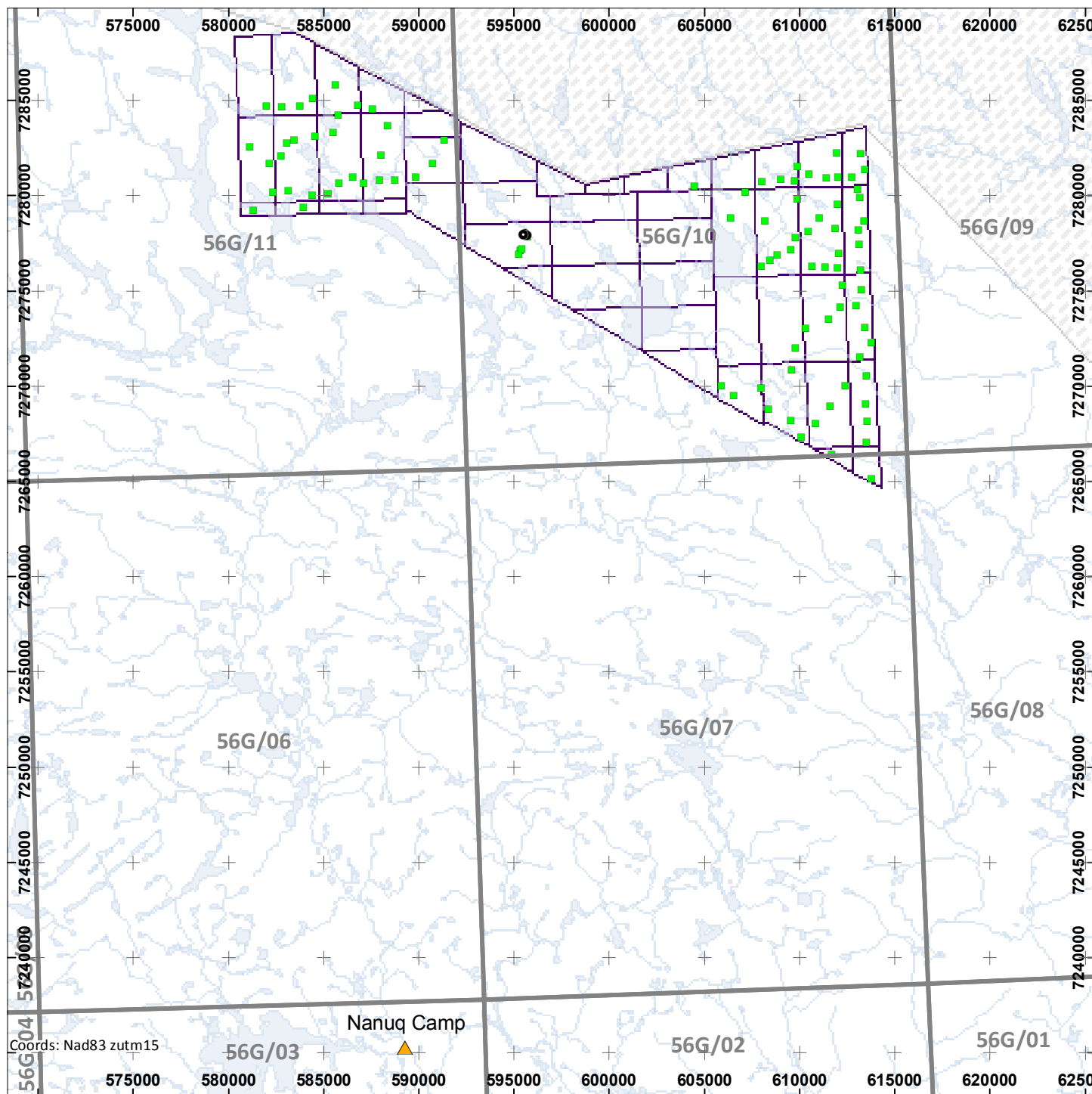
NANUQ NORTH PROPERTY
Nunavut Territory, Canada

2010 Exploration Activity
Figure 1: Property Location

0 Kilometers 200

Scale 1 : 3,500,000

Date: May 2011



- NTS 50K Reference
- Water Course
- Water Body
- Ukkusiksalik National Park
- Nanuq North Property
- Drill Collar
- Helicopter Landing



NANUQ NORTH PROPERTY
 Nunavut Territory, Canada
 NTS Ref: 056G07/10/11
2010 Exploration Activity
Figure 2

0 Kilometers 10

Scale 1 : 200,000

Date: May 2011

Appendix IV: List of Personnel and Contractors

Geological/Logistical Crew:

Indicator Minerals Inc. 275 – 1075 West Georgia Street Vancouver, BC V6E 3C9	Position	Dates Worked
Andrea Maynes	Project Geologist	May 17 – June 26, 2010 August 19 – 29, 2010
Dave Kelsch	V.P. Exploration	May 24 – June 3, 2010 June 14 – 26, 2010 August 19 – 29, 2010

Fay Gin (Independent Consultant)	Position	Dates Worked
Fay Gin	Consulting Geotechnician	June 3 – June 26, 2010

Well Done Cooks Inc. P.O. Box 4583, Smithers, BC V0J 2N0	Position	Dates Worked
Anna Strumecki	Cook/First Aid Attendant	June 4 – June 26, 2010

Helicopter:

Great Slave Helicopters Ltd. Bag 7500, Yellowknife NT X1A 2R3

Other Contractors/Service Providers Used:

Northern Store Box 70, Rankin Inlet, NU, X0C 0G0
--

First Air 20 Cope Drive, Kanata, ON K2M 2V8

Canadian North 300, 5201 50 Ave., Yellowknife, NT X1A 3S9

Discovery Mining Services Ltd. Box 2248, Yellowknife NT, X1A 2P7
--

M & T Enterprises Ltd. Rankin Inlet, NU

Turaarvik Inns North

P.O. Box 40, Rankin Inlet, NU, X0C 0G0

Unaalik Aviation Ltd.

P.O. Box 637, Rankin Inlet, NU, X0C 0G0

Ookpik Aviation Inc.

P.O. Box 239, Baker Lake, NU, X0C 0A0

Shear Minerals Ltd.

Suite 220, 17010 - 103rd Ave., Edmonton, AB, T5S 1K7

Peregrine Diamonds Ltd.

201-1250 Homer St., Vancouver BC, V6B 1C6

SRC Geoanalytical Laboratories

125-15 Innovation Blvd., Saskatoon, SK, S7N 2X8

Appendix V: Community Consultation Log

Community Consultation Log – Indicator Minerals Nanuq North Project (Chesterfield Inlet, Repulse Bay, Kugaaruk)

Last update: July 19, 2010 06:13 PT

(Acronyms:) DL = Denise Lockett, SAO = Settlement Administrative Officer, EDO = Economic Development Officer, HTO = Hunters and Trappers Organization, CLO = Community Liaison Officer, KitIA = Kitikmeot Inuit Association, KIA – Kivalliq Inuit Association,

Date	Time	Contact	Details
May 4, 2009	10:16	Chesterfield Inlet, Hamlet, SAO, EDO	e-mail from DL re: interest/availability for meeting with Mayor and Council, and advice re: community meeting
May 4, 2009	10:54	Repulse Bay, Hamlet, SAO, EDO	e-mail from DL re: interest/availability for meeting with Mayor and Council, and advice re: community meeting
May 4, 2009	10:07	Kugaaruk, Hamlet, SAO, EDO	E-mail from DL re: interest/availability for meeting with Mayor and Council, and advice re: community meeting
May 4, 2009	11:34	Luis Manzo, Jackson Lindell, Kivalliq Inuit Association	E-mail from DL re: information re: community consultation visits and request to pass information along to CLO's
May 7, 2009	8:21	Merrill Boudreau, SAO Kugaaruk	Telephone call from DL re: meeting in community (left message)
May 7, 2009	09:43	Bruce Morley, SAO Chesterfield Inlet	Telephone call from DL: re: meeting in community (left message to return call)
May 7, 2009	11:52	Bruce Morley, SAO Chesterfield Inlet	Telephone call from DL re: confirm meeting with Mayor, availability of Council Chambers for public meeting etc.
May 7, 2009	11:59	Elizabeth A/SAO Repulse Bay	Telephone call from DL: re: confirm e-mail and arrangements for meeting in Hamlet. Mayor just lost his wife – asked to call back Monday to confirm meetings.
May 7, 2009	12:00	Merrill Boudreau, SAO Kugaaruk	Telephone call from DL: meeting in community (left a message)
May 8, 2009	09:50	Bruce Morley, SAO Chesterfield Inlet	e-mail from, confirming Mayor Tootoo available to meet.
May 10, 2009	16:35	Merrill Boudreau, SAO Kugaaruk	E-mail from: meeting arrangement suggestions

May 11, 2009	11:05	Bruce Morley, SAO Chesterfield Inlet	e-mail to, from DL re: confirm availability of meeting room and translator
May 11, 2009	11:12	Merrill Boudreau, SAO Kugaaruk	e-mail to, from DL re: thanks for contact and request additional information regarding Church and translator
May 11, 2009	11:33	Andre Tautu, translator, Chesterfield Inlet	e-mail from, to DL: confirmation of availability to translate at meeting
May 11, 2009	11:37	Elizabeth, A/SAO, Repulse Bay	Telephone call to, from DL re: proposed meeting in community. Elizabeth said she is busy, but will get back to me asap.
May 11, 2009	12:18	Bruce Morley, SAO Chesterfield Inlet	e-mail from, to DL re confirmation of meeting
May 11, 2009	17:37	Bruce Morley, SAO Chesterfield Inlet	E-mail to, from DL re: meeting poster attached
May 11, 2009	13:41	Luis Manzo, Jackson Lafferty, KIA	Email to, from DL re: meeting synopsis and reminders to CLO's
May 12, 2009	7:18	Guido Tigvareark, Kugaaruk	e-mail from, to DL: re: arrangements for meeting
May 13, 2009	09:58	Father , Kugaaruk	Telephone call to, from DL re: renting church hall for meeting
May 13, 2009	09:59	Guido Tigvareark, Kugaaruk	E-mail to, from DL re: poster for community meeting
May 13, 2009	10:09	Bruce Morley, SAO Chesterfield Inlet	E-mail to, from DL re: poster for community meeting
May 13, 2009	10:18	Elizabeth, Repulse Bay	e-mail to, from DL re: arrangements for meeting.
May 19, 2009	07:11	Jackson Lafferty, KIA	e-mail from, to DL re: meeting reminders sent to CLO's
May 19, 2009	07:40	Luis Manzo, Jackson Lafferty, KIA	e-mail to, from DL re: opportunity to meet following consultation tour on May 28?
May 19, 2009	11:00	Merrill Boudreau, SAO Kugaaruk	Meeting: DL and Magnus re: preparations for community meeting and briefing on common concerns
May 19, 2009	19:00	Public Meeting: Kugaaruk: 58 persons	Public meeting: concerns re: hunting grounds (helicopters) and avoiding rivers. Commitment to learn from HTO where these sensitive areas are. Asked community to let the Hamlet know so that mineral exploration companies can be aware of. Told community to let INAC know of any helicopters disturbing hunting grounds so that they can investigate
May 20, 2009	09:30	Ema Quggutaq, HTO	Meeting with DL re: "hunting" grounds and briefing on exploration activities.
May 20, 2009	10:22	Wally Porter, CLO Gjoa Haven, Jayko Neeveacheak, CLO Takoyoak, Geoff Clark, Director KitlA, Charlie Evalik, President KitlA	e-mail to, from DL re: upcoming meetings in Gjoa Haven and Taloyoak and attached meeting post

May 20, 2009	12:17	Elizabeth, A/SAO Repulse Bay	e-mail from, to DL: confirm arrangements for public meeting
May 21, 2009	07:06	Elizabeth Mapsalak, CLO, Repulse Bay	e-mail from, to DL: confirm meeting arrangements with Mayor and Hamlet, CLARC and HTO
May 21, 2009	11:39	Elizabeth Mapsalak, CLO, Repulse Bay	e-mail to, from DL: confirmation of meeting and thanks for making arrangements. Confirm public meeting arranged by Hamlet.
May 21, 2009	13:43	Elizabeth Mapsalak, CLO, Repulse Bay	e-mail from, to DL: confirmation of meeting
May 24, 2009	08:45	Bruce Morley, SAO Chesterfield Inlet, Andre Tautu (translator)	e-mail to, from DL re: confirmation of arrangements for meeting in Chesterfield Inlet May 25.
May 24, 2009	09:09	Andre Tautu, Chesterfield Inlet	e-mail from, to DL re: confirmation of meeting arrangements
May 25, 2009	19:30	Public Meeting, Chesterfield Inlet (13 persons including Mayor Harry Tootoo, SAO Bruce Morley	Public meeting to introduce Indicator Minerals, previous exploration programs and planned work for 2009.
May 27, 2009	15:00	Repulse Bay	Meeting with Mayor, Council Members and HTO representative.
May 27, 2009	16:19	Paula Hughson, Parks Canada, Repulse Bay	e-mail to, from DL: re orientation recommendation for IME and request to meet on May 28 at 10:00 a.m.
May 27, 2009	20:30	Public Meeting, Repulse Bay	Public meeting to introduce IME, previous exploration programs and planned work for 2009
May 27, 2009	23:11	Paula Hughson, Parks Canada, Repulse Bay	e-mail from, to DL: away until June 5.
May 28, 2009	08:30	Jason Hudson, Parks Canada	Meeting with DL and Magnus re: park orientation
June 3, 2009		John Ningark, MLA Akulliq	Letter to, from Bruce Counts, briefing MLA on exploration plans for 2009
June 3, 2009		Mayor Makabe Nartok & Council, Hamlet of Kugaaruk	Letter to, from Bruce Counts, briefing MLA on exploration plans for 2009
June 3, 2009		Mayor Donat Milortok & Council, Hamlet of Repulse Bay	Letter to, from Bruce Counts, briefing MLA on exploration plans for 2009
June 3, 2009		Johnny Ningeongan, MLA Nanulik	Letter to, from Bruce Counts, briefing MLA on exploration plans for 2009
June 3, 2009		Mayor Harry Tootoo & Council, Hamlet of Chesterfield Inlet	Letter to, from Bruce Counts, briefing MLA on exploration plans for 2009
June 8, 2009	12:22	Jason Hudson, Parks Canada	E-mail to, from Magnus H. re: confirmation of discussion and orientation received
June 8, 2009	13:15	Jason, Hudson, Parks Canada	e-mail from, to Magnus re: response and comment,

			correct summarization of meeting.
June 19, 2009		Elizabeth Kusugak, A/SAO Repulse Bay	Letter and map, sent to, from Denise Lockett requesting information on local place name for exploration area
May 14, 2010	10:20	KIA Director, KIA CLO, SAO, CEDO – Chesterfield Inlet	e-mail to, from DL re: request for advice re proposed community meeting in CI on June 9
May 14, 2010	10:15	SAO, KIA CLO – Repulse Bay	e-mail to, from DL re: request for advice re proposed community meeting in RB on June 7
May 14, 2010	10:10	Veronica Tattuinee, KIA Rankin Inlet	e-mail to, from DL re: request meeting with KIA on June 7
May 17, 2010	09:22	SAO Repulse Bay	e-mail from, to DL re: request for meeting on June 7
May 17, 2010	13:30	Principal, school in Repulse Bay	Telephone call to, from DL re: booking school gym for public meeting on June 7
May 17, 2010	13:46	SAO Repulse Bay	e-mail to, from DL re: request for meeting on June 7
May 18, 2010	06:47	Valerie Ipkarnerk, KIA CLO Chesterfield Inlet	e-mail from, to DL re: request for meeting
May 18, 2010	06:52	Valerie Ipkarnerk, KIA CLO Chesterfield Inlet	e-mail to, from DL re request for meeting and clarification of who Indicator Minerals is (not a mining company)
May 18, 2010	07:17	Valerie Ipkarnerk, KIA CLO CI	e-mail from, to DL re: request for meeting
May 18, 2010	07:20	Valerie Ipkarnerk, KIA CLO CI	e-mail to, from DL re: assistance in organizing meeting
May 18, 2010	08:30	Emily, Hamlet of CI	Telephone call to, from DL re: booking Hamlet Chambers for meeting on June 9
May 18, 2010	08:59	Valerie Ipkarnerk, KIA CLO CI	e-mail to, from DL re: confirmation of meeting arrangements
May 18, 2010	09:06	Valerie Ipkarnerk, Andrea Tautu KIA CI	e-mail to, from DL re: assistance in meeting arrangements
May 18, 2010	09:22	Elizabeth, KIA CLO Repulse Bay	e-mail from, to DL re: arrangements for meeting in Repulse Bay
May 18, 2010	09:30	Elizabeth, KIA CLO Repulse Bay	e-mail to, from DL re: meeting arrangements and attached poster for distribution
May 20, 2010	12:19	Andre Tautu, KIA Director, Chesterfield Inlet	e-mail from, to DL re: available for meeting and able to provide translation services
May 20, 2010	12:37	Andre Tautu, KIA Director, Chesterfield Inlet	e-mail to, from DL re: thank you for responding
May 21, 2010	10:29	Chesterfield Inlet: Hamlet, Northern, KIA, Health Centre, Arctic College, RCMP	Faxed notice from DL re: meeting announcement
May 21, 2010	10:45	Repulse Bay: Hamlet, Northern, HTA, KIA, Health Centre, Arctic College, MLA John Ningark, Ukkusiksalik National Park Office, RCMP, Tusarvik School/DEA,	Faxed notice from DL re: meeting announcement

May 31, 2010	07:39	Veronica Tattuinee, KIA	e-mail to, from DL re: proposed meeting with KIA
May 31, 2010	0743	Veronica Tattuinee, KIA	e-mail from, to DL re: confirmation of meeting with KIA
June 1, 2010	15:04	Chesterfield Inlet KIA Director, CLO, SAO, CEDO	e-mail to, from DL re: reminder of meeting in Chesterfield Inlet on June 9
June 1, 2010	16:06	Repulse Bay KIA CLO, SAO	e-mail to, from DL re: reminder of meeting in Repulse Bay on June 7
June 3, 2010	06:55	Harry Tootoo, Mayor, Hamlet of CI	e-mail from, to DL re: confirmation of availability to meet
June 3, 2010	09:35	Repulse Bay Co-op	Telephone call to, from DL re: catering
June 3, 2010	09:30	Repulse Bay school	Telephone call to, from DL re: school hall rental
June 3, 2010	09:30	Repulse Bay KIA CLO, SAO	e-mail to, from DL re: reminder of meeting in Repulse Bay and request assistance in identifying a translator and advertising the meeting
June 8, 2010		Chesterfield Inlet SAO, EDO, KIA CLO, KIA Director	e-mail to, from DL re: reminder of meeting in Chesterfield Inlet
June 7, 2010	19:00	Steve Mapsalak (Settlement Administrative Officer), Romeo Kopak, Isaac S., Bernard Amautinuvar, Semi Mallicki	Public meeting.
June 8, 2010	10:00	Steve Mapsalak (SAO), Donat Milortok (Mayor)	Information discussion
June 8, 2010	13:30	Hunters and Trappers Association	Informal discussion, left business card behind
June 9, 2010	10:00	Steve Hartman, KIA	Informal meeting
June 9, 2010	19:00	Elizabeth Tautu, Andre Tautu (translator), Harry Tootoo (Mayor), Adam, Marjorie Dobson (SAO), Joe Issaluk, Abraham Kadluk, Rosalie Sammartok, E. Popak, Marjorie, Joey Papak, Mark Papak, Laura Niviatsiak, Kevin Issaluk, Georgina, Simon, Navink, Gloria Mimialik, Valerie, Okpik Amarok, Aaron Alogut, Nathaniel Mimialik, Justin, Leonie Mimialik, Leo Mimialik, Titi	Public meeting
June 10, 2010	10:00	Harry Tootoo (Mayor), Marjorie Dobson (SAO)	Informal discussion
June 30, 2010		Mayor Harry Tootoo (CI), Mayor Donat Milortok (Repulse Bay), MLA Johnny Ningeognan, MLA John Ningark, CI HTO,	Thank you letters including copies of presentation, map and current news releases

		Repulse Bay HTO	