

Quarry and Pit Management Plan

CONTRACT: NPO1301 – Construction of Nanisivik Naval Facility

Location: Nanisivik, Nunavut

Client: Defence Construction Canada

Company: Almiq Contracting Ltd.

Prepared by: Richard Martin

Title/Function: Project Manager

Signature: _____

Date : October 29th , 2014

Revision: 1

Table of Contents

1. Site description	1
2. Mitigation measures	3
Impact on land:	3
Impact on water and drainage pattern:	3
Impact on traffic:	3
Erosion control measures:	3
Stock piling:	3
Noise control:	3
Dust and air control:	4
Permafrost:	4
Hazardous materials management:	4
Safety measures due to proximity of Arctic Bay:	4
3. Site design and development	5
Site access:	5
Drainage:	5
Water usage:	5
Progressive reclamation:	5
Temporary accommodation for workers:	5
4. Quarry operations	6
Timeline:	6
Quantity of explosives being used:	6
Explosives management:	7
Aggregate production techniques:	8
Spill contingency plan:	8
Monitoring and maintenance of equipment:	10
Changes to the original development scenario:	10

5. Reclamation	11
Objectives:	11
Site cleaning:	11
Complete decommissioning of equipment:.....	11
Abandonment of active quarry face:	11
Top soil and vegetation:.....	11
Site landscape:	11
Management of excess aggregates produced:	11
Annex A - Topography.....	12
Annex B - Extent of proposed quarry.....	13
Annex C - Quarry current condition (June 2014)	15

1. Site description:



The proposed site for the development of this quarry was initially proposed in the tender documents. Stantec, who was mandated by our client, Defense Construction Canada, performed site evaluations prior to tender. The results of their investigations formed part of the tender documents. The proposed site has already been operated as a quarry and has shown to hold sufficient volumes of adequate material for our project needs.

It is located along the access road to the Naval Facility construction site. Approximately 3km from the construction camp, it is otherwise isolated from all other dwellings, installations or human activities. The closest living community is Arctic Bay, located at 33 km from the quarry.

The quarry is for the most part dolomite with an identified diabase dyke which has been found to be suitable for the production of larger "armour stone" elements required throughout the project. The proposed quarry presents an exposed face of approximately 17m in height.

Inspection of the site in June 2014 revealed no special geographic or ecologic features that need be considered or preserved throughout quarry development. Access to the site will be as shown in the following sections.

See Annexe A for topographic information and overall dimensions of potential quarry proposed by client. See Annexe B for additional coordinates showing extent and position of diabase dyke.

2. Mitigation measures

Quarry development carries the risk of various adverse environmental effects. This section identifies these effects and sets out the relevant planned mitigations measures that will minimize their negative impacts.

Impact on land:

As the change in the topography of the land due to quarrying activities is inevitable, measures to restore as much as possible the original conditions of the site will be taken. These measures will consist in filling the excavated zones with waste materials from the quarry (not being used for the production of aggregates) at the end of operations, respecting surrounding grades, etc...

Impact on water and drainage pattern:

We have observed the natural drainage mechanisms of the site as it exists prior to commencing our works. We will manage runoff water during our operation of the quarry by creating the required slopes and trenches on site that will allow the drainage as it currently exists to be maintained without generating any additional pooling.

Impact on traffic:

Although the traffic on the adjacent road is low, measures will be taken for quarrying blast operations, in order to reach the zero incident target for the road users. Traffic and access will be closely monitored and controlled, the road will be closed off when required for blasting. Flag men will regulate the traffic in coordination with the blaster.

Erosion control measures:

Quarrying activities as well as aggregate stockpiling may accelerate erosion dramatically, mainly by exposing large areas of soil or aggregates to rain and runoff water. Thereby, special attention will be placed on the monitoring of the eroding effects of operations and of drainage water. The erosion of the various quarry elements will be monitored throughout our presence on site, as per the planned quarry timeline described further in a subsequent section of this management plan.

Stock piling:

Stock piling of materials produced within the quarry site will take into account drainage considerations in order to prevent water accumulation or modifications to the course of flowing runoff water. This will be managed through the careful application of landscaping and trenching operations.

Noise control:

Noise is generated by a number of different activities carried out at the quarry including: drilling, rock breaking, crushing, extraction, blasting, truck and machinery operation. The noise

and vibrations produced will not have a significant impact on human activity due to the distance to the camp or the closest habitations. Vigilance will be put forth in monitoring any evident impact on wildlife for the short duration of the project.

Machinery will be regularly maintained to ensure that noise produced from machinery is kept to a practicable minimum.

Dust and air control:

Quarrying activities will inevitably produce dust particles, resulting from blasting operations or during the crushing and screening steps. The control of dust will be made by wet suppression using water sprinklers. Regarding, the exhaust fumes from machines, their impact will be minimised since these machines are in good mechanical conditions and will be subjected to regular inspection and maintenance on site. Efficient extraction of dust on drilling equipment and good blasting practices will also contribute to maintain the quality of air.

Permafrost:

In order to prevent any changes to the permafrost levels due to our development and operation of the quarry, we will make sure we do not excavate or blast to any depth exceeding that of the current active layer and prevent any water accumulation and pooling by managing water drainage as previously described.

Hazardous materials management:

Dispositions will be taken to avoid or mitigate potential adverse effects on the environment due to the use, disposal and transportation of hazardous substances (fuel, oil or explosives).

All storage, transport and operating conditions must meet the requirements of licences under the hazardous substances (Health Canada /Workplace Hazardous Materials Information System). Explosives and detonators are not stored on site. Fuel, lubricant and waste oil storage, will be managed in such a way as to prevent contamination of water and soil. Qualified personnel with significant experience in quarrying and aggregate production will be responsible for applying and enforcing adequate prevention measures.

Safety measures due to proximity of Arctic Bay:

Since the location of the warehouses is far enough from Arctic Bay (33km), the explosives stored do not represent a danger to its inhabitants.

3. Site design and development

Site access:

The proposed quarry can be accessed directly from the adjacent unmarked road. A u-turn area will be provided a short distance further along the road for rock-trucks. Access to the quarry will come from the south side, exit from the north. The intended staging area of the installation of heavy equipment and the stockpiling and managing of material being transformed is currently approximately 47m (distance of rock face from edge of road) by 63m wide.

Drainage:

Natural drainage occurs from the south and the hills to the east, northward. The general natural drainage mechanisms will be preserved and maintained throughout quarry operations.

Water usage:

A certain volume of water will be required throughout quarrying activities, mainly for dust suppression purposes.

Progressive reclamation:

Progressively rehabilitating the site can reduce the overall risk of inadequate final rehabilitation. The objective is that, once quarry operation for this project has been completed, the quarry site be rendered safe, sustainable and visually coherent to its surrounding. As detailed in the previous section, the excavated zones will continuously be filled with waste materials from the quarry, and more generally the site landscape will be kept in an appropriate condition. Once the blasted faces are cleaned up and freed of any loose material, the resulting surfaces will be considered stable and completely reclaimed. Reclamation activities will therefore take place in an ongoing manner, throughout other production operations.

Temporary accommodation for workers:

Some dispositions will be taken to guaranty the best working conditions for the quarrying staff. Temporary facilities such as a portable toilet or dining facilities will be provided.

4. Quarry operations

Aggregate materials will be produced through blasting of existing rock structures. Blast material will then be transformed through the use of scalping, crushing and screening heavy equipment. The transformed aggregates will be both stockpiled on the quarry site and transferred directly to their site locations where they will be put to final use.

Timeline:

Fall 2014: mobilization of equipment and explosives warehouses; preliminary set-up of quarry in preparation for beginning of quarry operation in 2015

Summer / Fall 2015: finalizing quarry installation; production of approximately 140,000T of aggregate; progressive reclamation

Summer / Fall 2016: final reclamation; inspection and monitoring of reclaimed site while other phases of project continue; correction of any discrepancies or performance of general improvements

Summer / Fall 2017: monitoring of reclaimed quarry site

Summer 2018: monitoring of reclaimed quarry site and final demobilization from Nanisivik

Quantity of explosives being used:

As part of this project, 56000kg of explosives and various detonator items will be used. The details are given as follow:

Mass: 50,000 m³ / 140,000 MT

Explosives:

Rioxam HD	:	29,700 kg
Rioxam WR	:	3,000 kg
Riohit 200 83mm	:	20,300 kg
Booster 400 gr	:	1,560 un

Detonator items:

Rionel DDE 15 m	:	768 un
Rionel DDE 9 m	:	800 un
Rionel SCE 6 m 42 ms	:	100 un
Rionel SCE 6 m 67 ms	:	100 un
Riodet 3,7 m (Electric)	:	150 un
Doubled wire	:	24 rolls

Permafrost: 2,500 m3

Explosives:

Riohit 200 83mm : 3,000 kg

Detonator items:

Rionel DDE 4.9 m : 480 un

Rionel SCE 6 m 42 ms : 100 un

Riodet 3,7 m (Electric) : 50 un

Explosives management:

Explosives and detonators will be stored in 5 warehouses whose distances between each of them meet the requirements (S05-01: Quantity-Distance Principles Manual). On each of these warehouses will be installed equipment (Protectour kit) for a regular inspection of their status. These kits will allow performing a weekly guard tour while maintaining an accurate history. The geographic position of the warehouses is given as follow:

Warehouse 316208:	N-73°-02'-46.5''
	W-084°-32'-09.4''
Warehouse 316984:	N-73°-02'-48.1''
	W-084°-32'-16.2''
Warehouse 316212:	N-73°-02''-48.6''
	W-084°-32.00'-8''
Warehouse 316211:	N-73°-02'-51.4''
	W-084°-31'-53.5''
Warehouse 316210:	N-73°-02'-54.8''
	W-084°-31'-51.6''

The warehouses Key Control Administrator has the authority and power to implement and enforce the key control policy. No other person shall intentionally modify, or duplicate a key. All keys must be kept in a locked and secure room when not in use. Access to keys will be restricted to authorized persons.

People in charge of collecting, transporting and handling of explosives will be trained and experienced for these tasks. Furthermore, they shall pass the applicable blaster certification. A registry of the explosives taken from inventory will be maintained and updated on a regular base.

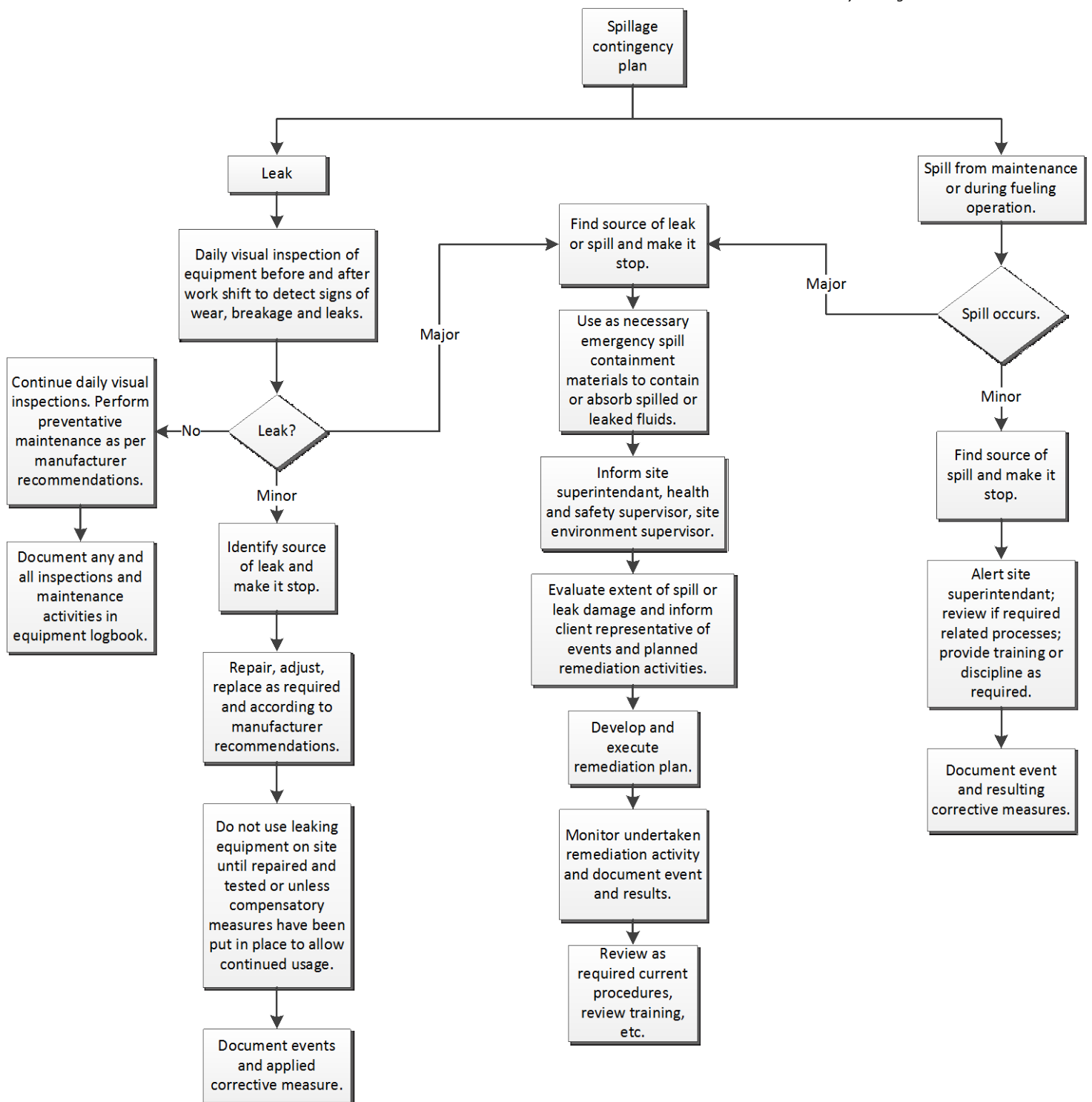
Blasts will be carried in strict compliance with health and safety procedures: site must be completely evacuated and all access blocked completely. A safety perimeter will be established and enforced to avoid ingress during blast operations.

Aggregate production techniques:

Rock is processed into aggregate products using crushing, screening, washing, blending and conveying machinery. The products are moved by trucks, loaders or conveyors to stockpiles. Blasts will be planned in order to produce a stepped configuration of the resulting rock faces. Steps will be approximately 10m high by 10m deep, depending on materials being produced. For the most part, we intend on producing the bulk of required aggregate quantities required from the dolomite that was identified on-site. Armour stone will be produced from the denser diabase material found in the dyke.

Spill contingency plan:

The following section describes in greater detail how one major disturbance to the sites natural state, spillages, will be prevented and managed.



Notes:

- Training of new employees on site regarding risk management and correct procedures
- Make certain a clear equipment fueling procedure exists and is applied
- Equipment maintenance and repair shop must be adequately set-up in order to prevent accidents
- Oil and fluid storage site must be well defined and secure

Monitoring and maintenance of equipment:

All mechanical equipment shall be operated in accordance with recommended Service Manuals for the equipment. All on site workers to be trained in plant and vehicle maintenance for the plant for which they are primarily responsible. Records of the checks and inspections shall be kept and made available on demand. Oil level and oil leakage shall be checked for all the machines, on a daily base.

Changes to the original development scenario:

During the course of operation, it is possible that the original development scenario may need to be reviewed and adapted to actual operation conditions. The main reasons for such a review are:

- Issues with either quality or quantity of material encountered
- Serious incompatibility of mobilized equipment with existing quarry conditions
- Unforeseeable environmental issue for which the interference with quarry operations cannot be tolerated
- Changes to client requirements, specs or to regulation that render original planning impossible or impractical to pursue
- Issues with space management, stockpiling or equipment layout need to be changed

The project needs are sufficiently known that we are confident no unexpected changes to our quarry management plan should occur. Any such change will need to be evaluated on a case-by-case basis. No contingency plans will be elaborated as risk reduction measures.

5. Reclamation

Objectives:

Considering the remoteness of the quarry location and the overall current environment to this site, no particular effort is planned to conceal the quarry from view from any nearby location. However, the worked areas of the quarry have to be left in a neat and tidy condition. Any potential risk of erosion, water accumulation or long term inconvenience must be mitigated.

Site cleaning:

All site waste will be gathered and placed in appropriate containers for removal. Pre and post waste removal inspections will be made. Waste will include domestic, metallic and construction material waste. Client and other local stake-holders will be consulted prior to final closing of quarry and completion of reclamation activities to gather input on desired final outcome of site.

Complete decommissioning of equipment:

The decommissioning of the machinery will be carried out in strict compliance with the procedures. All the measures will be taken to avoid any oil or fuel spill. All equipment used for the work should be removed from the site, including damaged equipment.

Abandonment of active quarry face:

The blasts will be performed in such a way as to result in 10m high maximum steps. Blasted surfaces will be left free of loose materials. A detailed inspection of the exposed face will be conducted in order to identify unstable blocs that may result in rock falls.

Top soil and vegetation:

It was determined that very little top-soil, loose or natural material exists on-site, and no vegetation is to report. There will therefore be no need for planned removal and reclamation activities regarding this matter.

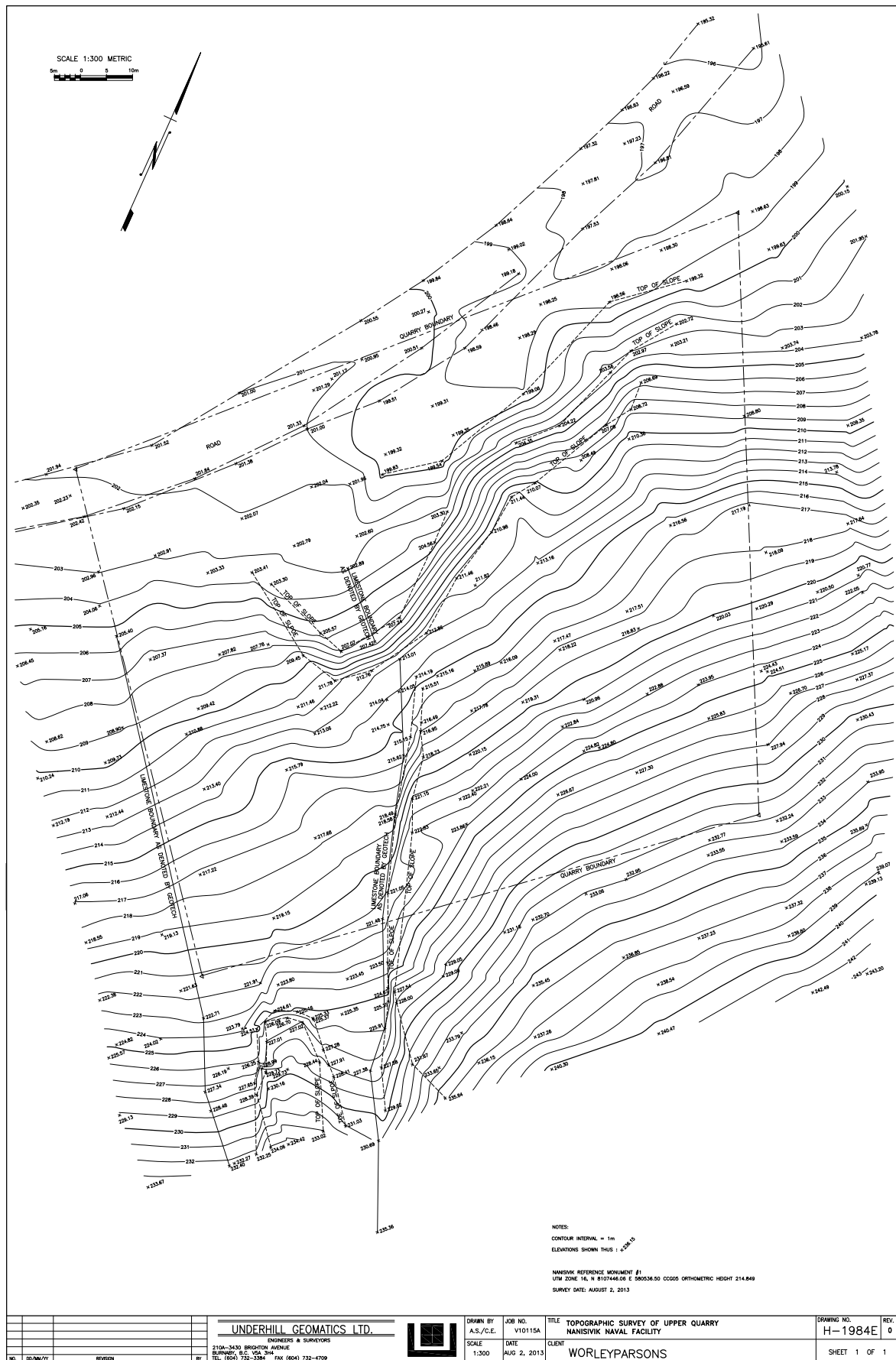
Site landscape:

Because unwanted residual effects of quarry development such as erosion take place gradually over the course of many years, overall landscaping has to be planned to ensure adequate draining and a well-finished, esthetic look to the site. All blasted or manipulated areas have to be stabilized. The site will have to be monitored after quarry operation has ended to ensure erosion is under control, drainage of runoff water is managed and quarried elements are stable.

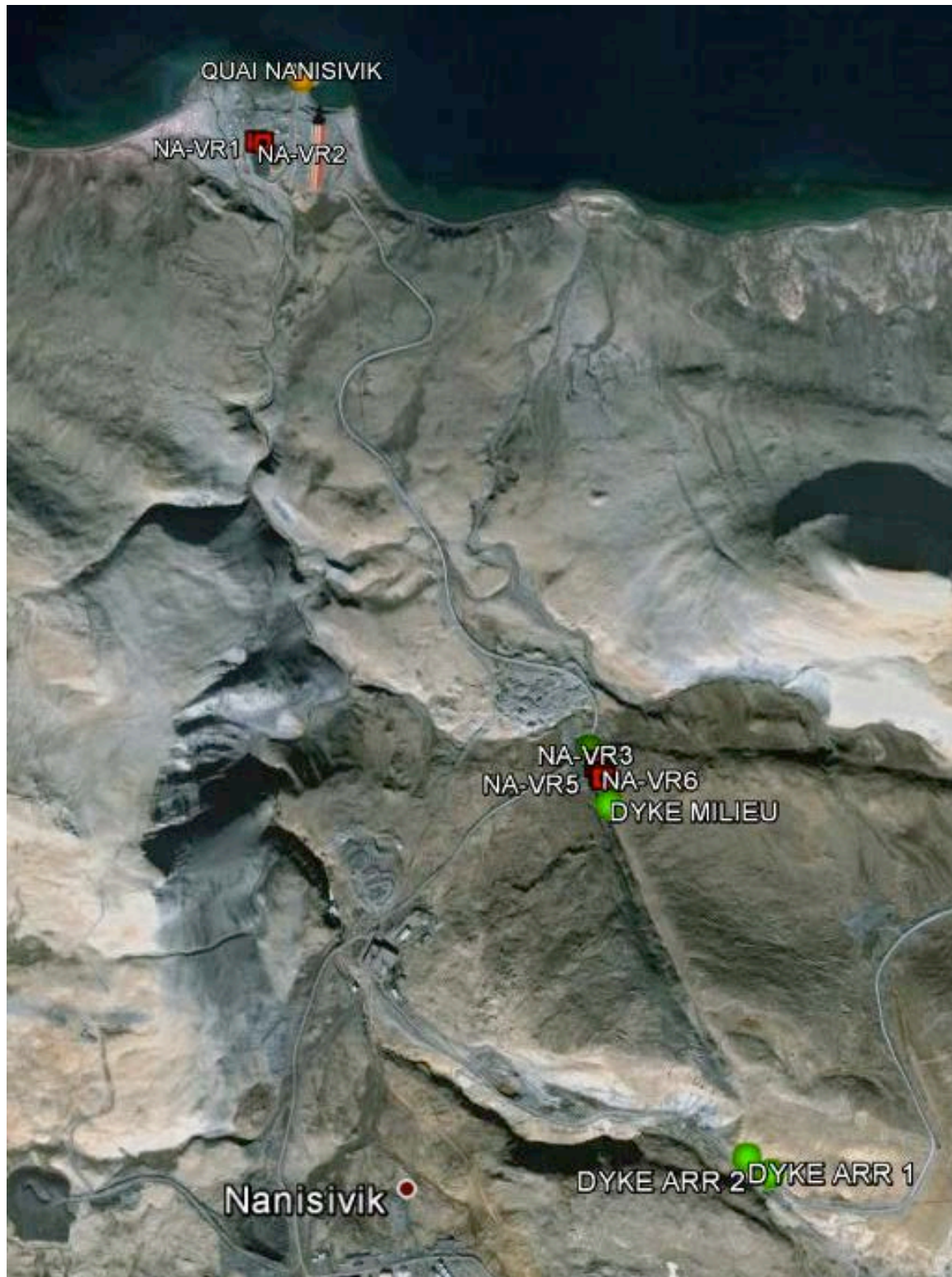
Management of excess aggregates produced:

Quarrying activities will be closely managed to avoid the accumulation of unnecessary stockpiles of aggregate.












Annex A - Topography



Annex B - Extent of proposed quarry



The image shows the overall dimensions of the potential quarry, the following coordinates locate the diabase dyke that were identified as being especially usable for the production of certain types of materials. NA-FR3 is the location that is closest to the road. DYKE ARR2 shows the position of the furthest extremity of the dyke. Also refer to Annexe A.

Symbol	Nom	Position
	DYKE ARR 1	N73 02 19.0 W84 30 09.9
	DYKE ARR 2	N73 02 17.5 W84 30 02.2
	DYKE DIABASE	N73 02 58.0 W84 31 02.0
	DYKE MILIEU	N73 02 52.3 W84 30 55.0
	NA-VR1	N73 04 05.6 W84 33 07.4
	NA-VR2	N73 04 05.8 W84 33 10.0
	NA-VR3	N73 02 56.3 W84 30 59.1
	NA-VR4	N73 02 56.7 W84 30 58.6
	NA-VR5	N73 02 55.1 W84 30 56.8
	NA-VR6	N73 02 55.4 W84 30 57.7
	QUAI NANISIVIK	N73 04 09.7 W84 32 50.3

Annex C - Quarry current condition (June 2014)

