

WPC Resources Incorporated

HOOD RIVER PROJECT:
(CO20: HOODRIVER-001 Mineral Exploration Agreement)

ENVIRONMENTAL MANAGEMENT PLAN

**In the
Hood River (Ulu-Penthouse Lake) Area,
Nunavut.**

(Valid for the period between June 01, 2014 and December 31, 2019.)

PREPARED FOR:

WPC Resources Incorporated,
Suite 202, 750 West Pender Street,
Vancouver, British Columbia.
CANADA V6C 2T7

PREPARED BY:

Bruce E. Goad, P. Geo., M. Sc.,
INUKSHUK EXPLORATION INCORPORATED,
21861 44A Avenue,
Langley, British Columbia.
CANADA V3A 8E1

DATE PREPARED:

May 25, 2014.

DATE REVISED:

_____.

ENVIRONMENTAL PLAN
WPC Resources Incorporated.

TABLE OF CONTENTS

	Page No.
<i>Table of Contents</i>	ii.
<i>List of Figures</i>	iii.
<i>Lists of Tables</i>	iii.
<i>List of Appendices</i>	iii.
<hr/>	
Preamble	1.
1.0 Introduction	1.
2.0 Environmental Protection Planning.	4.
3.0 Stakeholders.....	5.
3.1 <i>Archaeology.</i>	5.
4.0 Flora and Fauna.....	5.
4.1 <i>Disturbance.</i>	6.
4.2 <i>Wildlife Protection.</i>	7.
4.3 <i>Human Safety.</i>	7.
5.0 Land Disturbance.	8.
6.0 Drilling Operations.	8.
6.1 <i>Drilling.</i>	8.
7.0 Waste Management Planning.	9.
8.0 Hazardous Materials.	10.
9.0 Restoration and Rehabilitation.	11.
10.0 Distribution.	11.

LIST OF FIGURES

	Page No.
FIGURE 1. - Location of the HOODRIVER-001 MEA.	2.
FIGURE 2. - Known mineral showings and potential work areas in the Hood River Property.	3.
FIGURE 3. - Barren ground caribou herd ranges, NWT/Nunavut..	6.

LIST OF TABLES

	Page No.
TABLE 1. - WPC Resources Incorporated Ulu Base Camp location.	4.
TABLE 2. - Contact Information, Department of Heritage, Nunavut..	5.
TABLE 3. - Barren ground caribou herd ranges, NWT/Nunavut.	6.

LIST OF APPENDICES

	Page No.
APPENDIX I. Distribution List.	12.
APPENDIX II. Hazardous Waste Management Contacts.	14.
APPENDIX III. Environmental Guideline for the Burning and Incineration of Solid Waste (Nunavut).	15.
APPENDIX IV. Guidelines for the General Management of Hazardous Wastes (Nunavut).	16.

PREAMBLE

This Environmental Plan supplements the company's Fuel Spill Contingency Plan, Wildlife Plan and Remediation Plan and summarizes the company's commitment to environmental responsibility. Much of the material here is also presented in the above plans.

1.0. INTRODUCTION

This Environmental Management Plan applies specifically to WPC Resources Incorporated ("WPC") Hood River (HOODRIVER-001 Mineral Exploration Agreement ("MEA")) Property. WPC is committed to the protection and conservation of the natural environment and to the safety and health of all employees and contractors from any potential harmful effects as a result of both operations and stored materials. The proposed 5 year work program for the Hood River Project includes mapping, prospecting, geochemical sampling, geophysical surveys, drilling, fuel transport, fuel caches. WPC has signed an arrangement with Elgin Mining Incorporated ("Elgin") whereby WPC will have full access to the existing, and fully permitted, Elgin Ulu Minesite Camp. This eliminates the requirement for WPC to establish a seasonal camp on (of off) the Hood River Property.

The lands in the Hood River Project are entirely within Kitikmeot Inuit Owned Lands (IOL) jurisdiction. There is no Federal Crown land within the property (Figure 1).

WPC has submitted to the Kitikmeot Inuit Association ("KIA") the required application for a KIA land use and access permit for the Hood River Property. Additional permit applications have been submitted to the Nunavut Water Board (NWB). The project Proposal has also been submitted to the Nunavut Impact Review Board ("NIRB") for the required screening.

This Environmental Operations Plan will be filed with all the relevant regulatory bodies.

In 2014, WPC will be operating from the Ulu Minesite camp. It is currently fully permitted and lies immediately adjacent to the Hood River Property. As a result, the construction of a Base Camp on the Hood Property will NOT be required.

A five year program, beginning in 2014, is proposed to explore the Hood River Property. No drilling will occur until the required archaeological permit has been obtained. The earliest that this can be received is estimated to be late (August), 2015. Once the permit has been received, the company will begin a drill program on the Hood River Property beginning with a ~10-15 hole drill program in 2015.

Drill sites will be located throughout the Hood River Property, in numerous geologically favorable locations. Initially, most exploration and subsequent drilling programs will focus in or around the 26 mineral showings currently known to exist on the Property (Figure 2). Drilling will not occur until at least late August, 2015 as the property has to be assessed through an archaeological survey and then the application for the required archaeological permit has to be submitted and the permit received.

Equipment and fuel will be temporarily stored, on an on demand basis, at each drill site as it is being actively drilled. Personnel and equipment will be transported to the camp from Yellowknife via fixed wing aircraft (i.e. twin otter). Aircraft can land at the 1200m airstrip

adjacent to the Ulu Minesite, or on and of the larger lakes (Figure 2) within or adjacent to the Property Area (Penthouse, Ulu, Bristol or Reno). The company will have a contract helicopter based onsite at the Ulu Camp. Helicopter transportation will be used to move personnel and equipment from the runway to the camp and for mobility while conducting exploration on the Hood River Property.

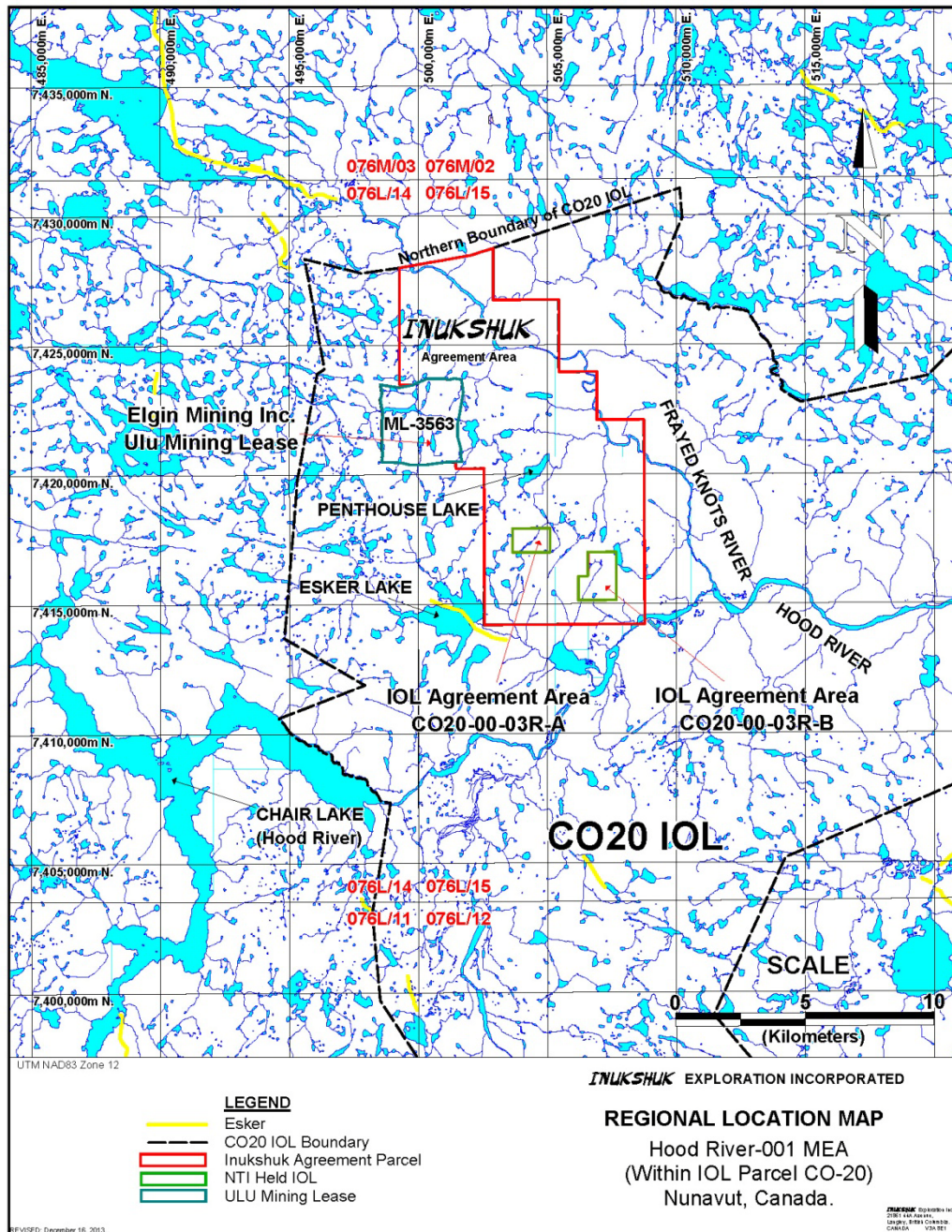


FIGURE 1. Location of the HOODRIVER-001 MEA entirely within the Inuit Owned Land (“IOL”) parcel CO20 and immediately adjacent to the Ulu Mining Lease 3563.

2.

Hood River Project: Environmental Management Plan
PREPARED: May 25, 2014 for WPC Resources Incorporated.

Bruce E. Goad, P. Geo., M. Sc. - **INUKSHUK** EXPLORATION INCORPORATED.

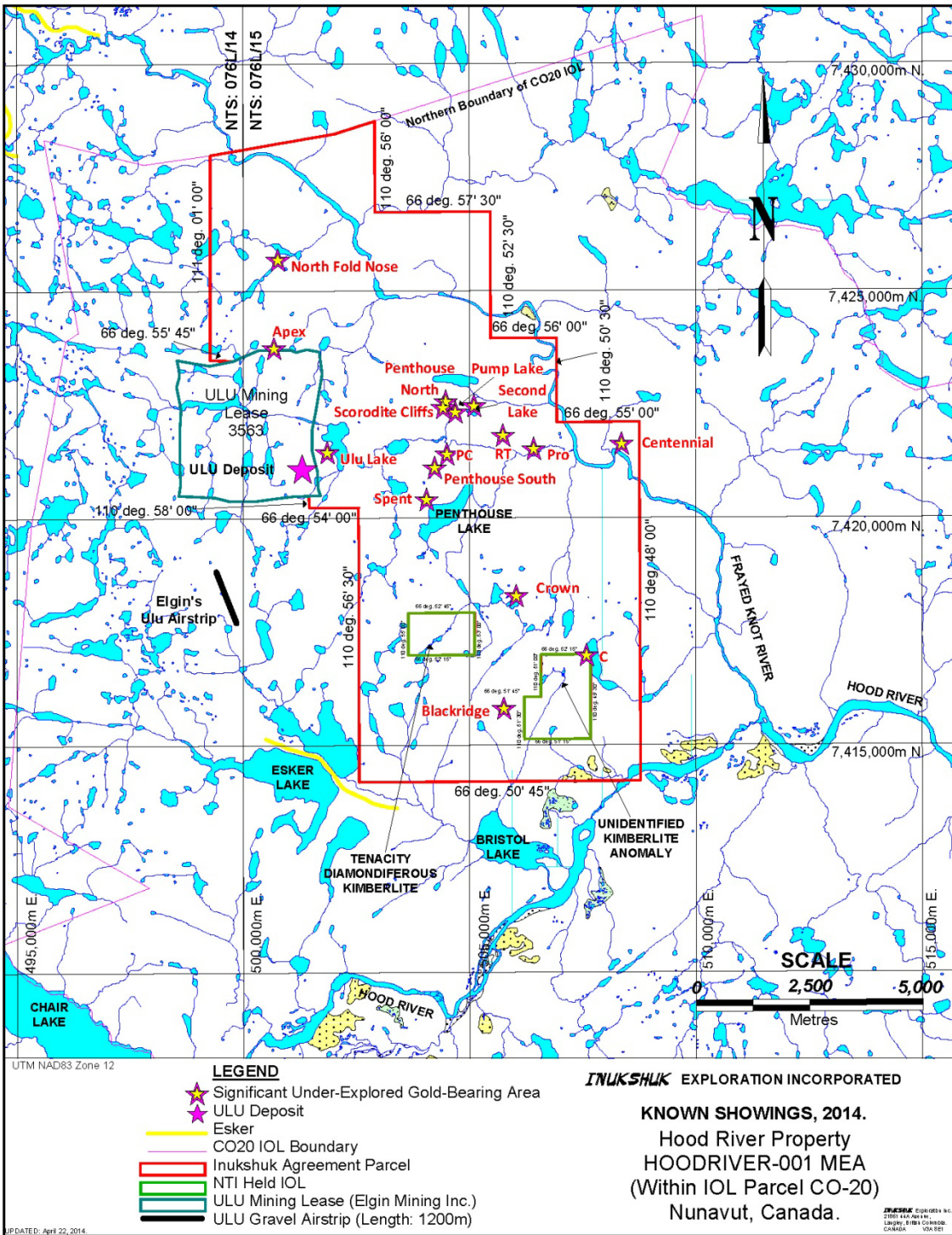


FIGURE 2. Known mineral showings and potential work focus areas within the Hood River Property.

CAMP INFORMATION					
CAMP	STATUS	LATITUDE	LONGITUDE	TELEPHONE	SUPERVISOR
ULU Base	Open June 15 until October, Seasonally.	66° 54' 02" N 7,421,100m North	110° 58' 30" W 501,350m East	To be Determined	To be Determined
UTM NAD83 Zone 12					

TABLE 1. WPC Resources Incorporated Ulu Base Camp location.

2.0 ENVIRONMENTAL PROTECTION PLANNING

The exploration program activities will be assessed for environmental impact risks and all measures will be taken to ensure the protection and preservation of the natural environment. For the duration of the program, documentation and photography will be conducted as to comply with environmental due diligence. All field employees and contractors will be provided with environmental training, and become familiar with relevant regulations. The company will hold the primary responsibility for environment protection from impacts related to the program activities. The proposed program will includes activities including: training, monitoring, reclamation and site clearance surveys which will help to minimize environmental damage. Preference will be given to those contractors that exhibit high standards of environmental management and practice. In the event of a natural or exploration-related emergency, WPC has prepared a Fuel Spill Contingency Plan and a Fuel Management Plan both of which will be located on-site in numerous and highly visible areas.

When conducting all activities, the Terms and Conditions of each of the authorizations from the aforementioned regulatory bodies, will be strictly adhered to by WPC Resources Incorporated and all contractors working onsite for the company.

In addition to the terms and conditions, there are a number of Acts, Regulations, Guidelines and Recommendations that WPC will also observe; these include, but are not limited to:

- *Fisheries Act*
- *Department of Fisheries and Ocean Operational Statements and Guidelines*
- *Caribou Protection Plan/Caribou Protection Measures*
- *Nunavut Waters and Nunavut Surface Rights Tribunal Act*
- *Territorial Lands Act*
- *Nunavut Land Claims Agreement*
- *Environmental Protection Act*
- *Canadian Environment Protection Act*
- *Species at Risk Act*
- *Territorial Wildlife Act*
- *Guide to Spill Contingency Planning and Reporting*
- *Public Health Act*

3.0 STAKEHOLDERS

Stakeholders will be identified and communicated with for the duration of the program; they may be individuals or groups concerned or possibly affected by exploration activities. Relevant approvals from stakeholders and regulatory authorities will be obtained.

CULTURAL CONTACTS IN NUNAVUT			
Contact; Position	Location	Telephone	E-Mail
Department of Heritage, Edward Atkinson, Acting Director	Iqaluit	1-867-934-2044 1-867-975-5500 (Reception)	EAtkinson@gov.nu.ca
Territorial Archaeologist, Sylvie LeBlanc.	Igloolik	1-867-934-2040	SLeBlanc1@gov.nu.ca
Director, Heritage, Nunavut Doug Stenton	Iqaluit	1-867-975-5524	DStenton1@gov.nu.ca
Inuit Heritage Trust	Iqaluit	1-867-979-0731	heritage@iht.ca
Kitikmeot Inuit Association: Wynter Kuliktana, Lands Officer	Kugluktuk	1-867-983-2458	landsofficerkia@qiniq.com

TABLE 2. Contact Information, Department of Heritage, Nunavut.

3.1 *Archaeology.*

With respect to culture and cultural heritage, any archeological or paleontological or fossil sites encountered during the course of work undertaken by the company, the Department of Heritage (“DoH”: formerly called Culture, Language, Elders and Youth (CLEY)) will be contacted immediately. A report will be prepared documenting the discovery and sent to the Territorial Archaeologist, Government of Nunavut (DoH), the Inuit Heritage Trust and the Regional (Kitikmeot) Inuit Association.

4.0 FLORA AND FAUNA

The Hood River Property is not located within any “Protected Areas” in Nunavut, as defined by Environment Canada, which includes the 5 National Wildlife Areas and 11 Migratory Bird Sanctuaries. In addition, the Hood River Project is also not located in, nor does it contain, any Territorial areas of special interest including territorial parks or wildlife sanctuaries. It is near the northwestern range of the Bathurst Herd (Figure 3).

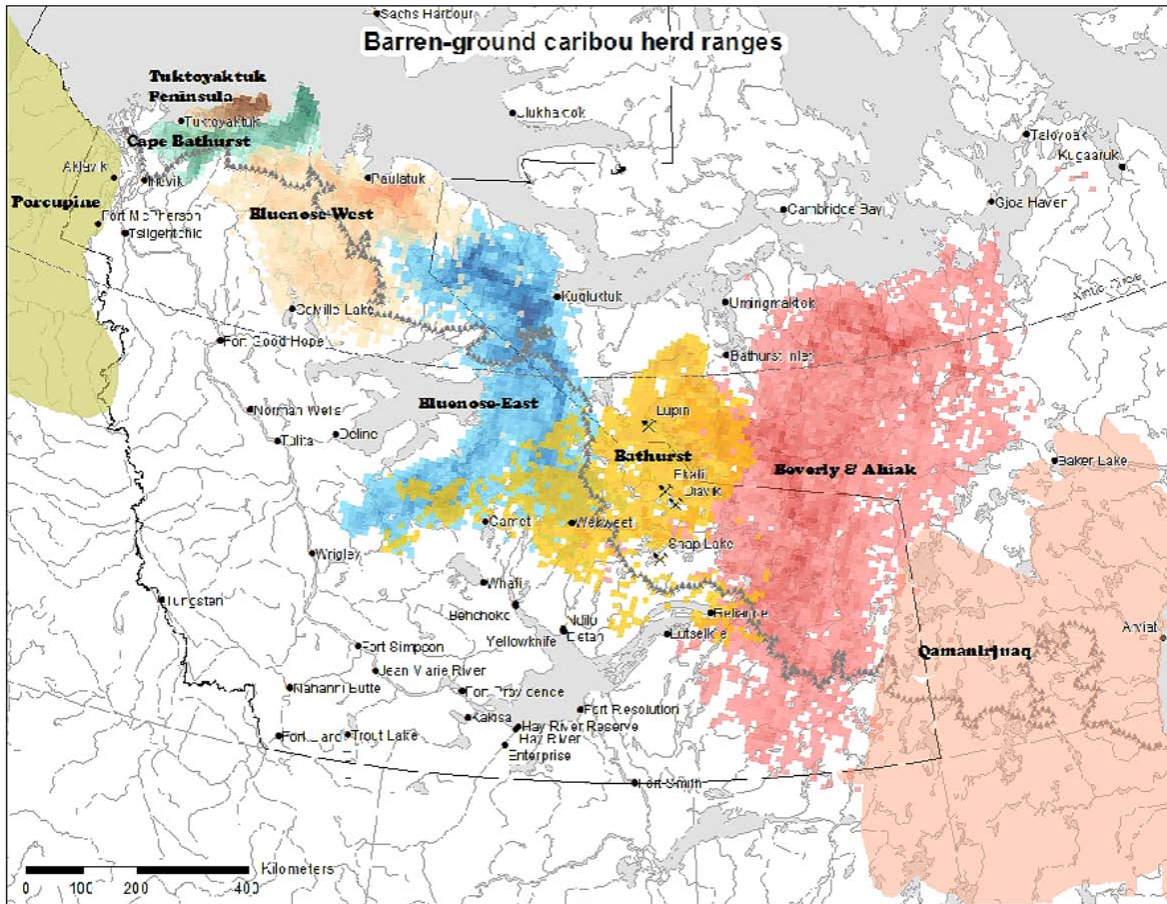


FIGURE 3. Barren ground caribou herd ranges, NWT/Nunavut. This information was obtained from: <http://www.enr.gov.nt.ca/programs/barren-ground-caribou>

Unnecessary impacts and interference with the native flora will be avoided. Fauna sightings will be recorded on the wildlife log sheets provided and will subsequently be reported to the appropriate agencies. **Approaching, disturbing and feeding wildlife will be strictly prohibited, investigated and disciplined**, as WPC Resources respects the natural environment and will adhere to the terms and conditions provided by regulatory authorities. Any individuals conducting business on behalf of WPC Resources who do not respect this prohibition will be penalized and/or have their contract terminated.

4.1 Disturbance

Airborne support will be required to carry out any planned operations. The fact that aircraft will be utilized will bring some inherent risks to the environment. Disturbances that may arise from the use of air transportation equipment during low level flights at arrival or departure from the camp area and during daily crew set-outs. When low altitude helicopter flights are necessary, all efforts to avoid wildlife, dwellings and nesting areas. This policy will be strictly enforced. Pilots will be instructed not to land where wildlife is present unless in an emergency situation. If any emergency landing occurs in the presences of wildlife, it will be documented and submitted as part of the wildlife report which will be submitted to the regulatory authorities as part of the

annual reports. Petroleum product spills, potential impact of flora at a safe helicopter landing site, and the presence of the camp, drill and personnel all will have negative impacts. WPC will use all efforts to mitigate all potential negative interactions.

4.2 *Wildlife Protection.*

Any bears or nuisance wildlife noted at the camp or on the property will be reported to the Camp Manager and subsequently, to the respective authorities immediately. A list of Wildlife Emergency Contacts has been compiled and is presented as Table 3. If any wildlife come in to the vicinity of operations, WPC Resources personnel will follow all necessary protection measures including the ceasing of all operations until the wildlife has moved out of the operations vicinity. WPC will not disturb the animals. WPC has filed a Wildlife Mitigation and Monitoring Plan with the appropriate authorities as part of the permitting process.

WILDLIFE EMERGENCY CONTACT INFORMATION			
NAME	POSITION	TELEPHONE	E-MAIL
WPC Resources Inc.	Vancouver Office		
Bruce Goad	Project Manager, (Inukshuk Exploration Inc.) Cell Number	1-604-533-2255 1-604-866-2254	InukshukExploration@Shaw.ca
Kitikmeot Inuit Association	Front Desk	1-867-983-2458	
Luigi Torretti - KIA	Senior Environmental Officer	1-867-983-2458	ltorretti@qiniq.com
Wynter Kuliktana - KIA	Lands Officer	1-867-983-2458	landsofficerkia@qiniq.com
Mathieu Dumond	Wildlife Manager (Kitikmeot)	1-867-982-7441	MDumond@GOV.NU.CA
Shane Sather	Wildlife Officer III (Cambridge Bay)	1-867-983-4167	SSather@GOV.NU.CA
Allen Niptanatiak	Conservation Officer (Kugluktuk)	1-867-982-7451	ANiptanatiak1@GOV.NU.CA
Monica Angohiatok	Conservation Officer II (Kugluktuk)	1-867-982-7450	MAngohiatok@GOV.NU.CA
Lisa-Marie Leclerc	Regional Wildlife Biologist	1-867-982-7444	LLeclerc@GOV.NU.CA
Jorgen Bolt	Wildlife Technician II (Kugluktuk)	1-867-982-7446	jbolt@GOV.NU.CA
Drikus Gissing	Director Wildlife Management (Igaluit)	1-867-975-7734	DGissing@GOV.NU.CA

Wildlife contacts from Government of Nunavut Directory: <http://www.directory.gov.nu.ca/Search.aspx>
KIA Contacts from KIA Directory: <http://kitia.ca/en/about-kia/staff>

List Updated: May 23, 2014.

TABLE 3. Wildlife Emergency Contacts, Nunavut.

4.3 *Human Safety.*

Registered firearms may be located at camp and at the drill site to ensure safety of all persons on the Property. All persons carrying a firearm must have a valid Licence and will have received the clearance of the Project Manager. Any hunting while conducting business on behalf of WPC Resources, or while staying at the camp, will be strictly forbidden.

As required by Federal legislation, a secure lock and key firearms storage case, will be used and will be managed by the Project Manager. Any firearm discharges, for any reason, will be reported to the Project Manager.

5.0 LAND DISTURBANCE

All necessary permits and permissions will be obtained before any land disturbance is conducted. Earthmoving, vegetation clearing, and any other land disturbances will kept to a minimum at best or avoided whenever possible.

- Earth may be moved to construct small pits or sumps or when taking soil or till samples, however natural depressions and areas free of vegetation will be used when possible. Any topsoil moved will be collected to be used in re-vegetation efforts. If the sump is excavated it will be barricaded until back-filled.
- As the Property lies well above the tree line no trees will be removed to facilitate access. Clearing grasses and sedges growing on steep slope, side hills and drainage banks will be avoided if at all possible.
- All grid lines for laid out for geo-scientific surveys will be kept to a minimal width. Any temporary stakes/lath used as grid markers will be wooden and will be laid flat on the ground at the completion of the program. Plastic flagging tape and spray paint will be used sparingly. Sample sites will be marked using small aluminium tags.

6.0 DRILLING OPERATIONS

Exploration drilling service contracts will be awarded to companies that exhibit high standards of environmental practice and will adhere to the environmental protection plan; penalties will ensue for non-compliance. Any removal of top soils or organic layers will be stockpiled and used for back filling and/or re-vegetation. All waste will be disposed of according to regulation and land use permits

6.1 *Drilling*

- Sites will include enough area for fire protection, but be as small as possible.
- Bio-degradable drilling fluids will be used when possible and will be contained in sumps, to be positioned down slope of drill collars with run-off flow into the sump. All drill water will be treated in sumps which will be a minimum of 31 metres from a normal high-water mark.
- A tarp (or something similar) will be placed around the hole to prevent drill cuttings from contact with the ground surface; any cuttings not used in analysis will be poured back down the hole or disposed of and the hole will be plugged, the casing cut to the ground and capped.
- Any artesian water flow will be reported to the AANDC or NWB Water Resource Officer and be controlled to prevent erosion; these holes will be permanently sealed.
- Temporary emergency shelters and supplies including a radio will be located at each drill site.

7.0 WASTE MANAGEMENT PLANNING

The WPC Waste Management Plan will be rigorously practiced. It will employ a system where materials will be used efficiently, therefore reducing the amount of waste generated. All waste will be segregated into combustible and non-combustible. Non-combustible garbage will be shipped back to Yellowknife for recycling or disposal.

Any materials brought to the site by employees or contractors will be either burned in a modified burn barrel or backhauled to Yellowknife for proper disposal. All disposals will comply with Federal and Territorial legislation and the terms and conditions provided in the water license and land use permits. All burning of materials will follow the Government of Nunavut Environmental Guideline for the Burning and Incineration of Solid Waste. These guidelines have been outlined in the brochure, “*Environmental Guideline for the Burning and Incineration of Solid Waste*” published by the Government of Nunavut. This document has been attached as Appendix 3.

- Litter is strictly prohibited.
- Receptacles will be provided for garbage at camp and at drill sites. Once collected it will be separated into combustible or non-combustible and dealt with as appropriate.
- Food waste will be burnt daily in an appropriate incinerator at the Ulu Camp. Garbage will be backhauled to Yellowknife on a regular basis; however, while pending shipment, on site, it will be stored in sealed containers in a manner as to reduce any possibility of attracting any wildlife.
- Combustible wastes such as paper, cardboard, untreated wood and natural fibers will be burned in a modified burn barrel/incinerator.
- Scrap metal and other non-combustible materials will be sealed and backhauled to Yellowknife for proper disposal.
- Grey water (kitchen and dry) will be collected into a sump, which will be filled and levelled as required.
- Black water (camp sewage) will be collected by the Ulu Camp septic infrastructure and treated. Potentially before the camp is opened, an initial small crew onsite may utilize an outhouse sump (latrine pit) or “Pacto-type” waste containers. All organic material will be either burnt or be removed from site.
- Drilling fluids will be collected in sumps located no less than 31 metres from the normal high water mark of any body.

8.0 HAZARDOUS MATERIALS

All fuel and lubricant handlers will be expected to be familiar with MSDS, WHMIS, Spill and Emergency Responses and protocols for the transportation of dangerous goods. Materials Safety Data Sheets (MSDS) will be available for all hazardous materials on site. All storage areas for chemicals, hazardous materials and fuels will be in secondary containment and inspected daily. Hazardous wastes any include: used oil, oil filters, paint, chemicals, batteries, and used grease. WPC Resources will also ensure that:

- All personnel involved with handling hazardous materials will be familiar with the *Transportation of Dangerous Goods Act and Regulations* and trained appropriately. Disposal of all hazardous materials will occur off-site at an approved licensed disposal facility, such as in Yellowknife.
- While awaiting shipment off-site, all hazardous materials will be stored in clean, dry areas at least 31 metres away from high water marks and will be clearly labeling.
- A waste manifest form will accompany all hazardous waste in transit and all parties will be properly registered as per the Environmental Protection Service (EPS) of the Department of Sustainable Development of the Government of Nunavut.
- All hazardous materials and their volumes will be tracked at the office on-site.

Other Federal and Territorial legislation regarding storage, handling and transport of hazardous materials are included in:

- *National Fire Code of Canada*
- *Fire Prevention Act (Territorial)*
- *Federal Aboveground Storage Tank Technical Guidelines*
- *CCME Environmental Codes of Practice for Underground and Aboveground Storage Tank Systems*
- *Nunavut Guideline for the General Management of Hazardous Waste*
- *The Mine, Health and Safety Act and Regulations (Nunavut)*
- *The NWT and Nunavut Safety Act, the Occupational Health and Safety Regulations*
- *The Workplace Hazardous Materials Information System (WHMIS)*
- *Governments of the Northwest Territories and Nunavut Worker's Compensation Board*
- *Environmental Guideline*
- *The Federal Explosives Act and Regulations*
- *Canadian Environmental Protection Act*
- *Public Health Act*
- *Fisheries Act*
- *Nunavut Waters Act*
- *Nunavut Surface Rights Tribunal Act*
- *Environmental Protection Act*

Contacts for Hazardous Waste Issues – are included Appendix 2 of this Plan. The brochure, “*Guidelines for the General Management of Hazardous Waste*”, has been developed by the Government of Nunavut and is attached as Appendix IV.

9.0 RESTORATION AND REHABILITATION

Upon completion of exploration activities on the Property, WPC Resources will conduct an investigation to ensure all wastes have been removed, all drill holes have been capped and any excavations back-filled. WPC will promote the restoration of the land surface to its original form and encourage re-vegetation growth on areas that may have become disturbed by exploration activities by spreading stockpiled top soils and applying fertilizers where needed. Photographs will be taken before, during and after exploration activities.

10.0 DISTRIBUTION

This document will be circulated to all Directors and WPC personnel involved in the exploration of the Hood River Property (Appendix 1).

Appendix I

Distribution List

Distribution List.

This manual is to be distributed to the following WPC Resources personnel:

WPC Resources Incorporated,

Company Chief Executive Officer:

W. K. Crichy Clarke,
(Vancouver)

Crichy@wpcresources.com

Vancouver, British Columbia.
CANADA V6C 2T7

Telephone: 604-685-1144

Toll Free: 1-877-685-1144

Suite 202, 750 West Pender Street,

Directors:

W. K. Crichy Clarke, C.E.O. Crichy@wpcresources.com
Allan Fabbro, President, afabbro@wpcresources.ca or afabbro@imining.com
Richard Jordens, Director,
Bruce Hamilton, Director,
and
Glen Macdonald, Director.

Geologic Contact / Consulting Geologist:

Bruce Goad, P. Geo., M. Sc.
INUKSHUK EXPLORATION INC.
(Langley, British Columbia)
InukshukExploration@Shaw.ca

Geologists:

Yet to be hired.
Yet to be hired.
Yet to be hired.
Yet to be hired.

All Field Staff:

Yet to be hired.
Yet to be hired.
Yet to be hired.
Yet to be hired.

Camp Manager:

Yet to be hired.

Safety Officer

Yet to be nominated.

All Camp Staff

Yet to be hired.
Yet to be hired.
Yet to be hired.

Appendix II

Hazardous Waste Management Contacts

The following list was compiled from Appendix 11 of the Government of Nunavut *Guideline for the General Management of Hazardous Waste*. (Appendix IV). A digital copy of this brochure can be downloaded at:

([http://env.gov.nu.ca/sites/default/files/Guideline%20-%20General%20Management%20of%20Hazardous%20Waste%20\(revised%20Oct%202010\).pdf](http://env.gov.nu.ca/sites/default/files/Guideline%20-%20General%20Management%20of%20Hazardous%20Waste%20(revised%20Oct%202010).pdf))

GOVERNMENT OF NUNAVUT CONTACTS

1. **Environmental Protection Division,**
Department of Environment,
Inuksugait Plaza,
P.O. Box 1000, Station 1360,
Iqaluit, NU, X0A 0H0
Phone: (867) 975-7729 Fax: (867) 975-7739
2. **Motor Vehicles Headquarters Division,**
Department of Economic Development and Transportation,
Building 1104 A,
Inuksugait Plaza,
PO Box 1000, Station 1500,
Iqaluit, NU, X0A 0H0
Phone: (867) 975-7800 Fax: (867) 975-7870
3. **Workers' Safety and Compensation Commission,**
P.O. Box 669, Baron Building/1091,
Iqaluit, NU, X0A 0H0
Phone: 1-877-404-4407 (toll free) Fax: 1-866-979-8501
4. **Department of Community and Government Services,**
(all Divisions)
P.O. Box 1000, Station 700,
4th Floor, W.G. Brown Building,
Iqaluit, NU, X0A 0H0
Phone: (867) 975-5400 Fax: (867) 975-5305
5. **Office of Chief Medical Health Officer of Health,**
Department of Health and Social Services,
P.O. Box 1000, Station 1000,
Iqaluit, NU, X0A 0H0
Phone: (867) 975-5774 Fax: (867) 975-5755
6. **Office of the Fire Marshall ,**
(Nunavut Emergency Services Division)
Department of Community Government and Transportation,
P.O. Box 1000, Station 700,
Iqaluit, NU, X0A 0H0
Phone: 867-975-5315 Fax: 867-979-4221
7. **NT-NU 24 Hour Spill Report Line.**
(Emergency 24 Hour Calling)
Phone: (867) 920-8130 Fax: (867) 873-6924
E-mail: spills@gov.nt.ca

8. **Nunavut Emergency Management.**
(Emergency 24 Hour Calling)
Headquarters: (867) 979-6262 or 1-800-693-1666
Kitikmeot: (867) 983-2542

GOVERNMENT OF CANADA CONTACTS

1. **Indian and Northern Affairs – Nunavut Region**
P.O. Box 2200
Iqaluit, Nunavut X0A 0H0
Telephone: (867) 975-4500 Fax: (867) 975-4560
2. **Department of Transport – Road, Rail, Marine, Air**
P.O. Box 8550
344 Edmonton Street
Winnipeg, Manitoba R3C 1P6
Telephone: 1-888-463-0521 (toll free)
Fax: (204) 983-8992 Road, Rail and Marine only
Fax: (204) 983-1734 Air only
3. **Environment Canada (NWT and Nunavut)**
5019 52nd Street
Yellowknife, Northwest Territories X1A 1T5
Telephone: (867) 669-4730 Fax: (867) 873-8185

Appendix III

Environmental Guideline for the Burning and Incineration of Solid Waste (Nunavut)

http://env.gov.nu.ca/sites/default/files/guideline_-_burning_and_incineration_of_solid_waste_2012.pdf

Appendix IV

Guidelines for the General Management of Hazardous Waste (Nunavut)

[http://env.gov.nu.ca/sites/default/files/Guideline%20-%20General%20Management%20of%20Hazardous%20Waste%20\(revised%20Oct%202010\).pdf](http://env.gov.nu.ca/sites/default/files/Guideline%20-%20General%20Management%20of%20Hazardous%20Waste%20(revised%20Oct%202010).pdf)