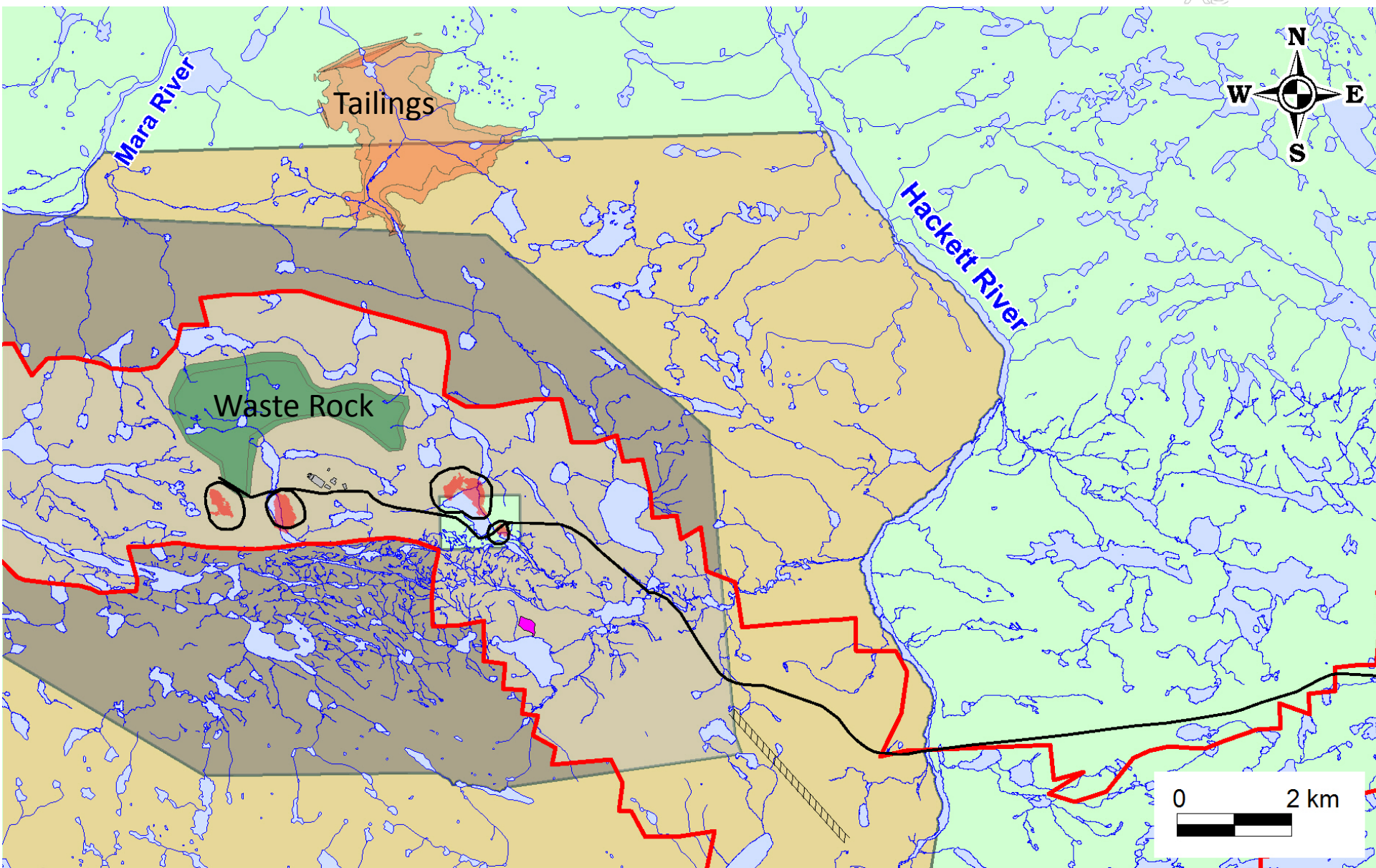
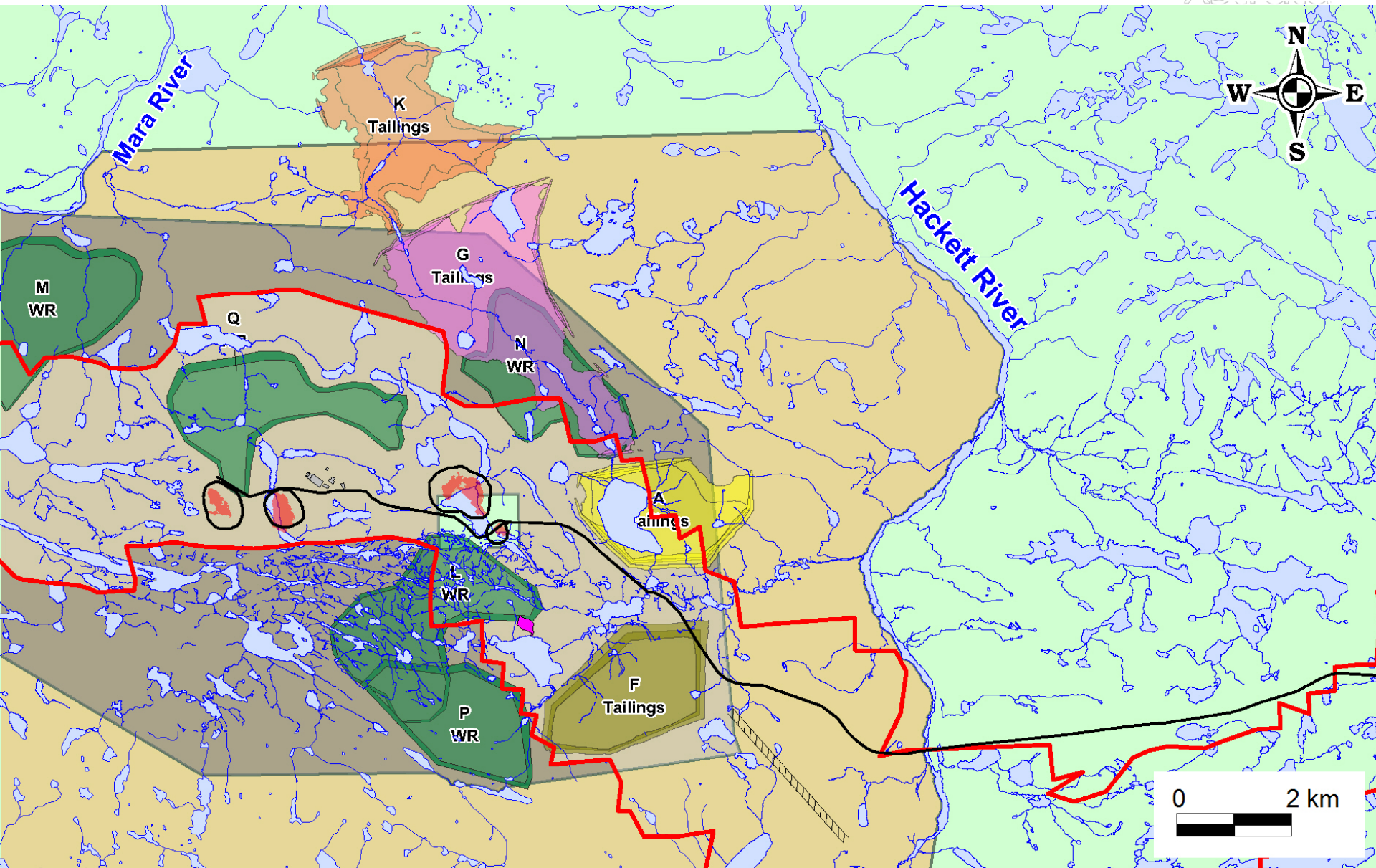


Preferred Options for Tailings and Waste Rock Storage Areas



Other Options for Tailings and Waste Rock Storage Areas



Hackett River Project: Key Facts

- **Mineral Resources:**
 - zinc, copper, lead, silver and gold
- **Project Status:** Advanced exploration and pre-feasibility ongoing
- **Estimated Resources:** 61.3MT
 - 0.9% lead, 138g/t silver, 4.2% zinc
 - 0.5% copper, 0.2 g/t gold
- **Expected mine rate:** 10,000-20,000 tonnes/day
- **Expected mine life:** Over 15 years
- **Employment:** 800 during construction and 500 when operational
- **Community Benefits:** Direct and indirect employment, training opportunities, business development opportunities, community development projects



Hackett River



Hackett River Project: Workplan 2012-2013

- Advanced Exploration Program
 - 51,000 m in 2012
 - Another 50,000m planned in in 2013
- Environmental and Socio-Economic Baseline Studies – **mostly completed**
- Engineering and pre-feasibility study - **started in Sept 2012**
- Evaluating potential for year round shipping window option - **ongoing**
- Submission of Draft Environmental Impact Statement - **scheduled for Q3 2013**
- Inuit Impact and Benefit Agreement negotiation - **2013**
- Economic evaluation of project - **Ongoing**



Hackett River Mine Life Development and Operation Timelines

Up to 2011

2012

2015

2018

2030

Exploration

**Advanced
Exploration**

Development /
Construction

Mining
/ Milling

Closure



Bathurst Inlet Port and Road Project Update



History of BIPR Environmental Review Process

Historical events of BIPR	Date
Initial Project Description submitted	May 2003
Project Final Guidelines issued by Nunavut Impact Review Board	December 2004
Submission of Draft Environmental Impact Statement	January 2008
Review suspended	November 2008
Previous Proponent does not intend to re-engage the Technical Review Process	July 2011
New proponent (Xstrata Zinc and Sabina) intends to re-engage the Technical Review Process	March 2012
Submission of <u>revised</u> Draft Environmental Impact Statement	December 2012

Bathurst Inlet Port and Road Project

Project Components

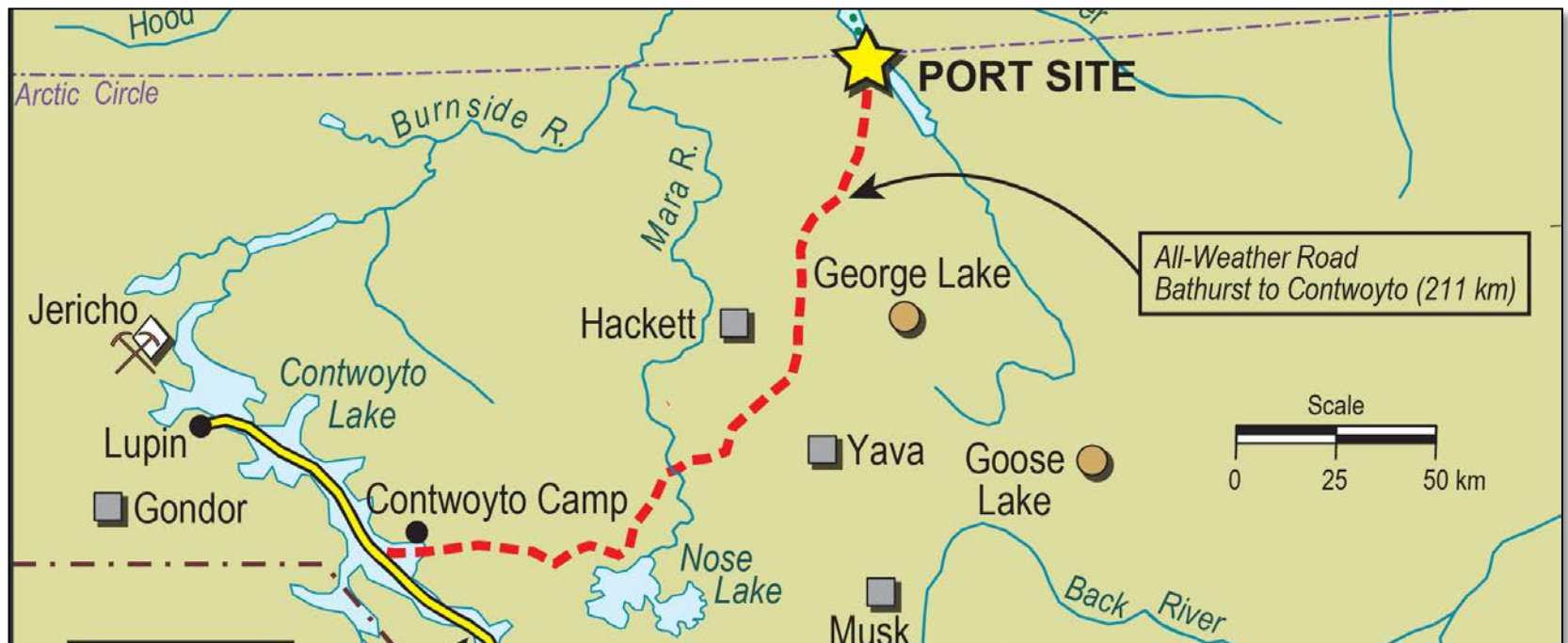


- Port and Facilities on Bathurst Inlet
- 211 km all-weather road from Bathurst Inlet to Contwoyto Lake
- Camp and Facilities at Contwoyto Lake

Bathurst Inlet Port and Road

All-Weather Road

- 9 metre wide all season road
- 211kms of road in total – 82kms on Inuit Owned land and 129kms on federal Crown Land
- 42 quarries identified for road construction
- Approximately 7,000 truck trips couple operate on the road each year (20 truck trips per day)



Bathurst Inlet Port and Road

Port Facilities

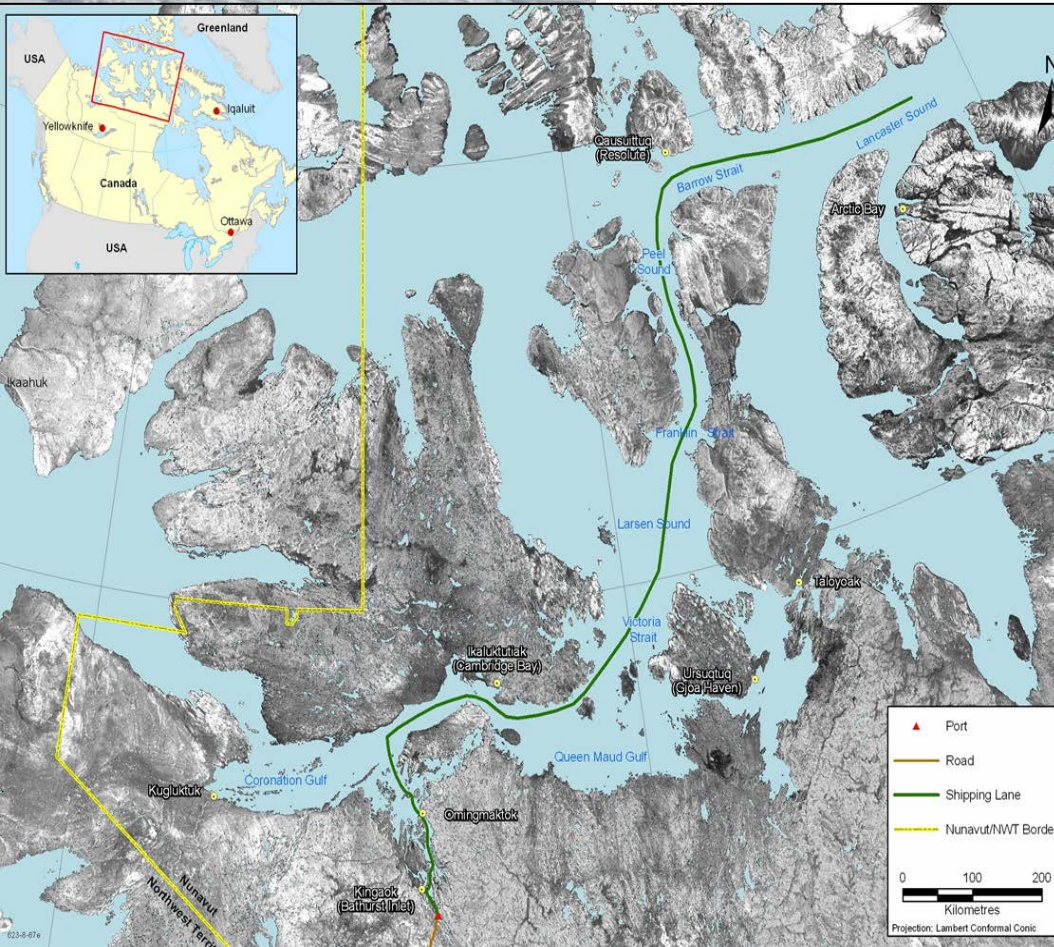
The proposed site for the port facilities is located at the south end of Bathurst Inlet.

The facilities would include the following components:

- wharf to serve vessels (up to 50,000t) delivering fuel and bulk cargo to the port
- dock to handle barges serving the Kitikmeot communities
- 200 person camp and services
- 220 million L diesel fuel tank farm
- 1,200 m airstrip and heliport
- fuel dispensing and loading station
- truck and trailer maintenance shop
- explosives storage and mixing plant
- sewage treatment plant
- cargo laydown area
- diesel power plant



Bathurst Inlet Port and Road



- Capacity of Ships of approximately 50,000 tonnes
- Capacity to handle one ship at a time
- Confirmed users include Hackett River Mine, Back River Mine
- Potential to include other users
- Joint venture ownership model
- Fuel distribution to communities
- Current ship traffic (based on confirmed users) estimated at about 1 ship per month
- Year round port capability

Break

Hackett River Environmental and Socio-Economic Baseline Studies