



AGNICO EAGLE

Parker, Peter and Fox Lakes exploration projects

Main application document and project description

Winter access

August 2016



AGNICO EAGLE

Table of Contents

1. Project summary	3
2. Proponent Information	4
3. Contacts for the exploration projects	5
4. Required Authorizations	6
4.1 Land Use	6
4.2 Land Use Planning	6
4.3 Inuit Owned Land and Crown Land	6
4.4 Environmental Screening	7
4.4.1 Public consultation	7
4.4.2 Logistic	7
4.4.3 Inuit Heritage	7
4.4.4 Caribou protection	7
4.4.5 Spill contingency Plan	8



AGNICO EAGLE

1. Project summary

Agnico Eagle Mines Limited (Agnico Eagle) acquired mineral claims located on Crown and Inuit Owned Land in the area located between 40 km and 140 km north-west of the Rankin Inlet community and between 100 km and 220 km south-east of the Baker Lake community. The exploration activities conducted in the area are for gold mineralization with diamond drilling, prospection and geophysical surveys. The exploration works started in 2016 and are authorized via many permits and licences.

Additionally to the exploration works already authorized, Agnico Eagle wants to use a winter access up to the Parker Lake, Peter Lake and Fox Lake exploration projects, from the Meliadine project and from Baker Lake. The main access will pass near the exploration projects and will join them via spur winter accesses. The accesses will be located, in the most part, on the access authorized to M&T Enterprises LTD by the NIRB decision 15RN010, by the land use permit 2015X00112 (Crown land) and the land use permit KVRW11F04.

This access will allow Agnico Eagle to transport material and equipment from Meliadine and from Baker Lake to the exploration sites and will reduce the use of helicopters during the exploration season. A limited quantity of material and equipment is planned to be transported, since these exploration projects are at the initial stage. These new authorizations and the associated conditions will be managed by Agnico Eagle

No access construction using dozer or any soil scraping is requested with this application. The winter access will be used by tracked tractors (Challenger), passing directly on the ice and snow with their loads. Snowmobiles could also use this access as needed.



AGNICO EAGLE

2. Proponent Information

The Parker Lake, Peter Lake and Fox Lake exploration properties are owned and managed by Agnico Eagle, a Canadian publicly traded mining company listed on the Toronto and New York Stock Exchanges (NYSE:AEM, TSX:AEM) with head offices in Toronto, Ontario.

Agnico Eagle is a senior Canadian gold mining company that has produced precious metals since 1957. Its nine mines are located in Canada, Finland, and Mexico, with exploration and development activities in each of these regions as well as in the United States. Agnico Eagle began exploring for minerals in Canada in 1953 and has been active in the Kivalliq Region since 1990. Agnico Eagle owns and operates the Meadowbank mine, which is located 70 km directly north of Baker Lake and approximately 50 km southeast of the Amaruq Exploration project. In addition, Agnico Eagle owns the rights to the Meliadine Gold Project, which is located approximately 25 km north of Rankin Inlet, and 80 km southwest of Chesterfield Inlet.

Agnico Eagle is a senior mining company with a proven reputation for sustainability and economic success wherever it operates. Its success is based on grassroots exploration and successful mining in politically stable countries. Agnico Eagle maintains strong relationships with the Nunavut Planning Commission (NPC), the Nunavut Impact Review Board (NIRB), Nunavut Water Board (NWB), Kivalliq Inuit Association (KIA), Indigenous and Northern Affairs Canada (INAC) and other regulators in advancing its projects. These relationships are built on thorough monitoring, reporting and presentation of information to the regulators and stakeholders, and are backed by successful and accomplished operations.



AGNICO EAGLE

3. Contacts for the exploration projects

Agnico Eagle Mines Ltd – Exploration Division:

CP 87, 765 Chemin de la mine Goldex

Val-d'Or (Qc) J9P 4N9

Ph. 819-874-5980

Environmental Coordinator:

David Frenette

CP 87, 765 Chemin de la mine Goldex

Val-d'Or (Qc) J9P 4N9

Ph: 819-874-5980

Email: david.frenette@agnicoeagle.com

Manager:

Denis Vaillancourt, Exploration Manager

CP 87, 765 Chemin de la mine Goldex

Val-d'Or (Qc) J9P 4N9

Ph: 819-874-5980

Email: denis.vaillancourt@agnicoeagle.com



4. Required Authorizations

4.1 Land Use

Agnico Eagle has sole responsibility for all the components of the proposed exploration projects and related activities such as the proposed winter access. Agnico Eagle has sole responsibility for the reclamation and closure of the projects when the exploration is completed.

4.2 Land Use Planning

All project proposals in the Keewatin Planning Region that require a licence or authorization from a land use authorizing agency must be assessed by the NPC for conformity with the Keewatin Regional Land Use Plan. The proposed winter access is entirely within the Kivalliq (Keewatin) region of Nunavut and therefore is subject to confirmation of conformity determination with the Keewatin Regional Land Use Plan. Agnico Eagle is requesting that NPC undertake a conformity determination of the proposed winter access. Agnico Eagle considers the application for land use permits to Indigenous and Northern Affairs Canada and Kivalliq Inuit Association will trigger NPC conformity determination requirements. It should be noted that Agnico Eagle received a positive NPC conformity determination for the exploration activity on the Parker, Peter and Fox lakes exploration projects on October 21st, 2015 and a NIRB screening decision on January 18, 2016.

4.3 Inuit Owned Land and Crown Land

On a total access length of nearly 405 km, including spur winter accesses toward the exploration sites, 101 km are located on Inuit Owned Land from which 33 km are on water bodies. 304 km are on Crown Land from which 251 km are on water bodies. From the 405 km total, 284 km are located on water bodies. The width of the winter access will be around 6 meters and no dozing or scraping of the soil will be done, the tracked tractors will pass directly on the ice and snow. Land and environmental management of Inuit owned land is generally governed by the provisions of the Nunavut Land Claims Agreement as the area encompassing exploration was transferred to the Kivalliq Inuit Association (KIA) when the Nunavut Land Claims Agreement came into effect. Surface administration of the land remains with KIA for the Inuit Owned Land and with INAC for the Crown Land. Agnico Eagle holds land use permits with both organizations for the exploration at Parker, Peter and Fox lakes and is now applying to obtain the authorizations to use a winter access up to these exploration areas.



AGNICO EAGLE

4.4 Environmental Screening

The information provided in this main application document has been compiled to meet the information requirements established by the different organizations. Agnico Eagle understands that a positive environmental screening decision for this application is required before any other agency can issue any permits, leases, or authorizations that would allow Agnico Eagle to commence using the winter access.

4.4.1 Public consultation

Agnico Eagle has not yet consulted the public in regard to this application, but will include the subject in the next public meetings and will answer questions and concerns.

4.4.2 Logistic

No camp is planned to be set up with the current application. Helicopters will be used to move the drills, equipment and workers during the exploration season and tracked tractors will be used during the winter to bring part of the equipment and material needed in the exploration area.

4.4.3 Inuit Heritage

To ensure Inuit heritage protection Agnico Eagle conducts annual archaeological works on various exploration sites and these investigations are permitted by the Government of Nunavut. These works include office and field investigations conducted by archaeologists to find, identify and report archaeological sites. Annual reports are submitted to the Government of Nunavut and include details of the completed investigations. These investigations help Agnico Eagle to protect archeological sites during its exploration works. For this winter access, an archaeologist will complete an investigation on the field and protection buffers will be established by the archaeologist in compliance with the regulations for any archaeological sites found.

4.4.4 Caribou protection

To limit the impact on the caribou, Agnico Eagle will apply the protection measures that are described in the Keewatin Regional Land Use Plan and also in the Wildlife Protection and Response Plan. The protection measures include avoidance of some areas during defined periods and the Wildlife Protection and Response Plan describes procedures to



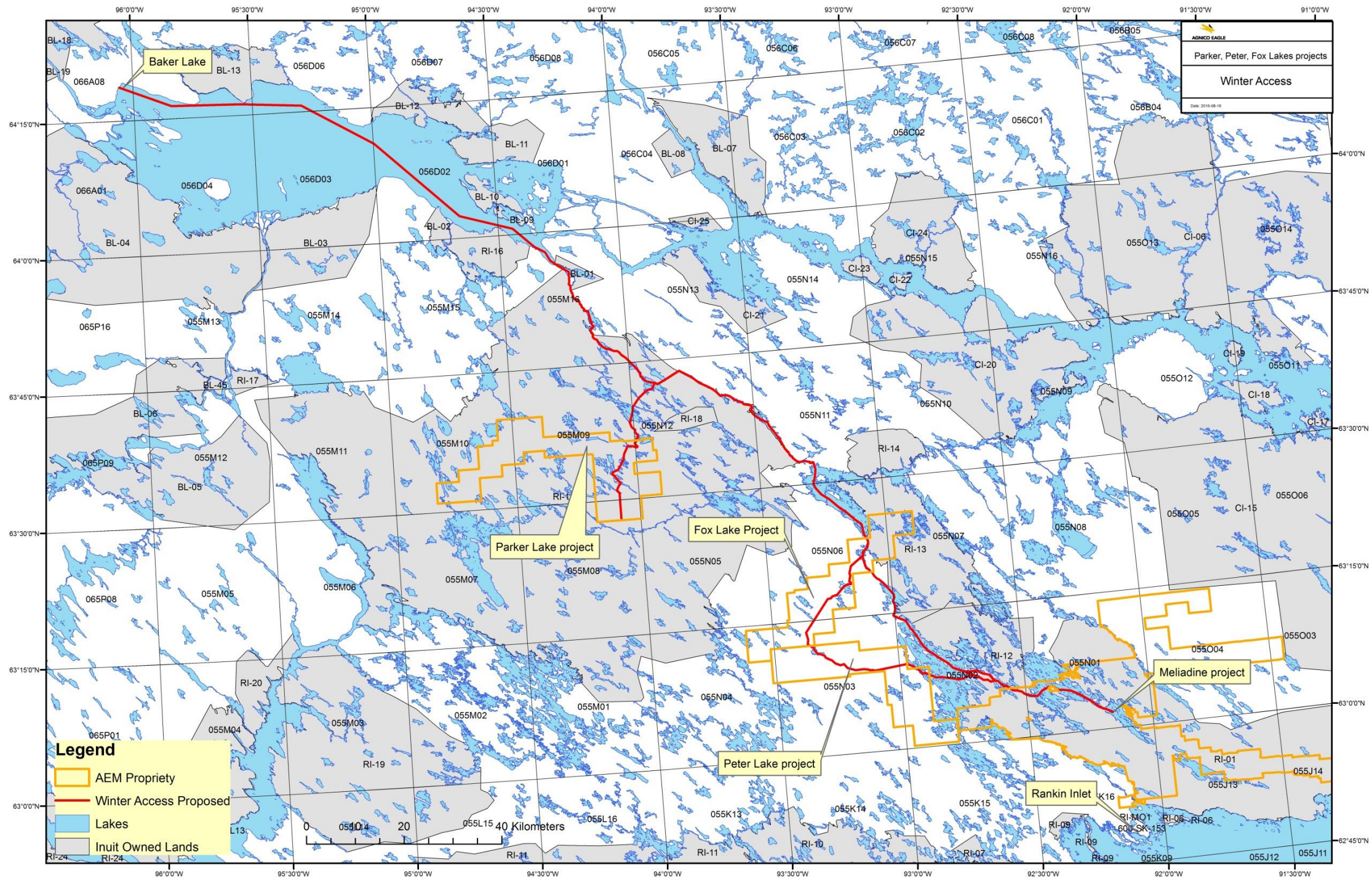
AGNICO EAGLE

apply when caribous are approaching a working area. With these measures, Agnico Eagle is confident that there will be no significant impact on the caribous.

4.4.5 Spill contingency Plan

A Spill Contingency Plan was developed for the exploration projects. It designates lines of authority and responsibility, and establishes proper reporting and detailed action plans in the event of a spill. This plan is applicable to all Agnico Eagle employees and any contractors associated with the Agnico Eagle exploration project and include details regarding the procedure associated to the winter access.

Figure 1, Winter access





AGNICO EAGLE

Figure 2, Example of tracked tractor (Challenger)

