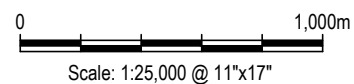


STATUS
ISSUED FOR USE



Q:\Edmonton\Engineering\E141\Projects\E14103202 - Jericho Reclamation\5.0 Drawings\ESA\2.0 Production Drawings\Site Plans.dwg [FIGURE 2] December 15, 2014 - 2:58:57 pm (BY: STIRLING, JENNIFER)



LEGEND:



- JERICO SURFACE SAMPLE LOCATION



Scale: 1:4,000 @ 11"x17"

NOTE:
BASE AIRPHOTOS PROVIDED BY
OLLERHEAD & ASSOCIATES LTD., AUGUST 2014

STATUS
ISSUED FOR USE

CLIENT



Aboriginal Affairs and
Northern Development
Canada



TETRA TECH EBA

Closure Assessment
Jericho Diamond Mine, Nunavut

PROCESSED KIMBERLITE
CONTAINMENT AREA

PROJECT NO. E14103202	DWN GDK/DBD	CKD WTH	REV 0
OFFICE EDM	DATE December 2014		

Figure 2

Q:\Edmonton\Engineering\E141\Projects\E14103202 - Jericho Reclamation\5.0 Drawings\ESA\2.0 Production Drawings\Site Plans.dwg [FIGURE 3] December 15, 2014 - 3:00:06 pm (BY: STIRLING, JENNIFER)



LEGEND:

 - JERICO SURFACE SAMPLE LOCATION

0 100m
Scale: 1:2,500 @ 11"x17"

NOTE:
BASE AIRPHOTOS PROVIDED BY
OLLERHEAD & ASSOCIATES LTD., AUGUST 2014

STATUS
ISSUED FOR USE

CLIENT



Aboriginal Affairs and
Northern Development
Canada



TETRA TECH EBA

Closure Assessment
Jericho Diamond Mine, Nunavut

MAIN SITE AND COARSE PK PILE

PROJECT NO. E14103202	DWN GDK/DBD	CKD WTH	REV 0
OFFICE EDM	DATE December 2014		

Figure 3

Q:\Edmonton\Engineering\E141\Projects\E14103202 - Jericho Reclamation\5.0 Drawings\ESA2.0 Production Drawings\Site Plans.dwg [FIGURE 3.1] December 15, 2014 - 3:01:04 pm (BY: STIRLING, JENNIFER)



NOTE:
BASE AIRPHOTOS PROVIDED BY
OLLERHEAD & ASSOCIATES LTD., AUGUST 2014

STATUS
ISSUED FOR USE

CLIENT



Aboriginal Affairs and
Northern Development
Canada



TETRA TECH EBA

Closure Assessment
Jericho Diamond Mine, Nunavut

MAIN SITE TANK FARM
AND LAYDOWN AREA

PROJECT NO.
E14103202

OFFICE
EDM

DWN
GDK/DBD

DATE
December 2014

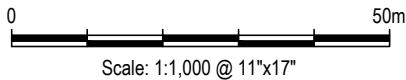
CKD
WTH

REV
0

Figure 3.1

0 50m
Scale: 1:1,000 @ 11"x17"

Q:\Edmonton\Engineering\E141\Projects\E14103202 - Jericho Reclamation\5.0 Drawings\ESA\2.0 Production Drawings\Site Plans.dwg [FIGURE 3.2] December 15, 2014 - 3:01:52 pm (BY: STIRLING, JENNIFER)



NOTE:
BASE AIRPHOTOS PROVIDED BY
OLLERHEAD & ASSOCIATES LTD., AUGUST 2014

STATUS
ISSUED FOR USE

CLIENT



Aboriginal Affairs and
Northern Development
Canada



TETRA TECH EBA

Closure Assessment
Jericho Diamond Mine, Nunavut

MAIN SITE INFRASTRUCTURE

PROJECT NO.
E14103202
OFFICE
EDM

DWN
GDK/DBD
DATE
December 2014

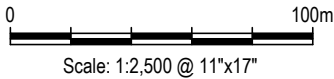
CKD
WTH
REV
0

Figure 3.2

Q:\Edmonton\Engineering\E141\Projects\E14103202 - Jericho Reclamation\5.0 Drawings\ESA\2.0 Production Drawings\Site Plans.dwg [FIGURE 4] December 15, 2014 - 3:03:22 pm (BY: STIRLING, JENNIFER)



LEGEND:
 - JERICO SURFACE SAMPLE LOCATION



NOTE:
BASE AIRPHOTOS PROVIDED BY
OLLERHEAD & ASSOCIATES LTD., AUGUST 2014

STATUS
ISSUED FOR USE

CLIENT



Aboriginal Affairs and
Northern Development
Canada



TETRA TECH EBA

Closure Assessment
Jericho Diamond Mine, Nunavut

LOW GRADE STOCKPILE

PROJECT NO. E14103202	DWN GDK.DBD	CKD WTH	REV 0
OFFICE EDM	DATE December 2014		

Figure 4

Q:\Edmonton\Engineering\E141\Projects\E14103202 - Jericho Reclamation\5.0 Drawings\ESA\2.0 Production Drawings\Site Plans.dwg [FIGURE 5] December 15, 2014 - 3:04:05 pm (BY: STIRLING, JENNIFER)



LEGEND:
[Symbol] - JERICO SURFACE SAMPLE LOCATION

0 250m
Scale: 1:5,000 @ 11"x17"

NOTE:
BASE AIRPHOTOS PROVIDED BY
OLLERHEAD & ASSOCIATES LTD., AUGUST 2014

STATUS
ISSUED FOR USE

CLIENT



Aboriginal Affairs and
Northern Development
Canada



TETRA TECH EBA

Closure Assessment
Jericho Diamond Mine, Nunavut

PIT AND WASTE ROCK PILES

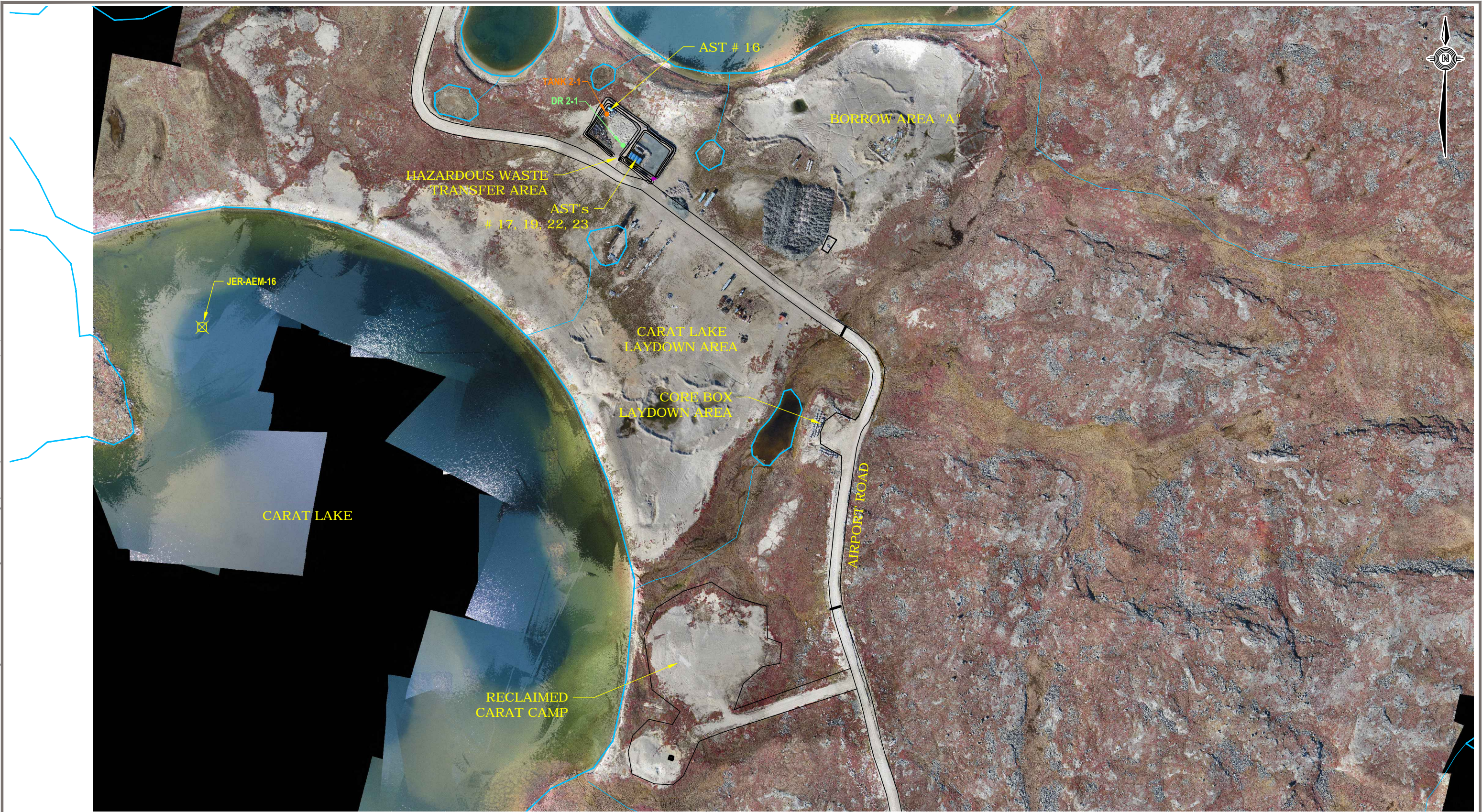
PROJECT NO.
E14103202
OFFICE
EDM




DWN
GDK/DBD
DATE
December 2014

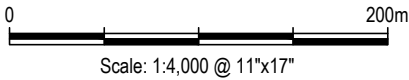
CKD
WTH
REV
0

Figure 5

Q:\Edmonton\Engineering\E141\Projects\E14103202 - Jericho Reclamation\5.0 Drawings\ESA\2.0 Production Drawings\Site Plans.dwg [FIGURE 6] December 15, 2014 - 3:04:46 pm (BY: STIRLING, JENNIFER)



- LEGEND:
-  - JERICO SURFACE SAMPLE LOCATION
 -  - AST CONTENT SAMPLE LOCATION
 -  - DRUM CONTENT SAMPLE LOCATION



NOTE:
BASE AIRPHOTOS PROVIDED BY
OLLERHEAD & ASSOCIATES LTD., AUGUST 2014

STATUS
ISSUED FOR USE

CLIENT



Aboriginal Affairs and
Northern Development
Canada



TETRA TECH EBA

Closure Assessment
Jericho Diamond Mine, Nunavut

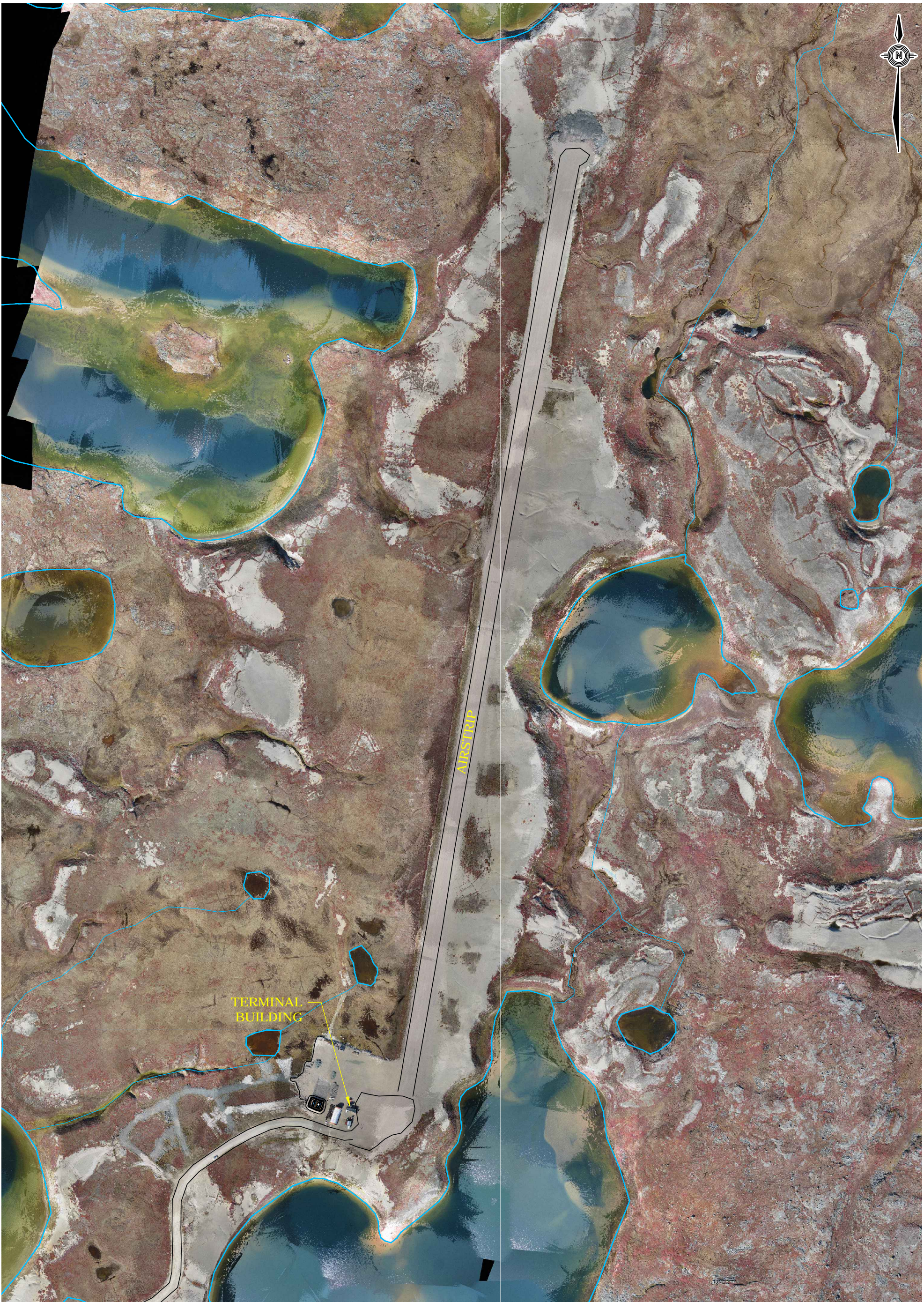
CARAT LAKE INFRASTRUCTURE

PROJECT NO.
E14103202
OFFICE
EDM

DWN
GDK/DBD
DATE
December 2014

CKD
WTH
REV
0

Figure 6



AIRSTRIP

TERMINAL
BUILDING

NOTE:
BASE AIRPHOTOS PROVIDED BY
OLLERHEAD & ASSOCIATES LTD., AUGUST 2014

CLIENT



Aboriginal Affairs and
Northern Development
Canada

Closure Assessment
Jericho Diamond Mine, Nunavut

AIRSTRIP AREA



Scale: 1:5,000 @ 11"x17"

STATUS
ISSUED FOR USE



TETRA TECH EBA

PROJECT NO.
E14103202

DWN
DBD

CKD
WTH

REV
0

OFFICE
EDM

DATE
December, 2014

Figure 7

Q:\Edmonton\Engineering\E141\Projects\E14103202 - Jericho Reclamation\5.0 Drawings\ESA\2.0 Production Drawings\Site Plans.dwg [FIGURE 7.1] December 15, 2014 - 3:06:08 pm (BY: STIRLING, JENNIFER)



LEGEND:
[Symbol] - TOTAL LEAD PAINT SAMPLE

0 50m
Scale: 1:1,000 @ 11"x17"

NOTE:
BASE AIRPHOTOS PROVIDED BY
OLLERHEAD & ASSOCIATES LTD., AUGUST 2014

STATUS
ISSUED FOR USE

CLIENT



Aboriginal Affairs and
Northern Development
Canada



TETRA TECH EBA

Closure Assessment
Jericho Diamond Mine, Nunavut

TERMINAL BUILDING AREA

PROJECT NO.
E14103202
OFFICE
EDM

DWN
GDK/DBD
DATE
December 2014

CKD
WTH

REV
0

Figure 7.1