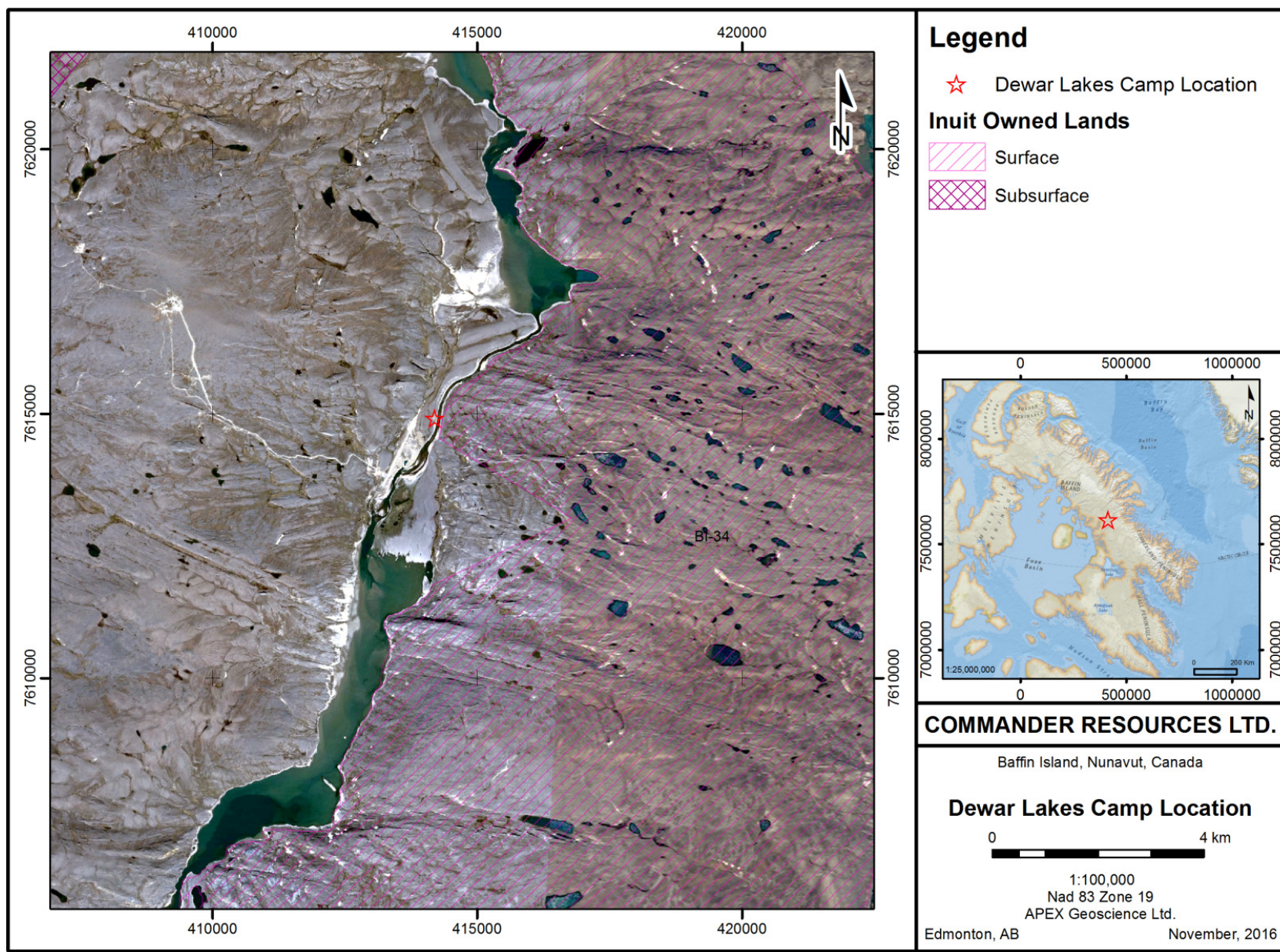


Appendix 1: Figures



Appendix 2: Backhaul Log

| Baffin Property 2017 Backhaul Log | | | | | | | | | | | | | | |
|-----------------------------------|----------------------------|---------------|---|------------|-----|-----|-----|---------|---------|------------|-------|---------|---------|---------|
| Date | Charter Company | Returning to: | Reason / Cargo | IN | | | | | | OUT | | | | |
| | | | | Passengers | Jet | P50 | Gas | Propane | Freight | Passengers | Drums | Propane | Garbage | Freight |
| 23-Jul-17 | Kenn Borek DC3 | Iqaluit | IN: Dave, Cliff, Propane, Camp Gear. OUT: Empty Drums, Megabag of Garbage | 2 | | | | 1 | Y | | 20 | | 1 | |
| 24-Jul-17 | Kenn Borek DC3 | Iqaluit | IN: Bill, Pierre, Solomonie OUT: Empty Drums, Megabag of Garbage | 3 | 10 | | | 1 | | | 20 | | 1 | |
| 24-Jul-17 | Kenn Borek DC3 | Iqaluit | IN: Jet Fuel, Diesel, jerry cans of Gasoline, Camp Gear. OUT: Empty Drums, 2 Megabags of Garbage | | 12 | 1 | | | Y | | 10 | | 2 | |
| 25-Jul-17 | Kenn Borek DC3 | Iqaluit | IN: Thomas, Jet Fuel, Gasoline. OUT: Empty Drums | 1 | 14 | | 1 | | | | 31 | | | |
| 26-Jul-17 | Kenn Borek DC3 | Iqaluit | IN: Jet Fuel, Propane. OUT: Empty Drums, Megabag of Garbage | | 12 | | | 1 | Y | | 33 | | 1 | |
| 29-Jul-17 | Kenn Borek DC3 | Iqaluit | IN: Tyler, Jet Fuel, Propane. OUT: Pete, Empty Drums, 10 Megabags of Garbage | 1 | 10 | 3 | | 1 | Y | 1 | 20 | | 10 | |
| 29-Jul-17 | Kenn Borek DC3 | Iqaluit | IN: Jet Fuel, Diesel. OUT: 10 Megabags of Garbage + Scrap Metal | | 4 | 2 | | | | | | | 10 | |
| 30-Jul-17 | Kenn Borek DC3 | Iqaluit | IN: Diesel, Propane, Freight. OUT: 20 Megabags of Garbage, Appliances, Stoves | | | 2 | | 2 | Y | | | | 20 | |
| 31-Jul-17 | Kenn Borek DC3 | Iqaluit | IN: Emily, Cam, Danielle, Fernando, Jimmy, Peter, Groceries. OUT: Andy, Berm Material | 6 | 4 | 2 | 1 | 2 | Y | 1 | | | 10 | Y |
| 9-Aug-17 | Kenn Borek King Air | Iqaluit | IN: Groceries, Geology Supplies. OUT: Andy, Berm Material | | | | | | Y | 1 | | | | Y |
| 17-Aug-17 | Air Nunavut Super King Air | Iqaluit | IN: Helicopter parts. OUT: Jeff, Peter, Emily, Danielle, Fernando, Solomonie, Rock Samples | | | | | | | 6 | | | | Y |
| 19-Aug-17 | Summit Air Dornier | Iqaluit | OUT: Bill, Pierre, Rock Samples, Soil Samples | | | | | | | 2 | | | | Y |
| 19-Aug-17 | Summit Air Dornier | Iqaluit | OUT: Generator, Soil Samples, Tents, Camp Gear, Helicopter Gear, First Aid Equipment | | | | | | | | | | | Y |
| 19-Aug-17 | Summit Air Dornier | Iqaluit | OUT: Cam, Dave, Jimmy, Thomas, ATV, Camp Gear, Garbage | | | | | | | 4 | | | Y | Y |
| 20-Aug-17 | Summit Air Dornier | Yellowknife | OUT: Dave, Camp Gear, Communications, First Aid Equipment, Helicopter Gear | | | | | | | 1 | | | | Y |

Appendix 3: Water Use Inspection Report – Justin Hack



WATER USE INSPECTION FORM

☒ Original
☐ Follow-Up Report

| | | | |
|--|-----------------------------------|--------------------------------------|---------------------------------------|
| Licensee | | Licensee Representative | |
| Commander Resources Ltd | | Robert Cameron/Tara Gunson | |
| Licence No. / Expiry | | Representative's Title | |
| 2BE-NAD1722 | | | |
| Land / Other Authorizations | | Land / Other Authorizations | |
| -- | | -- | |
| Date of Inspection | | Inspector | |
| August 14, 2017 | | Justin HACK | |
| Activities Inspected | | | |
| <input type="checkbox"/> Camp | <input type="checkbox"/> Drilling | <input type="checkbox"/> Mining | <input type="checkbox"/> Construction |
| <input type="checkbox"/> Roads/Hauling | <input type="checkbox"/> Other: | <input type="checkbox"/> Reclamation | <input type="checkbox"/> Fuel Storage |

| | | | | | | | | | | | |
|--|--|----------------|-------------|------------------------------|---------------------|--------------------|---------|--------------------|--|-----------|---------|
| Conditions: | | A - Acceptable | C - Concern | U - Unacceptable | NA – Not Applicable | NI – Not Inspected | | | | | |
| Water Use | | Condition | Comment | Site Conditions | | Condition | Comment | Haz/Mat Management | | Condition | Comment |
| Intake/Screen | | A | | Water Management Structures | | NA | | Storage | | A | |
| Flow Measure. Device | | A | | Culverts / Bridges | | NA | | Spills | | A | |
| Source: | | A | | Drainage | | A | | Spill Plan | | A | |
| Water Use: | | A | | Erosion / Sediment | | A | | | | | |
| Recirculation (y /n) | | NA | | Mitigation Measures | | NA | | Administrative | | | |
| | | | | Reclamation Activities | | NA | | Records | | A | |
| | | | | Materials Storage | | A | | Reports | | A | |
| Waste Disposal | | | | Signage | | NA | | Plans | | NI | |
| Waste Water | | A | | | | | | Notifications | | NI | |
| Solid Waste | | A | | Monitoring | | | | Other | | | |
| Hazardous Waste | | NA | | Sample Collection / Analysis | | NA | | | | | |
| | | | | | | | | | | | |
| *The number in the comments field will correspond with specific comments provided below. | | | | | | | | | | | |
| Samples taken by Inspector: | | | | Location(s): | | | | | | | |
| <input type="checkbox"/> Yes <input checked="" type="checkbox"/> No | | | | | | | | | | | |

| | | | |
|---|--|---|--|
| SECTION 1 | <input checked="" type="checkbox"/> Comments (s.1) | <input type="checkbox"/> Non-Compliance with Act or Licence (s.__) | <input type="checkbox"/> Action Required (s.__) |
| Background | | | |
| Commander Resource Ltd has been issued a Type B Water Licence (2BE-NAD1722) for the use of 2m ³ per day of water and the deposit of waste during camp operations and related activities at the Baffin Island Project located at N68°37'59", W71°06'38" (see <i>Photo 1</i>). This licence is valid until July 17, 2022. | | | |
| Inspection Report | | | |
| <u>Water Use</u> | | | |
| 1. The licensee was withdrawing water from the stream next to camp, as approved by the NWB. | | | |
| 2. The pump was in secondary containment and water quantity was being recorded. | | | |
| 3. No erosion to banks or sedimentation was occurring as observed related to this use of water. | | | |
| 4. There was a screen attached to the pump hose (see <i>Photo 2</i>). | | | |
| <u>Waste Disposal</u> | | | |
| 5. Greywater was being directed to a sump located greater than 31m from the stream (see <i>Photo 3</i>). | | | |
| 6. Solid waste was not being stored in a way in which it would likely effect inland waters. | | | |
| 7. Sewage wastes were being contained within Pacto toilets. | | | |
| <u>Other notes:</u> | | | |
| 8. All fuel on site was contained within secondary containment or greater than 31m from the nearby river. | | | |
| 9. The incinerator was active at the time of the inspection and is located greater than 31m from the river. | | | |
| 10. No spills were noted. | | | |
| Click here to enter text. | | | |
| SECTION 2 | <input type="checkbox"/> Comments (s._2_) | <input type="checkbox"/> Non-Compliance with Act or Licence, (s.__) | <input checked="" type="checkbox"/> Action Required (s.12) |
| There were no concerns noted related to this Licensee's use of water or deposit of waste | | | |

| |
|------------------|
| Inspector's Name |
| Justin Hack |
| Signature |
| |





Aboriginal Affairs and
Northern Development Canada

Affaires autochtones et
Développement du Nord Canada

Date

September 26, 2017



Photo 1: Overview of camp.



Photo 2: Water pump with intake screen in blue.

Canada

 Aboriginal Affairs and Northern Development Canada Affaires autochtones et Développement du Nord Canada



Photo 3: Sump where greywater is discharged.

Appendix 4: Seasonal Camp Shutdown Inspection Record

| Area | Complete | Comment | Inspected |
|--|----------|---|-------------|
| <u>General Camp area</u> | | | |
| General camp area inspected for any waste, spills or contamination | ✓ | There were no spills in 2017 | David Scott |
| General camp area secure for winter | ✓ | | David Scott |
| All combustible and non-recyclable waste incinerated | ✓ | | David Scott |
| All non-combustible waste prepared for removal | ✓ | | David Scott |
| Any unnecessary or excessive vegetation damage | ✓ | | David Scott |
| <u>Buildings and Content</u> | | | |
| All tents and building complexes secured for the winter and cleared of any debris | ✓ | Canvas tents set up in 2017 were removed from site for the winter. Remaining wooden structures were secured for the winter. | David Scott |
| All office equipment; furniture; kitchen equipment; recreational equipment and other mobile heavy equipment will be winterized and secured | ✓ | Office equipment secured in the tool shed. Plywood furniture neatly stacked on remaining tent floors. | David Scott |
| Any equipment not capable of withstanding the harsh winter conditions will be removed | ✓ | Kitchen equipment, propane stove, propane dryer and ATV were to Iqaluit for the winter. | David Scott |
| Area inspected for petroleum spills or contamination | ✓ | There were no spills in 2017 | David Scott |
| <u>Water Supply System</u> | | | |
| Water pumps, filtering systems, water lines and any other equipment associated with the water supply system drained and winterized | ✓ | Water pump and supply hose sent to Iqaluit for the winter | David Scott |
| Water pump shed will be secured | ✓ | | David Scott |
| Area inspected for petroleum spills or contamination | ✓ | There were no spills in 2017 | David Scott |
| <u>Sewage System</u> | | | |
| Greywater system drained | ✓ | | David Scott |
| Pacto units cleaned | ✓ | | David Scott |
| Pacto shed cleaned and winterized | ✓ | | David Scott |
| <u>Waste Incinerator</u> | | | |
| Incinerator fuel supply shut off using all valves | ✓ | | David Scott |
| Incinerator fuel in appropriate and functional secondary containment | ✓ | | David Scott |
| Area inspected for petroleum spills or contamination | ✓ | There were no spills in 2017 | David Scott |
| Incinerator area cleared of any debris | ✓ | | David Scott |
| <u>Electrical System</u> | | | |
| Generator shack and surrounding area inspected for signs of spills and remaining wastes such as oil and grease | ✓ | There were no spills in 2017 | David Scott |
| Generator drained of fuel and removed from camp | ✓ | Generator returned to Discovery Mining Services in Yellowknife for the winter | David Scott |
| Generator shack secured for winter | ✓ | | David Scott |
| All electrical wire, plugs and sockets which remain in their installed location are safe and secure | ✓ | Electrical panel with 100' cord was transported to Iqaluit for storage over the winter | David Scott |
| All electrical cords temporarily connected to a building or machinery unplugged, rolled and stored | ✓ | | David Scott |
| <u>Camp Heating Systems</u> | | | |
| Each 205L fuel barrel attached to respective tent or building secured and within secondary containment | ✓ | | David Scott |
| All remaining fuel lines will be burned out | ✓ | | David Scott |
| Empty propane cylinders ready for transport for refilling or recycling | ✓ | | David Scott |
| <u>Petroleum Products and Storage Facilities</u> | | | |
| All fuel stored in appropriate and functional secondary containment | ✓ | See section 5.2 for details. Wobble pumps moved to Iqaluit for storage over the winter. | David Scott |
| All fuel storage areas GPS location recorded | ✓ | | David Scott |
| All fuel labelled properly | ✓ | | David Scott |
| Area inspected for spills or contamination | ✓ | There were no spills in 2017 | David Scott |
| Fuel storage area cleared of any debris | ✓ | | David Scott |
| <u>Chemicals and Hazardous Waste</u> | | | |
| All chemicals stored in appropriate building or within functional secondary containment | ✓ | | David Scott |
| All household cleaners properly secured and stored for winter | ✓ | | David Scott |
| All remaining waste fuel, oil and grease stored in approved and labelled containers for reuse during summer operations | ✓ | | David Scott |
| All hazardous waste that cannot be reused properly stored, sealed, labelled and prepared for removal | ✓ | | David Scott |

| Area | Complete | Comment | Inspected |
|---|----------|---|-------------------------------|
| Area inspected for spills or contamination | ✓ | There were no spills in 2017 | David Scott |
| Area cleared of any debris | ✓ | | David Scott |
| Spill Response Kits | | | |
| Spill kits not needed over winter relocated to secured building | ✓ | | David Scott |
| Emergency Response | ✓ | | David Scott |
| Fire extinguishers in working order and secure in all necessary locations | ✓ | Upon camp closure, all fire extinguishers were prepared for removal. | David Scott |
| Smoke/CO2 detectors in working order and secure in all necessary locations | ✓ | Smoke/CO2 detectors were moved to the metal silo for storage over the winter. | David Scott |
| Fire extinguishers moved to secure building for the winter | ✓ | Fire extinguishers moved to Iqaluit for the winter | David Scott |
| Transportation | | | |
| Transport areas including helipads and ATV trails inspected for spills or contamination | ✓ | There were no spills in 2017 | David Scott |
| Vehicles prepared for transport offsite for the winter | ✓ | The ATV and trailer were transported off site for the winter | David Scott |
| Documentation | | | |
| Notification of all required authorities of seasonal shut down | ✓ | Sent September 15, 2017 to INAC and NWB by APEX on behalf of Commander | Tara Gunson |
| Inspections recorded | ✓ | INAC/NWB Inspection on August 14, 2017. Daily visual inspections were conducted by David Scott. | David Scott |
| Photos taken of camp and fuel cache | ✓ | Closure photos included in Section 2.2 | Cam Barker, Patrick Robert |
| GPS coordinates recorded for camp, fuel storage area and wildlife sightings | ✓ | | Emily McNie |
| Descriptions recorded for all wildlife sightings | ✓ | Wildlife Observational Log included in Section 4 | Emily McNie |
| Year-end inventory of all equipment and buildings left on site | ✓ | Inventory included in Appendix 4 | David Scott |

Appendix 5: Camp Inventory Record

Camp Gear

| Item | Quantity |
|--------------------------------|-----------------|
| showers | 5 |
| laundry sinks | 2 |
| pex | 40' |
| 1 1/2" abs | 40' |
| 2" abs | 40' |
| grease trap | 1 |
| 250 gallon water tanks | 2 |
| pacto | 1 |
| pacto bag refills | 2 |
| coffee maker (small) | 1 |
| kettle | 1 |
| fridge | 1 |
| washer | 1 |
| freezer | 1 |
| extension cords | 15 |
| fold out chairs | 10 |
| fold out tables | 2 |
| screws/nails | small amount |
| lightbulbs | 20 |
| 6" chimneys | 9+ |
| drip pans | 20 |
| water supply hose | 3 |
| blue collapsible hose | 3 |
| core splitter | 1 |
| core saw | 1 |
| mega bags | 80 |
| electrical cable-various sizes | various lengths |
| berm | 1 |
| oil cloth | 1/2 roll |
| floors | 10 |
| bathroom sinks | 3 |
| kitchen sinks | 3 |
| blue tarps | 4 |
| long handle shovels | 3 |
| short handle shovels | 5 |
| geotools | 8+ |
| rice bags | 2 rolls |

Office Supplies

| Item | Quantity |
|---|-----------|
| Scribe | 1 |
| Chap Stick | 6 |
| Rite in the Rain - small | 1 |
| Rite in the Rain - large | 1 |
| Flagging Tape | 23 |
| Sun Screen | 3 |
| Bug Spray | 11 |
| Bug Vests | 12 |
| Zip Ties | 5 |
| Swing Magnet | 2 |
| Paper | 1.5 packs |
| Avery Shipping Labels | 20 |
| Sticky Notes | 11 |
| Yellow Highlighter | 6 |
| Stapler | 2 |
| Pencils | 17 |
| Uni-Ball Pens (Black) | 13 |
| Highland Clear Tape | 1 |
| Small Binder Clip | 2 |
| Medium Binder Clip | 1 |
| Heavy Duty Staples | 1 |
| Standard Staples | 2 boxes |
| Bick Pens (Blue) | 8 |
| Duct Tape | 1 |
| Push Pins | 1 box |
| Black Bound Notebook | 3 |
| 12W Wall Charger | 1 |
| Box Cutter | 2 |
| Scissors | 2 |
| Extension Cord | 2 |
| Soil Bags | 1400 |
| Poly Bags | 250 |
| Canon PIXMA MX492 Printer | 1 |
| HP Color Laser Jet PRO MFP M177fw Printer | 1 |

Safety Gear

| | |
|-----------------|-----|
| Safety Glasses | 7 |
| Safety Helmet | 2 |
| Safety Vest | 3 |
| Yellow Ear Buds | 200 |
| Gloves | 7 |

Appendix 6: Incinerator Log

| Date | Kitchen (Garbage Bags) | Garbage (Garbage Bags) | Pacto (Garbage Bags) | Employee |
|--------------|---------------------------------------|-----------------------------------|---------------------------------|-----------------|
| 31-Jul-17 | 2 | 1 | 1 | DS |
| 01-Aug-17 | 4 | | 1 | DS |
| 02-Aug-17 | 2 | 2 | | DS |
| 03-Aug-17 | 6 | | | DS |
| 04-Aug-17 | 10 | | | DS |
| 05-Aug-17 | 8 | | 2 | DS |
| 06-Aug-17 | 6 | | | DS |
| 07-Aug-17 | 4 | | | DS |
| 08-Aug-17 | 6 | 1 | 1 | DS |
| 09-Aug-17 | 6 | | | DS |
| 10-Aug-17 | 6 | 1 | 1 | DS |
| 11-Aug-17 | 7 | 1 | | DS |
| 12-Aug-17 | 9 | 2 | 2 | DS |
| 13-Aug-17 | 5 | 1 | | DS |
| 14-Aug-17 | 8 | 1 | | DS |
| 15-Aug-17 | 8 | | 2 | DS |
| 16-Aug-17 | 8 | 1 | | DS |
| 17-Aug-17 | 9 | 2 | 2 | DS |
| July | 2 | 1 | 1 | |
| August | 112 | 12 | 11 | |
| TOTAL | 114 | 13 | 12 | |

Appendix 7: Nunatta Environmental Services Waste Disposal Summary

Nunatta Environmental Services Inc.



P.O Box 267

Iqaluit, NU, X0A 0H0

(867) 979-1488

nunatta@northwestel.net

Garbage Sorting and Waste Disposal Activities

Dewar Lakes Camp Trash

Iqaluit, Nunavut

FINAL REPORT

Prepared for:

Kivalliq Energy Corp.

1020-800 West Pender Corp Street

Vancouver, BC, Canada

V6C-2V6

Prepared by:

Nunatta Environmental Services Inc.

P.O Box 267

Iqaluit, Nunavut, X0A 0H0

Nunatta Environmental Services

2017

Garbage Sorting and Disposal from Dewar Lakes Exploration Camp

November 29, 2017

Nunatta was contacted by Martin Barbe to receive drums for crushing at the landfarm in Iqaluit. He told me the materials were from the Dewar Lakes camp site and that Andrew Berry from Kivalliq Energy Corp. would be calling with instructions for disposal and invoicing. Andrew Berry called from the cleanup location and introduced himself and who he worked for then gave me the address and phone numbers for invoicing.

We received 100 empty drums over the period of a few weeks, some of which contained small amounts of hydrocarbons. This was sucked out prior to crushing of the drums. Eleven drums arrived with noticeable amount of liquid and a few were full. When we consolidated these and added what was removed from the empty drums it came to 7 drums of product. This included used oil, old fuel, fuel and water mix. This was banded to skids and shipped south to be recycled and or disposed in an environmentally friendly manner.

The receiving recycler we use is
Global Recouperation,
1071 Principale, St-Pierre Baptiste,
QC G0P-1K0,
Phone 418-453-2424 or
www.globalrecuperation.com

Wood, cardboard and metals were all sorted and then taken to the city of Iqaluit landfill where each component is offloaded into its own area to be dealt with independently from the household waste. Metals are crushed and shipped out at the end of the shipping season to be recycled. Wood is shredded and used to cover the landfill garbage. Cardboard is baled and shipped out when enough has been gathered to warrant removing it. Burning as in the past has been stopped in Iqaluit. In all six trip to the dump were made by Nunatta staff.

6 X 100 lb Propane tanks have been stored in Nunatta Landfarm until next sealift when they will be sent south for reuse. Shipping company did not remove all waste this fall due to a large amount of scrap metal being shipped out.

The bulk bags were cleaned out and if in good shape Nunatta Environmental Services folded them and put away for future use.

James H. Wilson GM/VP
Nunatta Environmental Services Inc.

Appendix 8: Water Use Log

| Date | Gallons/day | Cubic metres/day | Employee |
|----------------------|--------------------|-------------------------|-----------------|
| 28-Jul-17 | 250 | 0.95 | DS |
| 29-Jul-17 | 0 | 0.00 | |
| 30-Jul-17 | 0 | 0.00 | |
| 31-Jul-17 | 250 | 0.95 | DS |
| 01-Aug-17 | 125 | 0.47 | DS |
| 02-Aug-17 | 0 | 0.00 | |
| 03-Aug-17 | 250 | 0.95 | DS |
| 04-Aug-17 | 200 | 0.76 | DS |
| 05-Aug-17 | 200 | 0.76 | DS |
| 06-Aug-17 | 150 | 0.57 | DS |
| 07-Aug-17 | 200 | 0.76 | DS |
| 08-Aug-17 | 200 | 0.76 | DS |
| 09-Aug-17 | 250 | 0.95 | DS |
| 10-Aug-17 | 200 | 0.76 | DS |
| 11-Aug-17 | 200 | 0.76 | DS |
| 12-Aug-17 | 200 | 0.76 | DS |
| 13-Aug-17 | 200 | 0.76 | DS |
| 14-Aug-17 | 200 | 0.76 | DS |
| 15-Aug-17 | 200 | 0.76 | DS |
| 16-Aug-17 | 200 | 0.76 | DS |
| 17-Aug-17 | 250 | 0.95 | DS |
| 18-Aug-17 | 0 | 0.00 | |
| 19-Aug-17 | 0 | 0.00 | |
| TOTAL | 3725 | 14.10 | |
| Daily Average | 162 | 0.61 | |