



NUNAVUT IMPACT REVIEW BOARD

NUNAVUT AVIKTULIKYIIT KATIMAYIIT

**Scoping and Environmental Impact Statement Guidelines
for the NIRB's Review of the Grays Bay Road and Port
Project**

**Hivunikhaliurutikhanut Avatiliqinirnut Aktuqtauhimaningit
Kiuviniiit Maliktakhainit haffumani NIRB'ip Qimilrurningit
haffumani Agiaqmi Apqutaa unalu Tulakvinga Havaangit**

March 2018

Outline

- What is the NIRB and what do we do?
- NIRB's Environmental Assessment Process
- Grays Bay Road and Port Project
- Scoping List for the Grays Bay Project
- EIS Guidelines



Nunavut Impact Review Board



Nunavut Aviktuikyit Katimayit

Ihumaliurut

- Hunaukmat NIRB qanuriliuqqitalu?
- NIRB-kut Avatilirininnganut Ihivriurniqmut Havaanga
- Agiaqmi Apqutaa unalu Tulakvinga Havaangit
- Hivunikhautikhangit Titiqqangit haffumani Agiaqmi Havaangit
- Avatiliqinirnut Aktuqtauhimangingit Kiuviniiit (EIS) Maliktakhainit

Huuqtauq NIRB-kut pulaaliqqat nunagiyarnut?

- **Tuniluni:** Kitikmeot Inuit Katimayiingit/Nunavut Kavamanga Agiaqmi Apqutaa unalu Tulakvinga Havaangit
- **Naunaipkarlugu:** NIRB'ip avatingit ihivriurningit (Qimilrurningit) haffumani Agiaqmi Havaangit
- **Apirilugu:** Qanuqtut ihumagiviuk Havauhikhaq – ayurhautipkainiaqtaatit?
- **Naallaglutilit:** apiqquutivit, kiuviniiit, ihumaaluutivillu
- **Akturlugu:** aturlugit nalunaitkuhingit avvautihimayatit



Why is the NIRB visiting your community?

- **Present:** KitlA/GN's Grays Bay Road and Port Project
- **Explain:** NIRB's environmental assessment (Review) of the Grays Bay Project
- **Ask:** How do you feel about the Project – will it affect you?
- **Listen:** your questions, comments, and concerns
- **Affect:** using the information you share



What is the Nunavut Impact Review Board?

An institution of public government responsible for environmental impact assessment of proposed projects in Nunavut

Hunauyuq hamna Nunavut Aviktulikyit Katimayit?

Timiuyut haffumani kitunuliqaak kavamanut amirigiaqaqtangit avatinut aktuqtaunikkut ihivriurningit uumani tukhiutauhimayunut havaanut Nunavut iluani



Nunavut Impact Review Board



Nunavut Aviktulikyit Katimayit

The NIRB's Mission

- To protect and promote the well being of the Environment and Nunavummiut through the Impact Assessment process

NIRB-kut Tikinnahuaqtangit

- Hapumminahuarlugit ikayurnahuarlugillu inuuttiarnikkut haffumani avatinut Nunavunmiunut aktuqtaunnirumik ihivriurnigut piliriangit



Nunavut Impact Review Board



Nunavut Aviktulikyit Katimayit

Who is the NIRB?

- 8 board members,
1 Chairperson
 - Nominated by government
and Inuit Organizations
- 22 staff members

Kitkuukmata NIRB?

- 8nik katimayiilgit, atauhiqmik Ikhivautalikmik
 - Niruaqtuyuq kavamatkunnit Inuit Timiqutigiyauyunillu
- 22 nit havaktigaqtut



What does the NIRB do?

Qanuriliuqtut NIRB-kut?

FULL REVIEW ITEMS	PROPOSANT	NAB	MINES	COMMUNITY
Phase 1: Screening & Guideline Creation				
1. Project Scoping				
- Hold community scoping sessions				
- Develop EIS Guidelines				
- EIS Guidelines Development Workshop (optional)				
2. Issue EIS Outcomes				
Phase 2: Draft Environmental Impact Statement (EIS)				
3. Prepare and Submit Draft EIS				
4. Review Draft EIS for Conformity with Guidelines				
5. Technical review of Draft EIS				
- Preparation of Information Requests				
- Prepare and submit responses to info Requests				
- Prepare and submit technical review comments				
- Hold community information sessions				
6. Technical meeting				
7. Pre-Hearing Conference				
Phase 3: Final Environmental Impact Statement (EIS)				
8. Submission of Final EIS				
9. Comprehensive review of Final EIS				
10. Technical review of Final EIS				
11. Final Hearing				
12. Issue Final report to Minister				

Application for project
Uuktuutikhaq
havauhikhamut



Identify impacts
Iltarilugit ayurhautinganik



Decide if project should
proceed or not

Ihumaliuqlugu taimaa
havauhikhaq piyukhaq
pihuiqluniluuniit



Develop conditions to minimize
negative impacts

Piliurluni qanuriliurutinik
ikikliyuumiutigiami nakuungittut
ayurhautipkaiyut

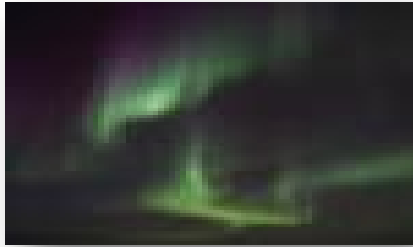


Monitor effects of project

Munarilugit
qanuriliurutingit
havauhikhamut

Changes to the environment

Aadlangurniq avatinganut



Air quality
Aniqhaaqtaptiknik
qanirutaakhaa



Marine life
Tariuqmi uumayut



Birds
Tingmiangit



Wildlife
Huraatigut



Ground Stability
Nunangga naptuningga



Water
Imaktigut



Freshwater life
Imaqmi uumayut



Vegetation
Nunami nauhimayut

Changes to communities Aadlangurniq nunallaanut



Land and Resource Use
Nunanganik Ikayuutikhamullu
Aturningga



Food security
Niquillaiqtailiniq



Livelihood
Inuuhingit



Community infrastructure
and public services
Nunallaanut aulapkaidjutikhangit
inungnullu ikayuutikhat



Employment
Havaakhat

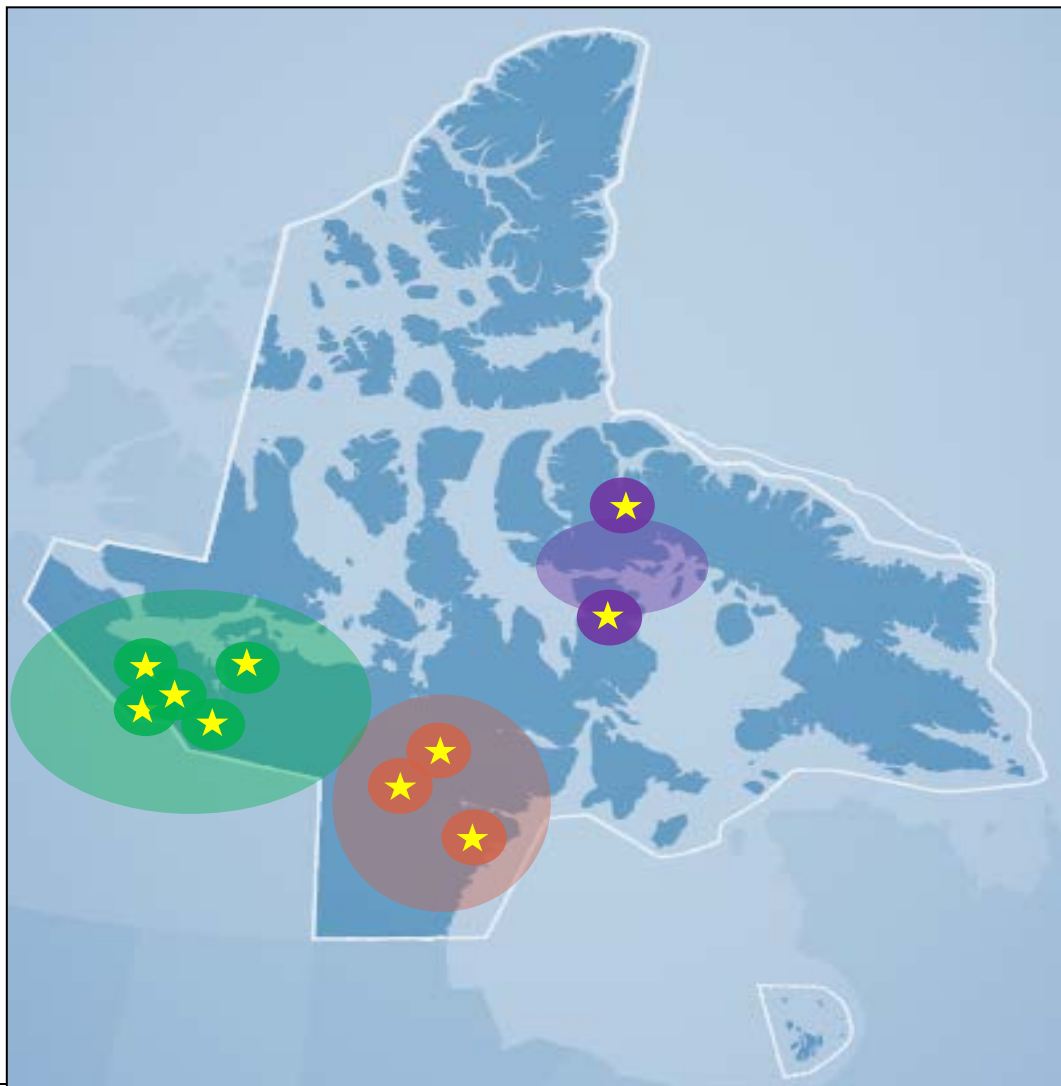


Archaeology
Inituqnirliriit



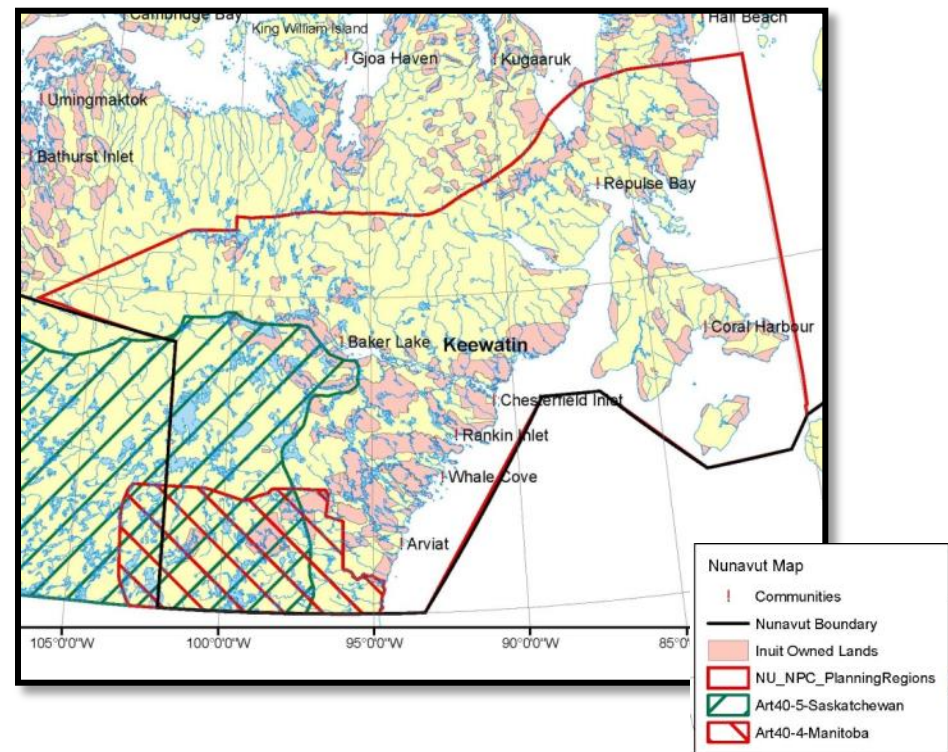
Education and
training
Ilihainiq ayuirhainiqlu

Cumulative Impacts Angikliyuumiliqtut Ayurhautingit



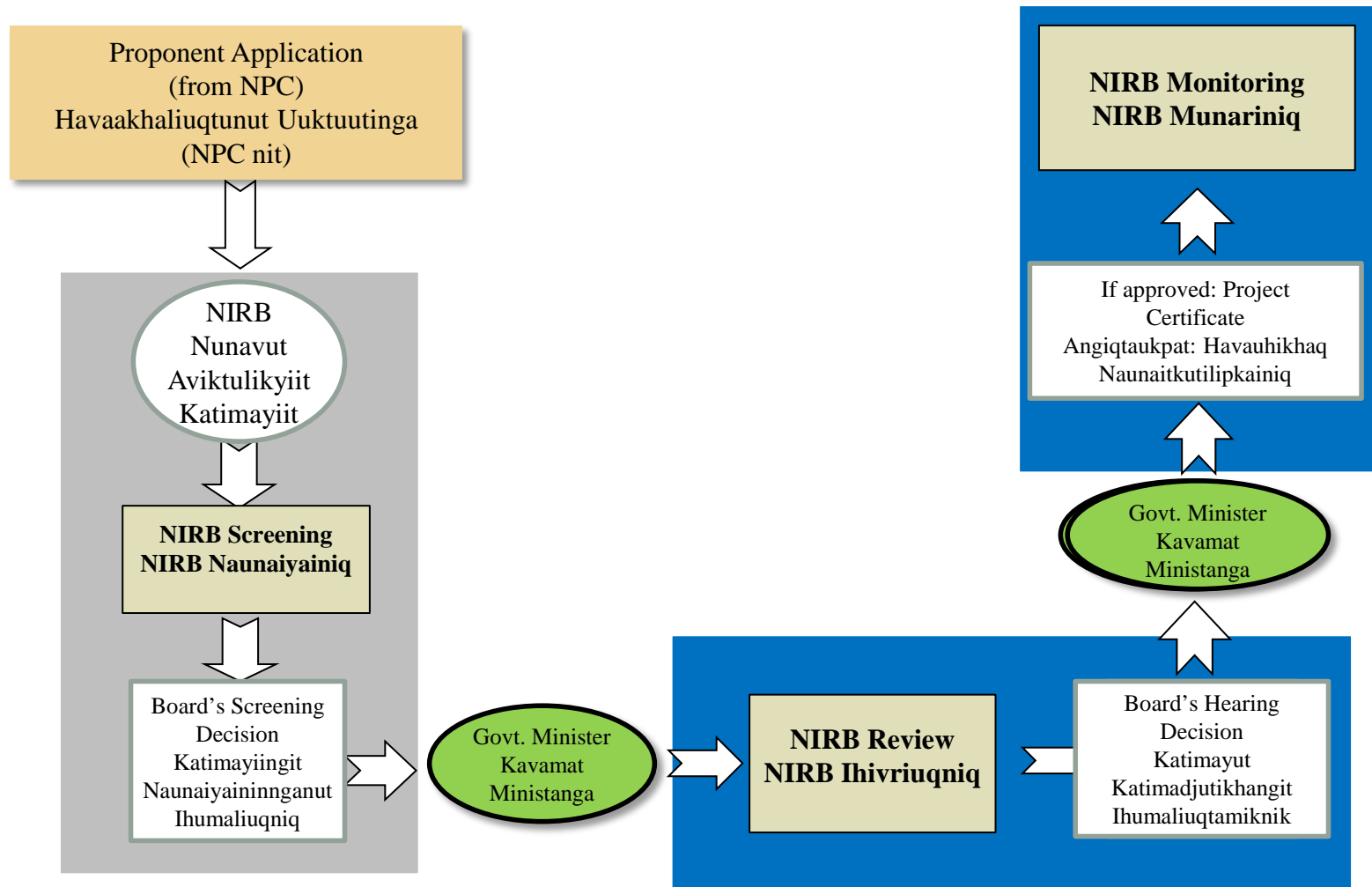
Transboundary Impacts

Ingilganikmun Nungumaah Ihuikgutait



The NIRB's Impact Assessment Process

Tamna NIRB-kut Pilaqutinga Naunaiyaininnga Havaaanga

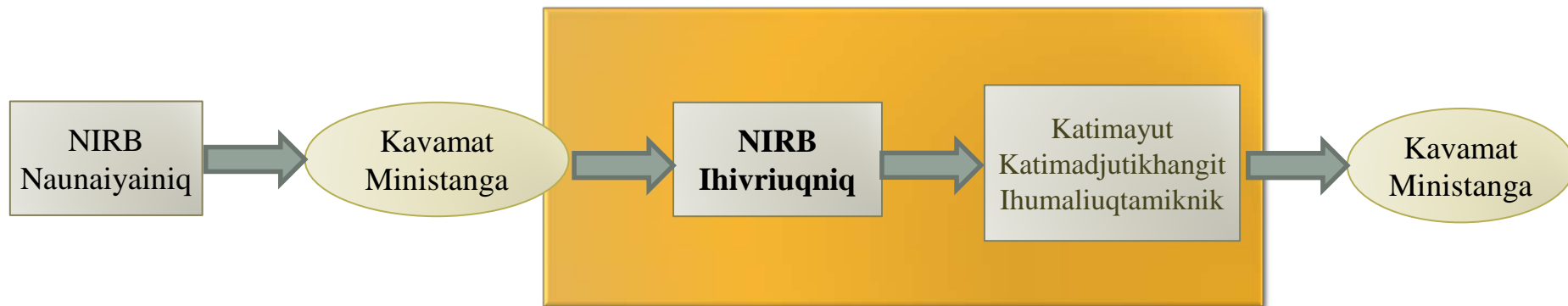


When does the NIRB do a Review?



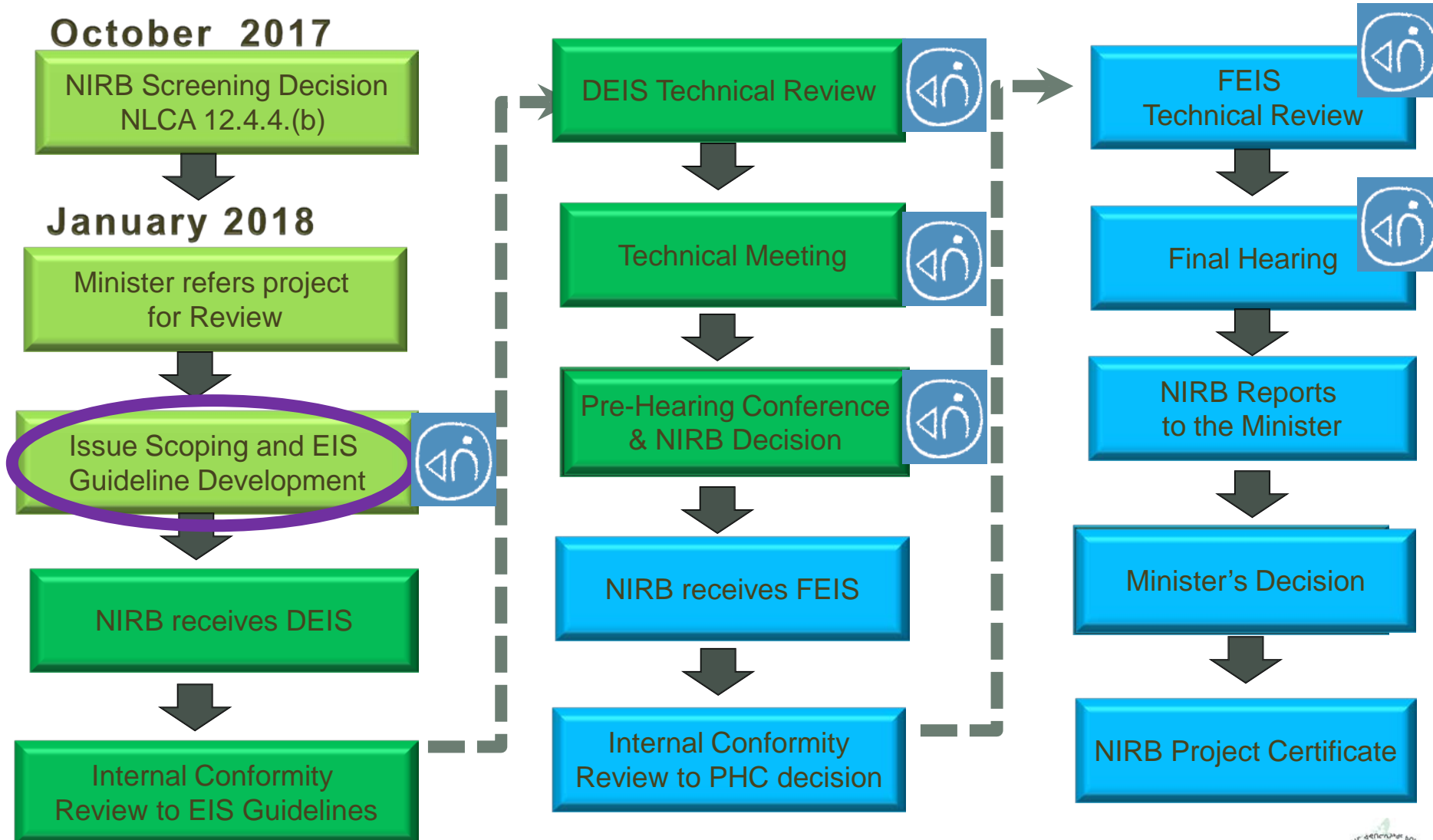
- Significant impact on the environment, wildlife and Inuit harvesting
- Socio-economic effects on northerners
- Significant public concern
- Involves new technology – unknown effects

Qakugu NIRB-kut Ihivriuqniaqqat?



- Aktuqhimalluaqtangit uumani avatingit, anngutikhanut Inuit angunahuarvingillu
- Inuliqiniqmut-manighiurniqmut mihingnautit Ukiuqtaqtumiunut
- Ihumaagiyaulluaqtuq inungnit
- Ilaliutiyuq nutaanik ayuitaminik – nalunaqtut qanuriliurutingit

Review Process Overview



Ihivriuqniq Havaanga Naittuq

October 2017

NIRB
Naunaiyaininnganut Ihumaliuqniq
Nunavunmi Nunataarutit Angirutinginnit
(NLCA) 12.4.4.(b)

January 2018

Minista pitquyauyuq havauhikhaq
Ihivriutakhamut

Ihumaalutigiyamiknik
Hivunikhautikhat
Naunaiyainiq unalu
EIS Maliktahangit Pivalliani

NIRB piyait Titirainnaqhimayut
Avatiliqinirnut Aktuqtauhiangani
Kiuviniit (DEIS)

Iluaniit Angirutauyut Ihivriuqniq
EIS Maliktahanginnut

Titirainnaqhimayut Avatiliqinirnut
Aktuqtauhiangani Kiuviniit (DEIS)
Qauyiharnikkut Qimilruqtangit

Nalluyaungginitunik
Katimadjutinik

Tuhaqtipkaitinnagit Katimaniq
unalu
NIRB Ihumaliuqtaminik

NIRB piyait Iniqpiaqhimayut
Avatiliqinirnut Aktuqtauhiangani
Kiuviniit (FEIS)

Iluaniit Angirutauyut Ihivriuqniq
Tuhaqtipkaitinnagit Katimaniq
ihumaliuqtamiknik

Iniqpiaqhimayut Avatiliqinirnut
Aktuqtauhiangani Kiuviniit (FEIS)
Qauyiharnikkut Qimilruqtangit

Iniqpiaqtumik
Katimadjutikhaq

NIRB Uqaqtut Ministamut

Ministaup Ihumaliuqtaminik

NIRB Havauhikhaq
Naunaitkutlipkainiq

How can you learn more about NIRB's assessments?

• Public Registry

- Search for project or document
- Register to receive notifications

• Calendar

- Active projects and deadlines

SEARCH the PUBLIC REGISTRY

Keyword Search

☒ Search Projects ☐ Search Documents

Advanced Search

Project Location

☐ Transboundary ☐ Kikmeot
☐ Kivalliq ☐ North Baffin

Project Type

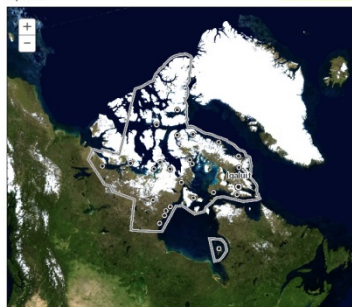
☐ Access ☐ Access Road
☐ All-Weather Road / Access Trail ☐ Camp
☐ Coastal Infrastructure ☐ Defence
☐ Fuel ☐ Ice Drilling
☐ Infrastructure ☐ Lease
☐ Marine Based Activities ☐ Mine Development
☐ Mineral Exploration ☐ Municipal and Industrial Development
☐ National Park ☐ Oil and Natural Gas Development
☐ Oil and Natural Gas Exploration ☐ Other
☐ Pits and Quarries ☐ Power Plant
☐ Remediation ☐ Scientific Research
☐ Site Cleanup/Remediation ☐ Space
☐ Tourism ☐ Water
☐ Winter Road / Winter Trail

Assessment Status

☐ Active Screening ☐ Active Review
☐ Active Monitoring ☐ Completed Screening
☐ Completed Review ☐ Completed Monitoring
☐ Exempt from Screening ☐ Inactive
☐ Cancelled Screening ☐ Active S.E.A.
☐ Completed S.E.A.

☒ Select All
☐ Deselect All

Map Search



Are you a registered user?

We want your feedback. As a registered user you can share your ideas and opinions with us. It's quick and easy. Just click the button below.



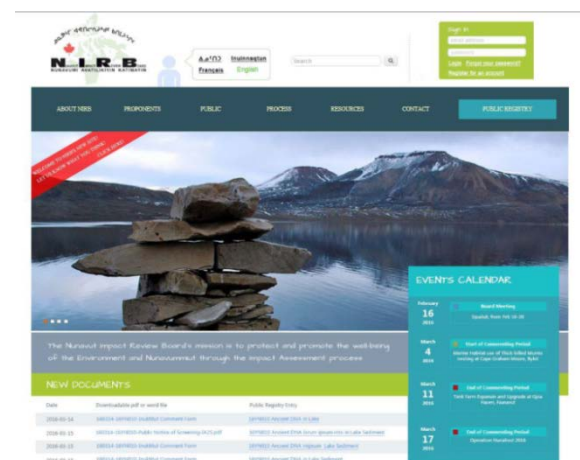
Qanuq ilitpaalliqniaqqit NIRB-kut qauyihagtainik?

• Inuit Titiraqviat

- Qiniqluhi havaaghaqnik titiraqmikluuniit
- Atiliqtuqtauluhi naunaitkutanik tuniyauqattariami

• Tatqiqhiut

- Aulayut havaaghat umikvighaillu



GRAYS BAY ROAD AND PORT PROJECT

AGIAQMI APQUTAA UNALU
TULAKVINGA HAVAANGIT

Who is the Proponent?

- Kitikmeot Inuit Association
- Government of Nunavut



Kituuva havaakhaliuqtup?

- Kitikmeot Inuit Katimayiingit
- Nunavut Kavamanga



The Project would be undertaken through a partnership between the Kitikmeot Inuit Association and the Government of Nunavut with the objective of establishing infrastructure connecting the existing Tibbitt-Contwoyto Winter Road to the Northwest Passage and providing an economically viable supply route for Nunavummiut, public, and industrial operators in the area.

Tamna Havanguyuuq havaguiyauniaq atuqhugit katutyiqatigikni tapkuat Kitikmeot Inuit Katimayiingit tapkuatlu Nunavut Kavamanga ihumagiplugu pinguqtauni hanalgutit atatyutai tatya atuqtut Tibbitt-Contwoyto Ukiumi Apqut talvunga Ukiurtaqtumi Tagiunga Aulagiasq piqaqtitnilu maniliugutit atulaqni ilakhanut aulagiasq tahapkununga Nunavummiut, inungnut, havakvitlu aulattiya tahamani nunani.

Project Location



Humi Havauhikhaq



Figure 1-1

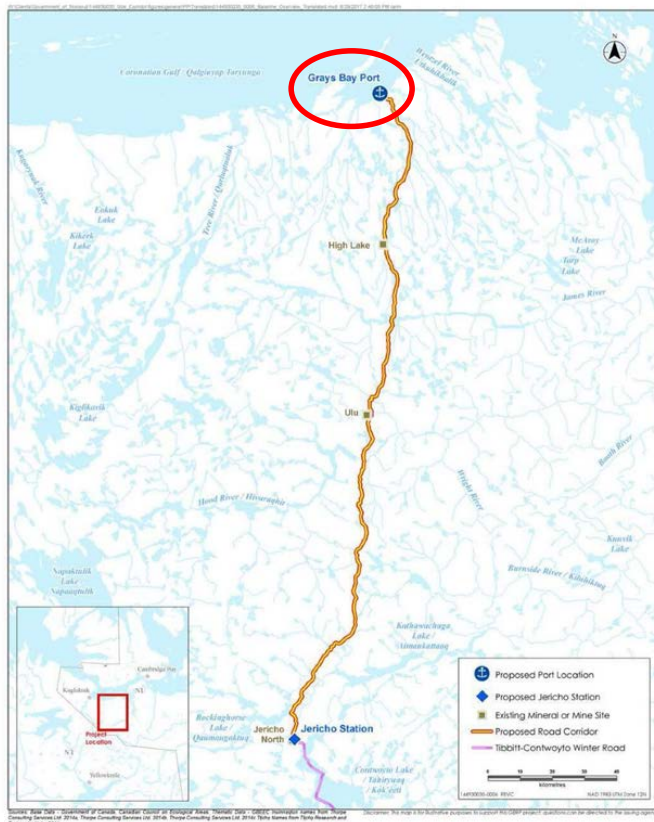


- Port and airstrip at Grays Bay
- All-Weather Road from the Port to Jericho Station
- Jericho Station
- Winter Road connection to Tibbit-Contwoyto Winter Road
- Mobilization and Shipping

Humi Havauhikhaq

- Ikaarvingit milvingillu uvani Agiaqmi
- Ukiuraalungmi Apqutinga hamanngat Ikaaruhianmit uvunga Jericho Havagviata
- Jericho Havagviata
- Ukiumi Apqutaa katilviuhimayuq uvunga Tibbitt-Tahiryuaq Ukiumi Apqutaa
- Ingilravikhaat Agyartuiyut

Agiaqmi Tulakvinga



Project Overview

Figure 1-1

- Hikuiqhimagangat Taryurmi Umiaqtuqtumi
 - (Taaqhivalirvia-Tattiarnaqtuq)
- Tulagvingit haffumani 75,000 nit uqumaidiutilgit angiyuryuat (dwt) umiuyait
- Mikiyut Qayait Kangiqhuinnarmi
- 1,800 miitas Milvik
- 20 nit inulingnit ukiivikhangit
 - (80 nit igluliuqhutik)
- Uqhuryuarvingit (25 milian liitastigut pilihaaqhimayut, naahimalugit 100 milian liitastigut)
- Apqutiit aahiillu igluqpaqarvikhaliuqtut
- Hauvikhangit uvani Agiaqmi Tulagvikhaq



Figure 1-1

- Open Water shipping
 - (July – October)
- Wharf for 75,000 dwt ships
- Laydown areas
- Small Craft Harbour
- 1,800 m Airstrip
- 20 person camp
 - (80 during construction)
- Tank farm (25 M litres to start, up to 100 M litres)
- Roads and other infrastructure
- Dredging

Agiaqmi Tulakvinga



Grays Bay Conceptual Port Site Plan

Figure 2-1

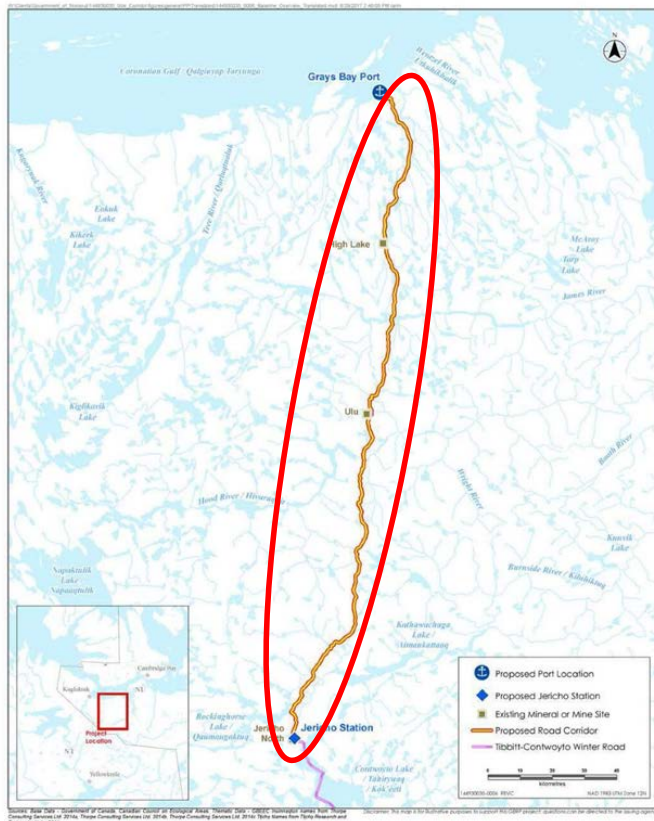


GBEEC
Gray Bar Engineering & Environmental Consultants

Figure 1-1

- 230 km taimaa
hilaliqutingit apqutikhaat
- 18 ikaarvikhaat
- 50 nit angiyaaqtut qurlualiit
(1.5-5 m)
- Hitamat 80-inulingnit
ukiivikhait igluliuqtakhaat
- Ukiumi apqutingit
hamanngat Jericho
Havagvingnit Tahiryuarmut
unalu Tibbitt-Tahiryuaq
Ukiumi Apqutaa

Grays Bay Road

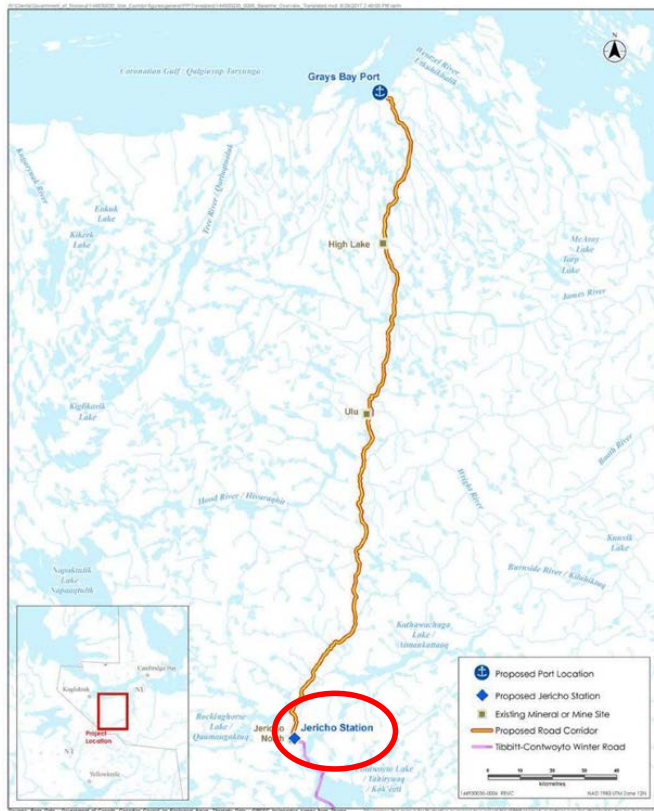


Project Overview

Figure 1-1

- 230 km all-season toll road
- 18 bridges
- 50 large culverts (1.5-5 m)
- Four 80-person camps for construction
- Winter road from Jericho Station to Contwoyto Lake and T-C Winter Road

Jericho Havakvia

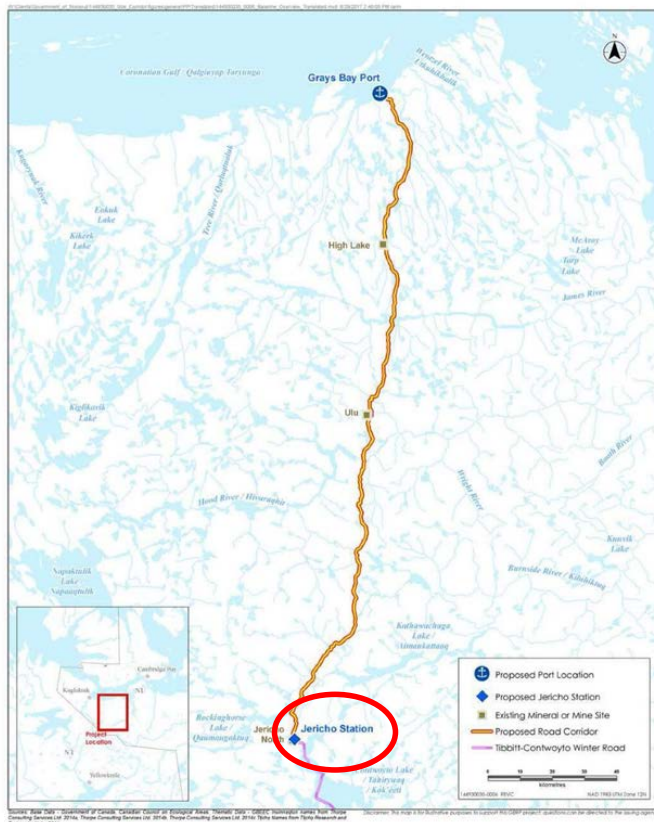


Project Overview

Figure 1-1

- Iglukakviit
- Akhaluutiqarvingit, uqhuryualiqinikkut iningit
- Uqhuryuaqarvik (20 milian liitastigut)
- Atuqtaunniarungnaqhiva ngit uumani Jericho milvingit
- Ihuaqharvikhangit ukiumi apqutingit agyaqhiivingit

Jericho Station



- Camp
- Parking, refueling areas
- Tank farm (20 M litres)
- Potential use of Jericho airstrip
- Staging area for winter road cargo

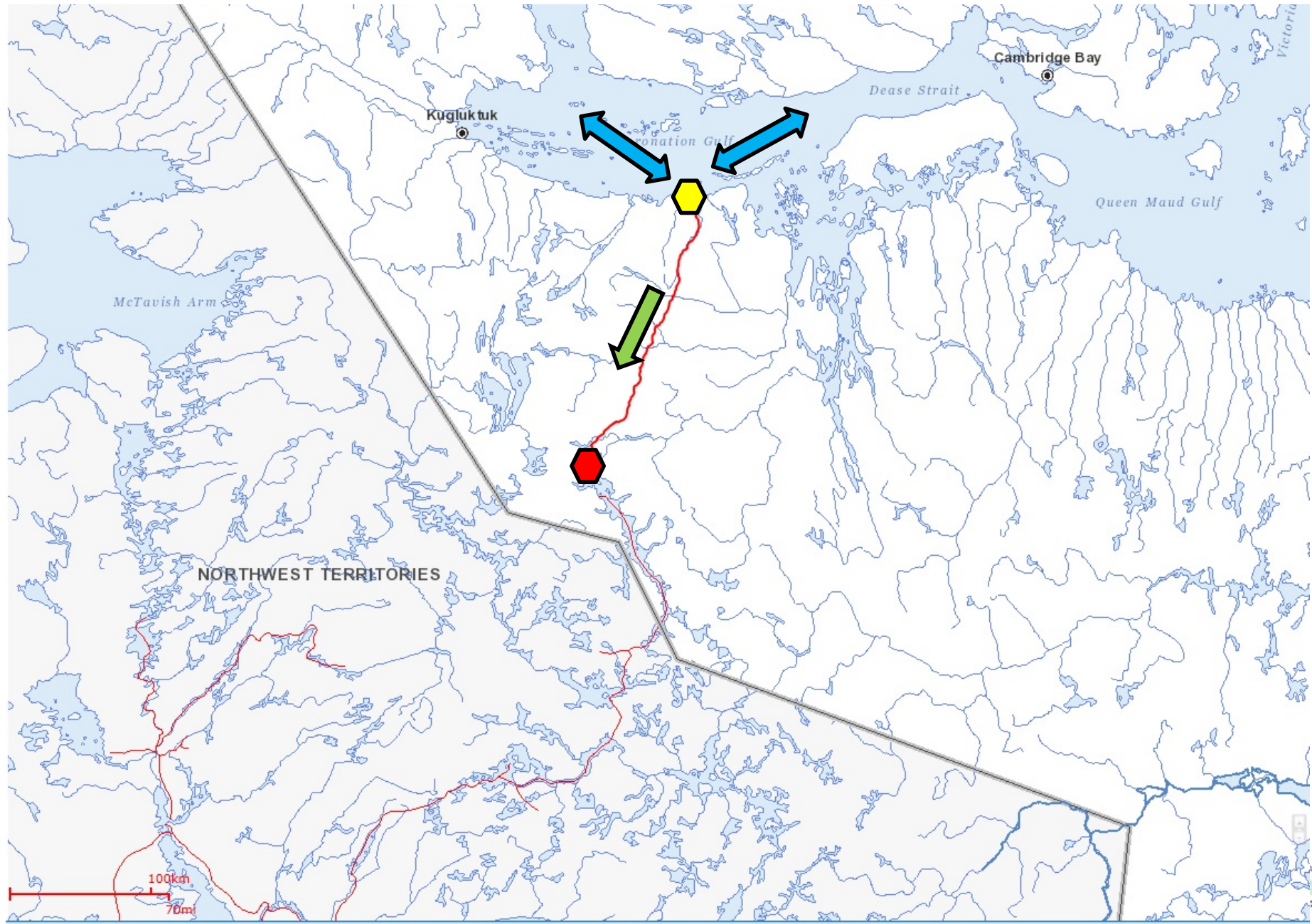
Figure 1-1

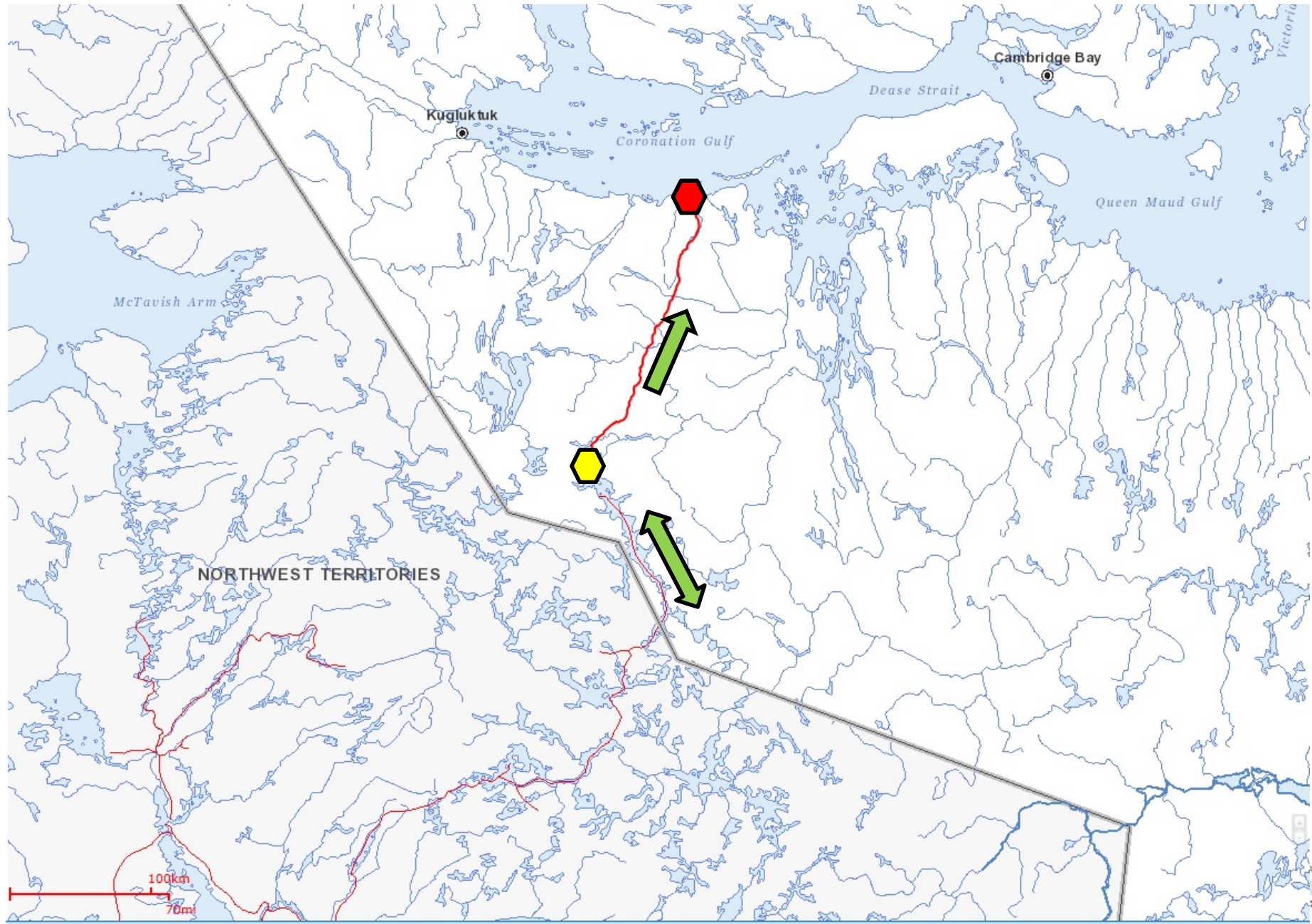
Other Project Activities

- Approx. 40 quarries for construction and maintenance
 - approx: every 7 km along road
 - 1/3 (14) possibly permanent

Aahiit Havaangit Hulidjuhiit

- Naahimayungnaqhiyang it 40 nit uyaraqtauyut igluliuqtakhait hanavikhangillu
 - Naahimayungnaqhiyangit 7 nit km apqut hinaani
 - 1/3 (14) havaariniaqtangit





Project Schedule

- Pre-Construction: approx. 2 years (2020-2022)
- Construction approx: 3 years (2023-2025)
- Operations: 75 year design life
- Closure: no plans

Havauhikhamut Naunaitkutinga

- Igluliuqtinnani: 2 ukiunganik naahimayungnaqhivauk (2020-2022)
- Igluliurvikhaat: 3 ukiungani (2023-2025)
- Aulapkaininnga: 75 ukiungani tiliurvikhaat ukiungani
- Umigutikhaat: upalungaiqhimaittuq

Inuliqutit-maniliugutit

- Havaakhat
 - Igluliurutikhaat Ilakhaat: 380
 - Aulapkaininnga: 20-30
- Kanturagutit nanminilgitlu pilaqnit
 - Nunallaanut umiakkuurutit?

Socio-Economic

- Employment
 - Construction Phase: 380
 - Operations: 20-30
- Contracting and Business Opportunities
 - Community resupply?

SCOPING OF THE GRAYS BAY PROJECT

HIVUNIKHAUTIKHANGIT
HAFFUMANI AGIAQMI HAVAANGIT

What is Scoping?

- A “**SCOPE**” is a tool that helps us see better
 - For NIRB, a SCOPE is a list of all parts of the project, and the parts of the environment that might be affected by the project
- Scoping also helps us see better what people think about the project, and what parts of the environment are important to you



The NIRB asks the company to explain the Project and those parts of the environment that are important in a lot more detail

Hunaugami Hivunikhautikhaat?

- Una “**HIVUNIKHAQ**” ingilrutauyq ikayuutauyuq taututtiariangani
 - Uumani NIRB, una HIVUNIKHAQ tamaita tainiqagtunq tamatia havaanut, unalu ilangani avatingnut aktuqhimalaaqtut havaatigut
- Hivunikhautikhaq ikayuutauvlunilu taututtiariangani qanuq inuit ihumagiyaat havaatigut, hunalu ilangani haffumani avatingit aturnaqtut ilingnut



Una NIRB apirivaktut kampaninut tutqittiaquvlugit Havaanut ilanganilu avataita atuliqtauyukhaq tukiqattiaqtumik

Scoping List

- All parts of the Project and activities for the whole time
- Physical and people environments
 - Parts of the environment that are important
- Alternative ways to do the project

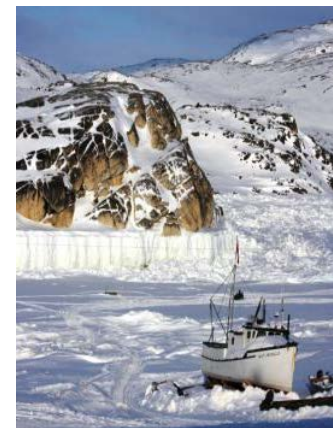


Hivunikhautikhangit Tainiit

- Tamaita ilanganit Havaanut huliyakhangillu qautamaat
- Qaanganit inungnullu avataita
 - Ilangani haffumani avataita atuliqtauyukhaq
- Himmauhikhamaat inikhaanut qanuq havaktauyaamingni

Ecosystemic Impacts

Avatinganut Ayurhautingit



Ecosystemic Impacts

- Air quality
- Climate and meteorology
- Noise and vibration
- Terrestrial Environment
- Aquatic Environment
- Terrestrial Wildlife and Habitat
- Birds and bird habitat
- Marine environment
- Marine wildlife
- Terrestrial and marine Species at Risk

Avatinganut Ayurhauingit

- Aniqhaaqtapitknik qanirutaakhaa
- Hila hilaliquitlu
- Nivyaaqtuq ingutaarninngalu
- Nunaliriniq
- Tariup Avatinga
- Nunap qaanganit anngutikhat Nuyuqpaktangillu
- Tingmiat unalu tingmiat nayugangit
- Taryuliriniq
- Tarium huradjat
- Nunamiuttaq taryurmiuttaillu Uumayuit Ihumaaluutauvaktut

Socio-Economic Impacts

Inungnut ikayuutikhait Ayurhaulingit



Socio-Economic Impacts

- Employment
- Education and training
- Business Opportunities
- Population demographics
- Traditional activity & knowledge and community knowledge
- Non-traditional land use and resource use
- Archaeology, Paleontology and Cultural Resources
- Health and well being
- Community infrastructure and public services
- Health and safety including employee and public safety

Inungnut ikayuutikhait Ayurhautingit

- Havaakhat
- Ilihainiq ayuirhainiqlu
- Havaanikhatirutikhaq
- Inugiakni hiamamanit
- Inuit pitquhiriyangit hulidjuhiit unalu qauyimayatuqangit nunalingnit qauyimayainnit
- Pitquhiliqutaungittut nuna atuqni piqaqnitlu atuqni
- Initurliminiit, Ittarnittait Pitquhiriyangillu Avataita
- Aaniaqtailiniq inuuhigikniqlu
- Nunallaanut aulapkaidjutikhangit inungnullu ikayuutikhat
- Aaniaqtailiniq hivuganaitniqlu ilalgit havaktut inungnutlu hivuganaitni

Other Factors

- Climate Change
- Cumulative effects
- Transboundary effects

Aallait Ihumaaluutingit

- Hilaryuami alanguktuk
- Tamatkiumayunik
Ihuikgutivaktunik
- Kiklinganut qanuriliurutauyut



DRAFT GUIDELINES FOR THE ENVIRONMENTAL IMPACT STATEMENT OF THE GRAYS BAY PROJECT

TITIRAINNAQHIMAYUT MALIKTAKHAIT
AVATILIQINIRNUT AKTUQTAUHIMANINGIT
KIUVINIIT HAFFUMANI AGIAQMI HAVAANGIT

EIS Guidelines

The Guidelines instruct the Proponent what NIRB expects to appear in the Environmental Impact Statement and how it is presented.

Avatiliqinirnut Aktuqtauhi­maningit Kiu­viniit (EIS) Ma­liktakhainit

Una Ma­liktakhait ilitturnaqtuq
Havaakhaliuqtum qanuq NIRB
naahurihimayangit tautugiami iluani
Avatiliqinirnut Aktuqtauhi­maningit
Kiu­viniit qanurlu tautungniarmangaat.

ELS Guidelines Project Details

- Project Phases
 - When are things going to be done?
- Project alternatives
 - Are there other ways of doing it?
- Accidents and malfunctions

Avatiliqinirnut Aktuqtauhiiningit Kiuviniiit (ELS) Maliktakhangit Havaanut Hivunikhaat

- Havauhikhaq Ilangat
 - Qakugu hulidjuhiit iniqhimaniaqqat?
- Havaatigut himmauhikhanit
 - Aahiit inikhautiqaqqaat pigiami?

Qanuriliuqaqqat huyuqaqqallu

The Setting

- Description of the Environment and Baseline information
 - What does the environment look like now?
- Biophysical Environment and Impact Assessment
- Socio-Economic Environment and Impact Assessment
- Public Consultation, Inuit Qaujimaningit, Inuit Qaujimajatuqangit, and Traditional and Community Knowledge

Nayugaat

- Qanurittaakhaanik uumannga Avatinga unalu Kiklinga naunaitkutat
 - Qanuq nunaup avatingit itpa tadja?
- Avatinganit Avatinga unalu Ayurhautiyuq Ihivriuqninnga
- Inungnut maniliurninnga Avatinga unalu Ayurhautiyuq Ihivriuqninnga
- Inungnut Uqaqatigiikniq, Inuit Qaujimaningit, Inuit Qaujimajatuqangit, Qangaraaluknitat unalu Nunallaanut Ilihimanig

Project Planning

- Avoid or mitigate adverse effects
 - Acts, Regulations, licences, and permits
 - Best Practices
 - Contingency Plan
- Optimize benefits
 - Regulations
 - Best Practices
- Environmental Protection Plan
- Socio-Economic Plans
- Closure and Reclamation Plans
- Monitoring and Mitigation Plans

Havaangit Ihumaliurninnganut

- Hiamittaililugu ingattaqhittaililugulu ihuittut atuliqtauningit
 - Maligait, Maliguarutit, laisiit unalu laisit ilitaqhijut
 - Nakuuqpiagtumi Uuktuutikhat
 - Upalungaiqhimadjut Ihumaliurut
- Ihuaghimayauyut ikayuuhit
 - Maliguarutit
 - Nakuuqpiagtumi Uuktuutikhat
- Avatiliriniqmut Hapummiutinga Ihumaliurut
- Inungnut-Ikayuutit Ihumaliurutit
- Umikhimayuq unalu Piffaarninnga Ihumaliurutit
- Munariniq unalu Ikikliyuumiqtuq Ihumaliurutit

CLOSING REMARKS



NIRB Wants to Hear From You!

- What do you think about the Project?
- Comments, questions or concerns
- What environmental components are important to you?
- What potential effects do you think this Project might have on the land, animals and people?

**Fill out a NIRB
comment form!**

NIRB-kut Iliknit Tuhaayumayut!

- Qanuqtut ihumagiviuk Havauhikhaq?
- Niplautigiyangit, apiqqutit ihumaaluutit
- Hup avatingnut ilaliutingit aturnaqa ilingnut?
- Qanuq ihumagiyauva atuliqtaunianut ihumagiyatit haffumani Havaatigut ilitturniaqqa nunanut, anngutikhanut, inungnullu?

**Iniqtiqlugu NIRB
uqarumayarnik
apirhuutimik!**

Next Steps in NIRB's Review

- Final Scope List
 - Will include the feedback provided at these meetings to ensure that the assessment considers impacts on what is important to you
- Revised Draft EIS Guidelines
- Final EIS Guidelines

Talvannga piyakhaq NIRB-kut Ihivriuqninnganik

- Iniqpiaqtumik Hivunikhanut Tainiit
 - Ilaliutauniaqqa qanuq ihumagiyamingnit uvani katimalirumik ilittuqhimagiangani hamna ihivriurningit maliktangit aktuqtaunianut atuliqtaunnaqqa ilingnut
- Numiktauhimayut Titirainnaqhimayut Avatiliqinirnut Aktuqtauhimangingit Kiuviniiit Maliktakhait
- Iniqpiaqhimayuq Avatiliqinirnut Aktuqtauhimangingit Kiuviniiit (FEIS) Maliktakhainit



How to contact NIRB?

Qanuqtut uqaqatiginiaqqigu NIRB-kut?

Phone (toll-free):

1-866-233-3033

Hivayaut (akiqanngittukkut):

Fax:

(867) 983-2594

Hivayaut Tittikanik Aullaktittaitaaktuk Kayumiktukut:

Email:

info@nirb.ca

Qaritauyakkut:

Regular post:

Nunavut Impact Review Board
PO Box 1360
Cambridge Bay, NU
X0B 0C0

Atuinnaqpagaat takugakhaq:

Nunavut Aviktulikyit Katimayit
P.O. Titikikvia 1360
Iqaluktuuttiaq, NU
X0B 0C0



Thank you for sharing your participation with us today
Quanaqqutit ilauhimaqataugavit ublumi

Thank you!
Quanaqqutit!

