

12 June 2018

Proj. No.: 307071-01148

Nunavut Research Institute
Box 1720, Building 959
Iqaluit, NU
XOA OHO

Mosha Cote, Manager, Research Liaison

Dear Mr. Cote:

Re: [መድኃኒት ምርጫ ምርመራ]፣ ከባለሥልጣን (NRI) ለሥራው ለሚሰሩ
 ሰራተኛው ለሚሰሩ - ለሥራው ለሚሰሩ (መድኃኒት ምርጫ)
 ለሥራው ለሚሰሩ #01 034 16N-M]

1. $u \in \Delta^{\text{fb}}(\mathcal{C})$ is $\Delta^{\text{fb}}(\mathcal{C})$ and $\Delta^{\text{fb}}(\mathcal{C})$ is $\Delta^{\text{fb}}(\mathcal{C})$

[illegible][illegible]

2. $\varphi_{b \rightarrow d} \varphi_{b \rightarrow c} \langle \Delta n^2 \rangle \langle \Delta L \rangle \wedge \text{con} \varphi_{c \rightarrow d} \varphi_{b \rightarrow c} \varphi_{c \rightarrow d} \sigma^2$

[illegible][illegible]

ᐅᑎᓴ	ᑕᐃᑭᓴ
ᐃᓄᑎᐅ ᐅᑦᑕᑦᐅᑦ	ᑦᐅᐃᓴᑦᑎᓴᑎᓴ
ᑕᐃᓴᑦ ᐱᑦᑕ	ᐃᑕᑦᑦ ᑦᐅᐃᑕᐅᑦᑕᐅᑦᑕᐅᑦ ᐅᓴᑎᑕ ᐃᑕᑦᑦᑦᑦᑦᑦᑦᑦᑦ ᑦᐅᐃᓴᑎᑕᑦᑦᑦᑦᑦᑦ ᑭᑦᑦᑦᑦᑦᑦᑦᑦ
ᑦᑕᑦᑦ ᐃᑕᑦ	ᐱᑕᑎᐃᐅᑦᑦ ᑦᐅᐃᓴᑦᑎᓴ

3. ለጥራጥራ ምዕረግ መግለጫ

[illegible][illegible][illegible]

ልጋራዊ	ሰራተኛ	የክልላዊና የክልላዊ አስተዳደር
የክልላዊና የሰራተኛ ልጋራዊ	ለዚህ ዓመት በሰራተኛው የክልላዊና የሰራተኛ ልጋራዊ ልማትና የሰራተኛ ልማት ልማት	ለዚህ ዓመት በሰራተኛው የክልላዊና የሰራተኛ ልጋራዊ ልማትና የሰራተኛ ልማት ልማት
	በዚህ ዓመት በሰራተኛው የክልላዊና የሰራተኛ ልጋራዊ ልማትና የሰራተኛ ልማት ልማት	በዚህ ዓመት በሰራተኛው የክልላዊና የሰራተኛ ልጋራዊ ልማትና የሰራተኛ ልማት ልማት



Advisian 3



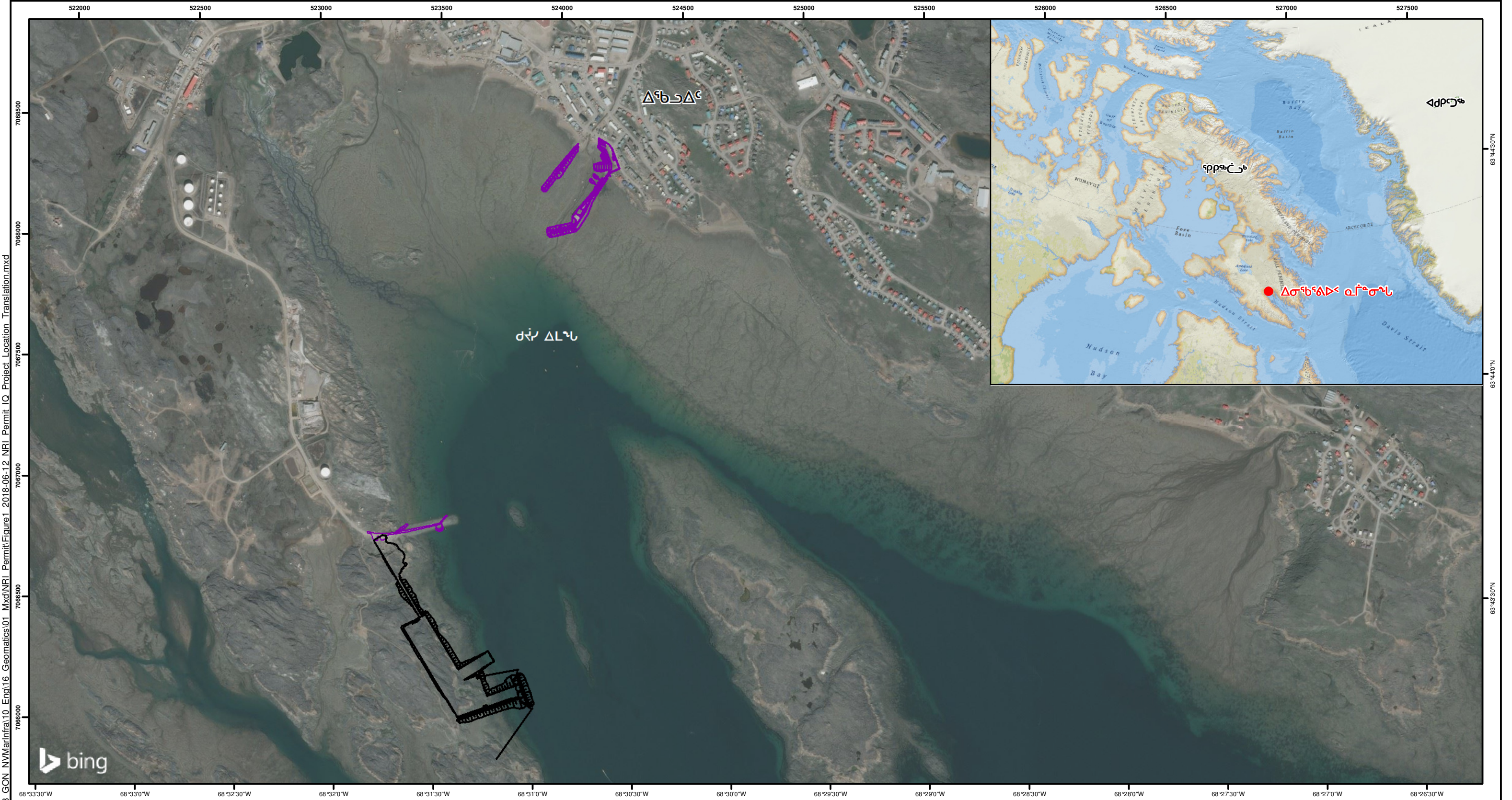
Advisian

WorleyParsons Group

Attachment 1

ᐱᓄᓇᓂᓄᓇᓂᓄᓇ

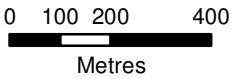




FILE LOCATION: U:\YVR\307071\01148_GON_NVMar\infra\10_Eng\16_Geomatics\01_Mxd\NRI_Permit\Figure1_2018-06-12_NRI_Permit_IQ_Project_Location_Translation.mxd

ᐅᓂᓐᓐᓐᓐᓐᓐ

- ᐅᓐᓐᓐᓐᓐᓐᓐᓐ ᐅᓐᓐᓐ ᐅᓐᓐᓐ ᐅᓐᓐᓐᓐᓐᓐᓐ
- ᐅᓐᓐᓐᓐᓐᓐᓐᓐ ᐅᓐᓐᓐᓐᓐᓐ ᐅᓐᓐᓐᓐᓐ



Note:
Coordinate System: NAD 1983 UTM Zone 19N
Aerial Photo and Basedata from City of Iqaluit, 2016

B SHEET	CUSTOMER:
OneWay to zero harm	
DATE:	12/06/2018
DRAWN:	Y.M.
EDITED:	K.R.
APPROVED:	XX

"This drawing is prepared for the use of our customer as specified in the accompanying report. WorleyParsons Canada Ltd. assumes no liability to any other party for any representations contained in this drawing."



Advisian
WorleyParsons Group

ᐅᓐᓐᓐ ᐅᓐᓐᓐᓐᓐᓐᓐ ᐅᓐᓐᓐᓐᓐᓐᓐ ᐅᓐᓐᓐᓐᓐ

WORLEYPARSONS PROJECT No:	FIG No:	REV
307071-01148	1	A