



## **NIRB Uuktuutinga Ihivriughikhamut #125364**

### **Crocker Bay Study and NW Passage to Gjoa Haven**

**Uuktuutinga Qanurittuq:** New

**Havaap Qanurittunia:** Scientific Research

**Uuktuutinga Ublua:** 6/27/2018 10:46:41 PM

**Period of operation:** from 0001-01-01 to 0001-01-01

**Piumayaat Angirutinga:** from 0001-01-01 to 0001-01-01

**Havauhikhaq Ikayuqtinga:** Nicole Trenholm  
990 Awald Rd  
Annapolis md 21403  
United States  
Hivayautit Nampanga:: 2152084464, Kayumiktukkut Nampanga::

# QANURITTUT

## Tukihiannaqtunik havaariyaumayumik uqauhiuyun

Qablunaatitut: Marine Based Scientific Research: This is a low impact study using a vessel of opportunity. The research group is made up of 2 University graduate students and two Canadian pleasure yacht adventurers. The total voyage is from July 28 to August 26, 2018. The work involves a 4 day stop at Croker Bay in a 40 sailing boat for bathymetric & oceanographic surveys. Cruise ends for 2 students at Gjoa Haven, where they will fly back to the US, while Canadian vessel will proceed through the passage. Alternative fly out locations includes Pond Inlet and Resolute. Location: Qikiqtani Region [Croker Bay and Northwest Passage Transit]

Uiviititut: n/a

Inuktitut: Marine Based Scientific Research: This is a low impact study using a vessel of opportunity. The research group is made up of 2 University graduate students and two Canadian pleasure yacht adventurers. The total voyage is from July 28 to August 26, 2018. The work involves a 4 day stop at Croker Bay in a 40 sailing boat for bathymetric & oceanographic surveys. Cruise ends for 2 students at Gjoa Haven, where they will fly back to the US, while Canadian vessel will proceed through the passage. Alternative fly out locations includes Pond Inlet and Resolute. Location: Qikiqtani Region [Croker Bay and Northwest Passage Transit]

Inuinnaqtun: n/a

## Personnel

Personnel on site: 4

Days on site: 4

Total Person days: 16

Operations Phase: from 2018-07-28 to 2018-08-26

# Hulilukaarutit

Inigiya	Hulilukaarut Qanurittuq	Nunannga Qanurittaakhaanik	Initurlinga qanuritpa	Initurlinga utuqqarnitat unaluuniit Ingilraaqnitat Uyarannguqtut akhuurninnga	Qanitqiyauyuq qanitqiamut nunallaat kitulluuniit ahiruqtaliyainnit nuna
Transit through Northwest Passage with survey in Crocker Bay	Marine Based Activities	Marine	N/A previously surveyed bay	N/A	Resolute, Pond Inlet and Gjoa Haven

## Nunaliin Ilauyun, Aviktuqhimayuniitunullu Ikayuuhiarunguyun

Nunauyuq	Atia	Timiuyuq	Upluani Uqaqatigiyaungmata
Information is not available			

# Angiuttauvaktunik

Naunaiqlugu nunanga talvani havauhikhaq ittuq:

Transboundary  
Kitikmeot  
North Baffin

## Angiuttauvaktunik

Munariniqmut Ayuittiaqtuq	Angirutinga Qanurittuq	Tadja Qanurittaakhaanik	Ublua Tuniyauyuq/Uuktuqtuq	Umikvikhaa Ublua
Nunavunmi Ihivriuqniqmut Timiqutigiyanga	NPC No 148838	Active	2018-06-19	2018-08-28

## Project transportation types

Transportation Type	Qanuq Atuqtauniarmangaa	Length of Use
Water	recreational yacht	

## Project accomodation types

Alaanut,

# Ihuaqutivaluin Atuqtauyukhan

Hanalrutit atuqtaunahuat (ukuallu ikuutat, pampiutainnik, tingmitinik, akhaluutinik, hunaluuniit)

Hanalrutit Qanurittuq	Qaffiuyut	Aktikkulaanga – Qanurittullu	Qanuq Atuqtauniarmangaa
yacht	1	39 feet	cruise, research

## Qanurittuq Urhuqyuaq unalu Qayangnaqtut Hunavaluit Aturninnga

Qanurittuq urhuqyuaq hunavaluit aturninnga:	Urhuqyuaq Qanurittuq	Qaffiuyut qattaryut	Qattaryuk Aktikkulaanga	Atauttimut Qaffiuyut	Ilanga	Qanuq Atuqtauniarmangaa
Gasoline	fuel	3	300	900	Gallons	inboard engine when needed

## Imaqmik Aturninnga

Ubluq qanuraaluk (m3)	Aturumayain imavaluin utiqtittagaani qanuq	Atulirumayain imavaluin utiqtittagani humi
0	Carry drinking water from Greenland	Greenland

# Iqqakuq

## Ikkakunik Munakgiyauyunik

Havaulikhaq Hulilukaarut	Qanurittuq Iqqakut	Ihumagiyauyuq Qanuraaluktut Atuqtait	Qanuq Iqqakuurniarmangaa	Halummaqtitarnirutikhan piyutin
Marine Based Activities	Other, kitchen rubbish	2 bags	leave stowed in vessel	n/a

### Avatiliriniqmut Ayurhautingit:

More collaborative research discoveries between Canadian agency and academic researchers with US academic researchers.

# **Additional Information**

**SECTION A1: Project Info**

**SECTION A2: Allweather Road**

**SECTION A3: Winter Road**

**SECTION B1: Project Info**

**SECTION B2: Exploration Activity**

**SECTION B3: Geosciences**

**SECTION B4: Drilling**

**SECTION B5: Stripping**

**SECTION B6: Underground Activity**

**SECTION B7: Waste Rock**

**SECTION B8: Stockpiles**

**SECTION B9: Mine Development**

**SECTION B10: Geology**

**SECTION B11: Mine**

**SECTION B12: Mill**

**SECTION C1: Pits**

**SECTION D1: Facility**

**SECTION D2: Facility Construction**

**SECTION D3: Facility Operation**

**SECTION D4: Vessel Use**

**SECTION E1: Offshore Survey**

**SECTION E2: Nearshore Survey**

**SECTION E3: Vessel Use**

**SECTION F1: Site Cleanup**

**SECTION G1: Well Authorization**

**SECTION G2: Onland Exploration**

**SECTION G3: Offshore Exploration**

**SECTION G4: Rig**

**SECTION H1: Vessel Use**

Survey observations regarding the ice and ocean physical and environmental conditions in the NW Passage and Crocker Bay.

**SECTION H2: Disposal At Sea**

**SECTION I1: Municipal Development**

**Qanurittuq Ittunik Avatinga: Avatingalluanga**

**Qanurittuq Ittunik Avatinga: Inuuhimayunut Avatinga**

**Qanurittuq Ittunik Avatinga: Inungit-maniliurutingit Avatinga**

**Miscellaneous Project Information**

**Naunaiyainiq ukuninnga Ayurhautingit unalu Piumayaat Ikikliyuumiutinahuarutit**

**Tamatkiumayunik Ihuikgutivaktunik**



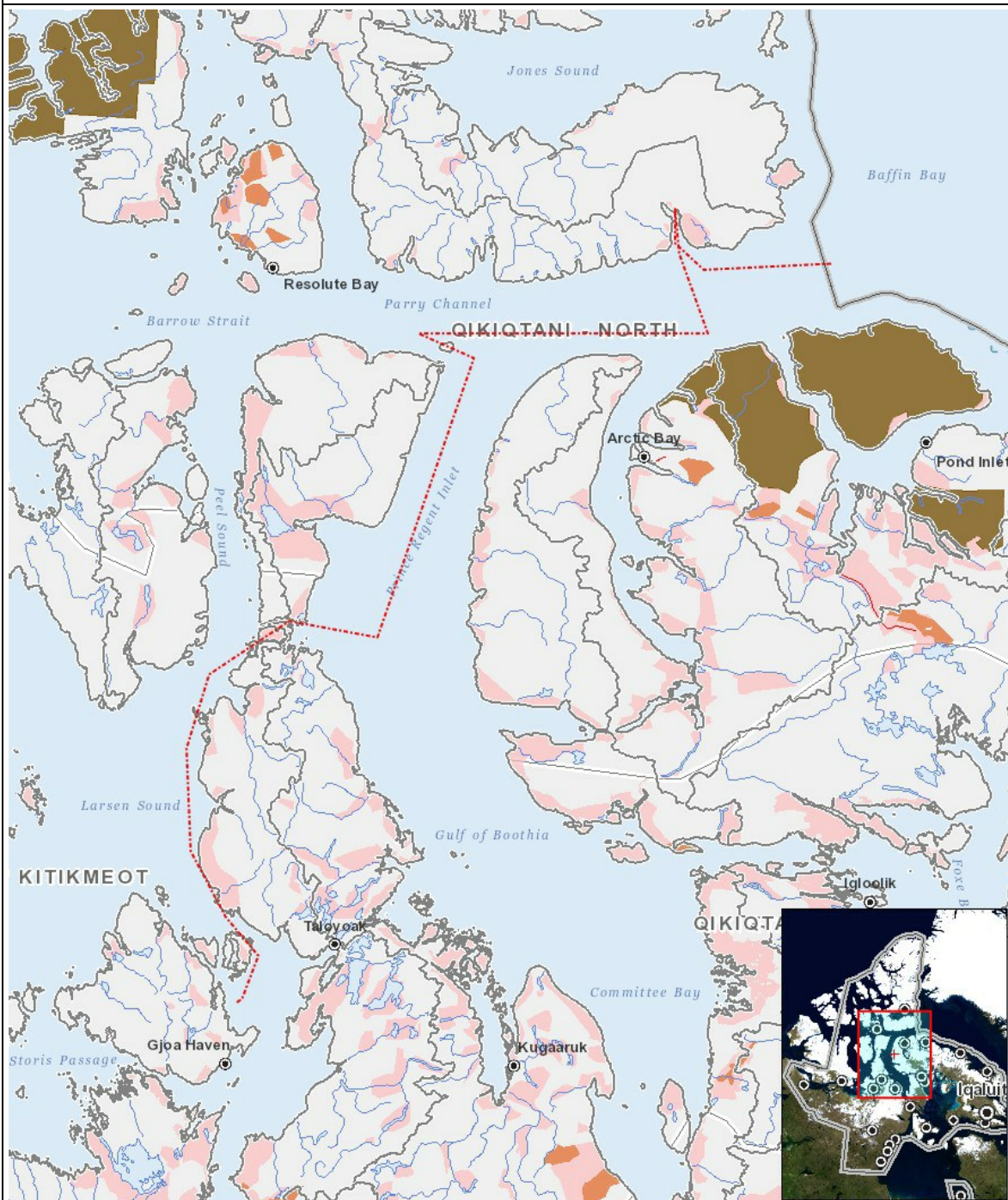
# Impacts

## Ilitariyauniq Avatiliriniqmut Ayurhautingit

		PHYSICAL	Designated environmental areas	Ground stability	Permafrost	Hydrology / Limnology	Water quality	Climate conditions	Eskers and other unique or fragile landscapes	Surface and bedrock geology	Sediment and soil quality	Tidal processes and bathymetry	Air quality	Noise levels	BIOLOGICAL	Vegetation	Wildlife, including habitat and migration patterns	Birds, including habitat and migration patterns	Aquatic species, incl. habitat and migration/spawning	Wildlife protected areas	SOCIO-ECONOMIC	Archaeological and cultural historic sites	Employment	Community wellness	Community infrastructure	Human health
Havakvinga																										
-		-	-	-	-	-	-	-	-	-	-	-	-	-	-	-	-	-	-	-	-	-	-	-	-	-
Aulapkaininnga																										
Marine Based Activities		-	-	-	-	-	P	-	-	-	P	-	-	-	-	-	-	-	-	-	-	-	-	-	-	-
Piiqtauniq																										
-		-	-	-	-	-	-	-	-	-	-	-	-	-	-	-	-	-	-	-	-	-	-	-	-	-

(P = Nakuuyuq, N = Nakuungittut unalu mikhilimaittuq, M = Nakuungittut unalu mikhittaaqtuq, U = Naluyauyuq)

## PROJECT MAP



## LIST OF PROJECT GEOMETRIES:

- |   |          |                                                              |
|---|----------|--------------------------------------------------------------|
| 1 | polyline | Transit through Northwest Passage with survey in Crocker Bay |
|---|----------|--------------------------------------------------------------|