



NIRB Uuktuutinga Ihivriughikhamut #125359

Stream occupancy of young-of-year arctic grayling (*Thymallus arcticus*) and the associated impact from the wastewater treatment facility in Baker Lake

Uuktuutinga Qanurittuq: New

Havaap Qanurittunia: Scientific Research

Uuktuutinga Ublua: 6/19/2018 4:24:47 PM

Period of operation: from 0001-01-01 to 0001-01-01

Piumayaat Angirutinga: from 0001-01-01 to 0001-01-01

Havauhikhaq Ikayuqtinga: Jared Ellenor
Univeristy of Waterloo
ESC-222B 200 University Avenue West
Waterloo Ontario N2L 3G1
Canada
Hivayautit Nampanga:: 6042408269, Kayumiktukkut Nampanga::

QANURITTUT

Tukihinnaqtunik havaariyauyumayumik uqauhiuyun

Qablunaatitut: Please see attached document.

Uiviititut: N/A

Inuktitut: Please see attached document.

Inuinnaqtun: N/A

Personnel

Personnel on site: 2

Days on site: 60

Total Person days: 120

Operations Phase: from 2018-07-01 to 2021-10-01

Hulilukaarutit

Inigiya	Hulilukaarut Qanurittuq	Nunannga Qanurittaakhaanik	Initurlinga qanuritpa	Initurlinga utuqqarnitat unaluuniit Ingilraaqnitat Uyarannguqtut akhuurninnga	Qanitqiyauyuq qanitqiamut nunallaat kitulluuniit ahiruqtaliyainnit nuna
Region encompassing wastewater system and potential reference systems	Researching	Municipal	N/A	N/A	Wastewater treatment system is in the community of Baker Lake. Research conducted on land ranging in status, and includes municipal, Inuit owned surface and sub-surface, and crown land.

Nunaliin Ilauyun, Aviktuqhimayuniitunullu Ikayuuhiarunguyun

Nunauyuq	Atia	Timiuyuq	Upluani Uqaqatigiyaungmata
Information is not available			

Angiuttauvaktunik

Naunaiqlugu nunanga talvani havauhikhaq ittuq:

Kivalliq

Angiuttauvaktunik

Munariniqmut Ayuittiaqtuq	Angirutinga Qanurittuq	Tadja Qanurittaakhaanik	Ublua Tuniyauyuq/Uuktuqtuq	Umikvikhaa Ublua
Kivalliq Inuit Katimayit	Research exemption application	Active		
Nunavunmi Ihivriuqniqmut Timiquitigiyanga	Conformity determination	Active	2018-06-18	

Project transportation types

Transportation Type	Qanuq Atuqtauniarmangaa	Length of Use
Air	Helicopter use will be dependent on site access, and is anticipated to be minimal	
Water	Travel by boat may be required , but is anticipated to be infrequent	
Land	Travel by truck will occur along the Agnico Eagle all weather access road from Baker Lake to Amaruq Camp. Travel by foot is also anticipated.	

Project accomodation types

Nunauyuq

Alaanut,

Ihuaqutivaluin Atuqtauyukhan

Hanalrutit atuqtaunahuat (ukuallu ikuutat, pampiutainnik, tingmitinik, akhaluutinik, hunaluuniit)

Hanalrutit Qanurittuq	Qaffiuyut	Aktikkulaanga – Qanurittullu	Qanuq Atuqtauniarmangaa
Pick-up Truck	1	6m x 2m x 3m	Travel to site
Boat	1	6m x 2m x 3m	Travel to site
Helicopter	1	11m x 4m x 2m	Travel to site
Flow meter	1	1.5m x 0.25m x 0.25m	Measure stream discharge
Stopwatch	1	0.2m x 0.2m x 0.1m	Measure sampling effort
GPS	1	0.25m x 0.1m x 0.1m	Locate/mark sites
Range Finder	1	0.2m x 0.2m x 0.05m	Measure distances
Tape Measure	1	0.25m x 0.25m x 0.05m	Measure stream properties
Camera	1	0.2m x 0.2m x 0.05m	Record site conditions
In-situ water quality meter	1	0.4m x 0.4m x 0.2m	Record in situ water quality parameters

Qanurittuq Urhuqyuaq unalu Qayangnaqtut Hunavaluit Aturninnga

Qanurittuq urhuqyuaq hunavaluit aturninnga:	Urhuqyuaq Qanurittuq	Qaffiuyut qattaryut	Qattaryuk Aktikkulaanga	Atauttimut Qaffiuyut	Ilanga	Qanuq Atuqtauniarmangaa
Aviation fuel	fuel	1	42	42	Gallons	Transport to and from sites
Gasoline	fuel	10	120	1200	Liters	Transport to and from site

Imaqmik Aturninnga

Ubluq qanuraaluk (m3)	Aturumayain imavaluin utiqittagaani qanuq	Atulirumayain imavaluin utiqittagani humi
0		

Iqqakuq

Ikkakunik Munakgiyauyunik

Havauhikhaq Hulilukaarut	Qanurittuq Iqqakut	Ihumagiyauyuq Qanuraaluktut Atuqtait	Qanuq Iqqakuurniarmangaa	Halummaqtirarnirutikhan piyutin
Researching	Ikulalimanngittun iqqakuuvaluin	Minimal	Daily waste (e.g. food and equipment packaging) will be packed out each day and disposed of at Agnico Eagle sites.	N/A

Avatiliriniqmut Ayurhautingit:

No materials are to be moved or removed during this project, so impacts are anticipated to be minimal.

Additional Information

SECTION A1: Project Info

SECTION A2: Allweather Road

SECTION A3: Winter Road

SECTION B1: Project Info

SECTION B2: Exploration Activity

SECTION B3: Geosciences

SECTION B4: Drilling

SECTION B5: Stripping

SECTION B6: Underground Activity

SECTION B7: Waste Rock

SECTION B8: Stockpiles

SECTION B9: Mine Development

SECTION B10: Geology

SECTION B11: Mine

SECTION B12: Mill

SECTION C1: Pits

SECTION D1: Facility

SECTION D2: Facility Construction

SECTION D3: Facility Operation

SECTION D4: Vessel Use

SECTION E1: Offshore Survey

SECTION E2: Nearshore Survey

SECTION E3: Vessel Use

SECTION F1: Site Cleanup

SECTION G1: Well Authorization

SECTION G2: Onland Exploration

SECTION G3: Offshore Exploration

SECTION G4: Rig

SECTION H1: Vessel Use

SECTION H2: Disposal At Sea

SECTION I1: Municipal Development

Qanurittuq Ittunik Avatinga: Avatingalluanga

Please refer to attached supporting document.

Qanurittuq Ittunik Avatinga: Inuuhimayunut Avatinga

Please refer to attached supporting document.

Qanurittuq Ittunik Avatinga: Inungit-maniliurutingit Avatinga

Please refer to attached supporting document.

Miscellaneous Project Information

N/A

Naunaiyainiq ukuninnga Ayurhautingit unalu Piumayaat Ikikliyuumiutinahuarutit

No impacts are anticipated

Tamatkiumayunik Ihuikgutivaktunik

N/A

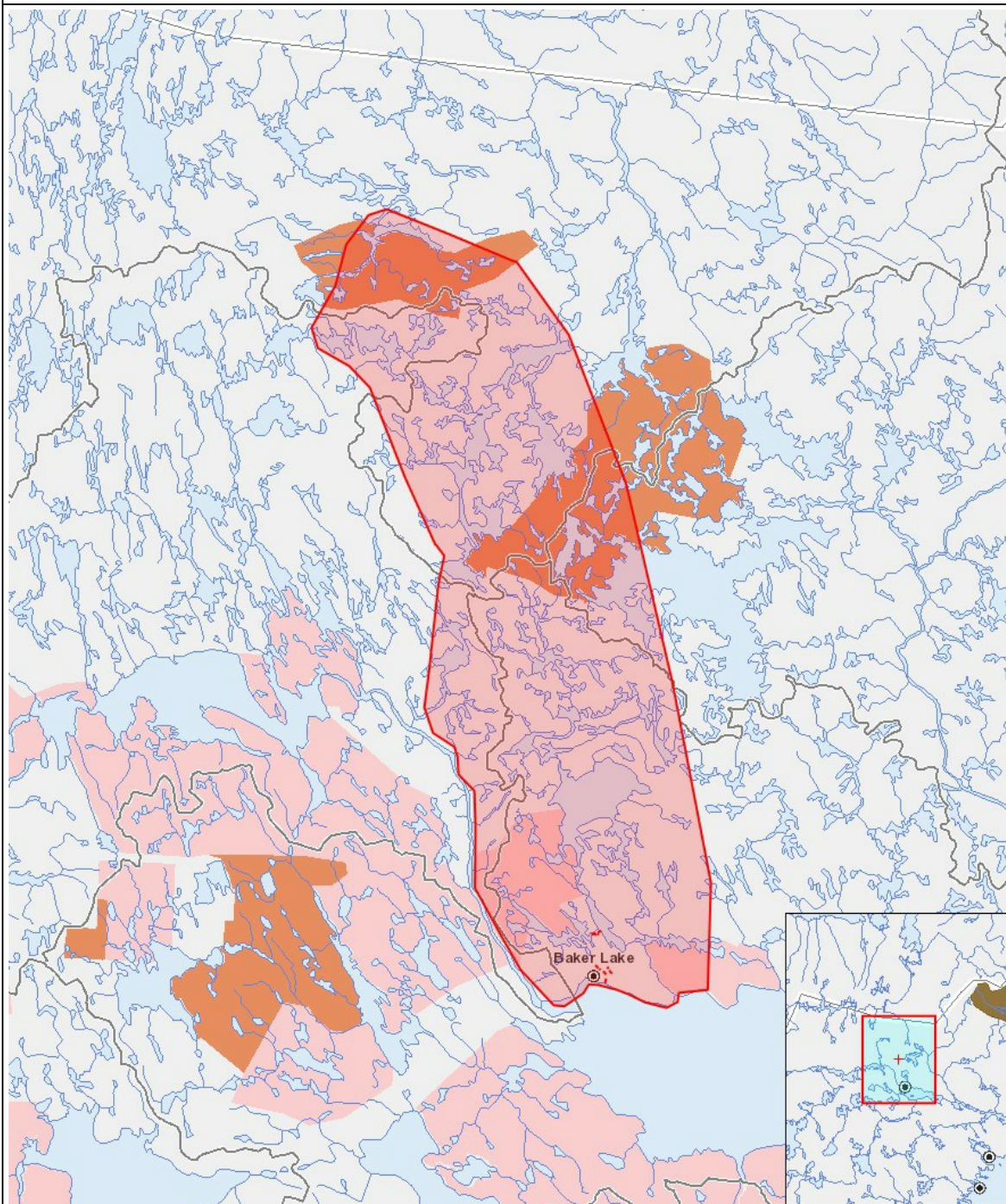
Impacts

Ilitariyauniq Avatiliriniqmut Ayurhautingit

	PHYSICAL	Designated environmental areas	Ground stability	Permafrost	Hydrology / Limnology	Water quality	Climate conditions	Eskers and other unique or fragile landscapes	Surface and bedrock geology	Sediment and soil quality	Tidal processes and bathymetry	Air quality	Noise levels	BIOLOGICAL	Vegetation	Wildlife, including habitat and migration patterns	Birds, including habitat and migration patterns	Aquatic species, incl. habitat and migration/spawning	Wildlife protected areas	SOCIO-ECONOMIC	Archaeological and cultural historic sites	Employment	Community wellness	Community infrastructure	Human health
Havakvinga	-	-	-	-	-	-	-	-	-	-	-	-	-	-	-	-	-	-	-	-	-	-	-	-	-
Aulapkaininnga																									
Researching	-	-	-	-	-	-	-	-	-	-	-	-	-	-	-	-	P	-	-	-	-	-	-	-	-
Piiqtauniq																									
-	-	-	-	-	-	-	-	-	-	-	-	-	-	-	-	-	-	-	-	-	-	-	-	-	-

(P = Nakuuyuq, N = Nakuungittut unalu mikhilimaittuq, M = Nakuungittut unalu mikhittaaqtuq, U = Naluyauyuq)

PROJECT MAP



LIST OF PROJECT GEOMETRIES:

- | | | |
|---|----------|---|
| 1 | polygon | Region encompassing wastewater system and potential reference systems |
| 2 | polyline | Wastewater system streams |
| 3 | polyline | R02 reference stream |