



$\gamma_b \Delta^c \dot{\bar{O}} \Pi \sigma^b \quad \Lambda_{C-} n \nabla^{\gamma_b \gamma_\sigma \nabla n \nabla^a L^a \sigma^b}$

[illegible]

▷ ΔΑΝΟΤ: N/A

[illegible]



ΛϵηΔηζ▷σΔ<sup>96</sup>▷<sup>c</sup>

ᐱᓯ	ᖃᓄᐃᑦᑐᓯᑦ ᐱᓕᓚᐊᖃᖅᓂᐊᖃᑦ	ᑭᑦᐃᑦ ᓄᐱᖅᐃᑦᓂ	ᑐᔨᐃᓴᑦᖃᑦ ᓄᐱᑦ ᖃᓄᖃ ᐊᑐᓴᐃᑦᐃᖃᑦ ᓯᓴᓴᓚᐊᖃᑦᓂᑦ	ᐃᑦᔨᖅᓂᑦᖃᖅᐱᐃᑦᑦᐃᖃᑦ ᐃᓄᖃᓄᑦ ᐱᔨᖃᑦᐃᖃᑦᓂᑦᐃᑦᓂᑦ ᑕᐃᑦᓯᓴᓂᑐᖃᐃᑦᖃᑐᖃᑦ	ᖃᓂᖅᓂᖃᑦᑦᖃᑦ ᓄᐱᓕᓯᓴᐃᔨᖃᑦ ᐊᓴᓴᑐ ᔨᑐᓴᓯᖃᑦᐱᐃᑦᓂᑦ ᓯᐱᓄᑦ
Region encompassing wastewater system and potential reference systems	Researching	Municipal	N/A	N/A	Wastewater treatment system is in the community of Baker Lake. Research conducted on land ranging in status, and includes municipal, Inuit owned surface and sub-surface, and crown land.

[illegible]

მეც რე <sup>ა</sup>	დ <sup>ა</sup>	ბა <sup>ა</sup> რე <sup>ა</sup>	რე <sup>ა</sup> ბა <sup>ა</sup> რე <sup>ა</sup>
Information is not available			

$\mathbb{C} \Delta^{\text{a}} \dot{\Gamma}^{\text{c}} \wedge \mathcal{J}^{\text{b}}_{\text{e}} \triangleright \dot{\mathcal{N}} \triangleleft^{\text{b}} \Gamma^{\text{b}} \mathbb{C} \triangleright \mathcal{L} \triangleleft^{\text{c}}$

$a^b r^c \Delta$   $\Lambda c_n d_n^e \Delta D \sigma d^{fb} J^c$   $n n f^g \omega^f:$

Kivalliq

$\epsilon \Delta t^{\alpha} j^c \wedge J_{\omega}^{\flat} e^D \dot{N}$      $d^{\flat} r^{\flat} C D P L \downarrow^c$

<p>                     ሲፈረም የሚገኝበት                      የፍቃድ ማግኘት ወይም                      ማረጋገጥ ያለበት                      የፍቃድ ማግኘት ወይም                      ማረጋገጥ ያለበት                      የፍቃድ ማግኘት ወይም                      ማረጋገጥ ያለበት                      የፍቃድ ማግኘት ወይም                      ማረጋገጥ ያለበት                 </p>	<p>                     የፍቃድ ማግኘት ወይም                      ማረጋገጥ ያለበት                      የፍቃድ ማግኘት ወይም                      ማረጋገጥ ያለበት                      የፍቃድ ማግኘት ወይም                      ማረጋገጥ ያለበት                      የፍቃድ ማግኘት ወይም                      ማረጋገጥ ያለበት                 </p>	<p>                     የፍቃድ ማግኘት ወይም                      ማረጋገጥ ያለበት                      የፍቃድ ማግኘት ወይም                      ማረጋገጥ ያለበት                      የፍቃድ ማግኘት ወይም                      ማረጋገጥ ያለበት                      የፍቃድ ማግኘት ወይም                      ማረጋገጥ ያለበት                 </p>	<p>                     የፍቃድ ማግኘት ወይም                      ማረጋገጥ ያለበት                      የፍቃድ ማግኘት ወይም                      ማረጋገጥ ያለበት                      የፍቃድ ማግኘት ወይም                      ማረጋገጥ ያለበት                      የፍቃድ ማግኘት ወይም                      ማረጋገጥ ያለበት                 </p>	<p>                     የፍቃድ ማግኘት ወይም                      ማረጋገጥ ያለበት                      የፍቃድ ማግኘት ወይም                      ማረጋገጥ ያለበት                      የፍቃድ ማግኘት ወይም                      ማረጋገጥ ያለበት                      የፍቃድ ማግኘት ወይም                      ማረጋገጥ ያለበት                 </p>
<p>                     የፍቃድ ማግኘት ወይም                      ማረጋገጥ ያለበት                      የፍቃድ ማግኘት ወይም                      ማረጋገጥ ያለበት                      የፍቃድ ማግኘት ወይም                      ማረጋገጥ ያለበት                      የፍቃድ ማግኘት ወይም                      ማረጋገጥ ያለበት                 </p>	<p>                     Applied for                      exemption                 </p>	<p>                     Applied, Decision                      Pending                 </p>	<p>                     2018-07-04                 </p>	
<p>                     ማረጋገጥ ያለበት                      የፍቃድ ማግኘት ወይም                      ማረጋገጥ ያለበት                      የፍቃድ ማግኘት ወይም                      ማረጋገጥ ያለበት                      የፍቃድ ማግኘት ወይም                      ማረጋገጥ ያለበት                 </p>	<p>                     Positive conformity                      determination. Sent                      to NIRB for                      screening.                 </p>	<p>                     Applied, Decision                      Pending                 </p>	<p>                     2018-06-18                 </p>	

### Project transportation types

<b>Transportation Type</b>	<b>Access Method</b>	<b>Length of Use</b>
Air	Helicopter use will be dependent on site access, and is anticipated to be minimal	
Water	Travel by boat may be required , but is anticipated to be infrequent	
Land	Travel by truck will occur along the Agnico Eagle all weather access road from Baker Lake to Amaruq Camp. Travel by foot is also anticipated.	

### Project accomodation types

መረጃ

◁ ୨୦୧୬,

Λ<sup>9</sup>d<sup>c</sup> d<sup>a</sup>r<sup>z</sup><sup>56</sup> d<sup>56</sup>CdσD<sup>4</sup>z<sup>56</sup> Δ<sup>c</sup><sub>56</sub>r<sup>56</sup>Dn<sup>56</sup>r<sup>c</sup> ΔjCΔ<sup>c</sup>, Γ<sup>c</sup>→dPñ<sup>c</sup>, <sup>56</sup>b<sup>56</sup>LCj<sup>56</sup>, μεr<sup>56</sup>D<sup>c</sup> d<sup>a</sup>r<sup>56</sup>r<sup>c</sup>→

[illegible]

ΔL<sup>εb</sup> ΔD<sup>εb</sup> CD<sup>εb</sup> ΔL<sup>εb</sup> ΔD<sup>εb</sup>

$\mathbb{D}^c \supset \mathbb{C} \mathbb{I}^{\mathbb{F}_b} \mathbb{A} \mathbb{D}^{\mathbb{F}_b} \mathbb{C} \mathbb{D} \sigma \mathbb{A}^{\mathbb{F}_b} \mathbb{D}^{\mathbb{F}_b}$	$\mathbb{F}_b \mathbb{D}^{\mathbb{F}_b} \mathbb{A} \mathbb{F}^{\mathbb{F}_b} \mathbb{C}^{\mathbb{F}_b} \mathbb{C}^{\mathbb{F}_b} \sigma \mathbb{A}^{\mathbb{F}_b} \mathbb{C}^{\mathbb{F}_b}$	$\mathbb{A} \mathbb{P}^{\mathbb{C}} \mathbb{A} \mathbb{F}^{\mathbb{F}_b} \mathbb{C}^{\mathbb{F}_b} \mathbb{C}^{\mathbb{F}_b} \sigma \mathbb{A}^{\mathbb{F}_b} \mathbb{C}^{\mathbb{F}_b}$
0		

$\triangleleft^b C d^c$ 
$$\Delta^b C j_c \sim \sigma \Delta^q \sigma^q$$

<b>ᐱᑦᓕᓂᐳᓚᔭᐅᐳᒪᐳᓯᑦ</b> <b>ᐱᑦᓕᓂᐳᓚᔭᐅᓄᐳᑦᓇᓴᑦ</b>	<b>ᑦᓴᓄᐃᑦᓇᓴᑦ</b> <b>ᐳᑦᑕᐳᑦᓴᑦ</b>	<b>ᑦᓴᓄᐈᑦ ᐳᑦᑕᐳᑦ</b> <b>ᓴᑦᓴᐅᐳᓄᐳᑦᓇᓴᑦᓇᓴᑦᓇᓴᑦ</b>	<b>ᑦᓴᓄᓴᑦ</b> <b>ᐳᑦᑕᑦᓴᐳᓄᓄᐳᑦᓇᓴᑦ</b>	<b>ᓴᓴᒪᑦᓴᑦᓴᐅᐈᑦᓴᑦᓴᑦᓴᑦᓴᑦᓴᑦ</b>
Researching	ᐳᑦᑕᐳᑦ ᐃᐳᐳᑦᑕᐳᐳᑦᓴᑦᓴᑦᓴᑦᓴᑦ	Minimal	Daily waste (e.g. food and equipment packaging) will be packed out each day and disposed of at Agnico Eagle sites.	N/A

$$4^n n! D^n C \div C^n \quad 4^b D^{f_b} C D^r L^r C$$

No materials are to be moved or removed during this project, so impacts are anticipated to be minimal.

# **Additional Information**

**SECTION A1: Project Info**

**SECTION A2: Allweather Road**

**SECTION A3: Winter Road**

**SECTION B1: Project Info**

**SECTION B2: Exploration Activity**

**SECTION B3: Geosciences**

**SECTION B4: Drilling**

**SECTION B5: Stripping**

**SECTION B6: Underground Activity**

**SECTION B7: Waste Rock**

**SECTION B8: Stockpiles**

**SECTION B9: Mine Development**

**SECTION B10: Geology**

**SECTION B11: Mine**

**SECTION B12: Mill**

**SECTION C1: Pits**

**SECTION D1: Facility**

**SECTION D2: Facility Construction**

**SECTION D3: Facility Operation**

**SECTION D4: Vessel Use**

**SECTION E1: Offshore Survey**

**SECTION E2: Nearshore Survey**

**SECTION E3: Vessel Use**



**SECTION F1: Site Cleanup**

**SECTION G1: Well Authorization**

**SECTION G2: Onland Exploration**

**SECTION G3: Offshore Exploration**

**SECTION G4: Rig**

**SECTION H1: Vessel Use**

**SECTION H2: Disposal At Sea**

**SECTION I1: Municipal Development**

ᐱᓐᓇ ᐱᓕᓂᐅᓐ ᓃᓐᓇᐅᓐᓇᓂᓐᓇᓂᓐ: ᓐᓇᐅᓐ ᓃᓐᓇᐅᓐᓇᓂᓐ

Please refer to attached supporting document.

ᐱᓐᓇ ᐱᓕᓂᐅᓐ ᓃᓐᓇᐅᓐᓇᓂᓐᓇᓂᓐ: ᐅᐱᓐᓇᓂᓐᓇᓂᓐ

Please refer to attached supporting document.

ᐱᓐᓇ ᐱᓕᓂᐅᓐ ᓃᓐᓇᐅᓐᓇᓂᓐᓇᓂᓐ: ᐅᓐᓇᓂᓐᓇᓂᓐᓇᓂᓐᓇᓂᓐᓇᓂᓐᓇᓂᓐᓇᓂᓐ

Please refer to attached supporting document.

**Miscellaneous Project Information**

N/A

ᓐᓇᓐᓇᓂᓐᓇᓂᓐᓇᓂᓐᓇᓂᓐ ᐱᓐᓇᓂᓐᓇᓂᓐᓇᓂᓐ ᓃᓐᓇᐅᓐᓇᓂᓐᓇᓂᓐ ᐅᓐᓇᓂᓐᓇᓂᓐᓇᓂᓐᓇᓂᓐ

No impacts are anticipated

**Cumulative Effects**

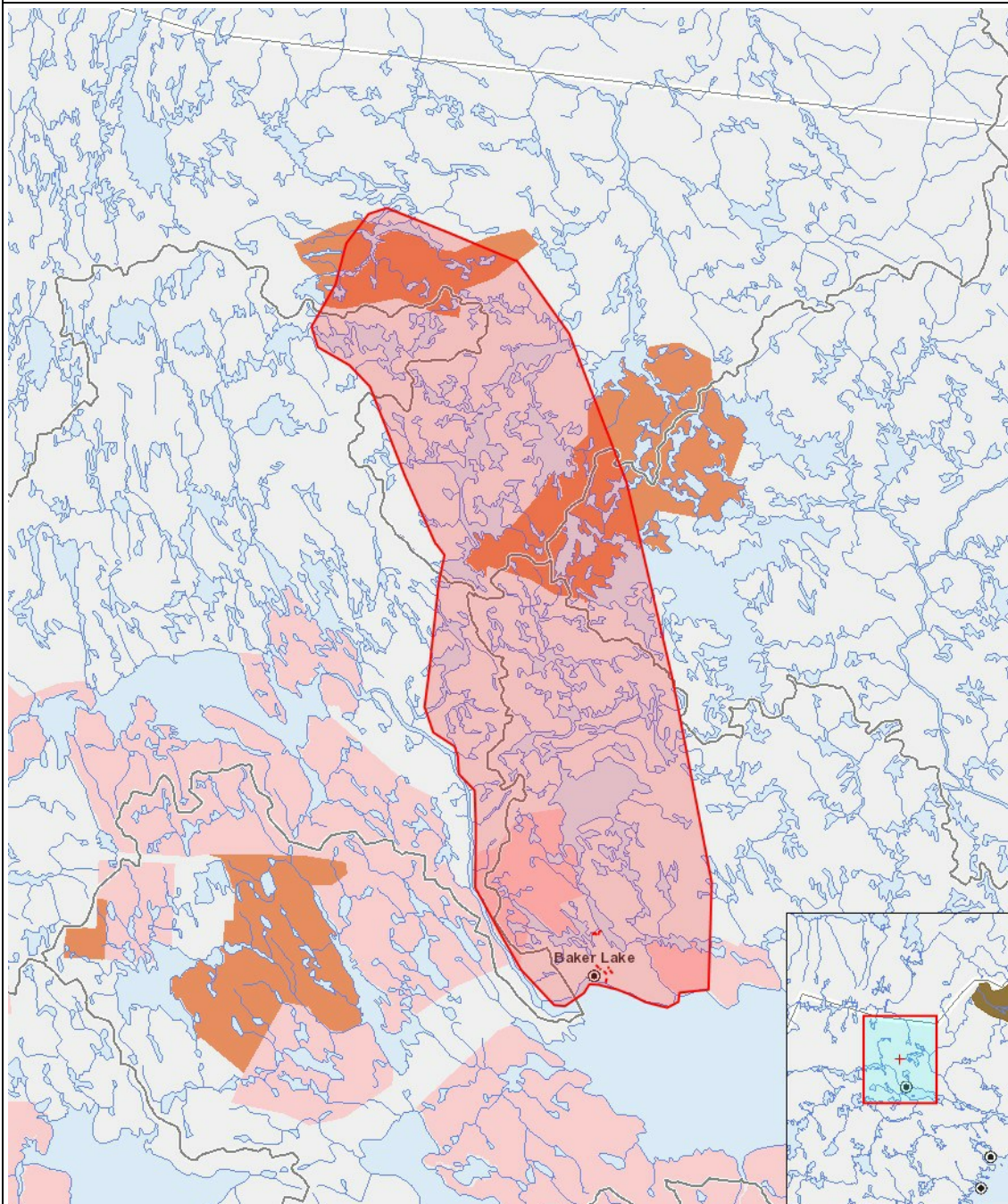
N/A

## Impacts

$\mathcal{L}(\mathcal{A}) \subseteq \mathcal{L}(\mathcal{B})$

[illegible]
$$(P = \langle \text{b d} \rangle \text{a p n} \langle \text{a}^{\text{a}} \text{a}^{\text{b}} \rangle^{\text{c}}, N = \langle \text{b d} \rangle \text{a f' r} \langle \text{c d} \rangle \langle \text{a}^{\text{a}} \text{a}^{\text{b}} \rangle^{\text{c}} \langle \text{c d} \rangle \text{f' r} \langle \text{a}^{\text{a}} \text{a}^{\text{b}} \rangle^{\text{c}} \rangle, M = \langle \text{b d} \rangle \text{a f' r} \langle \text{c d} \rangle \langle \text{a}^{\text{a}} \text{a}^{\text{b}} \rangle^{\text{c}} \langle \text{c d} \rangle \text{f' r} \langle \text{a}^{\text{a}} \text{a}^{\text{b}} \rangle^{\text{c}} \rangle, U = \langle \text{b d} \rangle \text{a l} \langle \text{a}^{\text{a}} \text{a}^{\text{b}} \rangle^{\text{c}} \rangle)$$

## PROJECT MAP



### LIST OF PROJECT GEOMETRIES:

- 1 polygon Region encompassing wastewater system and potential reference systems
- 2 polyline Wastewater system streams
- 3 polyline R02 reference stream