



$\gamma_b \Delta^c \dot{\gamma} \cap \sigma^b \quad \wedge c_n \nabla^{\gamma_b} \gamma \sigma \nabla^n \nabla^a l^a \sigma^b$

▷ ΔΛΠΠ<sup>c</sup>: n/a

Inuinnaqtun: n/a

Personnel on site: 4

Days on site: 4

Total Person days: 16

Operations Phase: from 2018-07-28 to 2018-08-26

$\Lambda \subset \mathbb{N} \triangleleft \mathbb{N} \hookrightarrow \Sigma \triangleleft^{\text{fb}} \mathcal{C}$

[illegible][illegible]

മലയാളം	English	മലയാളം	English
Information is not available			

$\Delta^{\alpha} \Gamma^{\beta} \Lambda^{\gamma} \Sigma^{\delta}$

$a^{\dagger}r^{\dagger}q^{\dagger}\sigma^{\dagger} \Lambda_{\tau} r^{\dagger} q^{\dagger} \Delta \sigma^{\dagger} \gamma^{\dagger} \gamma^{\dagger}$

## Transboundary

## Kitikmeot

North Baffin

[illegible][illegible]

## Project transportation types

Transportation Type	Transportation Mode	Length of Use
Water	recreational yacht	

## Project accomodation types

◁ ୨୦୧୬,

◀▷↳◀<sup>96</sup>▷<sup>96</sup>

Λ<sup>9</sup>d<sup>c</sup> d<sup>a</sup>b<sup>r</sup>z<sup>s</sup> b<sup>d</sup><sub>56</sub>cdσd<sup>y</sup>z<sup>s</sup> Δc<sup>s</sup>b<sup>r</sup>d<sup>n</sup>o<sup>r</sup>c ΔjCΔ<sup>c</sup>, Γ<sup>c</sup>o<sup>d</sup>p<sup>n</sup>c, <sup>s</sup>b<sup>s</sup>lCj<sup>s</sup>, με<sup>r</sup>d<sup>c</sup> d<sup>r</sup><sup>s</sup>r<sup>c</sup>o<sup>c</sup>

ᐃᐃᐃᐃᐃ ᐃᐃᐃᐃᐃ ᐃᐃᐃᐃᐃᐃᐃᐃᐃᐃ ᐃᐃᐃᐃᐃᐃᐃᐃᐃᐃ	ᐃᐃᐃᐃᐃᐃᐃᐃᐃᐃ	ᐃᐃᐃᐃᐃᐃᐃᐃᐃᐃ - ᐃᐃᐃᐃᐃᐃᐃᐃᐃᐃ	ᐃᐃᐃᐃᐃ ᐃᐃᐃᐃᐃᐃᐃᐃᐃᐃ
yacht	1	39 feet	cruise, research

$\partial \partial \nabla \rho_{\mu} \rightarrow J$      $D^{\epsilon_b} \rho^b \Delta^c$      $d^c C_{\alpha}{}^{\epsilon_b} D^{\epsilon_b} C^c_{\phantom{c}} \rightarrow d D^{\epsilon_b} C D \sigma d^{\epsilon_b} \sigma^{\epsilon_b} \rho^c$

[illegible]

ΔL<sup>9b</sup> ΔD<sup>9b</sup> CDΔL<sup>9b</sup> D<sup>9b</sup>

$\Delta^c \rightarrow C\bar{L}^{qb} \rightarrow D^{qb}CD_{\sigma}\bar{A}^{qb}D^{qb}$	$^{qb}\omega^{qb} \Delta\Gamma^{qb}C^{qb}C^q\sigma\bar{A}^{qb}<^c$	$aP^c \Delta\Gamma^{qb}C^{qb}C^q\sigma\bar{A}^{qb}<^c$
1	Carry drinking and washing water needs from Greenland	Greenland

## ᐃᑲᑕᑦ

ᐃᑲᑕᑦ ᐃᑲᑕᑦ ᐃᑲᑕᑦ

ᐃᑲᑕᑦ ᐃᑲᑕᑦ ᐃᑲᑕᑦ	ᐃᑲᑕᑦ ᐃᑲᑕᑦ ᐃᑲᑕᑦ	ᐃᑲᑕᑦ ᐃᑲᑕᑦ ᐃᑲᑕᑦ	ᐃᑲᑕᑦ ᐃᑲᑕᑦ ᐃᑲᑕᑦ	ᐃᑲᑕᑦ ᐃᑲᑕᑦ ᐃᑲᑕᑦ
Marine Based Activities	Other, kitchen rubbish	2 bags	leave stowed in vessel	n/a

## ᐃᑲᑕᑦ ᐃᑲᑕᑦ ᐃᑲᑕᑦ

More collaborative research discoveries between Canadian agency and academic researchers with US academic researchers.

# **Additional Information**

**SECTION A1: Project Info**

**SECTION A2: Allweather Road**

**SECTION A3: Winter Road**

**SECTION B1: Project Info**

**SECTION B2: Exploration Activity**

**SECTION B3: Geosciences**

**SECTION B4: Drilling**

**SECTION B5: Stripping**

**SECTION B6: Underground Activity**

**SECTION B7: Waste Rock**

**SECTION B8: Stockpiles**

**SECTION B9: Mine Development**

**SECTION B10: Geology**

**SECTION B11: Mine**

**SECTION B12: Mill**

**SECTION C1: Pits**

**SECTION D1: Facility**

**SECTION D2: Facility Construction**

**SECTION D3: Facility Operation**

**SECTION D4: Vessel Use**

**SECTION E1: Offshore Survey**

**SECTION E2: Nearshore Survey**

### SECTION E3: Vessel Use

## SECTION F1: Site Cleanup

## SECTION G1: Well Authorization

## SECTION G2: Onland Exploration

## SECTION G3: Offshore Exploration

## SECTION G4: Rig

## SECTION H1: Vessel Use

Survey observations regarding the ice and ocean physical and environmental conditions in the NW Passage and Crocker Bay.

## SECTION H2: Disposal At Sea

## SECTION 11: Municipal Development

**ᐱᓪᓇ ᐃᑦᐅᐅᑦ ᖃᓄᐃᑦ)ᑦᑕᓚᐅᓂᖅ: ᓄᓇᐅᑦ ᖃᓄᐃᑦ)ᓂᖅ**

[illegible]

**ᐱᓪᓇ ᐃᑦᑎᐅᑦ ᖃᓄᐃᑦ)ᑕᓚᓂᐅᓂᖅ: ᐃᓄᑕᓂᓂᖅᐱᓪᓴᐅᑦ-ᐱᑦᑕᐃᑦᑕᓂᓂᖅᐱᓪᓴᐅᑦ**

### Miscellaneous Project Information

[illegible]

## Cumulative Effects

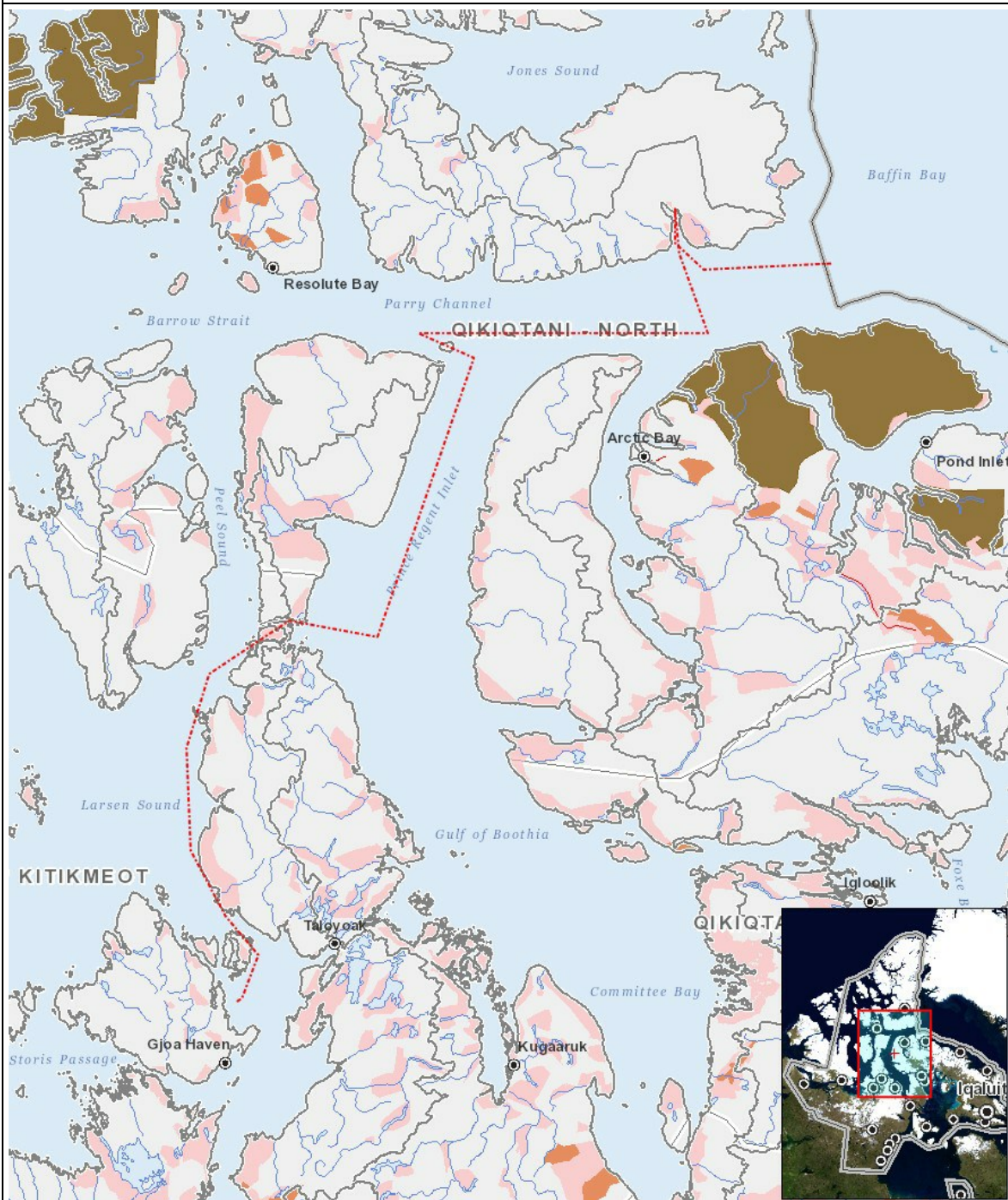


## Impacts

$\omega \rightarrow \omega \Delta^{96} C D \sigma^{96} r^C$      $\Delta^{96} C D \sigma^{96} r^C$      $\Delta^{96} C D \sigma^{96} r^C$

[illegible]
$$(P = \langle b \rangle \dot{a} \dot{p} \cap \dot{r}^a \dot{q}^{fb})^c, N = \langle b \rangle \dot{p} \dot{r}^a \dot{r}^c \dot{q}^{fb})^c \langle \dot{c} \dot{d} \dot{r}^a \dot{r}^{fb} \rangle^{fb} \langle \dot{c} \dot{d} \dot{r}^a \dot{q}^{fc} \rangle^c, M = \langle b \rangle \dot{p} \dot{r}^a \dot{r}^c \dot{q}^{fb})^c \langle \dot{c} \dot{d} \dot{r}^a \dot{r}^{fb} \rangle^{fb} \langle \dot{c} \dot{d} \dot{r}^a \dot{q}^{fb} \rangle^c, U = \langle b \rangle \dot{r}^a \dot{q}^{fc} \rangle^{fb})$$

## PROJECT MAP



## LIST OF PROJECT GEOMETRIES:

- 1 polyline Transit through Northwest Passage with survey in Crocker Bay