

$\gamma_b \Delta^c \dot{\gamma} \cap \sigma^b \quad \wedge c_n \nabla^{\gamma_b} \gamma \sigma \nabla^n \nabla^a l^a \sigma^b$

▷ ΔΛΠΠ^c: n/a

Inuinnaqtun: n/a

Personnel on site: 4

Days on site: 4

Total Person days: 16

Operations Phase: from 2018-07-28 to 2018-08-26

$\Lambda \subset \mathbb{N} \triangleleft \mathbb{N} \hookrightarrow \Sigma \triangleleft {}^{\epsilon_b}\mathcal{C}$

[illegible]

መረጥፋት ለረዕይናቸው ምረቃ ለሰራተኛቸው ለሰራተኛቸው ለሰራተኛቸው ለሰራተኛቸው

မေတ္တရီ	၄၈	ပတ်သက်မှုရှိမှု	အချက်အလက်
Information is not available			

[illegible]

$a^{\dagger}r d^{q_1} r^{a_2} \sigma^b \wedge c_{-n} d_{-n} e^{\delta} \Delta D \sigma d^{q_b} J^c$ በበኛው ጋር፡

Transboundary

Kitikmeot

North Baffin

$\Delta^{\alpha} \Gamma^{\beta} \Lambda^{\gamma} \Sigma^{\delta}$

[illegible]

Project transportation types

Transportation Type	Transportation Mode	Length of Use
Water	recreational yacht	

Project accomodation types

◁ ୨୦୧୬,

◁▷↳σ◁⁹⁶▷⁹⁶

[illegible]

ᐃᓕᑦᑲ ᐱᓂᑦ ᐃᑐᒪᐅᓂᐃᓕᑦᑲ ᓖᑲᓄᐃᑦᑐᓂᓕᑲ	ᓖᑲᑦᑲᐅᑦᑦ	ᐃᓕᑦᑲᓂᓖᑦᑲᑦ - >ᓖᑲᑐᓂᓖᑦᑲᑦ	ᑭᓇᑯᑦ ᐃᑐᒪᐅᓂᐃᓕᑦ<
yacht	1	39 feet	cruise, research

[illegible]

$\frac{L}{m^3}$	m^3	L	m^3	L	m^3	L
Gasoline	fuel	3	300	900	Gallons	inboard engine when needed

ΔL⁹⁶ ΔC⁹⁶ CΔ⁹⁶ ΔL⁹⁶ ΔC⁹⁶

[illegible]

$\triangleleft^b C d^c$
$$\Delta^b C d_C \sim \sigma \Delta^a \sigma^a$$

$\Lambda \subset \Delta$	Δ^c	Δ^c	Δ^c	Δ^c
Marine Based Activities	Other, kitchen rubbish	2 bags	leave stowed in vessel	n/a

$$4^a 6^b 7^c 8^d 9^e 10^f 11^g 12^h 13^i 14^j 15^k 16^l 17^m 18^n 19^o 20^p 21^q 22^r 23^s 24^t 25^u 26^v 27^w 28^x 29^y 30^z$$

More collaborative research discoveries between Canadian agency and academic researchers with US academic researchers.

Additional Information

SECTION A1: Project Info

SECTION A2: Allweather Road

SECTION A3: Winter Road

SECTION B1: Project Info

SECTION B2: Exploration Activity

SECTION B3: Geosciences

SECTION B4: Drilling

SECTION B5: Stripping

SECTION B6: Underground Activity

SECTION B7: Waste Rock

SECTION B8: Stockpiles

SECTION B9: Mine Development

SECTION B10: Geology

SECTION B11: Mine

SECTION B12: Mill

SECTION C1: Pits

SECTION D1: Facility

SECTION D2: Facility Construction

SECTION D3: Facility Operation

SECTION D4: Vessel Use

SECTION E1: Offshore Survey

SECTION E2: Nearshore Survey

SECTION E3: Vessel Use

SECTION F1: Site Cleanup

SECTION G1: Well Authorization

SECTION G2: Onland Exploration

SECTION G3: Offshore Exploration

SECTION G4: Rig

SECTION H1: Vessel Use

Survey observations regarding the ice and ocean physical and environmental conditions in the NW Passage and Crocker Bay.

SECTION H2: Disposal At Sea

SECTION I1: Municipal Development

ᐱᓪᓇ ᐱᓕᓂᐅᓪᓕ ᖃᓄᐃᓪᓕᓕᓂᐅᓂᓪᓂᐱ: ᓄᓇᐅᓪᓕ ᖃᓄᐃᓪᓕᓂᓪᓂᐱ

ᐱᓪᓇ ᐱᓕᓂᐅᓪᓕ ᖃᓄᐃᓪᓕᓕᓂᐅᓂᓪᓂᐱ: ᐅᐱᓪᓂᐱᓪᓂᐱᓪᓂᐱ

ᐱᓪᓇ ᐱᓕᓂᐅᓪᓕ ᖃᓄᐃᓪᓕᓕᓂᐅᓂᓪᓂᐱ: ᐃᓄᓕᓂᓪᓂᐱᓪᓂᐱᓪᓂᐱ-ᐱᓕᓕᓂᐅᓂᓪᓂᐱᓪᓂᐱ

Miscellaneous Project Information

7/12/2018 Additional details request: As the Canadian vessel approaches the Northwest Passage the Canadian Captain will assess the ice conditions to determine if the 2 Americans can be checked into the country in a navigable open port. If conditions do not permit stopping in Pond Inlet then the Canadian Captain will call the proper authorities to provide arrival Passport information and details for checking in the 2 Americans. All aboard are familiar with this process. The 2 Americans are planned to depart from Gjoa Haven and fly back to the US around the 25th of August. If ice conditions do not allow the 2 Americans may depart from a different ice free harbor town such as Resolute or Pond Inlet. The two Canadians will continue on through the Northwest Passage keeping to the Canadian Coast Guard mandatory 24 hour position check in and departure from Canadian waters. The two Canadians continue through the Northwest Passage to International waters and then Alaska.

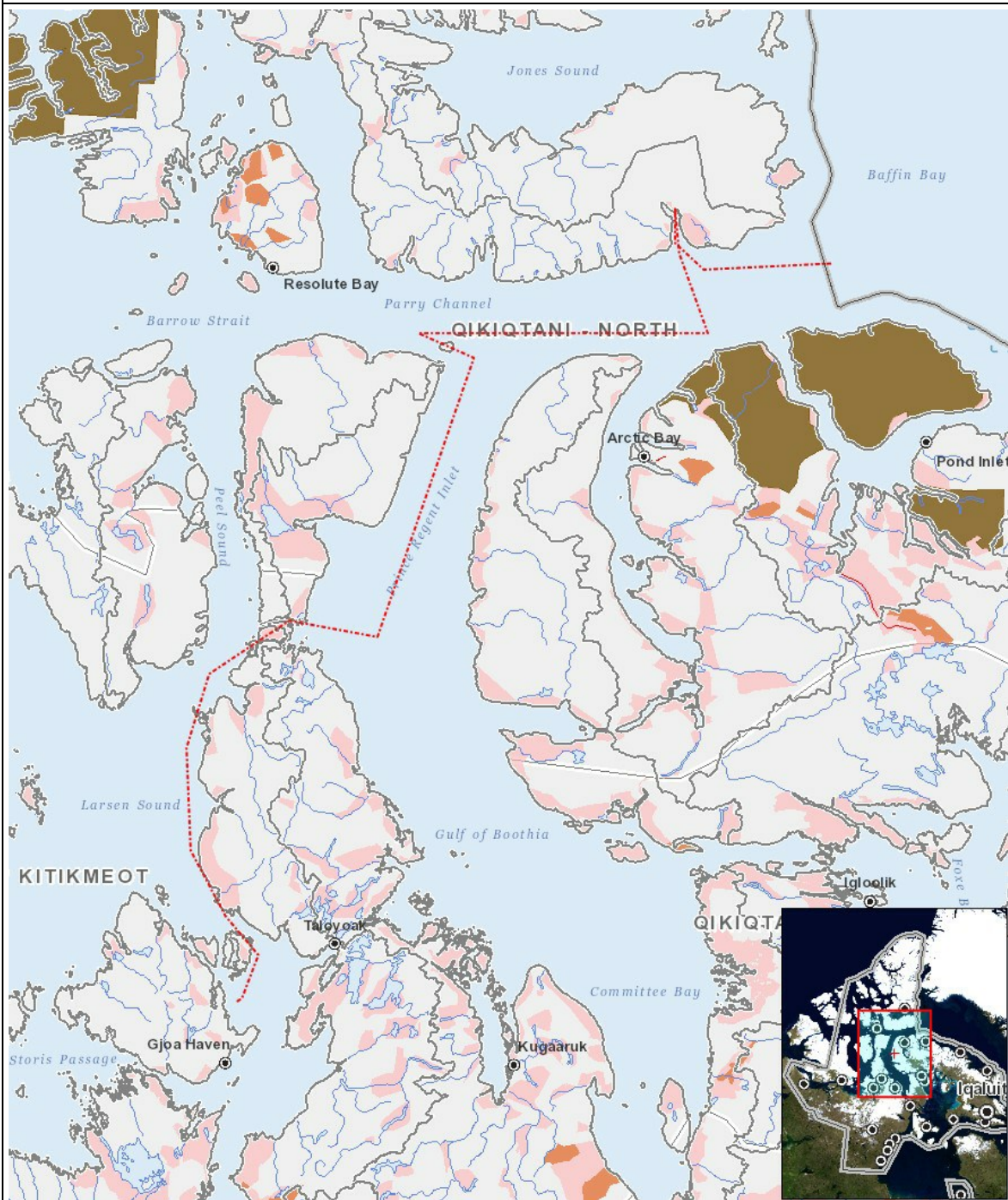
ᓇᓄᓇᐃᓪᓂᐱᓪᓂᐱᓪᓂᐱ ᐱᓪᓂᐱᓪᓂᐱᓪᓂᐱ ᖃᓄᐃᓪᓕᓂᓪᓂᐱ ᓕᓕᐅᓂᓪᓂᐱᓪᓂᐱᓪᓂᐱ

Cumulative Effects

Impacts

[illegible][illegible]
$$(P = \langle b \rangle \dot{a} \dot{p} \cap \dot{r}^a \dot{q}^b \rangle^c, N = \langle b \rangle \dot{p}^b \dot{r} \langle \dot{c} \dot{d} \dot{r}^a \dot{q}^b \rangle^c \langle \dot{c} \dot{d} \dot{r}^b \dot{r}^b \rangle^b \langle \dot{c} \dot{d} \dot{r}^a \dot{q}^b \rangle^c \rangle^c, M = \langle b \rangle \dot{p}^b \dot{r} \langle \dot{c} \dot{d} \dot{r}^a \dot{q}^b \rangle^c \langle \dot{c} \dot{d} \dot{r}^b \dot{r}^b \rangle^b \langle \dot{c} \dot{d} \dot{r}^a \dot{q}^b \rangle^c \rangle^c, U = \langle b \rangle \dot{p} \dot{r} \dot{r}^a \dot{q}^b \rangle^c \rangle^b)$$

PROJECT MAP



LIST OF PROJECT GEOMETRIES:

- 1 polyline Transit through Northwest Passage with survey in Crocker Bay