



NIRB Uuktuutinga Ihivriughikhamut #125364

Crocker Bay Study and NW Passage to Gjoa Haven

Uuktuutinga Qanurittuq: New

Havaap Qanurittunia: Scientific Research

Uuktuutinga Ublua: 6/27/2018 10:46:41 PM

Period of operation: from 0001-01-01 to 0001-01-01

Piumayaat Angirutinga: from 0001-01-01 to 0001-01-01

Havauhikhaq Ikayuqtinga: Nicole Trenholm
990 Awald Rd
Annapolis md 21403
United States
Hivayautit Nampanga:: 2152084464, Kayumiktukkut Nampanga::

QANURITTUT

Tukihiannaqtunik havaariyaumayumik uqauhiyun

Qablunaatitut: Marine Based Scientific Research: This is a low impact study using a vessel of opportunity. The research group is made up of 2 University graduate students and two Canadian pleasure yacht adventurers. The total voyage is from July 28 to August 26, 2018. The work involves a 4 day stop at Croker Bay in a 40 sailing boat for bathymetric & oceanographic surveys. Cruise ends for 2 students at Gjoa Haven, where they will fly back to the US, while Canadian vessel will proceed through the passage. Alternative fly out locations includes Pond Inlet and Resolute. Location: Qikiqtani Region [Croker Bay and Northwest Passage Transit]

Uiviititut: n/a

[illegible]

Inuinnaqtun: n/a

Personnel

Personnel on site: 4

Days on site: 4

Total Person days: 16

Operations Phase: from 2018-07-28 to 2018-08-26

Hulilukaarutit

Inigiya	Hulilukaarut Qanurittuq	Nunannga Qanurittaakhaanik	Initurlinga qanuritpa	Initurlinga utuqqarnitat unaluuniit Ingilraaqnitat Uyarannguqtut akhuurninnga	Qanitqiyauyuq qanitqiamut nunallaat kitulluuniit ahiruqtaliyainnit nuna
Transit through Northwest Passage with survey in Crocker Bay	Marine Based Activities	Marine	N/A previously surveyed bay	N/A	Resolute, Pond Inlet and Gjoa Haven

Nunaliin Ilauyun, Aviktuqhimayuniitunullu Ikayuuhiarunguyun

Nunauyuq	Atia	Timiuyuq	Upluani Uqaqatigiyaungmata
Information is not available			

Angiuttauvaktunik

Naunaiqlugu nunanga talvani havauhikhaq ittuq:

Transboundary
Kitikmeot
North Baffin

Angiuttauvaktunik

Munariniqmut Ayuittiaqtuq	Angirutinga Qanurittuq	Tadja Qanurittaakhaanik	Ublua Tuniyauyuq/Uuktuqtuq	Umikvikhaa Ublua
Nunavunmi Ihivriuqniqmut Timiqutigiyanga	NPC No 148838	Active	2018-06-19	2018-08-28

Project transportation types

Transportation Type	Qanuq Atuqtauniarmangaa	Length of Use
Water	recreational yacht	

Project accomodation types

Alaanut,

Ihuaqutivaluin Atuqtauyukhan

Hanalrutit atuqtaunahuat (ukuallu ikuutat, pampiutainnik, tingmitinik, akhaluutinik, hunaluuniit)

Hanalrutit Qanurittuq	Qaffiuyut	Aktikkulaanga – Qanurittullu	Qanuq Atuqtauniarmangaa
yacht	1	39 feet	cruise, research

Qanurittuq Urhuqyuaq unalu Qayangnaqtut Hunavaluit Aturninnga

Qanurittuq urhuqyuaq hunavaluit aturninnga:	Urhuqyuaq Qanurittuq	Qaffiuyut qattaryut	Qattaryuk Aktikkulaanga	Atauttimut Qaffiuyut	Ilanga	Qanuq Atuqtauniarmangaa
Gasoline	fuel	3	300	900	Gallons	inboard engine when needed

Imaqmik Aturninnga

Ubluq qanuraaluk (m3)	Aturumayain imavaluin utiqtittagaani qanuq	Atulirumayain imavaluin utiqtittagani humi
1	Carry drinking and washing water needs from Greenland	Greenland

Iqqakuq

Ikkakunik Munakgiyauyunik

Havauhikhaq Hulilukaarut	Qanurittuq Iqqakut	Ihumagiyauyuq Qanuraaluktut Atuqtait	Qanuq Iqqakuurniarmangaa	Halummaqtirarnirutikhan piyutin
Marine Based Activities	Other, kitchen rubbish	2 bags	leave stowed in vessel	n/a

Avatiliriniqmut Ayurhautingit:

More collaborative research discoveries between Canadian agency and academic researchers with US academic researchers.

Additional Information

SECTION A1: Project Info

SECTION A2: Allweather Road

SECTION A3: Winter Road

SECTION B1: Project Info

SECTION B2: Exploration Activity

SECTION B3: Geosciences

SECTION B4: Drilling

SECTION B5: Stripping

SECTION B6: Underground Activity

SECTION B7: Waste Rock

SECTION B8: Stockpiles

SECTION B9: Mine Development

SECTION B10: Geology

SECTION B11: Mine

SECTION B12: Mill

SECTION C1: Pits

SECTION D1: Facility

SECTION D2: Facility Construction

SECTION D3: Facility Operation

SECTION D4: Vessel Use

SECTION E1: Offshore Survey

SECTION E2: Nearshore Survey

SECTION E3: Vessel Use

SECTION F1: Site Cleanup

SECTION G1: Well Authorization

SECTION G2: Onland Exploration

SECTION G3: Offshore Exploration

SECTION G4: Rig

SECTION H1: Vessel Use

Survey observations regarding the ice and ocean physical and environmental conditions in the NW Passage and Crocker Bay.

SECTION H2: Disposal At Sea

SECTION I1: Municipal Development

Qanurittuq Ittunik Avatinga: Avatingalluanga

Qanurittuq Ittunik Avatinga: Inuuhimayunut Avatinga

Qanurittuq Ittunik Avatinga: Inungit-maniliurutingit Avatinga

Miscellaneous Project Information

7/12/2018 Additional details request: As the Canadian vessel approaches the Northwest Passage the Canadian Captain will assess the ice conditions to determine if the 2 Americans can be checked into the country in a navigable open port. If conditions do not permit stopping in Pond Inlet then the Canadian Captain will call the proper authorities to provide arrival Passport information and details for checking in the 2 Americans. All aboard are familiar with this process. The 2 Americans are planned to depart from Gjoa Haven and fly back to the US around the 25th of August. If ice conditions do not allow the 2 Americans may depart from a different ice free harbor town such as Resolute or Pond Inlet. The two Canadians will continue on through the Northwest Passage keeping to the Canadian Coast Guard mandatory 24 hour position check in and departure from Canadian waters. The two Canadians continue through the Northwest Passage to International waters and then Alaska.

Naunaiyainiq ukuninnga Ayurhautingit unalu Piumayaat Ikiikliyuumiutinahuarutit

Tamatkiumayunik Ihuikgutivaktunik

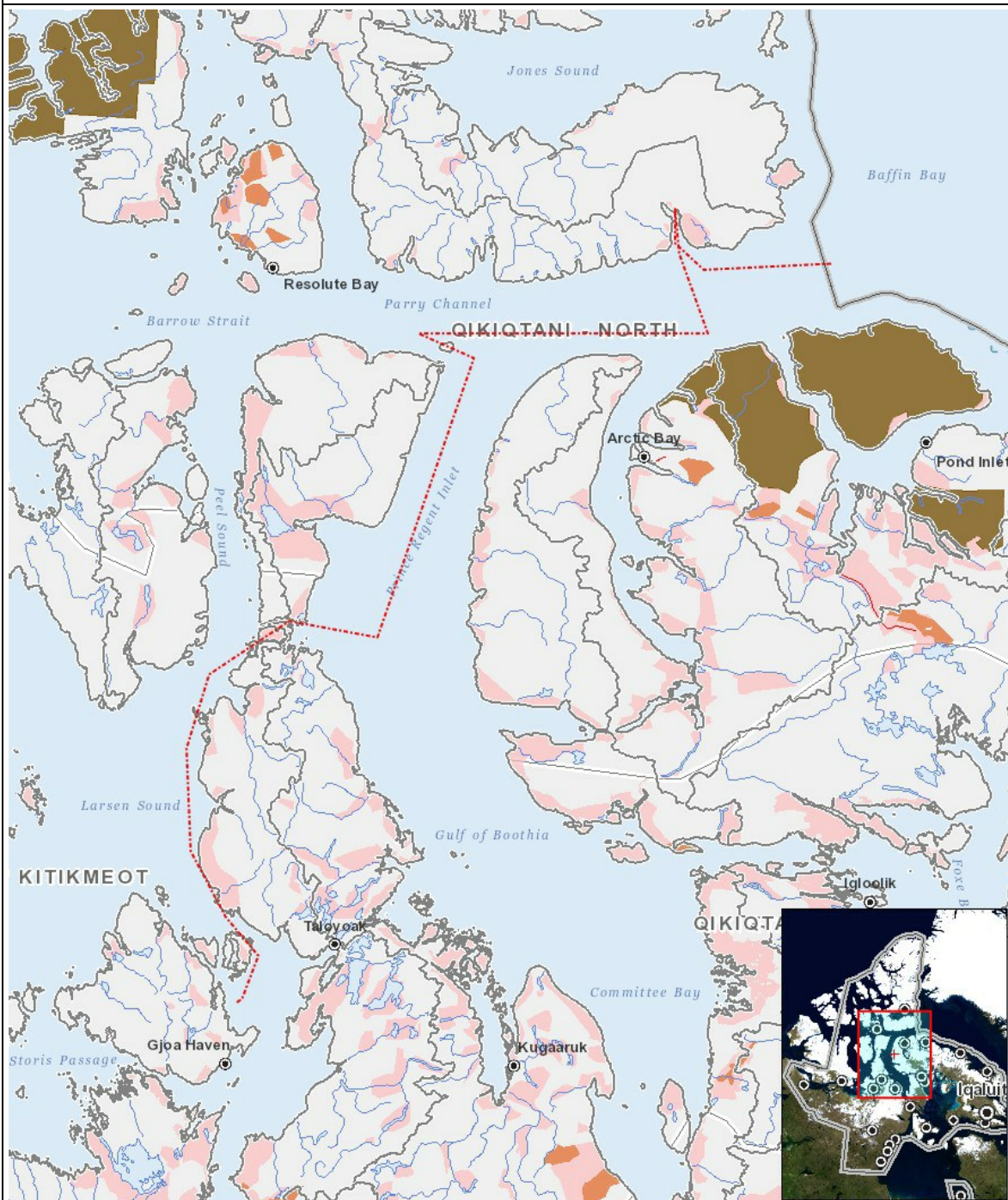
Impacts

Ilitariyauniq Avatiliriniqmut Ayurhautingit

		PHYSICAL	Designated environmental areas	Ground stability	Permafrost	Hydrology / Limnology	Water quality	Climate conditions	Eskers and other unique or fragile landscapes	Surface and bedrock geology	Sediment and soil quality	Tidal processes and bathymetry	Air quality	Noise levels	BIOLOGICAL	Vegetation	Wildlife, including habitat and migration patterns	Birds, including habitat and migration patterns	Aquatic species, incl. habitat and migration/spawning	Wildlife protected areas	SOCIO-ECONOMIC	Archaeological and cultural historic sites	Employment	Community wellness	Community infrastructure	Human health
Havakvinga																										
-		-	-	-	-	-	-	-	-	-	-	-	-	-	-	-	-	-	-	-	-	-	-	-	-	-
Aulapkaininnga																										
Marine Based Activities		-	-	-	-	-	P	-	-	-	P	-	-	-	-	-	-	-	-	-	-	-	-	-	-	-
Piiqtauniq																										
-		-	-	-	-	-	-	-	-	-	-	-	-	-	-	-	-	-	-	-	-	-	-	-	-	-

(P = Nakuuyuq, N = Nakuungittut unalu mikhilimaittuq, M = Nakuungittut unalu mikhittaaqtuq, U = Naluyauyuq)

PROJECT MAP



LIST OF PROJECT GEOMETRIES:

- | | | |
|---|----------|--|
| 1 | polyline | Transit through Northwest Passage with survey in Crocker Bay |
|---|----------|--|