



UNCLASSIFIED

Raytheon
Canada Limited

CAM-M LANDFARM DESIGN AND MANAGEMENT PLAN

Contract # W8485-100224/001/NX

Document Number
PLN-EHS-14, Rev 1, 15-Oct-2018

Prepared for
North Warning System & Assoc. Projects
Aerospace Equipment Program Directorate
455 Blvd de la Carrière
11th Floor
Gatineau, Québec
K1A 0K2

Prepared by

Raytheon
Canada Limited

400 Cooper Street
Suite 3000
Ottawa, ON, K2P 2H8

Warning: Information Subject to Export Control Laws — This document (and/or software, if applicable) may contain export-restricted data whose export/transfer/disclosure is restricted by U.S. and Canadian law. Dissemination to non U.S. persons whether in United States or abroad requires an export license or other authorizations from the United States and Canadian Governments.

UNCONTROLLED WHEN PRINTED



CHANGE HISTORY

This sheet is a record of each issue of this document. When the revised document is issued, the previous issue is automatically superseded.

Revision	Date	Author	Pages Changed	Reason for Change
1	15-Oct-2018	W. Wyman	All	New Document



TABLE OF CONTENTS

Change History	2
Table of Contents	3
List of Tables	3
1.0 Introduction	4
1.1 Overview.....	4
2.0 General Information	4
2.1 Climate	4
2.2 Geology	4
2.3 Surficial Deposits	4
3.0 Location and Construction of Facilities	5
3.1 Location	5
3.2 Construction	5
4.0 Landfarm Management	5
4.1 General.....	5
4.2 Health and Safety	5
4.3 Operation.....	6
4.4 Environmental Control	6
4.5 Closure	6
Annex A: CAM-M Site Plan and Proposed Landfarm Location.....	7
Annex B: CAM-M Landfarm Design Drawing	10
Annex C: CCME Criteria	11
Annex D: Wastewater Discharge Criteria.....	12

LIST OF TABLES

Table 1: CCME - Canadian Soil Quality Guidelines	11
Table 2: Wastewater Discharge Criteria.....	12



1.0 INTRODUCTION

1.1 Overview

The North Warning System Office (NWSO) occasionally has a requirement to remediate spills on-site. Given the effort involved, landfarming impacted soil will only be considered where it is the best option for remediating a spill (e.g. treating the soil from a large spill instead of shipping it off-site for treatment). This is a general plan for the construction and operation of a landfarm for hydrocarbon impacted soil at CAM-M, Cambridge Bay. JET-A1 fuel is the main fuel used on the North Warning System (NWS) so it is the most common hydrocarbon contaminant in soil.

During the a field season, as required, the NWSO intends on having a contract in place to allow for the excavation of all contaminated soils; preparation of a engineered landfarm to receive and remediate contaminated soil; conduct confirmatory soil sampling to ensure all contamination is removed according to the CCME commercial standard for coarse-grained soil; back-fill and grade excavated areas; and, till contaminated soil until remediated to the CCME commercial standard for coarse-grained soil (Annex C). Confirmatory sampling will be conducted during tilling to ensure the remediation target is met or exceeded; and at which time the landfarm will be decommissioned.

2.0 GENERAL INFORMATION

2.1 Climate

The site is about 35 m above sea level on a gently rising coastal plateau which has numerous lakes and ponds. The airport elevation is about 27 m above sea level. The Augustus Hills are west of the site and have an altitude of approximately 80 m.

The total mean annual rain and snowfall are 72 mm and 80 cm, respectively. The majority of the precipitation falls from July to September. The mean annual temperature is -14°C, with the warmest month being July and the coldest months being December to March.

2.2 Geology

The CAM-M site is located on a gravel ridge having fresh water ponds to the west, east, and north. The ridge is about 1 km wide and located north of the west arm of Cambridge Bay inlet. The bedrock exposed along the eastern and western shores of Cambridge Bay consist of mainly, flat-lying carbonate rocks from the Precambrian

2.3 Surficial Deposits

The area west of Cambridge Bay, including the CAM-M Site, is covered by a till blanket, with regional thicknesses indicated to be up to 5 m, locally interbedded with meltwater deposits of sand and gravel.¹

¹ Smith, I.R. and Forbes, D.L. 2014: Reconnaissance assessment of landscape hazards and potential impacts of future climate change in Cambridge Bay, western Nunavut; in Summary of Activities 2013, Canada-Nunavut Geoscience Office, p. 159–170



3.0 LOCATION AND CONSTRUCTION OF FACILITIES

3.1 Location

The proposed location for the construction of the landfarm facility at CAM-M was chosen for the level area which is present which is greater than 100 m from surface water and does not impact site operation.

If a landfarm is required on-site, the design of the landfarm will account for other factors, including geotechnical suitability which considers topography, soil conditions, natural drainage in the area, depth to bedrock or permafrost, groundwater, and adverse soil conditions that may affect permafrost and potential containment. Environmental considerations will be weighed heavily in the consideration for the location of the landfarm, these include the footprint of area required; the distance from ecologically sensitive areas, including marine and freshwater systems; the distance from water supplies; contaminated soil areas; geotechnical suitability; and the accessibility of the landfarm location during the remediation work.

3.2 Construction

During the construction of the landfarm facility berms will be created around the area that will contain the contaminated soil. The berms and the base of the facility will be heavily compacted to a level of 95% compaction; this will reduce the permeability of the granular fill. Once the 54.2 m by 78.6 m facility has been prepared, the 600m³ of excavated hydrocarbon contaminated soil will be added and spread in a thin layer of 0.4 m thickness and treated to facilitate a reduction in hydrocarbon concentrations through biodegradation and volatilization.

Remediation of contaminated soil by landfarming typically involves the addition of nutrients and water to the soil, followed by tilling to aerate the soil and stimulate microbial activity.

4.0 LANDFARM MANAGEMENT

4.1 General

The focus of management of the landfarm will be safety and environmental responsibility.

Employees working in the landfarm will be trained prior to commencement of work so that they are aware of the health and safety risks associated with the type of contaminants inside the landfarm.

4.2 Health and Safety

There are four primary exposure pathways to chemicals within the landfarm:

- a. Inhalation;
- b. Ingestion;
- c. Skin contact; and
- d. Eye contact.

Since the facility is outside and concentrations of contaminants will be relatively low, inhalation exposure is not likely to be problematic. In special circumstances where contamination is heavy, respirators can be worn to scrub the air of volatile organics. Ingestion, under normal circumstances is very unlikely.

Skin contact will be prevented by issuing suitable personal protective equipment to employees working in the landfarm.



Eye contact is unlikely under normal circumstances. Where handwork is to be carried out in the landfarm with the risk of eye contact, protective goggles will be required.

4.3 Operation

The life cycle of the landfarm involves a survey the area, the removal of all organic materials and debris and preparation of the ground: the construction of roadways for access; construction of the landfarm facility; and placement of Type B hydrocarbon contaminated soils.

During the landfarm operation, granular nutrients are to be distributed evenly over the surface of the contaminated soil, at rates that will provide the minimum nitrogen loading. Moisture conditioning of the landfarm will be conducted as required by application of water spray to maintain optimum water content within the soil.

After application of nutrients, the full thickness of the soil is to be tilled every 10 days. During periods of prolonged warm, dry weather, the tilling frequency will be increased to every 5 days. During periods of precipitation, tilling of the soil will be delayed until the soil is considered damp to a depth of 100 mm.

4.4 Environmental Control

The high level of compaction of the granular material which where used to build the berm and the base of the facility will ensure that all leachate is captured within the facility. No water from the landfarm will flow directly to the surrounding environment; instead any water accumulating within the facility will be recycled back over the material contained in the facility.

The landfarm will be monitored weekly during summer months by the contractor to ensure proper operating conditions of soil moisture and aeration, i.e., moisture content around 5%, uncompacted soil. Soil samples will be routinely collected and analytically tested to ensure that contaminated soil is remediating.

Any repairs to the landfarm facility will be noted during weekly inspections, any repairs will be carried out promptly. The nature of the repairs required and when repairs were completed will be recorded in the weekly report.

All contact water in the perimeter collection system is to be collected and tested to ensure it meets the wastewater discharge criteria (Annex D) prior to the facility decommissioning. If the contact water does not meet these guidelines, it will be treated so that it does meet the guidelines.

Equipment used in the landfarming operation will be cleaned off within the landfarm area prior to exiting to ensure that contaminated soil is not transferred away from the landfarm on the wheels and other parts of this equipment.

4.5 Closure

Once the soil in the landfarm facility has been remediated to the CCME Canadian Soil Quality Standards for commercial coarse-grained soil; and confirmatory testing of the soils verifies that the remediation objectives have been reached the landfarm will be decommissioned.

Any wastewater in the perimeter collection system will be tested and treated accordingly to ensure that prior to discharge all wastewater conforms to Wastewater Discharge Criteria.

The perimeter berms will be regraded to prevent ponding within the landfarm and the final grading will promote drainage away from the site and will match the surrounding terrain.



ANNEX A: CAM-M SITE PLAN AND PROPOSED LANDFARM LOCATION



UNCLASSIFIED

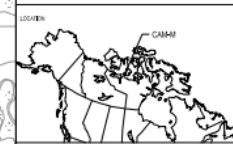


Government of Canada
Gouvernement du Canada

LEVEL OF SECURITY / NIVEAU DE SÉCURITÉ
TO BE REVIEWED / À ÊTRE RÉVISÉ

NORTH WARNING SYSTEM OFFICE
Bureau du système d'alerte du Nord

Raytheon
Canada Limited



NOTES:

1. PROPERTY BOUNDARIES SHOWN ARE APPROXIMATE. SEE NORTH WARNING SYSTEM REAL PROPERTY STATEMENT OF WORK DRAWING PACKAGE FOR THIS SITE'S PRECISE PROPERTY BOUNDARIES.

--- AIRBORNE P.O.L. LINE

--- ELECTRICAL CABLE

--- P.O.L. SPILL KIT

--- HAZMAT STORAGE

--- CHEMICAL SPILL KIT

DRAWING DERIVED FROM PROJECT NO. 436033

1 10 OCT 18 REV AS PER ENVIRO. MARK-UPS WW

NO. DATE REVISION APPRO.

SCALE / ÉCHELLE 1:50

LOCATION / EMPLACEMENT

CAM-M

CAMBRIDGE BAY

NUNAVUT

PROJECT / PROJET

TRACE / VÉRIFIER

SITING

DATE 2017/06/01

SUBJECT / SUJET

SITE PLAN

PRODUCTION

DESIGNED BY / CONÇU PAR

U.S.

DESIGNED BY / CONÇU PAR

U.S.

CHECKED BY / VÉRIFIÉ PAR

U.S.

COORDINATION

U.S.

PROJ. NO. / NO. PROJET

PP NO. / NO. PP

DWG. NO. / NO. Dessin

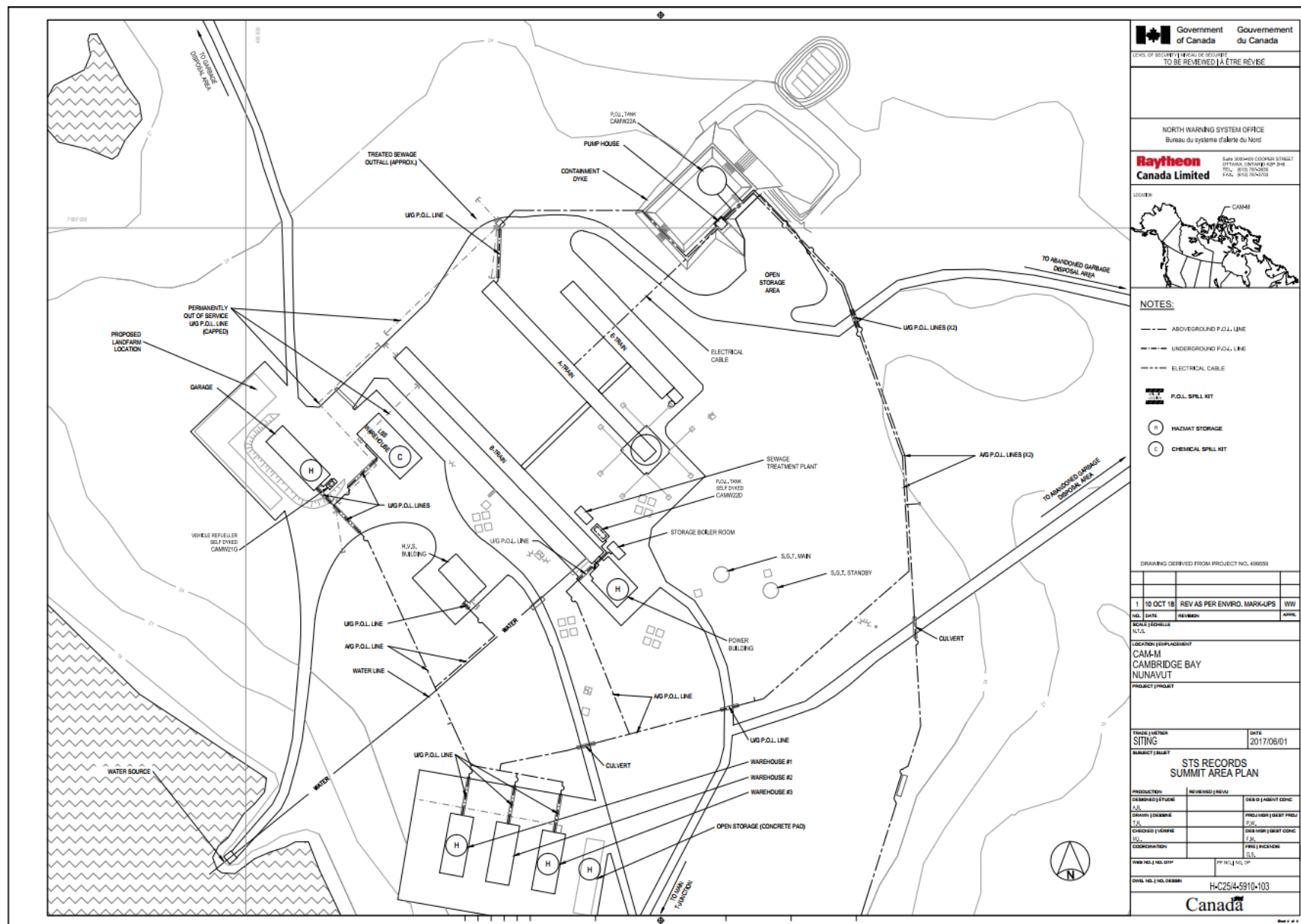
H-C2514-5910-102

Canada

UNCONTROLLED WHEN PRINTED



UNCLASSIFIED



UNCONTROLLED WHEN PRINTED



ANNEX B: CAM-M LANDFARM DESIGN DRAWING

Engineered design drawings will be provided to the NWB in advance of a landfarm being established at CAM-M.



ANNEX C: CCME CRITERIA

Table 1: CCME - Canadian Soil Quality Guidelines

CCME –Canadian Soil Quality Guidelines	Commercial/ Industrial
Arsenic (inorganic)	12
Cadmium	22
Chromium (total)	87
Copper	91
Cobalt	300
Lead	600
Mercury (inorganic)	50
Nickel	50
Zinc	360
PCBs	33
PHCs F1 (C6 to C10)	230/230
PHCs F2 (C>10 to C16)	150/150
PHCs F3 (C>16 to C34)	1700/3500
PHCs F4 (C>34 to C50+)	3300/10000



ANNEX D: WASTEWATER DISCHARGE CRITERIA

Table 2: Wastewater Discharge Criteria

Wastewater Discharge Criteria	Sample (µg/L)
pH	6 to 9 (units)
Oil and Grease	5000
Arsenic (total)	100
Cadmium (dissolved)	10
Chromium (dissolved)	100
Cobalt (dissolved)	50
Copper (dissolved)	200
Lead (dissolved)	50
Mercury (total)	0.6
Nickel (dissolved)	200
PCB (total)	1000
Phenols	20
Zinc (total)	500
Benzene	370
Toluene	2