



2019 WORK PLAN BAFFIN GOLD PROPERTY VALORE METALS CORPORATION

Submitted to: QIA, CIRNAC, NIRB

Prepared by: Andrew Berry, Chief Operating Officer

Valore Metals Corporation

Suite 1020-800 West Pender Street

Vancouver, BC, V6C 2V6

Date: December 13, 2018

Table of Contents

1	Introduction	1
2	Property Description and Location	2
3	Contact Information.....	4
4	Work Completed to Date	5
	4.1 ValOre Metals Corp.....	5
	4.2 Commander Resources Ltd.	5
	4.3 Historic	6
5	2019 Exploration Program	6
	5.1 Airborne Geophysical Survey/Drone Survey.....	7
	5.2 Ground Geophysical Survey	9
	5.3 Prospecting, Geological Mapping and Rock Sampling.....	9
	5.4 Till Sampling	10
	5.5 Environmental Baseline Monitoring	10
	5.5.1 Water Quality.....	10
	5.5.2 Meteorology.....	11
	5.5.3 Wildlife Monitoring.....	11
6	Dewar Lakes Camp - Commander Resources Ltd.	12
7	Socio-Economic Benefit	13
8	Community Consultation	13
9	Archaeological Investigation.....	13

List of Figures

Figure 1: Baffin Gold Property	3
Figure 2: Land Tenure	4
Figure 3: 2019 Exploration Targets.....	7
Figure 4: Proposed Geophysical Survey Grids	9
Figure 5: Baseline Environmental Monitoring Area and Proposed Water Sampling Sites	12

List of Tables

Table 1: Land Tenure.....	2
Table 2: Work Completed to Date	6

1 Introduction

ValOre Metals Corporation (ValOre or the Company) (formerly Kivalliq Energy Corporation) is a Vancouver-based exploration company that has been operating in Nunavut since 2008. Its flagship project is the Angilak Property in the Kivalliq region.

Upon acquisition of the Baffin Gold Property, Kivalliq recognized the need to change its name to better reflect its varied and multi-commodity projects across Nunavut and elsewhere. On June 28, 2018 Kivalliq Energy Corporation officially changed their name to ValOre Metals Corporation.

The Baffin Gold Property on Baffin Island in the Qikiqtani Region of Nunavut was acquired by the Company in early 2017. The property is comprised of 15 prospecting permits (P-64 to P-76) issued by Crown Indigenous Relations and Northern Affairs Canada (CIRNAC) on February 1, 2017, 6 mineral claims, Mineral Exploration Agreement (MEA) BI-35 16-0001 BAFFIN ISLAND (Segments 1 and 2) and MEA BI-35 16-0001 FOXE on Inuit Owned Land Parcel (IOL) BI-35. Four mineral claims have since been allowed to lapse. The Baffin Gold Property currently totals 405,083.1 hectares.

As part of the consolidation of mineral tenure that comprises the Baffin Gold Property, the Company exercised an option from Commander Resource Ltd (Commander) to earn a 100% interest in mineral rights held by Commander that included 6 mineral claims and MEA BI-35 16-0001 BAFFIN ISLAND (Segments 1 and 2) on Inuit Owned Land.

In 2018 ValOre utilized Commander's Dewar Lakes Camp adjacent to the North Warning System Fox-3 Airstrip (on Crown land) to facilitate refueling for the airborne geophysical survey and for safety. The camp is located at 68°37'59" North Latitude and 71°06'38" West Longitude and was used by ValOre as a base of operations for the 2018 exploration program. Activities at the Dewar Lakes Camp are authorized under permits, licences and management plans that are administered by Commander.

Exploration activities on the Baffin Gold Property are authorized by Crown Indigenous Relations and Northern Affairs Canada (CIRNAC) Land Use Permit N2017C0010 and Qikiqtani Inuit Association (QIA) Land Use Licence Q17L3020.

Contingent on funding, the exploration program planned and proposed for 2019 will consist of low impact activities including: prospecting, geological mapping, rock, channel and soil/till sampling, airborne geophysics, ground geophysics, drone surveying and baseline environmental monitoring.

The program is designed to be in accordance with the North Baffin Regional Land Use Plan (NBRLUP), the NBRLUP Code of Good Conduct for Land Users and the DIAND Caribou Protection Measures.

ValOre Metals Corporation's management has extensive background working in Canada's north and Nunavut. Jim Paterson is the Chief Executive Officer and Chairman of the Company's board of directors;

Jeff Ward serves as President and Andrew Berry is Chief Operating Officer. The group is committed to the social and economic development of the north while maintaining a level of excellence in minimizing environmental impacts.

2 Property Description and Location

The Baffin Gold Property on Baffin Island in the Qikiqtani Region of Nunavut consists of 15 prospecting permits, 2 mineral claims and two Mineral Exploration Agreements (MEA's) with Nunavut Tunngavik Inc. (NTI) on sub-surface Inuit Owned Land Parcel BI-35 (Table 1). Surface IOL BI-34 and a portion of surface IOL BI-36 cover prospecting permits on the east side of the property. The property is 260 kilometres southwest of Clyde River and 360 kilometres northwest of Qikiqtarjuaq (Figure 1). It measures approximately 160 kilometres in an east-west direction by approximately 30 kilometres north-south and comprises a total area of 405,083.1 hectares (Figure 2).

All prospecting permits, mineral claims and the MEA's are contiguous and extend north, south, east and west between Latitudes 68.375° and 68.75° North and Longitudes 70.5° and 74.5° West in NTS map areas 027 B/05, 027 B/12, 027 B/11, 037 A/06, 037 A/07, 037 A/08, 037 A/09 and 037 A/10 (UTM coordinates: 7,584,000mN to 7,615,000mN and 520,500mE to 622,500mE, NAD83, Zone 18 and 7,586,000mN to 7,628,500mN and 377,500mE to 439,500mE Zone 19).

Table 1: Land Tenure

Permit/Claim Number	Claim Name	NTS Map Sheet	Hectares	Recorded Date	Anniversary Date	Zone	Owner*
BI-35-16001-FOXE		037A09, 027B12	64,534	01-Jan-17	01-Jan-18	18/19	Kivalliq Energy Corp.
BI-35-16001-BAFFIN GOLD		037A09, 027B12	8,105	01-Jan-17	01-Jan-18	18/19	Commander
K13301	BG 11	027B12, 027B05	1,024.20	28-Sep-09	28-Sep-19	19	Commander
K13308	BG 18	027B12, 027B05	1,024.20	28-Sep-09	28-Sep-19	19	Commander
P-62		027B05	28,322.45	01-Feb-17	01-Feb-19	19	Kivalliq Energy Corp.
P-63		027B05	28,322.45	01-Feb-17	01-Feb-19	19	Kivalliq Energy Corp.
P-64		027B12	20,171.01	01-Feb-17	01-Feb-19	19	Kivalliq Energy Corp.
P-65		027B12	19,775.21	01-Feb-17	01-Feb-19	19	Kivalliq Energy Corp.
P-66		027B12	3,967.33	01-Feb-17	01-Feb-19	19	Kivalliq Energy Corp.
P-67		027B11	26,422.80	01-Feb-17	01-Feb-19	19	Kivalliq Energy Corp.
P-68		027B11	27,984.43	01-Feb-17	01-Feb-19	19	Kivalliq Energy Corp.
P-69		037A10	27,140.65	01-Feb-17	01-Feb-19	18	Kivalliq Energy Corp.
P-70		037A09	532.75	01-Feb-17	01-Feb-19	18	Kivalliq Energy Corp.
P-71		037A09	8,615.97	01-Feb-17	01-Feb-19	18	Kivalliq Energy Corp.
P-72		037A08	28,171.44	01-Feb-17	01-Feb-19	18	Kivalliq Energy Corp.
P-73		037A08	26,001.81	01-Feb-17	01-Feb-19	18	Kivalliq Energy Corp.

Permit/Claim Number	Claim Name	NTS Map Sheet	Hectares	Recorded Date	Anniversary Date	Zone	Owner*
P-74		037A07	28,322.45	01-Feb-17	01-Feb-19	18	Kivalliq Energy Corp.
P-75		037A07	28,322.45	01-Feb-17	01-Feb-19	18	Kivalliq Energy Corp.
P-76		037A06	28,322.45	01-Feb-17	01-Feb-19	18	Kivalliq Energy Corp.
Total			405,083.1				

*Name change not formalized with the Mining Recorder yet.

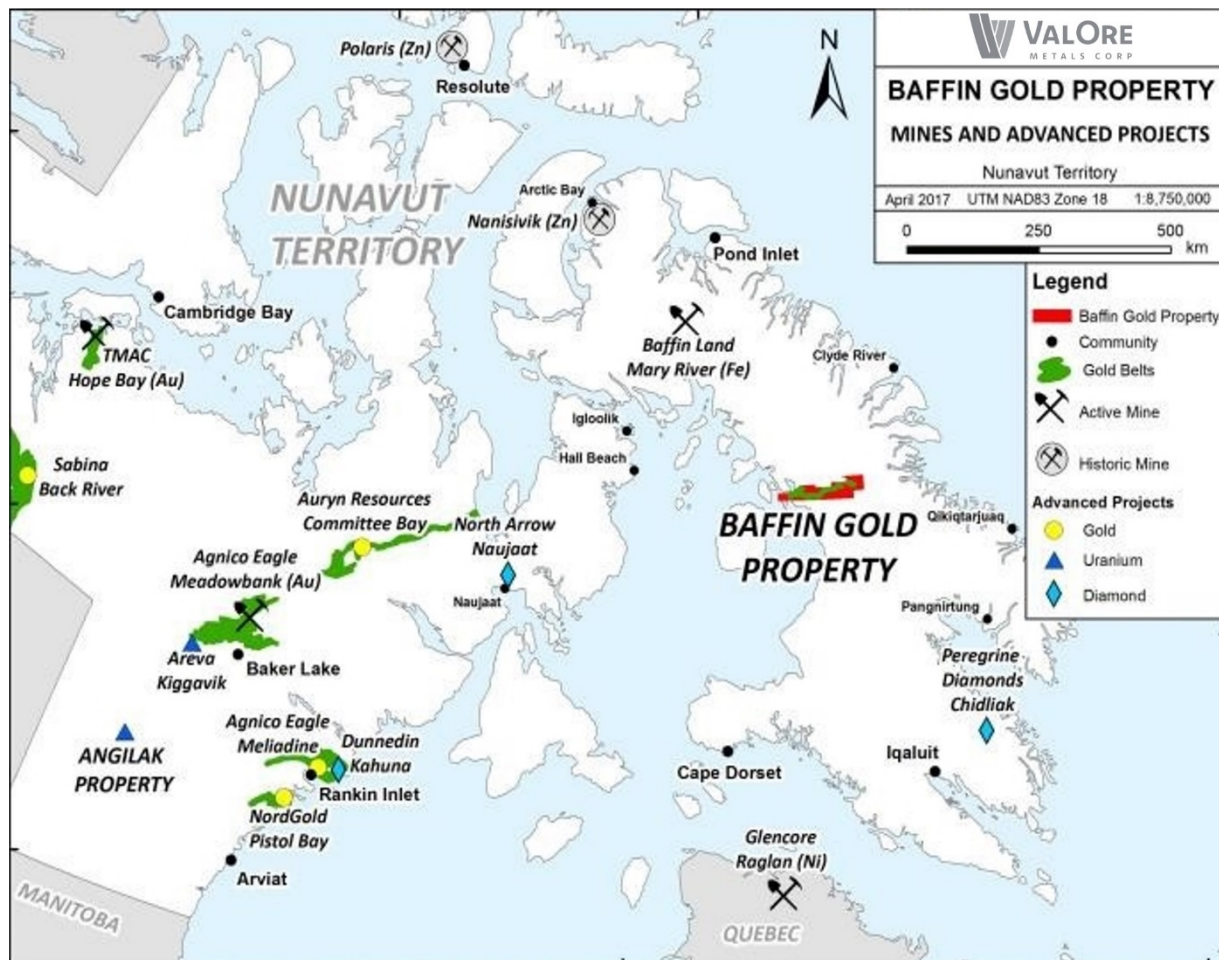


Figure 1: Baffin Gold Property

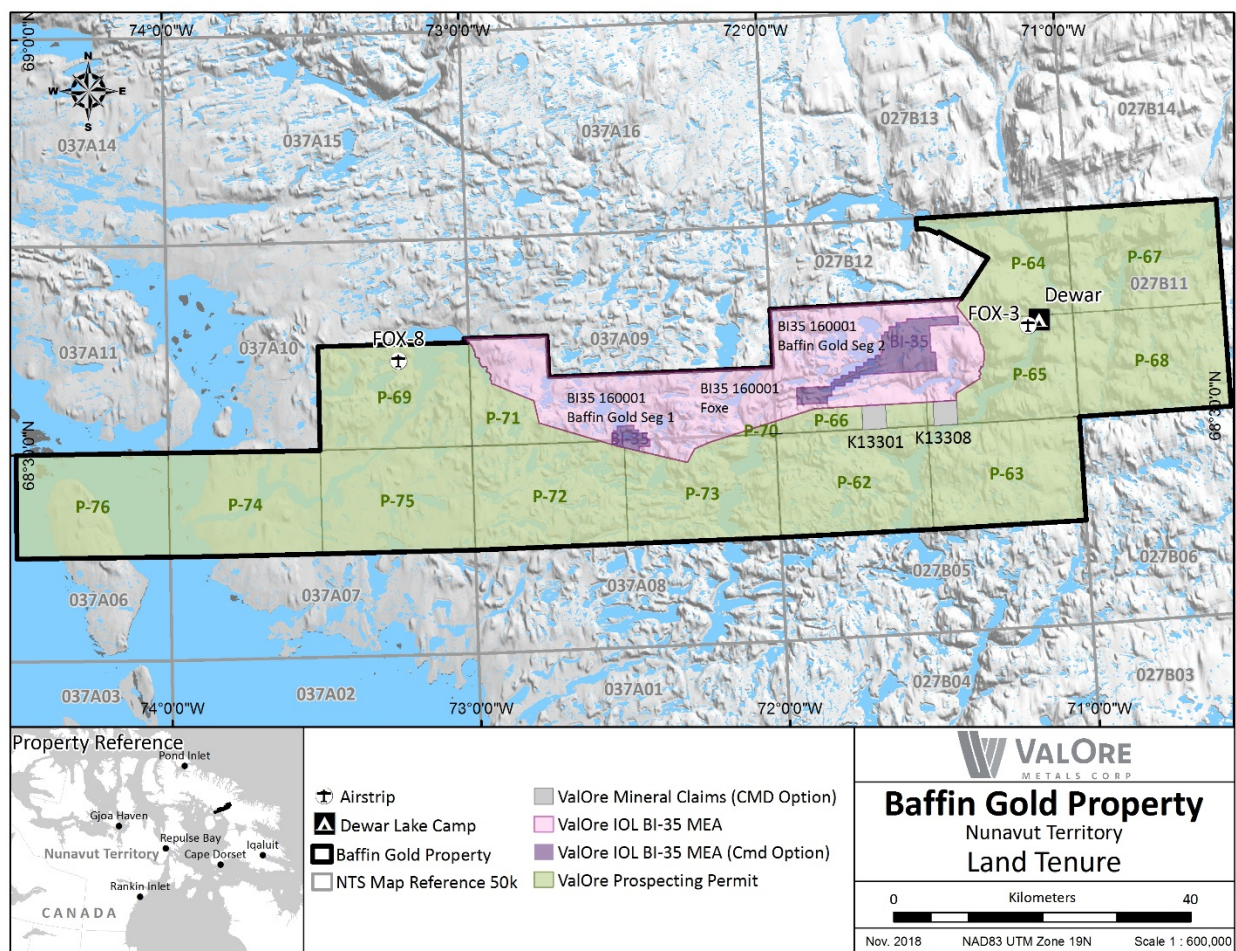


Figure 2: Land Tenure

3 Contact Information

ValOre Metals Corporation
Suite 1020- 800 West Pender Street
Vancouver, British Columbia, V6C 2V6

Tel: (604) 646-4527

Fax: (604) 646-4526

www.valoremals.com

Main Contact List

Jim Paterson (CEO)	(778) 773-9882
Jeff Ward (President)	(604) 763-8723
Andrew Berry (COO)	(604) 765-1892
Emily McNie (Project Geologist)	(604) 646-8352
FIELD CAMP MAIN CONTACT	TBD

4 Work Completed to Date

4.1 ValOre Metals Corp.

ValOre's first program on the Baffin Gold Property began on July 23, 2017. A two-man Discovery Mining Services (DMS) crew and a helicopter from Great Slave Helicopters mobilized to the Dewar Lakes campsite to begin the camp rehabilitation and prepare for the arrival of exploration crews. An additional seven crew members arrived over the next five days to assist in the camp clean-up. Between July 23 and July 31, all camp residents were dedicated to camp clean up and rehabilitation efforts.

From August 1 to August 16, the 2017 prospecting and rock sampling program collected 424 samples from the Baffin Gold Property. The 2017 till sampling program was conducted between August 10 and August 15 concurrently with the rock sampling program. A total of 492 samples were collected from seven separate grid areas on the property. The goal of the till geochemical survey was to follow-up and build upon gold in till and gold in soil anomalies that had been identified by historic work program conducted by previous operators. Additionally, two personnel contracted from Apex Geosciences collected 65 km² of high resolution airborne drone imagery to develop digital surface models and aid structural interpretation.

The 2018 Exploration program ran between July 12 to July 31. Due to the Dewar Lakes Camp being opened to support the 2018 Tundra airborne geophysical survey, ValOre sent a four-person geological crew to the Baffin Gold Property to conduct a week long till and rock sampling program. A total of 462 till samples and 31 rock samples were collected from the Baffin Gold Property.

Tundra Airborne Surveys Ltd. was contracted by ValOre to fly a fixed wing aeromagnetic horizontal gradient survey over two survey blocks on the Baffin Gold Property in 2018. The survey was completed with 14 survey flights flown on 9 days between July 12, 2018 and July 31, 2018. A total of 6,984 line kilometres of data were collected. The program ran longer than anticipated due multiple days with poor flight conditions. Together, the weather delays resulted in 10 days of standby time with no survey flights flown.

Full details outlining the 2018 Exploration Program are included in the 2018 Annual Report to CIRNAC, QIA and NIRB.

4.2 Commander Resources Ltd.

Between 2003 and 2010 Commander Resources completed eight exploration programs over the property area that included rock sampling, soil sampling and geophysical surveying. Drilling by Commander comprised a total of 19,083 metres of drill core from 158 diamond drill holes completed during the period. The existing Dewar Lakes Camp was used as the base of operations for the Commander exploration work. A temporary fly camp at Malrok Lake supported work programs west of Dewar Lakes in the Malrok area.

4.3 Historic

The table below outlines the historic work done in the area.

Table 2: Work Completed to Date

Company	Years	Type of Work Conducted
GSC	Mid 1970s	Regional and reconnaissance mapping
Cominco	1976	Prospecting, silt sampling
Cominco	1981	Re-examined area as a result of GSC lake geochemical anomalies.
Petro-Canada	1985	Detailed lake geochemical sampling, ground prospecting, rock-chip sampling
Comaplex, Agnico-Eagle	1991	Lithogeochemical sampling
Savanna Resources	1994	Prospecting and geological mapping
International Capri	1995	Follow-up sampling
BHP, Falconbridge	2000-2002	Heavy mineral concentrate sampling, rock-chip sampling. Regional till sampling, geological traversing, gossan prospecting, airborne hyperspectral survey, airborne EM/mag survey
GSC	2000-2003	Geological mapping
Commander	2003-2011	Diamond drilling, airborne electromagnetic/magnetic survey, property scale till sampling, channel sampling, detailed mapping and prospecting, ground EM/mag and resistivity/IP surveying

5 2019 Exploration Program

The purpose of the 2019 exploration program is to evaluate the potential for economic gold occurrences on the Baffin Gold Property. Exploration activities planned and proposed for 2019 consist of: prospecting, geological mapping, rock, channel and soil/till sampling, airborne geophysics, ground geophysics, drone surveying and baseline environmental monitoring. Mineral exploration activities are authorized by CIRNAC Land Use Permit N2017C0010 and QIA Land Use Licence Q17L3020. Exploration target areas for 2019 are shown below in Figure 3. Contingent upon on market conditions and funding, the program will be conducted from June 1, 2019 to September 30, 2019.

Exploration activities will be supported from Commander's existing Dewar Lakes Camp. Commander Resources has obtained regulatory authorizations to conduct camp operations at the Dewar Lakes Camp. Commander has in turn authorized ValOre to operate exploration out of the Dewar Lakes Camp.

The following sections 5.1 to 5.5 elaborate on the company's plan for exploration activities to be undertaken in the 2018 exploration program.

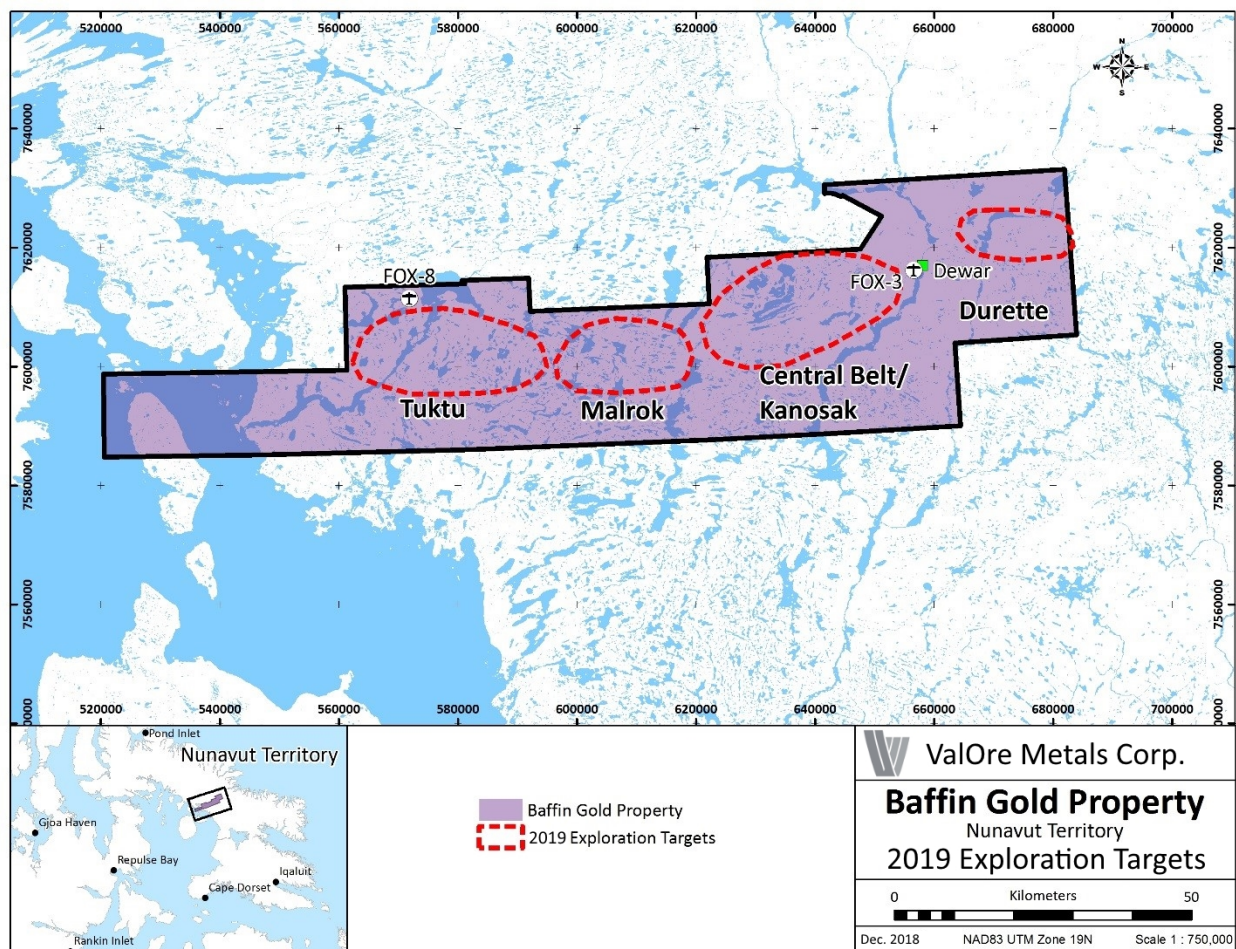


Figure 3: 2019 Exploration Targets

5.1 Airborne Geophysical Survey/Drone Survey

The proposed 2019 exploration work plan includes up to 10,000 line kilometres of airborne geophysical surveying. The airborne geophysical survey will be conducted in July and August 2018 and weather permitting, the program will run for an estimated 16 to 21 day period. The work performed will consist of fixed wing or helicopter borne surveying over target areas within the Baffin Gold Property.

Airborne surveying in 2019 will commence after July 15th in accordance with CIRNAC cited Caribou Protection Measures and ValOre's Environmental and Wildlife Management Plan. The work will be designed to avoid interference with the caribou migration and Nunavummiut harvesting activities (NBRLUP, Code of Good Conduct). The proposed survey grid areas are shown in Figure 4. High-resolution airborne geophysical surveying requires survey flight lines to be flown at low altitudes. The survey data will be collected at a mean altitude of 60 metres above ground level. ValOre will avoid low altitude flights

in areas where wildlife may be present. If wildlife are present in the area, the survey will cease until they have moved a safe distance away (at least 1 kilometre).

In addition to the airborne magnetic and electromagnetic surveying, ValOre will use light weight hand held drone technology to collect high-resolution air photos of high priority target areas.

There are no designated Caribou Protection Areas, caribou calving grounds or post-calving grounds defined within the property area. In the event that caribou cows calve outside of designated Caribou Protection Areas between May 15th and July 15th as per the CIRNAC Caribou Protection Measures, all flights at any altitude of less than 610 metres above ground level will be suspended.

The Fox-3 Airstrip or the heli-pad at the Dewar Lakes Camp will be the base for survey aircraft. Fuel will be supplied from Jet A drums staged in the main fuel cache at the Dewar Lakes Camp. Should a helicopter based airborne survey be undertaken, small temporary fuel caches of less than nine drums will be located as necessary to support the program (section 6.2).

Prior to conducting any low-level airborne geophysical surveys, work plans outlining the dates, locations and duration of the surveys will be sent to the Qikiqtani Inuit Association (QIA), Crown Indigenous Relations and Northern Affairs Canada (CIRNAC) and Nunavut Impact Review Board (NIRB).

ValOre will contact the Department of National Defense for authorization to use the North Warning System Fox-3 Airstrip, and for information on any flight restrictions prior to the start of any airborne geophysical surveying program.

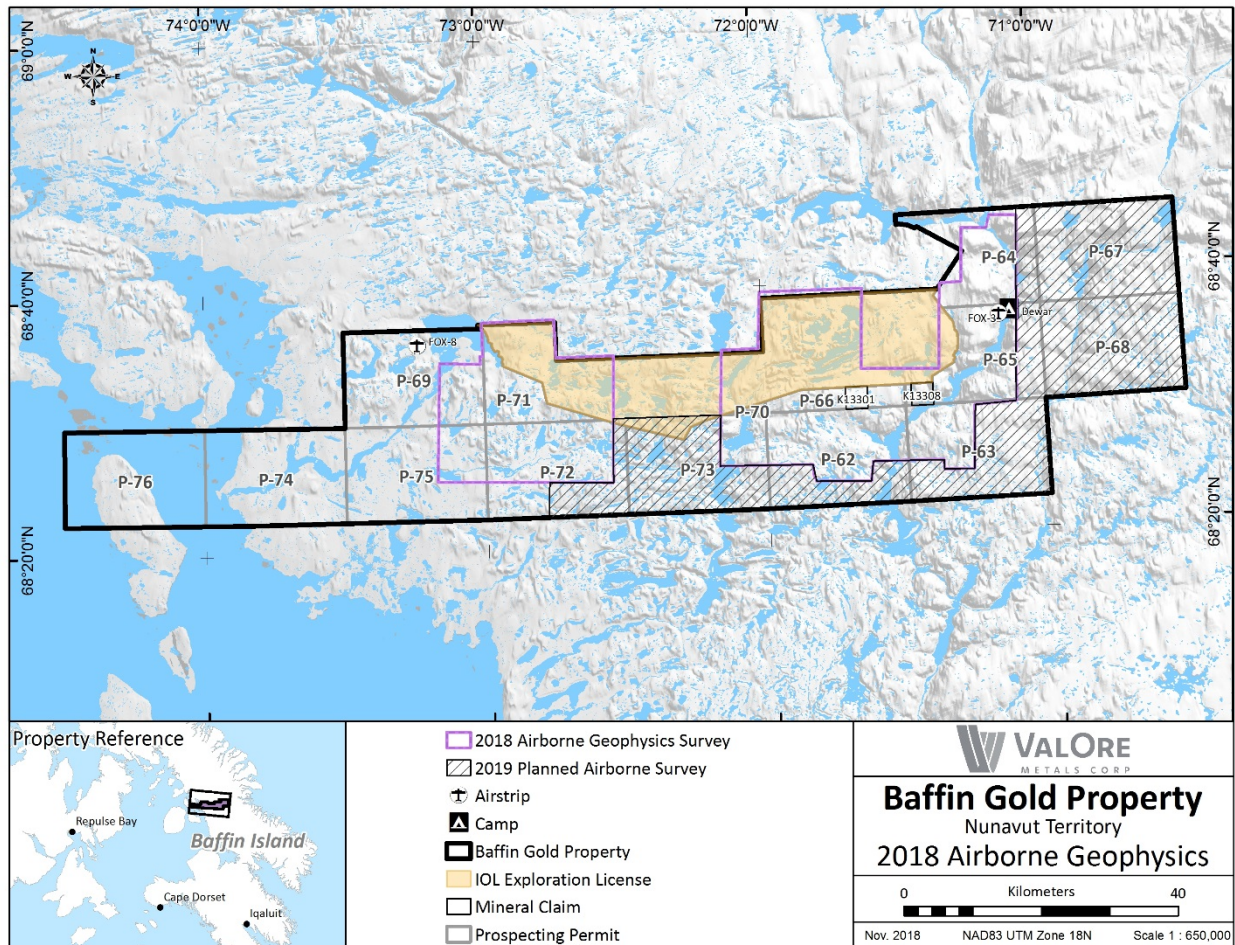


Figure 4: Proposed Geophysical Survey Grids

5.2 Ground Geophysical Survey

Summer ground geophysical surveys are proposed as part of the 2019 exploration program. This work will be conducted on foot and be helicopter supported. The program is planned to cover roughly 500 line kilometres using four crew members between June and September. Geophysical methods that may be employed include magnetic, electromagnetic or gravity surveying.

5.3 Prospecting, Geological Mapping and Rock Sampling

The 2019 prospecting and geological mapping program is planned for the summer months (July through September) and will be conducted by up to eight crew members. The program will include up to 300 line kilometres of prospecting traverses and the collection of approximately 1000 rock samples. Types of rock sampling that may be employed includes; “grab” sampling and chip/channel sampling. A rock saw may be used to cut shallow, parallel lines into exposed rock roughly two inches apart to create a linear channel. Using rock chisels and sledge hammers, sample material is then manually broken or chipped out of the

channel cut. Rock samples will be collected in poly bags, their locations will be marked using a GPS and field notes will be taken. Traverses will be conducted on foot. Crews will be supported by helicopter daily from the Dewar Lakes Camp.

5.4 Till Sampling

Till geochemical sampling will be conducted as part of the 2019 exploration program. The program will be undertaken between June and September 2019.

Till sampling will be conducted by up to eight crew members. ValOre plans to collect up to 5,000 samples for till geochemical analysis. Sampling grids will be oriented using 50 metre to 250 metre sample intervals with lines spaced 100 metres to 1000 metres apart. Using hand tools, either of a shovel or grub hoe, samplers excavate a small hole to the targeted soil horizon (A, B or C horizon) and collect a representative sample of approximately 1000 to 2000 grams of glacial till. All work will be conducted on foot. The field crews will be supported by helicopter.

The goal of the 2019 till geochemical survey is to follow-up and build upon gold in till anomalies that have been identified by the historic work programs conducted by previous operators or by anomalous values obtained from ValOre's 2017 and 2018 till sampling programs.

5.5 Environmental Baseline Monitoring

ValOre plans to implement an early stage baseline monitoring program that corresponds with the stage of current exploration. This type of program allows for rapid expansion or downsizing of monitoring studies as the exploration program changes in scope and/or location from year to year. The program is designed to build an understanding of the local and regional environmental attributes in areas being worked that are of legislative, cultural, economic and/or scientific importance. The attributes selected for study are also those that will benefit from the longest record of data collection.

Initially, the monitoring program will investigate three biophysical components:

- Water Quality
- Meteorology
- Non-invasive, Observational Based Wildlife Monitoring

Additional biophysical components may be added as the program size increases over the years.

The Baffin Gold Property baseline environmental monitoring study area is presented in Figure 5. In 2019, monitoring studies will focus on water quality, meteorology and wildlife as described below.

5.5.1 Water Quality

A water quality monitoring program will be established by ValOre prior to the initiation of any drilling program. The monitoring program will be used to generate baseline water quality data in areas of

proposed, active and advanced exploration. Sample sites will be chosen on representative water bodies and drainages near exploration targets and camp infrastructure locations. Water samples will be analyzed for hardness, metals, pH, total suspended solids, ammonia, nitrate, cyanide and alkalinity. Refer to Figure 5 for proposed water sample sites.

5.5.2 Meteorology

Meteorological data that includes air temperature, precipitation, wind speed and direction will be recorded on a daily basis. An automated weather station may be installed on the property in future years.

5.5.3 Wildlife Monitoring

The objective of the wildlife monitoring is to observe, monitor and describe wildlife use of active work areas within the property, and to produce coarse-scale population estimates for valued ecosystem components (VECs) on the property and in the active work areas. The 2019 wildlife program will consist of logging incidental observations of all wildlife encountered by field staff or designated wildlife monitors, noting any listed species or high priority VEC known to occur in study areas. The wildlife incidental observations will be included in the Annual Report to QIA, CIRNAC and NIRB.

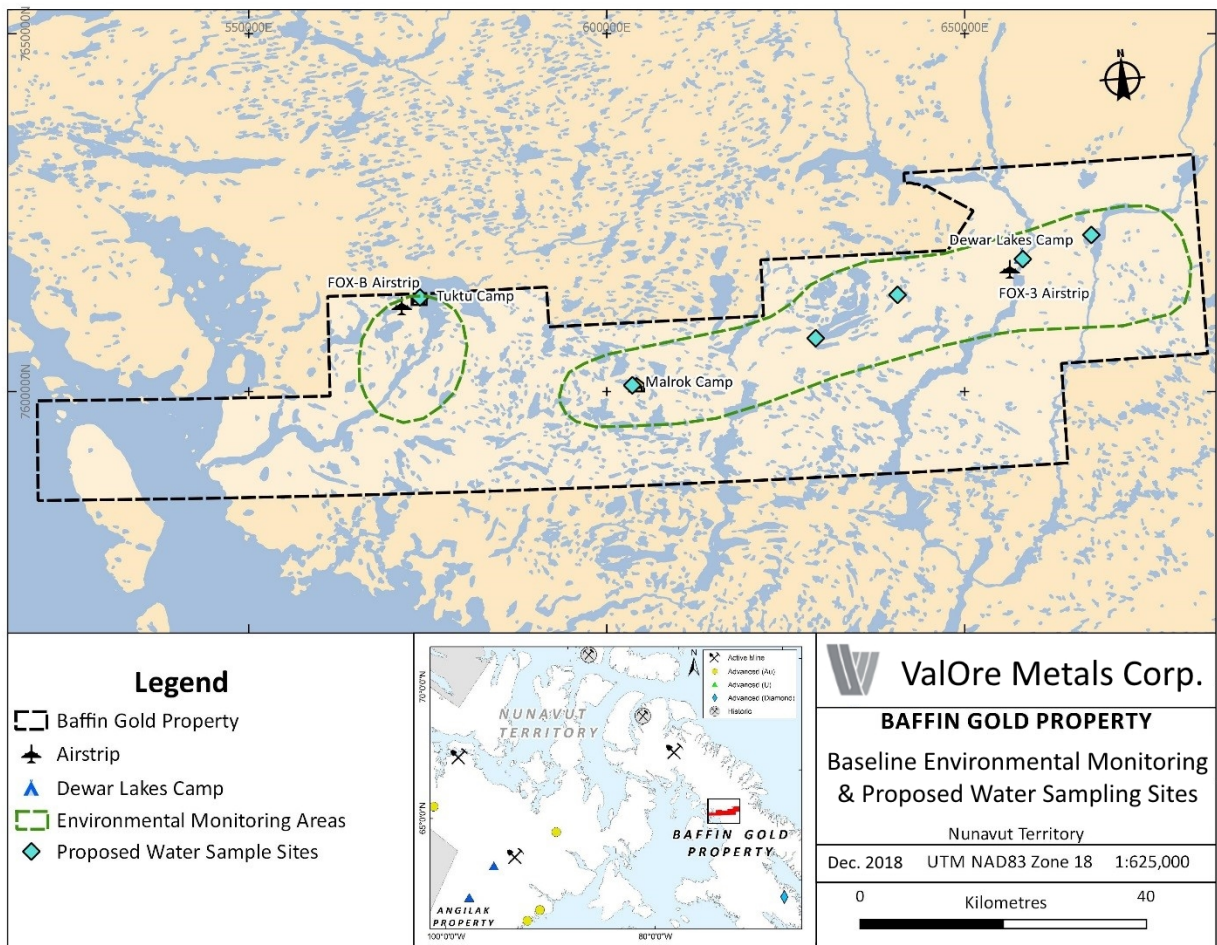


Figure 5: Baseline Environmental Monitoring Area and Proposed Water Sampling Sites

6 Dewar Lakes Camp - Commander Resources Ltd.

ValOre will utilize Commander Resources' Dewar Lakes Camp to support the proposed 2019 exploration program. The Dewar Lakes Camp is adjacent to the North Warning System Fox-3 Airstrip, on crown lands administered by CIRNAC. The camp is located at 68°37'59" N, 71°06'38" W (or 414199E/7614919N UTM Nad83 Zone 19) and was used by ValOre for the 2017 and 2018 exploration programs. The Dewar Lakes Camp is authorized by permits, licences and management plans that are administered by Commander.

Small temporary fly camps at Malrok Lake and Tuktuk (at the Fox B airstrip) are authorized under ValOres' existing Land Use permits and licences. If required, these locations may be used to support temporary field operations in outlying areas during the program.

7 Socio-Economic Benefit

2019 will be the third summer program ValOre has conducted exploration on the Baffin Gold Property. The company and its management have demonstrated a strong commitment to Nunavut with operations at the Angilak Property since 2008 and will extend that commitment to the Baffin Gold Property. ValOre will hire locally and the Company utilizes northern businesses on each program whenever possible. The company hired two assistants from Qikiqtarjuaq and a prospector from Iqaluit (originally from Qikiqtarjuaq) for the 2017 program. The primary function of the 2018 program was to complete an airborne survey. A soil sampling program was limited to a one week while camp was open for the survey, and therefore local prospectors were not utilized in 2018.

8 Community Consultation

ValOre is committed to Nunavut and values the input of Nunavummiut. The company plans to visit communities adjacent to the property (Clyde River and Qikiqtarjuaq) prior to the start of the 2019 exploration program to discuss available Inuit Qaujimajatuqangit, the work conducted to date, the proposed 2019 exploration program and any potential concerns the communities may have.

Prior to commencement of the 2017 exploration program, Andrew Berry, Chief Operating Officer and Jeff Ward, President of ValOre met with the communities of Clyde River and Qikiqtarjuaq to present the exploration program planned for 2017 on the Baffin Gold Property. As part of the visit the company also met with the Nangmoutaq (Clyde River) Hunters and Trappers Organization (HTO) and the Clyde River Community Lands and Resources Committee (CLARC). The company then met with the Qikiqtarjuaq CLARC and the community of Qikiqtarjuaq.

ValOre was unable to visit the communities 2018 due to budget constraints resulting in a much smaller than planned field program. The Company hopes to give a more complete update to communities at a later date. ValOre's community consultation log is included in the Annual Report to CIRNAC, QIA and NIRB.

9 Archaeological Investigation

Exploration to date and the planned 2019 program on the Baffin Gold Property remain at a very early stage. Once target areas are identified for advanced exploration, archeological investigations will be conducted in these areas. To avoid potential disturbance, target areas will be examined to ensure archeological sites are identified, recorded and avoided prior to the commencement of activities.

Any archaeological sites identified during exploration activities will be handled with the utmost care. Site coordinates will be recorded and designated off limits to all workers. Disturbance of any heritage site or artifacts is prohibited.