

New

▷ 9b 9b 9c

ᐅᓴᓐᓕᐅᓴᓐ: 867-975-6448, ᓴᓐᓴᓐᓴᓐ:

Post-Closure Phase: from to

$$\Lambda \subset \mathbb{N} \triangleleft \mathbb{N} \xrightarrow{\gamma} \Sigma \triangleleft \mathbb{N}^{\mathbb{N}} \supset \mathbb{C}$$

ᐃ ᑦ	ᖃᓄᐱᑦᑐᑦ ᐱᑕᓚᐱᖃᖅᐱᖃᑦ	ᑭᐃᑦ ᓄᐃᖁᑕᑦ	ᑐᔨᐸᐸᔪᔪᑦ ᓄᐃᐸᑦ ᖃᓄᖃᑦ ᐱᑐᐸᐸᑕᐸᖃᑦ ᑭᐸᓚᐱᖃᑦ	ᐱᑦᔨᖅᑕᖃᖃᖅᐱᐸᑕᐸᖃᑦ ᐱᓄᖃᑦ ᐃᔪᖃᑕᐸᖃᑦᑕᖅᐸᑕᐸᑦ ᑕᐱᑦᑭᐸᑐᖃᐸᑕᖃᑦ	ᖃᓂᓂᖃᑦᑕᖅᐸᖃᑦ ᓄᐃᑕᑭᔪᐸᔪᖃᑦ ᐱᑭᐸᑦ ᔨᑭᒥᔪᖅᐱᐸᑕᐸᑦ ᑭᓄᖃᑦ
New Tank Farm	Fuel and chemical storage	Commissioners	N/A	N/A	Within the Hamlet of Arviat boundary
Existing Tank Farm	Site Cleanup/Remediation	Municipal	Existing tank farm site.	N/A	Within the Hamlet of Arviat boundary

[illegible]

ᓄᓇᑦᒋᔭ ^ᖃ	ᐱᕈ^c	ᑲᑐᔪᐳᐸᖅᑎᕈᔭ ^ᖃ	ᖅᗴᑯᑰ ᐳᙵᖅᑎᑮᑯᑲᑯᐊᐸᕈᖅ ^{ᓂᖅ}
ᐼᖅᐱᐼᖅ	Steve England	Hamlet of Arviat	2018-09-17
ᐼᖅᐱᐼᖅ	Roxi Illnik	Hamlet of Arviat	2018-09-17

[illegible]

$a^{\dagger}r_4^{\alpha}r^{\alpha}\sigma^b \wedge c_{\mu}n_4n^{\mu}\delta\Delta\sigma_4^{\dagger b}D^c$ $\cap\cap\eta^{\dagger}\omega r^c:$

Kivalliq

[illegible]

ᐱᕐᑎᕐᓴᕐᓴᕐᓴᕐᓴᕐ ᐱᕐᑎᕐᓴᕐᓴᕐᓴᕐᓴᕐ ᐱᕐᑎᕐᓴᕐᓴᕐᓴᕐᓴᕐ ᐱᕐᑎᕐᓴᕐᓴᕐᓴᕐᓴᕐ ᐱᕐᑎᕐᓴᕐᓴᕐᓴᕐᓴᕐ ᐱᕐᑎᕐᓴᕐᓴᕐᓴᕐᓴᕐ ᐱᕐᑎᕐᓴᕐᓴᕐᓴᕐᓴᕐ	ᐱᕐᑎᕐᓴᕐᓴᕐᓴᕐᓴᕐ ᐱᕐᑎᕐᓴᕐᓴᕐᓴᕐᓴᕐ ᐱᕐᑎᕐᓴᕐᓴᕐᓴᕐᓴᕐ ᐱᕐᑎᕐᓴᕐᓴᕐᓴᕐᓴᕐ ᐱᕐᑎᕐᓴᕐᓴᕐᓴᕐᓴᕐ ᐱᕐᑎᕐᓴᕐᓴᕐᓴᕐᓴᕐ ᐱᕐᑎᕐᓴᕐᓴᕐᓴᕐᓴᕐ	ᐱᕐᑎᕐᓴᕐᓴᕐᓴᕐᓴᕐ ᐱᕐᑎᕐᓴᕐᓴᕐᓴᕐᓴᕐ ᐱᕐᑎᕐᓴᕐᓴᕐᓴᕐᓴᕐ ᐱᕐᑎᕐᓴᕐᓴᕐᓴᕐᓴᕐ ᐱᕐᑎᕐᓴᕐᓴᕐᓴᕐᓴᕐ ᐱᕐᑎᕐᓴᕐᓴᕐᓴᕐᓴᕐ ᐱᕐᑎᕐᓴᕐᓴᕐᓴᕐᓴᕐ	ᐱᕐᑎᕐᓴᕐᓴᕐᓴᕐᓴᕐ ᐱᕐᑎᕐᓴᕐᓴᕐᓴᕐᓴᕐ ᐱᕐᑎᕐᓴᕐᓴᕐᓴᕐᓴᕐ ᐱᕐᑎᕐᓴᕐᓴᕐᓴᕐᓴᕐ ᐱᕐᑎᕐᓴᕐᓴᕐᓴᕐᓴᕐ ᐱᕐᑎᕐᓴᕐᓴᕐᓴᕐᓴᕐ ᐱᕐᑎᕐᓴᕐᓴᕐᓴᕐᓴᕐ	ᐱᕐᑎᕐᓴᕐᓴᕐᓴᕐᓴᕐ ᐱᕐᑎᕐᓴᕐᓴᕐᓴᕐᓴᕐ ᐱᕐᑎᕐᓴᕐᓴᕐᓴᕐᓴᕐ ᐱᕐᑎᕐᓴᕐᓴᕐᓴᕐᓴᕐ ᐱᕐᑎᕐᓴᕐᓴᕐᓴᕐᓴᕐ ᐱᕐᑎᕐᓴᕐᓴᕐᓴᕐᓴᕐ ᐱᕐᑎᕐᓴᕐᓴᕐᓴᕐᓴᕐ
ᐱᕐᑎᕐᓴᕐᓴᕐᓴᕐᓴᕐ ᐱᕐᑎᕐᓴᕐᓴᕐᓴᕐᓴᕐ	Not yet applied.	Not Yet Applied		
Environment and Climate Change Canada	Not yet applied.	Not Yet Applied		
ᐱᕐᑎᕐᓴᕐᓴᕐᓴᕐᓴᕐ ᐱᕐᑎᕐᓴᕐᓴᕐᓴᕐᓴᕐᓴᕐ	Not yet applied.	Not Yet Applied		
ᐱᕐᑎᕐᓴᕐᓴᕐᓴᕐᓴᕐ, ᐱᕐᑎᕐᓴᕐᓴᕐᓴᕐᓴᕐᓴᕐ	Not yet applied.	Not Yet Applied		
Indigenous and Northern Affairs Canada	Not yet applied.	Not Yet Applied		
ᐱᕐᑎᕐᓴᕐᓴᕐᓴᕐᓴᕐᓴᕐ ᐱᕐᑎᕐᓴᕐᓴᕐᓴᕐᓴᕐᓴᕐ	Not yet applied.	Not Yet Applied		

Project transportation types

Transportation Type	ሥራ ላይ የሚውሉት መሳሪያዎች	Length of Use
Water	Sealft materials for new tank farm and construction equipment.	
Land	Heavy equipment vehicles required for construction.	

Project accomodation types

መርህ^፩

◀▷↳◀⁹⁶▷⁹⁶

[illegible]

ᐃᓕᓴᓴᓴ ᐱᓴᓴᓴ ᐃᓴᓴᓴᓴᓴ ᐃᓴᓴᓴᓴ ᓴᓴᓴᓴᓴᓴᓴᓴᓴ	ᓴᓴᓴᓴᓴᓴᓴ	ᐃᓴᓴᓴᓴᓴᓴ - ᓴᓴᓴᓴᓴᓴᓴᓴ	ᓴᓴᓴᓴᓴ ᐃᓴᓴᓴᓴᓴᓴᓴᓴᓴ
30-ton boom truck			transporting material
Cat 320 excavator			
Girth Scaffolds	2		
Cat 950 loader			
L9000 dump truck	1		
Pick up trucks	2		
JLG 80 foot articulated boom			
500A welding machines	3		
300A welding machine	1		
multi-welders complete with welding leads and welding consumables	4		
dewatering pump	1		
4 inch water transfer pump	1		
hydrostatic pump	1		
375 CFM compressor	1		
Cat 267 skid steer	1		
pig launcher	1		clean the pipeline
2 inch fuel transfer pump	1		
3/4 inch fuel transfer pump	1		
hose fittings and fasteners			for temporary fuel hookup

[illegible]

የፋይል ስም	የክሊንካል ደረጃ	የብዕር መጠን	የአስተማማኝነት ቁጥር	በመሬት ላይ ነው	የእርምጃ አገልግሎት	የፋይል ስም
Diesel	Fuel	3	3333000	9999000	Liters	Will meet and exceed foretasted fuel storage requirements in 20 years.
Gasoline	Fuel	1	3333000	3333000	Liters	Will meet and exceed foretasted dual storage requirements in 20 years.

ΔL^{ᄁᄁ} ᄁᄁ^{ᄁᄁ}CDᄁᄁL^{ᄁᄁ}ᄁᄁ

ᄁ ^ᄁ ᄁᄁ ^{ᄁᄁ} ᄁᄁ ^{ᄁᄁ} CDᄁᄁᄁᄁᄁᄁ	ᄁᄁ ^{ᄁᄁ} Δᄁ ^{ᄁᄁ} Cᄁᄁ ^{ᄁᄁ} Cᄁ ^{ᄁᄁ} ᄁᄁᄁᄁᄁᄁ	ᄁᄁ ^{ᄁᄁ} Δᄁ ^{ᄁᄁ} Cᄁᄁ ^{ᄁᄁ} Cᄁ ^{ᄁᄁ} ᄁᄁᄁᄁᄁᄁ
0		

$\triangleleft^b C d^c$
$$\Delta^b C j_c \sim \sigma \Delta^a \sigma^a$$
[illegible]

$\Delta^{\epsilon} \Gamma \Delta C_{\delta}^{c} D^{c}$ $\Delta^{b} D^{fb} C D L R^{c}$

The marshes in this area would need to be filled in to build the tank farm.

Additional Information

SECTION A1: Project Info

SECTION A2: Allweather Road

SECTION A3: Winter Road

SECTION B1: Project Info

SECTION B2: Exploration Activity

SECTION B3: Geosciences

SECTION B4: Drilling

SECTION B5: Stripping

SECTION B6: Underground Activity

SECTION B7: Waste Rock

SECTION B8: Stockpiles

SECTION B9: Mine Development

SECTION B10: Geology

SECTION B11: Mine

SECTION B12: Mill

SECTION C1: Pits

SECTION D1: Facility

SECTION D2: Facility Construction

SECTION D3: Facility Operation

SECTION D4: Vessel Use

SECTION E1: Offshore Survey

SECTION E2: Nearshore Survey

SECTION E3: Vessel Use

SECTION F1: Site Cleanup

SECTION G1: Well Authorization

SECTION G2: Onland Exploration

SECTION G3: Offshore Exploration

SECTION G4: Rig

SECTION H1: Vessel Use

SECTION H2: Disposal At Sea

SECTION 11: Municipal Development

[illegible]

ᐱᓪᑦ ᐸᑲᐅᑦ ᖃᓄᐃᑦᑐᑦ ᑕᑎᐅᓂᖅ; ᐅᐤᐳᖃᑕᖃᖃᓂᖅ

[illegible]

Miscellaneous Project Information

The existing lines will be decommissioned as follows: 1. The line will be excavated; 2. It will be drained, purged, cleaned, cut, bundled and stacked at a location specified by the Owner; 3. Pipe will be cut to be maximum 6 m length or as directed by the Engineer; 4. Valves, flexible connectors and usable equipment will be removed from the piping and turned over to Regional Petroleum Products Officer for future use or disposal; 5. The anodes and other cathodic protection will be removed; and 6. The excavated route will be reinstated to its original condition.

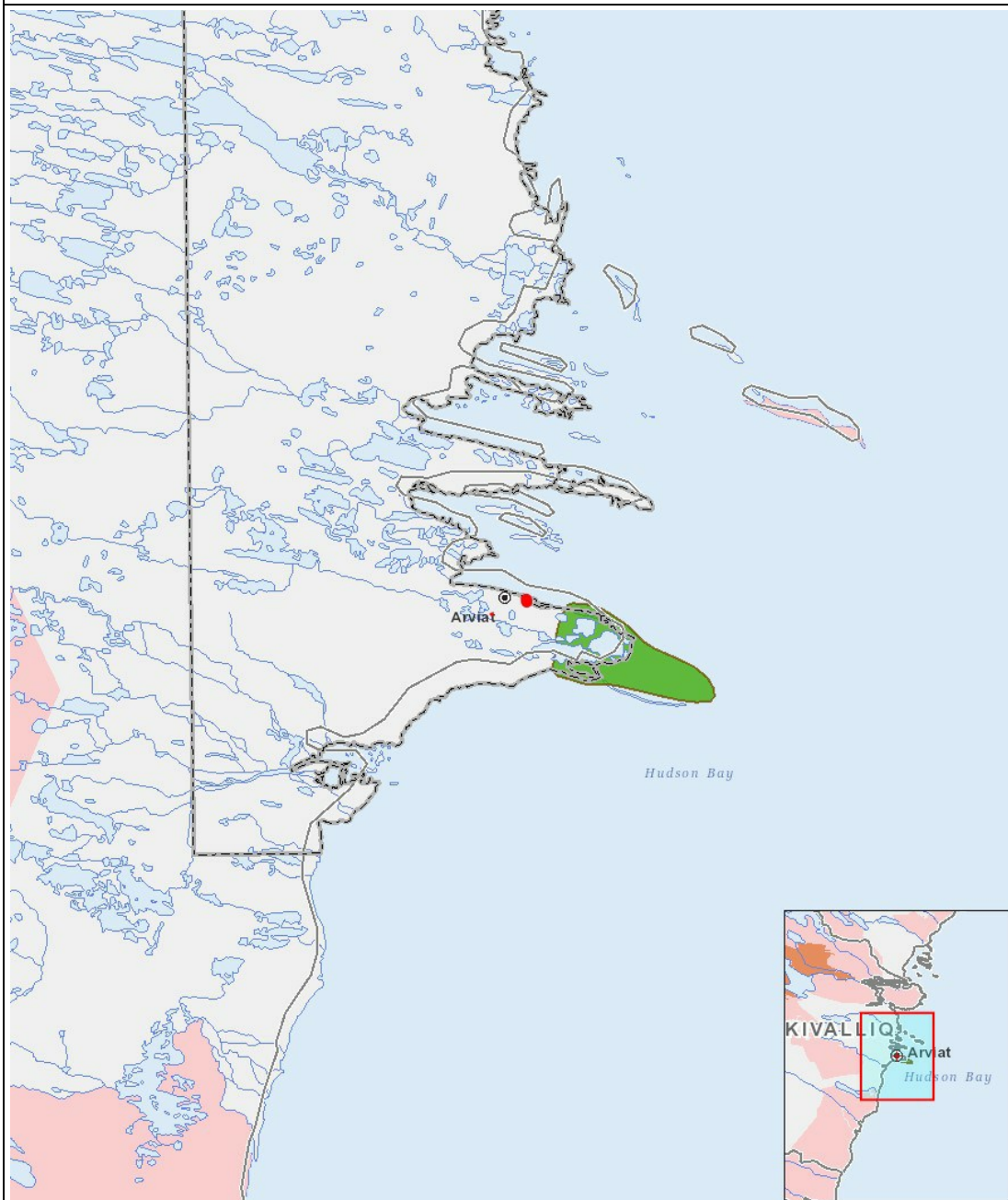
[illegible]

Cumulative Effects

Impacts

$\omega_{\Delta} \Delta^{\epsilon_b} C D \sigma^{\epsilon_c} \Gamma^c$
 $\Delta^{\epsilon_c} \Pi \Gamma D C \sigma^c \gamma^c$
 $\Delta^b \gamma^{\epsilon_b} C D \rho L \rho^c$

[illegible][illegible]



List of Project Geometries

1	polyline	New Tank Farm
2	polyline	New Tank Farm
3	polyline	Existing Tank Farm
4	polyline	Existing Tank Farm
5	point	New Tank Farm Location