



## **NIRB Uuktuutinga Ihivriughikhamut #125450**

### **Nunavut Clean Energy Project: Rankin Inlet and Baker Lake**

**Uuktuutinga Qanurittuq:** New

**Havaap Qanurittunia:** Hannayauyukhanik

**Uuktuutinga Ublua:** 2/17/2019 12:07:19 AM

**Period of operation:** from 0001-01-01 to 0001-01-01

**Piumayaat Angirutinga:** from 0001-01-01 to 0001-01-01

**Havauhikhaq Ikayuqtinga:** Kailey Wright  
Northern Energy Capital Inc  
7209 7th Ave  
Whitehorse Yukon Y1A 1R8  
Canada  
Hivayautit Nampanga:: 250-686-6644, Kayumiktukkut Nampanga::



## Hulilukaarutit

Inigiya	Hulilukaarut Qanurittuq	Nunangga Qanurittaakhaanik	Initurlinga qanuritpa	Initurlinga utuqqarnitat unaluuniit Ingilraaqnitat Uyarannguqtut akhuurninnga	Qanitqiyauyuq qanitqiamut nunallaat kitulluuniit ahiruqtaiiyainnit nuna
Baker Lake Site	Other	Municipal	This site has not had any prior development. A meteorological tower will be erected to establish the wind resources, with wind turbines constructed in future to provide power to the community.	None identified.	This area is North of the Hamlet of Baker Lake, within the municipal boundaries.
Rankin Inlet Site	Other	Municipal	This site has not had any development prior to NEC acquiring the Land Use permit. A meteorological tower has been erected to assess the wind resources of the proposed site. Wind turbines constructed in the future will provide power to the community.	None Identified.	This area is North-West of the Hamlet of Rankin Inlet, within the municipal boundaries.

### Nunaliin Ilauyun, Aviktuqhimayuniitunullu Ikayuuhiarunguyun

Nunauyuq	Atia	Timiuyuq	Upluani Uqaqatigiyaungmata
Qamaniittuaq	Sheldon Dorey	Baker Lake Hamlet Council	2018-10-01
Kangirliniq	Martha Lenio	WWF Canada	2018-05-15
Kangirliniq	Kevin Sanguin	Sakku Development Corporation	2017-09-15
Kangirliniq	David Kakuktinniq	Sakku Development Corporation	2018-06-20

# Angiuttauvaktunik

Naunaiqlugu nunanga talvani havauhikhaq ittuq:

Kivalliq

## Angiuttauvaktunik

Munariniqmut Ayuittiaqtuq	Angirutinga Qanurittuq	Tadja Qanurittaakhaanik	Ublua Tuniyauyuq/Uuktuqtuq	Umikvikhaa Ublua
Tingmiliqiyiitkut Kaanatami	Authorization to erect the Meteorological Tower in Baker Lake.	Active	2018-11-21	
Alaanut	NAVCAN: Authorization to erect the Meteorological Tower in Baker Lake.	Active	2019-01-06	
Tingmiliqiyiitkut Kaanatami	Authorization to erect the Meteorological Tower in Rankin Inlet	Active	2018-05-14	
Alaanut	NAVCAN: Authorization to erect the Meteorological Tower in Rankin Inlet	Active	2018-04-30	
Nunavut Kavamanga, Nunalingni Kavamatkunnilu Pivikhaqautikkut	Land Use Permit for Rankin Inlet Site	Active	2018-06-14	
Nunavut Kavamanga, Nunalingni Kavamatkunnilu Pivikhaqautikkut	Land Use Permit for Baker Lake Site	Active	2019-04-01	2021-03-31

## Project transportation types

Transportation Type	Qanuq Atuqtauniarmangaa	Length of Use
Water	Barge will be used to bring the wind turbines and other equipment to Rankin Inlet, and the same barge will be used to transport the equipment through Chesterfield Inlet to Baker Lake.	
Land	Overland transportation will be required to bring the turbines to their respective site locations.	

## Project accomodation types

Nunauyuq

# Ihuaqutivaluin Atuqtauyukhan

Hanalrutit atuqtaunahuat (ukuallu ikuutat, pampiutainnik, tingmitinik, akhaluutinik, hunaluuniit)

Hanalrutit Qanurittuq	Qaffiuyut	Aktikkulaanga – Qanurittullu	Qanuq Atuqtauniarmangaa
Bulldozer	1	D8 or equivalent	Road upgrading, site preparation
Excavator	2	300 series or smaller	site prep, road building, equipment handling
Dump truck	2	standard	movement of material for access upgrading and site prep
Grader	1	standard	access upgrading and development
Cement truck	2-4	standard	used to pour tower foundations
Water truck	1	standard	to supply water to rock drills from a municipal source
rock drills	1	small	to drill bedrock for blasting or direct anchor placement
skid steer and/or boom lift	1	standard	these will be used to move materials around at the laydown areas
Cranes	2	250-400 tonne main crane and a 90 tonne small crane	used for wind tower assembly

## Qanurittuq Urhuqyuaq unalu Qayangnaqtut Hunavaluit Aturninnga

Qanurittuq urhuqyuaq hunavaluit aturninnga:	Urhuqyuaq Qanurittuq	Qaffiuyut qattaryut	Qattaryuk Aktikkulaanga	Atauttimut Qaffiuyut	Ilanga	Qanuq Atuqtauniarmangaa
Diesel	fuel	1	500	500	Liters	Power equipment (Construction Phase)
Gasoline	fuel	1	205	205	Liters	Small gas powered equipment
Propane	fuel	1	100	100	Lbs	Propane heaters (if required)

## Imaqmik Aturninnga

Ubluq qanuraaluk (m3)	Aturumayain imavaluin utiqittagaani qanuq	Atulirumayain imavaluin utiqittagani humi
0	Water needed by equipment will be sourced by our contractors through their regular channels. Water requirements are expected to be minimal. No other water will be required on site.	

# Iqqakuq

## Ikkakunik Munakgiyauyunik

Havauhikhaq Hulilukaarut	Qanurittuq Iqqakut	Ihumagiyauyuq Qanuraaluktut Atuqtait	Qanuq Iqqakuurniarmangaa	Halummaqfirarnirutikhan piyutin
Equipment installation	Ikulalimanngittun iqqakuuvaluin	1 tonne maximum	General construction waste. No waste storage will occur on site. Waste will consist of general construction waste and will be disposed of at the local municipal waste facilities. No hazardous waste will be produced.	None.

### Avatiliriniqmut Ayurhautingit:

No predicted negative environmental impacts. This project is anticipated to significantly reduce the amount of diesel combustion in the Kivalliq region, and will therefore limit the amount of possible fuel spills as well as the need to ship significant amounts of fuel. This will improve the overall environmental health of the region.

# **Additional Information**

**SECTION A1: Project Info**

**SECTION A2: Allweather Road**

**SECTION A3: Winter Road**

**SECTION B1: Project Info**

**SECTION B2: Exploration Activity**

**SECTION B3: Geosciences**

**SECTION B4: Drilling**

**SECTION B5: Stripping**

**SECTION B6: Underground Activity**

**SECTION B7: Waste Rock**

**SECTION B8: Stockpiles**

**SECTION B9: Mine Development**

**SECTION B10: Geology**

**SECTION B11: Mine**

**SECTION B12: Mill**

**SECTION C1: Pits**

**SECTION D1: Facility**

**SECTION D2: Facility Construction**

**SECTION D3: Facility Operation**

**SECTION D4: Vessel Use**

**SECTION E1: Offshore Survey**

**SECTION E2: Nearshore Survey**

**SECTION E3: Vessel Use**

## **SECTION F1: Site Cleanup**

## **SECTION G1: Well Authorization**

## **SECTION G2: Onland Exploration**

## **SECTION G3: Offshore Exploration**

## **SECTION G4: Rig**

## **SECTION H1: Vessel Use**

## **SECTION H2: Disposal At Sea**

## **SECTION I1: Municipal Development**

### **Qanurittuq Ittunik Avatinga: Avatingalluanga**

This section outlines the general condition of each site including existing infrastructure and physiological characteristics. Both the Rankin Inlet and Baker Lake sites exist within the local municipal boundaries for those respective communities and within pre-disturbed areas. Both sites consist of gently undulating shallow soils with little to no vegetation. Bedrock exists at or near ground surface at both sites.

### **Qanurittuq Ittunik Avatinga: Inuuhimayunut Avatinga**

Described in part above.

### **Qanurittuq Ittunik Avatinga: Inungit-maniliurutingit Avatinga**

Community consultation is on-going. So far the feedback from both the Baker Lake and Rankin Inlet communities has been very positive. This project will grow and continue to employ two full-time workers at each site. The construction phase will also allow for additional employment, which will be sourced primarily from the Hamlets. Outside workers will require lodging and meals from the Hamlet during the construction phase and provide economic benefits during that time.

## **Miscellaneous Project Information**

### **Naunaiyainiq ukuninnga Ayurhautingit unalu Piumayaat Ikikliyuumiutinahuarutit**

The impacts from this project are largely positive. The positive impact of diversification of the communities energy generation will take some of the load off of the aging power plants. This project represents Nunavut's first big step into clean energy will be a landmark project for the territory. This project will reduce the reliance of diesel to generate electricity in these communities, reducing all the risks associated with shipping, storing, and burning large quantities of fossil fuels.

### **Tamatkiumayunik Ihuikgutivaktunik**

The life of a wind farm is typically 25-30 years. Rankin Inlet and Baker Lake will benefit from this infrastructure for future generations.



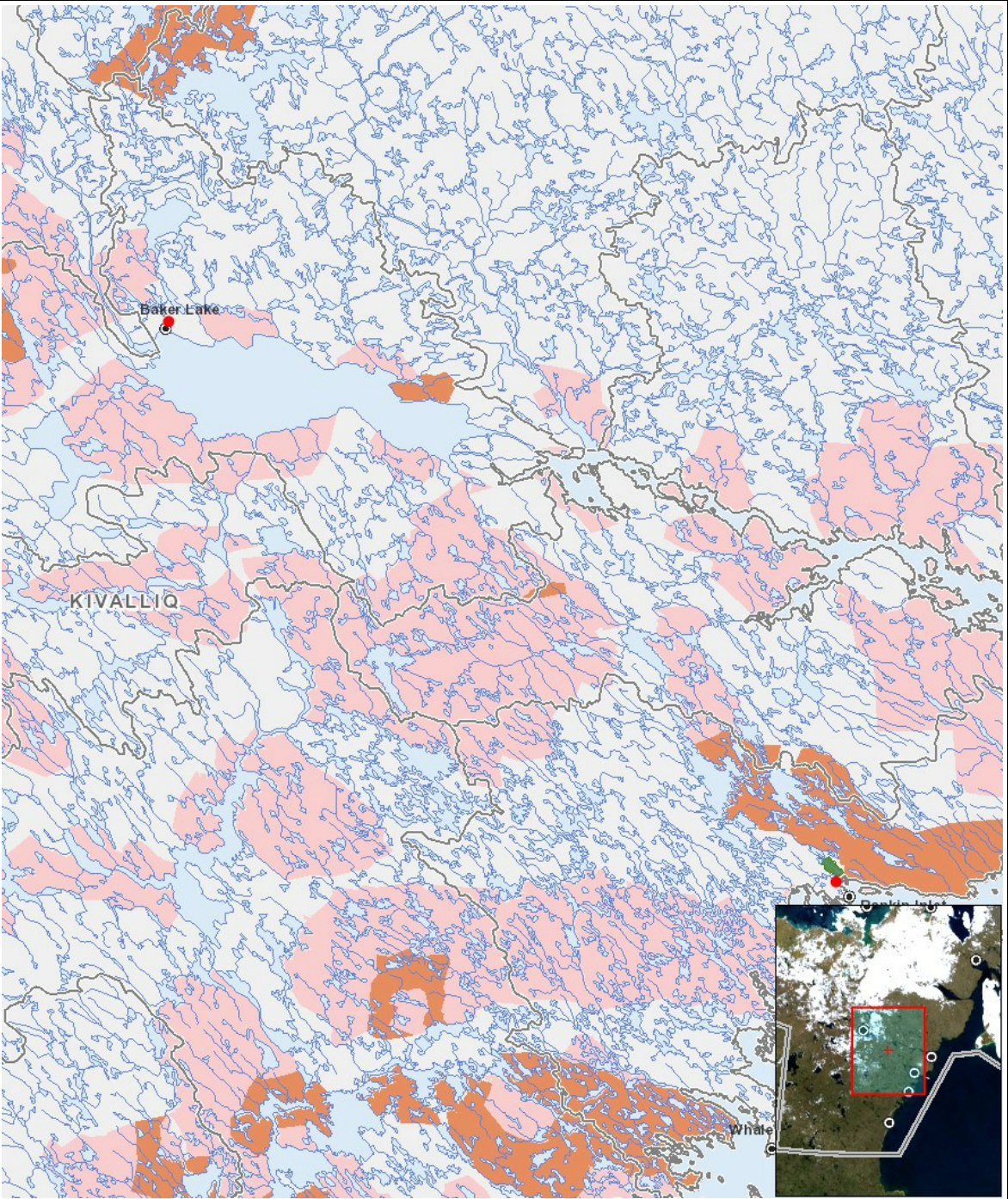
Impacts

Ilitariyauniq Avatiliriniqmut Ayurhautingit

	PHYSICAL	Designated environmental areas	Ground stability	Permafrost	Hydrology / Limnology	Water quality	Climate conditions	Eskers and other unique or fragile landscapes	Surface and bedrock geology	Sediment and soil quality	Tidal processes and bathymetry	Air quality	Noise levels	BIOLOGICAL	Vegetation	Wildlife, including habitat and migration patterns	Birds, including habitat and migration patterns	Aquatic species, incl. habitat and migration/spawning	Wildlife protected areas	SOCIO-ECONOMIC	Archaeological and cultural historic sites	Employment	Community wellness	Community infrastructure	Human health
Havakvinga		-	-	-	-	-	-	-	-	-	-	-	-	-	-	-	N	-	-		P	-	-	-	-
Aulapkaininnga		-	-	-	-	-	-	-	-	-	-	P	M		-	-	-	-	-		P	-	-	-	-
Piiqtauniq		-	-	-	-	-	-	-	-	-	-	-	-		-	-	-	-	-		-	-	-	-	-

(P = Nakuuyuq, N = Nakuungittut unalu mikhilimaittuq, M = Nakuungittut unalu mikhittaaqtuq, U = Naluyauyuq)

Havaariyauyukhamut Nayugaa



List of Project Geometries

1	point	Rankin Inlet Site
2	point	Baker Lake Site