

Demande de la CNER faisant l'objet d'un examen préalable #125460
Whale Cove area Exploration Projects

DÉTAILS

Description non technique de la proposition de projet

Anglais: The present application has been prepared to obtain a land use authorisation to conduct mineral prospecting activities and geophysical surveys on the expanded “Snow” mineral property. The exploration activities on the original “Snow” area were already authorized by the NPC decision 148849 and the NIRB decision 17EA068.

Français: L'application présente a été préparée dans le but d'obtenir les autorisations d'utilisation du territoire qui sont requises afin d'effectuer de la prospection et de la géophysique sur le territoire élargie de la propriété Snow. Les activités d'exploration sur la superficie initiale de Snow avaient déjà été autorisées par la décision du NPC #148849 et par la décision 17EA068 du NIRB.

[illegible]

Personnel

Personnel on site: 5

Days on site: 10

Total Person days: 50

Operations Phase: from 2018-07-15 to 2025-09-30

Activités

Emplacement	Type d'activité	Statut des terres	Historique du site	Site à valeur archéologique ou paléontologique	Proximité des collectivités les plus proches et de toute zone protégée
Snow expansion	Mineral Exploration	Crown	This is a new mineral property staked in 2018.	Archaeological assessments were conducted in the area during previous summers and assessments will continue at the location where exploration activities will be planned	The Whale Cove community is located approximately between 56km and 77 km of the mineral property.
Snow expansion	Mineral Exploration	Inuit Owned Surface Lands	This is a new mineral property staked in 2018.	Archaeological assessments were conducted in the area during previous summers and assessments will continue at the location where exploration activities will be planned	The Whale Cove community is located approximately between 56km and 77 km of the mineral property.

Engagement de la collectivité et avantages pour la région

Collectivité	Nom	Organisme	Date de la prise de contact
Information is not available			

Autorisations

Indiquez les zones dans lesquelles le projet est situé:

Kivalliq

Autorisations

Organisme de régulation	Description des autorisations	État actuel	Date de l'émission/de la demande	Date d'échéance
Kivalliq Inuit Association	Land use licence	Not Yet Applied		
Indigenous and Northern Affairs Canada	Land use permit	Not Yet Applied		

Project transportation types

Transportation Type	Utilisation proposée	Length of Use
Air	Transport from the Huckleberry camp site or from the Whale Cove community will be done using an helicopter.	

Project accomodation types

Autre,

Utilisation de matériel

Équipement à utiliser (y compris les perceuses, les pompes, les aéronefs, les véhicules, etc.)

Type d'équipement	Quantité	Taille – Dimensions	Utilisation proposée
Diamond drill	1	21500kg	To obtain rock cores.
Dozer D6	1	21500kg	To move diamond drill during winter period.
Rab drill	1	1500kg	To obtain rock samples.
Tracked tractors (Challenger)	3	20000kg	To transport material and equipment on authorized winter access.
Helicopter	2	1500kg	To transport material, equipment and workers.
Plane Otter	1	2500kg	To transport material, equipment and workers.
Mini excavator	1	1100kg	To obtain soil samples, to do small excavations around camp site.
Snowmobile	4	550kg	Workers transport.
ATV	4	700kg	Transport around the camps.
Zoom Boom	1	TBD	Material/equipment handling.

Décrivez l'utilisation du carburant et des marchandises dangereuses

Décrivez l'utilisation de carburant :	Type de carburant	Nombre de conteneurs	Capacité du conteneur	Quantité totale	Unités	Utilisation proposée
Aviation fuel	fuel	20	205	4100	Liters	Helicopter use

Consommation d'eau

Quantité quotidienne (m3)	Méthodes de récupération de l'eau proposées	Emplacement de récupération de l'eau proposé
0	No additional use of water is requested by this application.	

Déchets

Gestion des déchets

Activités du projet	Type des déchets	Quantité prévue	Méthode d'élimination	Procédures de traitement supplémentaires
Mineral Exploration	Déchets combustibles	7 tons	Incineration and/or transport	NA
Mineral Exploration	Eaux grises	5m ³ /day	Disposed of in natural depression located at more than 31 m from a water body.	NA
Mineral Exploration	Déchet dangereux	5 tons per year	Transport to a southern facility	Recycling or safe disposal
Mineral Exploration	Déchets non combustibles	5 tons per year	Transport to a southern facility	For recycling or safe disposal
Mineral Exploration	Eaux usées (matières de vidange)	2 tons per year	Incineration or transport to a southern facility	NA

Répercussions environnementales :

With the limited level of activity proposed, the impacts are planned to be limited and highly predictable. The application of the conditions from the different authorizations needed will reduce potential impacts at a minimum.

Additional Information

SECTION A1: Project Info

SECTION A2: Allweather Road

SECTION A3: Winter Road

SECTION B1: Project Info

SECTION B2: Exploration Activity

SECTION B3: Geosciences

SECTION B4: Drilling

SECTION B5: Stripping

SECTION B6: Underground Activity

SECTION B7: Waste Rock

SECTION B8: Stockpiles

SECTION B9: Mine Development

SECTION B10: Geology

SECTION B11: Mine

SECTION B12: Mill

SECTION C1: Pits

SECTION D1: Facility

SECTION D2: Facility Construction

SECTION D3: Facility Operation

SECTION D4: Vessel Use

SECTION E1: Offshore Survey

SECTION E2: Nearshore Survey

SECTION E3: Vessel Use

SECTION F1: Site Cleanup

SECTION G1: Well Authorization

SECTION G2: Onland Exploration

SECTION G3: Offshore Exploration

SECTION G4: Rig

SECTION H1: Vessel Use

SECTION H2: Disposal At Sea

SECTION I1: Municipal Development

Description de l'environnement existant : Environnement physique

This expansion of the mineral property is located both, on IOL and Crown Land and is contiguous to the Hudson Bay.

Description de l'environnement existant : Environnement biologique

An assessment of the area would be done should a future development is planned (example: mining).

Description de l'environnement existant : Environnement socio-économique

The property is located in the area located between 56km and 77km of the Whale Cove community.

Miscellaneous Project Information

Identification des répercussions et mesures d'atténuation proposées

Potential impact on the caribou will be reduced by applying mitigation measures described in the management plans and by the conditions that will be associated to the authorizations required to perform the exploration activities. Potential impact on archaeological sites will be limited by an archaeologist field assessment and by the respect of protection buffers around the sites found/identified. Potential impact related to hydrocarbon spills will be limited with the application of the best practices and the use of the Spill Contingency and Response Plan.

Répercussions cumulatives

The proposed activities are planned to be low scale, but any future development (example: mining) would have to be assessed by and environmental impact study.

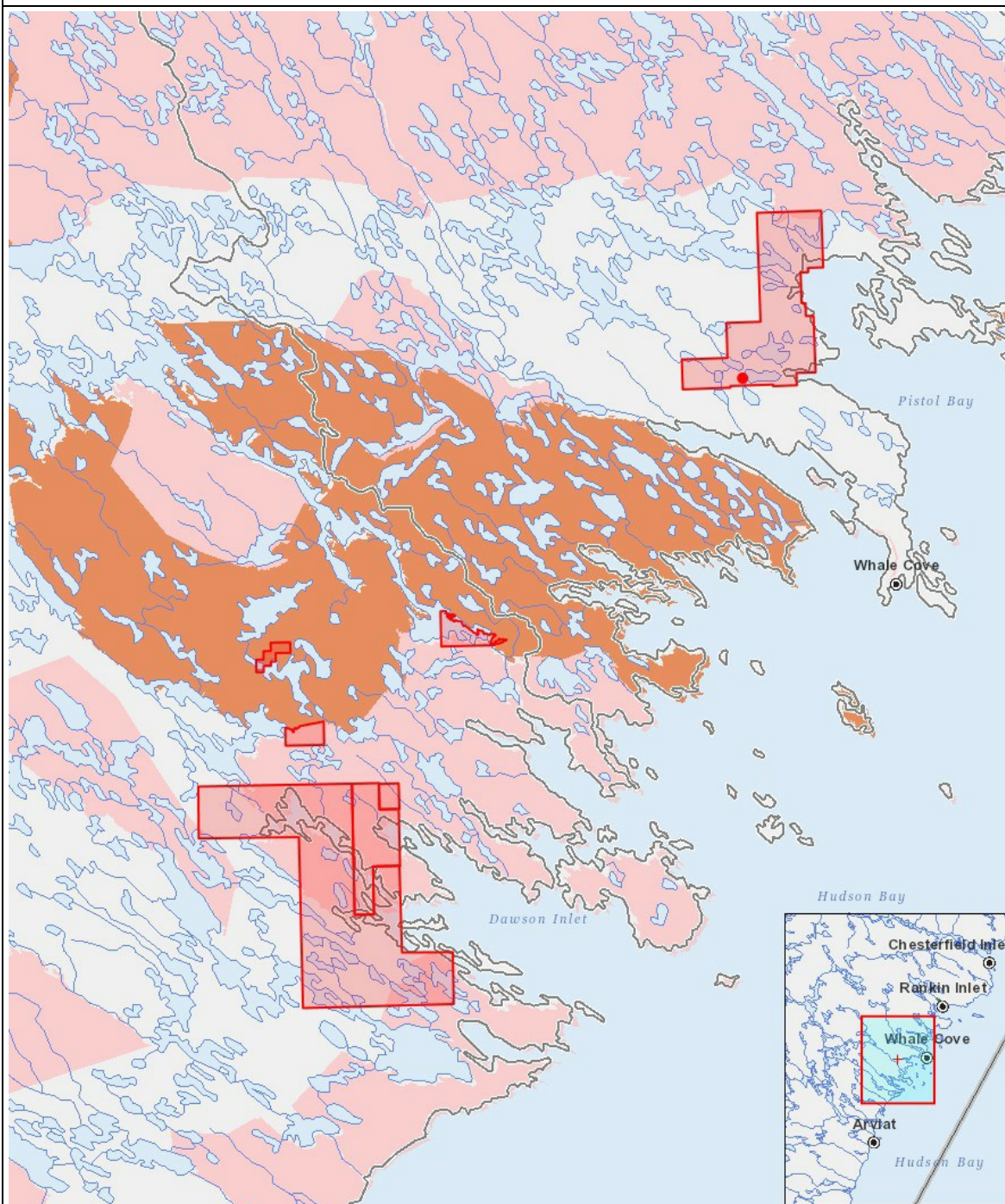
Impacts

Identification des répercussions environnementales

		PHYSICAL	Designated environmental areas	Ground stability	Permafrost	Hydrology / Limnology	Water quality	Climate conditions	Eskers and other unique or fragile landscapes	Surface and bedrock geology	Sediment and soil quality	Tidal processes and bathymetry	Air quality	Noise levels	BIOLOGICAL	Vegetation	Wildlife, including habitat and migration patterns	Birds, including habitat and migration patterns	Aquatic species, incl. habitat and migration/spawning	Wildlife protected areas	SOCIO-ECONOMIC	Archaeological and cultural historic sites	Employment	Community wellness	Community infrastructure	Human health
Construction																										
-		-	-	-	-	-	-	-	-	-	-	-	-	-	-	-	-	-	-	-	-	-	-	-	-	-
Exploitation																										
Mineral Exploration		-	-	-	-	-	-	-	-	-	-	-	N		-	-	-	-	-		P	-	-	-	-	-
Désaffectation																										
-		-	-	-	-	-	-	-	-	-	-	-	-	-	-	-	-	-	-	-	-	-	-	-	-	-

(P = Positive, N = Négative et non gérable, M = Négative et gérable, U = Inconnue)

Site du projet



Liste des géométries de projet

1	polygon	Mineral properties, already screened
2	polygon	Huckleberry-0001, already screened
3	polygon	Snow expansion
4	point	Camp proposed, already screened