



NIRB Uuktuutinga Ihivriughikhamut #125460

Whale Cove area Exploration Projects

Uuktuutinga Qanurittuq: New

Havaap Qanurittunia: Mineral Exploration

Uuktuutinga Ublua: 4/4/2019 1:49:45 PM

Period of operation: from 0001-01-01 to 0001-01-01

Piumayaat Angirutinga: from 0001-01-01 to 0001-01-01

Havauhikhaq Ikayuqtinga: Agnico-Eagle Ltd., David Frenette
Agnico Eagle Mines Ltd.
765 chemin de la mine Goldex
Val-d'Or Qc J9P7G4
Canada
Hivayautit Nampanga:: 819-874-5980, Kayumiktukkut Nampanga::

Tukihiannaqtunik havaariyaayumayumik uqauhiyun

Uiviititut: L'application présente a été préparée dans le but d'obtenir les autorisations d'utilisation du territoire qui sont requises afin d'effectuer de la prospection et de la géophysique sur le territoire élargie de la propriété Snow. Les activités d'exploration sur la superficie initiale de Snow avaient déjà été autorisées par la décision du NPC #148849 et par la décision 17EA068 du NIRB.

Personnel

Operations Phase: from 2018-07-15 to 2025-09-30

Hulilukaarutit

Inigiya	Hulilukaarut Qanurittuq	Nunannga Qanurittaakhaanik	Initurlinga qanuritpa	Initurlinga utuqqarnitat unaluuniit Ingilraaqnitat Uyarannguqtut akhuurninnga	Qanitqiyauyuq qanitqiamut nunallaat kitulluuniit ahiruqtaliyainnit nuna
Snow expansion	Mineral Exploration	Crown	This is a new mineral property staked in 2018.	Archaeological assessments were conducted in the area during previous summers and assessments will continue at the location where exploration activities will be planned	The Whale Cove community is located approximately between 56km and 77 km of the mineral property.
Snow expansion	Mineral Exploration	Inuit Owned Surface Lands	This is a new mineral property staked in 2018.	Archaeological assessments were conducted in the area during previous summers and assessments will continue at the location where exploration activities will be planned	The Whale Cove community is located approximately between 56km and 77 km of the mineral property.

Nunaliin Ilauyun, Aviktuqhimayuniitunullu Ikayuuhiarunguyun

Nunauyuq	Atia	Timiuyuq	Upluani Uqaqatigiyaungmata
Information is not available			

Angiuttauvaktunik

Naunaiqlugu nunanga talvani havauhikhaq ittuq:

Kivalliq

Angiuttauvaktunik

Munariniqmut Ayuittiaqtuq	Angirutinga Qanurittuq	Tadja Qanurittaakhaanik	Ublua Tuniyauyuq/Uuktuqtuq	Umikvikhaa Ublua
Kivalliq Inuit Katimayit	Land use licence	Not Yet Applied		
Indigenous and Northern Affairs Canada	Land use permit	Not Yet Applied		

Project transportation types

Transportation Type	Qanuq Atuqtauniarmangaa	Length of Use
Air	Transport from the Huckleberry camp site or from the Whale Cove community will be done using an helicopter.	

Project accomodation types

Alaanut,

Ihuaqutivaluin Atuqtauyukhan

Hanalrutit atuqtaunahuat (ukuallu ikuutat, pampiutainnik, tingmitinik, akhaluutunik, hunaluuniit)

Hanalrutit Qanurittuq	Qaffiuyut	Aktikkulaanga – Qanurittullu	Qanuq Atuqtauniarmangaa
Diamond drill	1	21500kg	To obtain rock cores.
Dozer D6	1	21500kg	To move diamond drill during winter period.
Rab drill	1	1500kg	To obtain rock samples.
Tracked tractors (Challenger)	3	20000kg	To transport material and equipment on authorized winter access.
Helicopter	2	1500kg	To transport material, equipment and workers.
Plane Otter	1	2500kg	To transport material, equipment and workers.
Mini excavator	1	1100kg	To obtain soil samples, to do small excavations around camp site.
Snowmobile	4	550kg	Workers transport.
ATV	4	700kg	Transport around the camps.
Zoom Boom	1	TBD	Material/equipment handling.

Qanurittuq Urhuqyuaq unalu Qayangnaqtut Hunavaluit Aturninnga

Qanurittuq urhuqyuaq hunavaluit aturninnga:	Urhuqyuaq Qanurittuq	Qaffiuyut qattaryut	Qattaryuk Aktikkulaanga	Atauttimut Qaffiuyut	Ilanga	Qanuq Atuqtauniarmangaa
Aviation fuel	fuel	20	205	4100	Liters	Helicopter use

Imaqmik Aturninnga

Ubluq qanuraaluk (m3)	Aturumayain imavaluin utiqittagaani qanuq	Atulirumayain imavaluin utiqittagani humi
0	No additional use of water is requested by this application.	

Iqqakuq

Ikkakunik Munakgiyauyunik

Havauhikhaq Hulilukaarut	Qanurittuq Iqqakut	Ihumagiyauyuq Qanuraaluktut Atuqtait	Qanuq Iqqakuurniarmangaa	Halummaqtitarnirutikhan piyutin
Mineral Exploration	Ikulalaaqtun iqqakuuvaluin	7 tons	Incineration and/or transport	NA
Mineral Exploration	Qirnarivyaktuq imaq	5m ³ /day	Disposed of in natural depression located at more than 31 m from a water body.	NA
Mineral Exploration	Hivuuranagtun iqakuuvaluin	5 tons per year	Transport to a southern facility	Recycling or safe disposal
Mineral Exploration	Ikulalimanngittun iqqakuuvaluin	5 tons per year	Transport to a southern facility	For recycling or safe disposal
Mineral Exploration	Anaagun (inuin anaaguin)	2 tons per year	Incineration or transport to a southern facility	NA

Avatiliriniqmut Ayurhauingit:

With the limited level of activity proposed, the impacts are planned to be limited and highly predictable. The application of the conditions from the different authorizations needed will reduce potential impacts at a minimum.

Additional Information

SECTION A1: Project Info

SECTION A2: Allweather Road

SECTION A3: Winter Road

SECTION B1: Project Info

SECTION B2: Exploration Activity

SECTION B3: Geosciences

SECTION B4: Drilling

SECTION B5: Stripping

SECTION B6: Underground Activity

SECTION B7: Waste Rock

SECTION B8: Stockpiles

SECTION B9: Mine Development

SECTION B10: Geology

SECTION B11: Mine

SECTION B12: Mill

SECTION C1: Pits

SECTION D1: Facility

SECTION D2: Facility Construction

SECTION D3: Facility Operation

SECTION D4: Vessel Use

SECTION E1: Offshore Survey

SECTION E2: Nearshore Survey

SECTION E3: Vessel Use

SECTION F1: Site Cleanup

SECTION G1: Well Authorization

SECTION G2: Onland Exploration

SECTION G3: Offshore Exploration

SECTION G4: Rig

SECTION H1: Vessel Use

SECTION H2: Disposal At Sea

SECTION I1: Municipal Development

Qanurittuq Ittunik Avatinga: Avatingalluanga

This expansion of the mineral property is located both, on IOL and Crown Land and is contiguous to the Hudson Bay.

Qanurittuq Ittunik Avatinga: Inuuhimayunut Avatinga

An assessment of the area would be done should a future development is planned (example: mining).

Qanurittuq Ittunik Avatinga: Inungit-maniliurutingit Avatinga

The property is located in the area located between 56km and 77km of the Whale Cove community.

Miscellaneous Project Information

Naunaiyainiq ukuninnga Ayurhautingit unalu Piumayaat Ikikliyuumiutinahuarutit

Potential impact on the caribou will be reduced by applying mitigation measures described in the management plans and by the conditions that will be associated to the authorizations required to perform the exploration activities. Potential impact on archaeological sites will be limited by an archaeologist field assessment and by the respect of protection buffers around the sites found/identified. Potential impact related to hydrocarbon spills will be limited with the application of the best practices and the use of the Spill Contingency and Response Plan.

Tamatkiumayunik Ihuikgutivaktunik

The proposed activities are planned to be low scale, but any future development (example: mining) would have to be assessed by and environmental impact study.

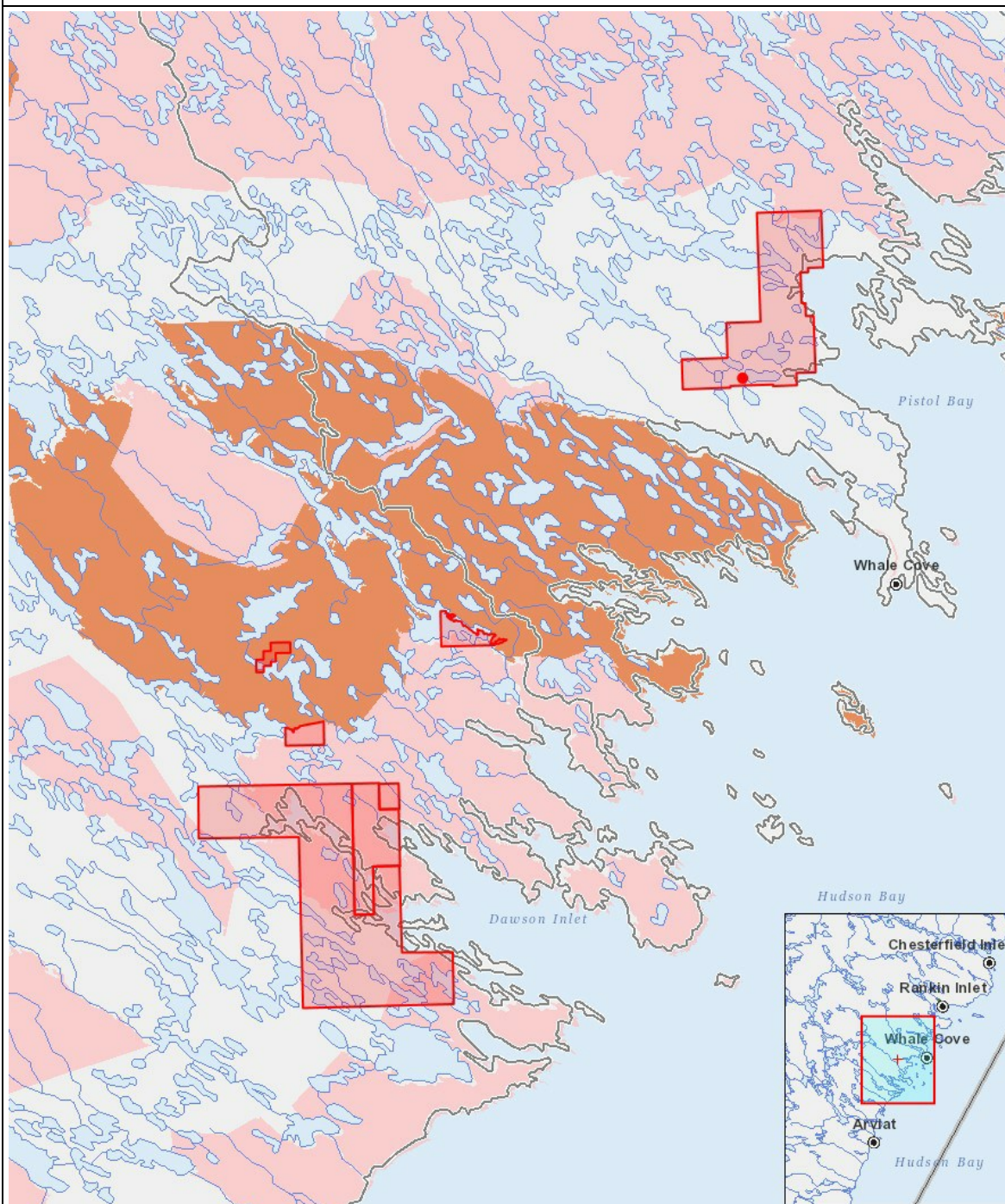
Impacts

Ilitariyauniq Avatiliriniqmut Ayurhautingit

	PHYSICAL																								
	Designated environmental areas																								
	Ground stability																								
	Permafrost																								
	Hydrology / Limnology																								
	Water quality																								
	Climate conditions																								
	Eskers and other unique or fragile landscapes																								
	Surface and bedrock geology																								
	Sediment and soil quality																								
	Tidal processes and bathymetry																								
	Air quality																								
	Noise levels																								
	BIOLOGICAL																								
	Vegetation																								
	Wildlife, including habitat and migration patterns																								
	Birds, including habitat and migration patterns																								
	Aquatic species, incl. habitat and migration/spawning																								
	Wildlife protected areas																								
	SOCIO-ECONOMIC																								
	Archaeological and cultural historic sites																								
	Employment																								
	Community wellness																								
	Community infrastructure																								
	Human health																								
Havakvinga																									
-		-	-	-	-	-	-	-	-	-	-	-	-		-	-	-	-	-		-	-	-	-	-
Aulapkaininnga																									
Mineral Exploration		-	-	-	-	-	-	-	-	-	-	N		-	-	-	-	-	-		P	-	-	-	-
Piiqtauniq																									
-		-	-	-	-	-	-	-	-	-	-	-		-	-	-	-	-	-		-	-	-	-	-

(P = Nakuuyuq, N = Nakuungittut unalu mikhilimaittuq, M = Nakuungittut unalu mikhittaaqtuq, U = Naluyauyuq)

Havaariyauyukhamut Nayugaa



List of Project Geometries

1	polygon	Mineral properties, already screened
2	polygon	Huckleberry-0001, already screened
3	polygon	Snow expansion
4	point	Camp proposed, already screened