



NIRB Uuktuutinga Ihivriughikhamut #125461 Blue Star Gold Corp.

Uuktuutinga Qanurittuq: New

Havaap Qanurittunia: Mineral Exploration

Uuktuutinga Ublua: 4/8/2019 1:54:59 PM

Period of operation: from 0001-01-01 to 0001-01-01

Piumayaat Angirutinga: from 0001-01-01 to 0001-01-01

Havauhikhaq Ikayuqtinga: Peter Kuhn
Blue Star Gold Corp.
1125-595 Howe St.
Vancouver BC V6C 2T5
Canada
Hivayautit Nampanga:: 778-379-1433, Kayumiktukkut Nampanga::

Tukihiannaqtunik havaariyaayumayumik uqauhiuyun

Qablunaatitut: Please see attached. The purpose of the Hood River Gold Project (the Project) is to conduct exploration-related activities to assess previously identified gold targets, to conduct prospecting to locate new gold targets and to explore these targets. Exploration activities may include airborne surveys, drilling, sampling, mapping and prospecting. Environmental and heritage resources baseline studies may be undertaken to inform future project planning and mitigate potential program impacts. Works will be based either regionally, or out of a camp to be established on the property, or out of a camp established on nearby properties, should permitting and availability exist (the Program). Current and past authorizations exist for exploration related activities on the property, including mapping, sampling, geophysics, drilling, prospecting, operating a camp, conducting archaeology and environmental baseline studies. These authorizations are: •NIRB screening 07EN067, 14EN033; •NWB water licence 2BE-HRP1419; •KIA Land use licences KTL307C014 and KTL314C010 (expired); •NTI Mineral Exploration Agreement HOODRIVER-001. The purpose of this application is to: •Renew the existing water licence 2BE-HRP1419; •Amend the existing water licence to allow for establishment of a temporary camp and the related domestic water use and waste deposit; •Renew the expired land use licence to allow for exploration, temporary camp establishment and future potential environmental and heritage resources baseline studies. The study area indicated on the maps provided is the Hood River watershed boundary. Should the Applicant commence baseline studies, it is reasonable to expect that they may include sampling upstream and downstream of the exploration area. The Exploration area is currently delineated according to the existing Agreement with NTI, and occurs in an area immediately adjacent to the Ulu property. While the exploration area boundaries may change in the future based on prospecting results, exploration is expected to occur in the general vicinity of the existing Hood River and Ulu parcels. Related, a temporary camp is proposed, for a suitable location within the current Hood River parcel. Based on exploration results, it is possible that the camp may be relocated over the life of the program, to an area proximal to drilling.

Uiviititut: n/a

[illegible]

Inuinnaqtun: Hivuraqhiit-mi Kuulmik UyaraktaqvikPijugauyuqPijutauyuq Hivuraqhiit-miKuulmik Uyaraktaqvik (Havaaq) qiniqhiayaagani kuulmik ilituqhaqlugulu hanianiituut nunat. Una havaaq havaariyauhimayuq uvani nunami ukiuni atuqhimayuni: NIRB-kut hivuani ihivriuqhihimaliqtut havaariyaayunik KIA-kulu NWB-kulu tunihihimaliqtut laisiuyunik.Timiuyuq upalugaiyaqtuq havaariyaagani havaaq, Blue Star Gold Corp.-guyuq, immaqmik aturiamikni laisiqualiqtut (2BE-HRP1419), kihiani havakpalaaqhimagitut nunagiyauyumi malruukni ukiukni. Immaqmik aturiagani laisiuyuq nutaaguqtiriaqaqtuq ilaginiklu aalaguqtiqniginik piqariagani nutaamik igluuqpaqaqvikhamik; igluuqpaqaruiqtuq nunami taja nutaamik hanayariaqaqtut. Ilaganilu, nutaq nunamik aturiagani laisiuyuq KIA-kunit ihariagiyauyuq tamaita hulijutikhat havaariyaayaagani Inuit Nanminik Nunagiyani.Blue Star-kut qaganuaq aalaguqhimayaat atiqtik: timiuyuq hivuani qauyimayauyuugaluaq WPC Resources-kunik Timiuyumik.Nutaq atia, Blue Star Gold Corp.-kunik pihimayuq uvluriamit Nunavumi takuyaani, timiuyuvlu ihumagiyainik havaariyamiknik Nunavumi. Blue Star-kut nanminiaqtulu timiuyumik taiyaayumik Inukshuk Exploration Timiuyumik, havakhimayumik nunami ukiuni atuqhimayuni.InigiyauyuqHavaaq 210-kilaamitamik ugahikniqaqtuq hivuraata kivaliqhiani Kugluktup, hanianiituq Ulu-mi nunagiyauyuup, hanianilu havakviuyuk Hivuraqhiit-mi Frayed Knots-milu Kuukami. Tamaat havaaq iniaqtuq Inuit Nanmini Nunagiyaini. Qanuriniga PivikhaqaqnigaluQiniqhiayaagani kuulmik ilituqhaqlugilu hanianiitut nunat, ukua atulaaqtut havaariyauniganik havaaq: •Hanalutik atulaklugulu tupiqpaqaqvikhaq upingaami, auyami, ukiakhamilu; •Qiniqhialutik ikuutaqlutiklu nanihiyaagani amigaitqiyani kuulmik; •Atuqlutik tikmianik havakvikmugaayaami, hanikaapkailu, sikiitulu haguyaami igluqpaqaqvikmi; •Tuutquqhilitik uqhuqyuanik igluqpaqaqvikmi hanianilu ikuutat; •Tikmiakuuqtilugit inuit ihuaqutikhalu qanilruumit nunagiyaayunit igluuqpaqaqvikmut, mitpaklutik atuqtumi milvikmi haniani Ulu-p; •Atuqlutik hiniktaqviknik manikhaqhiurutiniklu haniani nunagiyaayuni aulaliraagamik igluuqpaqaqvikmut; •Atuqlutik nunami manikhaqhiurutaayut inuulu havagiami havaami; •Iltuqhaqlugit igilraaqnitat, nuna, immaq, hilauyuq, umayulu talvani nunauyui.Taimaiginaqnigani atulihaaqnigani ubluut qiniqhianikut havaami, nahuriyauyuq Havaaq aulaqtiriagani mikiyuuluni agiklivalialunilu nanihiguupta kuulmik. 2019-mi, upalugaiyaqtugut hanayaaptikni mikiyumik igluuqpaqaqvikhamik auyaq, qanitanilu 30 inuit igluuqpaqaqvikmi ikutariagani maluuknik atuqlutik atautikut hanikaaptakmiklu, nalvaaqhiuqlutiklu uyaraktaqvikhanik. Havatiaruupta, amigaitqiyaniq inuqalaaqtuq ikuutaqtuniklu agitqiyamiklu igluuqpaqaqvikmik hivunikhami, havalaqtugulu

ukiumi. Ahiagurutikhat Blue Star-kut qiniqhimayut atuqtakhanik havaariyaagani taja upalugaiqtayut. Igluuppaqagitkaluaqluni Kugluktumi ilaaqtugut Iqaluktuutiamiluniit. Talvaniiniaraluaqtiluta ilaani, talvaniitaami unutuaraagat amihunik aulaarutaulaaqtuq talvuga havakvikmilu ublutuaraagat. Igluuppaqaqtuugaluaq Ulu-mi, kihiani, atulimagineptigu taja inugiakniaqmat inuknik kiklimaktiriyunik Ulu-mi. Blue Star-kut qanuriliugilutik pilaaqtut nunagiyauyumi, kihiani, ukpiruhuktugut kuulqaqniganik nunami qinirumayavulu. Havaqatigiyumayavulu inuit maniqami nunagiyauyunilu, pipkailuta havaakhanik, ayuiqhajutikhanik, atuqtakhaniklu. Ilauyut Upigiaqnigit Ublumimut, Blue Star-kut uqaqhimaliqtut ukunuga: Kugluktumi, Qigaup Umikmaktuuvlu Angunahuaqtiit Naniriaqtutulu Timiuyut; inuit nunaqaqtut Kugluqtumi, Iqaluktuutiamilu, NTI-kut, KIA-kut, NPC-kut, NIRB-kut, NWB-kut, GN-kut, CIARNAC-kut, CanNor-kut, aalalu inuit havaktut Qitiqmiuni, nunagiyauyumilu nanminik manikhaqhiurutiaqtut. Inuit katimayaagani upingaami upalugaiqtut. Avatauyumik Aktuqnigit Hunaliqaa hulijut maniqamik ihiruqhilaqtuq ihuilijutauluniluniit. Una atugitaagani, Blue Star-kut upalugaiyaqtut havagiami hivuani, havaqatigilugit inuit qauyimayut nunamik, havakpaktumiklu ihuaqtumik ukua havaavut maniraqlu aaniqviugitaagani halumayaaganilu havaktiluta, nakhariaganilu tamaita piqutivut ihuaqutilu iniruufta havaaptiknik.

Personnel

Personnel on site: 60

Days on site: 750

Total Person days: 45000

Operations Phase: from 2019-06-25 to 2019-07-04

Operations Phase: from 2019-06-25 to 2024-06-24

Post-Closure Phase: from to

Hulilukaarutit

Inigiya	Hulilukaarut Qanurittuq	Nunangga Qanurittaakhaanik	Initurlinga qanuritpa	Initurlinga utuqqarnitat unaluuniit Ingilraaqnitat Uyarannguqtut akhuurninnga	Qanitqiyauyuq qanitqiamut nunallaat kitulluuniit ahiruqtaliyainnit nuna
Approximate exploration area. Exploration activities, including a temporary camp (location to be confirmed), will occur in this area. The boundaries of this area may change in the future, based on prospecting results. Any changes will remain within the Study Area.	Drilling	Inuit Owned Sub-Surface Lands	Exploration has occurred in the vicinity in the past.	N/A	Kugluktuk is approximately 200 km northwest.
Study Area, Hood River Watershed. Environmental baseline studies may occur throughout the watershed.	Airstrip use or construction	Inuit Owned Surface Lands	There is an existing airstrip south of the Ulu property, which the Project may make use of. Alternately, an adjacent lake may be used for landing resupply aircraft on floats. No new airstrip construction is planned.	None.	Kugluktuk is approximately 200 km northwest.
Study Area, Hood River Watershed. Environmental baseline studies may occur throughout the watershed.	Baseline data	Crown	Studies have occurred throughout the watershed in the past, in support of other exploration projects.	Unknown. Studies may be undertaken.	Kugluktuk is approximately 200 km northwest.
Study Area, Hood River Watershed. Environmental baseline studies may occur throughout the watershed.	Baseline data	Inuit Owned Surface Lands	Studies have occurred throughout the watershed in the past, in support of other exploration	Unknown. Studies may be undertaken.	Kugluktuk is approximately 200 km northwest.

			projects.		
Approximate exploration area. Exploration activities, including a temporary camp (location to be confirmed), will occur in this area. The boundaries of this area may change in the future, based on prospecting results. Any changes will remain within the Study Area.	Camp	Inuit Owned Surface Lands	Exploration camps have been established in the vicinity in the past. There is currently a camp on the adjacent Ulu property. However, this camp is currently unavailable for use.	Unknown. Studies will be undertaken.	Kugluktuk is approximately 200 km northwest.
Approximate exploration area. Exploration activities, including a temporary camp (location to be confirmed), will occur in this area. The boundaries of this area may change in the future, based on prospecting results. Any changes will remain within the Study Area.	Drilling	Inuit Owned Surface Lands	Exploration has occurred in the vicinity in the past.	Unknown. Studies may be undertaken.	Kugluktuk is approximately 200 km northwest.
Approximate exploration area. Exploration activities, including a temporary camp (location to be confirmed), will occur in this area. The boundaries of this area may change in the future, based on prospecting results. Any changes will remain within the Study Area.	Fuel and chemical storage	Inuit Owned Surface Lands	Fuel caches have been established in the vicinity in the past, to support exploration and camp operation.	Unknown. Studies will be undertaken.	Kugluktuk is approximately 200 km northwest.
Study Area, Hood River Watershed. Environmental baseline studies	Mineral Exploration	Crown	Exploration has occurred in the vicinity in the past.	Unknown. Studies may be undertaken.	Kugluktuk is approximately 200 km northwest.

may occur throughout the watershed.					
Study Area, Hood River Watershed. Environmental baseline studies may occur throughout the watershed.	Mineral Exploration	Inuit Owned Surface Lands	Exploration has occurred in the vicinity in the past.	Unknown. Studies may be undertaken.	Kugluktuk is approximately 200 km northwest.
Approximate exploration area. Exploration activities, including a temporary camp (location to be confirmed), will occur in this area. The boundaries of this area may change in the future, based on prospecting results. Any changes will remain within the Study Area.	Waste disposal	Inuit Owned Surface Lands	Waste disposal from camp activities (grey water) and drilling (cuttings) have occurred in the vicinity in the past.	Unknown. Studies may be undertaken.	Kugluktuk is approximately 200 km northwest.

Nunaliin Ilauyun, Aviktuqhimayuniitunullu Ikayuuhiarunguyun

Nunauyuq	Atia	Timiuyuq	Upluani Uqaqatigiyaungmata
Kugluktuk	Geoff Clark	KIA-Lands	2019-01-08
Kugluktuk	Geoff Clark	KIA-Lands	2019-01-24
Kugluktuk	Geoff Clark	KIA_Lands	2018-10-26
Kugluktuk	Geoff Clark	KIA-Lands	2018-11-05
Kugluktuk	Geoff Clark, Tannis Bolt	KIA-Lands	2019-03-19
Kugluktuk	Geoff Clark	KIA-Lands	2019-04-02
Ikaluktuttiak	Stanley Anablak, Paul Emingak, Fred Pedersen, Michelle Gillis, John Roesch, Geoff Clark	KIA	2019-03-02
Kugluktuk	Amanda Dumond	Kugluktuk Angoniatit Association	2019-01-10
Kugluktuk	Amanda Dumond	Kugluktuk Angoniatit Association	2019-01-23
Kugluktuk	Amanda Dumond	Kugluktuk Angoniatit Association	2019-03-20
Ikaluktuttiak	Sam Angohiatok	Burnside & Omingmaktok Hunters' & Trappers' Organizations	2019-02-04
Ikaluktuttiak	Sam Angohiatok	Burnside & Omingmaktok Hunters' & Trappers' Organizations	2019-02-11

Ikaluktuttiak	Sam Angohiatok	Burnside & Omingmaktok Hunters' & Trappers' Organizations	2019-03-21
Kugluktuk	Matt Stadnyk	Hamlet of Kugluktuk	2019-01-24
Kugluktuk	Don Leblanc	Hamlet of Kugluktuk	2019-03-19
Kugluktuk	Public	Public meeting, morning	2019-03-20
Kugluktuk	Public	Public meeting-evening	2019-03-20
Kugluktuk	Baba Pedersen	CIRNAC	2019-01-25
Kugluktuk	Lisa-Marie LeClerc, Kevin Methuen	GN-DOE	2019-01-24
Kugluktuk	Lisa-Marie LeClerc, Kevin Methuen	GN-DOE	2019-03-13
Iqaluit	Erika Zell, Paul Budkewich, David Kunuk	GN-Minerals, DOE	2019-01-30
Iqaluit	Erika Zell, Paul Bedkewich, Natalie O'Grady	GN-DOE, Minerals	2019-04-05
Iqaluit	Tineka Simmons, Adrian Paradis	CanNor	2019-01-15
Iqaluit	Tineka Simmons, Adrian Paradis	CanNor	2019-01-31
Iqaluit	Tineka Simmons, Adrian Paradis	CanNor	2019-03-04
Iqaluit	Godwin Okonkwo, Felexce Ngwa	CIRNAC-Waters, EA	2019-02-19
Iqaluit	Godwin Okonkwo, Felexce Ngwa	CIRNAC-Waters, EA	2019-04-04
Ikaluktuttiak	Public	Public Meeting	2019-03-21
Iqaluit	Public	Public Meeting	2019-03-22
Ikaluktuttiak	Ryan Barry, Teresa Meadows	NIRB	2019-01-30
Ikaluktuttiak	Natasha Lear, Jaida Ohokannoak	NIRB	2019-03-22
Ikaluktuttiak	Tara Arko	NIRB	2019-02-12
Urhuqtuuq	Dave Baines, Derek Donald, Teresa Meadows	NWB	2019-01-29
Urhuqtuuq	Karen Kharatyan, Assol Kubeisinova, Derek Donald, Teresa Meadows	NWB	2019-04-04
Ikaluktuttiak	Jonathon Savoy	NPC	2019-02-12
Ikaluktuttiak	Carson Gillis, Jorgan Aitoak	NTI-Lands	2019-01-30
Ikaluktuttiak	Carson Gillis	NTI_Lands	2018-10-01
Iqaluit	Matt Senkow, Karen Dunphy	CIRNAC	2018-10-01
Kugluktuk	Baba Pedersen	CIRNAC	2018-10-09
Iqaluit	Justin Hack	CIRNAC	2018-10-10
Iqaluit	Jeremy Fraser	CIRNAC	2018-01-16
Ikaluktuttiak	Carson Gillis	NTI-Lands	2018-10-22
Ikaluktuttiak	Carson Gillis, Jorgan Aitoak	NTI_Lands	2019-11-19

Angiuttauvaktunik

Naunaiqlugu nunanga talvani havauhikhaq ittuq:

Kitikmeot

Angiuttauvaktunik

Munariniqmut Ayuittiaqtuq	Angirutinga Qanurittuq	Tadja Qanurittaakhaanik	Ublua Tuniyauyuq/Uuktuqtuq	Umikvikhaa Ublua
Nunavut Imaligiyyit Katimayit	2BE- HRP1419Application for renewal and amendment will be submitted to the NWB shortly.	Active	2014-11-03	2019-11-02
Kitikmeot Inuit Katimayiingit	Application for a Land Use Licence II will be submitted to the KIA shortly.	Not Yet Applied		
Nunavut Kavamanga, Nunavunmi Ihivriunniqmut Timiqutigiyanga	An application for a scientific research licence will be applied for in subsequent years to support baseline environmental data collection	Not Yet Applied		
Government of Nunavut, Department of Culture, Language, Elders, and Youth	An application for a Class I Archaeology and Palaeontology Research Permit has been submitted	Applied, Decision Pending		
Iqalukhiurniqmut Tariuqmilu Kaanata	An application for a fish collection permit may be submitted in subsequent years to support baseline data collection	Not Yet Applied		

Project transportation types

Transportation Type	Qanuq Atuqtauniarmangaa	Length of Use
Air	The site is accessible by air only. Crews may access site by fixed or rotary wing, and use regional or local airstrips, such as the existing airstrip at Ulu, or a lake adjacent to the camp.	

Project accomodation types

Temporary Camp

Nunauyuq

Ihuaqutivaluin Atuqtauyukhan

Hanalrutit atuqtaunahuat (ukuallu ikuutat, pampiutainnik, tingmitinik, akhaluutinik, hunaluuniit)

Hanalrutit Qanurittuq	Qaffiuyut	Aktikkulaanga – Qanurittullu	Qanuq Atuqtauniarmangaa
Drills	tbd	tbd	Exploration drilling
Helicopters	tbd	tbd	Access, drill support
Fixed wing aircraft	tbd	tbd	Access, camp and drill support
Generators	tbd	tbd	Power for camp and drills
Water Pump	tbd	tbd	Pump water for domestic and industrial use
Snowmobiles	tbd	tbd	Access
Snow cat	tbd	tbd	Camp and drill support
Watercraft	tbd	tbd	Access
Compressors	tbd	tbd	Camp and drill support
ATV	tbd	tbd	Access
Skidsteer	tbd	tbd	Camp support
Incinerator	tbd	tbd	Waste management

Qanurittuq Urhuqyuaq unalu Qayangnaqtut Hunavaluit Aturninnga

Qanurittuq urhuqyuaq hunavaluit aturninnga:	Urhuqyuaq Qanurittuq	Qaffiuyut qattaryut	Qattaryuk Aktikkulaanga	Atauttimut Qaffiuyut	Ilanga	Qanuq Atuqtauniarmangaa
Aviation fuel	fuel	150	220	33000	Liters	Aircraft fuel
Diesel	fuel	220	220	48400	Liters	Camp and equipment fuel
Gasoline	fuel	15	220	3300	Liters	Equipment fuel
Propane	fuel	20	100	2000	Lbs	Camp fuel
Lubricants, greases	hazardous	36	5	180	Gallons	Equipment and drill maintenance
Drilling additives	hazardous	36	5	180	Gallons	Drill support
Salt	hazardous	500	50	25000	Lbs	Drilling additives
Acetylene	hazardous	2	100	200	Lbs	Welding for equipment repair
Oxygen	hazardous	3	100	300	Lbs	First aid, welding for equipment repair

Imaqmik Aturninnga

Ubluq qanuraaaluk (m3)	Aturumayain imavaluin utiqittagaani qanuq	Atulirumayain imavaluin utiqittagani humi
150	Pump with screened intake	Lakes adjacent to camp and drill targets

Iqqakuq

Ikkakunik Munakgiyauyunik

Havauhikhaq Hulilukaarut	Qanurittuq Iqqakut	Ihumagiyauyuq Qanuraaluktut Atuqtait	Qanuq Iqqakuurniarmangaa	Halummaqtirarnirutikhan piyutin
Camp	Ikulalaaqtun iqqakuuvaluin	Various	Incinerate or open burn clean materials.	-
Drilling	Ikulalaaqtun iqqakuuvaluin	Various	Incinerate or open burn clean materials.	-
Camp	Qirnarivyaktuq imaq	30 m3/day	Discharge to a sump	Grease trap
Camp	Qayangnaqtut	Various	Backhaul to certified waste receiver	-
Fuel and chemical storage	Qayangnaqtut	Various	Water that has accumulated in secondary containment will be discharged to tundra following treatment if needed.	Activated carbon filter and/or oil/water separator
Drilling	Qayangnaqtut	Various	Backhaul to certified waste receiver	-
Camp	Ikulalimanngittun iqqakuuvaluin	Various	Wastes are segregated and backhauled for reuse, recycling or disposal at an approved facility	-
Camp	Anaagun (inuin anaaguin)	30 m3/day	Incinerate or backhaul	-

Avatiliriniqmut Ayurhautingit:

See attached.

Additional Information

SECTION A1: Project Info

SECTION A2: Allweather Road

SECTION A3: Winter Road

SECTION B1: Project Info

Gold exploration

SECTION B2: Exploration Activity

•Constructing and operating a seasonal temporary camp able to support up to 60 people; •Staking and prospecting;•Drilling both on land and on ice using diamond and/or rotary air-blast/reverse circulation drilling;•Mobilization, drill support and access via helicopter and fixed wing aircraft;•Diesel and jet fuel to be cached at several locations proximal to drill targets and at the camp, and propane to be cached at the camp site;•Staging to occur via the local existing Ulu airstrip, a regionally accessible airstrip and/or sea lift;•Local overland winter access for camp and drill support;•Temporary use of regionally available accommodations and support services;•Archaeological overview and site assessments, where required;•Baseline environmental studies.

SECTION B3: Geosciences

Geophysical and other airborne surveys may be undertaken in the future if needed.

SECTION B4: Drilling

Drill hole locations and depths are to be determined based on ongoing analysis of historic exploration activities, and results of new exploration activities. It is expected that drilling will be limited to the area in the vicinity of the Ulu claim and the existing Hood River claim. Based on future prospecting results, claim boundaries may change in the future, however, it is reasonable to expect that drilling will occur in an area contiguous with that already delineated. Drill additives will be used where required, to the minimum extent possible. Additives vary depending on the nature of the ground encountered. Salt may be used, along with other non-toxic materials. Cuttings will be dewatered to the greatest extent possible and deposited in an adjacent upland sump. Drill water will be recirculated and reused to the greatest extent possible. Excess drill water will be deposited in an adjacent upland sump. Drill equipment will be mobilized by helicopter. Drill holes will be abandoned by cutting the drill stems off at ground level and backfilling any areas of subsidence around drill stems in such a manner as to prevent water accumulation.

SECTION B5: Stripping

n/a

SECTION B6: Underground Activity

n/a

SECTION B7: Waste Rock

n/a

SECTION B8: Stockpiles

n/a

SECTION B9: Mine Development

SECTION B10: Geology

SECTION B11: Mine

SECTION B12: Mill

SECTION C1: Pits

SECTION D1: Facility

SECTION D2: Facility Construction

SECTION D3: Facility Operation

SECTION D4: Vessel Use

SECTION E1: Offshore Survey

SECTION E2: Nearshore Survey

SECTION E3: Vessel Use

SECTION F1: Site Cleanup

SECTION G1: Well Authorization

SECTION G2: Onland Exploration

SECTION G3: Offshore Exploration

SECTION G4: Rig

SECTION H1: Vessel Use

SECTION H2: Disposal At Sea

SECTION I1: Municipal Development

Qanurittuq Ittunik Avatinga: Avatingalluanga

The Project is located within the Southern Arctic Ecozone and the Takijuk Lake Upland Ecoregion. Much of this region is composed of unvegetated rock outcrops, in the Hood River watershed. Cryosols are the dominant soils in the lowlands and permafrost is deep and continuous. None of the following protected sites were found within the Project area or immediately adjacent:•Important Bird Areas (IBA) (IBA Canada 2019);•Key Habitat Sites for migratory birds (Latour et al. 2008);•Wetlands of International Importance (RAMSAR) (The Ramsar Sites 2019);•Migratory Bird or Wildlife Sanctuaries (Government of Canada 2019); or•Heritage Rivers (Canadian Heritage Rivers System 2019).

Qanurittuq Ittunik Avatinga: Inuuhimayunut Avatinga

The Project is located within the Southern Arctic Ecozone and the Takijuk Lake Upland Ecoregion. Vegetative cover is characterized by shrub tundra, consisting of dwarf birch, willow, northern Labrador tea, avens species and blueberry species. Characteristic wildlife includes caribou, muskoxen, grizzly bear, wolverine, Arctic hare, Arctic fox, red fox and wolf. Small mammals (e.g., Arctic ground squirrel, voles, and lemmings) are distributed throughout the region and provide an important food source for predators. Many species of migratory birds are present in the area during the summer season, including waterfowl, raptors, songbirds, and shorebirds, while some bird species are present year round (e.g., ptarmigan, gyrfalcon, and common raven). According to the Species at Risk Public Registry, the following species at risk could be found within the Project area:•Barren-ground caribou;•Grizzly bear;•Wolverine;•Peregrine Falcon;•Short-eared Owl; and•Red-necked Phalarope.

Qanurittuq Ittunik Avatinga: Inungit-maniliurutingit Avatinga

The Project is located approximately 210 km southeast of Kugluktuk in the Kitikmeot Region of Nunavut on Inuit-owned land and is immediately adjacent to the Ulu property. Past archaeology studies indicated 1 site within the vicinity of the project; additional studies are proposed for the upcoming season. Engagements with 3 different HTOs indicate that land and resources use in the area, other than exploration, is limited.

Miscellaneous Project Information

Refer to attached files.

Naunaiyainiq ukuninnga Ayurhautingit unalu Piumayaat Ikikliyuumiutinahuarutit

Refer to attached Impact Assessment.

Tamatkiumayunik Ihuikgutivaktunik

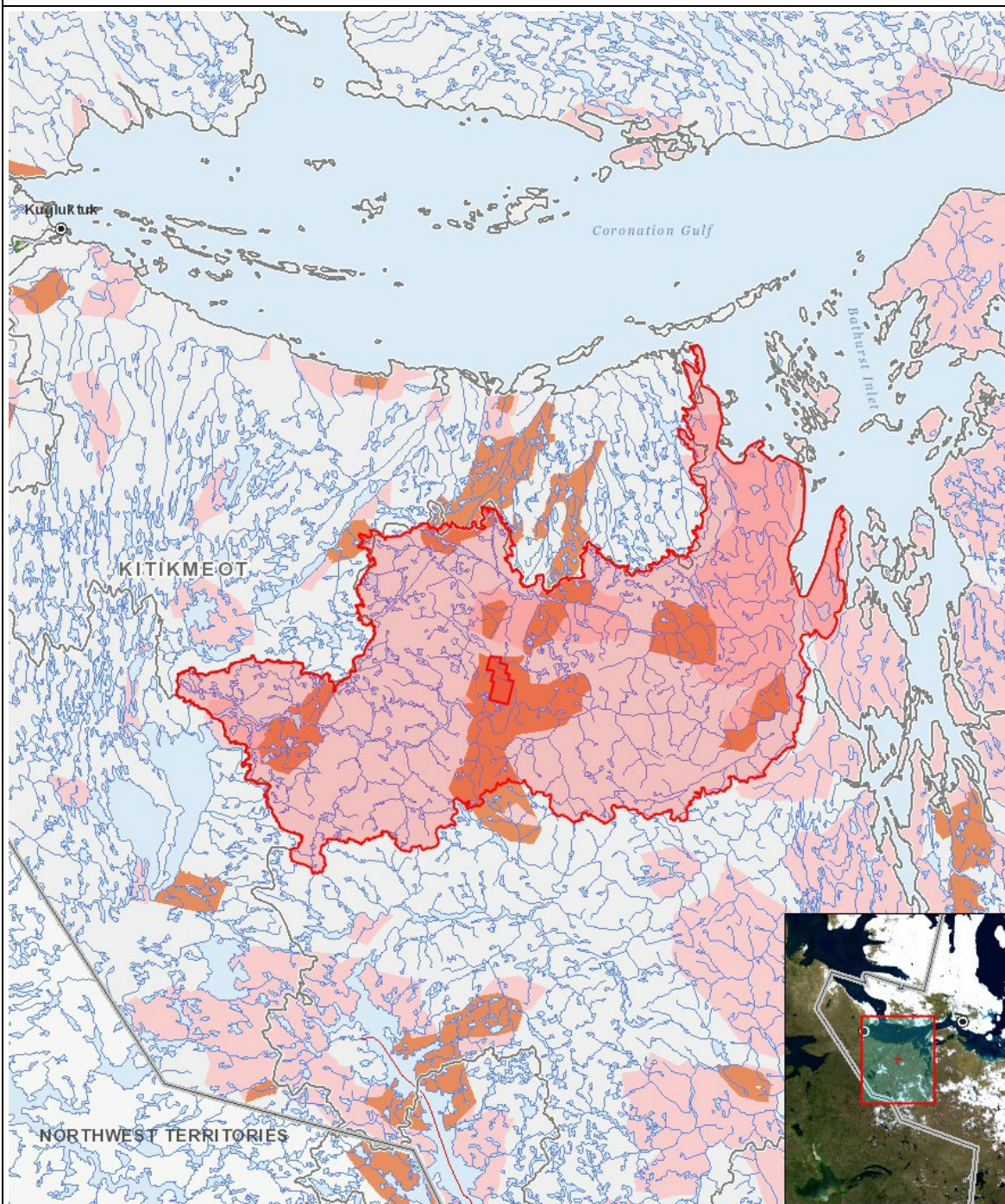
None.

Impacts

Ilitariyauniq Avatiliriniqmut Ayurhautingit

		C																		
		C																		
		C																		
		C																		
		C																		
		C																		
		C																		
		C																		
		C																		
		C																		
		C																		
		C																		
		C																		
		C																		
		C																		
		C																		
		C																		
		C																		
		C																		
		C																		
		C																		
		C																		
		C																		
		C																		
		C																		
		C																		
		C																		
		C																		
		C																		
		C																		
		C																		
		C																		
		C																		
		C																		
		C																		
		C																		
		C																		
		C																		
		C																		
		C																		
		C																		
		C																		
		C																		
		C																		
		C																		
		C																		
		C																		
		C																		
		C																		
		C																		
		C																		
		C																		
		C																		
		C																		
		C																		
		C																		
		C																		
		C																		
		C																		
		C																		
		C																		
		C																		
		C																		
		C																		
		C																		
		C																		
		C																		
		C																		
		C																		
		C																		
		C																		
		C																		
		C																		
		C																		
		C																		
		C																		
		C																		
		C																		
		C																		
		C																		
		C																		
		C																		
		C																		
		C																		
		C																		
		C																		
		C																		
		C																		
		C																		
		C																		
		C																		
		C																		
		C																		
		C																		
		C																		
		C																		
		C																		
		C																		
		C																		
		C																		
		C																		
		C																		
		C																		
		C																		
		C																		
		C																		
		C																		
		C																		
		C																		
		C																		
		C																		
		C																		
		C																		
		C																		
		C																		
		C																		
		C																		
		C																		
		C																		
		C																		
		C																		
		C																		
		C																		
		C																		
		C																		
		C																		
		C																		
		C																		
		C																		
		C																		
		C																		
		C																		
		C																		
		C																		
		C																		
		C																		
		C																		
		C																		
		C																		
		C																		
		C																		
		C																		
		C																		
		C																		
		C																		
		C																		
		C																		
		C																		
		C																		
		C																		
		C																		
		C																		
		C																		
		C																		
		C																		
		C																		
		C																		
		C																		
		C																		
		C																		
		C																		
		C																		
		C																		
		C																		
		C																		
		C																		
		C																		
		C																		
		C																		
		C																		
		C																		
		C																		
		C																		
		C																		
		C																		
		C																		
		C																		
		C																		
		C																		
		C																		
		C																		
		C																		
		C																		
		C																		
		C																		
		C																		
		C																		
		C																		
		C																		
		C																		
		C																		
		C																		
		C																		
		C																		
		C																		
		C																		
		C																		
		C																		
		C																		
		C																		
		C																		
		C																		
		C																		
		C																		
		C																		
		C																		
		C																		
		C																		
		C																		
		C																		
		C																		
		C																		
		C																		
		C																		
		C																		
		C																		
		C																		
		C																		
		C																		
		C																		
		C																		
		C																		
		C																		
		C																		
		C																		
		C																		
		C																		
		C																		
		C																		
		C																		
		C																		
		C																		
		C																		
		C																		
		C																		
		C																		
		C																		
		C																		
		C																		
		C																		
		C																		
		C																		
		C																		
		C																		
		C																		

(P = Nakuuyuq, N = Nakuungittut unalu mikhilimaittuq, M = Nakuungittut unalu mikhittaaqtuq, U = Naluyauyuq)



List of Project Geometries

- | | |
|---|--|
| 1 | <p>polygon</p> <p>Approximate exploration area. Exploration activities, including a temporary camp (location to be confirmed), will occur in this area. The boundaries of this area may change in the future, based on prospecting results. Any changes will remain within the Study Area.</p> |
| 2 | <p>polygon</p> <p>Study Area, Hood River Watershed. Environmental baseline studies may occur throughout the watershed.</p> |